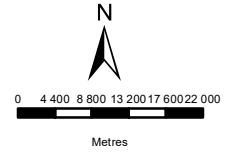


**BRANDVALLEY
POWERLINE
LOCALITY**

- Legend**
- Proposed Powerline
 - - Eskom Powerlines



DISCLAIMER

The information on this figure was derived from various digital databases available to WSP Environmental (Pty) Ltd. All information is provided "as is" and it must be acknowledged that data, information, and maps are dynamic and in a constant state of maintenance, correction and update. WSP Environmental (Pty) Ltd cannot accept any responsibility for errors, omissions, or positional accuracy where it has not been directly responsible for the production of the data referenced. There are no warranties, expressed or implied, as to the use of this information, including the warranty of merchantability or fitness for a particular purpose. Notification of any errors will be appreciated.



WSP ENVIRONMENTAL (PTY) LTD
 WSP HOUSE, 1 ON LANGFORD, LANGFORD ROAD, WESTVILLE 3632
 P O BOX 1442, WESTVILLE 3630, RSA
 Tel +27 (0)31 240 8860, Fax +27 (0)31 240 8861, wspe@wspgroup.co.za

DATA SOURCE:
 Service Layer Credits: Sources: Esri, HERE, Garmin, USGS, Intermap, INCREMENT P, NRCan, Esri Japan, METI, Esri China (Hong Kong), Esri Korea, Esri (Thailand), NGCC, (c)

COORDINATE SYSTEM: WGS LO21

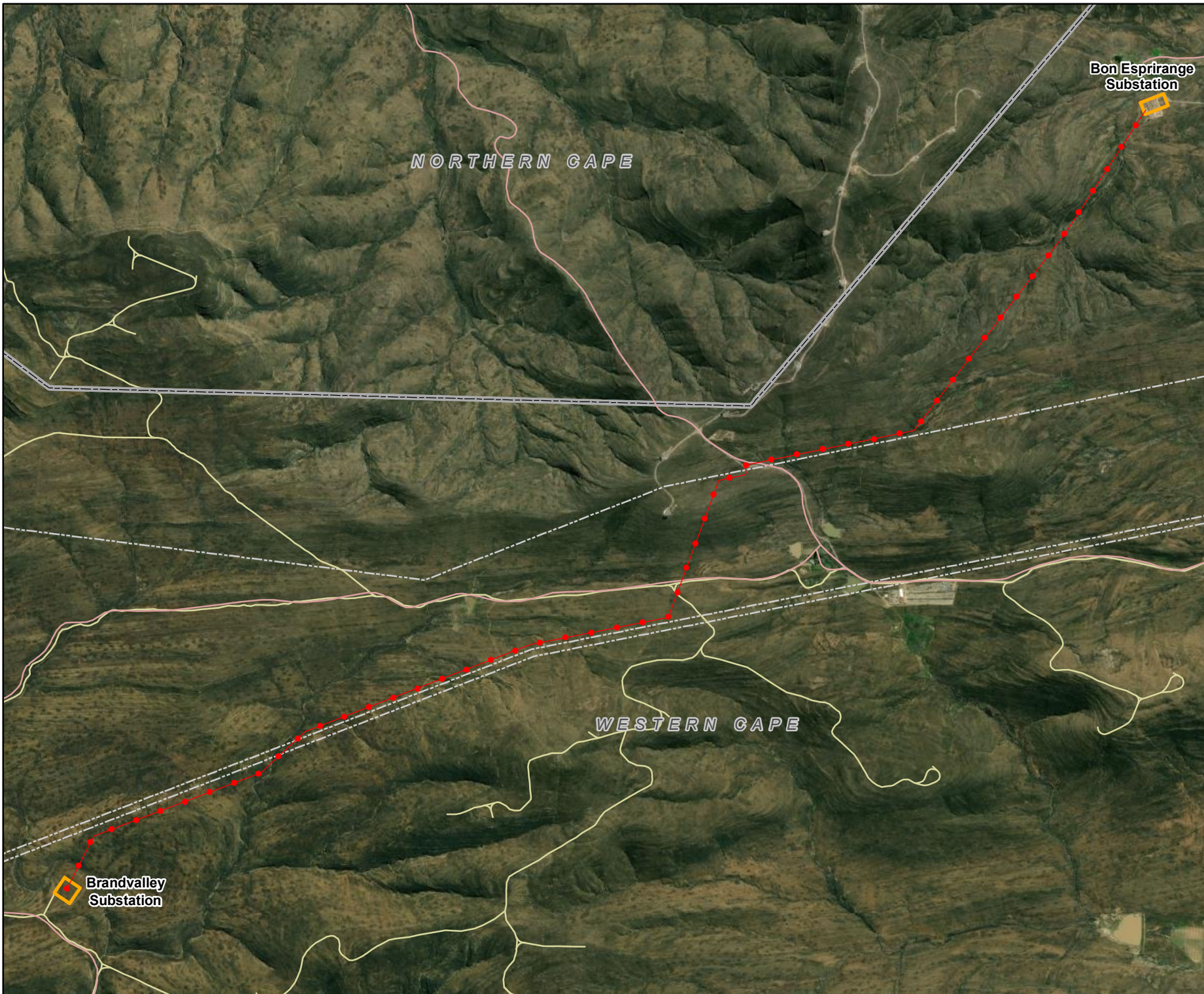
PROJECT TITLE:
 EURONOTUS CLUSTER

SCALE: 1:900 000 **DRAWN BY:** TS

DATE: 2021/10/20 **REVIEWED BY:** AS

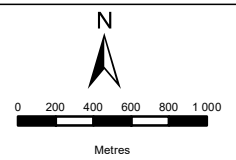
FIGURE NO: **PROJECT NO:** 41103473 **REV:**

© COPYRIGHT RESERVED
 The content of this document is privileged and confidential and may not be disclosed or reproduced without the express authorisation of the author, being "WSP Environmental (Pty) Ltd"



**BRANDVALLEY
PROPOSED
LAYOUT**

- Legend**
- Brandvalley Authorised Powerline
 - Substations
 - Proposed Access Roads
 - Eskom Powerlines
 - Access road
 - Provincial Boundary



DISCLAIMER

The information on this figure was derived from various digital databases available to WSP Environmental (Pty) Ltd. All information is provided "as is" and it must be acknowledged that data, information, and maps are dynamic and in a constant state of maintenance, correction and update. WSP Environmental (Pty) Ltd cannot accept any responsibility for errors, omissions, or positional accuracy where it has not been directly responsible for the production of the data referenced. There are no warranties, expressed or implied, as to the use of this information, including the warranty of merchantability or fitness for a particular purpose. Notification of any errors will be appreciated.



WSP ENVIRONMENTAL (PTY) LTD
 WSP HOUSE, 1 ON LANGFORD, LANGFORD ROAD, WESTVILLE 3632
 P O BOX 1442, WESTVILLE 3630, RSA
 Tel +27 (0)31 240 8860, Fax +27 (0)31 240 8861, wspe@wspgroup.co.za

DATA SOURCE:
 Service Layer Credits: Source: Esri, Maxar, GeoEye, Earthstar
 Geographics, CNES/Airbus DS, USDA, USGS, AeroGRID, IGN,
 and the GIS User Community

COORDINATE SYSTEM: HARTEBEESTHOEK94 LO21

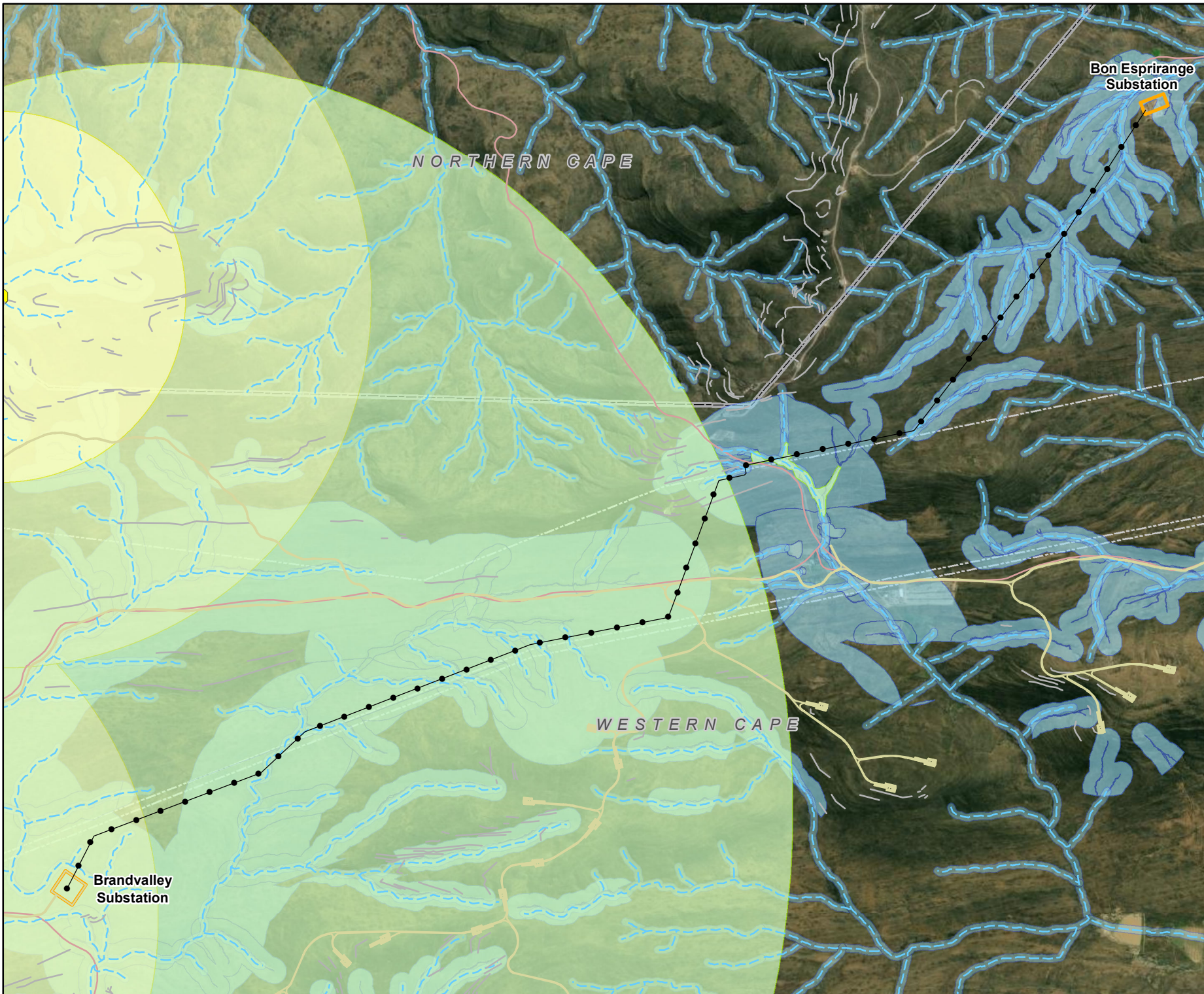
PROJECT TITLE:
 EURONOTUS CLUSTER

SCALE: 1:40 000 **DRAWN BY:** TS

DATE: 2021/11/24 **REVIEWED BY:** AS










FIGURE NO: **PROJECT NO:** 41103473 **REV:**

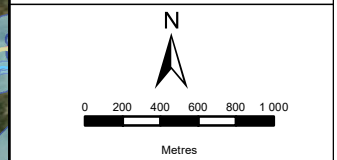
© COPYRIGHT RESERVED
The content of this document is privileged and confidential and may not be disclosed or reproduced without the express authorisation of the author, being "WSP Environmental (Pty) Ltd"



BRANDVALLEY ENVIRONMENTAL SENSITIVITIES

Legend

-  Brandvalley Authorised Powerline
-  Outcrop Ridges
-  Eagle Nest
-  Rivers - Non perennial
-  Substations
-  Eagle Nests (buffer 1.5 & 3km)
-  Ecologically Sensitive Areas
-  Rivers (buffer 32m)
-  Aquatic features (including applicable buffers)



DISCLAIMER
 The information on this figure was derived from various digital databases available to WSP Environmental (Pty) Ltd. All information is provided "as is" and it must be acknowledged that data, information, and maps are dynamic and in a constant state of maintenance, correction and update. WSP Environmental (Pty) Ltd cannot accept any responsibility for errors, omissions, or positional accuracy where it has not been directly responsible for the production of the data referenced. There are no warranties, expressed or implied, as to the use of this information, including the warranty of completeness or fitness for a particular purpose. Notification of any errors will be appreciated.



WSP ENVIRONMENTAL (PTY) LTD
 WSP HOUSE, 1 ON LANGFORD, LANGFORD ROAD, WESTVILLE 3632
 P O BOX 1442, WESTVILLE 3630, RSA
 Tel +27 (0)31 240 8860, Fax +27 (0)31 240 8861, wspe@wspgroup.co.za

DATA SOURCE:
 Service Layer Credits: Source: Esri, Maxar, GeoEye, Earthstar
 Geographics, CNES/Airbus DS, USDA, USGS, AeroGRID, IGN,
 and the GIS User Community

COORDINATE SYSTEM: HARTBEESTHOEK94 LO21

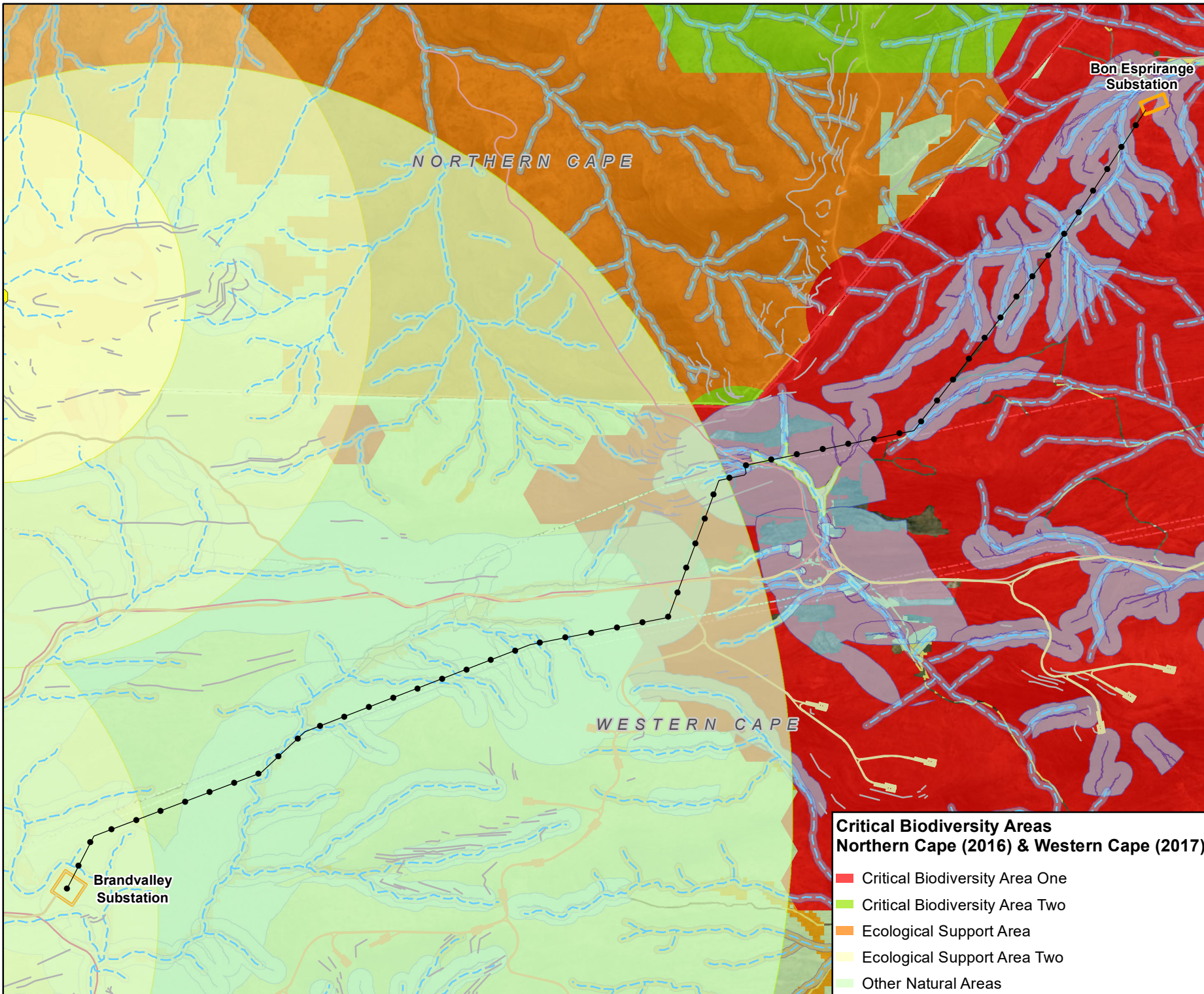
PROJECT TITLE:
 EURONOTUS CLUSTER

SCALE: 1:40 000 **DRAWN BY:** TS

DATE: 2022/04/28 **REVIEWED BY:** AS

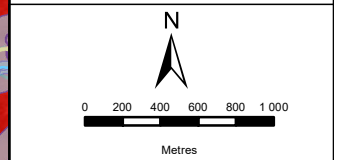
FIGURE NO: **PROJECT NO:** 41103473 **REV:**

© COPYRIGHT RESERVED
 The content of this document is privileged and confidential and may not be disclosed or reproduced without the express authorisation of the author, being "WSP Environmental (Pty) Ltd"



**BRANDVALLEY
ENVIRONMENTAL
SENSITIVITIES**

- Legend**
- Brandvalley Authorised Powerline
 - Outcrop Ridges
 - Eagle Nest
 - Rivers - Non perennial
 - ▭ Substations
 - Eagle Nests (buffer 1.5 & 3km)
 - Ecologically Sensitive Areas
 - Rivers (buffer 32m)
 - Aquatic features (including applicable buffers)



DISCLAIMER
The information on this figure was derived from various digital databases available to WSP Environmental (Pty) Ltd. All information is provided "as is" and it must be acknowledged that data, information, and maps are dynamic and in a constant state of maintenance, correction and update. WSP Environmental (Pty) Ltd cannot accept any responsibility for errors, omissions, or positional accuracy where it has not been directly responsible for the production of the data referenced. There are no warranties, expressed or implied, as to the use of this information, including the warranty of completeness or fitness for a particular purpose. Notification of any errors will be appreciated.



WSP ENVIRONMENTAL (PTY) LTD
 WSP HOUSE, 1 ON LANGFORD, LANGFORD ROAD, WESTVILLE 3632
 P O BOX 1442, WESTVILLE 3630, RSA
 Tel +27 (0)31 240 8860, Fax +27 (0)31 240 8861, wspe@wspgroup.co.za

**Critical Biodiversity Areas
Northern Cape (2016) & Western Cape (2017)**

- Critical Biodiversity Area One
- Critical Biodiversity Area Two
- Ecological Support Area
- Ecological Support Area Two
- Other Natural Areas

DATA SOURCE: Service Layer Credits: Source: Esri, Maxar, GeoEye, Earthstar Geographics, CNES/Airbus DS, USDA, USGS, AeroGRID, IGN, and the GIS User Community

COORDINATE SYSTEM: HARTBEESTHOEK94 LO21

PROJECT TITLE:
EURONOTUS CLUSTER

SCALE: 1:40 000 **DRAWN BY:** TS

DATE: 2022/04/28 **REVIEWED BY:** AS

FIGURE NO: **PROJECT NO:** 41103473 **REV:**

© COPYRIGHT RESERVED
The content of this document is privileged and confidential and may not be disclosed or reproduced without the express authorisation of the author, being "WSP Environmental (Pty) Ltd"