

**Table 1: Potential I&APs**

Name	Designation	Organisation	Address
Dawid Kruiper Local Municipality - Mr E Ntoba	(Landowner of solar PV and BESS site)	Dawid Kruiper Local Municipality	Civic Centre, Mutual Street, Upington, 8801
Mr Wilemse	(Landowner of telecom tower site)	Private	
Cllr Magrieta Eiman	Councillor of Ward 16	Dawid Kruiper Local Municipality & Member of Mier Community	Civic Centre, Mutual Street, Upington, 8801
Mr E Ntoba	Municipal Manager	Dawid Kruiper Local Municipality (Local Development and Tourism)	Civic Centre, Mutual Street, Upington
Jeremy du Plessis		Dawid Kruiper Local Municipality	Civic Centre, Mutual Street, Upington
		ZF Mgcauw District Municipality	Cnr Nelson Mandela Avenue & Upington 26 Road, Upington
	Obstacle Inspector	South African Civil Aviation Authority: Obstacle Applications	Building 16, Treur Close, Waterfall Park, Bekker Street, Midrand
Lizell Stroh	Obstacle Inspector	South African Civil Aviation Authority: Obstacle Applications	Building 16, Treur Close, Waterfall Park, Bekker Street, Midrand
Mahlatse Shubane	(Competent authority)	Department of Forestry, Fisheries and the Environment	473 Steve Biko & Soutpansberg Roads, Arcadia, Pretoria, 0083
Olivia Letlalo	(Competent authority)	Department of Forestry, Fisheries and the Environment	473 Steve Biko & Soutpansberg Roads, Arcadia, Pretoria, 0083
Thando Booi	(Competent authority – case officer)	Department of Forestry, Fisheries and the Environment	473 Steve Biko & Soutpansberg Roads, Arcadia, Pretoria, 0083
Makhosi Yeni	(Competent authority)	Department of Forestry, Fisheries and the Environment	473 Steve Biko & Soutpansberg Roads, Arcadia, Pretoria, 0083

Name	Designation	Organisation	Address
	(Commenting authority)	Northern Cape: Department of Cooperative Governance, Human Settlements and Traditional Affairs	Larry Moleko Louw Building 9 Cecil Sussman Road Kimberley 8301
	(Commenting authority)	Northern Cape Department: Roads and Public Works	9-11 Stokroos Street, Squarehill Park, Kimberley, 8301
	(Commenting authority)	Northern Cape: Department of Economic Development and Tourism	Metlife Towers, 13th Floor, Cnr Stead & Knight Streets, Kimberley
Doreen Wergh	(Commenting authority)	Northern Cape Province: Department of Environmental Affairs and Nature Conservation	90 Long Street, Sasco Building, Kimberley
Khosa Tsunduka	(Commenting authority)	Department of Water and Sanitation	Sedibeng Building, 185 Francis Baard Street, Pretoria
Gawie van Dyk	(Commenting authority)	Department of Water and Sanitation – Northern Cape (Kimberley)	28 Central road Beaconsfield Kimberley 8300
Collin Louw	Chairman	Khomani San Communal Property Association  South African San Council	Upington
Charles Page	Consultant  Chairman	Department of Labour (2015-2018)  Kalahari Red Dune Route	Near Molopo Kalahari Lodge, off R31  26°56'14.30"S; 20°39'36.25"E
Retha Stadler	Owner	Loch Maree Guest House  Kalahari Red Dune Route	Unnamed Road, off R31  27° 6'57.76"S

Name	Designation	Organisation	Address
	Marketing Manager		20°29'52.41"E
Hendrik Bott	Local Business Owner & Member of Mier Community	Kalahari Information Centre & Tented Camp	Off R31 26°44'53.05"S 20° 0'50.59"E
David Mayson	Consultant	Phuhlisani Solutions 3 (Advisory services for Khomani San)	
Carlyn Pitersen		Northern Cape Tourism Authority	Tourism House, 15 Villiers Street, Kimberley
	(Commenting authority)	South African Heritage Resources Agency	111 Harrington St, Zonnebloem, Cape Town
Carolyn Ah Shene Verdoorn Charl Van Rensburg		Birdlife South Africa	Isdell House, 17 Hume Road, Dunkeld West 2196, Johannesburg
Collin Louw	Community Liaison Officer	South African San Council	7 Devon Road, Lakeside, Cape Town
Johan Van Rensburg		Agri SA Northern Cape	Bebington Street Nr 2, Monument Heights, Kimberley
Katreina Dodds		Mier Community (Office	
Wille Philander	Community member	Mier Community	
D Smith		Mier Farmer's Union	

## **PUBLIC NOTICE: ENVIRONMENTAL AUTHORISATION APPLICATION FOR THE MIER RIETFONTEIN SOLAR PV AND BATTERY STORAGE PROJECT IN THE DAWID KRUIPER LOCAL MUNICIPALITY OF THE NORTHERN CAPE PROVINCE**

**Notice issued in terms of the National Environmental Management Act 107 of 1998 (NEMA) (as amended) and the Environmental Impact Assessment Regulations, 2014 (as amended).**

Eskom Holdings SOC Ltd ("Eskom") wishes to apply for an Environmental Authorisation of the Mier Rietfontein Solar PV and Battery Storage Project.

The preferred sites for the solar PV and BESS site (~10 ha) and the telecommunications tower site (~ 0.0225 m<sup>2</sup>) are located near the town of Rietfontein, along the R31, in the Dawid Kruijer Local Municipality. The Dawid Kruijer Local Municipality forms part of the ZF Mgcawu District Municipality in the Northern Cape Province.

The proposed Project includes the following infrastructure:

- Twelve independent PV blocks of 170 kilowatts (kW) each, with a total installed capacity of 2 040 kW.
- Eleven independent BESS of 140 kW (560 kilowatt-hours (kWh)) each, with a total installed capacity of 1 540 kW (or 1.54 MW) and 6 160 kWh.
- Underground AC cables to connect the PV and BESS to the Mier switching station and overhead cables to connect the Mier switching station to the existing Rietfontein 33kV feeder.
- Operations and maintenance building (200 m<sup>2</sup>) with control room, office, ablution facilities, server and equipment room, and spares storeroom.
- A telecommunications tower with a small equipment room to communicate with the BESS site.
- Access road (6 m wide), perimeter road (5 m wide), and internal roads (5 m wide). All roads will be gravelled and treated with a polymer binder to minimise dust.

Golder Associates Africa (Pty) Ltd is an independent environmental and engineering company, which has been appointed to undertake the amendment application on behalf of Eskom.

### **INVITATION TO REGISTER AS AN INTERESTED AND AFFECTED PARTY, COMMENT AND ATTEND A PUBLIC OPEN HOUSE**

Interested and affected parties (I&APs) are invited to register and comment on the draft BAR. The draft BAR will be available for 30 days from 30 August 2021 until 30 September 2021. Electronic copies of the draft BA report will be available on request from the Public Participation Office (contact details below) or online via the following website: <https://www.golder.com/global-locations/africa/south-africa-public-documents/>

The public is cordially invited to attend a public open house at the Mier Tourism, Kalahari Information Centre & Tented Camp from 15h00 to 18h00 on 1 September 2021. All relevant COVID-19 directives will be followed strictly.

In terms of the Protection of Personal Information Act, personal information provided by I&APs will only be used for the sole purposes of this Project and will only be shared with the relevant Government Departments as per the regulatory requirements and will not be shared with anyone else without their consent.

**To register as an I&AP and obtain more information, please contact  
Public Participation Office: Golder Associates Africa (Pty) Ltd.  
PO Box 6001, Halfway House, 1685, Tel: (011) 254 4800, Fax: (011) 86 582 1561  
E-mail: [PPoffice@golder.co.za](mailto:PPoffice@golder.co.za)**

*Date of the advert: 19 August 2021*



**ESKOM HOLDINGS SOC LTD: AANSOEK VIR N  
OMGEWINGSMAGTIGING VIR DIE BEOOGDE MIER RIETFONTEIN  
FOTOVOLTAÏESE SONKRAG EN BATTERYBERGINGSPROJEK IN DIE  
DAWID KRUIPER PLAASLIKE MUNISIPALITEIT VAN DIE NOORD-  
KAAP PROVINSIE**

Kennisgewing uitgereik ingevolge die Wet op Nasionale Omgewingsbestuur 107 van 1998 (NEMA) (soos gewysig) sowel as die Omgewingsimpakstudieregulasies, 2014 (soos gewysig).

Eskom Holdings SOC Ltd ("Eskom") wil aansoek doen vir 'n omgewingsmagtiging vir die voorgestelde Mier Rietfontein Fotovoltaïese Sonkrag (PV) en batterybergings (BESS) Projek.

Die voorkeurterreine vir die Projek (~10 ha) en die telekommunikasietoring (~ 0.0225 m<sup>2</sup>) is sowat 1km wes van die dorp Rietfontein, langs die R31 in die Dawid Kruiper Plaaslike Munisipaliteit, geleë. Die Dawid Kruiper Plaaslike Munisipaliteit vorm deel van die ZF Mgcawu Distriksmunisipaliteit in die Noord-Kaap.

Die voorgestelde Projek sluit die gepaardgaande infrastruktuur in:

- Twaalf onafhanklike PV blokke van 170 kilowatt (kW) elk, met 'n totale geïnstalleerde kapasiteit van 2 040 kW.
- Elf onafhanklike BESS'e van 140 kW (560 kilowatt-uur (kWh)) elk, met 'n totaal geïnstalleerde kapasiteit van 1 540 kW and 6160 kWh.
- Ondergrondse wisselstroom (WS) kables om die PV en BESS aan die Mier-skakelstasie te koppel, en oorhoofse kables om die Mier-skakelstasie met die bestaande Rietfontein 33kV toevoer te koppel.
- Werk- en instandhoudingsgebou (200 m<sup>2</sup>) met 'n beheerkamer, kantoor, ablusiegeriewe, netwerk bediener, toerustingkamer en 'n onderdele stookkamer.
- 'n Telekommunikasietoring met 'n klein toerustingkamer, om sodoende met die BESS webwerf te kommunikeer.
- Toegangspad (6 m breed), omtrekpad (5 m breed), en interne paaie (5 m breed). Die paaie is gruispaaie wat met 'n polimeerbinder behandel sal word om stof te vermy.

Golder Associates Africa (Edms) Bpk (Golder), 'n onafhanklike omgewingsassesseringspraktisyn, is deur Eskom aangestel om die BA-proses vir die beoogde Projek namens hulle te onderneem.

**UITNODIGING AAN DIE PUBLIEK OM TE REGISTREER, KOMMENTAAR TE LEWER EN N  
PUBLIEKE OPEDAG BY TE WOON.**

Belangstellendes en geaffekteerde partye word uitgenooi om te registreer en kommentaar te lewer op die konsep basiese assesseringsverslag vir die beoogde projek. Die konsepverslag sal vir 'n tydperk van 30 dae (vanaf 30 Augustus 2021 tot 30 September 2021) vir kommentaar beskikbaar wees. Elektroniese afskrifte van die verslag is op versoek van die Openbare Deelname Kantoor (kontakbesonderhede hieronder) of aanlyn beskikbaar op die webwerf: <https://www.golder.com/global-locations/africa/south-africa-public-documents/>

Die publiek word verder vriendelik uitgenooi na 'n publieke opedag van 15h00 tot 18h00 op 1 September 2021 by die Mier Tourism, Kalahari Information Centre & Tented Camp. Die relevante COVID-19 voorskrifte sal streng nagevolg word.

Ingevolge die Wet op die Beskerming van Persoonlike Inligting sal persoonlike inligting wat deur Belangstellendes en geaffekteerde partye verskaf word, slegs vir die uitsluitlike doeleindes van hierdie projek gebruik word. Persoonlike inligting sal slegs met die betrokke staatsdepartemente gedeel word volgens die regulatoriese vereistes en sal nie sonder die toestemming van die Belangstellendes en geaffekteerde partye met enigiemand anders gedeel word nie.

**VIR MEER INLIGTING, KONTAK ASSEBLIEF:**

Public Participation Office, Golder Associates Africa (Pty) Ltd;  
PO Box 6001, Halfway House, 1685, Tel: (011) 254 4800; Fax: (086) 582 1561

**E-pos: [PPoffice@golder.co.za](mailto:PPoffice@golder.co.za)**



*Advertensie datum: 19 Augustus 2021*



# NOTICE

## ESKOM HOLDINGS SOC LTD: ENVIRONMENTAL AUTHORISATION APPLICATION FOR THE MIER RIETFONTEIN SOLAR PV AND BATTERY STORAGE PROJECT IN THE DAWID KRUIPER LOCAL MUNICIPALITY OF THE NORTHERN CAPE PROVINCE (REF. NO. 2021-03-0)

### INVITATION TO REGISTER AS AN INTERESTED AND AFFECTED PARTY, COMMENT AND ATTEND A PUBLIC OPEN HOUSE.

Notice issued in terms of the National Environmental Management Act 107 of 1998 (NEMA) (as amended) and the Environmental Impact Assessment Regulations, 2014 (as amended).

Eskom Holdings SOC Ltd (“Eskom”) is committed to implementing clean energy projects. Battery Energy Storage System (“BESS”) projects, totalling 1 440 MWh, are to be installed at various locations across South Africa. The Northern Cape Operating Unit (“NCOU”) conducted an independent study of BESS projects at the Rietfontein-Rietfontein 33kV Overhead Line (the “Rietfontein feeder”). The study identified the need to increase capacity at the Rietfontein feeder.

Eskom proposes to develop the Mier Rietfontein Solar Photovoltaic (“PV”) and Battery Storage Project (the Project) to: (1) assist in addressing the current exceedances of notified maximum demand; (2) unlock the required capacity to help connect any new or waiting customers; (3) help account for any unforeseen increases in the electricity demand. The proposed Project includes the following infrastructure:

- Twelve independent PV blocks of 170 kilowatts (kW) each, with a total installed capacity of 2 040 kW.
- Eleven independent BESS of 140 kW (560 kilowatt-hours (kWh)) each, with a total installed capacity of 1 540 kW (or 1.54 MW) and 6 160 kWh.
- Underground AC cables to connect the PV and BESS to the Mier switching station and overhead cables to connect the Mier switching station to the existing Rietfontein 33kV feeder.
- O&M building (200 m<sup>2</sup>) with control room, office, ablution facilities, server and equipment room, and spares storeroom.
- A telecommunications tower with a small equipment room to communicate with the BESS site.
- Access road (6 m wide), perimeter road (5 m wide), and internal roads (5 m wide). All roads will be gravelled and treated with a polymer binder to minimise dust.

The preferred sites for the solar PV and BESS site (~10 ha) and the telecommunications tower site (~ 0.0225 m<sup>2</sup>) are located near the town of Rietfontein, along the R31, in the Dawid Kruiper Local Municipality. The Dawid Kruiper Local Municipality forms part of the ZF Mgcawu District Municipality in the Northern Cape Province (Figure 1).

The National Environmental Management Act 107 of 1998, as amended (“NEMA”), sets out the requirements for obtaining an EA for listed activities. It specifies two broad categories for undertaking an EA process for a listed activity, namely a Basic Assessment (BA) or a full Environmental Impact Assessment. The proposed Project triggers listed activities requiring a BA process. The competent authority for the EA application is the National Department of Forestry, Fisheries and the Environment (“DFFE”). Golder Associates Africa (Pty) Ltd (“Golder”), an independent environmental assessment practitioner, has been appointed by Eskom to undertake the BA process for the EA application of the Mier Rietfontein Solar PV and Battery Storage Project.

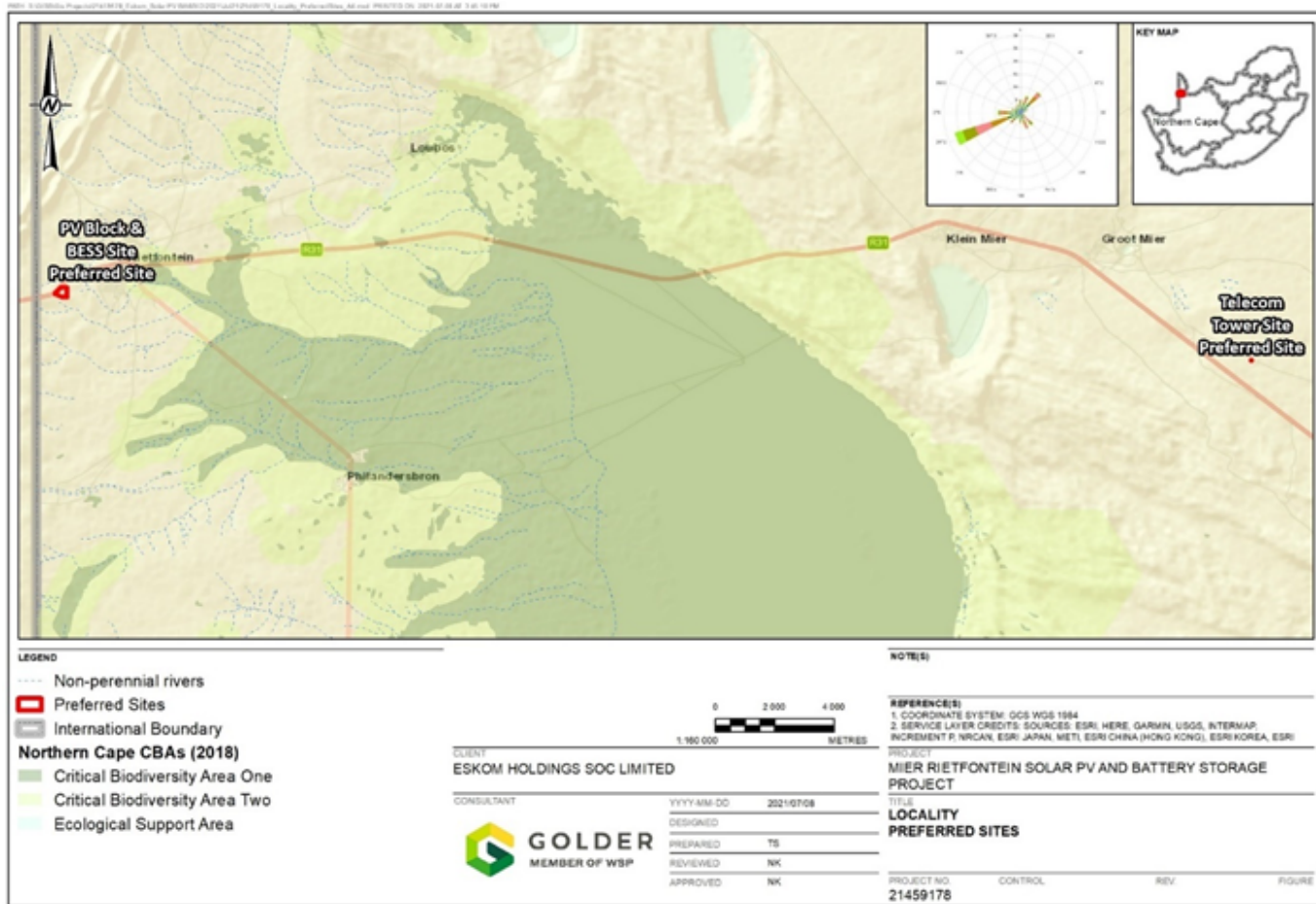


Figure 1: Locality of the preferred site.

### INVITATION TO REGISTER, COMMENT AND ATTEND A PUBLIC OPEN HOUSE

Interested and affected parties (I&APs) are invited to register and comment on the draft BAR. The draft BAR will be available for 30 days from **30 August 2021 to 30 September 2021**. Printed copies of the Draft BAR are available at the public places listed below.

Name of Public Place	Address
Mier Tourism, Kalahari Information Centre & Tented Camp	Namibiaway, Rietfontein, DKLM, Northern Cape
SAPS Rietfontein	Loubos Rd, Rietfontein, 8811
Golder Associates Africa	Maxwell Office Park, Magwa Crescent West, Waterfall City, Midrand

Electronic copies of the draft BAR will be available on request from the Public Participation Office (contact details below) or online via the following website: <https://www.golder.com/global-locations/africa/south-africa-public-documents/>

The public is cordially invited to attend a public open house at the Mier Tourism, Kalahari Information Centre & Tented Camp from 15h00 to 18h00 on **1 September 2021**. All relevant COVID-19 directives will be followed strictly.

In terms of the Protection of Personal Information Act, personal information provided by I&APs will only be used for the sole purposes of this Project and will only be shared with the relevant Government Departments as per the regulatory requirements and will not be shared with anyone else without their consent.

#### FOR MORE INFORMATION, PLEASE CONTACT:

Public Participation Office, Golder Associates Africa (Pty) Ltd;  
PO Box 6001, Halfway House, 1685, Tel: (011) 254 4800; Fax: (086) 582 1561

E-mail: [PPoffice@golder.co.za](mailto:PPoffice@golder.co.za)





# KENNISGEWING

## ESKOM HOLDINGS SOC LTD: AANSOEK VIR N OMGEWINGSMAGTIGING VIR DIE BEOOGDE MIER RIETFONTEIN FOTOVOLTAÏESE SONKRAAG EN BATTERYBERGINGSPROJEK IN DIE DAWID KRUIPER PLAASLIKE MUNISIPALITEIT VAN DIE NOORD-KAAP PROVINSIE (Ref. No. 2021-03-0)

### UITNODIGING OM AS 'N BELANGHEBBENDE EN GEAFFEKTEERDE PARTY TE REGISTREER EN KOMMENTAAR TE LEWER

#### Kennisgewing uitgereik ingevolge die Wet op Nasionale Omgewingsbestuur 107 van 1998 (NEMA) (soos gewysig) sowel as die Omgewingsimpakstudieregulasies, 2014 (soos gewysig).

Eskom Holdings SOC Ltd ("Eskom") is daartoe verbind om skoon energieprojekte te implementeer. Batterybergingsprojekte ("BESS"), tot 'n totale stoorkapasiteit van 1 440 MWh, moet op verskeie plekke regoor Suid-Afrika geïnstalleer word. Die Noord-Kaapse Bedryfsseenheid ("NCOU") het 'n onafhanklike studie van BESS-projekte by die Rietfontein-Rietfontein 33kV-oorhoofse lyn (die "Rietfontein-voerder") geloods. Die studie het die behoefte om kapasiteit by die Rietfontein-voerder te verhoog, geïdentifiseer.

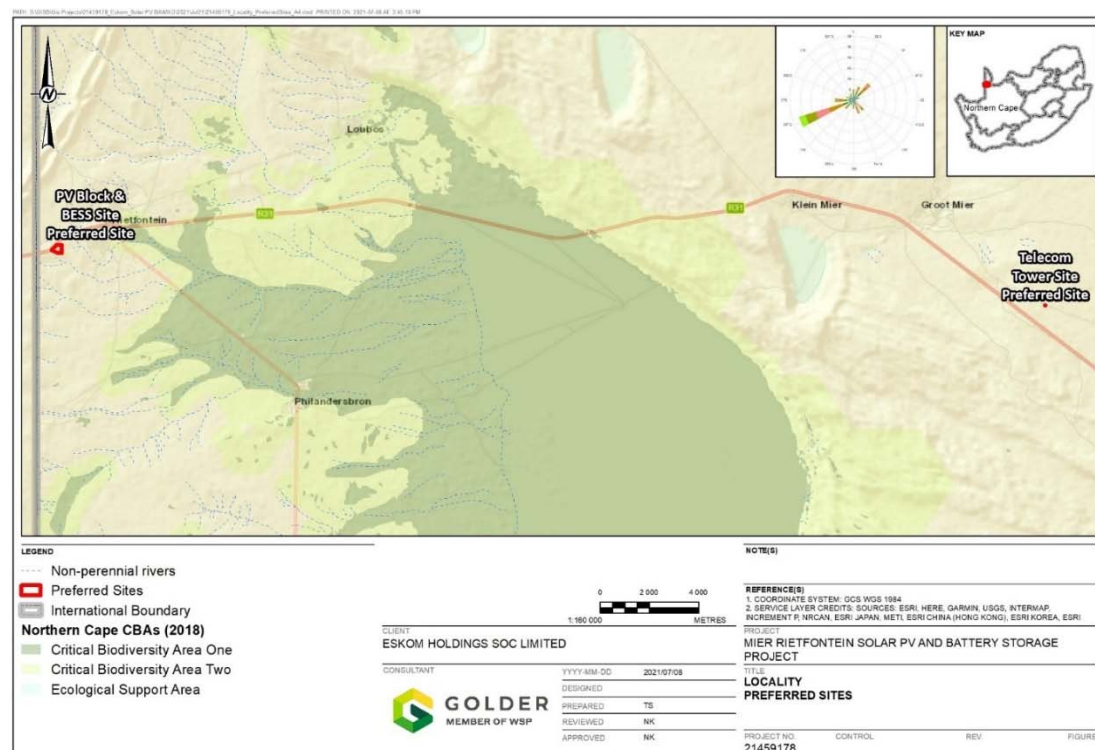
Eskom beoog om die Mier Rietfontein Fotovoltaïese Sonkrag ("PV") en Batterybergingsprojek ("die "Projek") te ontwikkel ten einde: (1) te help om die huidige oorskrywing van die gestelde maksimum elektrisiteitsaanvraag aan te spreek; (2) om die vereiste kapasiteit te ontsluit om enige nuwe of wagtende kliënte te verbind; en (3) help om enige onvoorsiene verhogings in die vraag na elektrisiteit te akkommodeer.

Die voorgestelde Projek sluit die gepaardgaande infrastruktuur in:

- Twaalf onafhanklike PV blokke van 170 kilowatt (kW) elk, met 'n totale geïnstalleerde kapasiteit van 2 040 kW.
- Elf onafhanklike BESS'e van 140 kW (560 kWh) elk, met 'n totaal geïnstalleerde kapasiteit van 1 540 kW and 6160 kWh.
- Ondergrondse wisselstroom (WS) kables om die PV en BESS aan die Mier-skakelstasie te koppel, en oorhoofse kables om die Mier-skakelstasie met die bestaande Rietfontein 33kV-toevoer te koppel.
- Werk- en instandhoudingsgebou (200 m<sup>2</sup>) met 'n beheerkamer, kantoor, ablusiegeriewe, netwerk bediener, toerustingkamer en 'n onderdele stoorkamer.
- 'n Telekommunikasietoring met 'n klein toerustingkamer, om sodoende met die BESS webwerf te kommunikeer.
- Toegangspad (6 m breed), omtrekpad (5 m breed), en interne paaie (5 m breed). Die paaie is gruispaaie wat me 'n polimeerbinder behandel sal word om stof te vermy.

Die voorkeurterreine vir die Projek (~10 ha) en die telekommunikasietoring (~ 0.0225 m<sup>2</sup>) is sowat 1km wes van die dorp Rietfontein, langs die R31 in die Dawid Kruipeer Plaaslike Munisipaliteit, geleë. Die Dawid Kruipeer Plaaslike Munisipaliteit vorm deel van die ZF Mgcawu Distriksmunisipaliteit in die Noord-Kaap.

NEMA, soos gewysig, bepaal die vereistes vir die verkryging van 'n omgewingsmagtiging vir 'n gelyste aktiwiteit. NEMA spesifiseer twee breë kategorieë. Die kategorie is 'n basiese assessering (BA) of 'n volledige omgewingsimpakstudie (EIA). Die voorgestelde Projek vereis 'n BA proses. Die Nasionale Departement van Bosbou, Visserye en die Omgewing ("DFFE") is die bevoegde gesag vir die omgewingsmagtigings proses. Golder Associates Africa (Edms) Bpk ("Golder"), 'n onafhanklike omgewingsassesseringspraktisyn, is deur Eskom aangestel om die BA-proses vir die beoogde Projek te onderneem.



### UITNODIGING AAN DIE PUBLIEK OM KOMMENTAAR TE LEWER EN N PUBLIEKE OPEDAG BY TE WOON

Belangstellendes en geaffekteerde partye word uitgenooi om te registreer en kommentaar te lewer op die konsep basiese assesseringsverslag vir die beoogde projek. Die konsepverslag sal vir 'n tydperk van 30 dae (vanaf **30 Augustus 2021** tot **30 September 2021**) vir kommentaar beskikbaar wees. Gedrukte afskrifte van die Draft BAR is beskikbaar by die onderstaande openbare plekke.

Name of Public Place	Address
Mier Tourism, Kalahari Information Centre & Tented Camp	Namibiaway, Rietfontein, DKLM, Northern Cape
SAPS Rietfontein	Loubos Rd, Rietfontein, 8811
Golder Associates Africa	Maxwell Office Park, Magwa Crescent West, Waterfall City, Midrand

Elektroniese afskrifte van die verslag is op versoek van die Openbare Deelname Kantoor (kontakbesonderhede hieronder) of aanlyn beskikbaar op die webwerf:

<https://www.golder.com/global-locations/africa/south-africa-public-documents/>

Die publiek word vriendelik uitgenooi om 'n publieke opedag van 15h00 tot 18h00 op **1 September 2021** by die Mier Tourism, Kalahari Information Centre & Tented Camp. Die relevante COVID-19 voorskrifte sal streng nagevolg word.

Ingevolge die Wet op die Beskerming van Persoonlike Inligting (POPIA) sal persoonlike inligting wat deur belangstellendes en geaffekteerde partye verskaf word, slegs vir die uitsluitlike doeleindes van hierdie projek gebruik. Diesulke inligting sal alleenlik met die betrokke staatsdepartemente gedeel word volgens die regulatoriese vereistes. Geen persoonlike inligting sal sonder die toestemming van die betrokke belangstellende en geaffekteerde partye met enigiemand anders gedeel word nie.



#### VIR MEER INLIGTING, KONTAK ASSEMBLIEF:

Public Participation Office, Golder Associates Africa (Pty) Ltd;  
PO Box 6001, Halfway House, 1685, Tel: (011) 254 4800; Fax: (086) 582 1561  
E-pos: PPoffice@golder.co.za



August 2021

## PURPOSE OF THIS DOCUMENT

The purpose of this background information document (BID) is to provide interested and affected parties (I&APs) with information about Eskom's intention to apply for an environmental authorisation for the Mier Rietfontein solar PV and battery storage project in the Dawid Kruijer Local Municipality in the Northern Cape province.

We would like to encourage stakeholders to register as I&APs and invite them to contribute comments, ask questions and raise issues of concern or suggestions for enhanced benefits.

Stakeholders are invited to register as I&APs and to comment on the Basic Assessment Report (BAR) and Environmental Management Programme Report (EMPR) by:

- Completing the enclosed Registration and Comment Sheet in writing or via email. Electronic copies of this document and the registration and comment sheet, are available for download at the following website: <https://www.golder.com/global-locations/africa/south-africa-public-documents/>.

## BACKGROUND

**Eskom Holdings SOC Ltd ("Eskom") is committed to implementing clean energy projects. Battery Energy Storage System ("BESS") projects, totalling 1 440 MWh, are to be installed at various locations across South Africa. These projects are expected to be executed in two phases.**

- Phase 1: Installation of BESS projects, totalling approximately 800 MWh, at Eskom distribution sites; and
- Phase 2: Installation of BESS projects, totalling approximately 640 MWh, at locations closer to the renewable power plant sites.

The KwaZulu-Natal, Eastern Cape, Western Cape, and Northern Cape operating units conducted preliminary studies to assess the suitability of selected sites for the Phase 1 installation of BESS on their electrical grids. Subsequently, the Northern Cape Operating Unit ("NCOU") conducted an independent study on the Phase 2 installation of BESS at the Rietfontein-Rietfontein 33kV Overhead Line (the "Rietfontein feeder").

The Rietfontein feeder is supplied by NamPower through the Mier 33kV Substation ("S/Stn"), located near Rietfontein Border Post. The Mier S/Stn is supplied by the Nabas-Rietfontein line on the Namibian side. This ~140 km line was built at 66 kV but is currently operated at 33 kV. On the South African side, the Rietfontein feeder supplies small rural towns, namely Rietfontein, Philandersbron, Loubos, Groot Mier, Klein Mier, and Welkom; as well as, three large power users, namely the Rietfontein Border Post, Kgalagadi Transfontier Park, and Botswana Power Corp.

Eskom has an international Energy Trading Agreement with Nampower for notified maximum demand ("NMD") of 1.5 megavolt amperes ("MVA"). Nampower is unable to increase the NMD to address shortages on the Rietfontein feeder due to limitations on the infrastructure on the NamPower side. Currently the Rietfontein feeder is constrained and new customers cannot be added to the network. As an alternative to increasing the capacity of the existing substations and overhead powerlines, the proposed Project will be developed to increase the capacity of the Rietfontein feeder.

Golder Associates Africa (Pty) Ltd ("Golder"), an independent environmental assessment practitioner, has been appointed by Eskom to undertake a basic assessment ("BA") process for the Mier Rietfontein Solar Photovoltaic ("PV") and Battery Storage Project ("the Project"), in Dawid Kruijer Local Municipality ("DKLM"), Northern Cape.

The purpose of the BA report ("BAR") is to present the environmental outcomes, impacts and residual risks of the proposed Project. The BAR will be submitted to the authorities, the National Department of Forestry, Fisheries and the Environment ("DFFE") in support of the environmental authorisation ("EA") application. The BAR is subjected to a public participation process in accordance with Chapter 6 of the Environmental Impact Assessment Regulations, 2014 ("EIA Regulations, 2014").

### FOR MORE INFORMATION, PLEASE CONTACT:

Public Participation Office; Golder Associates Africa (Pty) Ltd;  
PO Box 6001, Halfway House, 1685; Tel: 011 254 4800; Fax: 086 582 1561  
E-mail: [ppoffice@golder.co.za](mailto:ppoffice@golder.co.za)



# Project Location

The preferred sites for the solar PV with BESS, and telecommunications tower proposed Project are located near the town of Rietfontein, along the R31, in the Dawid Kruiper Local Municipality, in the ZF Mgcawu District Municipality, in the Northern Cape Province.

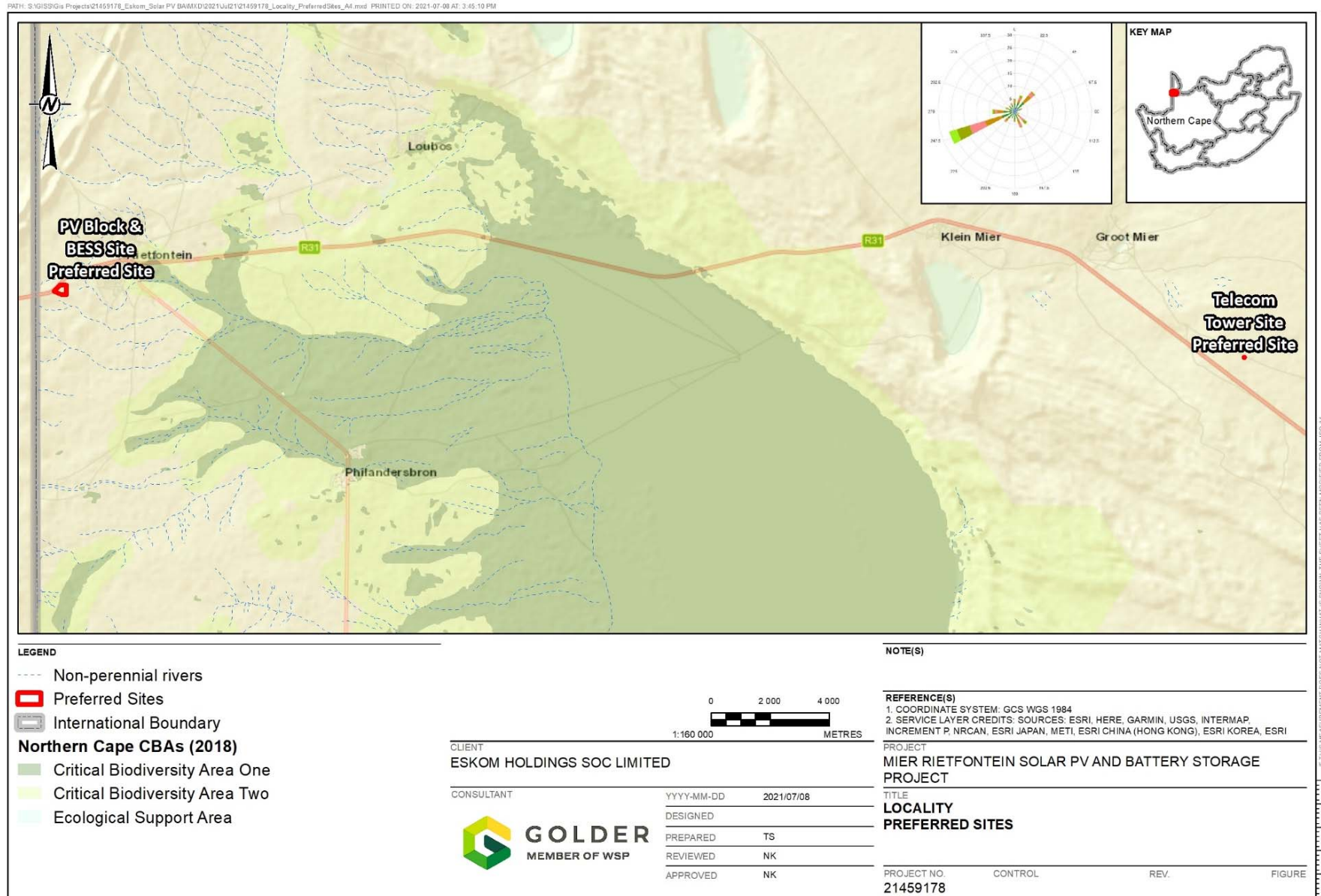


Figure 1: Locality of the solar PV and BESS site, and the telecommunications tower site for the proposed Project

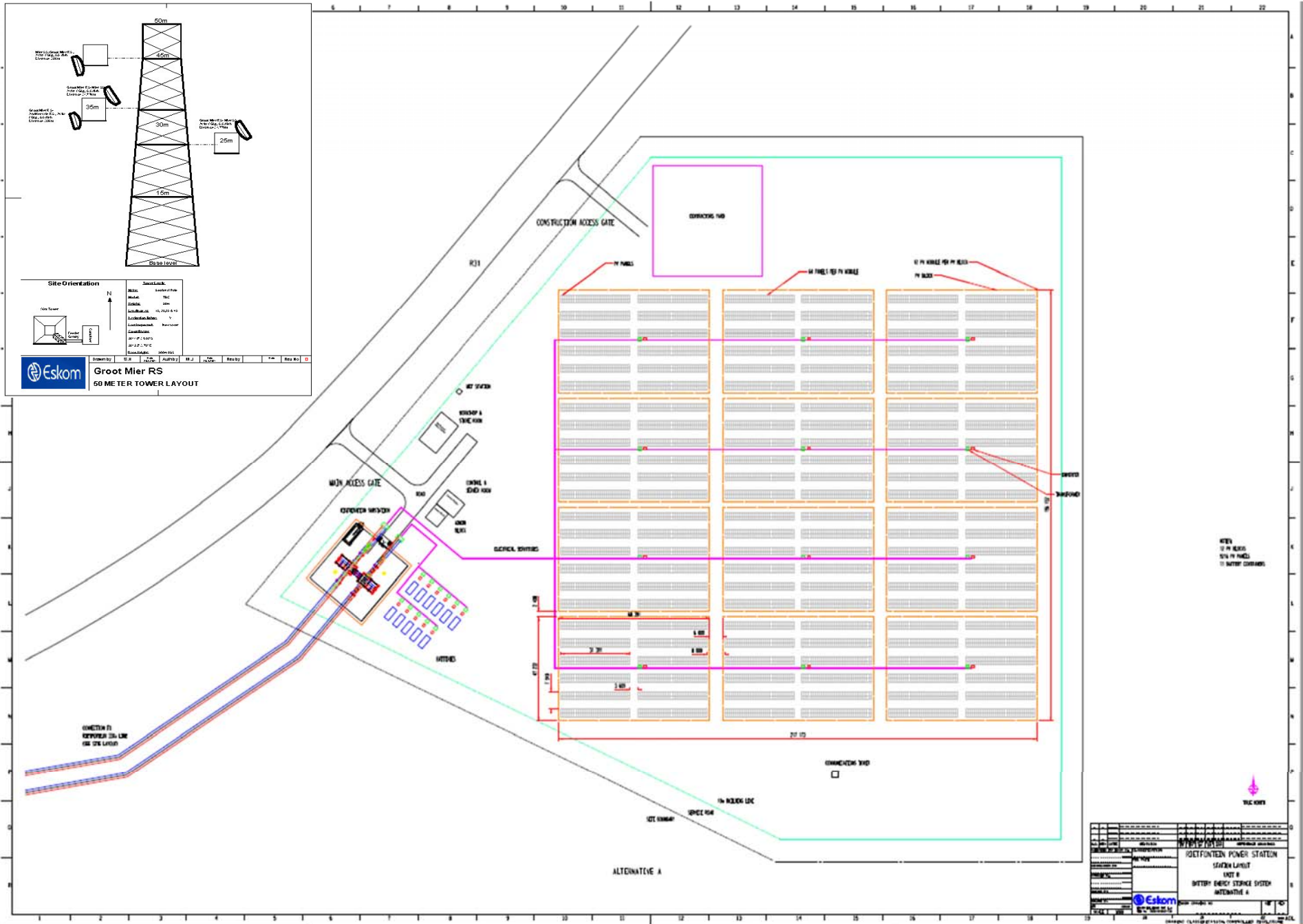


Figure 2: Solar PV and BESS, and telecommunications tower (inset) Project layout

# Project Motivation and Description

## Motivation

The proposed Project will assist in unlocking the required capacity to help connect any new or waiting customers. In addition it will address the current exceedances of Nampower's notified maximum demand. It furthermore, it will account for unforeseen increases in the demand for electricity.

## Description

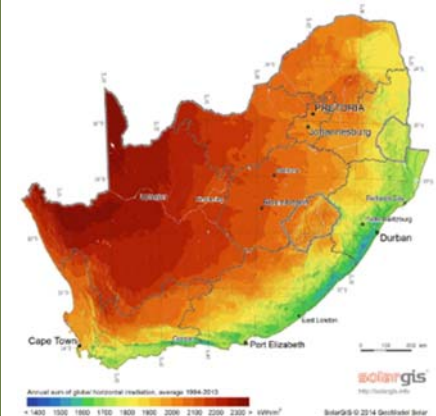
The proposed Project will consist of 12 independent PV blocks of 170 ("kW") kW each, with a total installed capacity of 2 040 kW (or 2.04 megawatts ("MW")). The proposed Project will also consist of 11 independent BESS of 140 kW (560 kWh) each, with a total installed capacity of 1 540 kW (or 1.54 MW) and 6 160 kWh (or 6.16 MWh). The area covering the PV blocks and BESS site is ~ 10 ha.

The installation of these solar PV blocks and BESS will be staggered according to the expected growth in electrical demand:

- Initial installation of 5 x 170 kW PV blocks and 4 x 140 kW BESS for the "electrification scenario"
- Installation of an additional 3 x 170 kW PV blocks and 3 x 140 kW BESS for the "LPU's scenario"
- Installation of an additional 4 x PV blocks and 4 x 140 kW for the "unforeseen demand scenario"

Underground AC cables will be used to connect the PV and BESS to the Mier switching station, while overhead cables will connect the Mier switching station to the existing Rietfontein 33kV feeder.

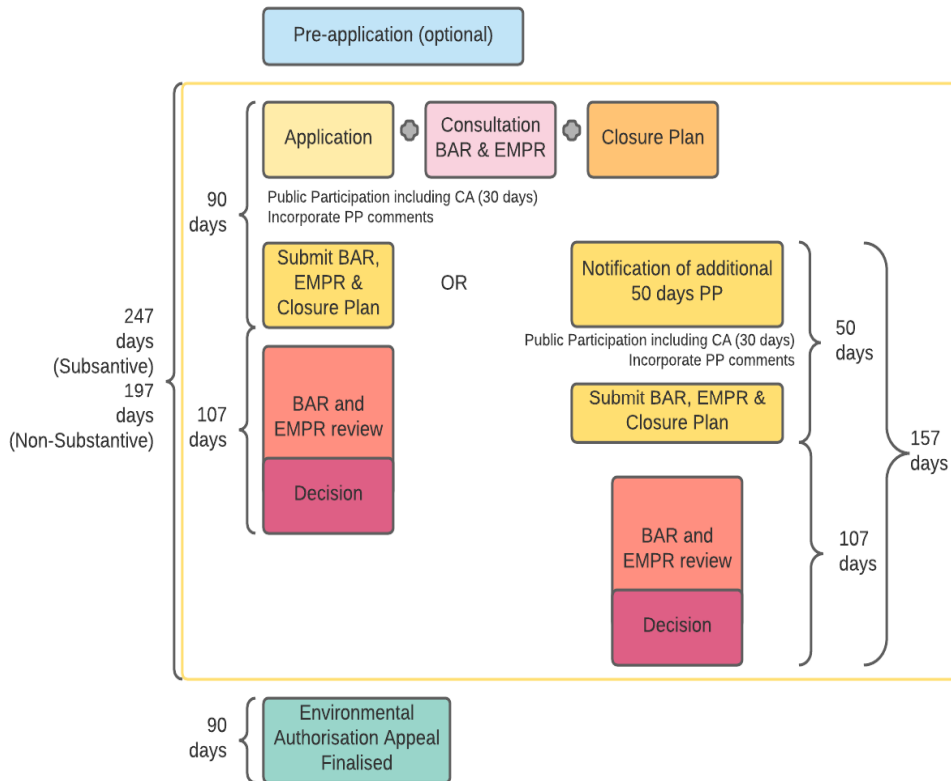
It is proposed that the sites will be unmanned and that the Mier Rietfontein solar PV and BESS Project will be remotely monitored and controlled. To ensure communication to the Project, a telecommunications tower to the proposed BESS site is required. The telecommunications tower will be positioned close to the village of Groot Mier along the R31. The footprint area for the tower is only 15 x 15 m<sup>2</sup>, which will also contain a small equipment room. The charging of the BESS from the PV blocks will done via network control, allowing for the PV blocks and BESS to operate independently from each other.





# Regulatory Processes and Opportunities for Comment

## Basic Assessment Process



The NEMA Listed Activities that are being applied for as part of the BA process to obtain an EA include:

### Listing Notice 1, 2014

#### Activity 1

The development of facilities or infrastructure for the generation of electricity from a renewable resource where-

- (ii) the output is 10 megawatts or less but the total extent of the facility covers an area in excess of 1 hectare; excluding where such development of facilities or infrastructure is for photovoltaic installations and occurs:
  - (a) within an urban area; or
  - (b) on existing infrastructure

#### Activity 12

The development of-

- (ii) infrastructure or structures with a physical footprint of 100 square metres or more; where such development occurs-
  - (a) within a watercourse;
  - (c) if no development setback exists, within 32 metres of a watercourse, measured from the edge of a watercourse.

#### Activity 14

The development and related operation of facilities or infrastructure, for the storage, or for the storage and handling, of a dangerous good, where such storage occurs in containers with a combined capacity of 80 cubic metres or more but not exceeding 500 cubic metres.

#### Activity 19

The infilling or depositing of any material of more than 10 cubic metres into, or the dredging, excavation, removal or moving of soil, sand, shells, shell grit, pebbles, or rock of more than 10 cubic metres from a watercourse.

#### Activity 27

The clearance of an area of 1 hectares or more, but less than 20 hectares of indigenous vegetation, except where such clearance of indigenous vegetation is required for-

- (i) the undertaking of a linear activity; or
- (ii) maintenance purposes undertaken in accordance with a maintenance management plan.

We will keep registered I&APs informed of project progress and more details regarding the EA application during the course of the BA process.

## BA Process for the EA Application

Section 24 of the National Environmental Management Act 107 of 1998, as amended (“NEMA”) sets out the requirements for obtaining an EA for listed activities. The Basic Assessment process for obtaining the EA is regulated by the EIA Regulations, 2014. The competent authority for the BA report is the National Department of Forestry, Fisheries and the Environment (“DFFE”).

# PUBLIC COMMENT INVITED ON THE BASIC ASSESSMENT REPORT

Golder would like to inform you that the draft BAR, which has been prepared as part of the EA application, is available for a public review period of 30 days, from **30 August 2021** until **30 September 2021**. In addition, an Public Open House will be held on at the Mier Tourism, Kalahari Information Centre & Tented Camp from 15h00 to 18h00 on 1 September 2021, in accordance with the relevant COVID-19 directives.

The purpose of the public review period is for I&APs to raise issues of concern and to comment on the application and the draft BAR. Following the comment period, the BAR will be submitted to the Department of Forestry, Fisheries and Environmental Affairs (the competent authorities), for review and a decision on the application. Printed copies of the Draft BAR are available at the public places listed below.

Name of Public Place	Address
Mier Tourism, Kalahari Information Centre & Tented Camp	Namibiaway, Rietfontein, DKLM, Northern Cape
SAPS Rietfontein	Loubos Rd, Rietfontein, 8811
Golder Associates Africa	Maxwell Office Park, Magwa Crescent West, Waterfall City, Midrand

Electronic copies of the draft BAR will be available on request from the Public Participation Office (contact details below) or online via the Golder website: <https://www.golder.com/global-locations/africa/south-africa-public-documents/>

## Your comment is Important

I&APs are invited to register and to lodge written comments regarding the abovementioned application. I&APs may comment on the application in any of the following ways to Golder:

- By completing the Registration and Comment Sheet enclosed with this BID;
- By writing a letter or providing additional written submissions; and
- By email, fax or telephone to the Public Participation Office.

### FOR MORE INFORMATION, PLEASE CONTACT:

**Public Participation Office**

**Golder Associates Africa (Pty) Ltd**

**PO Box 6001, Halfway House, 1685**

**Tel: (011) 254 4800; Fax: (086) 582 1561**

**E-mail: [PPoffice@golder.co.za](mailto:PPoffice@golder.co.za)**



In terms of the Protection of Personal Information Act (POPIA), personal information provided by I&APs will only be used for the sole purposes of this project and will only be shared with the relevant Government Departments as per the regulatory requirements and will not be shared with anyone else without consent.



**AGTERGROND INLIGTINGS DOKUMENT VIR ESKOM HOLDINGS SOC LTD.  
AANSOEK VIR OMGEWINGSMAGTIGING VIR DIE MIER RIETFONTEIN SONKRAG PV EN BATTERY STOOR PROJEEK  
IN DIE DAWID KRUIPER PLAASLIKE MUNISIPALITEIT, NOORD-KAAP PROVINSIE (Ref. No. 2021-03-0)**

## DOEL VAN HIERDIE DOKUMENT

Die doel van hierdie agtergrond inligtings dokument (AID) is om belangstellendes en/of geaffekteerde partye (B&GP's) te voorsien van agtergrond inligting oor die Mier Rietfontein-sonkrag-PV- en battery bergingsprojek en Eskom se voorneme om aansoek te doen vir 'n omgewingsmagtiging in die Dawid Kruijer Plaaslike Munisipaliteit in die Noord-Kaap.

U word hiermee uitgenooi om as 'n B&GP te registreer en kommentaar te lewer op die Basiese Asseseringsverslag (BA V) en Omgewingsbestuursprogram verslag (EMPR) deur die aangehegde kommentaar- en registrasievorm in te vul en terug te stuur.

Hierdie AID dokument sal u help om:

- te bepaal of u belangstel in en/of geraak word deur die voorgestelde projek;
- 'n beter begrip van die projek te kry ten einde kommentaar te kan lewer; en
- die omgewingsmagtigings proses te verstaan sodat u effektief kan deelneem.
- Elektroniese kopieë van hierdie dokument asook die registrasie- en kommentaarblad, is beskikbaar vir aflaai op die volgende webwerf:  
<https://www.golder.com/global-locations/africa/south-africa-public-documents/>.

## AGTERGROND INLIGTING

**Eskom Holdings SOC Ltd("Eskom") is daartoe verbind om skoon energieprojekte te implementeer. Battery Energy Storage System ("BESS") projekte, met 'n totaal van 1 440 MWh, wat op verskeie plekke regoor Suid-Afrika geïnstalleer word. Hierdie projekte sal na verwagting in twee fases uitgevoer word.**

- Fase 1: Installering van BESS-projekte, wat ongeveer 800 MWh by Eskom-verspreidingsnetwerk behoort; en
- Fase 2: Installering van BESS-projekte, wat ongeveer 640 MWh behoort, op plekke nader aan die hernubare kragentrales.

Die KwaZulu-Natal-, Oos-Kaap, Wes-Kaap en Noord-Kaapse bedryfs eenhede het voorlopige studies gedoen om die geskiktheid van geselekteerde terreine vir die Fase 1-installasie van BESS op hul elektriese roosters te evalueer. Daarna het die Noord-Kaapse Bedryfs eenheid (Northern Cape Operating Unit (NCOU)) 'n onafhanklike studie gedoen oor die Fase 2-installasie van BESS by die Rietfontein-Rietfontein 33kV-oorhoofse lyn (die "Rietfontein-voerder").

NamPower verskaf die Rietfontein voerder deur die Mier 33kV Substasie ("S/Stasie") geleë naby Rietfontein Grenspos. Die Mier S/Stasie word deur die Nabas-Rietfonteinlyn aan die Namibiese kant bedryf. Hierdie ~ 140 km lyn is gebou teen 66 kV, maar word tans bedryf teen 33 kV. Aan die Suid-Afrikaanse kant verskaf die Rietfontein-voerder klein plattelandse dorpie, naamlik Rietfontein, Philandersbron, Loubos, Groot Mier, Klein Mier en Welkom; asook drie groot kraggebruikers, naamlik die Rietfontein Grenspos, Kgalagadi Transfontierpark en Botswana Power Corp, van krag.

Eskom het 'n internasionale energie handelsooreenkoms met Nampower vir die maksimum vraag ("NMD") van 1,5 megavolt ampere ("MVA"). Nampower is nie in staat om die NMD te verhoog sodat tekorte aan die Rietfontein-voerder aan gesprek kan word nie weens die beperkings op die infrastruktuur aan die NamPower kant. Die Rietfontein voerder is huidiglik ingeperk en nuwe kliente kan nie by die netwerk gevoeg word nie. As alternatief tot die verhoging van kapasiteit van die bestaande substasies en oorhoofse kraglyne, sal die voorgestelde projek ontwikkel word om die kapasiteit van die Rietfontein-voerder te verhoog.

Golder Associates Africa (Edms) Bpk ("Golder"), 'n onafhanklike omgewings assesserings besigheid, is deur Eskom aangestel om 'n basiese assesseringsproses ("BA") vir die Mier Rietfontein Sonkrag Fotovoltaïese ("PV") en Battery bergingsprojek("die"Projek"), in Dawid Kruijer Plaaslike Munisipaliteit ("DKLM"), Noord-Kaap, te onderneem.

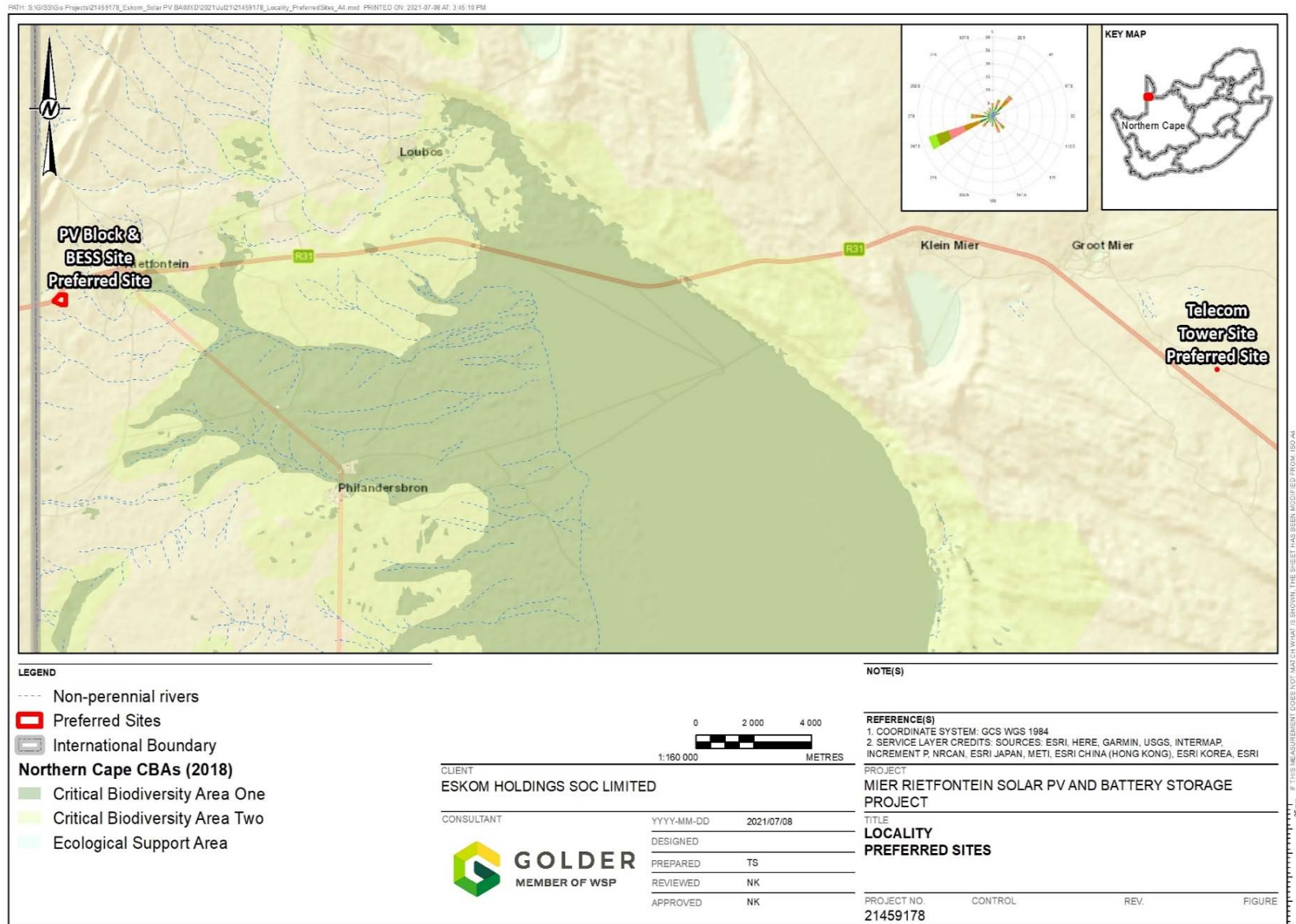
Die doel van die BA-verslag ("BAV") is om die omgewingsuitkomst, impakte en oorblywende risiko's van die voorgestelde projek aan te bied. Die BAV sal aan die owerhede, die Nasionale Departement van Bosbou, Visserye en Omgewing ("DFFE") voorgelê word ter ondersteuning van die omgewingsmagtiging ("EA") aansoek. Die BAV is onderworpe aan 'n openbare deelname proses in ooreenstemming met Hoofstuk 6 van die Omgewingsimpakstudie regulasies, 2014 ("OIS Regulasies, 2014).

### VIR MEER INLIGTING, KONTAK ASSEMBLIEF:

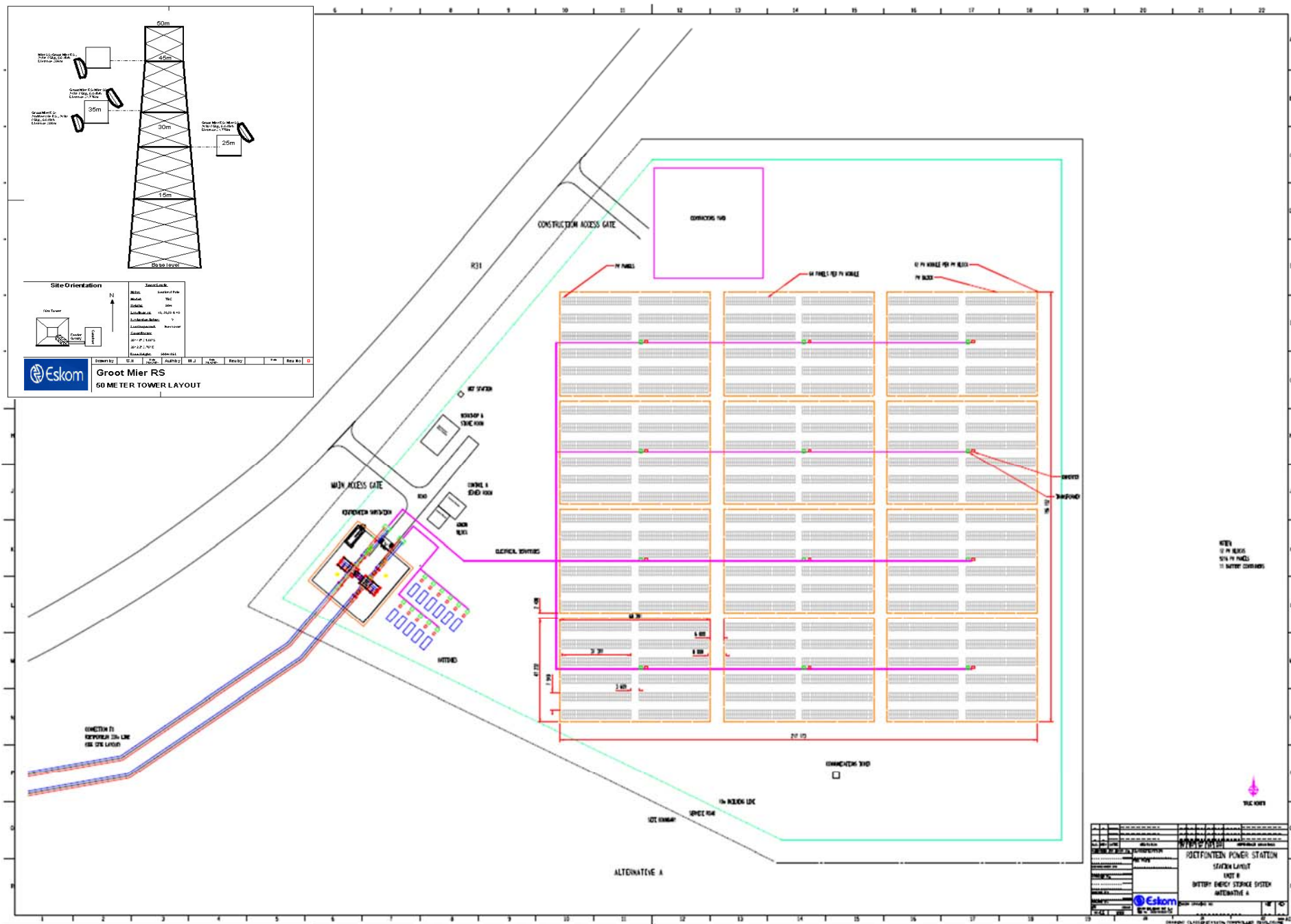
Openbare Deelname Kantoor; Golder Associates Africa (Edms) Bpk; Posbus 6001, Halfway House, 1685; Tel: 011 254 4800;  
Faks: 086 582 1561E-pos: ppoffice@golder.co.za

# Projek ligging

Die voorkeur gebied vir die sonkrag PV met BESS, en telekommunikasie toring voorstel is geleë naby die dorp Rietfontein, langs die R31, in die Dawid Kruiper Plaaslike Munisipaliteit, in die ZF Mgcawu Distrik Munisipaliteit, in die Noord-Kaap Provinsie.



Figuur 1: Ligging van die sonkrag PV en BESS en die telekommunikasie toring gebied van die voorgestelde projek



Figur 2: Sonkrag PV en BESS, en telekommunikasie toring (inset) Projek uitleg



# Projek Motivering en Beskrywing

## Motivering

Die voorgestelde Projek sal die nodige kapasiteit ontsluit om nuwe of afwagende kliënte te kan koppel. Verder sal dit ook die aanvraag vir onvoorsiene verhogings in ag neem.

## Beskrywing

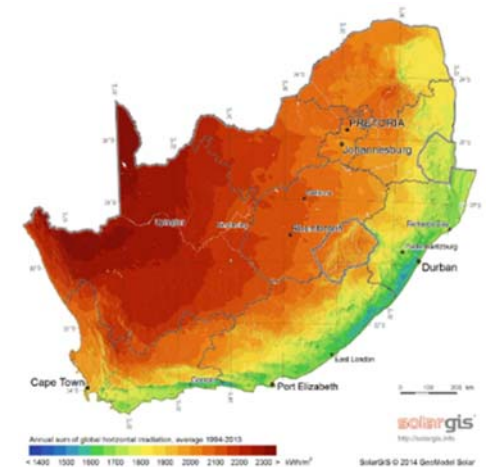
Die voorgestelde projek sal bestaan uit 12 onafhanklike PV-blokke van 170 ("kW") kW elk, met'n totale geïnstalleerde kapasiteit van 2 040 kW (of 2.04 megawatt ("MW")). Die voorgestelde projek sal ook bestaan uit 11 onafhanklike BESS van 140 kW (560 kWh) elk, met 'n totale geïnstalleerde kapasiteit van 1 540 kW (of 1.54 MW) en 6 160 kWh (of 6.16 MWh). Die area wat die PV blokke en BESS gebiede dek, is ~ 10 ha.

Die installering van hierdie sonkrag PV blokke en BESS sal in fases plaasvind, afhange van die verwagte groei in elektriese aanvraag. Die voorlopige installering sal as volg plaasvind:

- Aanvanklike installasie van 5 x 170 kW PV blokke en 4 x 140 kW BESS vir die "elektrifisering scenario"
- Installering van 'n bykomende 3 x 170 kW PV blokke en 3 x 140 kW BESS vir die "LPU's scenario"
- Installering van 'n bykomende 4 x PV blokke en 4 x 140 kW vir die "onvoorsiene aanvraag scenario"

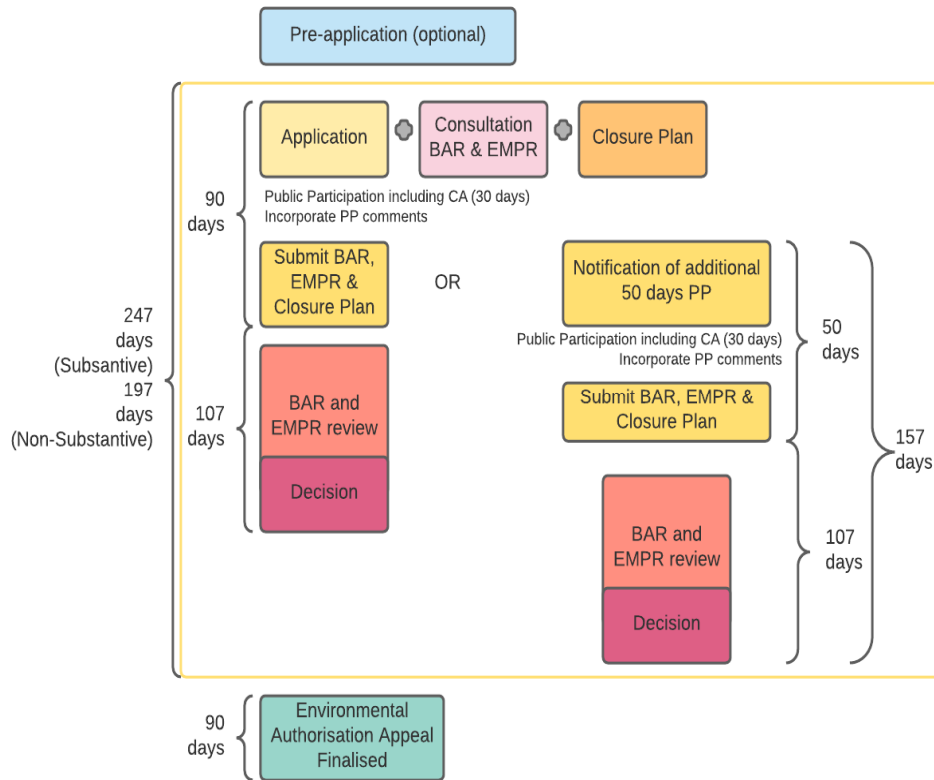
Ondergrondse AC-kabels sal gebruik word om die PV en BESS aan die Mier-skakelstasie te koppel, terwyl oorhoofse kabels die Mier-skakelstasie aan die bestaande Rietfontein 33kV-voerder sal koppel.

Daar word voorgestel dat die terrein onbeman sal wees en dat die Mier Rietfontein sonkrag PV en BESS Projek afstandbeheer en gekontroleer word. Om kommunikasie te verseker word 'n telekommunikasie toring vir die voorgestelde BESS projek voorgestel. Die telekommunikasie toring sal naby die dorpie Groot Mier langs die R31 geïnstalleer word. Die voetspoor area vir die toring is 15 x 15 m, asook 'n klein toerusting kamer. Die laai van die BESS van die PV blokke sal gedoen word deur middel van netwerk beheer, wat dit moontlik maak dat die PV blokke en BESS onafhanklik van mekaar kan funksioneer.



# Regulatoriese Prosesse en Geleentheid vir Kommentaar

## Basic Assessment Process



### BA Prosesse vir EA Aansoek

Artikel 24 van die Nasionale Omgewingsbestuur Wet 107 van 1998, soos gewysig ("NEMA") verwys na die vereistes om 'n EA aansoek gelysde aktiwiteite soos aansoek voor gedoen moet word. Die basiese assessering ("BA") proses is gereguleer deur die Omgewingsimpakstudie regulasies, 2014. Die bevoegde-oowerheid vir die basiese assesserings verslag is die Nasionale Departement van Bosbou, Visserye en Omgewing ("DFFE").

Die NEMA gelysde aktiwiteite vorm deel van die basiese assessering "BA" proses om 'n EA goedkeuring te kry, en sluit die volgende in:

#### Notering Kennisgewing 1, 2014

##### Aktiwiteit 1

Die ontwikkeling van fasiliteite of infrastrukture vir die generering van elektrisiteit vanaf 'n hernubare hulpbron waar:

(ii) die uitset 10 megawatt of minder is, maar die totale omvang van die fasiliteit dek 'n area van meer as 1 hektaar; uitgesluit waar sulke ontwikkeling van die fasiliteite of infrastrukture is vir fotovoltaïese-installasies en plaasvind:

- (a) binne 'n stedelike area; of
- (b) op bestaande infrastruktuur

##### Aktiwiteit 12

Die ontwikkeling van-

- (ii) infrastruktuur of strukture met 'n fisiese voetspoor van 100 vierkante meter of meer; waar sodanige ontwikkeling plaasvind-
- (a) binne 'n waterloop;
- (c) indien geen ontwikkelings-lyn bestaan nie, binne 32 meter van 'n waterloop gemeet van die rand van die waterloop.

##### Aktiwiteit 14

Die ontwikkeling en verwante werkinge of fasiliteite of infrastruktuur, vir die stoor, of vir die stoor en hantering, van gevaarlike goedere, waar sodanige berging voorkom in houe met 'n gesamentlike kapasiteit van 80 kubieke meter of meer, maar nie meer as 500 kubieke meter.

##### Aktiwiteit 19

Die terugvoer of neersit van enige materiaal van meer as 10 kubieke meter in of die uithaal, uitgraving, verwydering of verskuif van grond, sand, skulpe, klippies of rots van meer as 10 kubieke meter vanaf 'n waterloop.

##### Aktiwiteit 27

Die skoonmaak van 'n area van 1 hektaar of meer, maar minder as 20 hektaar, van indringer plante, behalwe waar die skoonmaak van die plant nodig is vir-

- (i) die onderneming van 'n lineêre aktiwiteit; of
- (ii) instandhoudings doeleindes soos gestipuleer in 'n instandhoudingsplan.

Ons sal geregistreerde B&GP's op hoogte hou van projekvordering en besonderhede verskaf romdom die Omgewings aansoek tydens die BA-proses.



# OPENBARE KOMMENTAAR OP DIE BASIESE ASSESSERINGSVERSLAG

Golder lig die publiek in dat the voorlopige basiese assessering verslag, wat voorberei word as deel van die EA goedkeuring, beskikbaar is vir kommentaar oor 'n tydperk van 30 dae, van **30 Augustus 2021** tot **30 September 2021**. Daarbenewens sal 'n vergadering gehou word van 15h00 tot 18h00 op **1 September 2021** by die Mier Tourism, Kalahari Information Centre & Tented Camp, in ooreenstemming met die relevante COVID-19 voorskrifte.

Die doel van die openbare oorsigtydperk is vir B&GP's om kwessies van kommer te identifiseer en kommentaar te lewer op die aansoek en die voorlopige basiese assessering verslag. Na aanleiding van die kommentaartydperk sal die basiese assessering verslag by die Departement van Bosbou, Visserye en Omgewingsake (die bevoegde owerheid) ingedien word en 'n besluit oor die aansoek sal geneem word. Gedrukte afskrifte van die Draft BAR is beskikbaar by die onderstaande openbare plekke.

Name of Public Place	Address
Mier Tourism, Kalahari Information Centre & Tented Camp	Namibiaway, Rietfontein, DKLM, Northern Cape
SAPS Rietfontein	Loubos Rd, Rietfontein, 8811
Golder Associates Africa	Maxwell Office Park, Magwa Crescent West, Waterfall City, Midrand

Elektroniese afskrifte van die basiese assessering verslag sal beskikbaar wees op aanvraag by die Golder Openbare Deelname Kantoor (kontakbesonderhede hieronder) of aanlyn op die Golder webwerf: <https://www.golder.com/global-locations/africa/south-africa-public-documents/>

## Jou kommentaar is belangrik

B&GP's word uitgenooi om te registreer en skriftelike kommentaar oor bogenoemde aansoek te lewer. B&GP's kan kommentaar lewer op die aansoek op enige van die volgende maniere aan Golder:

- Deur die aangehegde Registrasie- en Kommentaarblad te voltooi wat by hierdie AID ingesluit is;
- Deur 'n brief te skryf of bykomende skriftelike voorleggings te verskaf; en
- Per e-pos, faks of telefoon na die Golder Publieke Deelname Kantoor.

## VIR MEER INLIGTING, KONTAK ASSEBLIEF:

Openbare Deelname Office Golder Associates Africa (Edms) Bpk

Posbus 6001, Halway House, 1685

Tel: (011) 254 4800; Faks: (086) 582 1561

E-pos: [PPoffice@golder.co.za](mailto:PPoffice@golder.co.za)



Ingevolge die Wet op die Beskerming van Persoonlike Inligting (POPIA) sal persoonlike inligting wat deur B&GP's verskaf word, eksklusief gebruik word vir hierdie projek en slegs met die betrokke Owerhede gedeel word volgens die regulatoriese riglyne en sal dit nie sonder toestemming gedeel word nie.