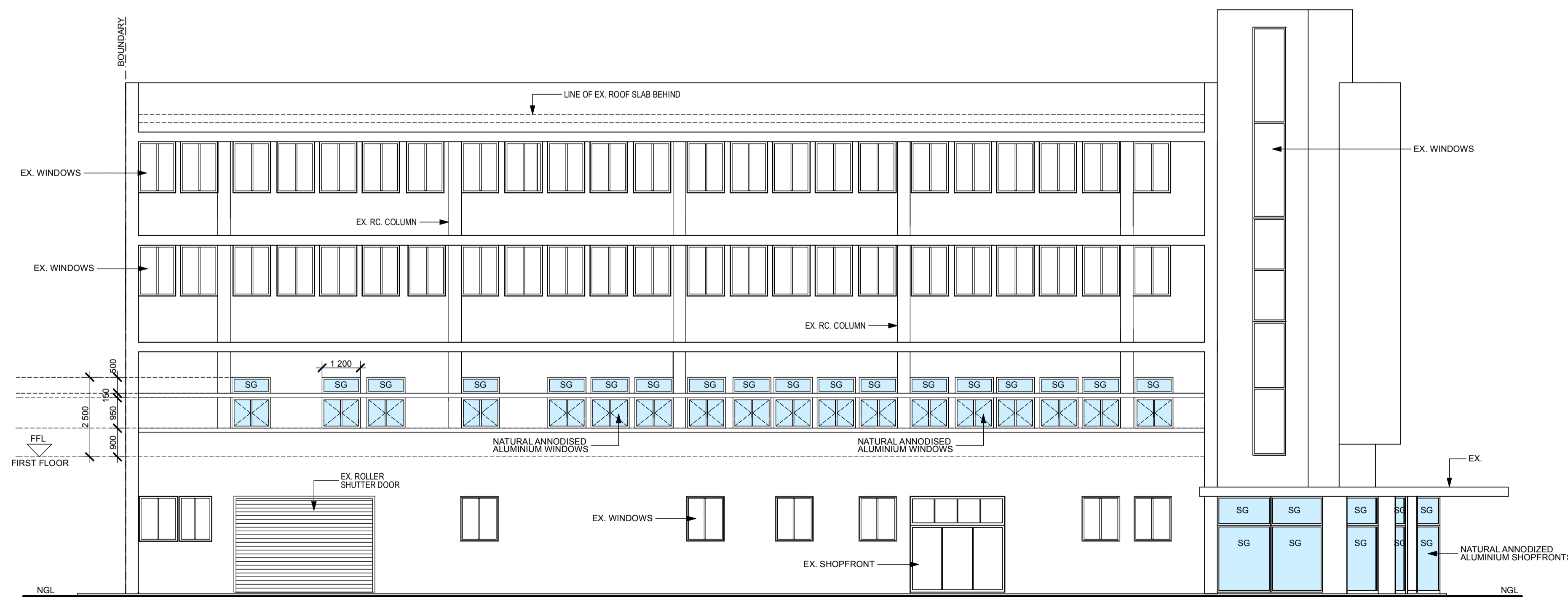




SOUTH ELEVATION - 1:100



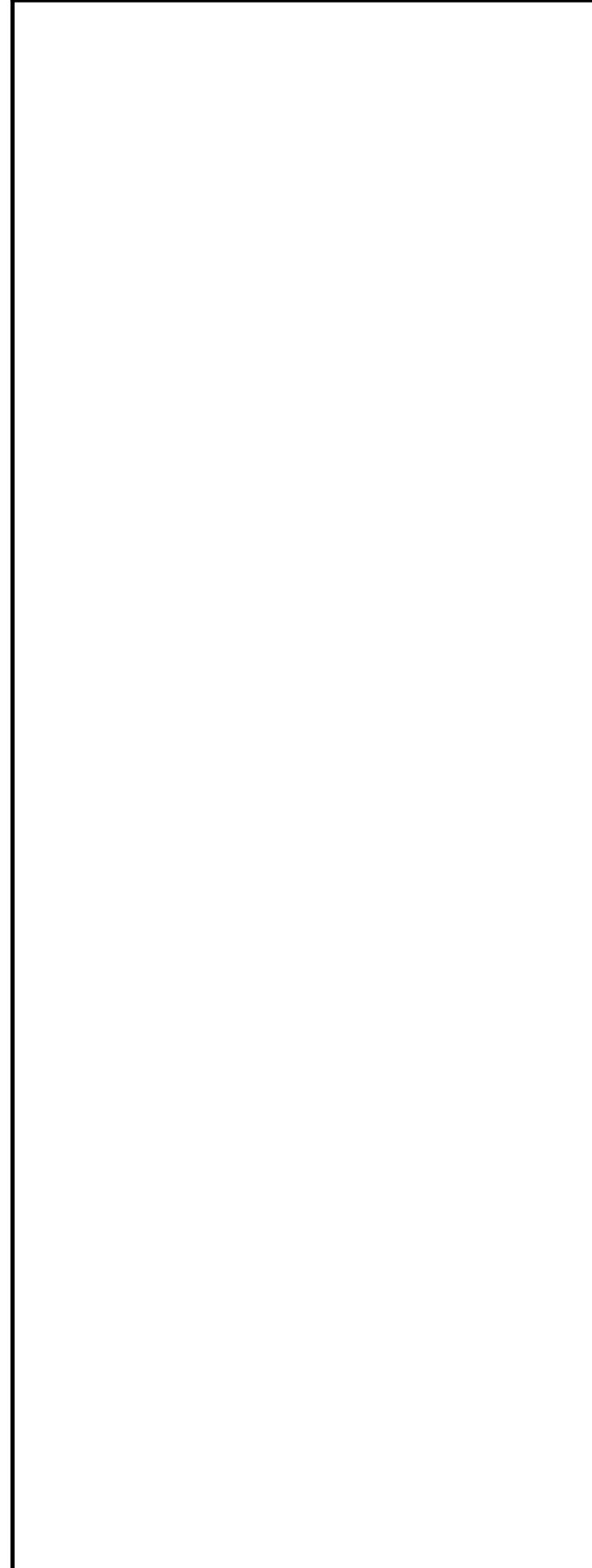
WEST ELEVATION - 1:100

WINDOW SCHEDULE					
NO.	WINDOW	PANE SIZE	THICKNESS	GLASS	FRAME
W1 - W18		0.60 SQM	4mm	TOUGHENED SAFETY GLASS	NATURAL ANODIZED ALUMINIUM
W19 W21 W25 W26 W29 W33		0.54 SQM	4mm	TOUGHENED SAFETY GLASS	NATURAL ANODIZED ALUMINIUM
W20		0.51 SQM	4mm	TOUGHENED SAFETY GLASS	NATURAL ANODIZED ALUMINIUM
W22 W23 W30		0.51 SQM	4mm	TOUGHENED SAFETY GLASS	NATURAL ANODIZED ALUMINIUM
W24 W27 W28		0.51 SQM	4mm	TOUGHENED SAFETY GLASS	NATURAL ANODIZED ALUMINIUM
W31 W32		0.54 SQM	4mm	TOUGHENED SAFETY GLASS	NATURAL ANODIZED ALUMINIUM
W34		0.90 SQM	4mm	TOUGHENED SAFETY GLASS	NATURAL ANODIZED ALUMINIUM
W35		1.50 SQM	4mm	TOUGHENED SAFETY GLASS	NATURAL ANODIZED ALUMINIUM
W36 W39		3.75 SQM	6mm	TOUGHENED SAFETY GLASS	NATURAL ANODIZED ALUMINIUM
W37		1.89 SQM	4mm	TOUGHENED SAFETY GLASS	NATURAL ANODIZED ALUMINIUM
W38 W40		1.68 SQM	4mm	TOUGHENED SAFETY GLASS	NATURAL ANODIZED ALUMINIUM
W41		2.43 SQM	5mm	TOUGHENED SAFETY GLASS	NATURAL ANODIZED ALUMINIUM
W42		3.40 SQM	6mm	TOUGHENED SAFETY GLASS	NATURAL ANODIZED ALUMINIUM
W43		2.40 SQM	5mm	TOUGHENED SAFETY GLASS	NATURAL ANODIZED ALUMINIUM

- GENERAL NOTES**
- CHECK ALL DIMENSIONS ON SITE.
 - FIGURED DIMENSIONS TO BE USED IN PREFERENCE TO SCALED DIMENSIONS.
 - NOTIFY ARCHITECT OF ANY DISCREPANCIES BEFORE COMMENCING BUILDING OPERATIONS.
 - ALL LEVELS MUST BE SET AND CONFIRMED WITH THE ARCHITECT ON SITE BEFORE CONSTRUCTION COMMENCES.
 - ALL WORKMANSHIP AND MATERIALS TO COMPLY WITH THE NATIONAL BUILDING REGULATIONS.
 - TWO COURSES OF BRICKWORK REINFORCED BRICKWORK AT BOTH WINDOW CILL AND WALL PLATE LEVELS.
 - ALL BANKS TO BE MAXIMUM 25 DEGREES.
 - SAFETY GLASS WHERE REQUIRED TO NBR.
 - SEWER AND STORMWATER CONNECTION POINTS TO BE CONFIRMED ON SITE PRIOR TO THE LAYING OF ANY PIPEWORK.
 - ALL NEW ROOFSLABS, FLOORSLABS, COLUMNS, BEAMS AND RETAINING WALLS TO STRUCTURAL ENGINEERS DETAILS AND SPECIFICATION.
 - STRUCTURAL ENGINEER TO VERIFY STORMWATER DISPOSAL ON ROOF AND ON GROUND LEVEL.

REVISIONS

DATE	NO.	REVISION



SHIRISH SUKHLAL - PR. ARCHITECT
REG NOS. - 7239(SACAP) - 7350(SAIA) - 470(KZNA)

OWNER'S SIGNATURE

PROJECT TITLE
14 PINE STREET DURBAN (PTY) LTD
PROPOSED NEW ROOMS FOR BAYSIDE HOTEL GROUP OF ERF 11193 AND ERF 11194, DURBAN ON MONTY NAICKER ROAD

DRAWING TITLE
WORKING DRAWINGS

PROJECT No.	DRAWING No.
S4/33	03/04
SCALE	DATE
1:100	DEC. 2013
DESIGNED/DRAWN	
	S. SUKHLAL / U. MADURAY

124 KARANTH'S AVENUE
DURBAN, KWAZULU NATAL
SOUTH AFRICA
TEL: (031) 2822885
CELL: 082 466 1377
FAX: 031 2822877
WWW.S4ARCHITECTS.CO.ZA

PRINT A1 SIZE