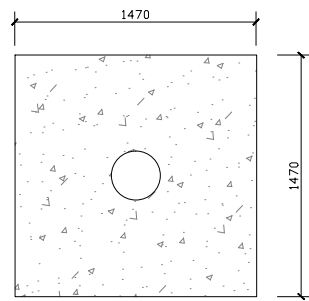
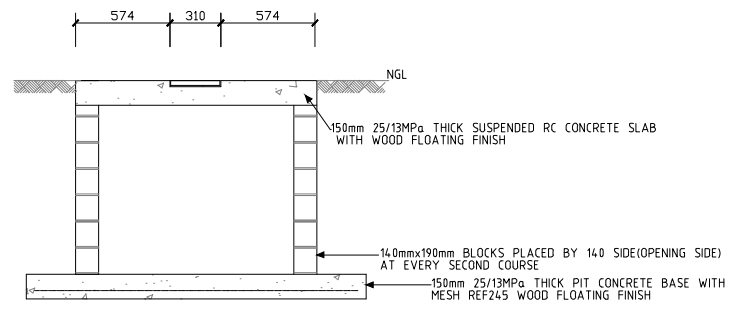


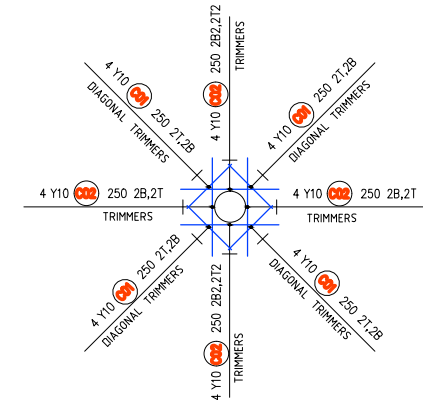
3D VIEW
SCALE NTS



PLAN VIEW
SCALE NTS



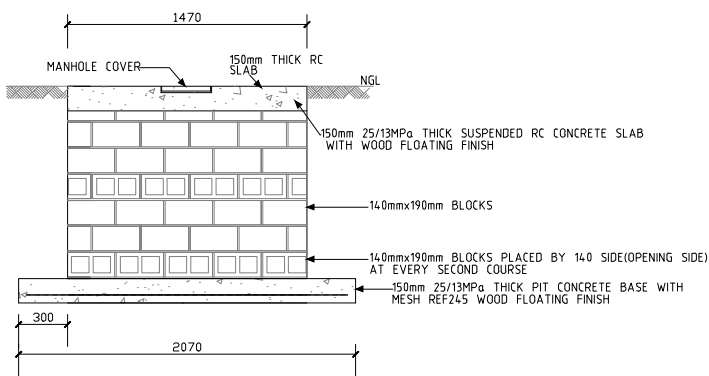
SECTION
SCALE NTS



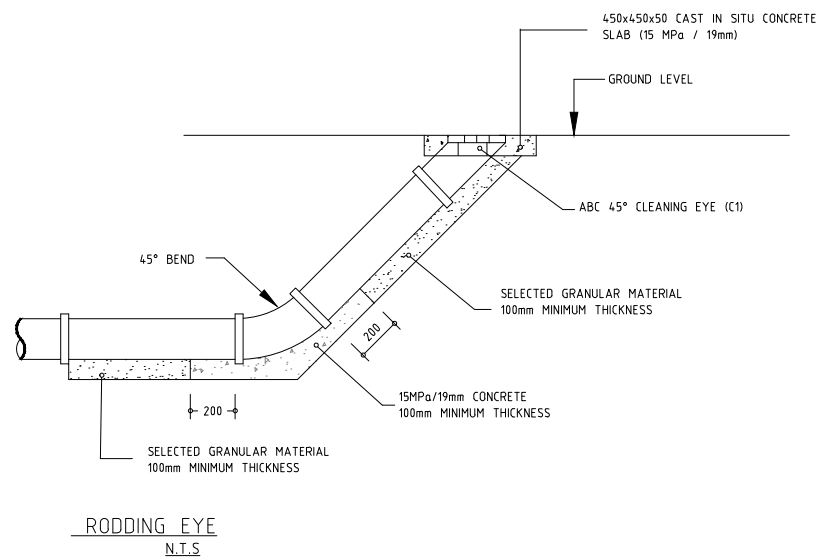
VOID DETAIL

- NOTES:**
1. ALL PIPES TO BE 150mm SANS 101 4.0MPa PVCu.
 2. ALL WORK TO BE PERFORMED IN ACCORDANCE WITH SANSDO.
 3. MANHOLE COVERS TO BE 150mm ABOVE GROUND LEVEL AND TO BE PRECAST SLABS.
 4. HEIGHT 'H' TO BE ADJUSTED BEFORE CONSTRUCTION OF THE MANHOLE ENSURE COVER AT CORRECT LEVEL.
 5. NO MANHOLE IS TO BE BACKFILLED UNTIL PERMISSION TO DO SO IS GIVEN BY THE ENGINEER.
 6. ALL CONCRETE TO BASE & ENCASMENT TO BE 20MPa CAST BETWEEN SHEET STEEL FORMS AND VIBRATED. 19mm RECOMMENDED MAXIMUM SIZE OF STONE OUTSIDE SURFACE OF PIPES PASSING THROUGH WALLS TO BE ROUGHENED & BITUMEN COATING IN OUTSIDE OF ASBESTOS CEMENT PIPES TO BE REMOVED IF APPLICABLE TO PREVENT INFILTRATION OF WATER TO MANHOLE.
 7. EXCEPT ON CONCRETE ENCASED SECTIONS, PIPE EXTENDING THROUGH MANHOLE WALL TO BE 0.5m LONG PIPE CONNECTED TO THIS TO BE 1.0m LONG WITH FLEXIBLE JOINTS AT EITHER END.
 8. ALL PRECAST CONCRETE ELEMENTS SHALL COMPLY WITH REQUIREMENTS OF SANS 1294 & MANUFACTURED FROM CONCRETE USING DOLOMITE AGGREGATE.
 9. SEWERS TO BE LAID 1.5m PARALLEL FROM THE ERP BOUNDARY.

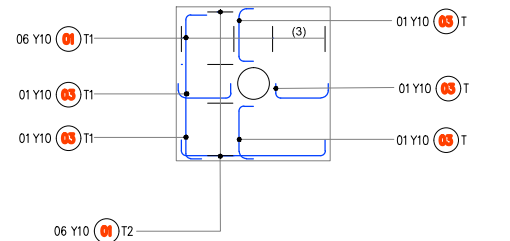
LEGEND:



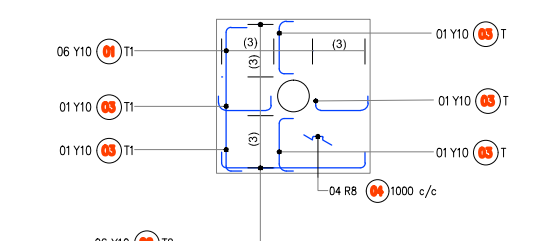
ELEVATION
SCALE NTS



RODDING EYE
N.T.S



SUSPENDED SLAB TOP REINFORCEMENT LAYOUT
SCALE NTS



SUSPENDED SLAB BOTTOM REINFORCEMENT LAYOUT
SCALE NTS

PRELIMINARY DRAWING			
REVISIONS			
No	Date	Details	Chg Assd

Client

13 SUFFOLK STREET,
PORT ELIZABETH, 6001
PRETORIA, 0057

Consultant

GILGAL CONSULTANTS
13 SUFFOLK STREET,
PORT ELIZABETH, 6001
PRETORIA, 0057
Tel: (041) 582 2108/7139
Fax: (041) 582 2584

Project

SEAVIEW CIVIL ENGINEERING SERVICES

Description

LEACHPIT DETAILS

Consultant Signature Pr. No. 201070260

Drawn by	Designed by	Approved by
A.K. MHLANA	Z. NYILA	M.J. NYILA
Scale	Date	
1:2500	05/12/2016	
Project No.	Description	Stage
J201508	w/w	P