

PROPOSED HARVARD 2 SOLAR PV FACILITY, REMAINDER OF PORTION 5 OF FARM SPES BONA NO. 2355, BLOEMFONTEIN



SITE CO-ORDINATES:
(Approximate centre point)

29° 07' 45.00" S,
26° 05' 58.00" E.

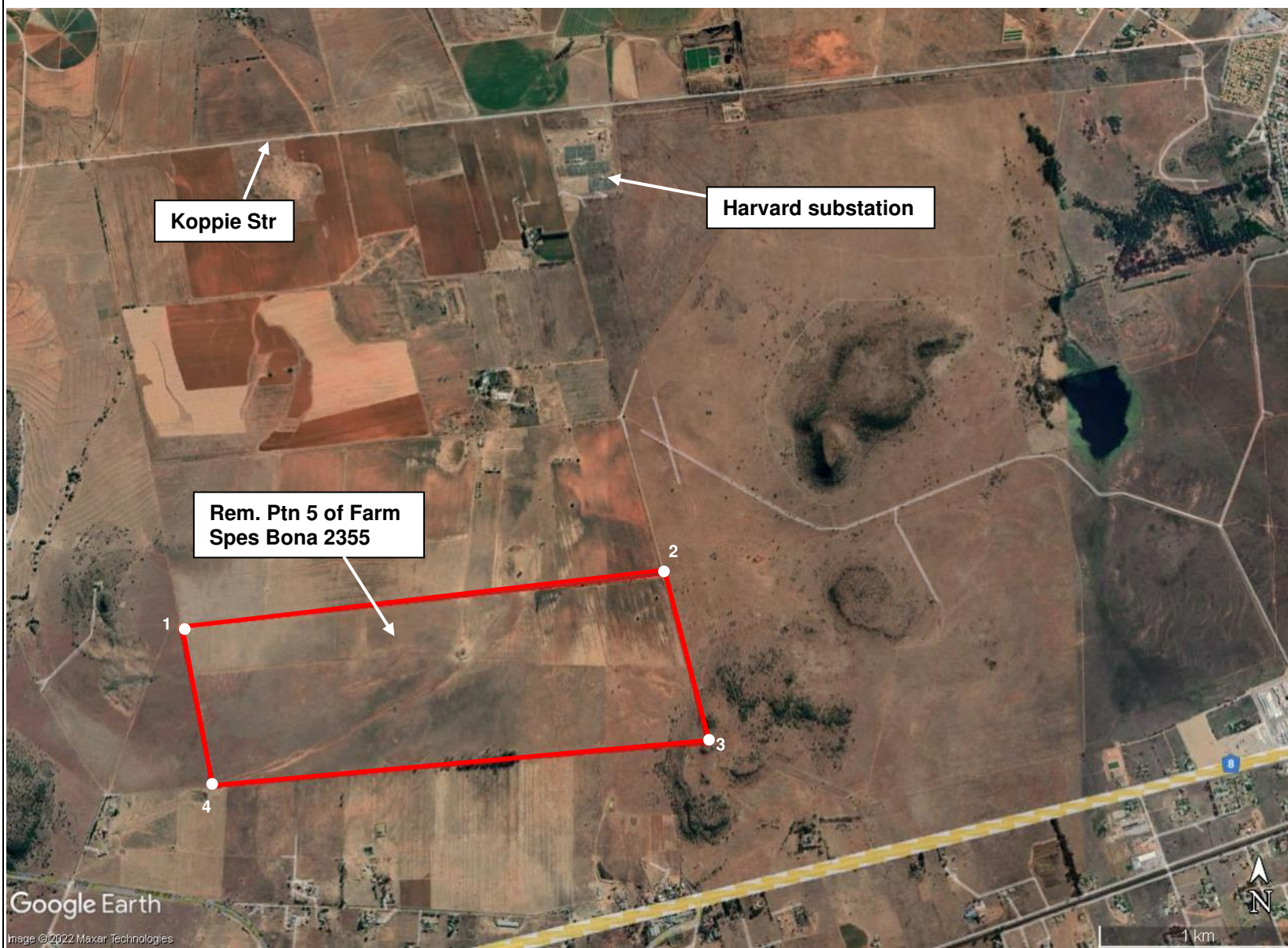
 **PROPOSED SITE**

DFFE REF:
TBC

ENVIROAFRICA REF:
0546
May 2022



PROPOSED HARVARD 2 SOLAR PV FACILITY, REMAINDER OF PORTION 5 OF FARM SPES BONA NO. 2355, BLOEMFONTEIN



SITE CO-ORDINATES:

Point 1: 29° 07' 36.00" S,
26° 05' 06.30" E.

Point 2: 29° 07' 27.40" S,
26° 06' 38.50" E.

Point 3: 29° 07' 55.00" S,
26° 06' 47.00" E.

Point 4: 29° 08' 02.00" S,
26° 05' 13.30" E.

 PROPOSED
HARVARD 2 SOLAR
PV FACILITY

DFFE REF:
TBC

ENVIROAFRICA REF:
0546

May 2022

