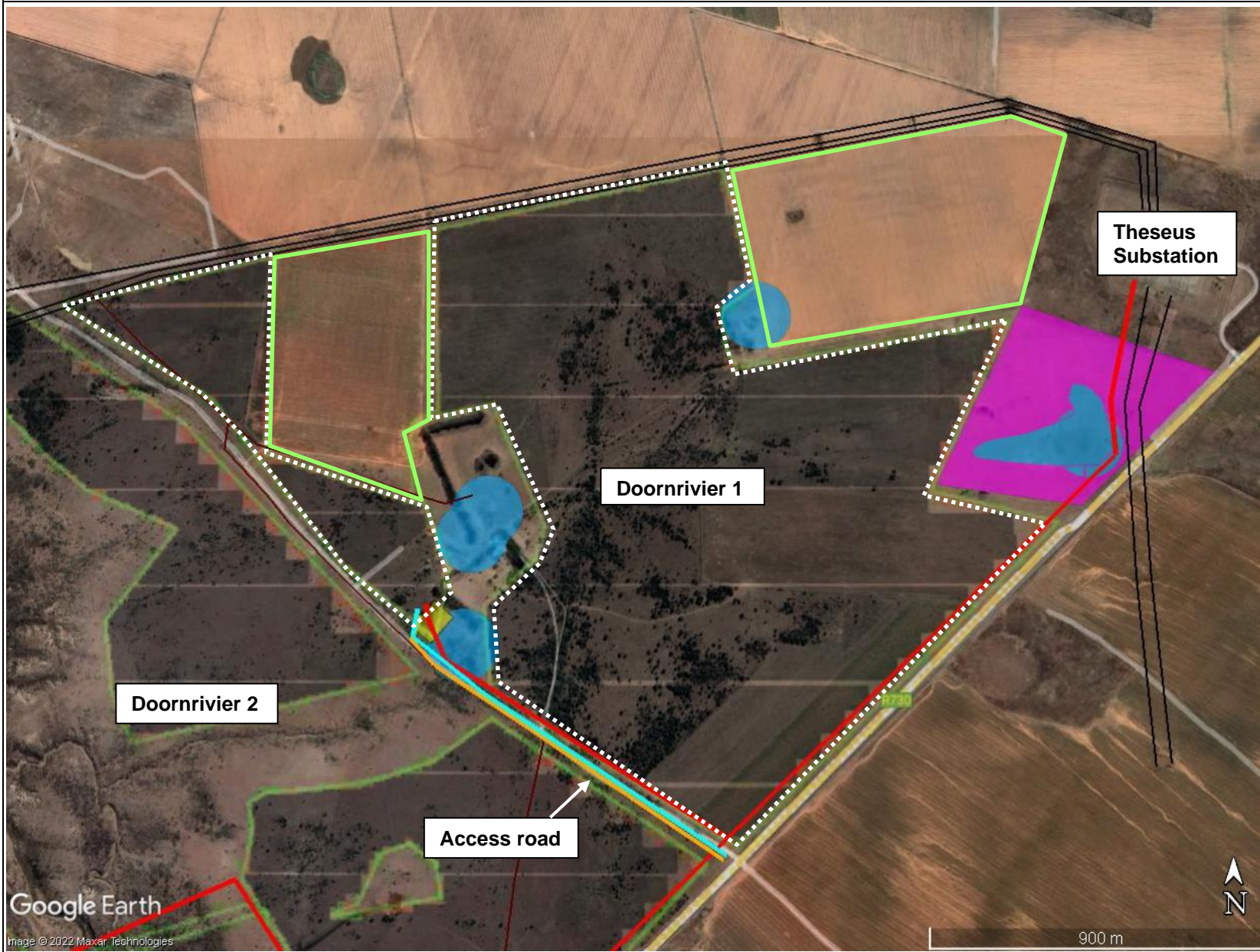







# PROPOSED DOORNRIVIER 1 SOLAR PV FACILITY AND GRID CONNECTION, PORTION 21 OF FARM DOORN RIVER NO. 330, VIRGINIA






## DEVELOPMENT AREAS

-  Solar Panels – Doornrivier 1 Solar
-  Switching station
-  Access road
-  Overhead Grid Connection
-  Water pipeline

## EXISTING INFRASTRUCTURE

-  ESKOM Powerlines

## IDENTIFIED NO-GO AREAS

-  Sensitive Areas
-  Agricultural land
-  Water points and pans

