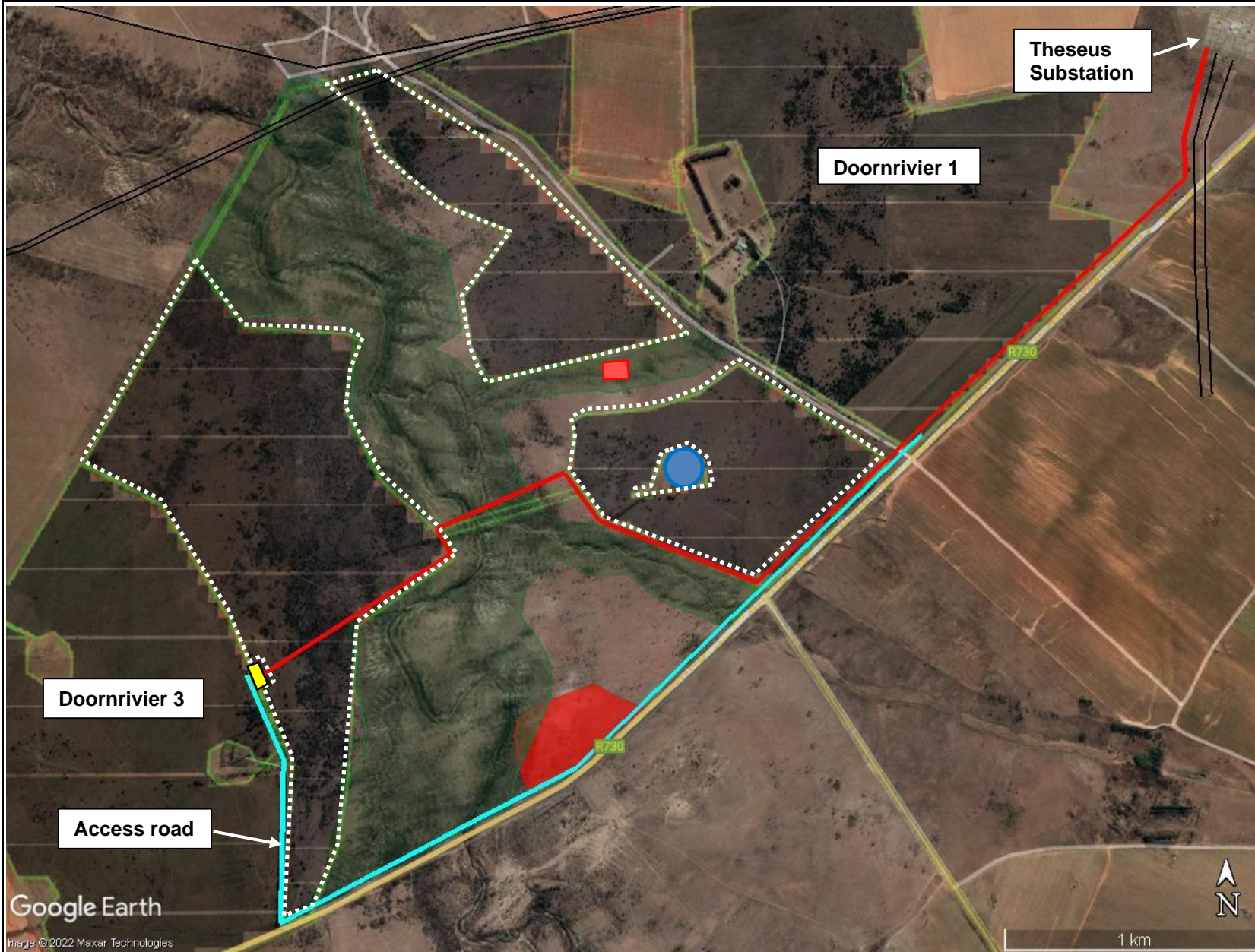







PROPOSED DOORNRIVIER 2 SOLAR PV FACILITY AND GRID CONNECTION, PORTION 5 OF FARM DOORN RIVER NO. 330, VIRGINIA



DEVELOPMENT AREAS

-  Solar Panels – Doornrivier 2 Solar
-  Switching station
-  Access road
-  Overhead Grid Connection
-  Water pipeline

EXISTING INFRASTRUCTURE

-  ESKOM Powerlines

IDENTIFIED NO-GO AREAS

-  Heritage Areas
-  Riparian Zone
-  Water points



Google Earth

Image © 2022 Maxar Technologies

1 km



Environmental Management and Impact Assessment – Longwall Restroom Impact Assessment