



Prepared for:  
Nala Environmental Consulting Firm

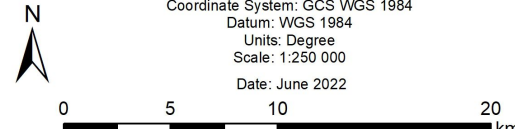
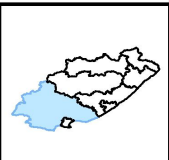


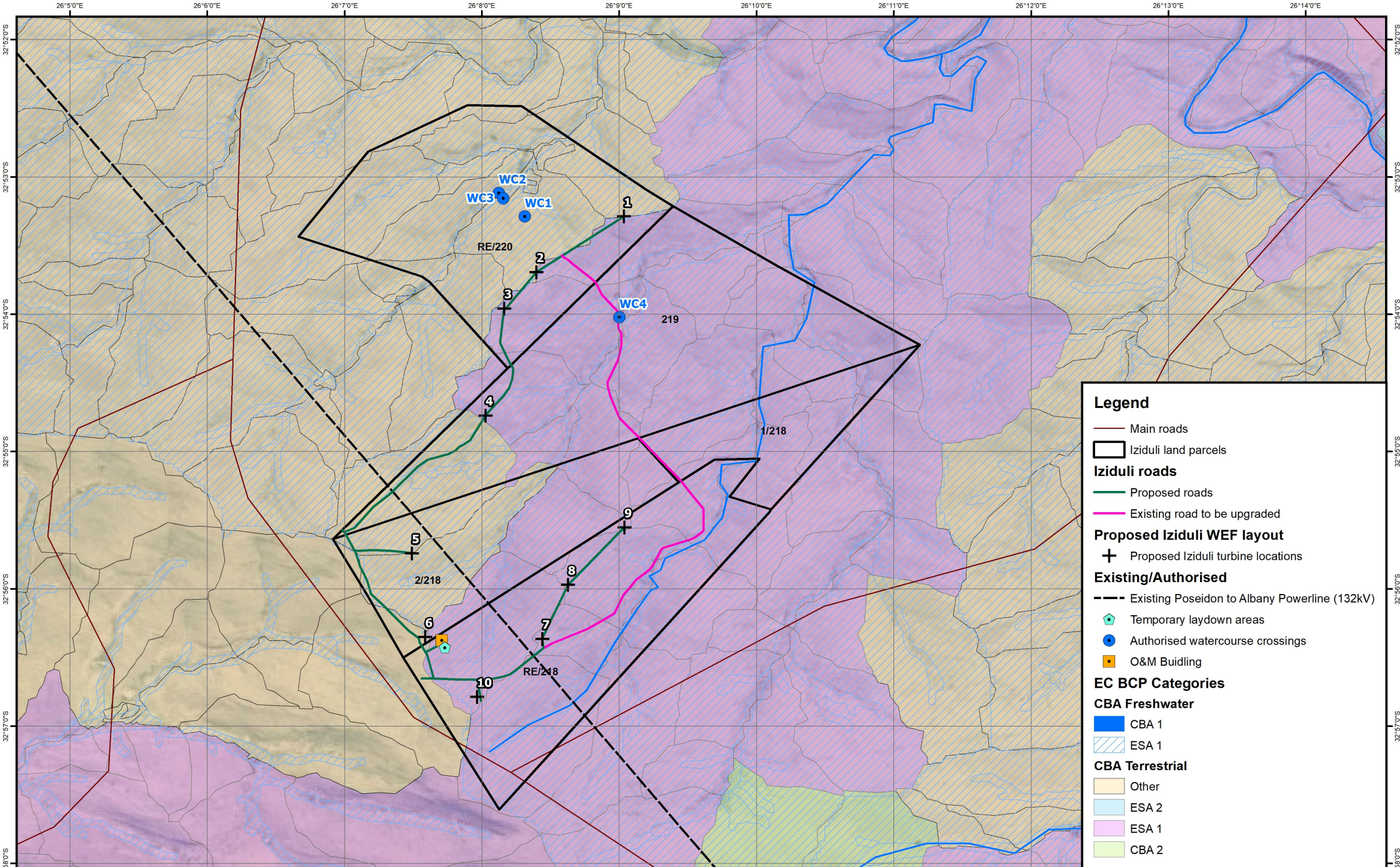
Prepared by:  
Ecofluence Consulting



**ENVIRONMENTAL IMPACT ASSESSMENT**  
Proposed Turbine localities associated with the  
Iziduli Wind Energy Facility  
Sarah Baartman District Municipality, Eastern Cape  
*Renewable Energy Development Zones Map*

Coordinate System: GCS WGS 1984  
Datum: WGS 1984  
Units: Degree  
Scale: 1:250 000  
Date: June 2022



**Legend**

- Main roads
- Iziduli land parcels
- Iziduli roads**
  - Proposed roads
  - Existing road to be upgraded
- Proposed Iziduli WEF layout**
  - Proposed Iziduli turbine locations
- Existing/Authorised**
  - Existing Poseidon to Albany Powerline (132kV)
  - Temporary laydown areas
  - Authorised watercourse crossings
  - O&M Building
- EC BCP Categories**
  - CBA Freshwater**
    - CBA 1
    - ESA 1
  - CBA Terrestrial**
    - Other
    - ESA 2
    - ESA 1
    - CBA 2



Prepared for:  
Nala Environmental Consulting Firm



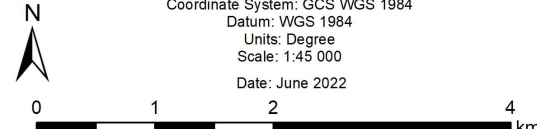
Prepared by:  
Ecofluence Consulting

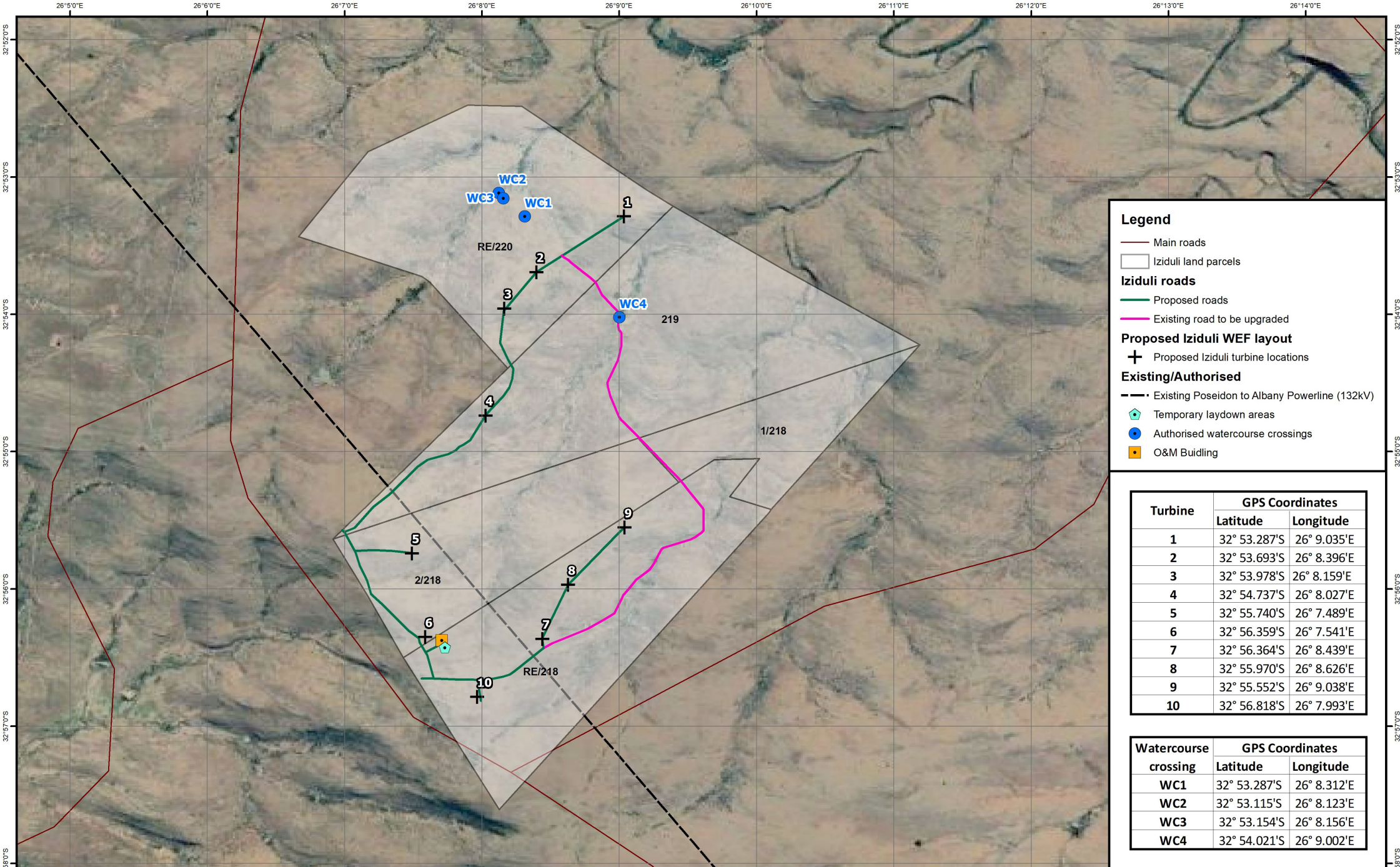


**ENVIRONMENTAL IMPACT ASSESSMENT**  
Proposed Turbine localities associated with the  
Iziduli Wind Energy Facility  
Sarah Baartman District Municipality, Eastern Cape

*Critical Biodiversity Areas Map*

Coordinate System: GCS WGS 1984  
Datum: WGS 1984  
Units: Degree  
Scale: 1:45 000  
Date: June 2022



**Legend**

- Main roads
- Iziduli land parcels
- Iziduli roads**
- Proposed roads
- Existing road to be upgraded
- Proposed Iziduli WEF layout**
- + Proposed Iziduli turbine locations
- Existing/Authorised**
- - - Existing Poseidon to Albany Powerline (132kV)
- ⬠ Temporary laydown areas
- Authorised watercourse crossings
- O&M Building

Turbine	GPS Coordinates	
	Latitude	Longitude
1	32° 53.287'S	26° 9.035'E
2	32° 53.693'S	26° 8.396'E
3	32° 53.978'S	26° 8.159'E
4	32° 54.737'S	26° 8.027'E
5	32° 55.740'S	26° 7.489'E
6	32° 56.359'S	26° 7.541'E
7	32° 56.364'S	26° 8.439'E
8	32° 55.970'S	26° 8.626'E
9	32° 55.552'S	26° 9.038'E
10	32° 56.818'S	26° 7.993'E

Watercourse crossing	GPS Coordinates	
	Latitude	Longitude
WC1	32° 53.287'S	26° 8.312'E
WC2	32° 53.115'S	26° 8.123'E
WC3	32° 53.154'S	26° 8.156'E
WC4	32° 54.021'S	26° 9.002'E



Prepared for:  
Nala Environmental Consulting Firm



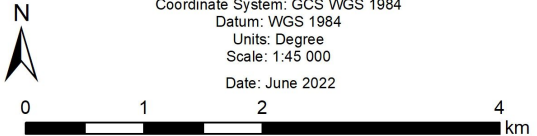
Prepared by:  
Ecofluence Consulting

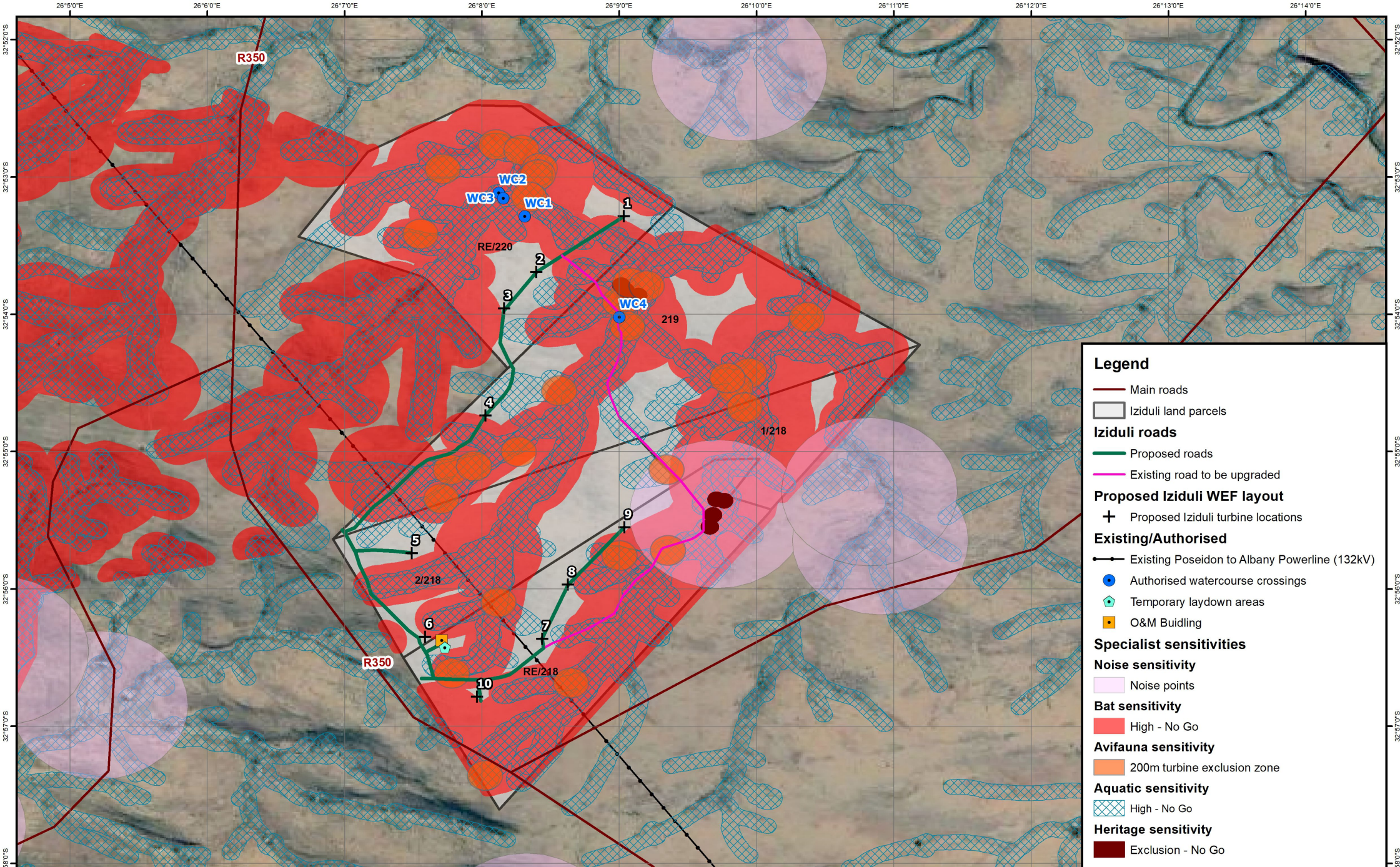


**ENVIRONMENTAL IMPACT ASSESSMENT**  
Proposed Turbine localities associated with the  
Iziduli Wind Energy Facility  
Sarah Baartman District Municipality, Eastern Cape

*Final Layout Map*

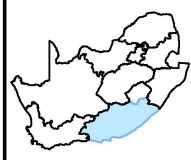
Coordinate System: GCS WGS 1984  
Datum: WGS 1984  
Units: Degree  
Scale: 1:45 000  
Date: June 2022



**Legend**

- Main roads
- Iziduli land parcels
- Iziduli roads**
  - Proposed roads
  - Existing road to be upgraded
- Proposed Iziduli WEF layout**
  - Proposed Iziduli turbine locations
- Existing/Authorised**
  - Existing Poseidon to Albany Powerline (132kV)
  - Authorised watercourse crossings
  - Temporary laydown areas
  - O&M Building
- Specialist sensitivities**
  - Noise sensitivity**
    - Noise points
  - Bat sensitivity**
    - High - No Go
  - Avifauna sensitivity**
    - 200m turbine exclusion zone
  - Aquatic sensitivity**
    - High - No Go
  - Heritage sensitivity**
    - Exclusion - No Go



Prepared for:  
Nala Environmental Consulting Firm

Prepared by:  
Ecofluence Consulting

**ENVIRONMENTAL IMPACT ASSESSMENT**  
Proposed Turbine localities associated with the  
Iziduli Wind Energy Facility  
Sarah Baartman District Municipality, Eastern Cape

*Final sensitivity map*

Coordinate System: GCS WGS 1984  
Datum: WGS 1984  
Units: Degree  
Scale: 1:45 000  
Date: June 2022

