

APPENDIX A









LOCALITY MAPS

Kroonstad South PV
Cluster

Regional Locality:
Leeuwspruit Solar 2 PV

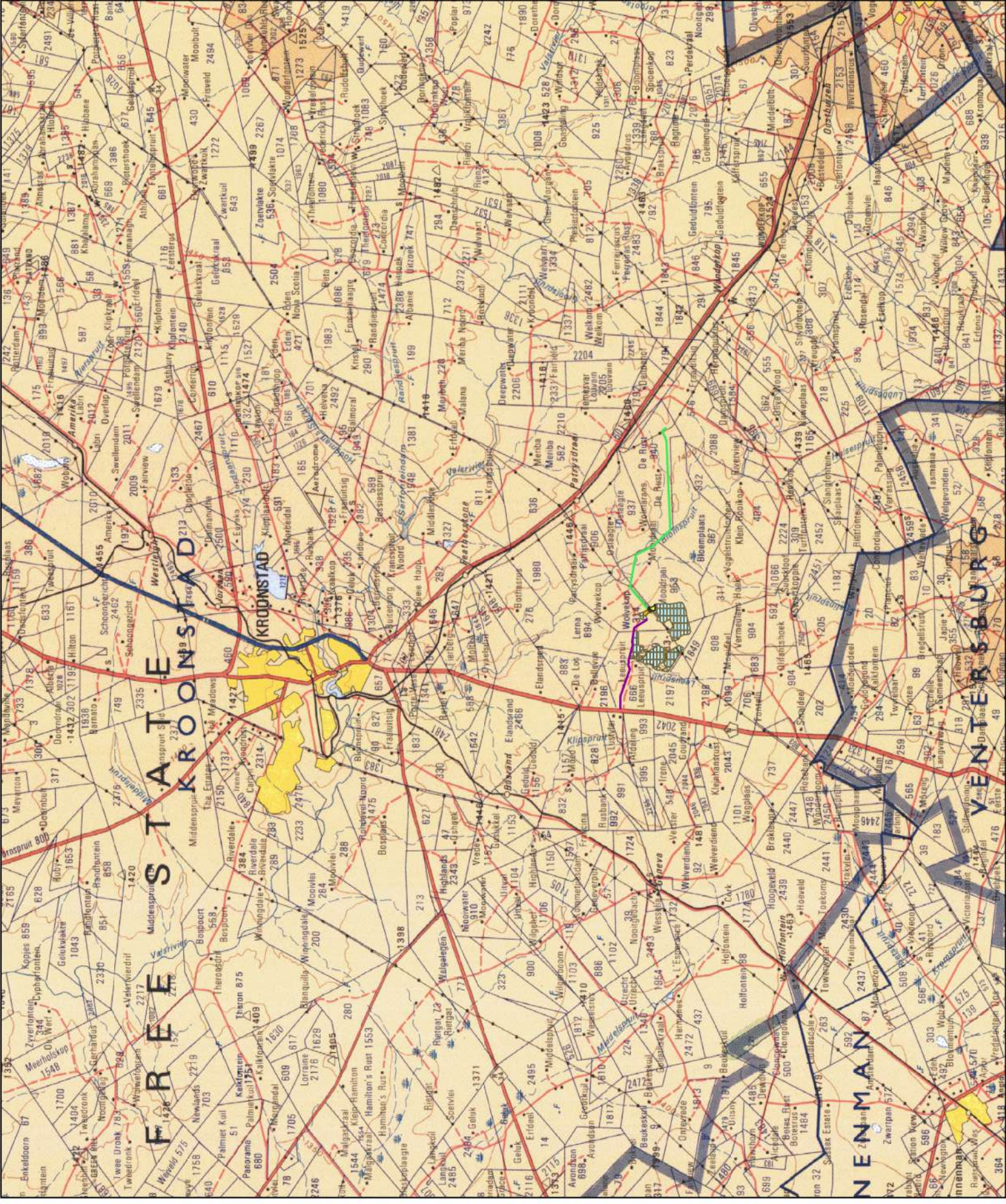
Legend

Leeuwspruit Solar 2 PV

-  Facility Substation
-  PV Array
-  Laydown
-  Buildings
-  BESS
-  50m wide Powerline Corridor
-  Internal Roads
-  Access Road











Scale: 1: 180 000

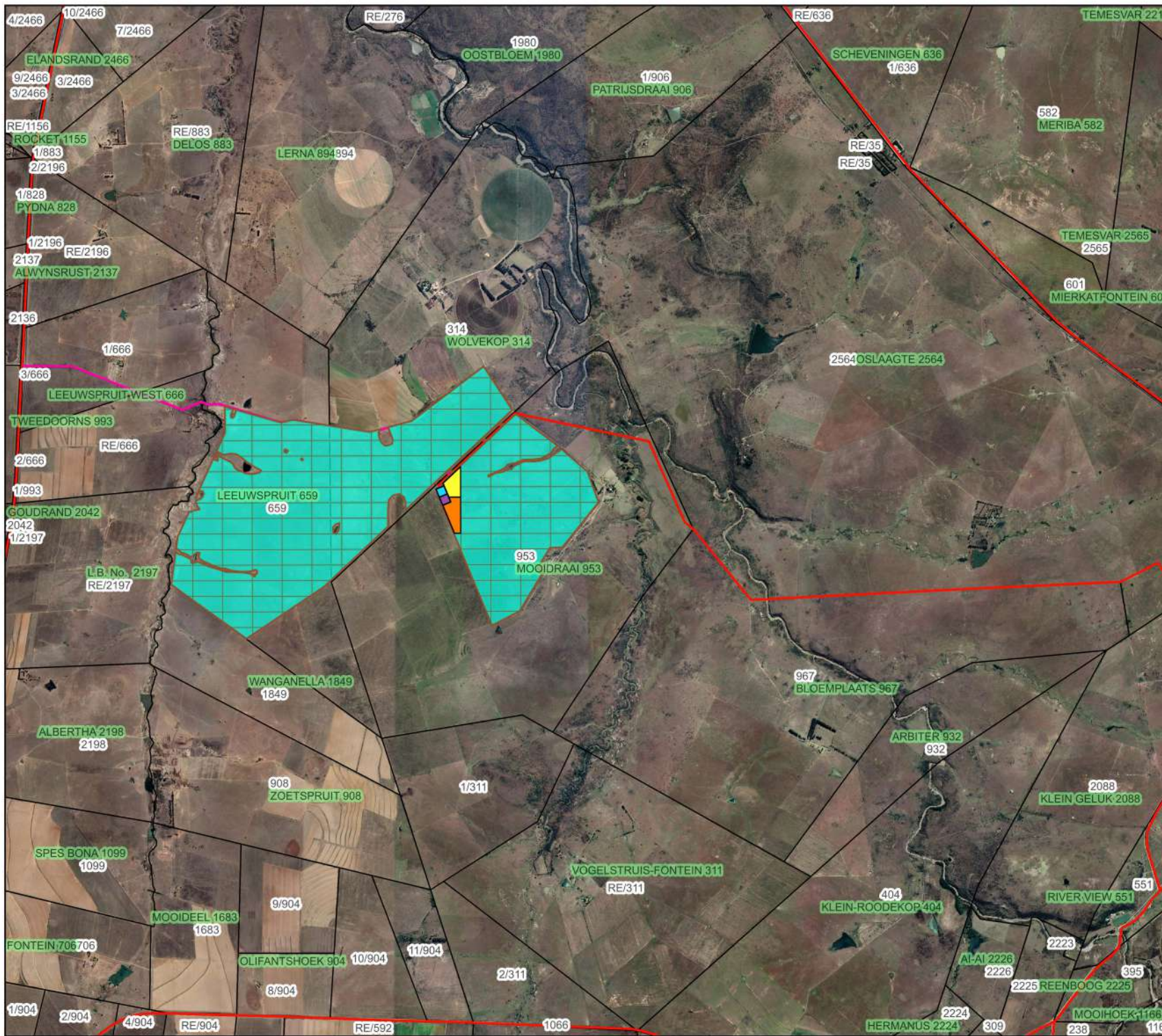
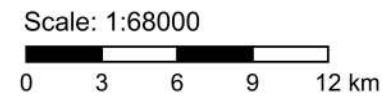


Layout:
Leeuwspruit Solar 2

Legend

KROONSTAD SOUTH PV CLUSTER: Leeuwspruit Solar 2

-  Facility Substation
-  PV Array
-  Laydown
-  Buildings
-  BESS
-  Internal Roads
-  Access Roads
-  132 kV OHL





Layout:
Leeuwspruit Solar 2

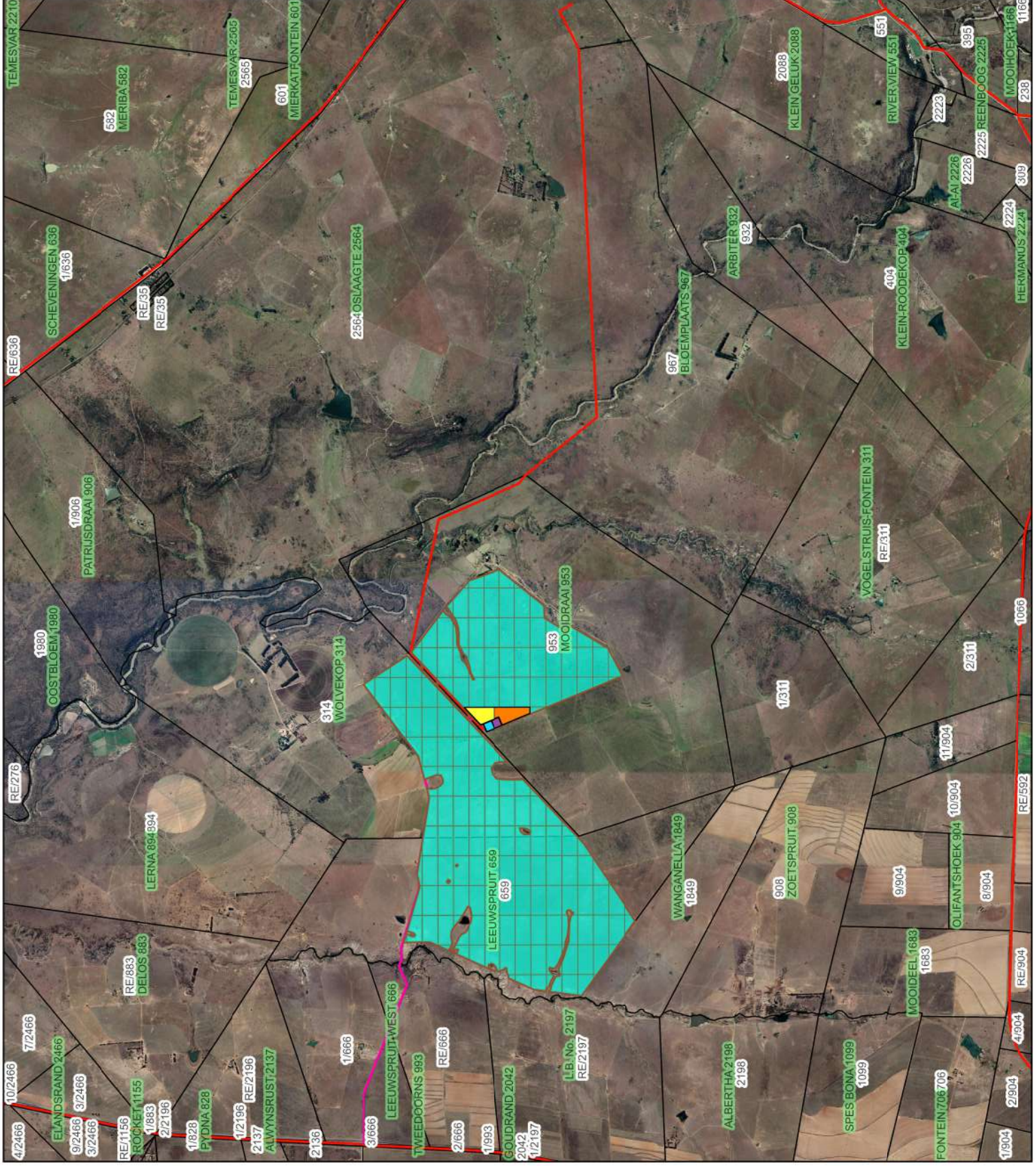
Legend

**KROONSTAD SOUTH PV
CLUSTER: Leeuwspruit Solar 2**












- Facility Substation
- PV Array
- Laydown
- Buildings
- BESS
- Internal Roads
- Access Roads
- 132 KV OHL

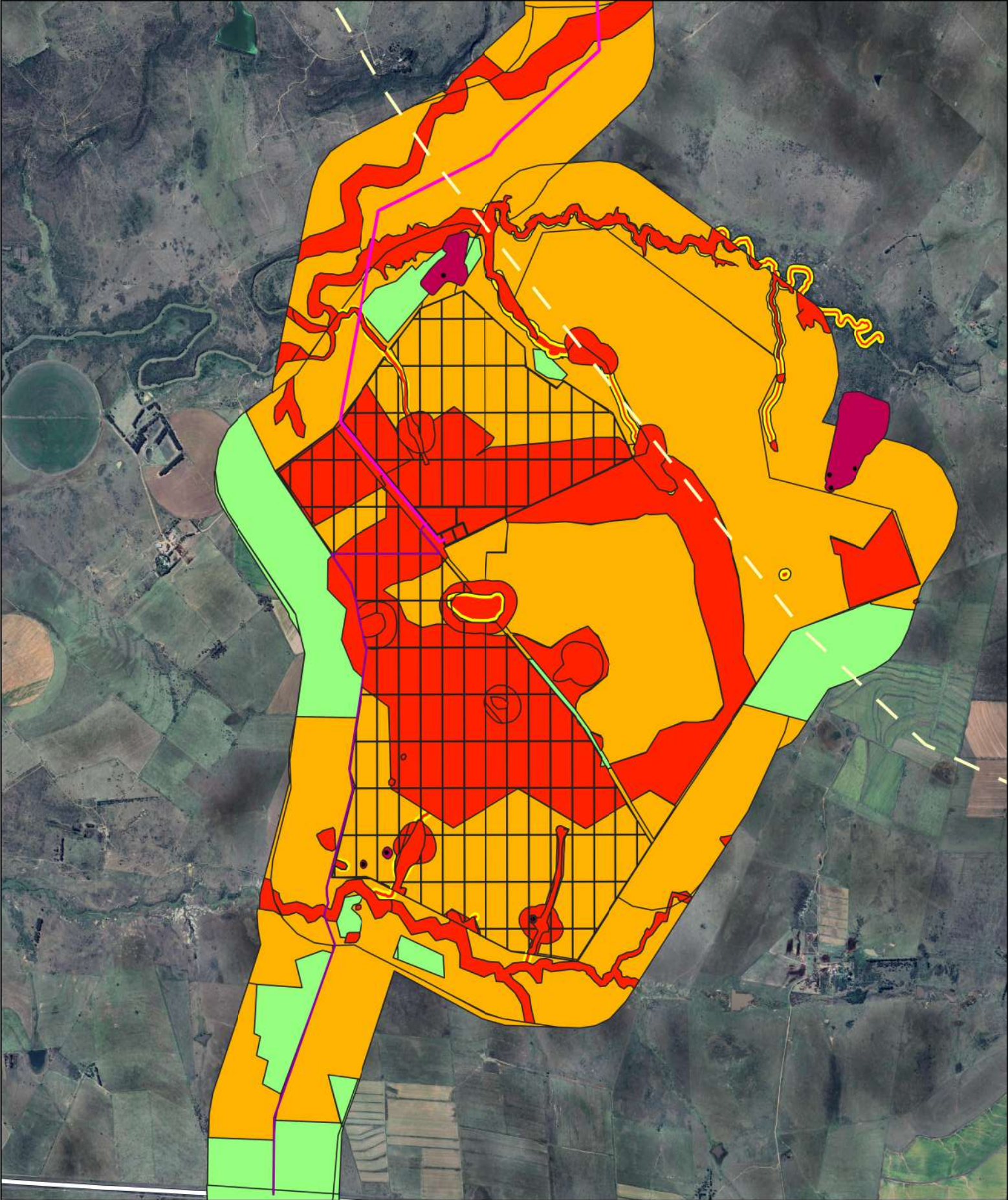


Scale: 1:68000



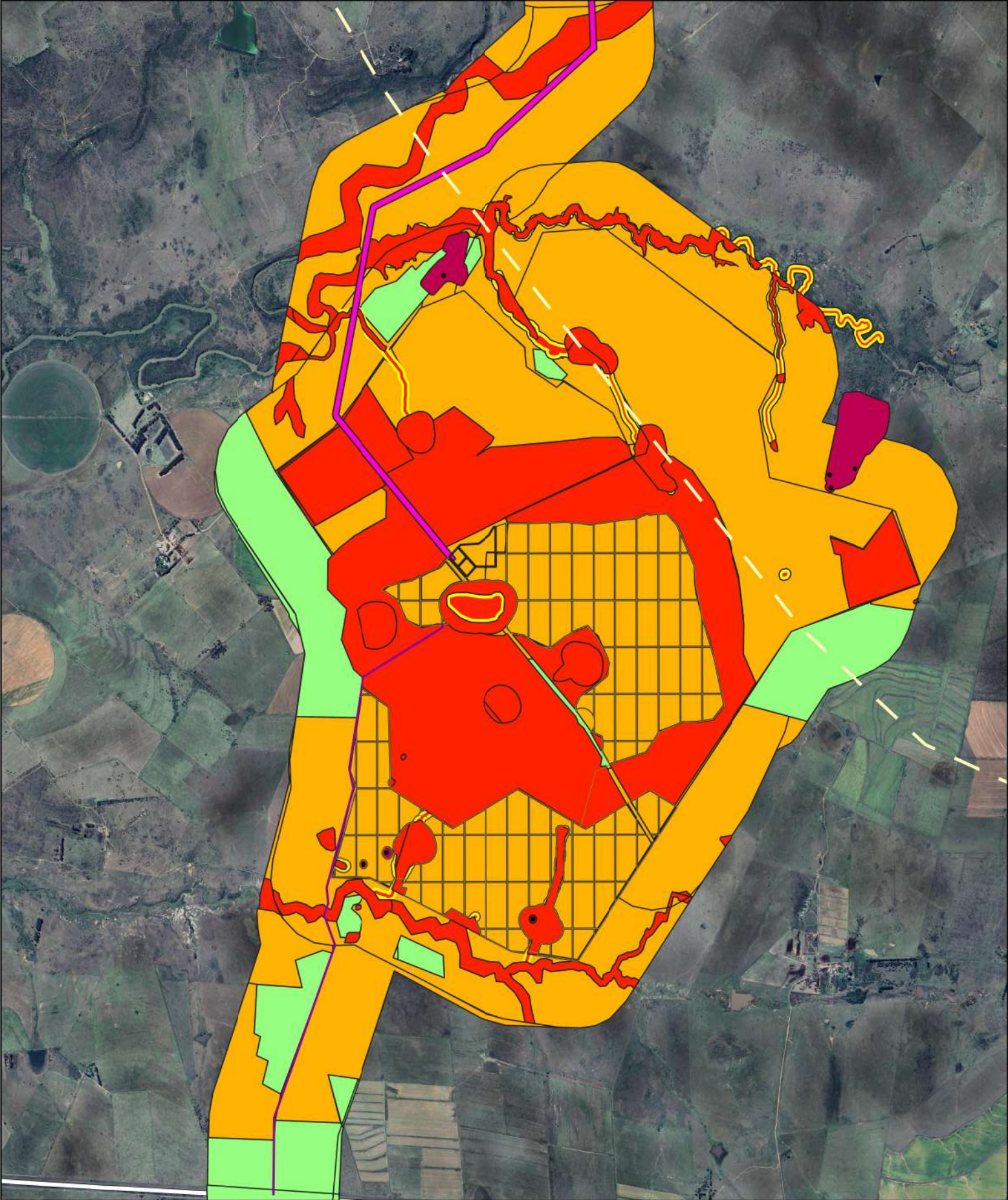
Legend

-  5 km Protected Area Buffer
- Combined Sensitivity**
-  High
-  Medium
-  Medium Sensitivity & 32 m Watercourse Buffer
-  Low
-  Heritage Features
-  Heritage Sensitivity (30 m Buffer)
- Leeuwspruit Solar 2 PV**
-  Access Road
-  PV Array
-  132 KV OHL
-  SA Roads


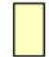



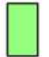




Legend

-  5 km Protected Area Buffer
- Combined Sensitivity**
-  High
-  Medium
-  Medium Sensitivity & 32 m Watercourse Buffer
-  Low
-  Heritage Features
-  Heritage Sensitivity (30 m Buffer)
- Leeuwspruit Solar 2 PV**
-  Access Road
-  PV Array
-  50m wide Powerline Corridor
-  SA Roads



Legend

-  5 km Protected Area Buffer
-  Serendipidie Private Game Reserve
- Combined Sensitivity**
-  High
-  Medium
-  Medium Sensitivity & 32 m Watercourse Buffer
-  Low
- Leeuwspruit Solar 2 PV**
-  50m wide Powerline Corridor
-  SA Roads



Scale: 1: 18 000
0 200 400 600 800 m

