

APPENDIX A: ATTACHMENTS AS PER DMR TEMPLATE

Appendix 1&2: CV of EAP & Summary of Past Experiences

GroenbergEnviro (Pty) Ltd
PO Box 1058,
Wellington,
7654

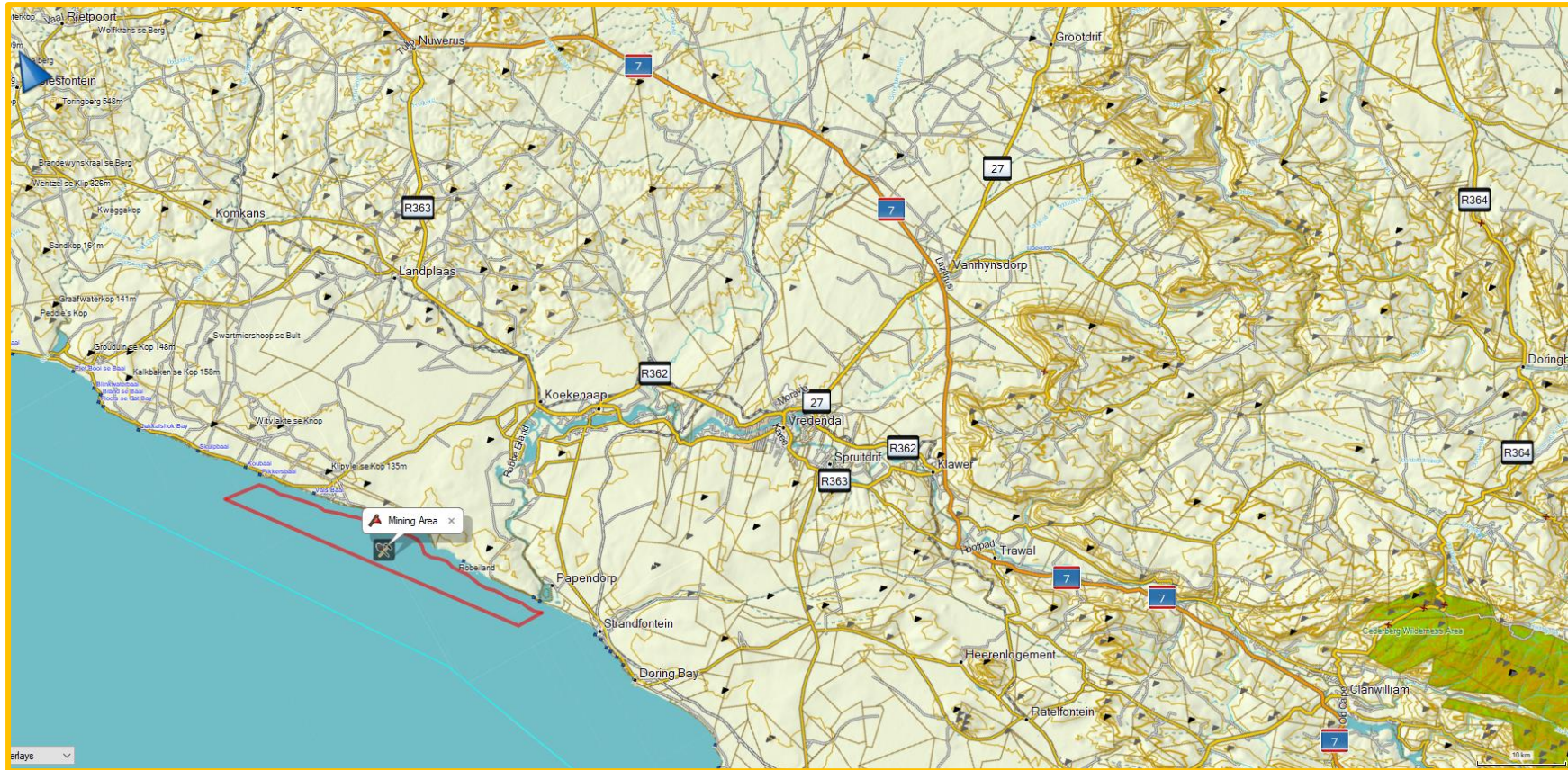
Cell: 0795090785
Fax: 0866721916
E-mail: helene@groenbergenviro.co.za

Helene Botha

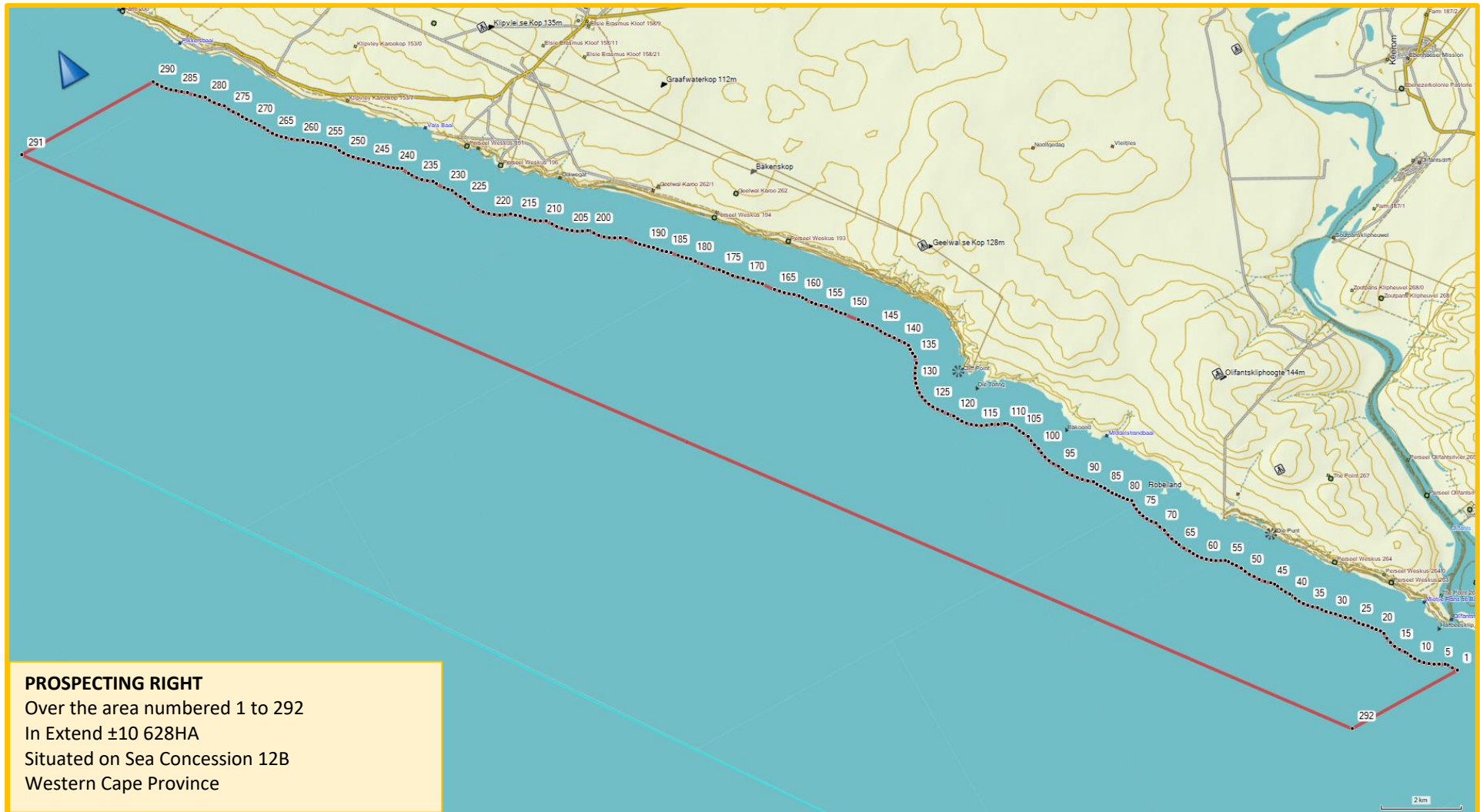
Nationality	South African		
Date of birth	12 November 1991		
Qualifications	B.Sc. Degree (Zoology) B Sc. Hons. (Zoology) Post Graduate Certificate in Education Masters Degree in Environmental Management	University of the Free State – Bloemfontein University of the Free State – Bloemfontein University of the Free State – Bloemfontein North West University – Potchefstroom	2012 2013 2014-2015 2016- 2019
Special courses	None additional to the above.		
Professional membership	Environmental Assessment Practitioners Association of South Africa – 2019/558 IAIAsa		
Career	2014 - present 2013	GroenbergEnviro (Pty) Ltd (previously Pieter Badenhorst Professional Services) - Wellington Research and teaching assistant – Department of Zoology and Entomology, UFS	
Current position	Environmental Consultant at GroenbergEnviro (Pty) Ltd. As a private consultant now provide consultancy services in Environmental Management, Public Participation and Project Management as well as Water Use Licenses.		
Professional experience	7 years' experience in environmental studies and management. This include producing various Basic Assessment, Section 24G Reports, Scoping and Environmental Impact Reports, Environmental Management Plans, Mining & Prospecting applications as well as Water Use Licenses for many developments.		
Publications/ Contracts	<p>Basic Assessment Reports</p> <ul style="list-style-type: none"> Agricultural expansion on Farm Vruchtbaar 248, Wellington Anysberg Nature Reserve Upgrades Expansion of Chicken Housing Facility for commercial egg laying, Portion 2 of Farm 54, Vlaminke Valey, Velddrif Expansion of Chicken Housing Facility for commercial egg laying, Portion 44 of Farm 209, George Glencairn Beach and Rail Way Remedial Measures Kouga Municipality 66kV powerline upgrade Loxtonia Bo-dam expansion on Portion 50 of Farm Stinkfontein 383 Moerasrivier Chickens Expansion Moerasrivier Chickens Free-range development Olifantsfontein Chicken Housing Facility Expansion Oranjevis Dieseltank Decommissioning and Installation Proposed Residential Development on a Portion of the Remainder of the Farm No. 757, Somerset West Proposed residential development on Erf 4722, Wellington Rietvallei Skema Weir on Portion 50 of Farm Stinkfontein 383 Simonstown Marina Expansion Small abattoir and feeding lots on Portion 1 of Farm 1348, Paarl Teerpad Dam Offstream Expansion Berg Dam Instream Expansion Erf 34, Diemersfontein Proposed Development and Operation of an Organic Compost Plant on the Remainder of the Farm Leeuw Rivier 240, Tulbagh <p>Scoping and Environmental Impact Reports</p> <ul style="list-style-type: none"> Groenkloof EIA Nonna Agricultural Scheme EIA Proposed Crematorium on Erf 11466, Wellington 	<p>Water Use Licenses Applications</p> <ul style="list-style-type: none"> Black Oystercatcher WULA & V&V Ginkel Venter Familie Trust WULA HFR Properties Cape WULA JP le Roux Property Trust WULA Lazena Poultry Abattoir WULA Leeurivier WULA & V&V Leeuwenkuil WULA Nabot WULA & V&V Saldanha Bay Municipality Boreholes WULA Uientjieskraal infrastructure WULA University of Stellenbosch Business School WULA Oudepont Boerdery Water Registration Rondomdraai & Helpmekaar WULA Sandrivier Landgoed Instream Dam WULA WULA for Portion 50 & 51, Farm Groote fontein 486 <p>De Hoop Nature Reserve General Authorisation as part of E.A.</p> <p>Maintenance Management Plans</p> <ul style="list-style-type: none"> Altima Northern Heights dam MMP Oudepont MMP (in progress) <p>Section 24G Reports</p> <ul style="list-style-type: none"> 24G Rectification Of Cultivation Of Farmland On Portion 7 Of Farm Stockenström Kop No 77, Norvalspont Babylonstoren S24G Basson Boerdery S24G Bonniebrook Dam S24G Colesberg Pivot Development Groenkloof S24G Holiday cottages on Portion 11 of Farm no.1380 Paarl Leeuwenkuil instream dam expansion S24G <p>Appeals</p> <ul style="list-style-type: none"> Appeal Against The Environmental Authorisation For The Residential Development On A Portion Of The Remainder Of Farm 757 And Farm 758, Somerset West Farm Bonniebrook No 933, Elim Road, Stanford - S24G fine appeal Farm Pietersvlei No 196, S24G fine appeal Appeal against Prospecting Right For Various Minerals In The Doring Prospecting Area (Doring 001 And 002) 	

<ul style="list-style-type: none"> Proposed dam construction on Portion 8 & 28 of Farm Theerivier 505, Clanwilliam District Proposed new instream dam on portion 6 of the Farm Remhoogte 222, Piketberg Terra Nominees Industrial Development The Mining Right Application on Farm Wolfberg 187 for Kasimira Trading 82 (Pty) Ltd, Nama Khoi Local Municipality, Namakwa District Municipality, Northern Cape (only EIAR) Prospecting Right and Bulk Sampling for Diamonds on Portion of Plot 516, Plot 678 and Plot 668 Port Nolloth, Richtersveld Local Municipality, Namakwa District Municipality, Northern Cape (only EIAR) <p>ECO</p> <ul style="list-style-type: none"> Klein Parys Residential Development ECO Newton Residential Development ECO Rietvlei abattoir, Portion 1 of Farm 1348, Paarl Pat Barnard - Hanglip <p>Checklists</p> <ul style="list-style-type: none"> Erf 71, Camps Bay Proposed diesel tank and kiosk on Erf 1969, Olifantshoek Graham Beck dams HFR Farm 1517 dams Proposed Construction of a Residential Home on Portion 3 of the Farm Klein Constantia No. 1121, Constantia, Western Cape Like For Like on Portion 1 of the farm Flamink Vlei 54, Bergrivier 	<ul style="list-style-type: none"> Removal Of Vegetation For The Establishment Of Blueberry Plantations On Portion 74 (A Portion Of Portion 8) Of The Farm Groenkloof 464 Jq, Mooinooi, S24G fine appeal Appeal against Sandrivier WULA decision <p>Amendments</p> <ul style="list-style-type: none"> Amendment Application of the Amended Environmental Authorisation for the construction of a residential development on Erf No. 26190, Paarl. Strand Seawall & Barts Corner Amendment <p>Other</p> <ul style="list-style-type: none"> Comments on the Okran 38 (Pty) Ltd: Proposed Life Cycles Park on Farm Corona RE/480, Paarl, Western Cape. Comments on Orren Capital (Pty) Ltd: MINING PERMIT APPLICATION ON FARM KLEINFONTEIN 367 RD Comments on Western Cape Mineral Lazena abattoir compliance correspondences
---	--

Appendix 3: Locality Map



Appendix 4: Site Plan & Coordinates



ID, Lat, Long

1, -31.71055571,18.18318121 2, -31.70955748,18.18240731 3, -31.70850434,18.1817892 4, -31.70808153,18.18133329
5, -31.7074029,18.18011157 6, -31.70686744,18.17905137 7, -31.70622453,18.17805838 8, -31.70549227,18.17715217
9, -31.70466812,18.17635912 10, -31.70377291,18.17569288 11, -31.70281981,18.17514171 12, -31.7018256,18.17474377
13, -31.70133892,18.17442889 14, -31.70028273,18.17361127 15, -31.69915006,18.17297282 16, -31.69796035,18.1725237
17, -31.69672781,18.17227137 18, -31.69547302,18.17221532 19, -31.69460529,18.17179955 20, -31.69388648,18.17105485
21, -31.69309875,18.1703902 22, -31.69227063,18.16978478 23, -31.69154253,18.16894401 24, -31.69075174,18.16819927
25, -31.68987696,18.16757573 26, -31.68895048,18.16707332 27, -31.68821907,18.16608741 28, -31.68737352,18.16519059
29, -31.68644908,18.16443709 30, -31.68573499,18.1635655 31, -31.68498221,18.16277779 32, -31.68414644,18.16206888
33, -31.68326967,18.16146297 34, -31.68257692,18.1605345 35, -31.6818028,18.1597 36, -31.68096053,18.15897971
37, -31.68005404,18.1583662 38, -31.6790911,18.15789179 39, -31.67808468,18.1575398 40, -31.67766643,18.15728268
41, -31.67677665,18.15660737 42, -31.6758119,18.15606468 43, -31.67481005,18.15565372 44, -31.67407808,18.1552783
45, -31.67341335,18.15462493 46, -31.67252705,18.15356623 47, -31.67151956,18.15264521 48, -31.67040362,18.15190825
49, -31.66946371,18.15119955 50, -31.66845349,18.15063079 51, -31.66740022,18.150205 52, -31.66633218,18.14951353
53, -31.66556754,18.14887984 54, -31.66474736,18.14832996 55, -31.66416018,18.14780337 56, -31.66367312,18.14684642
57, -31.66315532,18.14582692 58, -31.66255757,18.14489388 59, -31.66186825,18.14401115 60, -31.66110994,18.14320993
61, -31.66027741,18.14251643 62, -31.65939349,18.14194655 63, -31.6584514,18.14148413 64, -31.65733188,18.14066773
65, -31.65613937,18.14006109 66, -31.655323,18.13973292 67, -31.65418298,18.13922219 68, -31.65299646,18.13890208
69, -31.65171128,18.13866228 70, -31.65058039,18.13812756 71, -31.64939295,18.13776627 72, -31.64852978,18.13700012
73, -31.64759966,18.13637777 74, -31.64662321,18.13589101 75, -31.64560243,18.13554424 76, -31.64455714,18.13533348
77, -31.64349177,18.13527282 78, -31.64242342,18.13534554 79, -31.64175229,18.13456114 80, -31.64100618,18.13389298
81, -31.64020335,18.13329146 82, -31.63960164,18.13282405 83, -31.63880872,18.13216848 84, -31.63797004,18.13162666
85, -31.6371019,18.131184 86, -31.6362921,18.13056614 87, -31.63545512,18.13002497 88, -31.63457755,18.12958685
89, -31.63382643,18.12851765 90, -31.63298941,18.1275492 91, -31.63204862,18.12672972 92, -31.63106065,18.12588372
93, -31.63003336,18.12514339 94, -31.62893716,18.12456025 95, -31.62777949,18.12412631 96, -31.62677983,18.12337893
97, -31.62570137,18.12279365 98, -31.62456193,18.122362 99, -31.62339007,18.1221229 100, -31.62219814,18.1220462
101, -31.62107602,18.12162885 102, -31.61990609,18.12138195 103, -31.61872759,18.12127741 104, -31.61763231,18.12064727
105, -31.61671994,18.1201501 106, -31.61577378,18.11973788 107, -31.61507727,18.11941859 108, -31.61484005,18.11923008
109, -31.6140368,18.11840712 110, -31.6136881,18.11791679 111, -31.61317489,18.11647062 112, -31.61248144,18.11513767
113, -31.61208671,18.11396662 114, -31.61159581,18.11285698 115, -31.61100073,18.11182379 116, -31.6103046,18.1108762
117, -31.6095204,18.11003916 118, -31.60865367,18.1093164 119, -31.60771805,18.10871308 120, -31.60672693,18.10824549
121, -31.60570428,18.10725461 122, -31.60457844,18.10644292 123, -31.60369781,18.1056445 124, -31.60274293,18.10498369
125, -31.60172878,18.10446296 126, -31.60066226,18.10408647 127, -31.59957247,18.10387784 128, -31.59846594,18.10381563
129, -31.59736148,18.10391945 130, -31.59628246,18.10417928 131, -31.59523415,18.10459949 132, -31.59422902,18.10513475
133, -31.59328136,18.10580167 134, -31.59240587,18.10660117 135, -31.59105329,18.10706248 136, -31.59009474,18.10690822
137, -31.58910398,18.10689375 138, -31.58812588,18.10698747 139, -31.58717759,18.10644447 140, -31.58617107,18.10563297
141, -31.58511527,18.10490855 142, -31.58419705,18.1041645 143, -31.58330967,18.10346083 144, -31.58235074,18.1028669
145, -31.58133308,18.1024126 146, -31.58040364,18.10180767 147, -31.57957751,18.10094071 148, -31.57867179,18.10018282
149, -31.57768957,18.09956284 150, -31.57521587,18.09749448 151, -31.57447154,18.09670898 152, -31.57368439,18.09596478

ID, Lat, Long

153, -31.57282267,18.09534982 154, -31.57170246,18.09447761 155,-31.57091912,18.09349567 156,-31.57007648,18.09257258
 157, -31.56928652,18.09189251 158, -31.56816895,18.09110283 159,-31.56743381,18.09056277 160,-31.5666568,18.09005693
 161, -31.56585222,18.08913596 162, -31.56519332,18.08818504 163,-31.56443432,18.08732275 164,-31.56361337,18.0865627
 165, -31.56275262,18.08569943 166, -31.56036184,18.08386971 167,-31.55968885,18.08308322 168,-31.55894535,18.08236199
 169, -31.55810824,18.0813786 170, -31.55718982,18.08053894 171,-31.55642053,18.07953196 172,-31.55555904,18.07864681
 173, -31.55461784,18.0778902 174, -31.55382715,18.07718226 175,-31.5529814,18.07655502 176,-31.55209183,18.07550749
 177, -31.55110916,18.07457896 178, -31.54991904,18.07359974 179,-31.54875966,18.07258159 180,-31.54780075,18.0718735
 181, -31.54716466,18.07107483 182, -31.54647104,18.07035203 183,-31.54570606,18.06970082 184,-31.54442556,18.0685376
 185, -31.54376711,18.06770466 186, -31.54307222,18.06689768 187,-31.54231043,18.06615478 188,-31.5415251,18.06549783
 189, -31.54085911,18.06462321 190, -31.54012617,18.06384467 191,-31.53946337,18.06304965 192,-31.53873561,18.0623629
 193, -31.53679013,18.06085736 194, -31.53604355,18.05977061 195,-31.53550213,18.05859948 196,-31.53486459,18.05750504
 197, -31.53411857,18.05649846 198, -31.53327237,18.05561726 199,-31.53232437,18.05486029 200,-31.53130786,18.0542429
 201, -31.53111447,18.05387286 202, -31.53068163,18.05271979 203,-31.53014206,18.05162466 204,-31.52948499,18.0506157
 205, -31.52874832,18.04968601 206, -31.52792925,18.04874715 207,-31.52700519,18.04792972 208,-31.52599951,18.04725716
 209, -31.5247842,18.04639777 210, -31.52418447,18.04521124 211,-31.52352925,18.04414268 212,-31.52278662,18.04316893
 213, -31.5219383,18.04232977 214, -31.52101184,18.04159501 215,-31.52035256,18.04068679 216,-31.51960922,18.03983817
 217, -31.5191873,18.03861972 218, -31.51863286,18.03744548 219,-31.51795101,18.03635804 220,-31.51716084,18.03540248
 221, -31.51625234,18.03439931 222, -31.51523386,18.03355783 223,-31.51413736,18.03289349 224,-31.51295624,18.03240605
 225, -31.51172983,18.03210626 226, -31.51078663,18.0314066 227,-31.50976814,18.03084036 228,-31.50871108,18.03043179
 229, -31.50801359,18.02972889 230, -31.50726566,18.02910494 231,-31.5056763,18.02799182 232,-31.50484758,18.02753673
 233, -31.50414438,18.02642827 234, -31.50332906,18.02542478 235,-31.50240156,18.02455393 236,-31.50140502,18.02383013
 237, -31.50067798,18.02339414 238, -31.49900937,18.0225862 239,-31.49848861,18.02171845 240,-31.49795186,18.02088413
 241, -31.49723051,18.01993376 242, -31.49641958,18.01909696 243,-31.4955225,18.01837643 244,-31.4948146,18.01737061
 245, -31.49400879,18.01648633 246, -31.49311495,18.0157196 247,-31.49236944,18.0147159 248,-31.49150099,18.01381559
 249, -31.49066403,18.01300064 250, -31.48974811,18.01229693 251,-31.4887689,18.01173639 252,-31.48773605,18.0112942
 253, -31.48690129,18.01046254 254, -31.48619148,18.00957938 255,-31.48540267,18.00873222 256,-31.48491698,18.00808425
 257, -31.48430458,18.00711118 258,-31.48361051,18.00623769 259,-31.48283143,18.00544951 260,-31.48217351,18.00423903
 261, -31.48138308,18.00314109 262,-31.48049788,18.00215109 263,-31.47979496,18.00129009 264,-31.4790079,18.00052448
 265, -31.47819241,17.99984727 266,-31.47718114,17.99921813 267,-31.47619753,17.99874719 268,-31.47521983,17.9980407
 269, -31.4743963,17.99739887 270,-31.47351003,17.99685327 271,-31.47266606,17.99612371 272,-31.47174862,17.99550175
 273, -31.47079712,17.99501012 274,-31.46981805,17.99420103 275,-31.46876623,17.9935574 276,-31.46765766,17.99308147
 277, -31.46685029,17.99215874 278,-31.46595221,17.99134064 279,-31.46498688,17.990653 280,-31.46395303,17.99011614
 281, -31.46321712,17.9890857 282,-31.4623701,17.98818136 283,-31.46108463,17.98696087 284,-31.46031089,17.98583758
 285, -31.45946973,17.98481097 286,-31.45876479,17.98388098 287,-31.45797736,17.98304689 288,-31.45713119,17.98232223
 289, -31.45623204,17.98167285 290,-31.45529062,17.98112809 291,-31.45529104,17.94560599 292,-31.71055605,18.15478615

