

APPENDIX C – SITE PHOTOGRAPHS HOTAZEL 2

The site photographs depicted in this appendix, include those taken by the EAP as well as the specialists, as indicated.

SITE PHOTOGRAPHS SHOWING VISUAL CONTEXT (STEAD)

In order to convey the landscape character of the proposed PV site, photographs that characterise the site landscape sense of place were taken as mapped in **Figure 1** below.

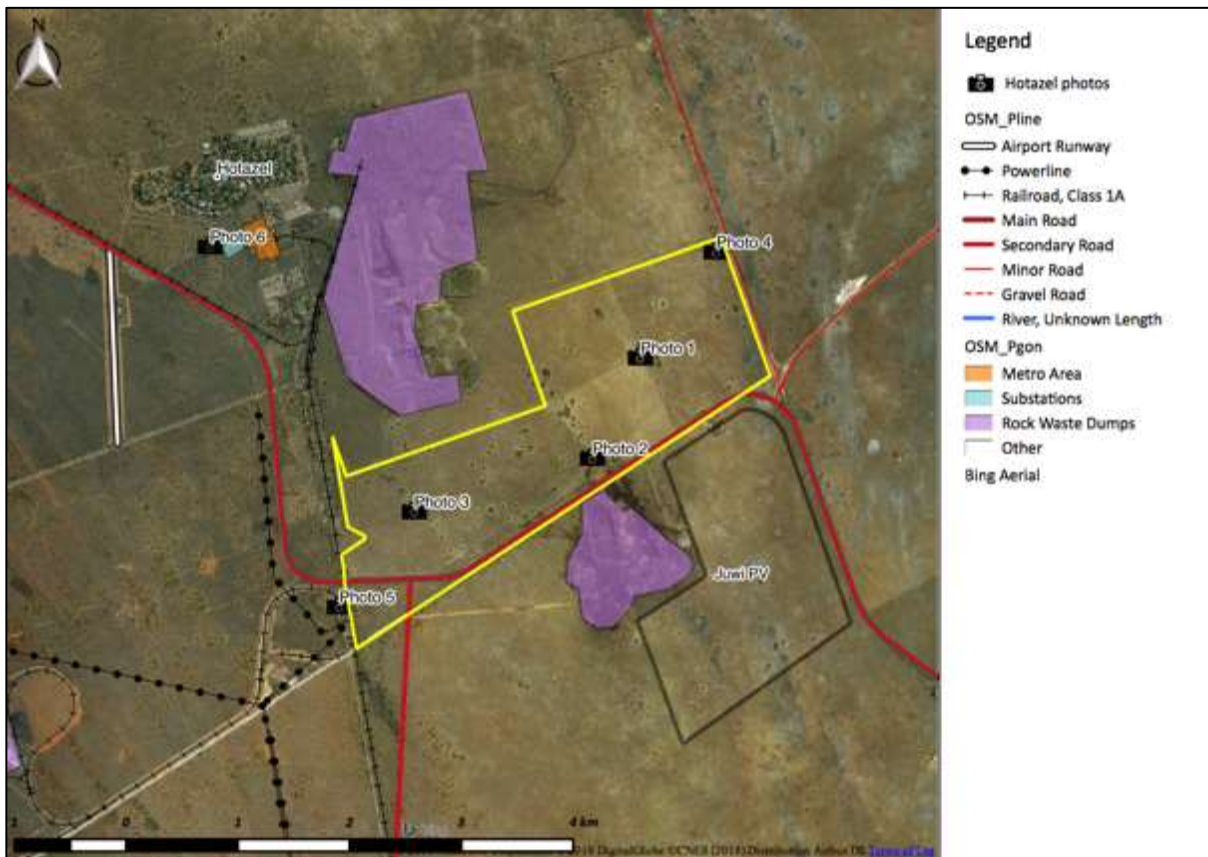


Figure 1: Site photos in relation to the affected property.



Figure 2: View north from **Photo 1** of the grasslands and scattered bushveld trees with the old Hotazel Mine Waste Rock Dumps visible in the background.



Figure 3: View north from **Photo 2** of farm roads and more dense Kathu Bushveld trees.



Figure 4: View north from **Photo 3** of the higher bushveld vegetation.



Figure 5: View west from **Photo 4** of a similar bushveld vegetation.



Figure 6: View north from **Photo 5** of the existing power line and railway line infrastructure along which the proposed power line would be routed.



Figure 7: View west from **Photo 6** of the existing Hotazel Substation to which the proposed power line would be routed.

SITE PHOTOGRAPHS SHOWING HABITAT CONTEXT (TODD)



Figure 8. The western margin of the property, showing the high density of trees in this area with dense *Acacia mellifera* in the foreground and *Acacia haematoxylon* in the distance with occasional *Acacia erioloba*. This part of the site is not within the development footprint of Hotazel 2.



Figure 9. Typical vegetation of the site with the low *Acacia hebeclada* in the foreground and numerous *Acacia haematoxylon* throughout the area.



Figure 10. Example of more open veld from near the centre of the site, showing more open grassland with occasional *Acacia haematoxylon* and *Acacia mellifera*.



Figure 11. Devils' Claw is common at the site, especially in the west of the site.

SITE PHOTOGRAPHIC - CONTEXTUAL (CAPE EAPRAC)

This section provides multiple photographs taken across the entire site, in order to show a contextual overview of the study area































