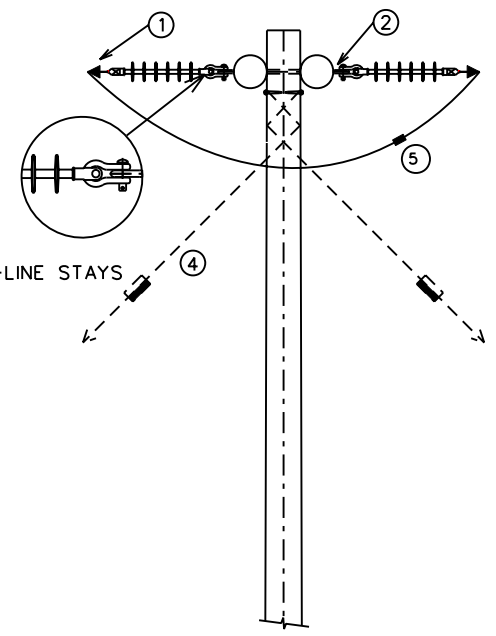
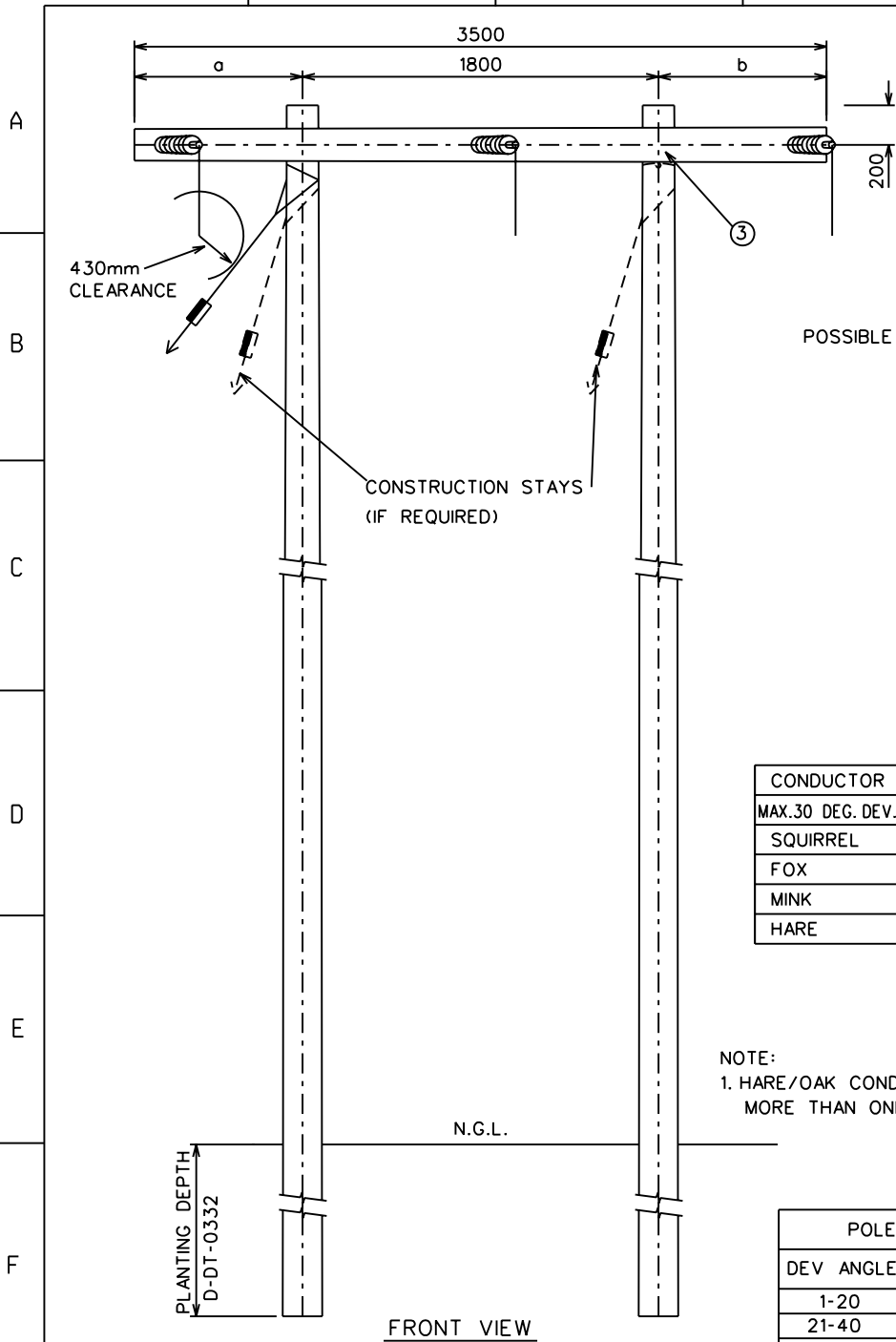


REFERENCE DRAWINGS		
ITEM	DESCRIPTION	DWG NO
CONDUCTOR / INSULATOR ATTACHMENTS		
1	STRAINS -HELICAL DEAD END -PISTOL GRIPS	D-DT-0250 D-DT-0251
INSULATOR / STRUCTURE ATTACHMENTS		
2	STRAINS -THREADED ROD	D-DT-0374
X-ARM STRUCTURE ATTACHMENTS		
3	STRAINS -2x3500 WOOD X-ARM/POLE	D-DT-0318
BONDING AND EARTHING		
	INSULATION CO-ORDINATION	D-DT-0310
STAYS		
4	STAY ATTACHMENTS STAY ASSEMBLY	D-DT-0312 D-DT-0341
PHASING		
	PHASE CONFIGURATION	D-DT-0311
JOINTS		
5	NON-TENSION JOINTS	CHOICE

2	STAY ASSEMBLY ADDED & REF. No'S CHANGED	PBM	P.A.V.	B. HILL	18.10.05			
1	LOGO CHANGED AS PER NEW CORPORATE ID	M.T.M.	P.A. VERMAAK		10.11.04			
REV	REVISION DESCRIPTION	BY	CHKD	AUTH	DATE	PROJECT NO.		
		<b>ESKOM</b> MV RETICULATION THREE PHASE H-POLE / 2 x 3500 WOODEN CROSSARM STRAIN - 0 DEG. DEVIATION						
AUTH: B. BRANFIELD		DATE: 11/01/1999		DATE: 11/01/1999		SET	SHEET	REVISION
DATE: 11/01/1999								
CHKD: B. BRANFIELD		DATE: 11/01/1999		DRAWN: IAN B. P.A. VERMAAK		1	1	2
DATE: 06/07/1998		D-DT-1767						



SIDE VIEW

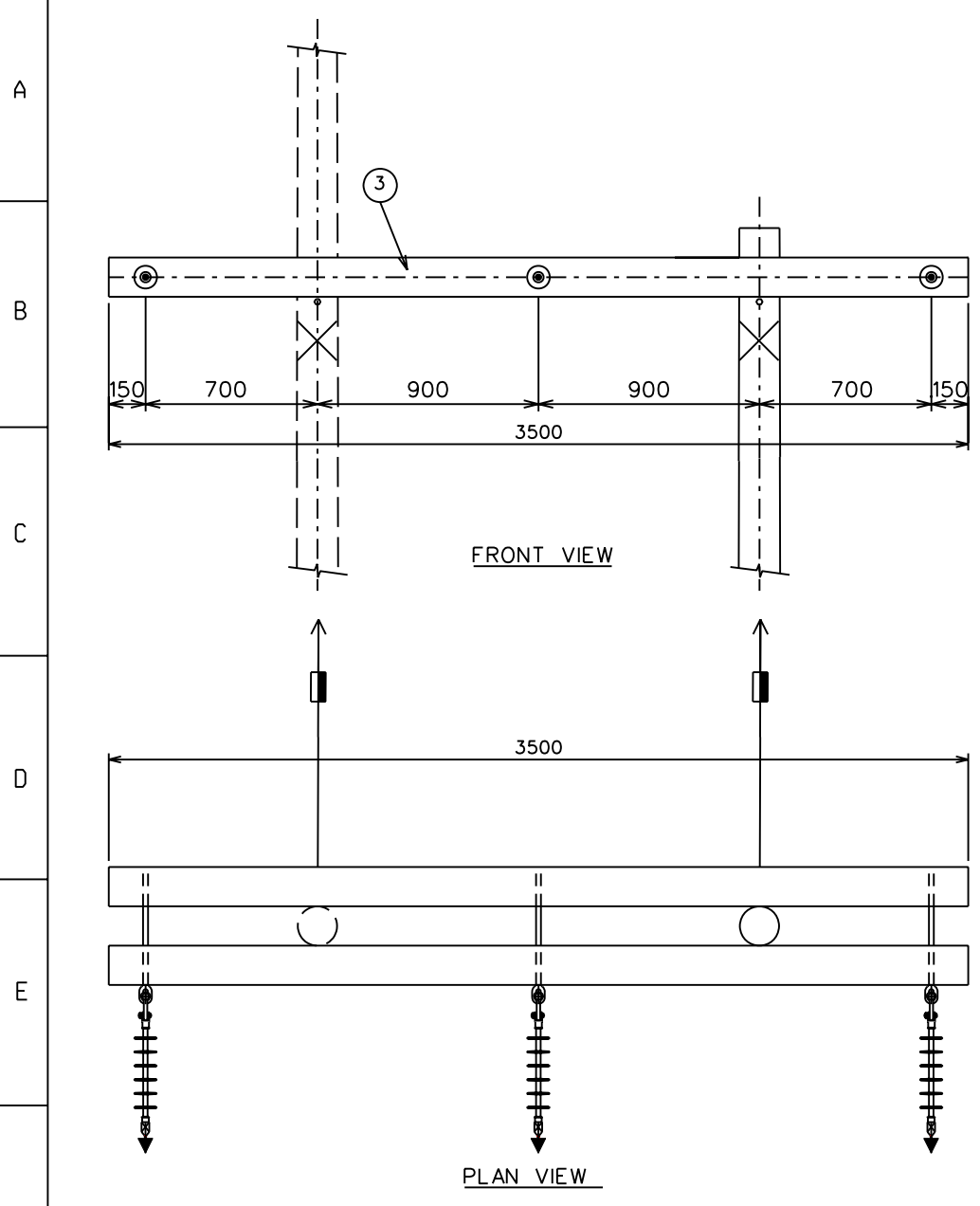
CONDUCTOR	MIN. POLE DIAMETER				CONDUCTOR	MIN. POLE DIAMETER			
MAX.30 DEG. DEV.	9m	10m	11m	12m	MAX.60 DEG. DEV.	9m	10m	11m	12m
SQUIRREL	140	140	160	160	SQUIRREL	140	140	160	160
FOX	140	140	160	160	FOX	140	160	160	160
MINK	140	160	160	160	MINK	160	180	180	200
HARE	160	180	180	180	HARE	180	200	200	N/A

NOTE:  
1. HARE/OAK CONDUCTORS REQUIRE MORE THAN ONE STAY.

DEV ANGLE	a	b
1-20	950	750
21-40	1050	650
41-60	1150	550

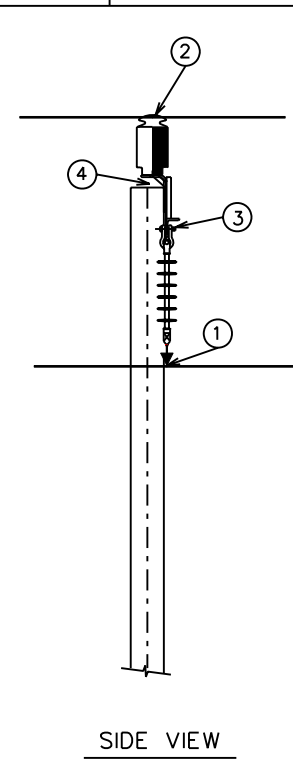
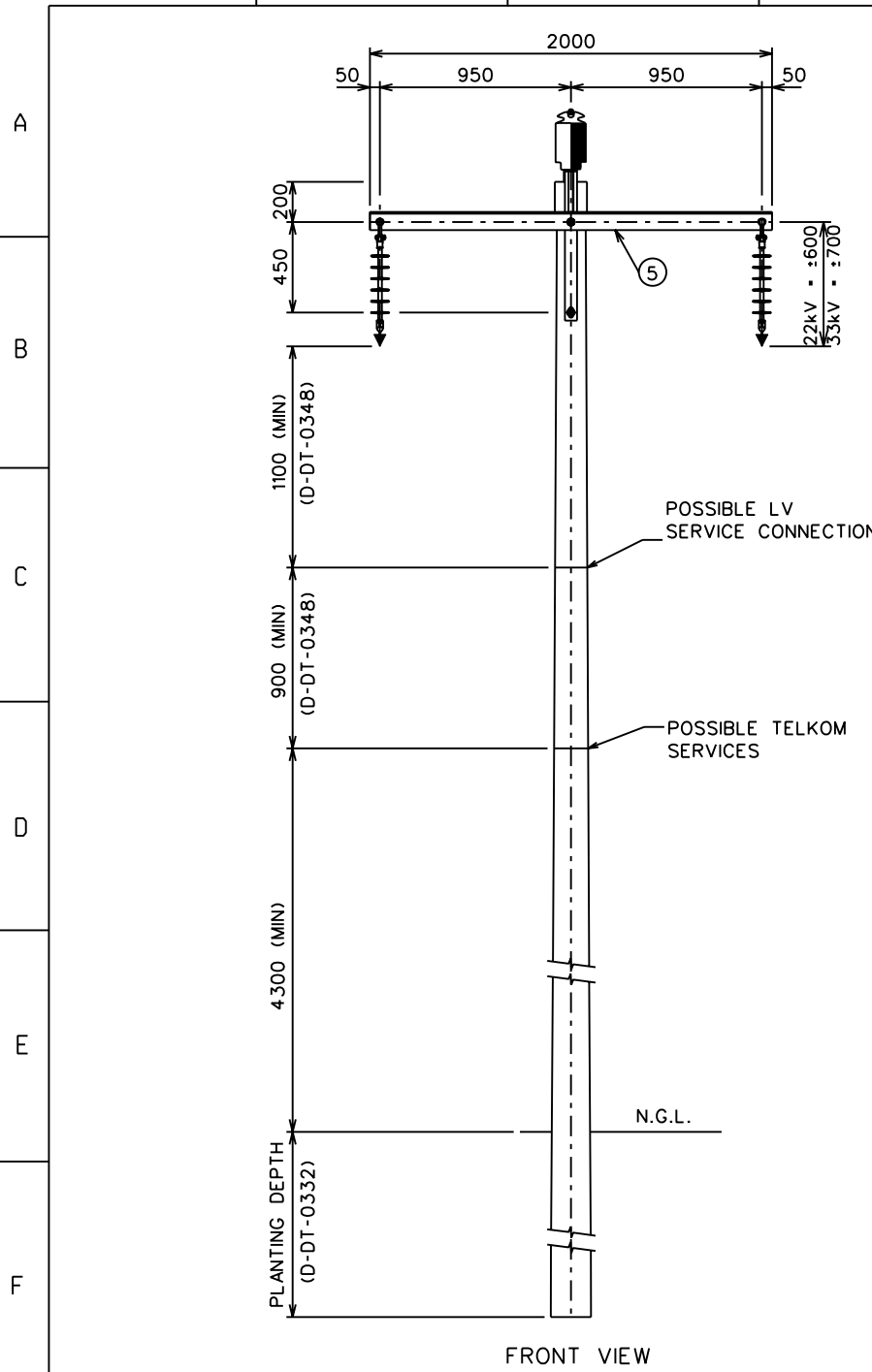
REFERENCE DRAWINGS		
ITEM	DESCRIPTION	DWG NO
CONDUCTOR / INSULATOR ATTACHMENTS		
1	STRAINS -HELICAL DEAD END -PISTOL GRIPS	D-DT-0250 D-DT-0251
INSULATOR / STRUCTURE ATTACHMENTS		
2	STRAINS -THREADED ROD	D-DT-0374
X-ARM STRUCTURE ATTACHMENTS		
3	STRAINS -2x3500 WOOD X-ARM/POLE	D-DT-0318
BONDING AND EARTHING		
INSULATION CO-ORDINATION		D-DT-0310
STAYS		
4	STAY ATTACHMENTS STAY ASSEMBLY	D-DT-0312 D-DT-0341
PHASING		
PHASE CONFIGURATION		D-DT-0311
JOINTS		
5	NON-TENSION JOINTS	CHOICE
2	REF. TO STAY ASSY. ADDED & REF. No'S AND MIN. POLE DIA'S CHANGED	PBM B. HILL 08.12.05
1	LOGO CHANGED AS PER NEW CORPORATE ID	M.T.M. P.A. VERMAAK 10.11.04
REV	REVISION DESCRIPTION	BY CHKD AUTH DATE PROJECT NO.
		<b>ESKOM</b> <b>MV RETICULATION</b> <b>THREE PHASE</b> <b>H-POLE / 2 x 3500 WOODEN CROSSARM</b> <b>STRAIN - MEDIUM (1-60) DEG. DEVIATION</b>
AUTH: B. BRANFIELD DATE: 11/01/1999 CHKD: B. BRANFIELD DATE: 11/01/1999 DRAWN: IAN B. P.A. VERMAAK DATE: 23/06/1998		SET SHEET REVISION 1 1 2
D-DT-1768		

FRONT VIEW



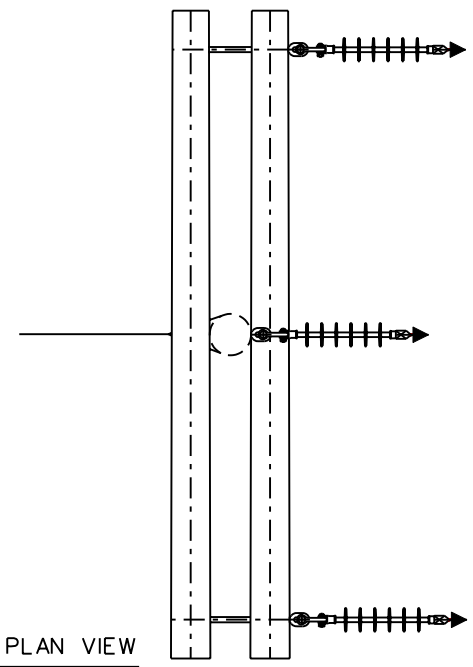
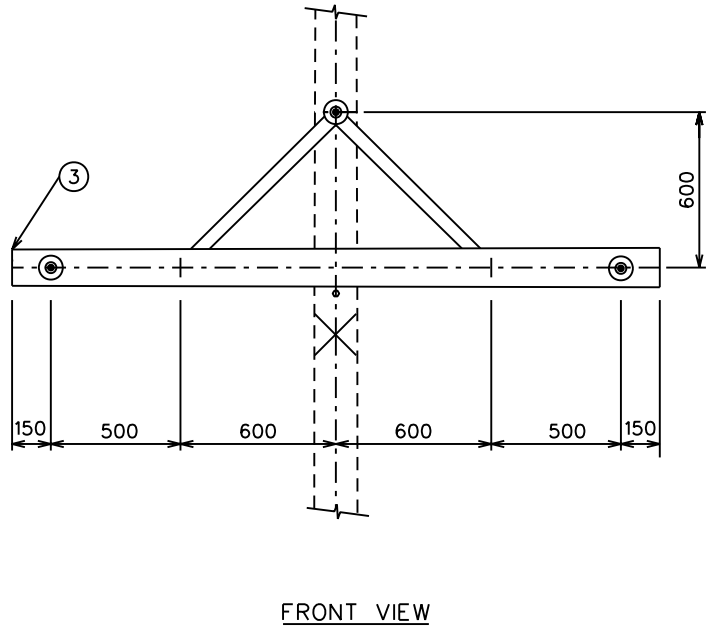
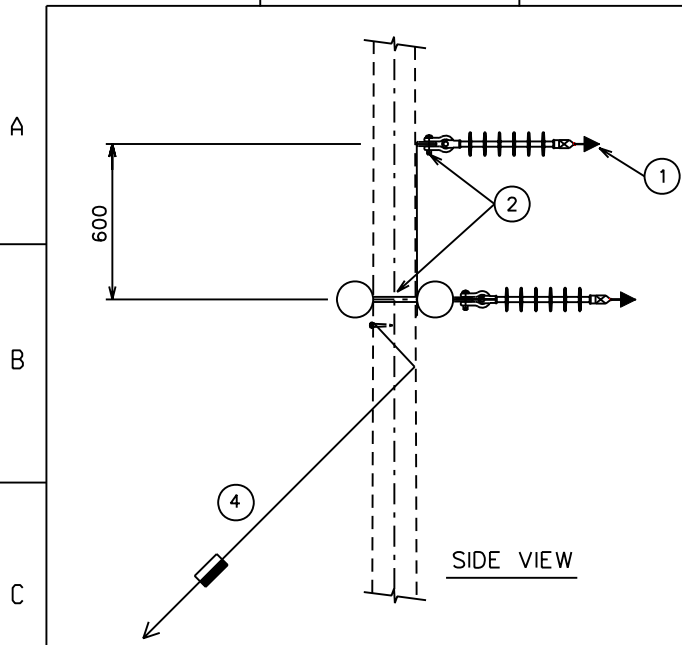
REFERENCE DRAWINGS		
ITEM	DESCRIPTION	DWG NO
CONDUCTOR / INSULATOR ATTACHMENTS		
1	STRAINS -HELICAL DEAD-END -PISTOL GRIPS	D-DT-0250 D-DT-0251
INSULATOR / STRUCTURE ATTACHMENTS		
2	TERMINAL -EYEBOLT	D-DT-0375
X-ARM STRUCTURE ATTACHMENTS		
3	STRAINS -2x3500 WOOD CROSSARM	D-DT-0318
BONDING AND EARTHING		
INSULATION CO-ORDINATE		D-DT-0310
STAYS		
4	STAY ATTACHMENTS STAY ASSEMBLY	D-DT-0312 D-DT-0341
PHASING		
PHASE CONFIGURATION		D-DT-0311

2	STAY ASSEMBLY ADDED & REF. No'S CHANGED	PBM	P.A.V.	B. HILL	18.10.05							
1	LOGO CHANGED AS PER NEW CORPORATE ID	M.T.M.	P.A VERMAAK		11/11/04							
REV	REVISION DESCRIPTION	BY	CHKD	AUTH	DATE	PROJECT NO.						
		ESKOM MV RETICULATION THREE PHASE TAKE - OFF / H-POLE 2 x 3500 WOODEN CROSSARM										
AUTH: B. BRANFIELD		D-DT-1807 <table border="1" style="float: right;"> <thead> <tr> <th>SET</th> <th>SHEET</th> <th>REVISION</th> </tr> </thead> <tbody> <tr> <td>1</td> <td>1</td> <td>2</td> </tr> </tbody> </table>					SET	SHEET	REVISION	1	1	2
SET	SHEET						REVISION					
1	1						2					
DATE: 13/01/1999												
CHKD: B. BRANFIELD												
DATE: 13/01/1999												
DRAWN: P.A. VERMAAK												
DATE: 08/07/1998												



REFERENCE DRAWINGS		
ITEM	DESCRIPTION	DWG NO
CONDUCTOR / INSULATOR ATTACHMENTS		
1	SUSPENSIONS -SUSPENSION CLAMPS	D-DT-0253
2	POSTS -TOP GROOVE TIES	D-DT-0256
INSULATOR / STRUCTURE ATTACHMENTS		
3	SUSPENSIONS -T-FRAME ASSEMBLY	D-DT-0377
4	POSTS -SHORT SPINDLE	D-DT-0390
X-ARM STRUCTURE ATTACHMENTS		
5	SUSPENSION -T-FRAME CROSSARM/POLE	D-DT-0328
BONDING AND EARTHING		
INSULATION CO-ORDINATE		D-DT-0310
PHASING		
PHASE CONFIGURATION		D-DT-0311

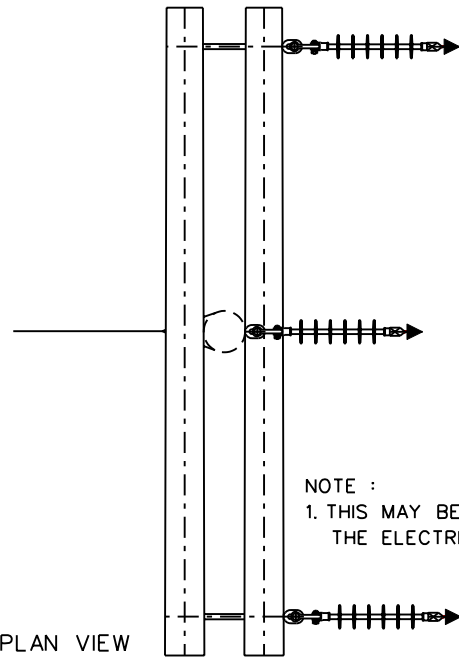
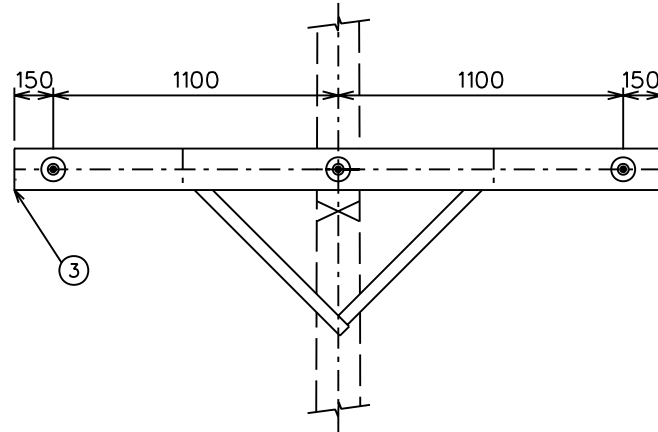
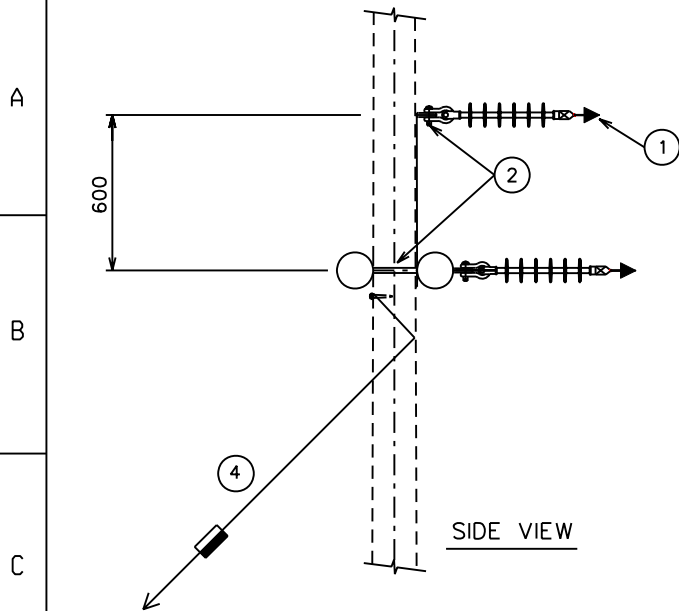
3	REFERENCE NUMBERS CHANGED	PBM	P.A.V.	B. HILL	18.10.05	
1	POLE TOP BRACKET CORRECTED	P.A.V.	B. HILL	B. HILL	09.10.03	
REV	REVISION DESCRIPTION	BY	CHKD	AUTH	DATE	PROJECT NO.
		MV RETICULATION THREE PHASE T-FRAME / 2m STEEL CROSSARM INTERMEDIATE - 0 DEG. DEVIATION				
AUTH: B.BRANFIELD		DATE: 11.01.1999				
CHKD: B.BRANFIELD		DATE: 11.01.1999				
DRAWN: P.A. VERMAAK		DATE: 06.08.1998				
D-DT-1870				SET	SHEET	REVISION
				1	1	2



REFERENCE DRAWINGS		
ITEM	DESCRIPTION	DWG NO
CONDUCTOR / INSULATOR ATTACHMENTS		
1	STRAINS -HELICAL DEAD-END -PISTOL GRIPS	D-DT-0250 D-DT-0251
INSULATOR / STRUCTURE ATTACHMENTS		
2	TERMINAL -EYEBOLT -THREADED ROD	D-DT-0375 D-DT-0376
X-ARM STRUCTURE ATTACHMENTS		
3	STRAINS -2x2500 WOOD CROSSARM	D-DT-0320
BONDING AND EARTHING		
INSULATION CO-ORDINATION		D-DT-0310
STAYS		
4	STAY ATTACHMENTS STAY ASSEMBLY	D-DT-0312 D-DT-0341
PHASING		
PHASE CONFIGURATION		D-DT-0311

REV	REVISION DESCRIPTION	BY	CHKD	AUTH	DATE	PROJECT NO.
2	STAY ASSEMBLY ADDED. REF. No'S CHANGED AND OPTION 1 & 2 SHOWN ON OWN DRGS	PBM	P.A.V.	B. HILL	18.10.05	
1	LOGO CHANGED AS PER NEW CORPORATE ID	M.T.M.	P.A. VERMAAK		11.11.2004	

	<b>ESKOM</b> MV RETICULATION THREE PHASE TAKE - OFF 2 x 2500 WOOD CROSSARM (OPTION 1)		
	AUTH: B. BRANFIELD		
	DATE: 13/01/1999		
	CHKD: B. BRANFIELD		
DATE: 13/01/1999	<b>D-DT-1805</b>		SET
DRAWN: P.A. VERMAAK			SHEET
DATE: 08/07/1998			REVISION
	2	1	2



NOTE :  
 1. THIS MAY BE USED IF CLEARANCE IS A PROBLEM.  
 THE ELECTRICAL SPAN WILL BE REDUCED TO 140m.

REFERENCE DRAWINGS		
ITEM	DESCRIPTION	DWG NO
CONDUCTOR / INSULATOR ATTACHMENTS		
1	STRAINS -HELICAL DEAD-END -PISTOL GRIPS	D-DT-0250 D-DT-0251
INSULATOR / STRUCTURE ATTACHMENTS		
2	TERMINAL -EYEBOLT -THREADED ROD	D-DT-0375 D-DT-0376
X-ARM STRUCTURE ATTACHMENTS		
3	STRAINS -2x2500 WOOD CROSSARM	D-DT-0320
BONDING AND EARTHING		
INSULATION CO-ORDINATION		D-DT-0310
STAYS		
4	STAY ATTACHMENTS STAY ASSEMBLY	D-DT-0312 D-DT-0341
PHASING		
PHASE CONFIGURATION		D-DT-0311

REV	REVISION DESCRIPTION	BY	CHKD	AUTH	DATE	PROJECT NO.
2	STAY ASSEMBLY ADDED, REF. No'S CHANGED AND OPTION 1 & 2 SHOWN ON OWN DRGS	PBM	P.A.V.	B. HILL	18.10.05	
1	LOGO CHANGED AS PER NEW CORPORATE ID	M.T.M.	P.A. VERMAAK		11.11.2004	



AUTH:	B. BRANFIELD
DATE:	13/01/1999
CHKD:	B. BRANFIELD
DATE:	13/01/1999
DRAWN:	P.A. VERMAAK
DATE:	08/07/1998

**ESKOM**  
 MV RETICULATION  
 THREE PHASE  
 TAKE - OFF  
 2 x 2500 WOOD CROSSARM  
 (OPTION 2)

D-DT-1805	SET	SHEET	REVISION
	2	2	2

1

2

3

4

A

B

C

D

E

F

A

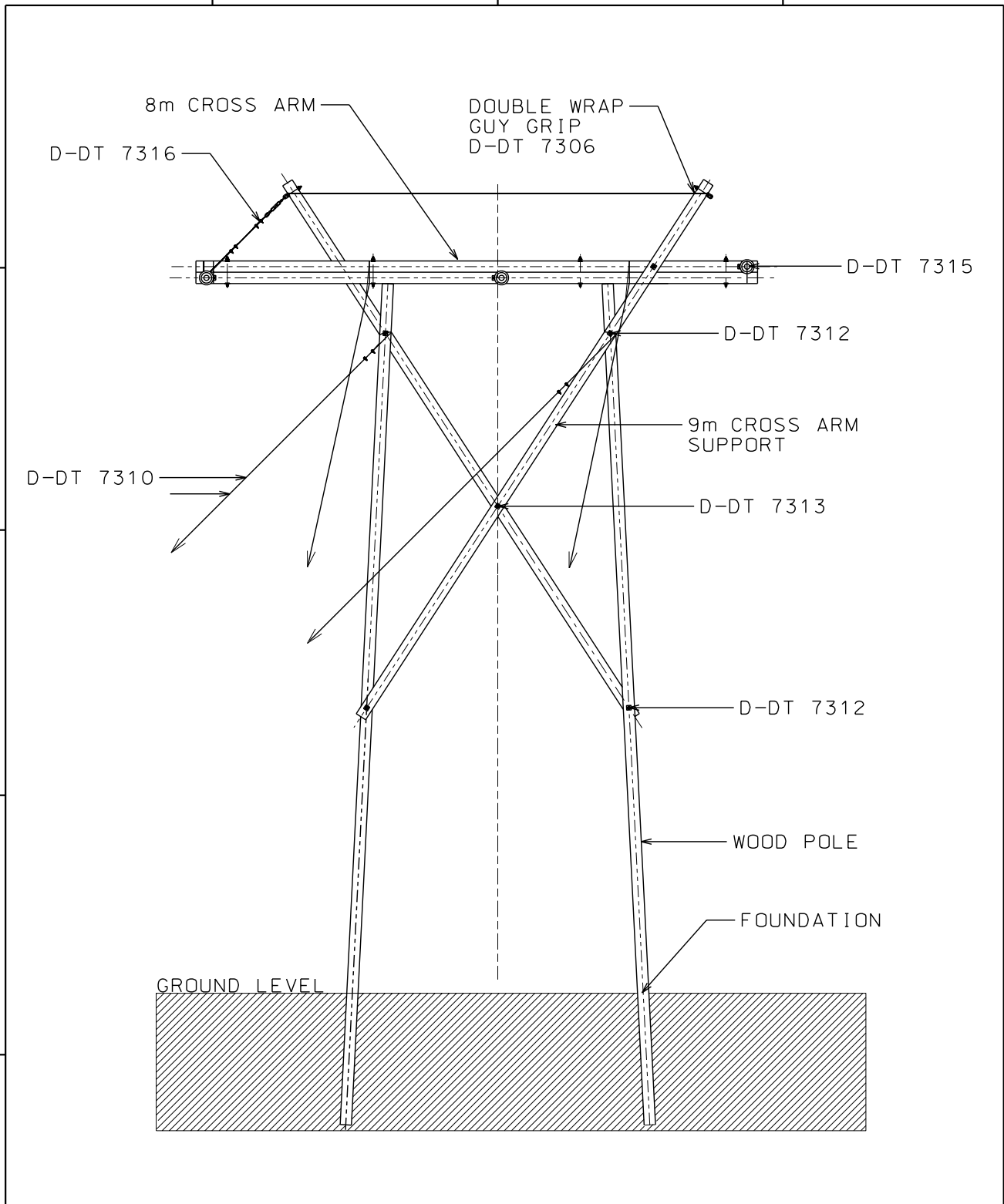
B

C

D

E

F



1	DRAWING SHEET UPDATED	SLR	RAB	AB	JAN 2004	
REV	REVISION DESCRIPTION	BY	CHKD	AUTH	DATE	PROJECT NO.

**Eskom**  
Distribution

AUTH: A BEKKER  
 DATE: JAN 2004  
 CHKD: RAB  
 DATE: JAN 2004  
 DRAWN: SLR  
 DATE: JAN 2004

**DISTRIBUTION TECHNOLOGY**  
 RETICULATION/SUB-TRANSMISSION LINES  
 66kV 5-POLE ANGLE STRAIN STRUCTURE  
 GENERAL ARRANGEMENT

**D-DT 7608**

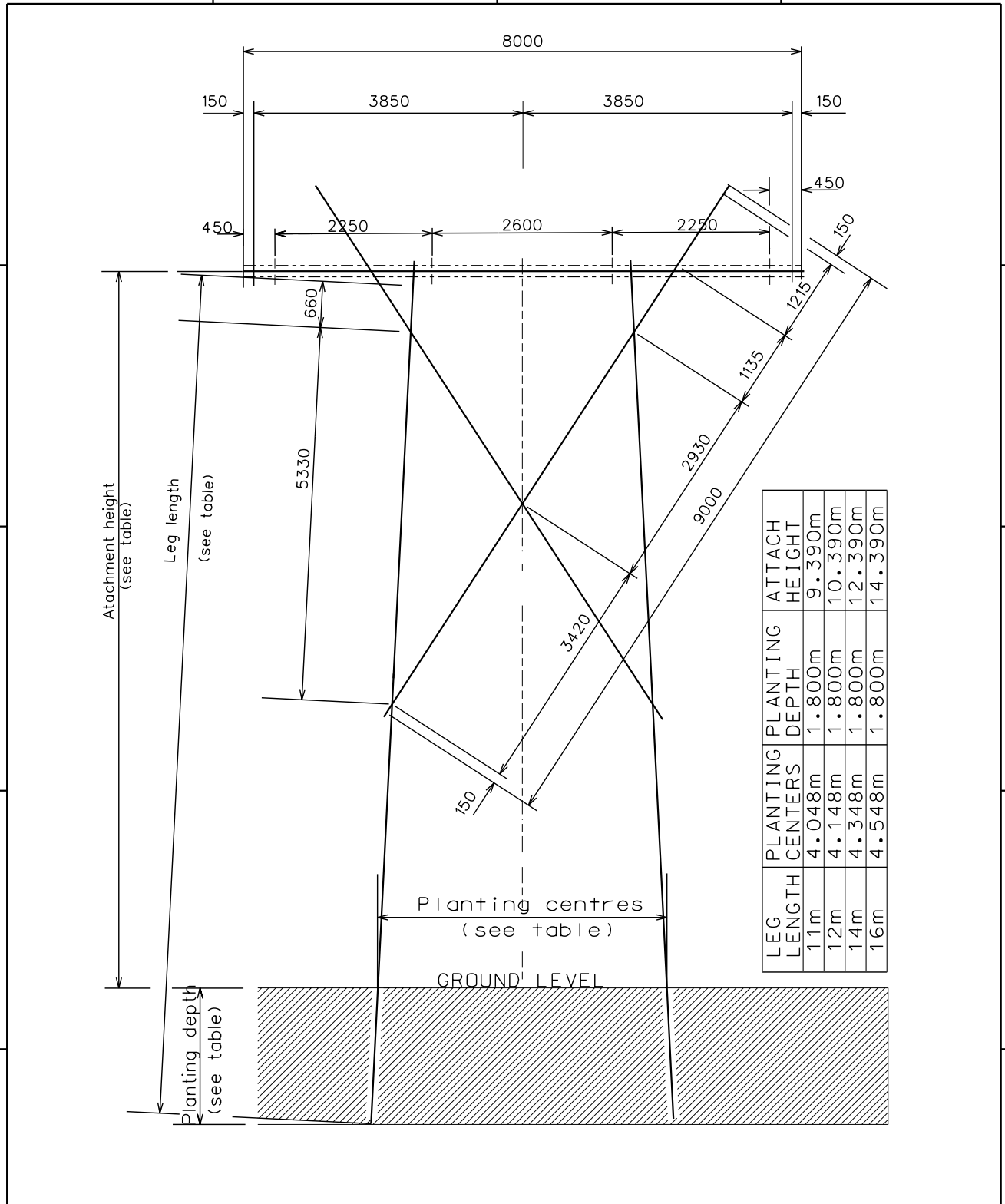
SET	SHEET	REVISION
2	1	1

1

2

3

4 A4L















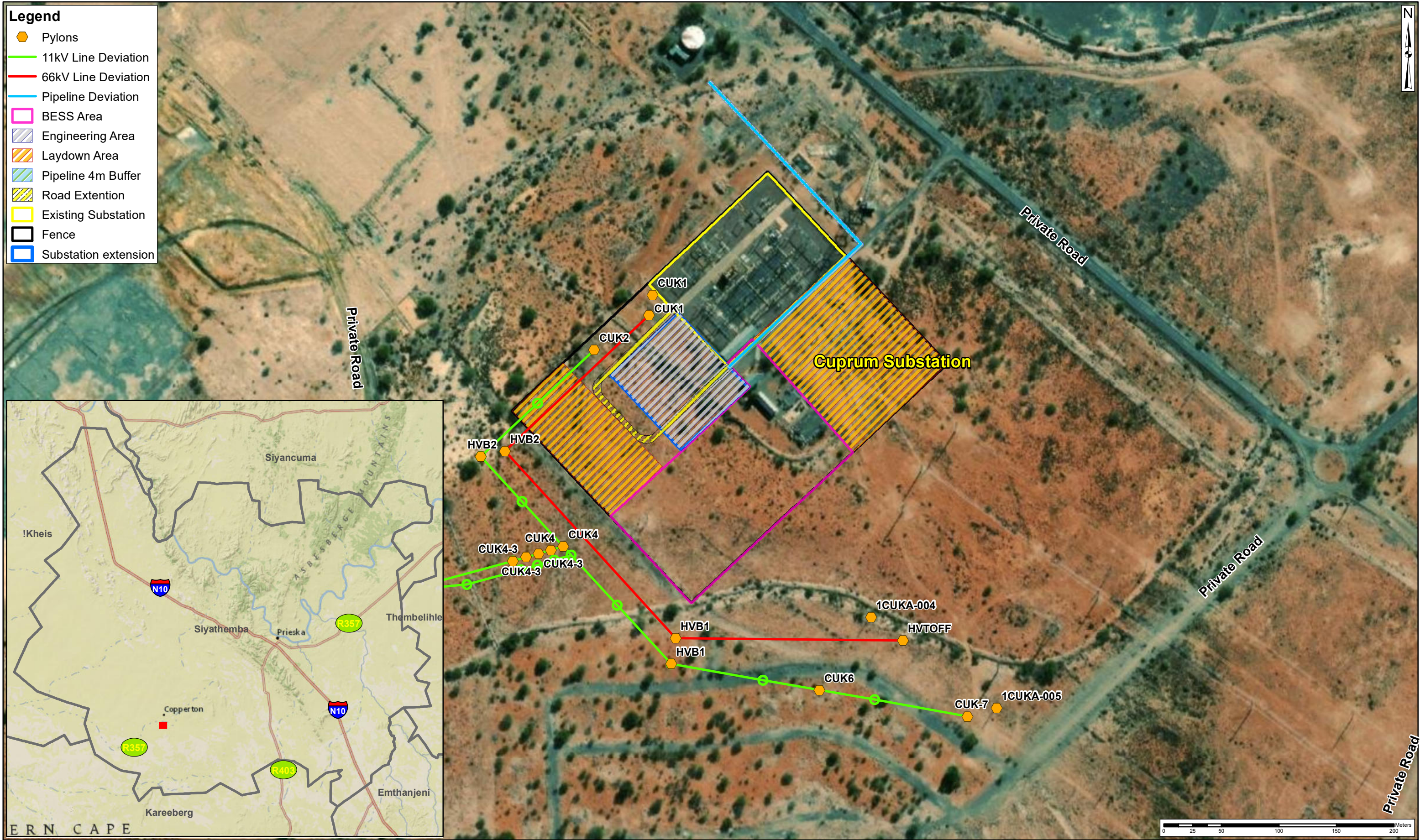
1	DRAWING SHEET UPDATED	SLR	RAB	AB	JAN 2004	
REV	REVISION DESCRIPTION	BY	CHKD	AUTH	DATE	PROJECT NO.


<p><b>Eskom</b> Distribution</p> <p>AUTH: A BEKKER</p> <p>DATE: JAN 2004</p> <p>CHKD: RAB</p> <p>DATE: JAN 2004</p> <p>DRAWN: SLR</p> <p>DATE: JAN 2004</p>	<p><b>DISTRIBUTION TECHNOLOGY</b></p> <p>RETICULATION/SUB-TRANSMISSION LINES</p> <p>66kV 5-POLE ANGLE STRAIN STRUCTURE</p> <p>DIMENSION DRAWING</p>		
	<p><b>D-DT 7608</b></p>		
	SET	SHEET	REVISION
	<b>2</b>	<b>2</b>	<b>1</b>



**Legend**

-  Pylons
-  11kV Line Deviation
-  66kV Line Deviation
-  Pipeline Deviation
-  BESS Area
-  Engineering Area
-  Laydown Area
-  Pipeline 4m Buffer
-  Road Extension
-  Existing Substation
-  Fence
-  Substation extension



<b>Project Title:</b>	<b>Eskom Battery Energy Storage System (BESS): Basic Assessment</b>	<b>Scale 1:3 000</b> <small>(When page size is: A3 landscape)</small>	<b>Figure 1</b>
	<b>Siyathemaba Local Municipality, Northern Cape Province</b>	Projection: Transverse Mercator Datum: Hartbeesthoek 1994 Central Meridian: 23.0	<b>Sources:</b> Source: Esri, Maxar, GeoEye, Earthstar Geographics, CNES/Airbus DS, USDA, USGS, AeroGRID, IGN, and the GIS User Community Esri, HERE, Garmin, (c) OpenStreetMap contributors National Geographic, Esri, Garmin, HERE, UNEP-WCMC, USGS, NASA, ESA, METI, NRCAN, GEBCO, NOAA, increment P Corp.
<b>Map Title:</b>	<b>Locality Map</b>	Compiled By: GA Maree GIS QC By: D Govender	
<small>Whilst every care has been taken in compiling the information on this map, AECOM cannot accept responsibility for any inaccuracies.</small>		Date Saved: 2022/11/15 Project Number: 60657237	
<small>© Copyright</small>		Map Ref: LocalityPlan4.mxd Revision: 00	
		<small>L:\Legacy\GISData\7_Projects\60657237_EskomBESS_Prieska\mxd\LocalityPlan4.mxd</small>	