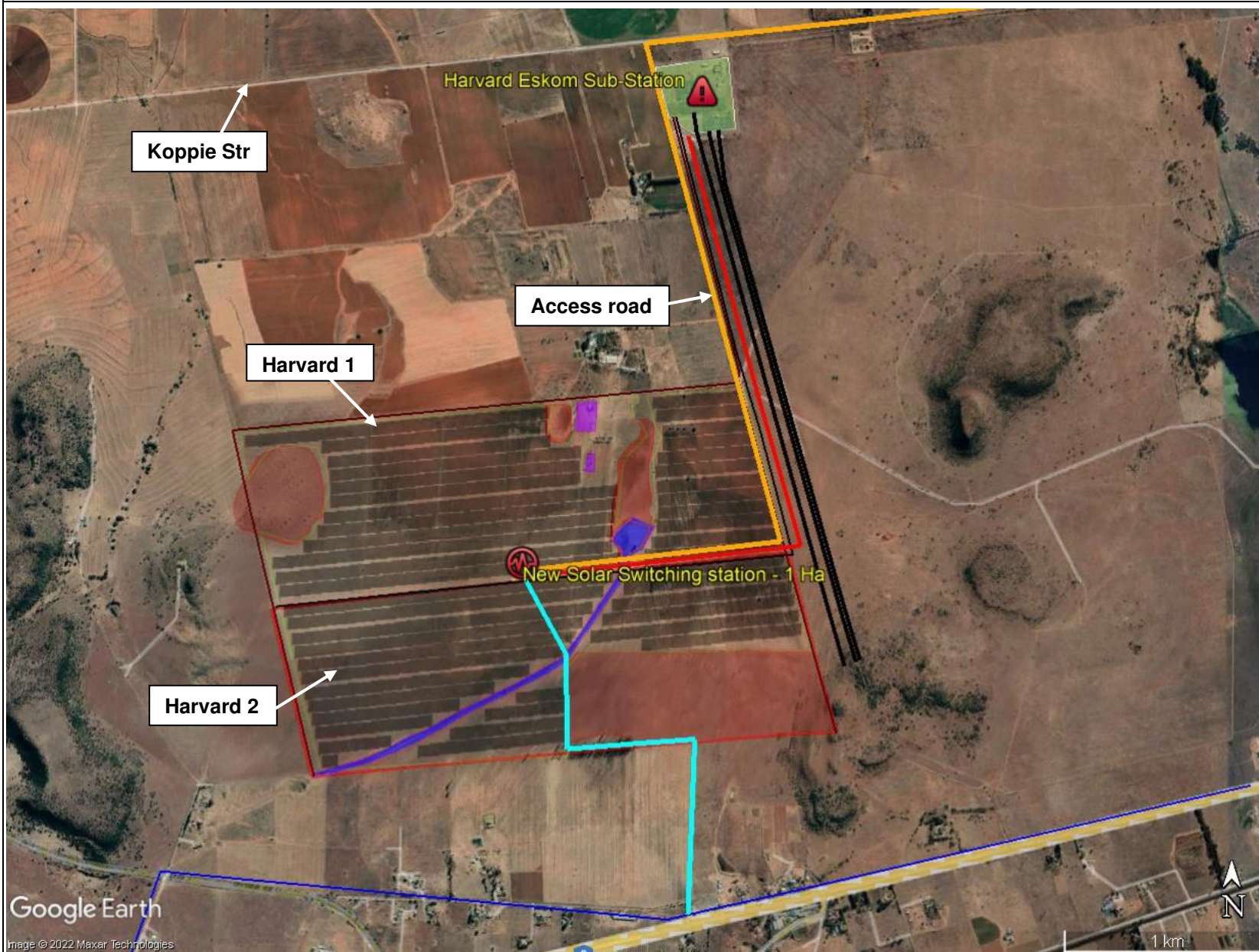


PROPOSED HARVARD 2 SOLAR PV FACILITY, REMAINDER OF PORTION 5 OF FARM SPES BONA NO. 2355, BLOEMFONTEIN



DEVELOPMENT AREAS

- Solar Panels
- Harvard Substation
- Access road
- Overhead Grid Connection
- Water pipeline

EXISTING INFRASTRUCTURE

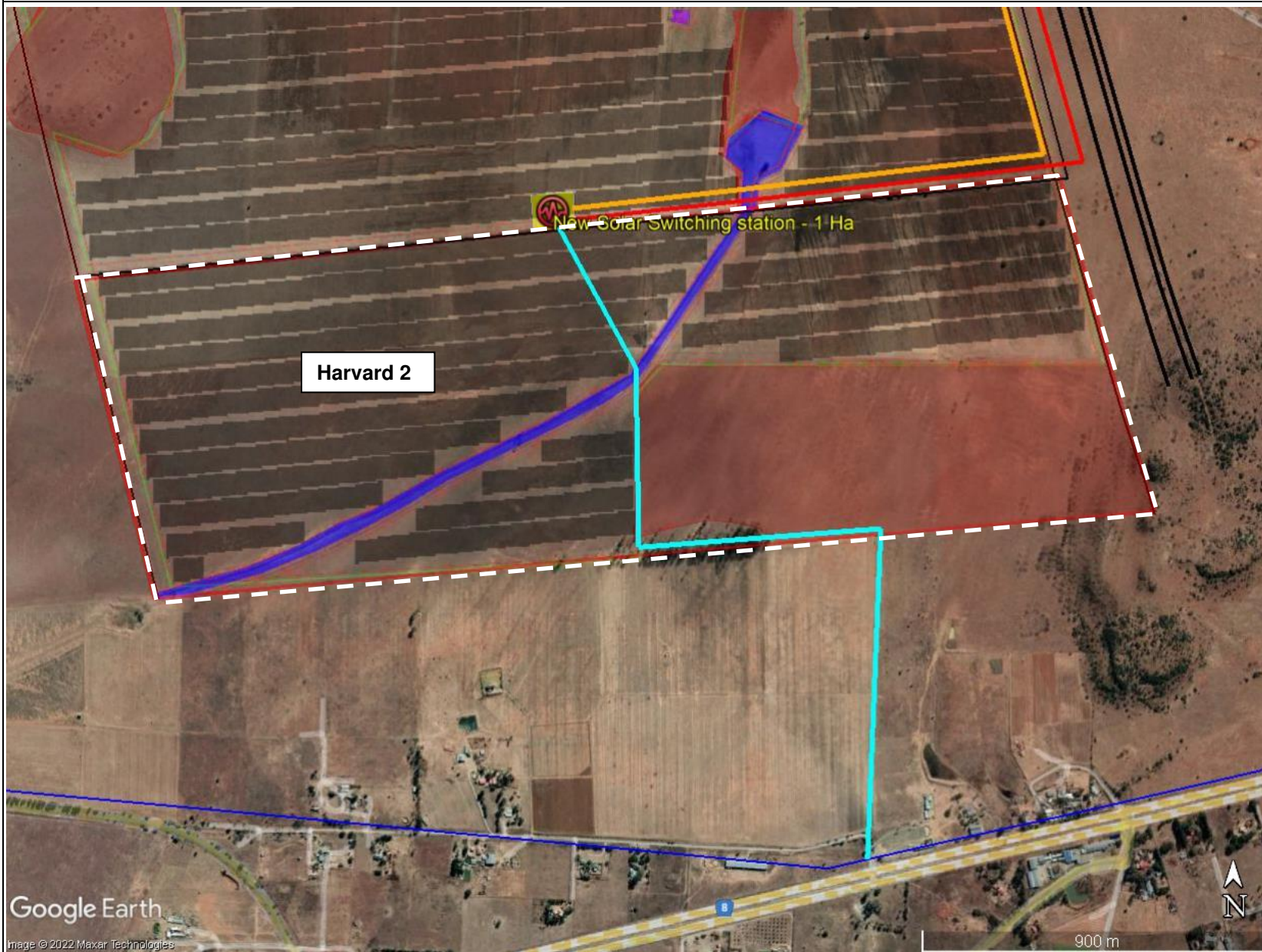
- ESKOM Powerlines
- Bloemwater Reticulation

IDENTIFIED NO-GO AREAS

- Sensitive Areas
- Heritage Sensitive Areas
- Drainage channel and wetland



PROPOSED HARVARD 2 SOLAR PV FACILITY REMAINDER OF PORTION 5 OF FARM SPES BONA NO. 235, BLOEMFONTEIN



DEVELOPMENT AREAS

 Harvard 2 Facility

 Solar Panels

 Access road

 Overhead Grid Connection

 Water pipeline

EXISTING INFRASTRUCTURE

 ESKOM Powerlines

 Bloemwater Reticulation

IDENTIFIED NO-GO AREAS

 Sensitive Areas

 Heritage Sensitive Areas

 Drainage channel and wetland