



Site Verification Report

**Proposed Makoaneng Solar Power Plant, near
Bloemfontein, Free State province**

PROJECT DETAIL

DFFE Reference No's.	:	To be confirmed
Project Title	:	Proposed Makoaneng Solar Power Plant, near Bloemfontein, Free State province
Authors	:	Mr. Herman Alberts Ms. Christia van Dyk
Client	:	Makoaneng Solar Power Plant (RF)(Pty) Ltd
Report Status	:	Site Verification Report
Submission date	:	August 2023

When used as a reference this report should be cited as: Solis Environmental (2023). Site verification Report: The development of the proposed Makoaneng Solar Power Plant, near Bloemfontein, Free State province

COPYRIGHT RESERVED

This technical report has been produced for Makoaneng Solar Power Plant (RF)(Pty) Ltd. The intellectual property contained in this report remains vested in Solis Environmental and Makoaneng Solar Power Plant (RF)(Pty) Ltd. No part of the report may be reproduced in any manner without written permission from Solis Environmental or and Makoaneng Solar Power Plant (RF)(Pty) Ltd.



TABLE OF CONTENTS

PROJECT DETAIL	2
TABLE OF CONTENTS	3
LIST OF FIGURES	4
LIST OF TABLES	4
1 INTRODUCTION	5
1.1 Specialist Assessments identified by the Screening Report	5
1.2 Sensitivities of the studies not conducted	8
1.3 Current/ Verified Land Use.....	10
2 SITE VERIFICATION	13
2.1 Civil Aviation Theme	13
2.2 Defence Theme	14
2.3 Radio Frequency Interference (RFI) Theme	14
3 CONCLUSION.....	16



LIST OF FIGURES

Figure 1.1: Civil aviation sensitivity as indicated by the DFFE Screening Tool Report	8
Figure 1.2: Defence theme sensitivity as indicated by the DFFE Screening Tool Report	9
Figure 1.3: RFI theme sensitivity as indicated by the DFFE Screening Tool Report	10
Figure 1.4: Aerial view of the PAOI	11
Figure 1.5: General Conditions of the site	11
Figure 1.6: Aerial view of the existing Eskom Power Lines within the PAOI.....	12
Figure 1.7: Aerial view of the proposed power line route	12

LIST OF TABLES

Table 1.1: Specialist studies identified by the DFFE Screening tool and specialist studies conducted.....	6
Table 2.1: Verification of DFFE Screening Report Sensitivity Ratings for the Civil Aviation Theme.....	13
Table 2.2: Verification of DFFE Screening Report Sensitivity Ratings for the Defence Theme.....	14
Table 2.3: Verification of the DFFE Screening Tool Report Sensitivity Ratings for the Radio Frequency Interference (RFI) Theme	14

1 INTRODUCTION

This Site Verification Report is compiled in compliance with Government Notice No. 320, dated 20 March 2020, which includes the requirement for an Initial Site Sensitivity Verification Report to be produced for a development footprint. The outcome of the Initial Site Verification must be recorded in the form of a report that-

- a) Confirms or disputes the current use of the land and environmental sensitivity as identified by the national web based environmental screening tool;
- b) Contains a motivation and evidence of either the verified or different use of the land and environmental sensitivity;
- c) Is submitted together with the relevant reports prepared in accordance with the requirements of the Environmental Impact Assessment Regulations.

1.1 Specialist Assessments identified by the Screening Report

The DFFE Screening Tool Report (Appendix B of the Scoping Report) identified the following specialist assessment to be included in the assessment:

1. Agricultural Impact Assessment
2. Landscape/Visual Impact Assessment
3. Archaeological and Cultural Heritage Impact Assessment
4. Paleontology Impact Assessment
5. Terrestrial Biodiversity Impact Assessment
6. Aquatic Biodiversity Impact Assessment
7. Civil Aviation Assessment
8. Defence Assessment
9. RFI Assessment
10. Geotechnical Assessment
11. Social Economic Assessment
12. Plant Species Assessment
13. Animal Species Assessment

The table included below provides an indication of the specialist studies identified by the DFFE Screening Tool Report, as well as an indication of whether the studies were undertaken or not and a motivation or confirmation of the studies being included or not.

Table 1.1: Specialist studies identified by the DFFE Screening tool and specialist studies conducted

Study identified in the DFFE Screening Tool and sensitivity	Study included?	Appendix
Agricultural Impact Assessment Sensitivity: High	Yes	A Soil and Agriculture Impact Assessment is included in Appendix E4.
Landscape / Visual Impact Assessment Sensitivity: Very High	Yes	A Visual Impact Assessment is included in Appendix E3.
Archaeological and Cultural Heritage Impact Assessment Sensitivity: Low	Yes	A Heritage Impact Assessment is included in Appendix E5.
Palaeontological Impact Assessment Sensitivity: High	Yes	A Palaeontological Impact Assessment is included in Appendix E5.
Terrestrial Biodiversity Impact Assessment Sensitivity: Very High	Yes	A Terrestrial Biodiversity Assessment Report is included in Appendix E1. This assessment has been undertaken in terms of the Protocols of GNR320 – refer to the content of the report.
Aquatic Biodiversity Impact Assessment Sensitivity: Very High	Yes	A Wetland Assessment Report is included in Appendix E. This assessment has been undertaken in terms of the Protocols of GNR320 – refer to the content of the report.
Avian Impact Assessment Sensitivity: Low	Yes	Avifauna Impact Assessment Report is included as Appendix E. This assessment has been undertaken in terms of the

		Protocols of GNR320 – refer to the content of the report.
Civil Aviation Assessment Sensitivity: Low	No	Study not included. Refer to section 2 of this report for site verification.
Defence Theme Sensitivity: Low	No	Study not included. Refer to section 2 of this report for site verification.
RFI Assessment Sensitivity: Medium	No	Study not included. Refer to section 2 of this report for site verification.
Geotechnical Assessment Sensitivity: Not indicated	No	<p>The Geotechnical Assessment will be conducted before construction begins as part of the micro-siting of the facility layout.</p> <p>The consideration of geotechnical aspects is considered to be of a technical concern rather than an environmental concern.</p>
Plant species Assessment Sensitivity: Low	Yes	<p>Refer to Appendix E1. The Terrestrial Biodiversity Impact Assessment also includes the relevant Plant Species Assessment.</p> <p>This assessment has been undertaken in terms of the Protocols of GNR320 – refer to the content of the report.</p>
Animal Species Assessment Sensitivity: Medium	Yes	<p>Refer to Appendix E1. The Terrestrial Biodiversity Impact Assessment also includes the relevant Animal Species Assessment.</p> <p>This assessment has been undertaken in terms of the</p>

		Protocols of GNR320 – refer to the content of the report.
--	--	---

1.2 Sensitivities of the studies not conducted

This report has been produced specifically to consider the Civil Aviation, Defence and RFI theme and addresses the content requirements of (a) and (b) above.

The sensitivities for the Civil Aviation, Defence and RFI themes associated with Makoaneng Solar Power Plant are as follows:

1.2.1 Civil Aviation Theme

The site sensitivity is classified as Low due to no other civil aviation aerodromes are in close proximity of the project site. Only the corner of the development footprint is within the medium sensitivity.

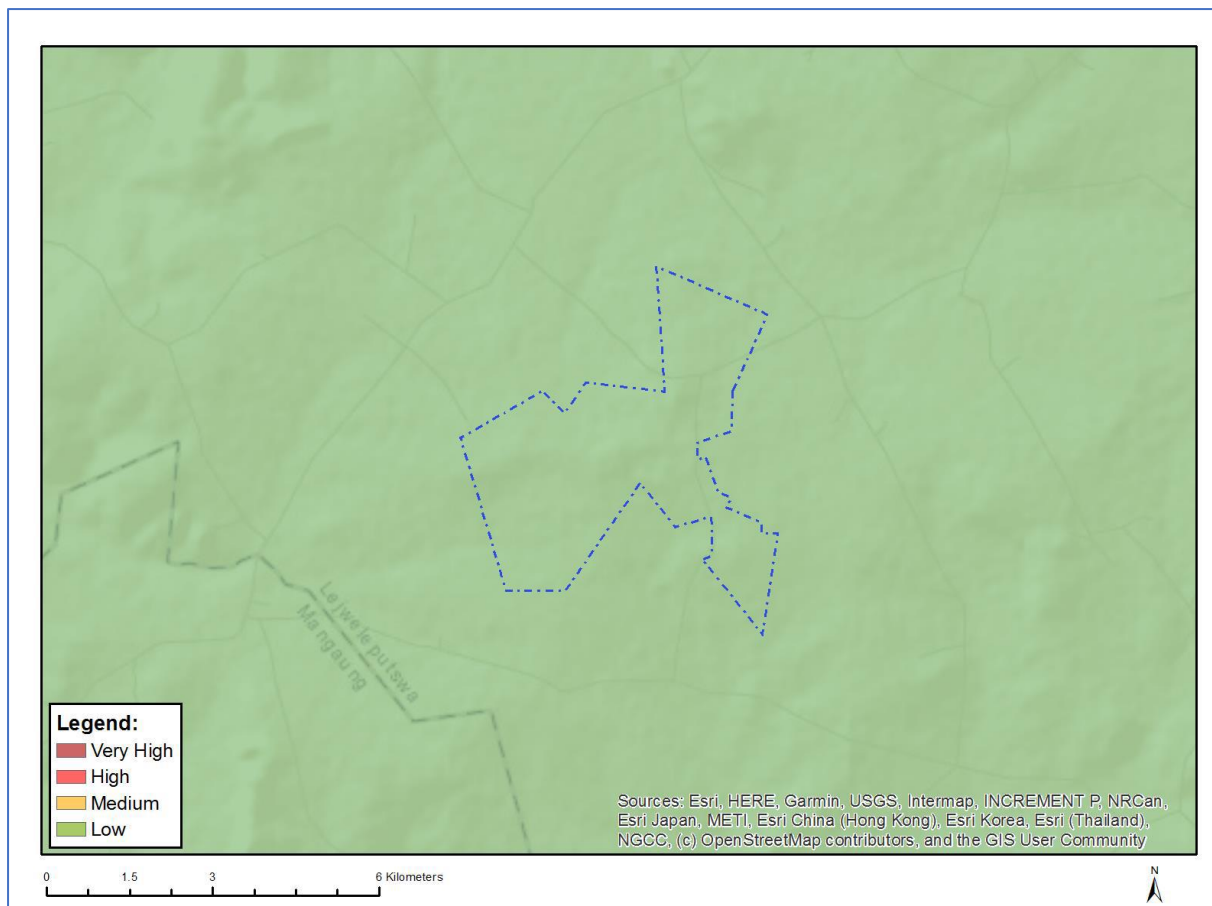


Figure 1.1: Civil aviation sensitivity as indicated by the DFFE Screening Tool Report

1.2.2 Defence theme

The defence theme is considered to be low for the proposed project. Refer to Figure 1.2 below.

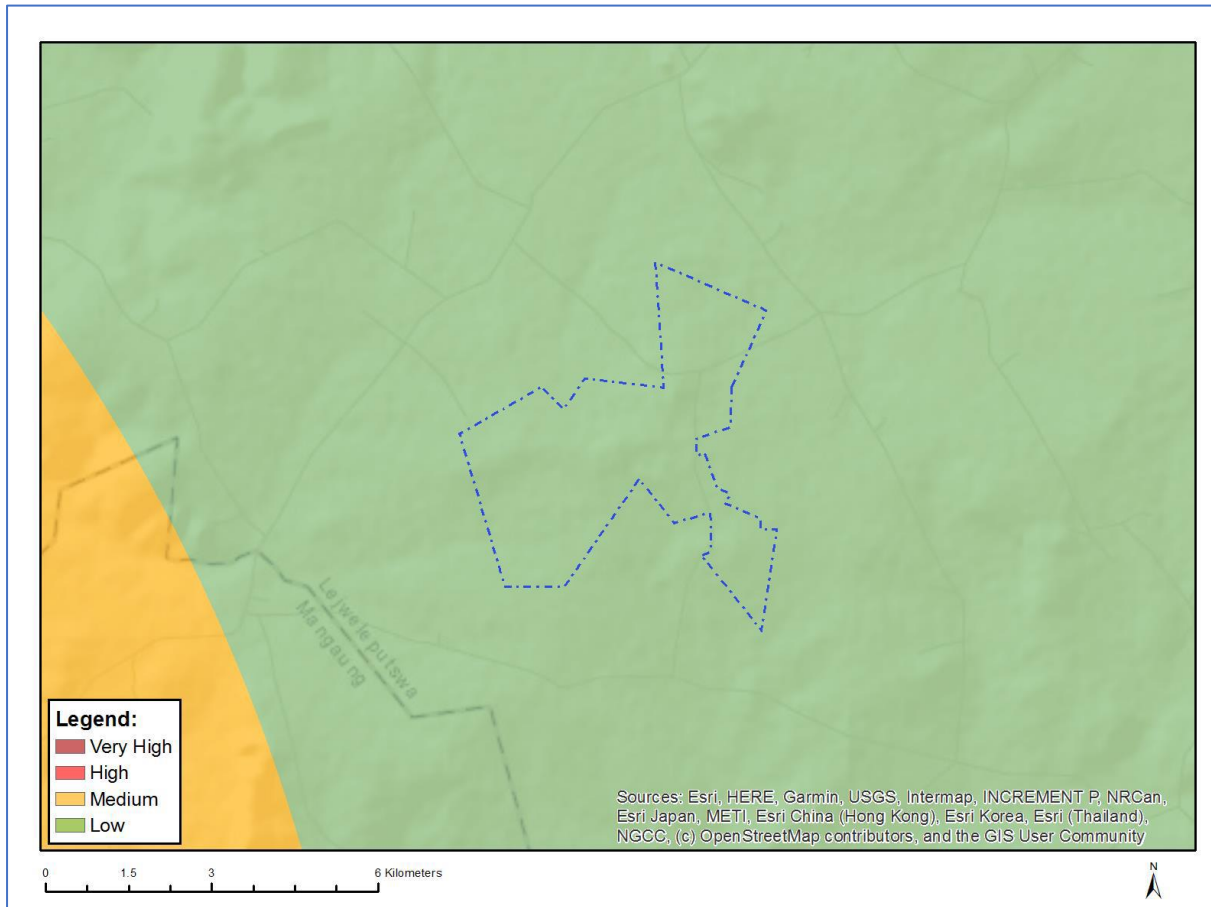


Figure 1.2: Defence theme sensitivity as indicated by the DFFE Screening Tool Report

1.2.3 RFI Theme

The sensitivity of the RFI theme is considered to be low to medium. The western section of the assessment area overlaps with the medium sensitivity, since that section is between 30km to 60km from a Weather Radar. Refer to Figure 1.3 below.

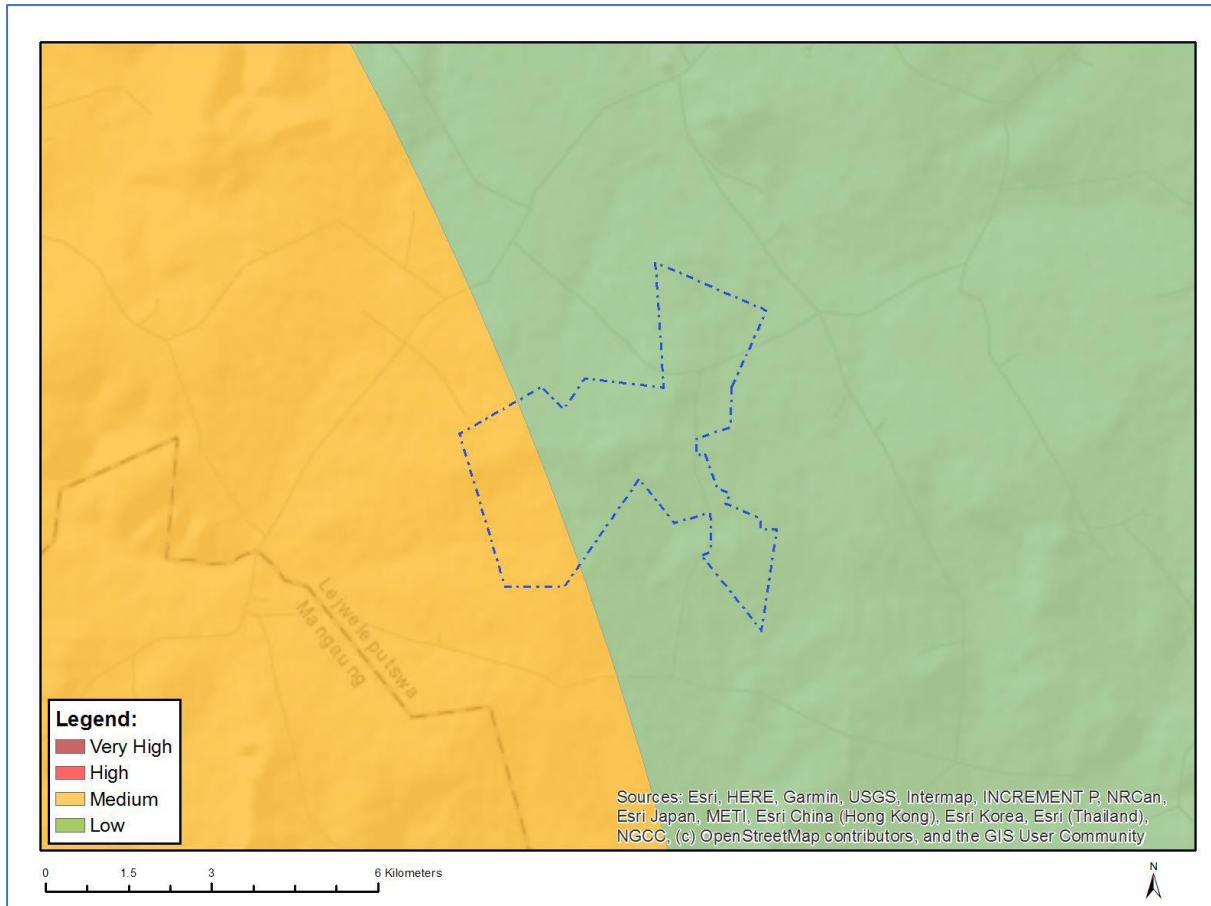


Figure 1.3: RFI theme sensitivity as indicated by the DFFE Screening Tool Report

1.3 Current/ Verified Land Use

The current land use of the property is mainly used for agricultural purposes, which includes cattle grazing. The project is located approximately 36 km north east of the of Bloemfontein. The majority of the project area of influence (PAOI) is located within an agricultural region, and the immediate area is presently used mainly for grazing and crop farming, ESKOM infrastructure, including various high voltage lines. Refer to Figures 1.4 – 1.7 for photographs of the current land uses.



Figure 1.4: Aerial view of the PAOI



Figure 1.5: General Conditions of the site





Figure 1.6: Aerial view of the general conditions of the project site



Figure 1.7: Aerial view of cattle grazing fields on site



2 SITE VERIFICATION

This section will evaluate and verify the sensitivity ratings provided by the DFFE Screening Tool Report and provide feedback from the EAP.

2.1 Civil Aviation Theme

The site sensitivity is classified as Low due to that there are no civil aviation aerodromes in close proximity to the project site.

Table 2.1: Verification of DFFE Screening Report Sensitivity Ratings for the Civil Aviation Theme

Identified Sensitivity			Comment
DFFE Report	Screening	EAP Feedback	
Low		Low	
<p>Low potential for negative impacts on the civil aviation installations. Further assessment of the potential impacts is not required.</p>			<p>The low sensitivity is agreed to by the EAP, since no civil aviation aerodromes are located in close proximity to the site. The Project Area of Influence (PAOI) consists of agricultural activities. The current land use for the development area is cattle grazing. The surrounding landscape are characterised by cattle grazing and crop production. Refer to Figures 1.4 – 1.7.</p> <p>The Civil Aviation Authority (CAA) has been identified as an I&AP, and has received the Draft Scoping report for review and commenting. No comments from the CAA have been received as part of the initial public participation process.</p>

The proposed development will not have an unacceptable negative impact on civil aviation installations based on the findings of the site visit and the existing civil aviation infrastructure present within the general area.

Although the development is for the construction of a solar power plant, the associated power lines will be adequately fitted with the necessary identifier devices and will be constructed according to applicable standards.

This assessment is considered sufficient for the civil aviation theme. There is no reason for the developments not to proceed based on the results of the assessment and no objections are made.



2.2 Defence Theme

Table 2.2: Verification of DFFE Screening Report Sensitivity Ratings for the Defence Theme

Identified Sensitivity			Comment
DFFE Report	Screening	EAP Feedback	
Low		Low	
<p>Low potential for negative impacts on the defence installations, and if there are impacts there is a high likelihood of mitigation. Further assessment of the potential impacts may not be required.</p>			<p>The site verification report confirms the low sensitivity of the site.</p> <p>The affected properties are confirmed to be used for agricultural purposes, therefore the development of Makoaneng Solar Power Plant will not have any impact on defence installations.</p> <p>The project is therefore not expected to have an impact on Defence Installations.</p>

The proposed development will not have an unacceptable negative impact on defence installations.

The EAP confirms the outcome and results for the Defence Theme for the Makoaneng Solar Power Plant. Considering the site under assessment and the surrounding defence aspects the sensitivity is confirmed as low.

This assessment is considered sufficient for the defence theme. There is no reason for the development not to proceed based on the results of the assessment and no objections are made.

2.3 Radio Frequency Interference (RFI) Theme

Table 2.3: Verification of the DFFE Screening Tool Report Sensitivity Ratings for the Radio Frequency Interference (RFI) Theme

Identified Sensitivity			Comment
DFFE Report	Screening	EAP Feedback	
Medium		Low	
<p></p>			<p>A small section of the affected property infringes into a 30km – 60km buffer from a Weather Radar system, which is rated as being of a medium sensitivity. However, the remaining extent of the</p>



		<p>property is indicated as being of a low sensitivity. The site verification report therefore disputes the medium sensitivity of the screening report and the project is located on the outer edge of the 60km buffer. The potential impact from the development will be low to negligible on any Weather Radar Systems.</p> <p>The South African Radio Astronomy Observatory (SARAO) have been consulted regarding the development of the project and the Draft Scoping Report have been circulated to SARAO for review and commenting. No comment has been received from SARAO to date.</p>
--	--	--

The EAP confirms the low RFI sensitivity for the site base on the limited infringement of the site into an area of medium sensitivity, which is a 30km – 60km buffer for an installation which is not located within the affected property proposed for development.

Furthermore, comment has been sought from the relevant telecommunications representatives during the application process for the proposed development. This includes the South African Radio Astronomy Observatory and OpenServe



3 CONCLUSION

The DFFE Screening Tool Report identified twelve (12) specialists' studies to be conducted, which includes Agricultural Impact Assessment, Landscape/Visual Impact Assessment, Archaeological and Cultural Heritage Impact Assessment, Palaeontology Impact Assessment, Terrestrial Biodiversity Impact Assessment, Aquatic Biodiversity Impact Assessment, Avian Impact Assessment, Civil Aviation Assessment, RFI Assessment, Geotechnical Assessment, Plant Species Assessment and Animal Species Assessment. The screening report identified the Defence Theme as having a low sensitivity, however no study was recommended.

The medium sensitivity ratings for the RFI theme is disputed by the site verification report and it is recommended that the sensitivity should be considered to be low based on the very limited infringement of the affected property on a medium sensitivity area. Therefore, the project will not have an unacceptable negative impact on any civil aviation installations. The Civil Aviation Authority have also been consulted as part of the Draft Scoping process, but no comment / objection has been received to date.

