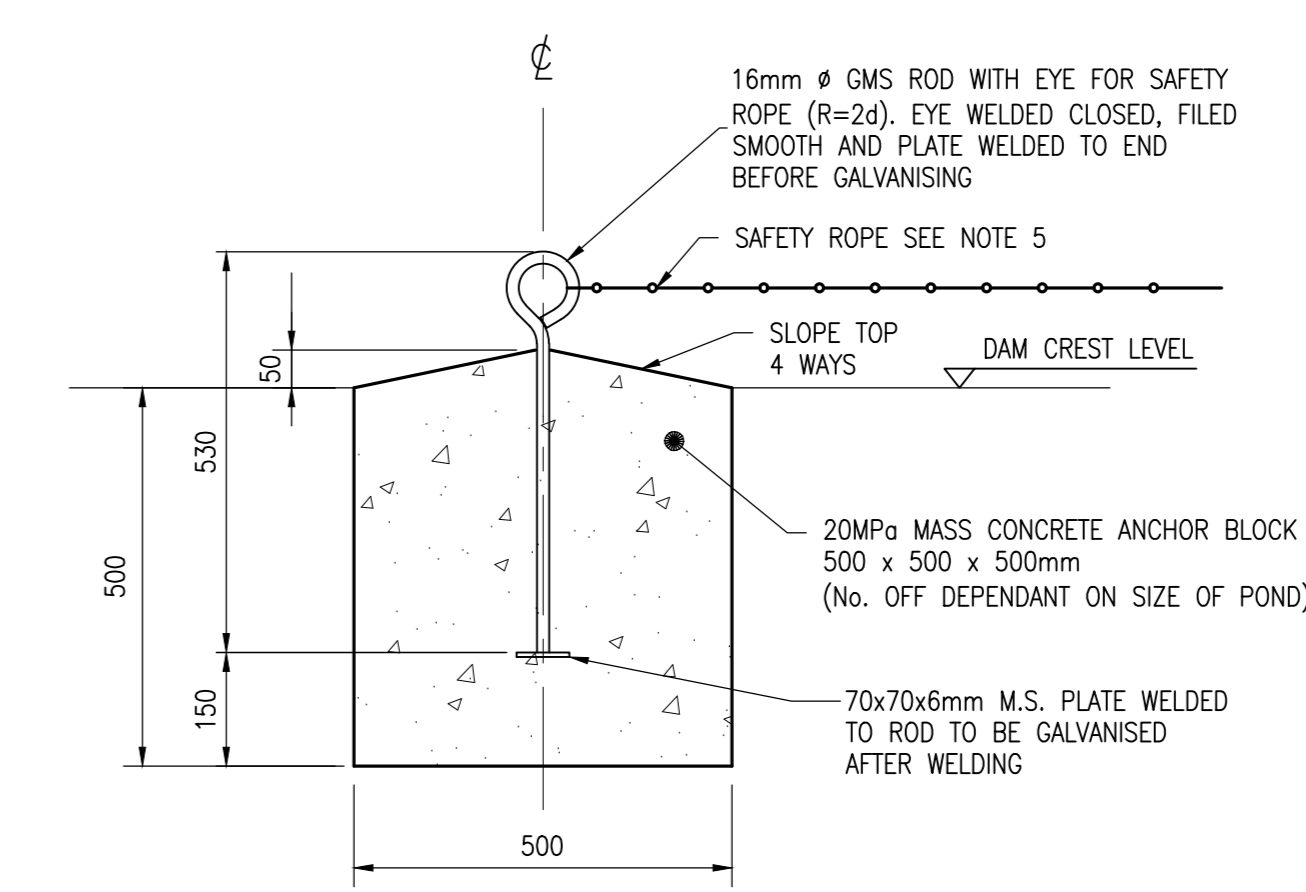


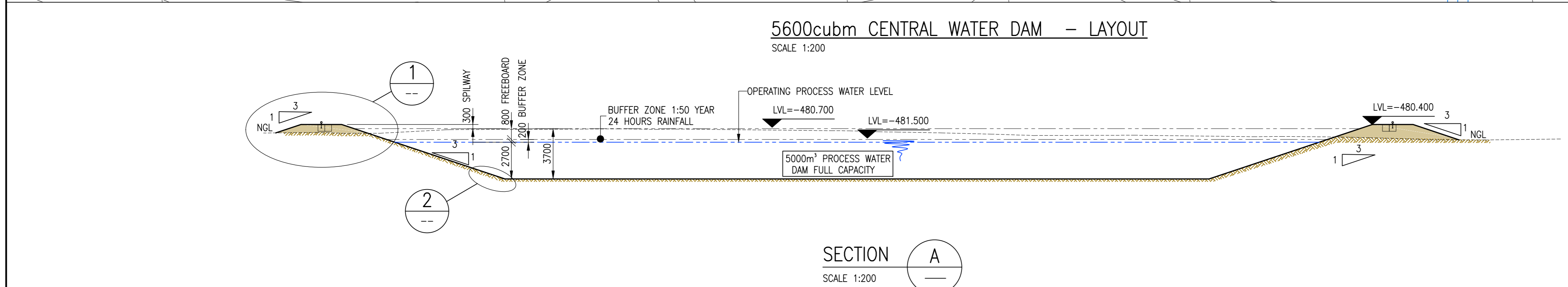
KEY PLAN
SCALE 1:7500

NOTES

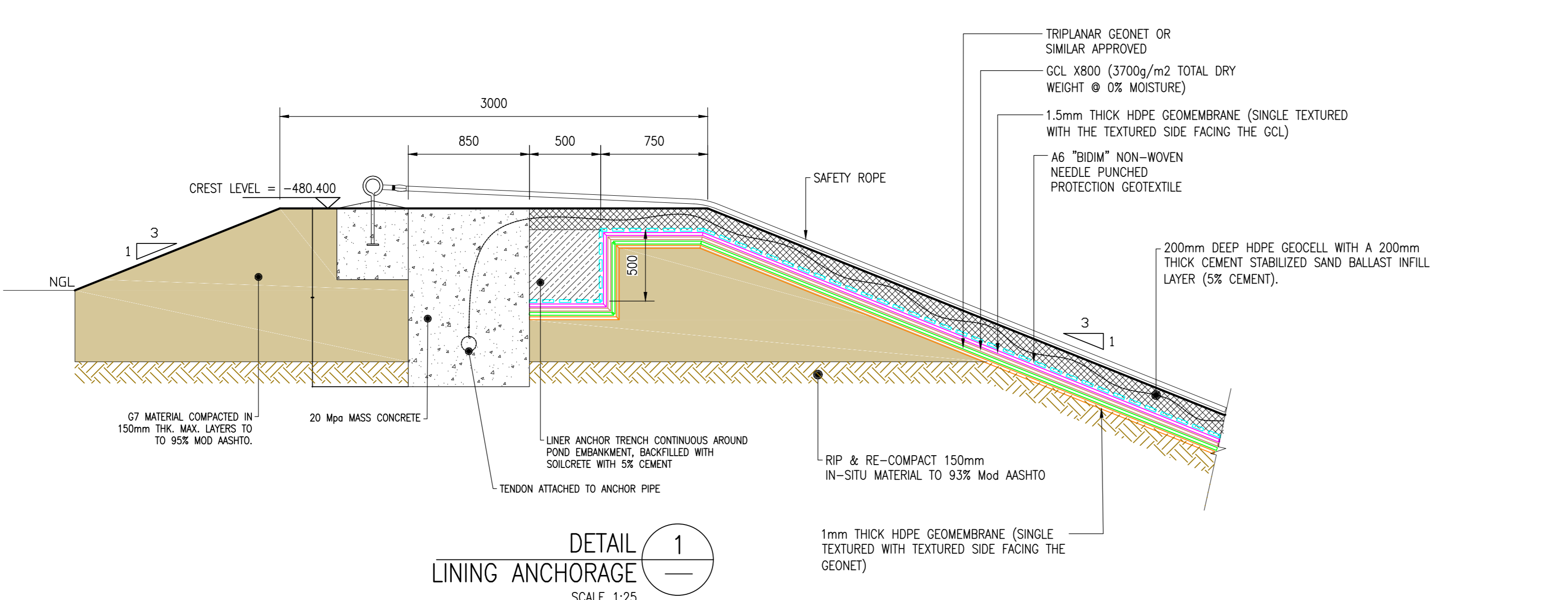
- DAM FLOOR:**
1. ENSURE ALL ORGANIC MATTER IS REMOVED TO ENGINEER'S APPROVAL IN ACCORDANCE WITH CLAUSE 5 OF SANS 1200C.
 2. TREE TAP ROOTS TO BE REMOVED ENTIRELY.
- DAM LINER:**
3. THE LINER AND UNDERLAY SHALL CONFORM TO THE FOLLOWING SPECIFICATIONS:
SANS 1526
SANS 10409
GRI 6713(a)
 - 3.1. LINER TO BE BALLASTED AGAINST UPLIFTMENT AS RECOMMENDED BY LINER SUPPLIER AND AS APPROVED BY ENGINEER.
 - 3.2. HDPE GEOCELL, 300mm CELL DEPTH, WITH CEMENT STABILIZED SAND (5% CEMENT) AS SIDE SLOPE BALLAST.
 - 3.3. GEOCELLS TO TERMINATE 1000mm FROM SLOPE TOE.
 - 3.4. 300mm THICK CEMENT STABILIZED SAND (5% CEMENT) BALLAST ON DAM FLOOR.
- SAFETY:**
4. SAFETY ROPES (KNOTTED) SPECIFICATIONS, SIZE AND INSTALLATION BY OTHERS TO ENGINEER'S APPROVAL.



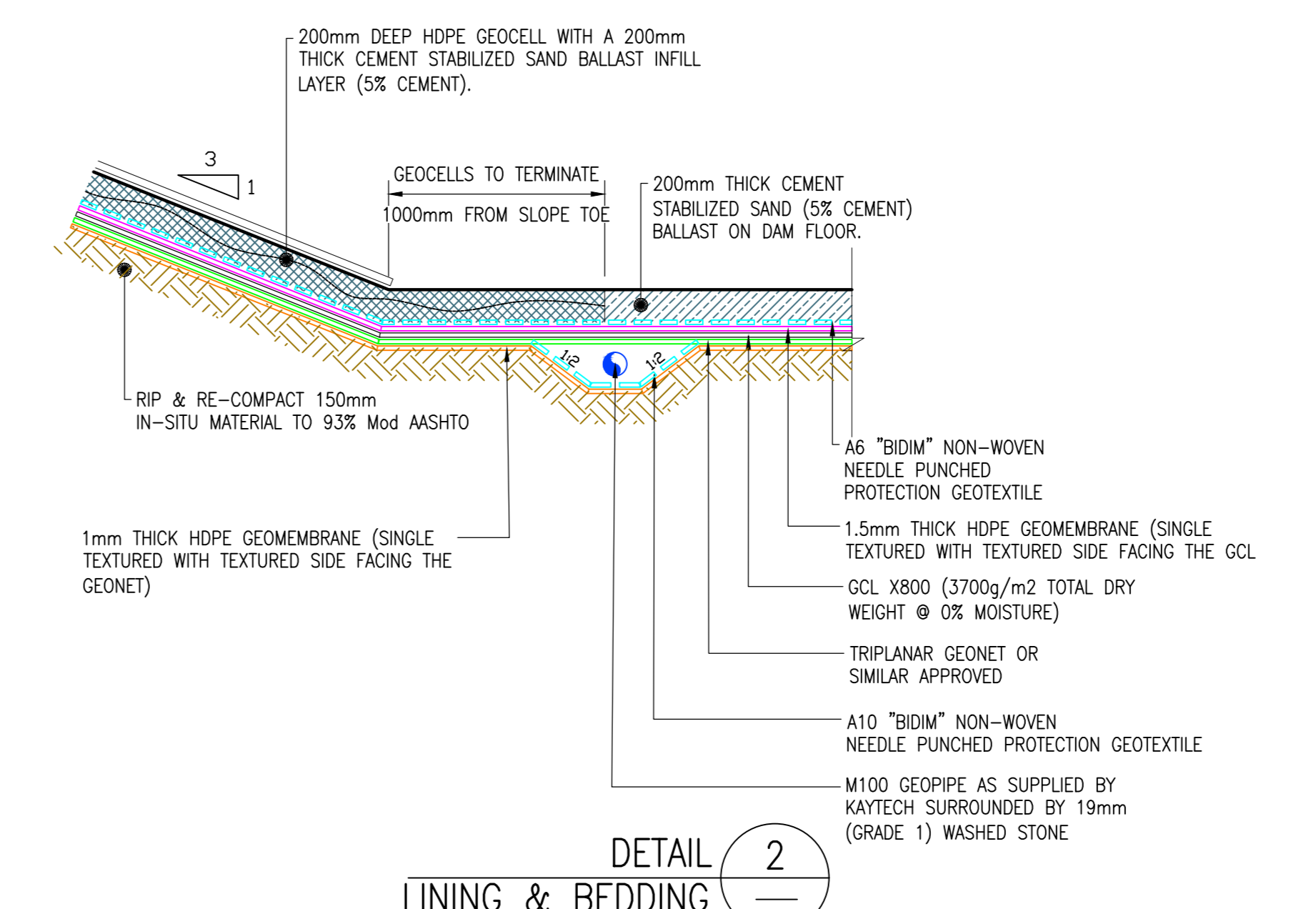
SAFETY ROPE ANCHOR DETAIL
SCALE 1:10
SAFETY ROPE ANCHOR BLOCKS TO BE PLACED AT 10m C/C ALONG THE ENTIRE DAM CREST.



SECTION A
SCALE 1:200



DETAIL 1
SCALE 1:25
LINING ANCHORAGE



DETAIL 2
SCALE 1:25
LINING & BEDDING

SQUAD CHECK			
DESIGNATION	NAME	SIGNATURE	DATE
CLIENT PROJECT MANAGER			
CLIENT PROCESS ENGINEER			
DRA PROJECT MANAGER			
DRA PROCESS ENGINEER			
DRA ELECTRICAL ENGINEER			
DRA PROJECT ENGINEER			
DRA ENGINEERING MANAGER			
DRA D.O. MANAGER			
DRA D.O. SECTION LEADER			
DRA DISCIPLINE LEAD			

ISSUED FOR SQUAD CHECK

REFERENCE DRAWINGS	DESCRIPTION	DRAWING NO.	DESCRIPTION

REV.	BY	DATE	DESCRIPTION

APPROVAL	NAME	SIGNATURE	DATE

DRA PROJECTS			DRAWING OFFICE		
APPROVAL	SIGNATURE	DATE	D.O. MANAGER	SECTION LEADER	DATE

APPROVAL	NAME	SIGNATURE	DATE

<p>DRA Minerals Plant Number 3 Springs Close Lunnburgh, 2155 Telephone: +27 11 202 8600 PO Box 5667 Rivonia, 2128 South Africa dra@global.com</p>	<p>TITLE: BEESHOEK PLANT OPTIMISATION PROJECT 80 BEESHOEK SURFACE CONTAMINATED WATER PRODUCTION 5600m³ CENTRAL WATER DAM LAYOUT & DETAILS</p> <p>PROJECT DISC: WORK PACKAGE: FILE NAME: SHEET: REVISION: SCALE: AO 04951 IH 80-YP-1 00346 1 of 1 C 1:200 U.O.S.</p>
---	---