



# APPENDIX C:

## Maps





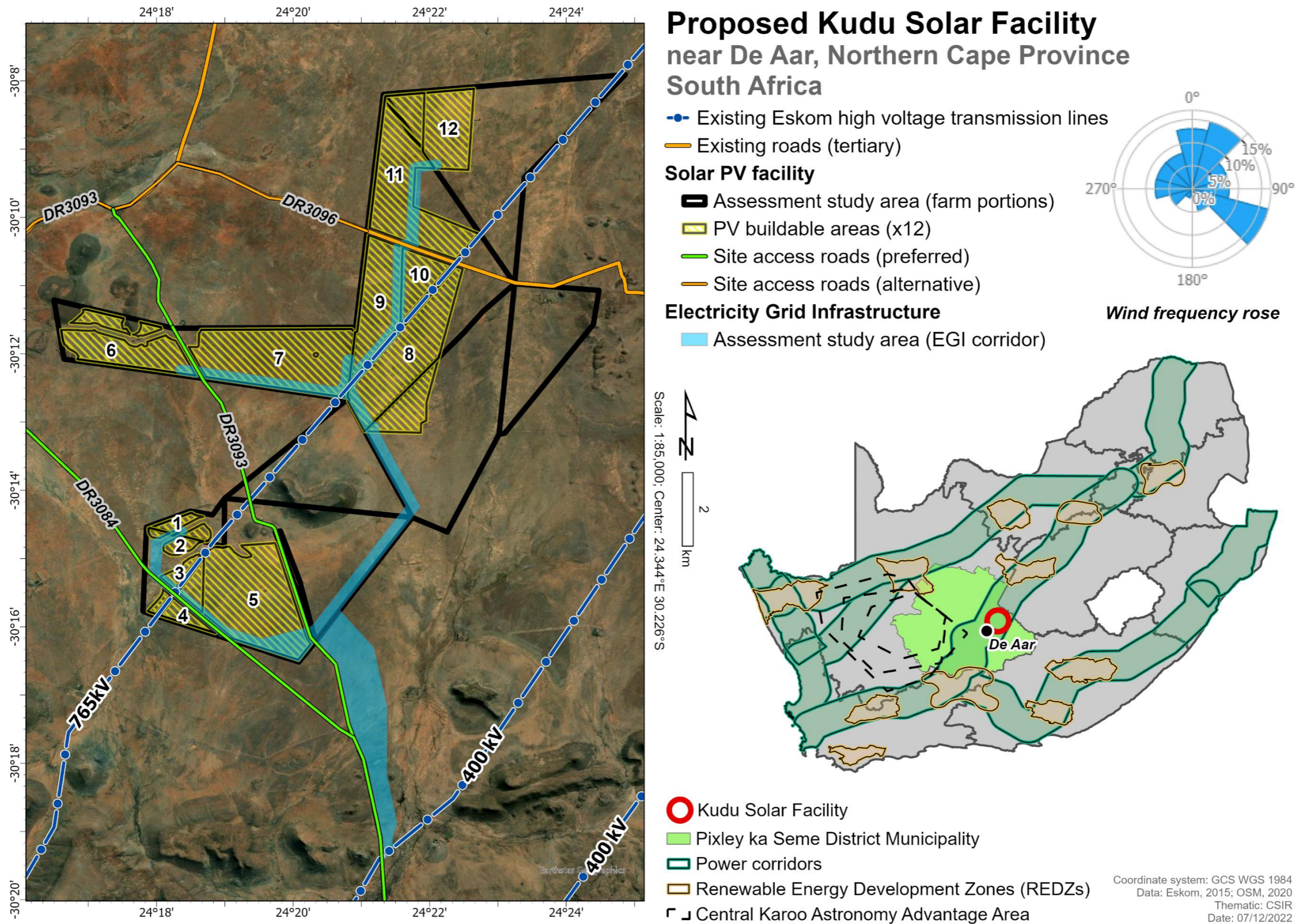
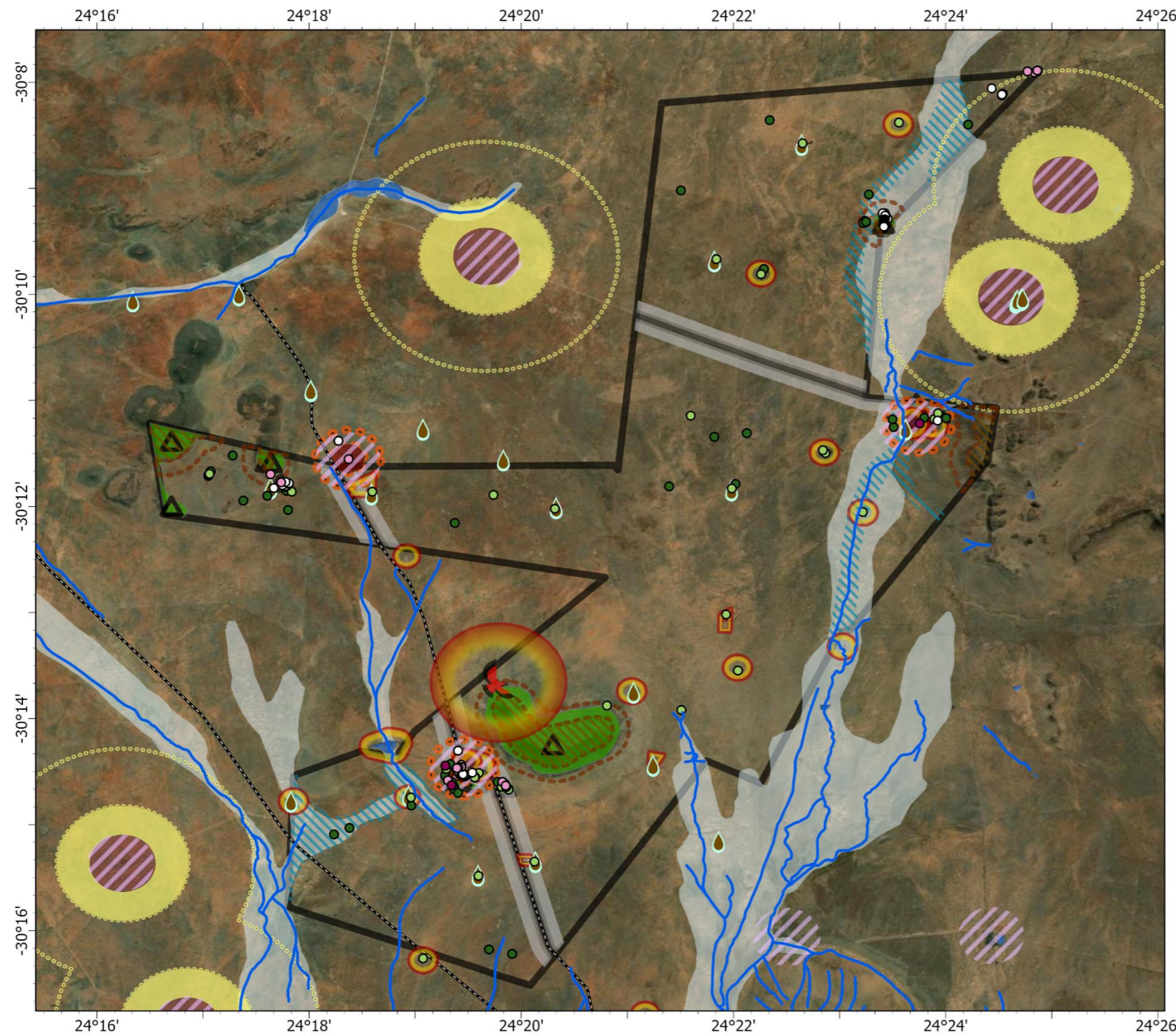


Figure A. Locality Map of the proposed Kudu Projects. Note that the EGI Projects are not part of the current application and report. The EGI Projects will be considered separately at a later stage. The EGI corridor indicated in this Figure is indicative.



# Proposed Kudu Solar PV facility (1 - 12) near De Aar, Northern Cape Province South Africa



## Combined environmental features

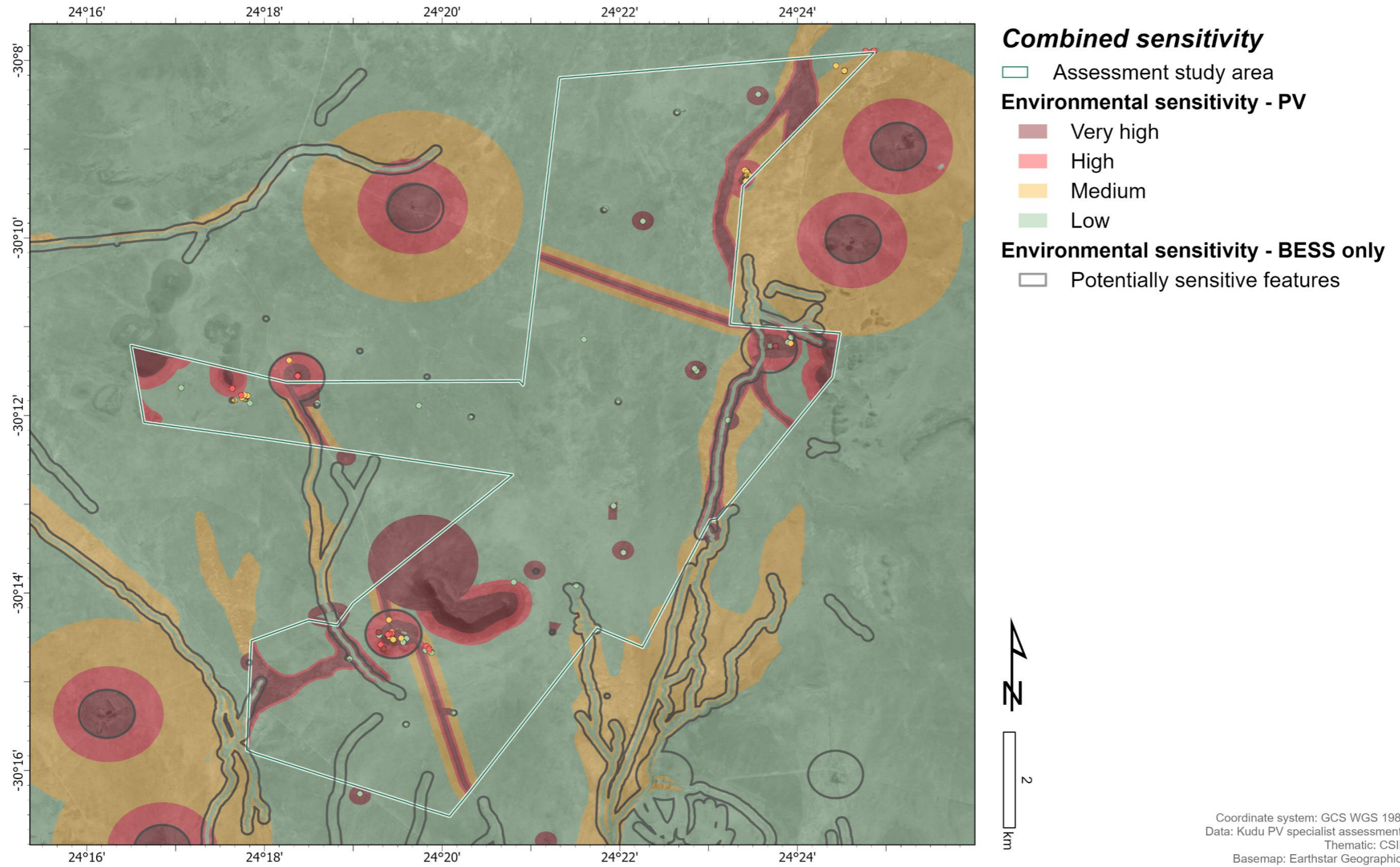
- ▣ Assessment study area
- Site access roads (preferred)
- Terrestrial ecology**
- ▲ Koppies
- Aquatic ecology**
- Watercourses (rivers, 35m; pans, 50m)
- Floodplains
- Avifauna**
- 🦅 Verreaux's eagle nest (1km)
- 📍 Waterpoint
- Visual and scenic resources**
- ▨ Drainage features (50m)
- ▨ Topographic features
- ▨ Topographic features (250m)
- Farmsteads (inside study area, 250m)
- Farmsteads (inside study area, 500m)
- Farmsteads (outside study area, 500m)
- Farmsteads (outside study area, 1km)
- Farmsteads (outside study area, 2km)
- Roads (50m)
- Roads (100m)
- Roads (250m)
- Safety, Health and Environment Risk**
- ▨ Farmsteads (500m, BESS only)
- Groundwater**
- 📍 Boreholes (50m, BESS only)
- Heritage features**
- Grading: IIIA
- Grading: IIIB
- Grading: GPA
- Grading: GPB
- Grading: GPC

Coordinate system: GCS WGS 1984  
Data: Kudu PV specialist assessments  
Thematic: CSIR  
Basemap: Earthstar Geographics  
Date: 06/12/2022

Preliminary combined environmental feature map for the proposed project study area based on scoping level specialist inputs.



# Proposed Kudu Solar PV facility (1 - 12) near De Aar, Northern Cape Province South Africa



Preliminary combined environmental sensitivity map for the proposed project study area based on scoping level specialist inputs.