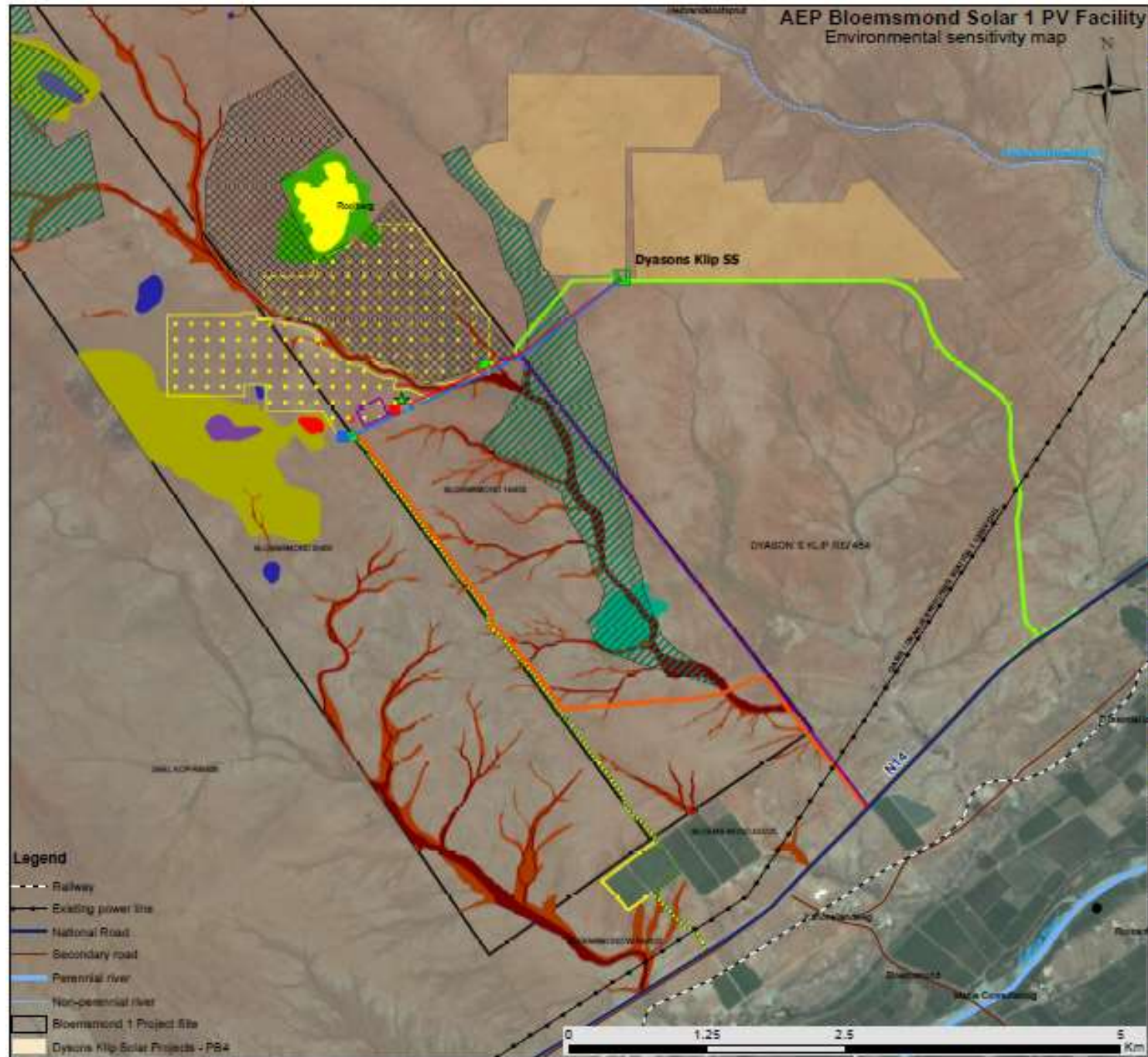


AEP Bloemsmond Solar 1 PV Facility
Environmental sensitivity map



Layout Plan:

- Preferred development footprint
- Alternative development footprint
- Substation Alternative 1 (Preferred)
- Substation Alternative 2 (Alternative)
- Power Line Alternative 1 (Preferred)
- Power Line Alternative 2 (Alternative)
- Buildings
- Site access
- Preferred Access Road 1
- Preferred Access Road 2
- Alternative Access Road 1
- Alternative Access Road 2
- Alternative Access Road 3
- Laydown area

Environmental sensitivity:

- Potential Visual Receptors
- Heritage feature with a 20m buffer
- High avifauna sensitivity
- Ephemeral drainage lines with buffer (very high)
- Quartz Outcrop (very high)
- Ephemeral drainage lines with buffer (high)
- Hill (high)
- Pan (high)
- Rocky Hill (high)
- Wooded area (high)
- Hill buffer (medium)
- Gravel Hills (medium)

Scale A3 1:33 523
Projection: LO21 WGS 1984
Map ref #: Bloemsmond1 Env Sensitivity Map_06.11.15

Legend

- Railway
- Existing power line
- National Road
- Secondary road
- Perennial river
- Non-perennial river
- Bloemsmond 1 Project Site
- Dyasons Klip Solar Projects - PS4

