

**SCREENING REPORT FOR AN ENVIRONMENTAL AUTHORIZATION AS
REQUIRED BY THE 2014 EIA REGULATIONS – PROPOSED SITE
ENVIRONMENTAL SENSITIVITY**

EIA Reference number: 41103965

Project name: Eskom Komati PV and BESS

Project title: Eskom Komati PV and BESS EIA

Date screening report generated: 23/05/2022 13:39:51

Applicant: Eskom Holdings SOC (Ltd)

Compiler: Megan Govender

Compiler signature:
.....

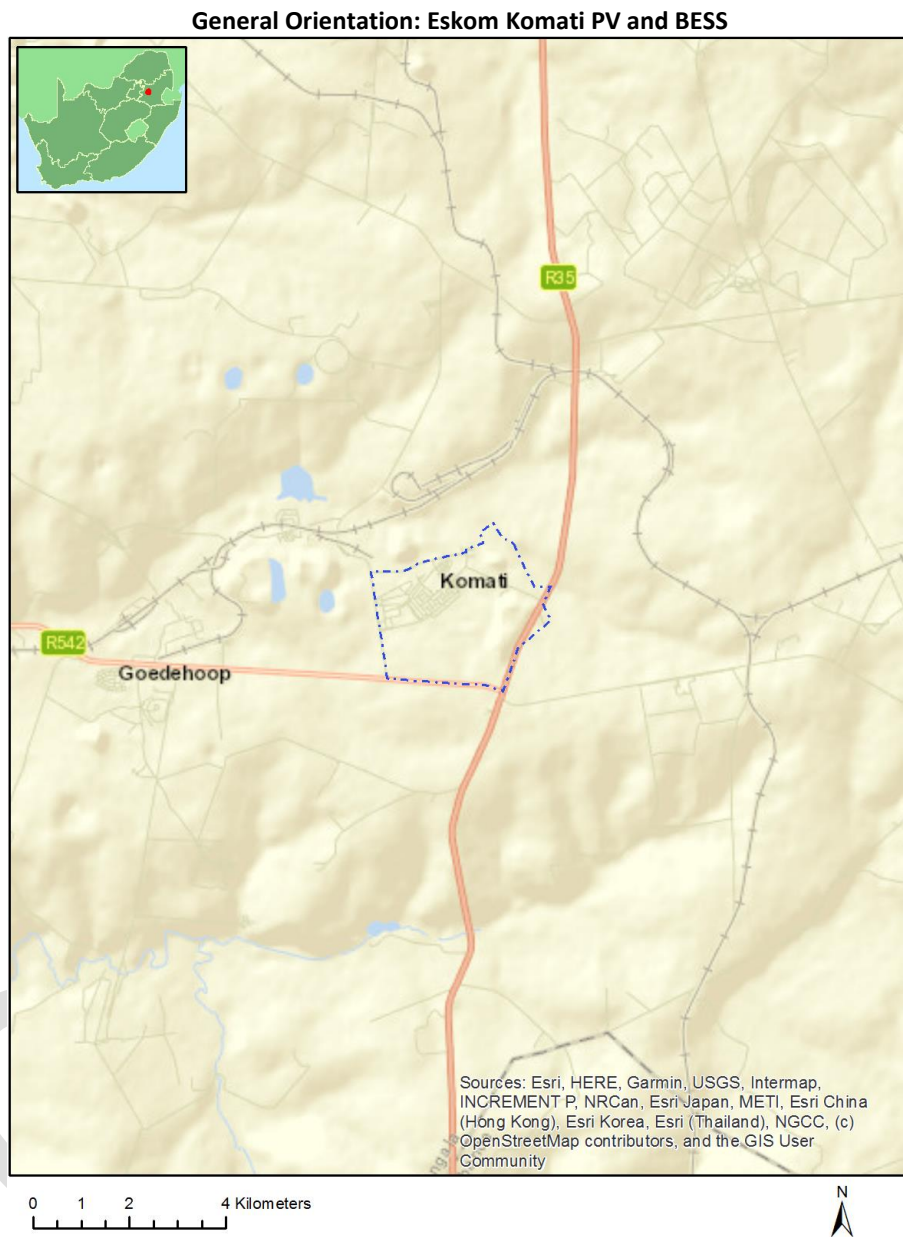
Application Category: Utilities Infrastructure|Electricity|Generation|Renewable|Solar|PV

Table of Contents

Proposed Project Location	3
Orientation map 1: General location	3
Map of proposed site and relevant area(s)	4
Cadastral details of the proposed site	4
Wind and Solar developments with an approved Environmental Authorisation or applications under consideration within 30 km of the proposed area	12
Environmental Management Frameworks relevant to the application	13
Environmental screening results and assessment outcomes	13
Relevant development incentives, restrictions, exclusions or prohibitions	13
Map indicating proposed development footprint within applicable development incentive, restriction, exclusion or prohibition zones	15
Proposed Development Area Environmental Sensitivity	15
Specialist assessments identified	16
Results of the environmental sensitivity of the proposed area	18
MAP OF RELATIVE AGRICULTURE THEME SENSITIVITY	18
MAP OF RELATIVE ANIMAL SPECIES THEME SENSITIVITY	19
MAP OF RELATIVE AQUATIC BIODIVERSITY THEME SENSITIVITY	20
MAP OF RELATIVE ARCHAEOLOGICAL AND CULTURAL HERITAGE THEME SENSITIVITY	21
MAP OF RELATIVE AVIAN THEME SENSITIVITY	22
MAP OF RELATIVE CIVIL AVIATION (SOLAR PV) THEME SENSITIVITY	23
MAP OF RELATIVE DEFENCE THEME SENSITIVITY	24
MAP OF RELATIVE LANDSCAPE (SOLAR) THEME SENSITIVITY	25
MAP OF RELATIVE PALEONTOLOGY THEME SENSITIVITY	26
MAP OF RELATIVE PLANT SPECIES THEME SENSITIVITY	27
MAP OF RELATIVE RFI THEME SENSITIVITY	28
MAP OF RELATIVE TERRESTRIAL BIODIVERSITY THEME SENSITIVITY	29

Proposed Project Location

Orientation map 1: General location



Map of proposed site and relevant area(s)



Cadastral details of the proposed site

Property details:

No	Farm Name	Farm/ Erf No	Portion	Latitude	Longitude	Property Type
1	KOMATI	2	0	26°5'39.73S	29°27'27.08E	Erven
2	KOMATI	17	0	26°5'35.65S	29°27'32.47E	Erven
3	KOMATI	24	0	26°5'40.64S	29°27'28.3E	Erven
4	KOMATI	27	0	26°5'42.89S	29°27'26.23E	Erven
5	KOMATI	31	0	26°5'45.88S	29°27'23.47E	Erven
6	KOMATI	38	0	26°6'0.76S	29°27'31.39E	Erven
7	KOMATI	42	0	26°5'58.89S	29°27'27.48E	Erven
8	KOMATI	53	0	26°5'55.34S	29°27'27.72E	Erven
9	KOMATI	60	0	26°5'58.94S	29°27'29.69E	Erven
10	KOMATI	79	0	26°5'53.86S	29°27'29.64E	Erven
11	KOMATI	117	0	26°5'47.59S	29°27'26.08E	Erven
12	KOMATI	137	0	26°5'47.62S	29°27'32.12E	Erven
13	KOMATI	138	0	26°5'48.2S	29°27'31.37E	Erven
14	KOMATI	139	0	26°5'48.78S	29°27'30.61E	Erven
15	KOMATI	143	0	26°5'48.02S	29°27'34.09E	Erven
16	KOMATI	156	0	26°5'46.27S	29°27'37.62E	Erven
17	KOMATI	158	0	26°5'35S	29°27'37.1E	Erven
18	KOMATI	160	0	26°5'34.07S	29°27'42.89E	Erven
19	KOMATI	161	0	26°5'35.83S	29°27'43.74E	Erven
20	KOMATI	180	0	26°5'28.8S	29°27'43.26E	Erven
21	KOMATI	188	0	26°5'27.15S	29°27'47.53E	Erven
22	KOMATI	202	0	26°5'27.15S	29°27'48.8E	Erven
23	KOMATI	215	0	26°5'37.48S	29°27'53.87E	Erven
24	KOMATI	221	0	26°5'40.53S	29°27'55.59E	Erven
25	KOMATI	233	0	26°5'40.8S	29°27'54.11E	Erven
26	KOMATI	239	0	26°5'39.78S	29°27'52E	Erven
27	KOMATI	244	0	26°5'41.88S	29°27'55.77E	Erven

28	KOMATI	246	0	26°5'40.84S	29°27'56.88E	Erven
29	KOMATI	254	0	26°5'42.29S	29°27'52.36E	Erven
30	KOMATI	1	0	26°5'40.49S	29°27'26.4E	Erven
31	KOMATI	5	0	26°5'37.43S	29°27'27.83E	Erven
32	KOMATI	10	0	26°5'34.39S	29°27'30.39E	Erven
33	KOMATI	12	0	26°5'33.39S	29°27'32.17E	Erven
34	KOMATI	15	0	26°5'34.13S	29°27'34.24E	Erven
35	KOMATI	20	0	26°5'37.94S	29°27'30.54E	Erven
36	KOMATI	26	0	26°5'42.13S	29°27'26.92E	Erven
37	KOMATI	37	0	26°6'0.12S	29°27'32.42E	Erven
38	KOMATI	39	0	26°6'1.29S	29°27'29.6E	Erven
39	KOMATI	47	0	26°5'50.87S	29°27'23.54E	Erven
40	KOMATI	56	0	26°5'57.57S	29°27'29.81E	Erven
41	KOMATI	59	0	26°5'59.69S	29°27'30.39E	Erven
42	KOMATI	64	0	26°5'55.97S	29°27'26.89E	Erven
43	KOMATI	96	0	26°5'50.05S	29°27'24.6E	Erven
44	KOMATI	98	0	26°5'46.9S	29°27'25.31E	Erven
45	KOMATI	99	0	26°5'46.18S	29°27'25.94E	Erven
46	KOMATI	107	0	26°5'40.73S	29°27'30.94E	Erven
47	KOMATI	108	0	26°5'41.37S	29°27'31.77E	Erven
48	KOMATI	157	0	26°5'38.78S	29°27'33.89E	Erven
49	KOMATI	170	0	26°5'27.81S	29°27'43.3E	Erven
50	KOMATI	174	0	26°5'29.5S	29°27'45.59E	Erven
51	KOMATI	175	0	26°5'29.95S	29°27'46.17E	Erven
52	KOMATI	181	0	26°5'28.37S	29°27'42.67E	Erven
53	KOMATI	183	0	26°5'27.07S	29°27'45.09E	Erven
54	KOMATI	186	0	26°5'26.44S	29°27'47.2E	Erven
55	KOMATI	189	0	26°5'27.41S	29°27'46.78E	Erven
56	KOMATI	194	0	26°5'29.07S	29°27'47E	Erven
57	KOMATI	200	0	26°5'28.4S	29°27'48.53E	Erven
58	KOMATI	203	0	26°5'26.49S	29°27'48.94E	Erven
59	KOMATI	3	0	26°5'38.98S	29°27'27.78E	Erven
60	KOMATI	32	0	26°6'0.76S	29°27'27.39E	Erven
61	KOMATI	49	0	26°5'52.36S	29°27'24.93E	Erven
62	KOMATI	51	0	26°5'53.86S	29°27'26.32E	Erven
63	KOMATI	78	0	26°5'53.12S	29°27'28.94E	Erven
64	KOMATI	93	0	26°5'52.28S	29°27'26.7E	Erven
65	KOMATI	109	0	26°5'42.05S	29°27'31.16E	Erven
66	KOMATI	120	0	26°5'49.48S	29°27'29.18E	Erven
67	KOMATI	123	0	26°5'51.52S	29°27'31.09E	Erven
68	KOMATI	126	0	26°5'50.8S	29°27'28.99E	Erven
69	KOMATI	128	0	26°5'49.44S	29°27'27.72E	Erven
70	KOMATI	131	0	26°5'47.44S	29°27'30.66E	Erven
71	KOMATI	141	0	26°5'49.25S	29°27'32.48E	Erven
72	KOMATI	142	0	26°5'48.64S	29°27'33.28E	Erven
73	KOMATI	145	0	26°5'47.57S	29°27'35.45E	Erven
74	KOMATI	151	0	26°5'43.01S	29°27'32.85E	Erven
75	KOMATI	153	0	26°5'44.69S	29°27'35.1E	Erven
76	KOMATI	163	0	26°5'39.68S	29°27'46.41E	Erven
77	KOMATI	164	0	26°5'38.64S	29°27'45.57E	Erven
78	KOMATI	167	0	26°5'44.23S	29°27'39.31E	Erven
79	KOMATI	173	0	26°5'29.06S	29°27'45.01E	Erven
80	KOMATI	219	0	26°5'39.52S	29°27'55.78E	Erven
81	KOMATI	222	0	26°5'40.03S	29°27'55.11E	Erven
82	KOMATI	224	0	26°5'39.01S	29°27'54.15E	Erven
83	KOMATI	225	0	26°5'38.5S	29°27'53.67E	Erven
84	KOMATI	234	0	26°5'41.31S	29°27'54.58E	Erven
85	KOMATI	247	0	26°5'41.46S	29°27'57.04E	Erven
86	KOMATI	252	0	26°5'41.09S	29°27'51.23E	Erven
87	KOMATI	261	0	26°5'42.93S	29°27'51.52E	Erven

88	KOMATI	16	0	26°5'34.93S	29°27'33.25E	Erven
89	KOMATI	21	0	26°5'31.67S	29°27'36.12E	Erven
90	KOMATI	22	0	26°5'39.18S	29°27'29.64E	Erven
91	KOMATI	23	0	26°5'39.92S	29°27'28.95E	Erven
92	KOMATI	30	0	26°5'45.14S	29°27'24.16E	Erven
93	KOMATI	33	0	26°6'1.68S	29°27'28.1E	Erven
94	KOMATI	44	0	26°5'57.36S	29°27'26.14E	Erven
95	KOMATI	58	0	26°5'59.05S	29°27'31.21E	Erven
96	KOMATI	68	0	26°5'52.98S	29°27'24.13E	Erven
97	KOMATI	70	0	26°5'51.46S	29°27'22.77E	Erven
98	KOMATI	71	0	26°5'50.7S	29°27'22.1E	Erven
99	KOMATI	86	0	26°5'57.38S	29°27'31.59E	Erven
100	KOMATI	88	0	26°5'55.93S	29°27'30.19E	Erven
101	KOMATI	89	0	26°5'55.21S	29°27'29.54E	Erven
102	KOMATI	90	0	26°5'54.52S	29°27'28.79E	Erven
103	KOMATI	92	0	26°5'53.03S	29°27'27.39E	Erven
104	KOMATI	101	0	26°5'44.81S	29°27'27.19E	Erven
105	KOMATI	105	0	26°5'42.09S	29°27'29.69E	Erven
106	KOMATI	106	0	26°5'41.41S	29°27'30.32E	Erven
107	KOMATI	110	0	26°5'42.73S	29°27'30.53E	Erven
108	KOMATI	140	0	26°5'49.87S	29°27'31.68E	Erven
109	KOMATI	148	0	26°5'49.32S	29°27'33.94E	Erven
110	KOMATI	154	0	26°5'45.57S	29°27'36.22E	Erven
111	KOMATI	165	0	26°5'41.17S	29°27'44.5E	Erven
112	KOMATI	169	0	26°5'30.52S	29°27'42.53E	Erven
113	KOMATI	172	0	26°5'28.63S	29°27'44.42E	Erven
114	KOMATI	176	0	26°5'30.55S	29°27'45.62E	Erven
115	KOMATI	178	0	26°5'29.67S	29°27'44.44E	Erven
116	KOMATI	197	0	26°5'28.6S	29°27'49.38E	Erven
117	KOMATI	4	0	26°5'38.19S	29°27'28.47E	Erven
118	KOMATI	28	0	26°5'43.64S	29°27'25.54E	Erven
119	KOMATI	48	0	26°5'51.61S	29°27'24.24E	Erven
120	KOMATI	76	0	26°5'51.63S	29°27'27.54E	Erven
121	KOMATI	85	0	26°5'58.07S	29°27'32.29E	Erven
122	KOMATI	94	0	26°5'51.54S	29°27'26E	Erven
123	KOMATI	100	0	26°5'45.49S	29°27'26.56E	Erven
124	KOMATI	102	0	26°5'44.13S	29°27'27.82E	Erven
125	KOMATI	113	0	26°5'44.77S	29°27'28.66E	Erven
126	KOMATI	127	0	26°5'50.12S	29°27'28.34E	Erven
127	KOMATI	134	0	26°5'45.72S	29°27'32.93E	Erven
128	KOMATI	147	0	26°5'48.71S	29°27'34.73E	Erven
129	KOMATI	191	0	26°5'27.82S	29°27'45.23E	Erven
130	KOMATI	210	0	26°5'30.85S	29°27'47E	Erven
131	KOMATI	212	0	26°5'33.65S	29°27'49.02E	Erven
132	KOMATI	214	0	26°5'36.99S	29°27'53.4E	Erven
133	KOMATI	229	0	26°5'38.76S	29°27'52.2E	Erven
134	KOMATI	230	0	26°5'39.26S	29°27'52.68E	Erven
135	KOMATI	231	0	26°5'39.77S	29°27'53.16E	Erven
136	KOMATI	235	0	26°5'41.82S	29°27'53.93E	Erven
137	KOMATI	237	0	26°5'40.8S	29°27'52.96E	Erven
138	KOMATI	238	0	26°5'40.29S	29°27'52.48E	Erven
139	KOMATI	248	0	26°5'42.04S	29°27'56.82E	Erven
140	KOMATI	257	0	26°5'44.11S	29°27'54.06E	Erven
141	KOMATI	262	0	26°5'42.33S	29°27'50.95E	Erven
142	KOMATI	263	0	26°5'41.73S	29°27'50.4E	Erven
143	KOMATI	267	0	26°5'40.23S	29°27'48.27E	Erven
144	KOMATI	274	0	26°5'42.01S	29°27'47.64E	Erven
145	KOMATI	284	0	26°5'45.05S	29°27'45.88E	Erven
146	KOMATI	11	0	26°5'33.93S	29°27'31.31E	Erven
147	KOMATI	14	0	26°5'32.98S	29°27'34.32E	Erven

148	KOMATI	35	0	26°5'58.49S	29°27'33.99E	Erven
149	KOMATI	43	0	26°5'58.13S	29°27'26.81E	Erven
150	KOMATI	46	0	26°5'50.13S	29°27'22.85E	Erven
151	KOMATI	52	0	26°5'54.6S	29°27'27.02E	Erven
152	KOMATI	61	0	26°5'58.2S	29°27'28.99E	Erven
153	KOMATI	62	0	26°5'57.46S	29°27'28.29E	Erven
154	KOMATI	65	0	26°5'55.23S	29°27'26.19E	Erven
155	KOMATI	66	0	26°5'54.49S	29°27'25.5E	Erven
156	KOMATI	67	0	26°5'53.74S	29°27'24.81E	Erven
157	KOMATI	74	0	26°5'50.14S	29°27'26.15E	Erven
158	KOMATI	95	0	26°5'50.79S	29°27'25.3E	Erven
159	KOMATI	111	0	26°5'43.43S	29°27'29.89E	Erven
160	KOMATI	116	0	26°5'46.8S	29°27'26.79E	Erven
161	KOMATI	122	0	26°5'50.83S	29°27'30.46E	Erven
162	KOMATI	133	0	26°5'46.29S	29°27'32.17E	Erven
163	KOMATI	146	0	26°5'48.14S	29°27'35.53E	Erven
164	KOMATI	152	0	26°5'43.9S	29°27'34.05E	Erven
165	KOMATI	159	0	26°5'33S	29°27'39.84E	Erven
166	KOMATI	177	0	26°5'30.11S	29°27'45.03E	Erven
167	KOMATI	179	0	26°5'29.24S	29°27'43.85E	Erven
168	KOMATI	182	0	26°5'27.25S	29°27'44.41E	Erven
169	KOMATI	187	0	26°5'26.24S	29°27'47.84E	Erven
170	KOMATI	196	0	26°5'27.94S	29°27'49.52E	Erven
171	KOMATI	209	0	26°5'31.33S	29°27'46.56E	Erven
172	KOMATI	211	0	26°5'30.33S	29°27'47.46E	Erven
173	KOMATI	228	0	26°5'38.26S	29°27'51.72E	Erven
174	KOMATI	232	0	26°5'40.29S	29°27'53.63E	Erven
175	KOMATI	241	0	26°5'38.76S	29°27'51.06E	Erven
176	KOMATI	7	0	26°5'35.71S	29°27'26.86E	Erven
177	KOMATI	8	0	26°5'35.17S	29°27'28.39E	Erven
178	KOMATI	13	0	26°5'32.69S	29°27'33.2E	Erven
179	KOMATI	18	0	26°5'36.35S	29°27'31.84E	Erven
180	KOMATI	36	0	26°5'59.4S	29°27'33.4E	Erven
181	KOMATI	40	0	26°6'0.43S	29°27'28.83E	Erven
182	KOMATI	55	0	26°5'56.83S	29°27'29.12E	Erven
183	KOMATI	57	0	26°5'58.31S	29°27'30.51E	Erven
184	KOMATI	69	0	26°5'52.21S	29°27'23.45E	Erven
185	KOMATI	72	0	26°5'48.66S	29°27'24.75E	Erven
186	KOMATI	87	0	26°5'56.67S	29°27'30.89E	Erven
187	KOMATI	91	0	26°5'53.77S	29°27'28.09E	Erven
188	KOMATI	97	0	26°5'49.31S	29°27'23.9E	Erven
189	KOMATI	103	0	26°5'43.46S	29°27'28.43E	Erven
190	KOMATI	104	0	26°5'42.79S	29°27'29.06E	Erven
191	KOMATI	115	0	26°5'46.12S	29°27'27.41E	Erven
192	KOMATI	119	0	26°5'48.8S	29°27'28.54E	Erven
193	KOMATI	121	0	26°5'50.15S	29°27'29.82E	Erven
194	KOMATI	125	0	26°5'51.48S	29°27'29.62E	Erven
195	KOMATI	130	0	26°5'48.02S	29°27'29.91E	Erven
196	KOMATI	150	0	26°5'50.55S	29°27'32.33E	Erven
197	KOMATI	155	0	26°5'46.98S	29°27'36.7E	Erven
198	KOMATI	166	0	26°5'42.77S	29°27'42.32E	Erven
199	KOMATI	171	0	26°5'28.2S	29°27'43.84E	Erven
200	KOMATI	184	0	26°5'26.88S	29°27'45.8E	Erven
201	KOMATI	193	0	26°5'28.42S	29°27'47.27E	Erven
202	KOMATI	195	0	26°5'27.3S	29°27'49.65E	Erven
203	KOMATI	198	0	26°5'29.25S	29°27'49.24E	Erven
204	KOMATI	205	0	26°5'30.26S	29°27'48.7E	Erven
205	KOMATI	255	0	26°5'42.89S	29°27'52.93E	Erven
206	KOMATI	260	0	26°5'43.53S	29°27'52.09E	Erven
207	KOMATI	266	0	26°5'40.75S	29°27'47.59E	Erven

208	KOMATI	268	0	26°5'39.72S	29°27'48.93E	Erven
209	KOMATI	271	0	26°5'40.48S	29°27'49.65E	Erven
210	KOMATI	278	0	26°5'43.8S	29°27'46.15E	Erven
211	KOMATI	279	0	26°5'44.41S	29°27'46.72E	Erven
212	KOMATI	282	0	26°5'46.25S	29°27'47.02E	Erven
213	KOMATI	283	0	26°5'45.66S	29°27'46.45E	Erven
214	KOMATI	293	0	26°5'46.75S	29°27'43.81E	Erven
215	KOMATI	297	0	26°5'47.46S	29°27'47.84E	Erven
216	KOMATI	302	0	26°5'44.83S	29°27'51.27E	Erven
217	KOMATI	304	0	26°5'46.11S	29°27'51.3E	Erven
218	KOMATI	321	0	26°5'49.61S	29°27'42.82E	Erven
219	KOMATI	335	0	26°5'45.99S	29°27'42.44E	Erven
220	KOMATI	344	0	26°5'50.34S	29°27'37.64E	Erven
221	KOMATI	360	0	26°5'51.49S	29°27'35.24E	Erven
222	KOMATI	366	0	26°5'54.43S	29°27'33.83E	Erven
223	KOMATI	396	0	26°5'53.84S	29°27'41.22E	Erven
224	KOMATI	419	0	26°5'57.95S	29°27'40.27E	Erven
225	KOMATI	421	0	26°5'59.2S	29°27'38.63E	Erven
226	KOMATI	429	0	26°5'47.5S	29°27'52.16E	Erven
227	KOMATI	454	5	26°5'53.1S	29°27'36.84E	Erven
228	KOMATI	454	7	26°5'53.95S	29°27'36.84E	Erven
229	KOMATI	264	0	26°5'41.77S	29°27'46.26E	Erven
230	KOMATI	291	0	26°5'47.91S	29°27'44.9E	Erven
231	KOMATI	305	0	26°5'46.63S	29°27'50.61E	Erven
232	KOMATI	313	0	26°5'48.35S	29°27'43.1E	Erven
233	KOMATI	328	0	26°5'46.26S	29°27'40.4E	Erven
234	KOMATI	345	0	26°5'50.94S	29°27'38.2E	Erven
235	KOMATI	368	0	26°5'55.63S	29°27'34.97E	Erven
236	KOMATI	385	0	26°5'55.19S	29°27'37.78E	Erven
237	KOMATI	392	0	26°5'51.52S	29°27'42.57E	Erven
238	KOMATI	397	0	26°5'54.37S	29°27'40.54E	Erven
239	KOMATI	398	0	26°5'54.89S	29°27'39.85E	Erven
240	KOMATI	400	0	26°5'55.94S	29°27'38.48E	Erven
241	KOMATI	409	0	26°5'54.01S	29°27'43.65E	Erven
242	KOMATI	411	0	26°5'52.76S	29°27'45.3E	Erven
243	KOMATI	412	0	26°5'53.53S	29°27'46.04E	Erven
244	KOMATI	425	0	26°5'50.02S	29°27'48.87E	Erven
245	KOMATI	427	0	26°5'48.75S	29°27'50.51E	Erven
246	KOMATI	428	0	26°5'48.13S	29°27'51.34E	Erven
247	KOMATI	433	0	26°5'44.98S	29°27'55.45E	Erven
248	KOMATI	436	0	26°5'47.64S	29°27'53.72E	Erven
249	KOMATI	441	0	26°5'50.8S	29°27'49.61E	Erven
250	KOMATI	454	6	26°5'53.69S	29°27'37.38E	Erven
251	KOMATI	454	8	26°5'54.27S	29°27'36.43E	Erven
252	KOMATI	213	0	26°5'36.74S	29°27'49.76E	Erven
253	KOMATI	226	0	26°5'37.99S	29°27'53.2E	Erven
254	KOMATI	245	0	26°5'41.42S	29°27'56.27E	Erven
255	KOMATI	251	0	26°5'43.32S	29°27'55.24E	Erven
256	KOMATI	256	0	26°5'43.49S	29°27'53.5E	Erven
257	KOMATI	259	0	26°5'44.13S	29°27'52.65E	Erven
258	KOMATI	275	0	26°5'42.52S	29°27'46.96E	Erven
259	KOMATI	290	0	26°5'47.15S	29°27'45.62E	Erven
260	KOMATI	298	0	26°5'46.93S	29°27'48.52E	Erven
261	KOMATI	299	0	26°5'46.41S	29°27'49.21E	Erven
262	KOMATI	312	0	26°5'47.75S	29°27'42.53E	Erven
263	KOMATI	317	0	26°5'50.77S	29°27'45.37E	Erven
264	KOMATI	320	0	26°5'50.21S	29°27'43.39E	Erven
265	KOMATI	327	0	26°5'46.77S	29°27'39.73E	Erven
266	KOMATI	329	0	26°5'45.75S	29°27'41.06E	Erven
267	KOMATI	332	0	26°5'44.21S	29°27'43.08E	Erven

268	KOMATI	356	0	26°5'52.28S	29°27'32.55E	Erven
269	KOMATI	359	0	26°5'50.75S	29°27'34.55E	Erven
270	KOMATI	394	0	26°5'52.79S	29°27'42.59E	Erven
271	KOMATI	395	0	26°5'53.32S	29°27'41.9E	Erven
272	KOMATI	401	0	26°5'56.47S	29°27'37.8E	Erven
273	KOMATI	402	0	26°5'58.44S	29°27'37.9E	Erven
274	KOMATI	423	0	26°5'51.27S	29°27'47.22E	Erven
275	KOMATI	454	3	26°5'53S	29°27'35.85E	Erven
276	KOMATI	454	10	26°5'54.03S	29°27'35.57E	Erven
277	KOMATI	455	5	26°5'56.03S	29°27'31.64E	Erven
278	KOMATI	300	0	26°5'45.88S	29°27'49.89E	Erven
279	KOMATI	311	0	26°5'49.78S	29°27'46.49E	Erven
280	KOMATI	315	0	26°5'49.56S	29°27'44.24E	Erven
281	KOMATI	323	0	26°5'48.4S	29°27'41.68E	Erven
282	KOMATI	330	0	26°5'45.23S	29°27'41.74E	Erven
283	KOMATI	333	0	26°5'44.96S	29°27'43.78E	Erven
284	KOMATI	339	0	26°5'48.04S	29°27'39.77E	Erven
285	KOMATI	341	0	26°5'49.06S	29°27'38.43E	Erven
286	KOMATI	342	0	26°5'49.13S	29°27'36.5E	Erven
287	KOMATI	352	0	26°5'50.37S	29°27'36.23E	Erven
288	KOMATI	355	0	26°5'52.79S	29°27'31.88E	Erven
289	KOMATI	358	0	26°5'51.25S	29°27'33.88E	Erven
290	KOMATI	365	0	26°5'54.06S	29°27'31.91E	Erven
291	KOMATI	376	0	26°5'55.67S	29°27'33.57E	Erven
292	KOMATI	377	0	26°5'55.06S	29°27'33E	Erven
293	KOMATI	393	0	26°5'52.27S	29°27'43.28E	Erven
294	KOMATI	405	0	26°5'56.53S	29°27'40.36E	Erven
295	KOMATI	417	0	26°5'56.68S	29°27'41.92E	Erven
296	KOMATI	422	0	26°5'51.91S	29°27'46.4E	Erven
297	KOMATI	424	0	26°5'50.65S	29°27'48.05E	Erven
298	KOMATI	431	0	26°5'46.23S	29°27'53.81E	Erven
299	KOMATI	435	0	26°5'47.01S	29°27'54.54E	Erven
300	KOMATI	454	1	26°5'53.63S	29°27'34.98E	Erven
301	KOMATI	455	7	26°5'56.84S	29°27'32.44E	Erven
302	KOMATI	199	0	26°5'28.98S	29°27'48.41E	Erven
303	KOMATI	204	0	26°5'29.84S	29°27'47.96E	Erven
304	KOMATI	206	0	26°5'30.83S	29°27'48.14E	Erven
305	KOMATI	218	0	26°5'39.01S	29°27'55.31E	Erven
306	KOMATI	220	0	26°5'40.03S	29°27'56.25E	Erven
307	KOMATI	227	0	26°5'37.49S	29°27'52.73E	Erven
308	KOMATI	249	0	26°5'42.46S	29°27'56.35E	Erven
309	KOMATI	258	0	26°5'44.74S	29°27'53.22E	Erven
310	KOMATI	287	0	26°5'43.24S	29°27'44.19E	Erven
311	KOMATI	295	0	26°5'48.51S	29°27'46.47E	Erven
312	KOMATI	303	0	26°5'45.59S	29°27'51.97E	Erven
313	KOMATI	308	0	26°5'48.21S	29°27'48.55E	Erven
314	KOMATI	309	0	26°5'48.73S	29°27'47.86E	Erven
315	KOMATI	319	0	26°5'50.81S	29°27'43.95E	Erven
316	KOMATI	322	0	26°5'49S	29°27'42.25E	Erven
317	KOMATI	324	0	26°5'48.31S	29°27'37.73E	Erven
318	KOMATI	336	0	26°5'46.5S	29°27'41.77E	Erven
319	KOMATI	370	0	26°5'56.83S	29°27'36.09E	Erven
320	KOMATI	372	0	26°5'58.08S	29°27'35.83E	Erven
321	KOMATI	386	0	26°5'54.67S	29°27'38.46E	Erven
322	KOMATI	387	0	26°5'54.14S	29°27'39.14E	Erven
323	KOMATI	399	0	26°5'55.42S	29°27'39.16E	Erven
324	KOMATI	404	0	26°5'57.17S	29°27'39.54E	Erven
325	KOMATI	430	0	26°5'46.87S	29°27'52.98E	Erven
326	KOMATI	437	0	26°5'48.27S	29°27'52.9E	Erven
327	KOMATI	444	0	26°5'52.69S	29°27'47.13E	Erven

328	KOMATI	454	9	26°5'54.6S	29°27'36.06E	Erven
329	KOMATI	455	8	26°5'57.29S	29°27'32.71E	Erven
330	KOMATI	455	6	26°5'56.44S	29°27'31.97E	Erven
331	KOMATI	455	4	26°5'55.61S	29°27'31.21E	Erven
332	KOMATI	242	0	26°5'42.73S	29°27'54.67E	Erven
333	KOMATI	243	0	26°5'42.3S	29°27'55.21E	Erven
334	KOMATI	269	0	26°5'39.2S	29°27'49.6E	Erven
335	KOMATI	272	0	26°5'41S	29°27'48.97E	Erven
336	KOMATI	277	0	26°5'43.2S	29°27'45.58E	Erven
337	KOMATI	280	0	26°5'45.01S	29°27'47.29E	Erven
338	KOMATI	286	0	26°5'43.84S	29°27'44.74E	Erven
339	KOMATI	289	0	26°5'46.46S	29°27'45.47E	Erven
340	KOMATI	301	0	26°5'45.36S	29°27'50.57E	Erven
341	KOMATI	307	0	26°5'47.68S	29°27'49.23E	Erven
342	KOMATI	314	0	26°5'48.95S	29°27'43.67E	Erven
343	KOMATI	316	0	26°5'50.16S	29°27'44.81E	Erven
344	KOMATI	318	0	26°5'51.41S	29°27'44.52E	Erven
345	KOMATI	325	0	26°5'47.79S	29°27'38.39E	Erven
346	KOMATI	337	0	26°5'47.02S	29°27'41.11E	Erven
347	KOMATI	350	0	26°5'51.58S	29°27'37.36E	Erven
348	KOMATI	354	0	26°5'53.31S	29°27'31.21E	Erven
349	KOMATI	361	0	26°5'52S	29°27'34.6E	Erven
350	KOMATI	364	0	26°5'53.55S	29°27'32.58E	Erven
351	KOMATI	371	0	26°5'57.45S	29°27'36.66E	Erven
352	KOMATI	373	0	26°5'57.47S	29°27'35.26E	Erven
353	KOMATI	388	0	26°5'53.62S	29°27'39.82E	Erven
354	KOMATI	390	0	26°5'52.57S	29°27'41.19E	Erven
355	KOMATI	391	0	26°5'52.04S	29°27'41.88E	Erven
356	KOMATI	403	0	26°5'57.8S	29°27'38.72E	Erven
357	KOMATI	408	0	26°5'54.65S	29°27'42.84E	Erven
358	KOMATI	410	0	26°5'53.38S	29°27'44.48E	Erven
359	KOMATI	414	0	26°5'54.8S	29°27'44.39E	Erven
360	KOMATI	416	0	26°5'56.06S	29°27'42.75E	Erven
361	KOMATI	420	0	26°5'58.58S	29°27'39.46E	Erven
362	KOMATI	434	0	26°5'46.34S	29°27'55.26E	Erven
363	KOMATI	455	0	26°5'57.72S	29°27'33.2E	Erven
364	KOMATI	207	0	26°5'31.34S	29°27'47.68E	Erven
365	KOMATI	216	0	26°5'37.99S	29°27'54.34E	Erven
366	KOMATI	223	0	26°5'39.52S	29°27'54.64E	Erven
367	KOMATI	236	0	26°5'41.31S	29°27'53.44E	Erven
368	KOMATI	273	0	26°5'41.5S	29°27'48.3E	Erven
369	KOMATI	281	0	26°5'45.61S	29°27'47.85E	Erven
370	KOMATI	288	0	26°5'46.23S	29°27'44.76E	Erven
371	KOMATI	296	0	26°5'47.99S	29°27'47.15E	Erven
372	KOMATI	326	0	26°5'47.28S	29°27'39.07E	Erven
373	KOMATI	334	0	26°5'45.47S	29°27'43.12E	Erven
374	KOMATI	340	0	26°5'48.55S	29°27'39.11E	Erven
375	KOMATI	346	0	26°5'51.54S	29°27'38.77E	Erven
376	KOMATI	347	0	26°5'52.15S	29°27'39.33E	Erven
377	KOMATI	349	0	26°5'52.19S	29°27'37.93E	Erven
378	KOMATI	351	0	26°5'50.98S	29°27'36.79E	Erven
379	KOMATI	357	0	26°5'51.77S	29°27'33.22E	Erven
380	KOMATI	362	0	26°5'52.52S	29°27'33.94E	Erven
381	KOMATI	363	0	26°5'53.03S	29°27'33.26E	Erven
382	KOMATI	389	0	26°5'53.09S	29°27'40.51E	Erven
383	KOMATI	406	0	26°5'55.91S	29°27'41.19E	Erven
384	KOMATI	413	0	26°5'54.16S	29°27'45.21E	Erven
385	KOMATI	418	0	26°5'57.32S	29°27'41.1E	Erven
386	KOMATI	432	0	26°5'45.6S	29°27'54.63E	Erven
387	KOMATI	438	0	26°5'48.91S	29°27'52.07E	Erven

388	KOMATI	440	0	26°5'50.17S	29°27'50.42E	Erven
389	KOMATI	443	0	26°5'52.06S	29°27'47.96E	Erven
390	KOMATI	454	2	26°5'53.33S	29°27'35.44E	Erven
391	KOMATI	454	4	26°5'52.62S	29°27'36.29E	Erven
392	KOMATI	6	0	26°5'36.55S	29°27'27.36E	Erven
393	KOMATI	9	0	26°5'34.73S	29°27'29.36E	Erven
394	KOMATI	19	0	26°5'37.18S	29°27'31.22E	Erven
395	KOMATI	25	0	26°5'41.38S	29°27'27.61E	Erven
396	KOMATI	29	0	26°5'44.39S	29°27'24.85E	Erven
397	KOMATI	34	0	26°5'59.05S	29°27'34.53E	Erven
398	KOMATI	41	0	26°5'59.66S	29°27'28.15E	Erven
399	KOMATI	45	0	26°5'56.52S	29°27'25.49E	Erven
400	KOMATI	50	0	26°5'53.11S	29°27'25.62E	Erven
401	KOMATI	54	0	26°5'56.08S	29°27'28.41E	Erven
402	KOMATI	63	0	26°5'56.71S	29°27'27.59E	Erven
403	KOMATI	73	0	26°5'49.39S	29°27'25.44E	Erven
404	KOMATI	75	0	26°5'50.89S	29°27'26.84E	Erven
405	KOMATI	77	0	26°5'52.38S	29°27'28.24E	Erven
406	KOMATI	112	0	26°5'44.11S	29°27'29.25E	Erven
407	KOMATI	114	0	26°5'45.45S	29°27'28.03E	Erven
408	KOMATI	118	0	26°5'48.04S	29°27'27.85E	Erven
409	KOMATI	124	0	26°5'52.15S	29°27'30.26E	Erven
410	KOMATI	129	0	26°5'48.73S	29°27'27.08E	Erven
411	KOMATI	132	0	26°5'46.87S	29°27'31.41E	Erven
412	KOMATI	135	0	26°5'46.43S	29°27'33.7E	Erven
413	KOMATI	136	0	26°5'47.04S	29°27'32.87E	Erven
414	KOMATI	144	0	26°5'47.41S	29°27'34.84E	Erven
415	KOMATI	149	0	26°5'49.94S	29°27'33.13E	Erven
416	KOMATI	162	0	26°5'36.99S	29°27'46.67E	Erven
417	KOMATI	168	0	26°5'39.36S	29°27'39.43E	Erven
418	KOMATI	185	0	26°5'26.67S	29°27'46.5E	Erven
419	KOMATI	190	0	26°5'27.64S	29°27'46.03E	Erven
420	KOMATI	192	0	26°5'28.64S	29°27'46.41E	Erven
421	KOMATI	201	0	26°5'27.77S	29°27'48.66E	Erven
422	KOMATI	208	0	26°5'31.84S	29°27'47.24E	Erven
423	KOMATI	217	0	26°5'38.55S	29°27'54.83E	Erven
424	KOMATI	240	0	26°5'39.27S	29°27'51.53E	Erven
425	KOMATI	250	0	26°5'42.9S	29°27'55.78E	Erven
426	KOMATI	253	0	26°5'41.69S	29°27'51.8E	Erven
427	KOMATI	265	0	26°5'41.26S	29°27'46.93E	Erven
428	KOMATI	270	0	26°5'39.97S	29°27'50.31E	Erven
429	KOMATI	276	0	26°5'42.59S	29°27'45.01E	Erven
430	KOMATI	285	0	26°5'44.44S	29°27'45.31E	Erven
431	KOMATI	292	0	26°5'47.33S	29°27'44.35E	Erven
432	KOMATI	294	0	26°5'49.03S	29°27'45.79E	Erven
433	KOMATI	306	0	26°5'47.16S	29°27'49.92E	Erven
434	KOMATI	310	0	26°5'49.26S	29°27'47.18E	Erven
435	KOMATI	331	0	26°5'44.72S	29°27'42.41E	Erven
436	KOMATI	338	0	26°5'47.53S	29°27'40.44E	Erven
437	KOMATI	343	0	26°5'49.74S	29°27'37.07E	Erven
438	KOMATI	348	0	26°5'52.78S	29°27'38.5E	Erven
439	KOMATI	353	0	26°5'49.77S	29°27'35.67E	Erven
440	KOMATI	367	0	26°5'55.02S	29°27'34.4E	Erven
441	KOMATI	369	0	26°5'56.22S	29°27'35.52E	Erven
442	KOMATI	374	0	26°5'56.87S	29°27'34.69E	Erven
443	KOMATI	375	0	26°5'56.27S	29°27'34.13E	Erven
444	KOMATI	384	0	26°5'55.72S	29°27'37.09E	Erven
445	KOMATI	407	0	26°5'55.28S	29°27'42.01E	Erven
446	KOMATI	415	0	26°5'55.42S	29°27'43.57E	Erven
447	KOMATI	426	0	26°5'49.39S	29°27'49.69E	Erven

448	KOMATI	439	0	26°5'49.54S	29°27'51.25E	Erven
449	KOMATI	442	0	26°5'51.43S	29°27'48.78E	Erven
450	KOMATI	455	3	26°5'55.27S	29°27'30.92E	Erven
451	KOMATI	455	1	26°5'54.49S	29°27'30.2E	Erven
452	KOMATI	455	2	26°5'54.88S	29°27'30.5E	Erven
453	GELUK	26	0	26°5'52.64S	29°30'18.3E	Farm
454	BROODSNEYERSPLAATS	25	0	26°3'52.68S	29°29'36.26E	Farm
455	BLINKPAN	606	0	26°4'54.58S	29°28'9.62E	Farm
456	GOEDEHOOP	46	0	26°7'40.51S	29°25'26.47E	Farm
457	KOMATI POWER STATION 56	27	0	26°5'57.82S	29°27'49.26E	Farm
458	BROODSNEYERSPLAATS	25	11	26°5'21.76S	29°28'51.79E	Farm Portion
459	KOMATI POWER STATION 56	27	21	26°5'59.32S	29°27'15.81E	Farm Portion
460	KOPPIES KRAAL HS	56	10	26°5'47.55S	29°27'13.57E	Farm Portion
461	GELUK	26	7	26°6'29.95S	29°28'45.35E	Farm Portion
462	GELUK	26	27	26°6'38.56S	29°28'27.27E	Farm Portion
463	KOPPIES KRAAL HS	56	2	26°5'55.35S	29°27'2.25E	Farm Portion
464	BROODSNEYERSPLAATS	25	7	26°5'28.75S	29°29'12.17E	Farm Portion
465	KOPPIES KRAAL HS	56	12	26°6'4.95S	29°28'42.81E	Farm Portion
466	GOEDEHOOP	46	3	26°7'8.79S	29°27'28.85E	Farm Portion
467	KOPPIES KRAAL HS	56	0	26°5'57.94S	29°27'55.33E	Farm Portion
468	BROODSNEYERSPLAATS	25	39	26°5'17.64S	29°29'4.47E	Farm Portion
469	KOPPIES KRAAL HS	56	1	26°5'54.02S	29°27'2.07E	Farm Portion
470	KOPPIES KRAAL HS	56	6	26°6'9.44S	29°27'13.98E	Farm Portion
471	KOPPIES KRAAL HS	56	11	26°5'34.96S	29°27'19.57E	Farm Portion
472	BROODSNEYERSPLAATS	25	38	26°5'16.88S	29°29'5.29E	Farm Portion
473	KOMATI POWER STATION 56	27	24	26°5'59.58S	29°27'3.5E	Farm Portion
474	BLINKPAN	606	0	26°4'50.65S	29°28'7.51E	Farm Portion

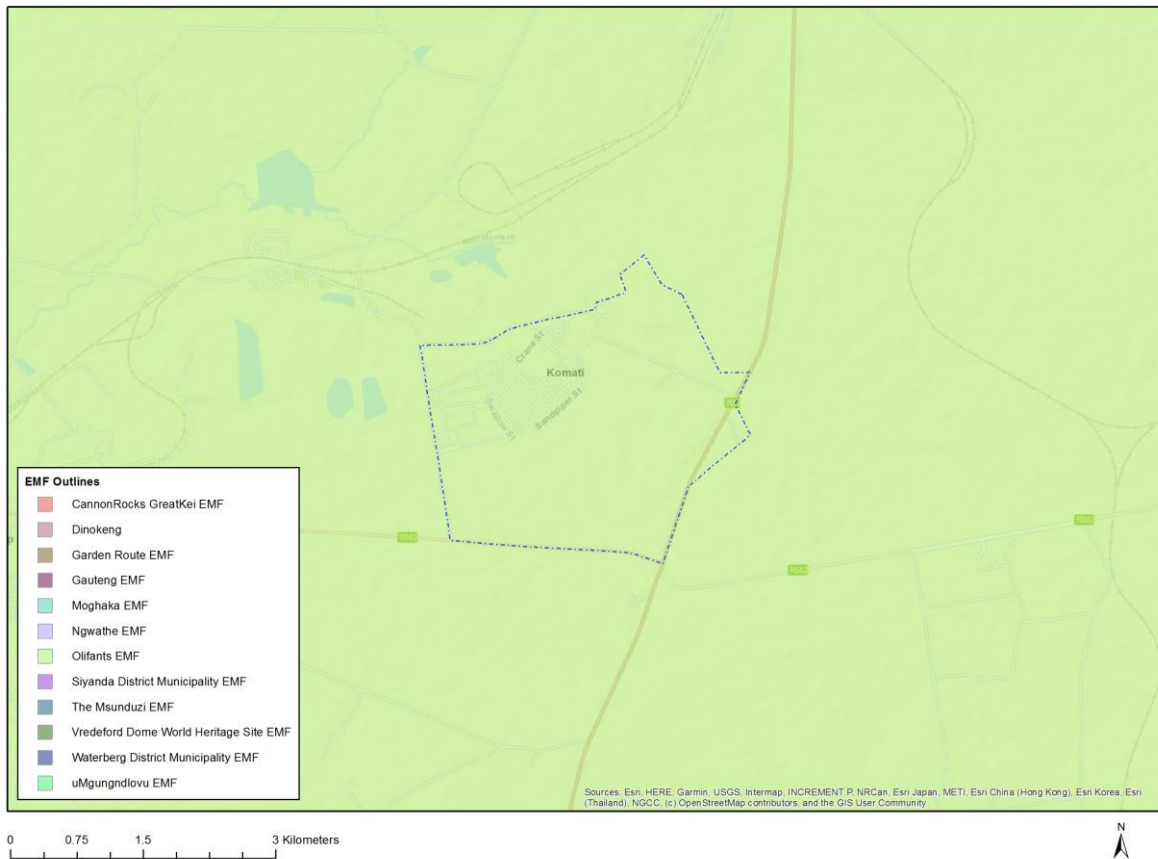
Development footprint¹ vertices:
No development footprint(s) specified.

Wind and Solar developments with an approved Environmental Authorisation or applications under consideration within 30 km of the proposed area

No	EIA Reference No	Classification	Status of application	Distance from proposed area (km)
1	14/12/16/3/3/2/759	Solar PV	Approved	18.8

¹ "development footprint", means the area within the site on which the development will take place and includes all ancillary developments for example roads, power lines, boundary walls, paving etc. which require vegetation clearance or which will be disturbed and for which the application has been submitted.

Environmental Management Frameworks relevant to the application



Environmental Management Framework	LINK
Olifants EMF	https://screening.environment.gov.za/ScreeningDownloads/EMF/Zone 46, 67, 78, 80, 92, 103, 122, 129.pdf

Environmental screening results and assessment outcomes

The following sections contain a summary of any development incentives, restrictions, exclusions or prohibitions that apply to the proposed development site as well as the most environmental sensitive features on the site based on the site sensitivity screening results for the application classification that was selected. The application classification selected for this report is:

Utilities Infrastructure | Electricity | Generation | Renewable | Solar | PV.

Relevant development incentives, restrictions, exclusions or prohibitions

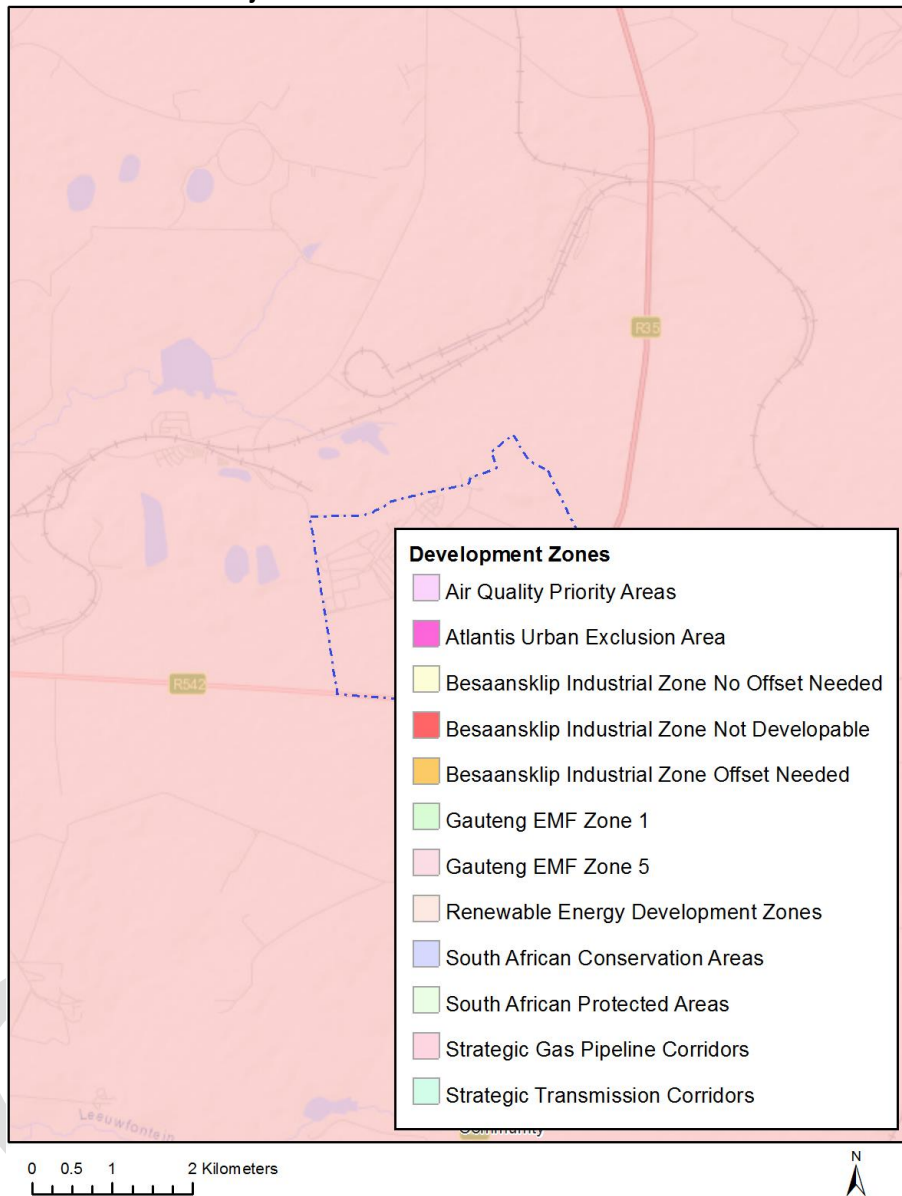
The following development incentives, restrictions, exclusions or prohibitions and their implications that apply to this site are indicated below.

Incentive, restriction or prohibition	Implication
Air Quality-Highveld Priority Area	https://screening.environment.gov.za/ScreeningDownloads/DevelopmentZones/HIGHVELD_PRIORITY_AREA_AQMP.pdf
Strategic Gas Pipeline Corridors -Phase 8: Rompco Pipeline Corridor	https://screening.environment.gov.za/ScreeningDownloads/DevelopmentZones/Combined_GAS.pdf

OFFICIAL

Map indicating proposed development footprint within applicable development incentive, restriction, exclusion or prohibition zones

Project Location: Eskom Komati PV and BESS



Proposed Development Area Environmental Sensitivity

The following summary of the development site environmental sensitivities is identified. Only the highest environmental sensitivity is indicated. The footprint environmental sensitivities for the proposed development footprint as identified, are indicative only and must be verified on site by a suitably qualified person before the specialist assessments identified below can be confirmed.

Theme	Very High sensitivity	High sensitivity	Medium sensitivity	Low sensitivity
Agriculture Theme		X		
Animal Species Theme		X		

Aquatic Biodiversity Theme	X			
Archaeological and Cultural Heritage Theme				X
Avian Theme				X
Civil Aviation (Solar PV) Theme			X	
Defence Theme				X
Landscape (Solar) Theme	X			
Paleontology Theme	X			
Plant Species Theme			X	
RFI Theme			X	
Terrestrial Biodiversity Theme	X			

Specialist assessments identified

Based on the selected classification, and the environmental sensitivities of the proposed development footprint, the following list of specialist assessments have been identified for inclusion in the assessment report. It is the responsibility of the EAP to confirm this list and to motivate in the assessment report, the reason for not including any of the identified specialist study including the provision of photographic evidence of the site situation.

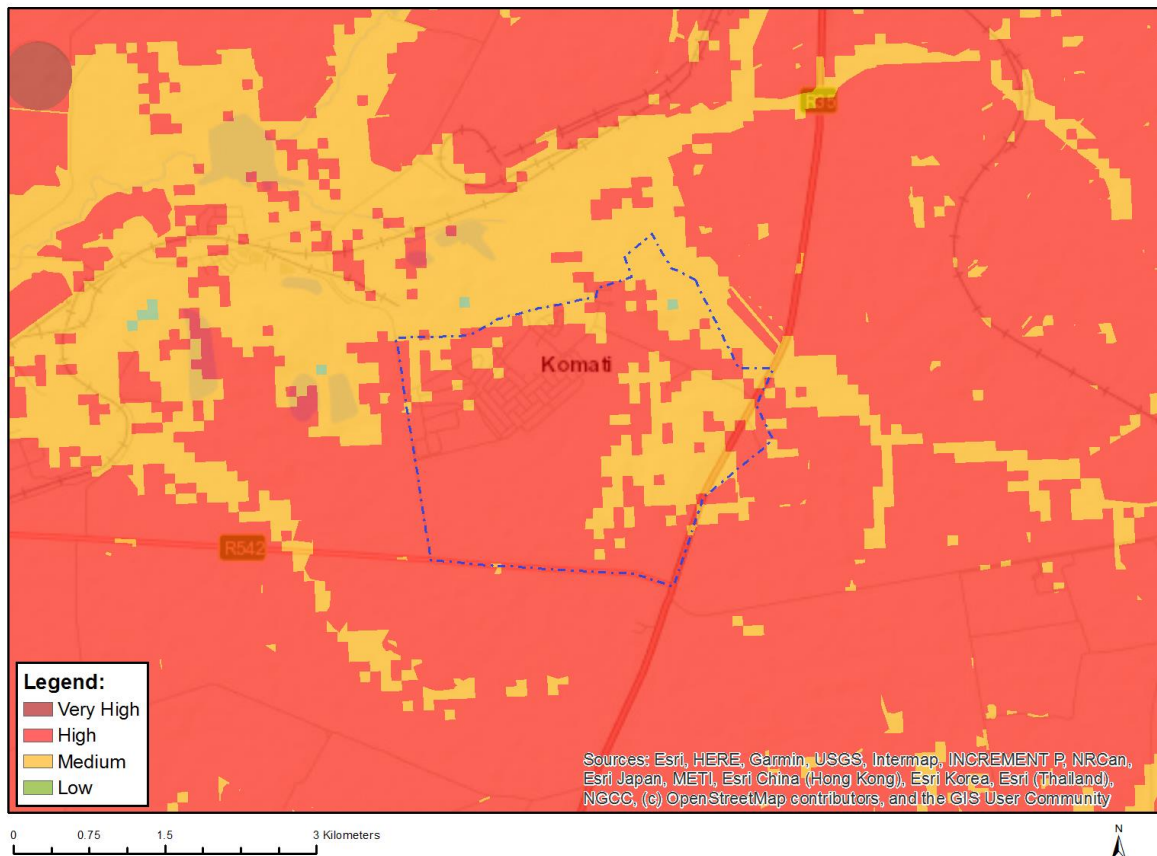
N o	Specialist assessment	Assessment Protocol
1	Agricultural Impact Assessment	https://screening.environment.gov.za/ScreeningDownloads/AssessmentProtocols/Gazetted_WindAndSolar_Agriculture_Assessment_Protocols.pdf
2	Landscape/Visual Impact Assessment	https://screening.environment.gov.za/ScreeningDownloads/AssessmentProtocols/Gazetted_General_Requirement_Assessment_Protocols.pdf
3	Archaeological and Cultural Heritage Impact Assessment	https://screening.environment.gov.za/ScreeningDownloads/AssessmentProtocols/Gazetted_General_Requirement_Assessment_Protocols.pdf
4	Palaeontology Impact Assessment	https://screening.environment.gov.za/ScreeningDownloads/AssessmentProtocols/Gazetted_General_Requirement_Assessment_Protocols.pdf
5	Terrestrial Biodiversity Impact Assessment	https://screening.environment.gov.za/ScreeningDownloads/AssessmentProtocols/Gazetted_Terrestrial_Biodiversity_Assessment_Protocols.pdf
6	Aquatic Biodiversity	https://screening.environment.gov.za/ScreeningDownloads/AssessmentProtocols/Gazetted_Aquatic_Biodiversity_Assessment_Protocols.pdf

	Impact Assessment	
7	Civil Aviation Assessment	https://screening.environment.gov.za/ScreeningDownloads/AssessmentProtocols/Gazetted_Civil_Aviation_Installations_Assessment_Protocols.pdf
8	Defense Assessment	https://screening.environment.gov.za/ScreeningDownloads/AssessmentProtocols/Gazetted_Defence_Installations_Assessment_Protocols.pdf
9	RFI Assessment	https://screening.environment.gov.za/ScreeningDownloads/AssessmentProtocols/Gazetted_General_Requirement_Assessment_Protocols.pdf
10	Geotechnical Assessment	https://screening.environment.gov.za/ScreeningDownloads/AssessmentProtocols/Gazetted_General_Requirement_Assessment_Protocols.pdf
11	Socio-Economic Assessment	https://screening.environment.gov.za/ScreeningDownloads/AssessmentProtocols/Gazetted_General_Requirement_Assessment_Protocols.pdf
12	Plant Species Assessment	https://screening.environment.gov.za/ScreeningDownloads/AssessmentProtocols/Gazetted_Plant_Species_Assessment_Protocols.pdf
13	Animal Species Assessment	https://screening.environment.gov.za/ScreeningDownloads/AssessmentProtocols/Gazetted_Animal_Species_Assessment_Protocols.pdf

Results of the environmental sensitivity of the proposed area.

The following section represents the results of the screening for environmental sensitivity of the proposed site for relevant environmental themes associated with the project classification. It is the duty of the EAP to ensure that the environmental themes provided by the screening tool are comprehensive and complete for the project. Refer to the disclaimer.

MAP OF RELATIVE AGRICULTURE THEME SENSITIVITY

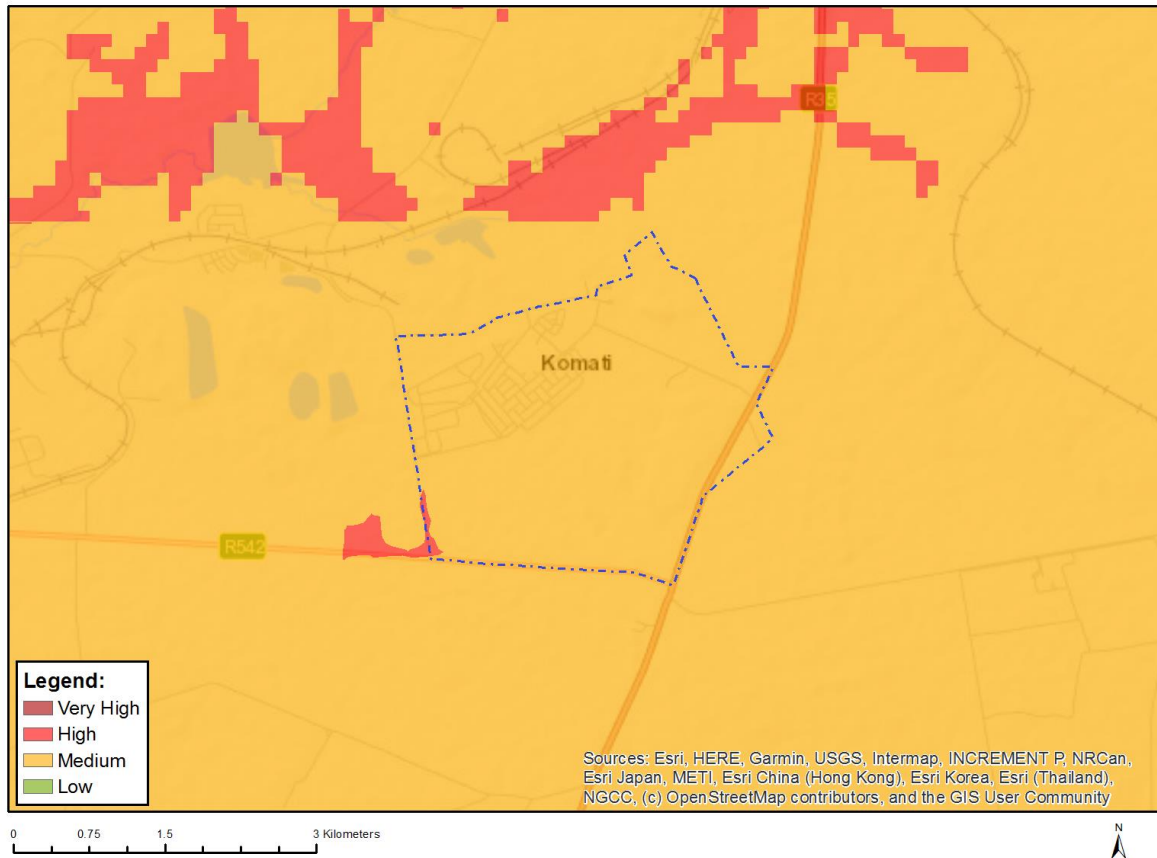


Very High sensitivity	High sensitivity	Medium sensitivity	Low sensitivity
	X		

Sensitivity Features:

Sensitivity	Feature(s)
High	Land capability;09. Moderate-High/10. Moderate-High
High	Annual Crop Cultivation / Planted Pastures Rotation;Land capability;09. Moderate-High/10. Moderate-High
High	Annual Crop Cultivation / Planted Pastures Rotation;Land capability;06. Low-Moderate/07. Low-Moderate/08. Moderate
Low	Land capability;01. Very low/02. Very low/03. Low-Very low/04. Low-Very low/05. Low
Medium	Land capability;06. Low-Moderate/07. Low-Moderate/08. Moderate

MAP OF RELATIVE ANIMAL SPECIES THEME SENSITIVITY



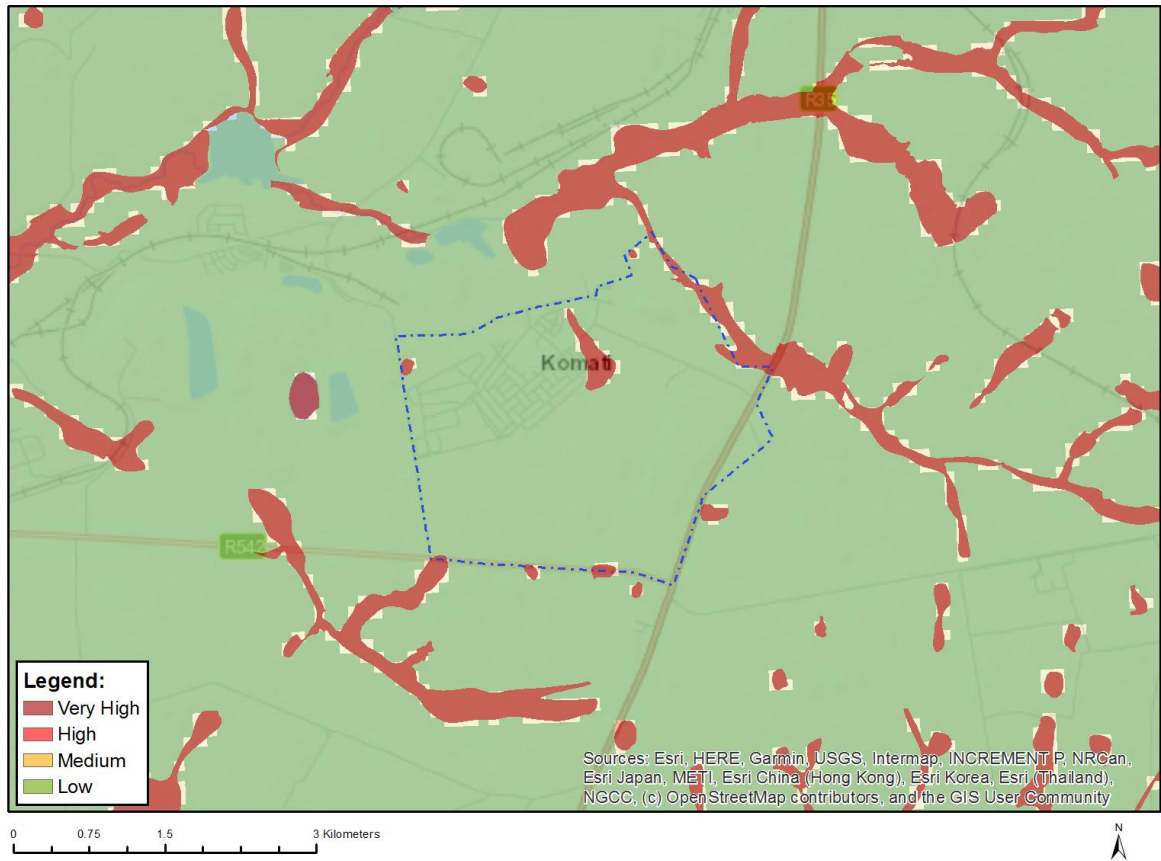
Where only a sensitive plant unique number or sensitive animal unique number is provided in the screening report and an assessment is required, the environmental assessment practitioner (EAP) or specialist is required to email SANBI at eiadatarequests@sanbi.org.za listing all sensitive species with their unique identifiers for which information is required. The name has been withheld as the species may be prone to illegal harvesting and must be protected. SANBI will release the actual species name after the details of the EAP or specialist have been documented.

Very High sensitivity	High sensitivity	Medium sensitivity	Low sensitivity
	X		

Sensitivity Features:

Sensitivity	Feature(s)
High	Mammalia-Felis nigripes
Medium	Aves-Tyto capensis
Medium	Aves-Hydroprogne caspia
Medium	Aves-Eupodotis senegalensis
Medium	Mammalia-Crociodura maquassiensis
Medium	Mammalia-Dasymys robertsii
Medium	Mammalia-Hydrichtis maculicollis
Medium	Mammalia-Ourebia ourebi ourebi

MAP OF RELATIVE AQUATIC BIODIVERSITY THEME SENSITIVITY



Very High sensitivity	High sensitivity	Medium sensitivity	Low sensitivity
X			

Sensitivity Features:

Sensitivity	Feature(s)
Low	Low sensitivity
Very High	Wetlands and Estuaries

MAP OF RELATIVE ARCHAEOLOGICAL AND CULTURAL HERITAGE THEME SENSITIVITY



Very High sensitivity	High sensitivity	Medium sensitivity	Low sensitivity
			X

Sensitivity Features:

Sensitivity	Feature(s)
Low	Low sensitivity

MAP OF RELATIVE AVIAN THEME SENSITIVITY

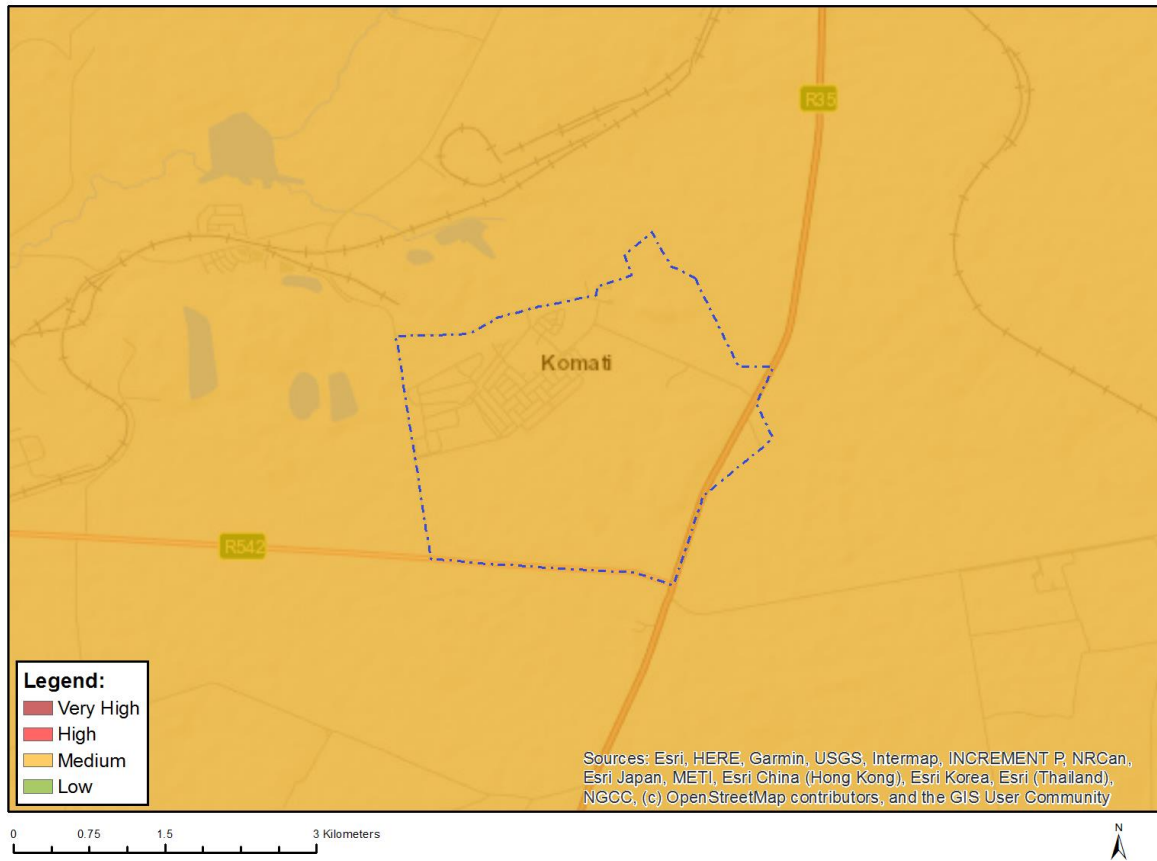


Very High sensitivity	High sensitivity	Medium sensitivity	Low sensitivity
			X

Sensitivity Features:

Sensitivity	Feature(s)
Low	Low Sensitivity

MAP OF RELATIVE CIVIL AVIATION (SOLAR PV) THEME SENSITIVITY



Very High sensitivity	High sensitivity	Medium sensitivity	Low sensitivity
		X	

Sensitivity Features:

Sensitivity	Feature(s)
Medium	Within 8 km of an other civil aviation aerodrome

MAP OF RELATIVE DEFENCE THEME SENSITIVITY

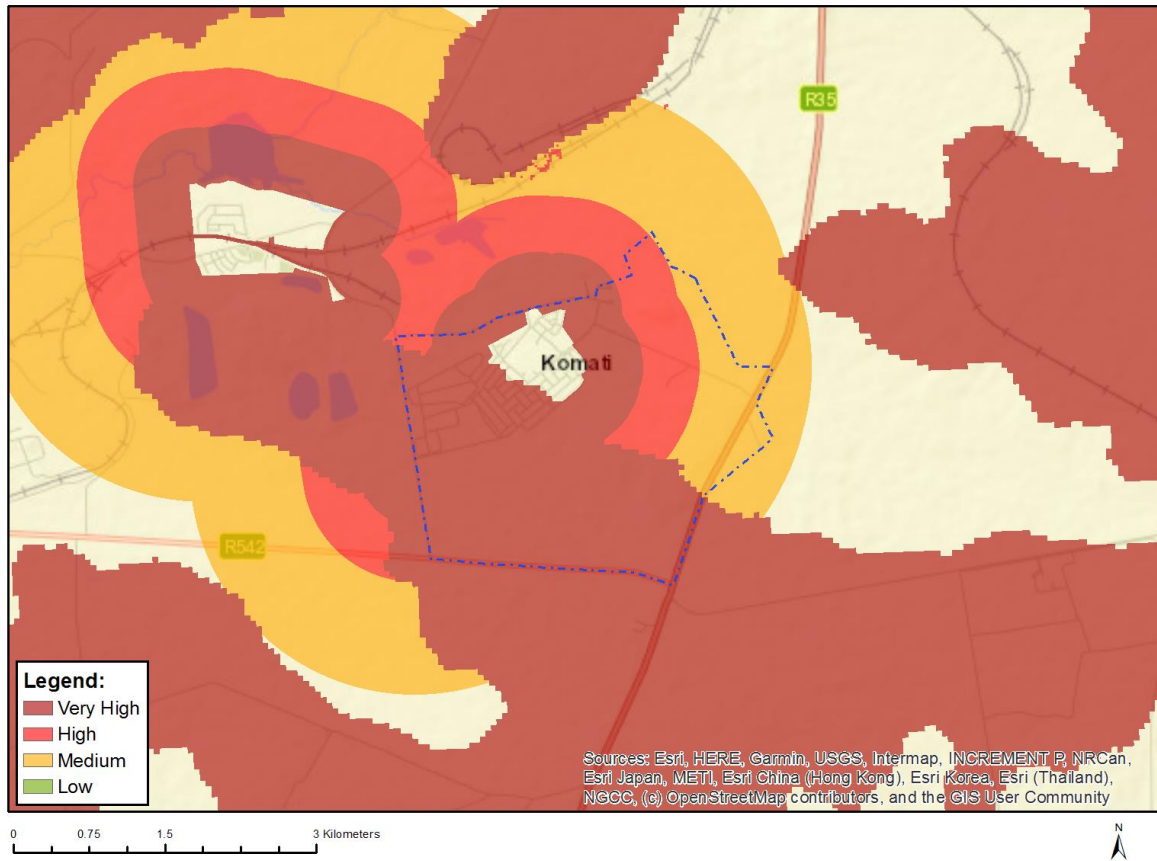


Very High sensitivity	High sensitivity	Medium sensitivity	Low sensitivity
			X

Sensitivity Features:

Sensitivity	Feature(s)
Low	Low sensitivity

MAP OF RELATIVE LANDSCAPE (SOLAR) THEME SENSITIVITY

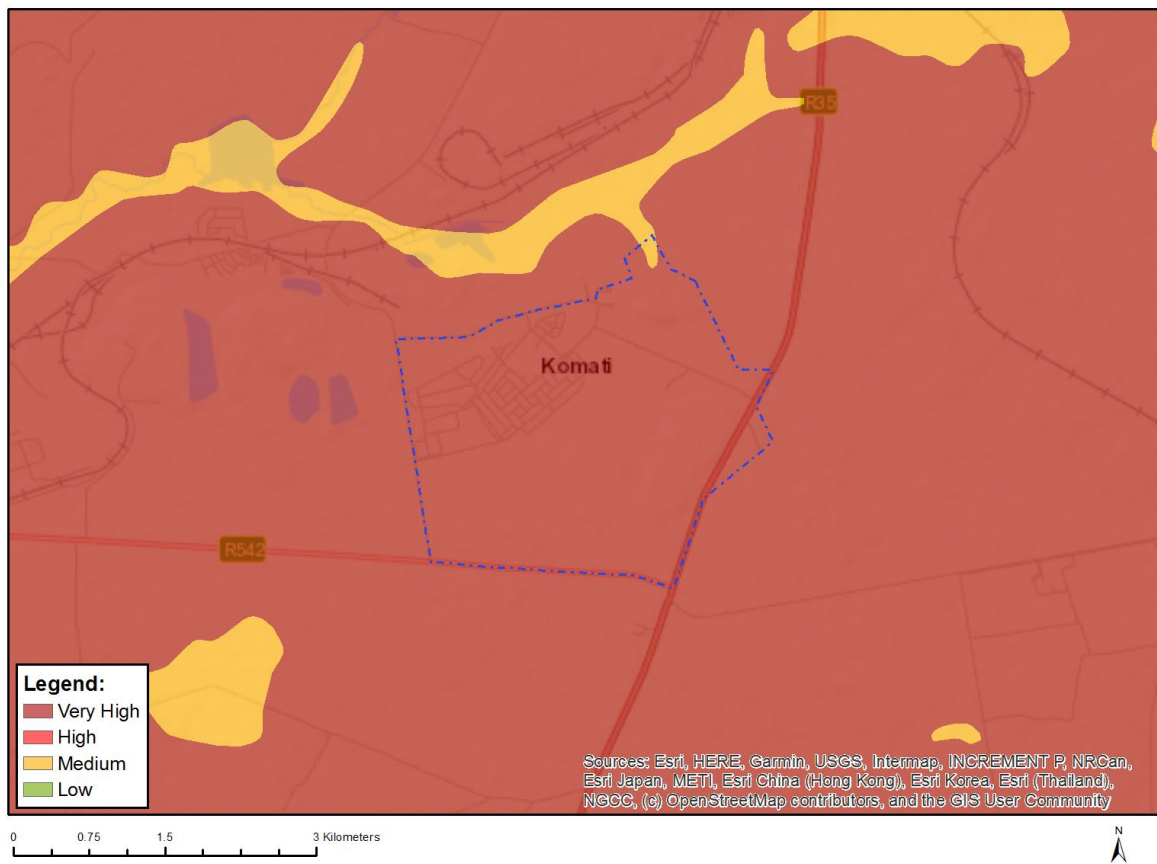


Very High sensitivity	High sensitivity	Medium sensitivity	Low sensitivity
X			

Sensitivity Features:

Sensitivity	Feature(s)
High	Between 500 and 1000 m of a town or village
Medium	Between a and 2 km of a town or village
Very High	Within 500 m of a town or village
Very High	Mountain tops and high ridges

MAP OF RELATIVE PALEONTOLOGY THEME SENSITIVITY

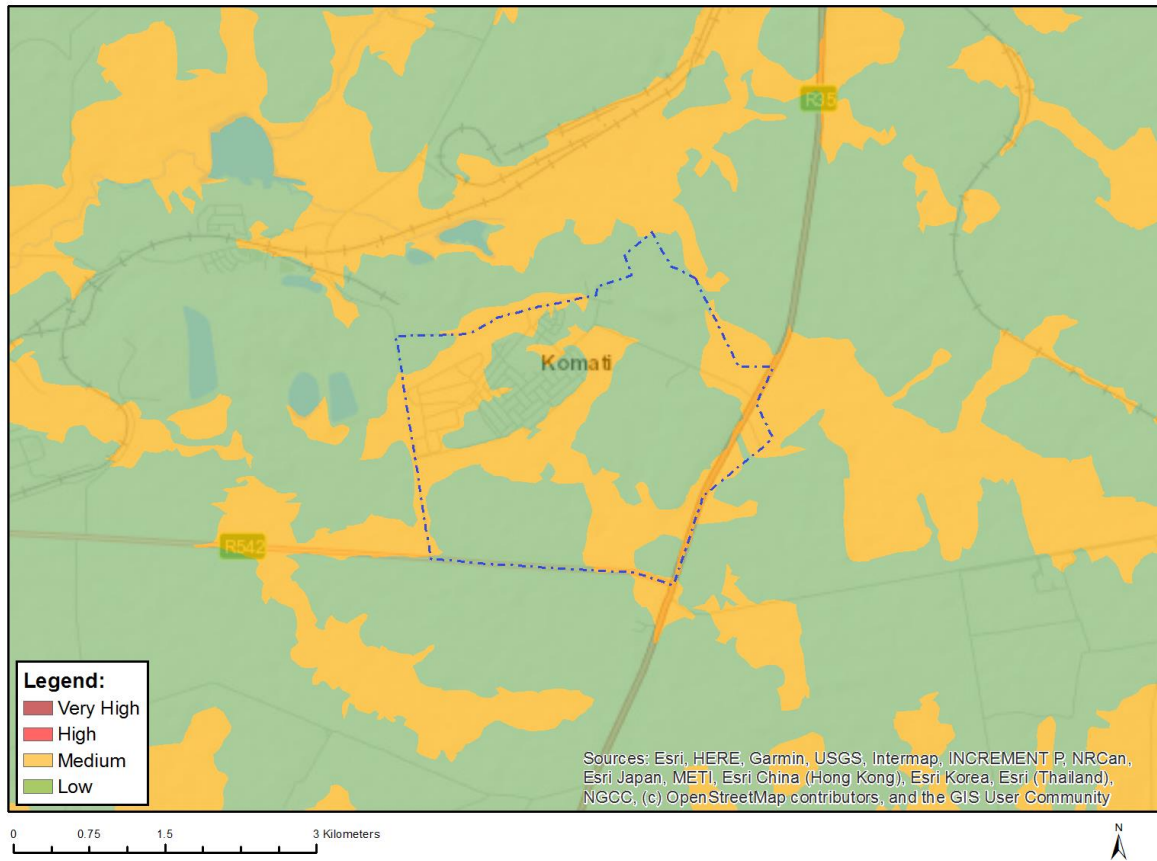


Very High sensitivity	High sensitivity	Medium sensitivity	Low sensitivity
X			

Sensitivity Features:

Sensitivity	Feature(s)
Medium	Features with a Medium paleontological sensitivity
Very High	Features with a Very High paleontological sensitivity

MAP OF RELATIVE PLANT SPECIES THEME SENSITIVITY



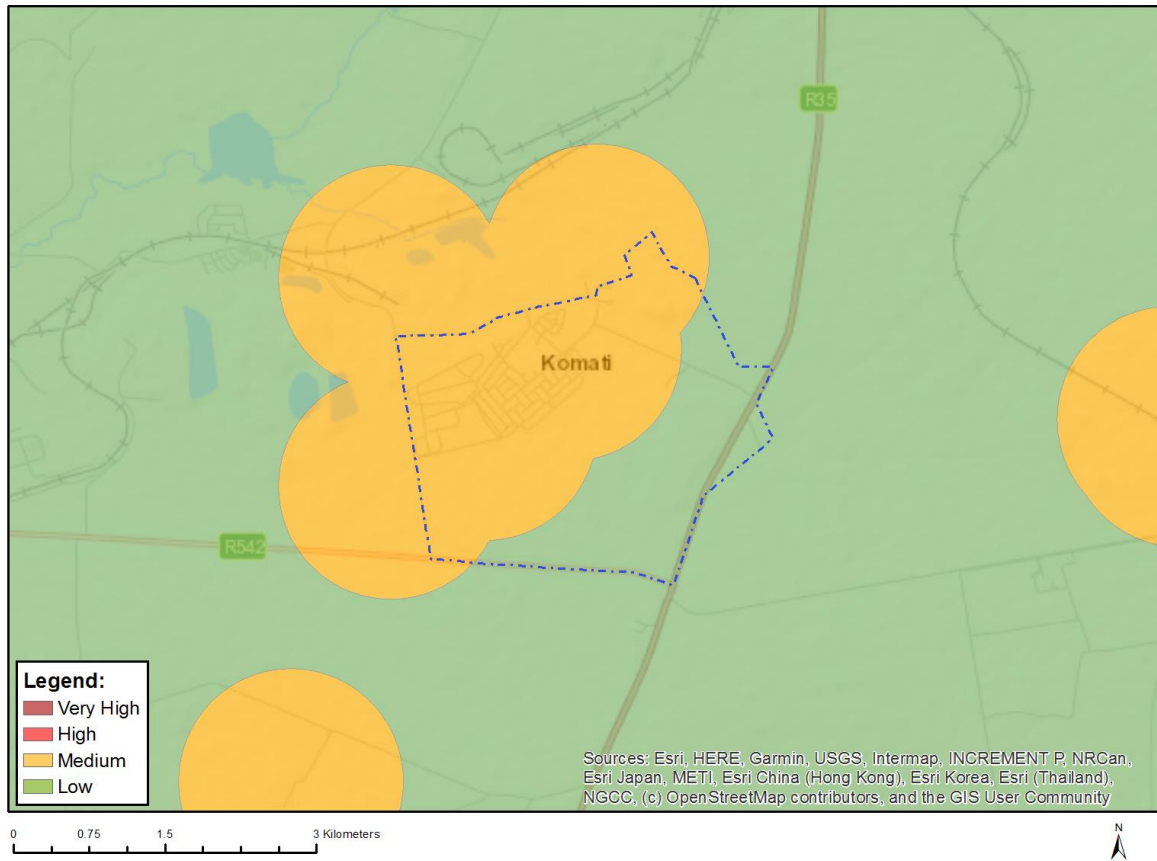
Where only a sensitive plant unique number or sensitive animal unique number is provided in the screening report and an assessment is required, the environmental assessment practitioner (EAP) or specialist is required to email SANBI at eiadatarequests@sanbi.org.za listing all sensitive species with their unique identifiers for which information is required. The name has been withheld as the species may be prone to illegal harvesting and must be protected. SANBI will release the actual species name after the details of the EAP or specialist have been documented.

Very High sensitivity	High sensitivity	Medium sensitivity	Low sensitivity
		X	

Sensitivity Features:

Sensitivity	Feature(s)
Low	Low Sensitivity
Medium	Sensitive species 41
Medium	Sensitive species 691
Medium	Pachycarpus suaveolens

MAP OF RELATIVE RFI THEME SENSITIVITY

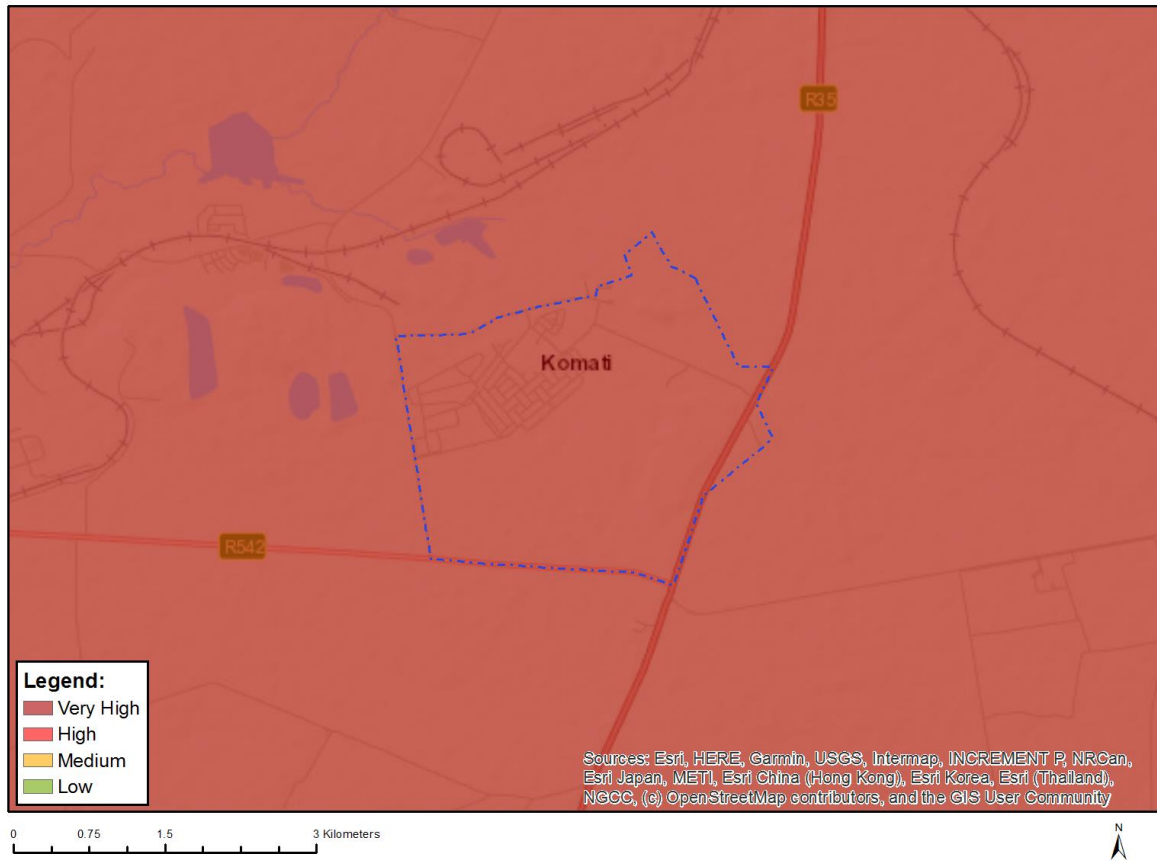


Very High sensitivity	High sensitivity	Medium sensitivity	Low sensitivity
		X	

Sensitivity Features:

Sensitivity	Feature(s)
Low	Low sensitivity
Medium	Within 1 km of a telecommunication facility

MAP OF RELATIVE TERRESTRIAL BIODIVERSITY THEME SENSITIVITY



Very High sensitivity	High sensitivity	Medium sensitivity	Low sensitivity
X			

Sensitivity Features:

Sensitivity	Feature(s)
Very High	Critical biodiversity area 2
Very High	Vulnerable ecosystem