



Mura 1 (Pty) Ltd

---

# MURA PV DEVELOPMENT

Stakeholder Engagement Report





Mura 1 (Pty) Ltd

---

# MURA PV DEVELOPMENT

## Stakeholder Engagement Report

**TYPE OF DOCUMENT (VERSION) PUBLIC**

**PROJECT NO. 41103930**

**DATE: MARCH 2023**

WSP

Building 1, Maxwell Office Park  
Magwa Crescent West, Waterfall City  
Midrand, 1685  
South Africa

Phone: +27 11 254 4800

WSP.com



# QUALITY CONTROL

---

Issue/revision	First issue	Revision 1	Revision 2	Revision 3
Remarks	For Public Review			
Date	March 2023			
Prepared by	Megan Govender			
Signature				
Checked by	Ashlea Strong			
Signature				
Authorised by	Ashlea Strong			
Signature				
Project number	41103930			
Report number	01			
File reference	\\corp.pbwan.net\za\Central_Data\Projects\41100xxx\41103930 - RedCap Nuweveld PV Cluster\41 ES\01-Reports\09 Stakeholder Engagement Report\			

# CONTENTS

---

## GLOSSARY

<b>1</b>	<b>INTRODUCTION</b>	<b>1</b>
1.1	PROJECT BACKGROUND	1
1.2	TERMS OF REFERENCE	3
1.3	ENVIRONMENTAL ASSESSMENT PRACTITIONER	3
1.4	PUBLIC PARTICIPATION	4
1.5	APPROACH TO STAKEHOLDER ENGAGEMENT	6
<b>2</b>	<b>PUBLIC PARTICIPATION TO DATE</b>	<b>9</b>
2.1	PRE-APPLICATION CONSULTATION	9
2.2	IDENTIFICATION OF KEY STAKEHOLDERS	9
2.3	NOTIFICATION PROCEDURES	11
2.4	STAKEHOLDER REGISTRATION	12
2.5	COMMENTS RECEIVED	12

---

## TABLES

Table 1-1 – Mura PV Development Environmental Applications	3
Table 1-2 – Details of the EAP	3
Table 1-3 – Level of Public Participation as per Public Participation Guideline (DEA, 2017)	6
Table 2-1 – Interested and Affected Parties	9
Table 2-2 – Dates on which the advert will be published	11

---

## FIGURES

Figure 1-1 - Mura PV Development Locality	2
---	---

---



---

## ***APPENDICES***

APPENDIX A

STAKEHOLDER DATABASE

APPENDIX B

NOTIFICATIONS

APPENDIX B.1

NEWSPAPER ADVERT

APPENDIX B.2

SITE NOTICES

APPENDIX C

MEETINGS

APPENDIX C.1

DFFE PRE-APPLICATION MEETING

# GLOSSARY

---

Abbreviation	Definition
BA	Basic Assessment
CA	Competent Authority
CAA	South African Civil Aviation Authority
DALRRD	Department of Agriculture, Land Reform and Rural Development
DEA	Department of Environmental Affairs
DFFE	Department of Forestry, Fisheries and Environment
DMRE	Department of Mineral Resources and Energy
DWS	Department of Water and Sanitation
EA	Environmental Authorisation
EAP	Environmental Assessment Practitioner
EGI	Electrical Grid Infrastructure
EIA	Environmental Impact Assessment
GN	Government Notice
HWC	Heritage Western Cape
I&APs	Interested and Affected Parties
NC DENC	Northern Cape Department of Environment and Nature Conservation
NC DALRRD	Northern Cape Department of Agriculture, Land Reform and Rural Development
NEMA	National Environmental Management Act (Act 107 of 1998)
PPP	Public Participation Process
PV	Photovoltaic
REDZ	Renewable Energy Development Zone
S&EIR	Scoping & Environmental Impact Report
SAHRA	South African Heritage Resources Agency
SANRAL	South African National Roads Agency Limited



SAWS	South African Weather Service
SER	Stakeholder Engagement Report
SKA	Square Kilometre Array
WC DEADP	Western Cape Department of Environmental Affairs and Development Planning
WSP	WSP Group Africa (Pty) Ltd

# 1 INTRODUCTION

---

WSP Group Africa (Pty) Ltd (WSP) has been appointed by Mura 1 (Pty) Ltd to undertake an Environmental Impact Assessment (EIA) to meet the requirements under the National Environmental Management Act (Act 107 of 1998) (NEMA), for the proposed Mura Photovoltaic (PV) Development between Loxton and Beaufort West in the Beaufort West Local Municipality and Ubuntu Local Municipality and the Central Karoo District Municipality and Pixley ka Seme District Municipality in the Western Cape and Northern Cape Provinces.

## 1.1 PROJECT BACKGROUND

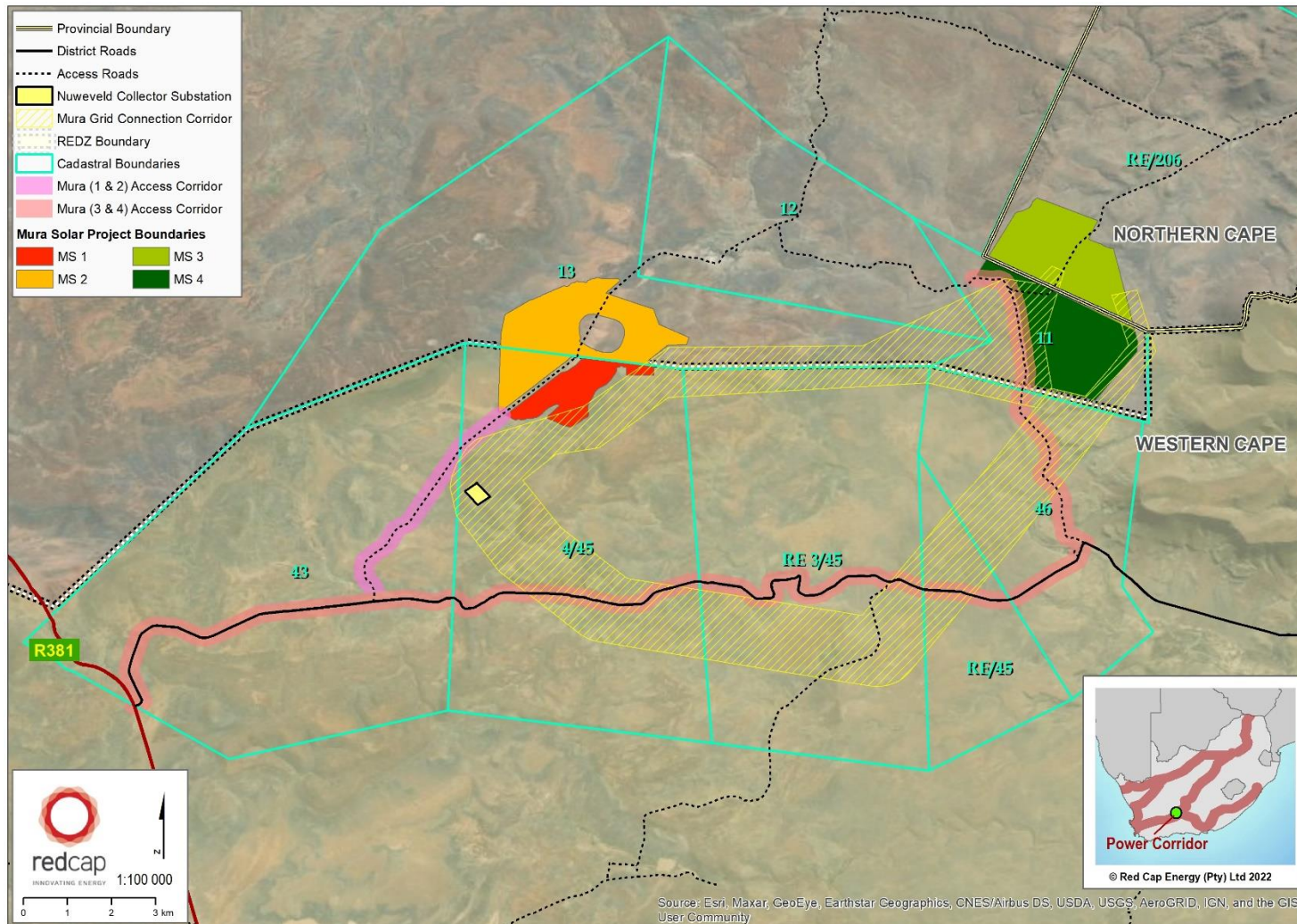
Red Cap Energy is proposing to develop four solar facilities, namely Mura 1, Mura 2, Mura 3, and Mura 4, and an associated grid connection, collectively known as the Mura PV Development between Loxton and Beaufort West (Refer to **Figure 1-1**). The proposed Mura PV Development is located in close proximity to the approved Nuweveld Wind Farm Development.

Each solar facility will connect to the Eskom grid via new 132 kV overhead lines (assessed in a separate process to the PV facilities) connecting up to two on-site solar substations via adjacent Eskom switching stations to the approved Nuweveld Collector Substation.

For the grid connection, an Electrical Grid Infrastructure (EGI) Corridor is proposed and is assessed as a separate project. The grid line is arranged in what is called a "collector ring line". This implies that it is a circular grid line and not just a single line between the Nuweveld Collector Substation and the Mura facilities. The use of a circular "collector ring line" is an approach used by Eskom and others to improve the grid stability and to ensure that if the grid line is damaged on one side of the "collector ring line", that the solar facilities can still export their energy along the other side of the ring line while the fault is repaired. This allows these facilities to be better integrated into the national grid and to better reduce risks of downtime which enables these solar facility projects to be better adapted to potential amendments to future bidding requirements or to potentially give them a competitive advantage over other similar projects.

Mura 1 Solar PV Facility and Mura EGI Corridor fall within the Beaufort West Renewable Energy Development Zones (REDZ), as per Government Notice (GN) No. 145 in Government Gazette 44191, therefore these applications will be subject to a Basic Assessment (BA) Process in terms of NEMA (as amended) and Appendix 1 of the EIA Regulations, 2014 promulgated in Government Gazette 40772 and GN R326, R327, R325 and R324 on 7 April 2017. Mura 2, 3 and 4 Solar PV Facilities will be subject to a Scoping and Environmental Impact Assessment Process in terms of NEMA (as amended) and Appendix 2 and 3 of the EIA Regulations, 2014 promulgated in Government Gazette 40772 and GN R326, R327, R325 and R324 on 7 April 2017.





**Figure 1-1 - Mura PV Development Locality**



## 1.2 TERMS OF REFERENCE

There are five applications associated with the Mura PV Development as indicated in **Table 1-1**.

**Table 1-1 – Mura PV Development Environmental Applications**

Project	Details	Environmental Process
Mura 1 Solar PV Facility	Up to 150 MW solar facility including associated infrastructure	BA Process
Mura 2 Solar PV Facility	Up to 400 MW solar facility including associated infrastructure	Scoping & Environmental Impact Report (S&EIR) Process
Mura 3 Solar PV Facility	Up to 320 MW solar facility including associated infrastructure	S&EIR Process
Mura 4 Solar PV Facility	Up to 360 MW solar facility including associated infrastructure	S&EIR Process
Mura EGI Corridor	132 kV lines and associated infrastructure within the Mura EGI Corridor	BA Process

A combined Public Participation Process (PPP) is being undertaken for all projects mentioned above, and as such this Stakeholder Engagement Report (SER) is applicable to all projects.

## 1.3 ENVIRONMENTAL ASSESSMENT PRACTITIONER

WSP was appointed in the role of Independent Environmental Assessment Practitioner (EAP) to undertake the Environmental Authorisation (EA) Process for the proposed project. This SER was compiled as part of the EA Process and must be read in conjunction with the applicable BA and Scoping Reports in support of the EA applications. **Table 1-2** details the relevant contact details of the EAP.

**Table 1-2 – Details of the EAP**

<b>EAP:</b>	<b>WSP Group Africa (Pty) Ltd</b>
<b>Contact Person:</b>	Ashlea Strong
<b>Physical Address:</b>	Building C, Knightsbridge, 33 Sloane Street, Bryanston, Johannesburg
<b>Postal Address:</b>	P.O. Box 98867, Sloane Park 2151, Johannesburg
<b>Telephone:</b>	011 361 1392
<b>Fax:</b>	011 361 1301
<b>Email:</b>	Ashlea.Strong@wsp.com
<b>EAP Qualifications:</b>	<ul style="list-style-type: none"><li>■ Masters in Environmental Management, University of the Free State</li><li>■ B Tech, Nature Conservation, Technikon SA</li><li>■ National Diploma in Nature Conservation, Technikon SA</li></ul>

To adequately identify and assess potential environmental impacts, the EAP was supported by a number of specialists, the details of which are provided in the applicable BA and Scoping Reports.

## STATEMENT OF INDEPENDENCE

Neither WSP nor any of the authors of this Report have any material present or contingent interest in the outcome of this Report, nor do they have any business, financial, personal or other interest that could be reasonably regarded as being capable of affecting their independence. WSP has no beneficial interest in the outcome of the assessment.

## 1.4 PUBLIC PARTICIPATION

Public participation is understood to be a series of inclusive and culturally appropriate interactions aimed at providing stakeholders with opportunities to express their views, so that these can be considered and incorporated into the decision-making process. Effective public participation requires the prior disclosure of relevant and adequate project information to enable stakeholders to understand the risks, impacts, and opportunities of the proposed Project.

Basic reasons why the public are involved in the PPP:

- The environment is held in public trust; therefore, use of environmental resources is everyone's concern;
- To ensure that projects meet the citizens' needs and are suitable to the affected public;
- The project carries more legitimacy, and less hostility, if interested and affected parties (I&APs) are able to influence the decision-making process; and
- The final decision is deemed informed when local knowledge and values are included and when expert knowledge is publicly examined.

### 1.4.1 OBJECTIVES

The objectives of the PPP can be summarised as follows:

- Identify relevant individuals, organisations and communities who may be interested in or affected by the proposed Project;
- Clearly outline the scope of the proposed Project, including the scale and nature of the existing and proposed activities;
- Identify viable proposed Project alternatives that will assist the relevant authorities in making an informed decision;
- Identify shortcomings and gaps in existing information;
- Identify key concerns, raised by I&APs that should be addressed in the subsequent specialist studies;
- Highlight the potential for environmental impacts, whether positive or negative; and
- To inform and provide the public with information and an understanding of the proposed Project, issues and solutions.

### 1.4.2 WHAT IS AN INTERESTED AND AFFECTED PARTY

An I&AP is defined as any person, group of persons or organisations interested in or affected by an activity, and any organ of state that may have jurisdiction over any aspect of the activity.

The difference between an I&AP and a registered I&AP:

- An I&AP can be directly or indirectly impacted on by a proposed activity.
- A registered I&AP is a person whose name has been placed on the register of registered I&APs. According to the PPP Guidance document, 2017, only registered I&APs will be notified:
  - Of the availability of reports and other written submissions made to the Competent Authority (CA) by the Applicant, and be entitled to comment on these reports and submissions; and
  - Of the outcome of the application, the reasons for the decision, and that an appeal may be lodged against a decision.

For the purpose of this report, registered I&APs will be referred to as Stakeholders.

### **Rights, Roles and Responsibilities of the Stakeholders**

Stakeholders have the right to bring to the attention of the CA any issues that they believe may be of significance to the consideration of the application. The rights of stakeholder are qualified by certain obligations, namely:

- Stakeholders must ensure that their comments are submitted within the timeframes that have been approved by the Department of Forestry, Fisheries and Environment (DFFE), or within any extension of a timeframe agreed by the Proponent, EAP or competent authorities;
- Serve a copy of the comments submitted directly to the competent authorities, the Proponent or the EAP; and
- Disclose to the EAP any direct business, financial, personal or other interest that they might have in the approval or refusal of the application.

The roles of stakeholders in a public participation process usually include one or more of the following:

- Assisting in the identification and prioritisation of issues that need to be investigated;
- Making suggestions on alternatives and means of preventing, minimising and managing negative impacts and enhancing proposed Project benefits;
- Assisting in or commenting on the development of mutually acceptable criteria for the evaluation of decision options;
- Contributing information on public needs, values and expectations;
- Contributing local and traditional knowledge; and
- Verifying that their issues have been considered.

In order to participate effectively, stakeholders should:

- Become involved in the process as early as possible;
- Advise the EAP of other stakeholders who should be consulted;
- Contribute towards the design of the public participation process (including timeframes) to ensure that it is acceptable to all stakeholders;
- Follow the process once it has been accepted;
- Read the material provided and actively seek to understand the issues involved;
- Give timeous responses to correspondence;
- Be respectful and courteous towards other stakeholders;
- Refrain from making subjective, unfounded or ill-informed statements; and
- Recognise that the process is confined to issues that are directly relevant to the application.



## 1.5 APPROACH TO STAKEHOLDER ENGAGEMENT

Our approach to stakeholder engagement is based on the following principles:

- Undertake meaningful and timely participation with stakeholders;
- Focus on important issues during the process;
- Undertake due consideration of alternatives;
- Take accountability for information used;
- Encourage co-regulation, shared responsibility and a sense of ownership over the proposed Project lifecycle;
- Apply “due process” particularly with regard to public participation as provided for in the EIA Regulations; and
- Consider the needs, interests and values of stakeholders.

The Public Participation guideline in terms of the NEMA EIA Regulations, drafted by the Department of Environmental Affairs (DEA) (now DFFE) in 2017, tabulates the level of Public Participation required for various levels of anticipated project impacts. This table has been used to identify additional Public Participation methods which are required for the Project. Highlighted cells (red) indicate the applicable response to the anticipated impacts. Results of the process are shown in **Table 1-3**.

**Table 1-3 – Level of Public Participation as per Public Participation Guideline (DEA, 2017)**

Scale of Anticipated Impacts	Recommended Response	
	If “Yes”	If “No”
Are the impacts of the project likely to extend beyond the boundaries of the local municipality?	Formal Consultation with other affected municipalities should be carried out during the PPP.	No need to have a formal consultation with other municipalities during PPP.  Minimum requirements for public participation in accordance with EIA must be met.
Are the impacts of the project likely to extend beyond the boundaries of the province?	Formal Consultation with other affected provinces should be carried out during the PPP.	No need to have a formal consultation with other provinces during PPP.  Minimum requirements for public participation in accordance with EIA must be met.
Is the project a greenfields development (a new development in a previously undisturbed area)?	Extensive consultation with Registered Interested and Affected Parties (RI&APs) might be required before a decision is taken on the project to in order to gather more information, and to ensure that there is minimal impact on the environment.	Minimum requirements for public participation in accordance with EIA Regulations must be met.

<b>Does the area already suffer from socio-economic problems (e.g. job losses) or environmental problems (e.g. pollution), and is the project likely to exacerbate these?</b>	Extensive consultation with RI&APs within the area should be undertaken, to gather more information on both the socio-economic and environmental problems.	Minimum requirements for public participation in accordance with EIA Regulations must be met.
<b>Is the project expected to have a wide variety of impacts (e.g. socio-economic and ecological)?</b>	Thorough consultation needs to be conducted with RI&APs, in order to address variety of impacts.	Minimum requirements for public participation in accordance with EIA Regulations must be met.
<b>Public and environmental sensitivity of the project:</b>		
<b>Are there widespread public concerns about the potential negative impacts of the project?</b>	Broader consultation with all RI&APs will need to be undertaken.	Minimum requirements for public participation in accordance with EIA Regulations must be met.
<b>Is there a high degree of conflict among RI&amp;APs?</b>	There might need to be more consultation to ensure that there is consensus reached among RI&APs.	Minimum requirements for public participation in accordance with EIA Regulations must be met.
<b>Will the project impact on private land other than that of the applicant?</b>	Consultation with the private landowner must be done, and all their concerns need to be addressed.	Minimum requirements for public participation in accordance with EIA Regulations must be met.
<b>Does the project have the potential to create unrealistic expectations (e.g. that a new factory would create a large number of jobs)?</b>	Thorough consultation that addresses the perceptions of unrealistic expectations needs to be carried out.	Minimum requirements for public participation in accordance with EIA Regulations must be met.
<b>Potentially affected parties:</b>		
<b>Has very little previous public participation taken place in the area?</b>	More thorough public participation should take place within the area, to ensure that all potential and RI&APs participate.	Minimum requirements for public participation in accordance with EIA Regulations must be met.
<b>Did previous public participation processes in the area result in conflict?</b>	Additional consultation might be needed to ensure that issues of conflict are addressed effectively.	Minimum requirements for public participation in accordance with EIA Regulations must be met.
<b>Are there existing organisational structures (e.g. local forums) that can represent I&amp;APs?</b>	Organizational structures might minimise conflict whilst maximising the participation.	Minimum requirements for public participation in accordance with EIA Regulations must be met.
<b>Is the area characterised by high social diversity (i.t.o. socio-economic status, language or culture)?</b>	Proper consultations that address language and cultural diversity should be promoted.	Minimum requirements for public participation in accordance with EIA Regulations must be met.

<p><b>Were people in the area victims of unfair expropriations or relocation in the past?</b></p>	<p>PPP should be extensive and address any unfair practices that occurred in the past.</p>	<p>Minimum requirements for public participation in accordance with EIA Regulations must be met.</p>
<p><b>Is there a high level of unemployment in the area?</b></p>	<p>The PPP should ensure that there are no unrealistic expectations created due to the project. The consultation should ensure that any unrealistic expectations are adequately addressed before the project starts.</p>	<p>Minimum requirements for public participation in accordance with EIA Regulations must be met.</p>
<p><b>Do the RI&amp;APs have special needs (e.g. a lack of skills to read or write, disability, etc)?</b></p>	<p>Consultation should include mechanisms that will ensure full participation by people with special needs.</p>	<p>Minimum requirements for public participation in accordance with EIA Regulations must be met. Minimum requirements for PP in accordance with the Act must be met as well as best practices relating to PP.</p>

## 2 PUBLIC PARTICIPATION TO DATE

### 2.1 PRE-APPLICATION CONSULTATION

A pre-application meeting was held on **22 September 2022** with the DFFE in order to discuss the proposed Project. The minutes of this meeting and approval from the DFFE are included in **Appendix C.1**.

### 2.2 IDENTIFICATION OF KEY STAKEHOLDERS

Section 41 of the EIA Regulations (2014, as amended) states that written notices must be given to identified stakeholders as outlined in **Table 2-1**.

Relevant authorities (Organs of State) have been automatically registered as stakeholders. In accordance with the EIA Regulations, 2014 (as amended), all other persons must request in writing to be placed on the register, submit written comments, or attend meetings to be registered as stakeholders, and included in future communication regarding the Project.

**Table 2-1 – Interested and Affected Parties**

NEMA Requirement	Discussion
(i) the owner or person in control of that land if the applicant is not the owner or person in control of the land	<p>The project activity is located on various portions of privately owned land. The landowners have been included on the stakeholder database. The land portions associated with the Mura PV Development include:</p> <ul style="list-style-type: none"> <li>■ Leeuwkloof Farm 43</li> <li>■ Bultfontein Farm 13</li> <li>■ Portion 4 of Duiker Kranse Farm 45</li> <li>■ RE of Portion 3 of Duiker Kranse Farm 45</li> <li>■ Bultfontein Farm 12</li> <li>■ Aangrensend Abramskraal Farm 11</li> <li>■ RE of Abrams Kraal Farm 206</li> <li>■ Sneeuwkraal Farm 46</li> <li>■ RE of Duiker Kranse Farm 45</li> <li>■ Portion 2 of Paardeberg Farm 49</li> </ul>
(ii) the occupiers of the site where the activity is or is to be undertaken or to any alternative site where the activity is to be undertaken	All landowners have been contacted to confirm whether there are any occupiers on the land portions. Where applicable, occupiers have been included on the database.
(iii) owners and occupiers of land adjacent to the site where the activity is or is to be undertaken or to any alternative site where the activity is to be undertaken	Adjacent landowner details were collected and have been included on the stakeholder database. Where applicable, occupiers have been included on the database.
(iv) the municipal councillor of the ward in which the site or alternative site is situated and any organisation of ratepayers that represent the community in the area	Ward Councillors of Ward 7 (Beaufort West Local Municipality) and Ward 3 (Ubuntu Local Municipality) have been included on the stakeholder database.



NEMA Requirement	Discussion
(v) the municipality which has jurisdiction in the area	The project is located in Beaufort West Local Municipality and Ubuntu Local Municipality located within the Central Karoo District Municipality and Pixley ka Seme District Municipality. Both Local and District Municipalities have been included on the stakeholder database.
(vi) any organ of state having jurisdiction in respect of any aspect of the activity	DFFE has been, and will continue to be, consulted. The Western Cape Department of Environmental Affairs and Development Planning (WC DEADP) and Northern Cape Department of Environment and Nature Conservation (NC DENC) have been included on the stakeholder database.
(vii) any other party as required by the competent authority.	<p>All tiers of government, namely, national, provincial, local government and parastatals have been included on the stakeholder database. Inclusive of:</p> <ul style="list-style-type: none"> <li>■ DFFE;</li> <li>■ Department of Water and Sanitation (DWS);</li> <li>■ Department of Mineral Resources and Energy (DMRE);</li> <li>■ Department of Agriculture, Land Reform and Rural Development (DALRRD);</li> <li>■ Department of Public Works;</li> <li>■ Department of Defence;</li> <li>■ National Department of Transport;</li> <li>■ South African National Roads Agency Limited (SANRAL);</li> <li>■ South African Heritage Resources Agency (SAHRA);</li> <li>■ South African Civil Aviation Authority (CAA);</li> <li>■ Square Kilometre Array (SKA);</li> <li>■ South African Weather Service (SAWS);</li> <li>■ Beaufort West Local Municipality;</li> <li>■ Ubuntu Local Municipality;</li> <li>■ Central Karoo District Municipality;</li> <li>■ Pixley ka Sema District Municipality;</li> <li>■ WC DEADP;</li> <li>■ Heritage Western Cape (HWC);</li> <li>■ Northern Cape Department of Agriculture, Land Reform and Rural Development (NC DALRRD);</li> <li>■ NC DENC;</li> <li>■ Northern Cape Heritage Resources Authority;</li> <li>■ BirdLife South Africa;</li> <li>■ CapeNature;</li> <li>■ Endangered Wildlife Trust; and</li> <li>■ South African National Parks.</li> </ul> <p>For a full list of registered stakeholders please refer to <b>Appendix A</b>.</p>

**Appendix A** provides a list of stakeholders registered on the Project database. The stakeholder database will be updated throughout the EA process.

## 2.3 NOTIFICATION PROCEDURES

### AUTHORITY CONSULTATION

A pre-application meeting was held on **22 September 2022** with the DFFE in order to discuss the proposed Project. The minutes of this meeting and approval from the DFFE are included in **Appendix C.1**.

### DIRECT NOTIFICATION

Notification of the proposed Project will be issued to potential and existing Stakeholders, via direct correspondence (i.e., site notices, emails, SMSes, etc.). Proof of notification will be included in the SER post the public review period.

### NEWSPAPER ADVERTISEMENTS

In accordance with the requirements of GNR 982, as amended, the proposed project will be advertised in two local newspapers. The purpose of the advertisement is to notify the public about the proposed project and to invite them to register as stakeholders. A copy of the advertisement is included in **Appendix B.1**. The advertisement publication details are provided in **Table 2-2**. Proof of placement will be included in the SER post the public review period.

**Table 2-2 – Dates on which the advert will be published**

Newspaper	Distribution Area	Language	Publication Date
Die Burger	Western Cape	Afrikaans	TBC
Die Courier	Beaufort West, Prince Albert, Leeu-Gamka, Nelspoort, Murraysburg, Laingsburg, Victoria West, Merweville	English	TBC
Victoria Messenger	Loxton, Victoria West, Vosburg	Afrikaans	TBC

### SITE NOTICES

In accordance with GNR 326 Section 41(2)(a-b) site notices have been developed (see **Appendix B-2**) and will be placed at strategic points in close proximity to the proposed Project site, as well as in public places within Beaufort West Local Municipality and Ubuntu Local Municipality. Proof of placement will be included in the SER post the public review period.

### AVAILABILITY OF THE DRAFT BA AND SCOPING REPORTS

The Draft BA and Scoping Reports will be placed on public review for a period of at least 30 days from **06 March 2023 to 06 April 2023**, at the venues as follows:

- Hard Copy: Beaufort West Public Library;
- Hard Copy: Klein Karoo Agri;
- Hard Copy: Loxton Library;
- Electronic Copy: WSP Website (<https://www.wsp.com/en-ZA/services/public-documents>); and
- Electronic Copy: Datafree Website (<https://wsp-engage.com/>).



The Draft Reports were also made available to Commenting Authorities via a One Drive link ([Mura PV Development - Public Review](#)).

In order to ensure maximum participation of all I&APs, reports will be shared on the Datafree website as well as an audio presentation.

## **2.4 STAKEHOLDER REGISTRATION**

All I&APs that either call in or send written correspondence, such as emails, fax, or post, to the EAP will be added to the database and their comments and/or queries will be responded to.

## **2.5 COMMENTS RECEIVED**

All concerns, comments, viewpoints, and questions (collectively referred to as 'issues') received during the comment period will be documented and responded to adequately in a Comments and Responses table. No comments have been received to date.

# Appendix A

## STAKEHOLDER DATABASE



Type	Org / Entity / Property	Full name & Surname	Email
Authority	Air Traffic and Navigation Services (ATNS)	Carel Gersbach	
Authority	Air Traffic and Navigation Services (ATNS)	Matthys Horak	
Authority	Beaufort West Local Municipality	Administration	
Authority	Beaufort West Local Municipality	All Council Members	
Authority	Beaufort West Local Municipality	Ashley Mitchell	
Authority	Beaufort West Local Municipality	Christo de Koker	
Authority	Beaufort West Local Municipality	Christopher Wright	
Authority	Beaufort West Local Municipality	Directors	
Authority	Beaufort West Local Municipality	Dons le Roux	
Authority	Beaufort West Local Municipality	Jason Mdudumani	
Authority	Beaufort West Local Municipality	Josias De Kock Reynolds	
Authority	Beaufort West Local Municipality	Lewellyn Lakay	
Authority	Beaufort West Local Municipality	MJ (Jackson) Penxa	
Authority	Beaufort West Local Municipality	Petrus Strumpher	
Authority	Beaufort West Local Municipality	Ralph Skuza	
Authority	Beaufort West Local Municipality	Roelof van Rensburg	
Authority	Beaufort West Local Municipality	Valencia Godfrey	
Authority	Beaufort West Local Municipality	Vuyokazi Ruiters	
Authority	Beaufort West Municipality	Christopher Wright	
Authority	Breede-Gouritz Catchment Management Area (BGCMA)	John Sibanyoni	
Authority	Breede-Gouritz Catchment Management Area (BGCMA)	Zama Mbunquka	
Authority	CapeNature Land Use Advice: George Office	Megan Simons	
Authority	CapeNature: Land Use Advice	Colin Fordham	
Authority	Central Karoo District Municipality	Andre Koopman	
Authority	Central Karoo District Municipality	Barbara Brown	
Authority	Central Karoo District Municipality	Gayton McKenzie	
Authority	Central Karoo District Municipality	Gerrit van Zyl	
Authority	Central Karoo District Municipality	Kobus Theron	
Authority	Central Karoo District Municipality - The Regional Tourism Office for the Central Karoo District Municipality	Dr. L. Links (Acting)	
Authority	DEA&DP: Department of Environmental Affairs and Development Planning	Francois Naude	
Authority	DEA&DP: Department of Environmental Affairs and Development Planning	Jessica Christie	
Authority	DEA&DP: Directorate: Development Facilitation	Adri La Meyer	
Authority	DEFF:Biodiversity&Conservation	Aulicia Maifo (Ms)	

Authority	DEFF:Biodiversity&Conservation	Portia Makitla (Ms)	
Authority	Department of Agriculture Landform and Rural Development	Mashudu Marubini	
Authority	Department of Environment and Nature Conservation	Natalie Uys	
Authority	Department of Environmental Affairs: Directorate: Biodiversity	Stanley Tshitwamulomoni	
Authority	Department of Environmental Affairs: Protected areas	Karl Naude	
Authority	Department of Mineral Resources	Morne Koen	
Authority	Department of Mineral Resources and Energy	Luzuko Nxantsiya	
Authority	Department of Mineral Resources and Energy	Morne Koen	
Authority	Department of Public Works	Basson Geldenhuys	
Authority	Department of Public Works	Nomonde Khuzwayo	
Authority	Department of Public Works	Singatha Maholwana	
Authority	Department of Water and Sanitation (DWS) Northern Cape	Khitjo Sekwaila	
Authority	Department of Water and Sanitation (DWS) Northern Cape	Refilwe Damane	
Authority	DFFE: Directorate: Biodiversity Conservation	Mr Seoka Lekota	
Authority	DWS	Ncamile Dweni	
Authority	Heritage Western Cape	Ayanda Mdludlu	
Authority	Mzimvubu-Tsitsikamma Water Management Area	Lebelo Miki	
Authority	Mzimvubu-Tsitsikamma Water Management Area	Lizna Fourie	
Authority	Mzimvubu-Tsitsikamma Water Management Area	Ntombiyamayira Mpumela	
Authority	Mzimvubu-Tsitsikamma Water Management Area	Portrait Tshatshu	
Authority	National Department of Agriculture, Forestry and Fisheries	Annette Stoltz	
Authority	National Department of Agriculture, Forestry and Fisheries	Lydia Bosoga	
Authority	National Department of Agriculture, Forestry and Fisheries	Mashudu Marubini	
Authority	National Department of Agriculture, Forestry and Fisheries	Serah Muobeleni	
Authority	National Department of Agriculture, Forestry and Fisheries	Thoko Buthelezi	
Authority	National Department of Agriculture, Forestry and Fisheries	Zweli Shilangwe	
Authority	National Department of Energy	Ompi Aphane	
Authority	National Department of Transport (DoT)	Sam Monareng	
Authority	National Department of Water and Sanitation (DWS)	Deborah Mochotlhi	
Authority	NC Department of Environment and Nature Conservation	Onwabile Ndzumo	
Authority	NERSA (National Energy Regulator of South Africa)	NERSA	
Authority	Ngwao-Boswa Ya Kapa Bokone (Northern Cape Provincial		
Authority	Northern Cape Department of Agriculture, Land Reform &	Wonders Dimakatso Viljoen Mothibi	
Authority	Northern Cape Department of Economic Development and Tourism	Patrick Seboko	
Authority	Northern Cape Department of Environment and Nature	Bryan Fisher	
Authority	Northern Cape Department of Environment and Nature	Conrad Geldenhuys	
Authority	Northern Cape Department of Environment and Nature Conservation	Elsabe Swart	

Authority	Northern Cape Department of Environment and Nature Conservation	Peter Cloete	
Authority	Northern Cape Department of Roads and Public Works	Kholikile Nogwili	
Authority	Northern Cape Department: Agriculture, Environmental Affairs, Rural Development and Land Reform	Beanca Botes	
Authority	Northern Cape Department: Agriculture, Environmental Affairs, Rural Development and Land Reform	Brenda Saane	
Authority	Northern Cape Department: Agriculture, Environmental Affairs, Rural Development and Land Reform	Kabelo Mohibidu	
Authority	Northern Cape Department: Agriculture, Environmental Affairs, Rural Development and Land Reform	Lerato Wa Modise	
Authority	Northern Cape Department: Agriculture, Environmental Affairs, Rural Development and Land Reform	Mase Manopole	
Authority	Northern Cape Department: Agriculture, Environmental Affairs, Rural Development and Land Reform	Mr K Mlambo	
Authority	Northern Cape Department: Agriculture, Environmental Affairs, Rural Development and Land Reform	Mr M Ndzilili	
Authority	Northern Cape Department: Agriculture, Environmental Affairs, Rural Development and Land Reform	Mr T Sibhono	
Authority	Northern Cape Department: Agriculture, Environmental Affairs, Rural Development and Land Reform	<a href="#">Ms T Wessels</a>	
Authority	Northern Cape Department: Agriculture, Environmental Affairs, Rural Development and Land Reform	Ms Y Louw	
Authority	Northern Cape Department: Agriculture, Environmental Affairs, Rural Development and Land Reform	Ms Z Mgorosi	
Authority	Northern Cape Economic Development Agency	Bernard Mabele	
Authority	Pixley Ka Seme District Municipality	A Sibeko	
Authority	Pixley Ka Seme District Municipality	Asanda Sibeko	
Authority	Pixley Ka Seme District Municipality	Beatrice Bosch	
Authority	Pixley Ka Seme District Municipality	HP Greef	
Authority	Pixley Ka Seme District Municipality	Rhoo de Itumeleng	
Authority	Pixley Ka Seme District Municipality	TA Loko	
Authority	SANRAL	Shaun Dyers	
Authority	SANRAL Western Region	Randall Smuts	
Authority	South African Civilian Aviation Authority	Lizell Stroh	
Authority	South African Civilian Aviation Authority	Lizell Strohl	
Authority	South African National Parks (SANParks)	Maretha Alant	

Authority	South African National Parks (SANParks)	Nico van der Walt	
Authority	South African National Roads Agency (SANRAL)	Nicole Abrahams	
Authority	Square Kilometre Array (SKA)	Adrian Tiplady	
Authority	Ubuntu Local Municipality	Dibere Maposa	
Authority	Ubuntu Local Municipality	Miem Maans	
Authority	Ubuntu Local Municipality	Miem Maans	
Authority	Ubuntu Local Municipality	Nonceba Mkontwana	
Authority	Ubuntu Local Municipality	Vacant	
Authority	Ubuntu Local Municipality	Zandile Seloane	
Authority	WC DEA&DP: Department of Environmental Affairs and	Annelize de Villiers	
Authority	WC DEA&DP: Department of Environmental Affairs and	Danie Swanepoel	
Authority	WC DEA&DP: Department of Environmental Affairs and	Dorien Werth	
Authority	WC DEA&DP: Department of Environmental Affairs and	Gavin Benjamin	
Authority	WC DEA&DP: Department of Environmental Affairs and Development Planning	Malcolm Fredericks	
Authority	WC: Department of Agriculture: Land Use Management	Brandon Layman (Mr)	
Authority	Western Cape Department of Environmental Affairs and Development Planning (DEA&DP)	Zaahir Toefy	
Authority	Western Cape Department of Environmental Affairs and Development Planning (DEA&DP) - George Office	Gavin Benjamin	
Authority	Western Cape Department of Environmental Affairs and Development Planning (DEA&DP) - George Office	Réanda Pretorius	
Authority	Western Cape Department of Agriculture	Cor van der Walt	
Authority	Western Cape Department of Agriculture	Cor van der Walt	
Authority	Western Cape Department of Agriculture	Phyllis Pienaar	
Authority	Western Cape Department of Agriculture, Forestry and	Thando Ndudula	
Authority	Western Cape Department of Rural Development and Land	Wayne Alexander	
Authority	Western Cape Department of Transport and Public Works	Carinne Muller	
Authority	Western Cape Department of Transport and Public Works	Carinne Muller	
Authority	Western Cape Department of Transport and Public Works	Jacqui Gooch	
Authority	Western Cape Department of Transport and Public Works	Juan Prodehl	
Authority	Western Cape Department of Transport and Public Works	Juan Prodehl	
Authority	Western Cape Department of Transport and Public Works	Llewellyn Truter	
Authority	Western Cape Department of Transport and Public Works	Stephanus Schoeman	
Authority	Western Cape Department of Transport and Public Works	Xander Smuts	
Authority	Western Cape Department of Transport and Public Works:	Lyle Martin	
Authority	Western Cape Department of Transport and Public Works:	Evan Burger	
Authority	Western Cape Department of Transport and Public Works:	Devlin Fortuin	
Landowner	Aangrensend Abramskraal Farm 11	Hendrik Kotze	



Landowner	Bultfontein Farm 12	Hendrik Kotze	
Landowner	Bultfontein Farm 13	Hendrik Kotze	
Landowner	Leeuwkloof Farm 43	Pottie Potgieter	
Landowner	Portion 2 of Paardeberg Farm 49	George (Okkie) Jacob Wiehahn	
Landowner	Portion 4 of Duiker Kranse Farm 45	Pottie Potgieter	
Landowner	RE of Abrams Kraal Farm 206	George (Okkie) Jacob Wiehahn	
Landowner	RE of Duiker Kranse Farm 45	David Jack	
Landowner	RE of Portion 3 of Duiker Kranse Farm 45	David Jack	
Landowner	Sneeuwkraal Farm 46	Andrew Jack	
Occupier	Portion 2 of Paardeberg Farm 49	Mr Chris Kruger	
Occupier	Portion 2 of Paardeberg Farm 49	Mr Daniel Saalmans	
Occupier	Portion 2 of Paardeberg Farm 49	Mr Salmon Jooste	
Occupier	Portion 4 of Duiker Kranse Farm 45	Mr Andries Wewers	
Occupier	Portion 4 of Duiker Kranse Farm 45	Mr Clive de Wee	
Occupier	Portion 4 of Duiker Kranse Farm 45	Mr Elvis Voorman and Ms Mickey Blom	
Occupier	Portion 4 of Duiker Kranse Farm 45	Mr Freek Moos and Ms Roseline Carelse	
Occupier	Portion 4 of Duiker Kranse Farm 45	Ms Felicity Frieslaar	
Adjacent Landowner	Bronkers Valei		
Adjacent Landowner	Gans Fontein		
Adjacent Landowner	Gans Fontein		
Adjacent Landowner	Gans Fontein		
Adjacent Landowner	Gansfontein Annexe		
Adjacent Landowner	Gert Adriaans Kraal		
Adjacent Landowner	Kaffers Kraal		
Adjacent Landowner	Lapfontein		
Adjacent Landowner	Paardeberg		
Adjacent Landowner	Paardeberg		
Adjacent Landowner	Paardeberg		
Adjacent Landowner	Quagga Fontein		
Adjacent Landowner	Snyderfontein		
Adjacent Landowner	Snyderfontein		
Adjacent Landowner	Spits Kop		
Adjacent Landowner	Vlak Fontein		
I&AP	Eskom Beaufort West	Andre Minnie	
I&AP	Eskom Beaufort West	Andre Minnie	
I&AP	Eskom Beaufort West	Hein Olivier	
I&AP	Eskom Beaufort West: Transmission Western Grid	Pierre Snyman	
NPO	Agri Northern Cape	Marian	
NPO	Agri Northern Cape		
NPO	Agri Western Cape		
NPO	Endangered Wildlife Trust (EWT)	Lourens Leeuwner	

NPO	EWT	Bonnie Schumann	
NPO	EWT	Johan Du Plessis	
NPO	EWT	Lourens Leeuwner	
NGO	BirdLife South Africa	Samantha Ralston-Paton	
Stakeholder	South African Radio Astronomy Observatory (SARAO)	Thato Nape	

# Appendix B

## NOTIFICATIONS



# Appendix B.1

**NEWSPAPER ADVERT**



## ENVIRONMENTAL AUTHORISATION PROCESSES

### NOTICE OF THE PROPOSED DEVELOPMENT OF THE MURA PHOTOVOLTAIC DEVELOPMENT BETWEEN LOXTON AND BEAUFORT WEST IN THE WESTERN CAPE AND NORTHERN CAPE PROVINCES

Notice is given in terms of Regulation 41(2) of GNR 982, as amended published under section 24 and 24D of the National Environmental Management Act (No. 107 of 1998) (NEMA) as amended for submission of applications for Environmental Authorisations (EA) in respect of the Environmental Impact Assessment Regulations activities identified in terms of GNR 983 (as amended), GNR 984 (as amended) and GNR 985 (as amended)

#### DESCRIPTION AND LOCATION

Red Cap Energy is proposing to develop four solar facilities, namely Mura 1, Mura 2, Mura 3, and Mura 4, and an associated grid connection, collectively known as the Mura PV Development between Loxton and Beaufort West in the Beaufort West Local Municipality and Ubuntu Local Municipality and the Central Karoo District Municipality and Pixley ka Seme District Municipality in the Western Cape and Northern Cape Provinces. The proposed Mura PV Development is located in close proximity to the approved Nuweveld Wind Farm Development. The proposed authorisations include the following Basic Assessment (BA) and Scoping and Environmental Impact Reporting (S&EIR) processes:

Proponent	Project	Technology	Process	Farm Names
Mura 1 (Pty) Ltd	Up to 150 MW Solar Energy Facility (SEF) including associated infrastructure	Solar Photovoltaic (PV)	BA*	<ul style="list-style-type: none"> <li>• Leeuwkloof Farm 43</li> <li>• Portion 4 of Duiker Kranse Farm 45</li> </ul>
	Up to 132 kV Mura Electrical Grid Infrastructure (EGI) Corridor	Transmission Line	BA*	<ul style="list-style-type: none"> <li>• Leeuwkloof Farm 43</li> <li>• Bultfontein Farm 13</li> <li>• Portion 4 of Duiker Kranse Farm 45</li> <li>• RE of Portion 3 of Duiker Kranse Farm 45</li> <li>• Bultfontein Farm 12</li> <li>• Aangrensend Abramskraal Farm 11</li> <li>• RE of Abrams Kraal Farm 206</li> <li>• Sneeuwkraal Farm 46</li> <li>• RE of Duiker Kranse Farm 45</li> <li>• Portion 2 of Paardeberg Farm 49</li> </ul>
Mura 2 (Pty) Ltd	Up to 400 MW SEF including associated infrastructure	Solar PV	S&EIR	<ul style="list-style-type: none"> <li>• Leeuwkloof Farm 43</li> <li>• Bultfontein Farm 13</li> <li>• Portion 4 of Duiker Kranse Farm 45</li> </ul>
Mura 3 (Pty) Ltd	Up to 320 MW SEF including associated infrastructure	Solar PV	S&EIR	<ul style="list-style-type: none"> <li>• Leeuwkloof Farm 43</li> <li>• RE of Abrams Kraal Farm 206</li> <li>• Portion 4 of Duiker Kranse Farm 45</li> <li>• RE of Portion 3 of Duiker Kranse Farm 45</li> <li>• RE of Duiker Kranse Farm 45</li> <li>• Sneeuwkraal Farm 46</li> <li>• Aangrensend Abramskraal Farm 11</li> </ul>
Mura 4 (Pty) Ltd	Up to 360 MW SEF including associated infrastructure	Solar PV	S&EIR	<ul style="list-style-type: none"> <li>• Leeuwkloof Farm 43</li> <li>• Aangrensend Abramskraal Farm 11</li> <li>• Portion 4 of Duiker Kranse Farm 45</li> <li>• RE of Portion 3 of Duiker Kranse Farm 45</li> <li>• RE of Duiker Kranse Farm 45</li> <li>• Sneeuwkraal Farm 46</li> </ul>

\* falls within the Beaufort West Renewable Energy Development Zones (REDZ)

#### ENVIRONMENTAL APPLICATIONS

The following listed activities associated with the Proposed Projects are triggered:

Project	Listing Notices
<ul style="list-style-type: none"> <li>• Mura 1</li> <li>• Mura 2</li> <li>• Mura 3</li> <li>• Mura 4</li> </ul>	<ul style="list-style-type: none"> <li>• NEMA EIA Regulations: Listing Notice 1 (GNR 983, as amended): Activity 11(i), 12(ii)(a)(c), 14, 19, 28(ii) and 56(ii);</li> <li>• NEMA EIA Regulations: Listing Notice 2 (GNR 984, as amended): Activity 1 and 15;</li> <li>• NEMA EIA Regulations: Listing Notice 3 (GNR 985, as amended): Activity 4 (ii)(aa), 12 (i)(ii), 14 (ii)(a)(c) (i)(ii)(ff), 18 (i)(ii)(aa) and 23 (ii)(a) (i)(i)(ff).</li> </ul>
<ul style="list-style-type: none"> <li>• Mura EGI</li> </ul>	<ul style="list-style-type: none"> <li>• NEMA EIA Regulations: Listing Notice 1 (GNR 983, as amended): Activity 11(i), 12(ii)(a)(c), 14, 19, 27(i) and 28(ii);</li> <li>• NEMA EIA Regulations: Listing Notice 3 (GNR 985, as amended): Activity 12 (i)(ii) and 14 (ii)(a)(c) (i)(ii)(ff).</li> </ul>

#### DRAFT BASIC ASSESSMENT AND DRAFT SCOPING REPORT REVIEW PERIOD

An integrated Public Participation Process is proposed for the above-mentioned projects. The Draft Environmental Basic Assessment and Scoping Reports will be made available from WSP on request and/or at the venues below for review and comment for 30 days from **06 March 2023 to 06 April 2023**.

Area	Venue	Street Address	Contact No
Beaufort West	Beaufort West Public Library	Corner of Bird Street and Church Street	023 414 8113
	Klein Karoo Agri	80 Donkin Street	023 415 1199
Loxton	Loxton Library	Margaretha Prinsloo Street, Loxton	053 381 3102
WSP Website	<a href="https://www.wsp.com/en-ZA/services/public-documents">https://www.wsp.com/en-ZA/services/public-documents</a>		
Datafree Website	<a href="https://wsp-engage.com/">https://wsp-engage.com/</a>		

#### REGISTRATION

WSP Group Africa (Pty) Ltd (WSP) has been appointed as the independent Environmental Assessment Practitioner (EAP) by Red Cap Energy (Pty) Ltd, to manage the respective BA and S&EIR processes. Parties wishing to formally register as stakeholders in order to offer their comment on the Proposed Projects are requested to forward their full contact details to the EAP at the details provided below. Registered stakeholders will be forwarded all future correspondence and notified individually of additional opportunities to participate in the process.

EAP Details: Megan Govender (T) 011 361 1410 (E) Megan.Govender@wsp.com (A) PO Box 98867, Sloane Park, 2152



WSP will be processing certain personal information about you as an I&AP for purposes of enabling your registration as an I&AP and for purposes of storing your details on our database, if you consent for us to do so. WSP uses these details to contact you about other projects in the future. WSP will always process your personal information in accordance with the Protection of Personal Information Act 4 of 2013. You are entitled to exercise your rights as a data subject and let us know if you wish to be deregistered as an I&AP or if you no longer want your contact details to be included on our database.

## OMGEWINGSMAGTIGINGSPROSESSE

### KENNISGEWING VAN DIE VOORGESTELDE ONTWIKKELING VAN DIE MURA FOTOVOLTAÏESE ONTWIKKELING TUSSEN LOXTON EN BEAUFORT-WES IN DIE WES-KAAP EN NOORD-KAAP PROVINSIES

Kennis word gegee ingevolge Regulasie 41(2) van GNR 982, soos gewysig, gepubliseer kragtens artikel 24 en 24D van die Wet op Nasionale Omgewingsbestuur (No. 107 van 1998) (NEMA) soos gewysig vir die indiening van aansoeke om Omgewingsmagtigings (EA) ten opsigte van die Omgewingsimpakbepalingsregulasies aktiwiteite geïdentifiseer ingevolge GNR 983 (soos gewysig), GNR 984 (soos gewysig) en GNR 985 (soos gewysig)

#### BESKRYWING EN LIGGING

Red Cap Energy stel voor om vier sonkragfasiliteite te ontwikkel, naamlik Mura 1, Mura 2, Mura 3 en Mura 4, en 'n geaardgaande netwerkverbinding, gesamentlik bekend as die Mura Fotovoltaïese sonkrag-ontwikkeling tussen Loxton en Beaufort-Wes in die Beaufort-Wes Plaaslike Munisipaliteit, Ubuntu Plaaslike Munisipaliteit, Sentrale Karoo Distriksmunisipaliteit en die Pixley ka Seme Distriksmunisipaliteit in die Wes-Kaap en Noord-Kaap Provinsies. Die voorgestelde Mura PV-ontwikkeling is naby die goedgekeurde Nuweveld Windplaas-ontwikkeling geleë. Die voorgestelde magtigings sluit die volgende Basiese Evaluering (BE) en Bestekopname en Omgewingsimpakverslagdoening (B&OIV) prosesse in:

Aansoeker	Projek	Tegnologie	Proses	Plaasname
Mura 1 (Pty) Ltd	Tot 150 MW sonkragfasiliteit insluitend geassosieerde infrastruktuur	Fotovoltaïese sonkrag	BE*	<ul style="list-style-type: none"> <li>Leeuwkloof Plaas 43</li> <li>Porsie 4 van Duiker Kranse Plaas 45</li> </ul>
	Tot 132 kV Mura Elektriese Kragnetwerkverbindingkorridor Corridor	Transmissielyn	BE*	<ul style="list-style-type: none"> <li>Leeuwkloof Plaas 43</li> <li>Bultfontein Plaas 13</li> <li>Porsie 4 van Duiker Kranse Plaas 45</li> <li>RE of Porsie 3 van Duiker Kranse Plaas 45</li> <li>Bultfontein Plaas 12</li> <li>Aangrensend Abramskraal Plaas 11</li> <li>RE of Abrams Kraal Plaas 206</li> <li>Sneeuwkraal Plaas 46</li> <li>RE of Duiker Kranse Plaas 45</li> <li>Porsie 2 of Paardeberg Plaas 49</li> </ul>
Mura 2 (Pty) Ltd	Tot 400 MW sonkragfasiliteit insluitend geassosieerde infrastruktuur	Fotovoltaïese sonkrag	B&OIV	<ul style="list-style-type: none"> <li>Leeuwkloof Plaas 43</li> <li>Porsie 4 van Duiker Kranse Plaas 45</li> <li>Bultfontein Plaas 13</li> </ul>
Mura 3 (Pty) Ltd	Tot 320 MW sonkragfasiliteit insluitend geassosieerde infrastruktuur	Fotovoltaïese sonkrag	B&OIV	<ul style="list-style-type: none"> <li>Leeuwkloof Plaas 43</li> <li>RE van Abrams Kraal Plaas 206</li> <li>Portion 4 van Duiker Kranse Plaas 45</li> <li>RE van Porsie 3 van Duiker Kranse Plaas 45</li> <li>RE van Duiker Kranse Plaas 45</li> <li>Sneeuwkraal Plaas 46</li> <li>Aangrensend Abramskraal Plaas 11</li> </ul>
Mura 4 (Pty) Ltd	Tot 360 MW sonkragfasiliteit insluitend geassosieerde infrastruktuur	Fotovoltaïese sonkrag	B&OIV	<ul style="list-style-type: none"> <li>Leeuwkloof Plaas 43</li> <li>Aangrensend Abramskraal Plaas 11</li> <li>Porsie 4 van Duiker Kranse Plaas 45</li> <li>RE van Porsie 3 van Duiker Kranse Plaas 45</li> <li>RE van Duiker Kranse Plaas 45</li> <li>Sneeuwkraal Plaas 46</li> </ul>

\* val binne die Beaufort-Wes Hernubare Energie Ontwikkelingsones

#### OMGEWINGSTOEPASSINGS

Die volgende gelyste aktiwiteite wat met die voorgestelde projekte geassosieer word, is van toepassing:

Projek	Noteringskennisgewings
<ul style="list-style-type: none"> <li>Mura 1</li> <li>Mura 2</li> <li>Mura 3</li> <li>Mura 4</li> </ul>	<ul style="list-style-type: none"> <li>NEMA OIB-regulasies: Noteringskennisgewing 1 (GNR 983, soos gewysig): Aktiwiteit 11(i), 12(ii)(a)(c), 14, 19, 28(ii) and 56(ii);</li> <li>NEMA OIB-regulasies: Noteringskennisgewing 2 (GNR 984, soos gewysig): Aktiwiteit 1 en 15;</li> <li>NEMA OIB-regulasies: Noteringskennisgewing 3 (GNR 985, soos gewysig): Aktiwiteit 4 (ii)(aa), 12 (i)(ii), 14 (ii)(a)(c) (i)(ii)(ff), 18 (i)(ii)(aa) and 23 (ii)(a) (i)(i)(ff).</li> </ul>
<ul style="list-style-type: none"> <li>Mura EGI</li> </ul>	<ul style="list-style-type: none"> <li>NEMA OIB-regulasies: Noteringskennisgewing 1 (GNR 983, soos gewysig): Aktiwiteit 11(i), 12(ii)(a)(c), 14, 19, 27(i) and 28(ii);</li> <li>NEMA OIB-regulasies: Noteringskennisgewing 3 (GNR 985, soos gewysig): Aktiwiteit 12 (i)(ii) and 14 (ii)(a)(c) (i)(ii)(ff).</li> </ul>

#### KONSEP BASIESE ASSESSERING EN KONSEP OMFANGVERSLAG OORSIGTYDPERK

'n Geïntegreerde Openbare Deelnameproses word voorgestel vir die bogenoemde projekte. Die Konsep Basiese Omgewingsevaluering en Omvangverslae sal op versoek en/of by die lokale hieronder beskikbaar gestel word vir hersiening en kommentaar vir 30 dae vanaf **06 Maart 2023 tot 06 April 2023**.

Gebied	Lokaal	Straatadres	kontaknommer
Beaufort-Wes	Beaufort-Wes Openbare Biblioteek	Hoek van Birdstraat en Kerkstraat	023 414 8113
	Klein Karoo Agri	Donkinstraat 80	023 415 1199
Loxton	Loxton-biblioteek	Margaretha Prinsloostraat, Loxton	053 381 3102
WSP webwerf	<a href="https://www.wsp.com/en-ZA/services/public-documents">https://www.wsp.com/en-ZA/services/public-documents</a>		
Datavrye webwerf	<a href="https://wsp-engage.com/">https://wsp-engage.com/</a>		

#### REGISTRASIE

WSP Group Africa (Edms) Bpk (WSP) is deur Red Cap Energy (Edms) Bpk as die onafhanklike Omgewingsevalueringpraktisyn (EAP) aangestel om die onderskeie BA- en S&OIV-prosesse te bestuur. Partye wat formeel as belanghebbendes wil registreer om hul kommentaar oor die voorgestelde projekte te lewer, word versoek om hul volledige kontakbesonderhede aan die EAP te stuur na die besonderhede hieronder verskaf. Alle toekomstige korrespondensie sal aan Geregistreerde belanghebbendes aangestuur word en individueel in kennis gestel word van bykomende geleenthede om aan die proses deel te neem.

EAP-besonderhede: Megan Govender (T) 011 361 1410 (E) [Megan.Govender@wsp.com](mailto:Megan.Govender@wsp.com) (A) Posbus 98867, Sloane Park, 2152



WSP sal sekere persoonlike inligting oor jou as 'n B&GP werker vir doeleindes om jou registrasie as 'n B&GP moontlik te maak en vir die doeleindes om jou besonderhede op ons databasis te stoor, indien jy daartoe instem dat ons dit doen. WSP gebruik hierdie besonderhede om jou te kontak oor ander projekte in die toekoms. WSP sal altyd jou persoonlike inligting verwerk in ooreenstemming met die Wet op die Beskerming van Persoonlike Inligting 4 van 2013. Jy is geregtig om jou regte as 'n databasisgebruiker uit te oefen en ons te laat weet as jy as 'n B&GP gederegistreer wil word of as jy nie meer wil hê nie jou kontakbesonderhede om op ons databasis ingesluit te word.

# Appendix B.2

## **SITE NOTICES**



## ENVIRONMENTAL AUTHORISATION PROCESSES

### NOTICE OF THE PROPOSED DEVELOPMENT OF THE MURA PHOTOVOLTAIC DEVELOPMENT BETWEEN LOXTON AND BEAUFORT WEST IN THE WESTERN CAPE AND NORTHERN CAPE PROVINCES

Notice is given in terms of Regulation 41(2) of GNR 982, as amended published under section 24 and 24D of the National Environmental Management Act (No. 107 of 1998) (NEMA) as amended for submission of applications for Environmental Authorisations (EA) in respect of the Environmental Impact Assessment Regulations activities identified in terms of GNR 983 (as amended), GNR 984 (as amended) and GNR 985 (as amended)

#### DESCRIPTION AND LOCATION

Red Cap Energy is proposing to develop four solar facilities, namely Mura 1, Mura 2, Mura 3, and Mura 4, and an associated grid connection, collectively known as the Mura PV Development between Loxton and Beaufort West in the Beaufort West Local Municipality and Ubuntu Local Municipality and the Central Karoo District Municipality and Pixley ka Seme District Municipality in the Western Cape and Northern Cape Provinces. The proposed Mura PV Development is located in close proximity to the approved Nuweveld Wind Farm Development. The proposed authorisations include the following Basic Assessment (BA) and Scoping and Environmental Impact Reporting (S&EIR) processes:

Proponent	Project	Technology	Process	Listing Notices	Farm Names
Mura 1 (Pty) Ltd	Up to 150 MW Solar Energy Facility (SEF) including associated infrastructure	Solar Photovoltaic (PV)	BA*	<ul style="list-style-type: none"> <li>NEMA EIA Regulations: Listing Notice 1 (GNR 983, as amended): Activity 11(i), 12(ii)(a)(c), 14, 19, 28(ii) and 56(ii);</li> <li>NEMA EIA Regulations: Listing Notice 2 (GNR 984, as amended): Activity 1 and 15;</li> <li>NEMA EIA Regulations: Listing Notice 3 (GNR 985, as amended): Activity 4 (ii)(aa), 12 (i)(ii), 14 (ii)(a)(c) (i)(ii)(ff), 18 (i)(ii)(aa) and 23 (ii)(a) (i)(i)(ff).</li> </ul>	<ul style="list-style-type: none"> <li>Leeuwkloof Farm 43</li> <li>Portion 4 of Duiker Kranse Farm 45</li> </ul>
	Up to 132 kV Mura Electrical Grid Infrastructure (EGI) Corridor	Transmission Line	BA*	<ul style="list-style-type: none"> <li>NEMA EIA Regulations: Listing Notice 1 (GNR 983, as amended): Activity 11(i), 12(ii)(a)(c), 14, 19, 27(i) and 28(ii);</li> <li>NEMA EIA Regulations: Listing Notice 3 (GNR 985, as amended): Activity 12 (i)(i) and 14 (ii)(a)(c) (i)(ii)(ff).</li> </ul>	<ul style="list-style-type: none"> <li>Leeuwkloof Farm 43</li> <li>Bultfontein Farm 13</li> <li>Portion 4 of Duiker Kranse Farm 45</li> <li>RE of Portion 3 of Duiker Kranse Farm 45</li> <li>Bultfontein Farm 12</li> <li>Aangrensend Abramskraal Farm 11</li> <li>RE of Abrams Kraal Farm 206</li> <li>Sneeuwkraal Farm 46</li> <li>RE of Duiker Kranse Farm 45</li> <li>Portion 2 of Paardeberg Farm 49</li> </ul>
Mura 2 (Pty) Ltd	Up to 400 MW SEF including associated infrastructure	Solar PV	S&EIR	<ul style="list-style-type: none"> <li>NEMA EIA Regulations: Listing Notice 1 (GNR 983, as amended): Activity 11(i), 12(ii)(a)(c), 14, 19, 28(ii) and 56(ii);</li> <li>NEMA EIA Regulations: Listing Notice 2 (GNR 984, as amended): Activity 1 and 15;</li> <li>NEMA EIA Regulations: Listing Notice 3 (GNR 985, as amended): Activity 4 (ii)(aa), 12 (i)(ii), 14 (ii)(a)(c) (i)(ii)(ff), 18 (i)(ii)(aa) and 23 (ii)(a) (i)(i)(ff).</li> </ul>	<ul style="list-style-type: none"> <li>Leeuwkloof Farm 43</li> <li>Portion 4 of Duiker Kranse Farm 45</li> <li>Bultfontein Farm 13</li> </ul>
Mura 3 (Pty) Ltd	Up to 320 MW SEF including associated infrastructure	Solar PV	S&EIR	<ul style="list-style-type: none"> <li>NEMA EIA Regulations: Listing Notice 1 (GNR 983, as amended): Activity 11(i), 12(ii)(a)(c), 14, 19, 28(ii) and 56(ii);</li> <li>NEMA EIA Regulations: Listing Notice 2 (GNR 984, as amended): Activity 1 and 15;</li> <li>NEMA EIA Regulations: Listing Notice 3 (GNR 985, as amended): Activity 4 (ii)(aa), 12 (i)(ii), 14 (ii)(a)(c) (i)(ii)(ff), 18 (i)(ii)(aa) and 23 (ii)(a) (i)(i)(ff).</li> </ul>	<ul style="list-style-type: none"> <li>Leeuwkloof Farm 43</li> <li>RE of Abrams Kraal Farm 206</li> <li>Portion 4 of Duiker Kranse Farm 45</li> <li>RE of Portion 3 of Duiker Kranse Farm 45</li> <li>RE of Duiker Kranse Farm 45</li> <li>Sneeuwkraal Farm 46</li> <li>Aangrensend Abramskraal Farm 11</li> </ul>
Mura 4 (Pty) Ltd	Up to 360 MW SEF including associated infrastructure	Solar PV	S&EIR	<ul style="list-style-type: none"> <li>NEMA EIA Regulations: Listing Notice 1 (GNR 983, as amended): Activity 11(i), 12(ii)(a)(c), 14, 19, 28(ii) and 56(ii);</li> <li>NEMA EIA Regulations: Listing Notice 2 (GNR 984, as amended): Activity 1 and 15;</li> <li>NEMA EIA Regulations: Listing Notice 3 (GNR 985, as amended): Activity 4 (ii)(aa), 12 (i)(ii), 14 (ii)(a)(c) (i)(ii)(ff), 18 (i)(ii)(aa) and 23 (ii)(a) (i)(i)(ff).</li> </ul>	<ul style="list-style-type: none"> <li>Leeuwkloof Farm 43</li> <li>Aangrensend Abramskraal Farm 11</li> <li>Portion 4 of Duiker Kranse Farm 45</li> <li>RE of Portion 3 of Duiker Kranse Farm 45</li> <li>RE of Duiker Kranse Farm 45</li> <li>Sneeuwkraal Farm 46</li> </ul>

\* falls within the Beaufort West Renewable Energy Development Zones (REDZ)

#### DRAFT BASIC ASSESSMENT AND DRAFT SCOPING REPORT REVIEW PERIOD

An integrated Public Participation Process is proposed for the above-mentioned projects. The Draft Environmental Basic Assessment and Scoping Reports will be made available from WSP on request and/or at the venues below for review and comment for 30 days from **XX February 2023 to XX March 2023**.

Area	Venue	Street Address	Contact No
Beaufort West	Beaufort West Public Library	Corner of Bird Street and Church Street	023 414 8113
	Klein Karoo Agri	80 Donkin Street	023 415 1199
Loxton	Loxton Library	Margaretha Prinsloo Street, Loxton	053 381 3102
WSP Website	<a href="https://www.wsp.com/en-ZA/services/public-documents">https://www.wsp.com/en-ZA/services/public-documents</a>		
Datafree Website	<a href="https://wsp-engage.com/">https://wsp-engage.com/</a>		

#### REGISTRATION

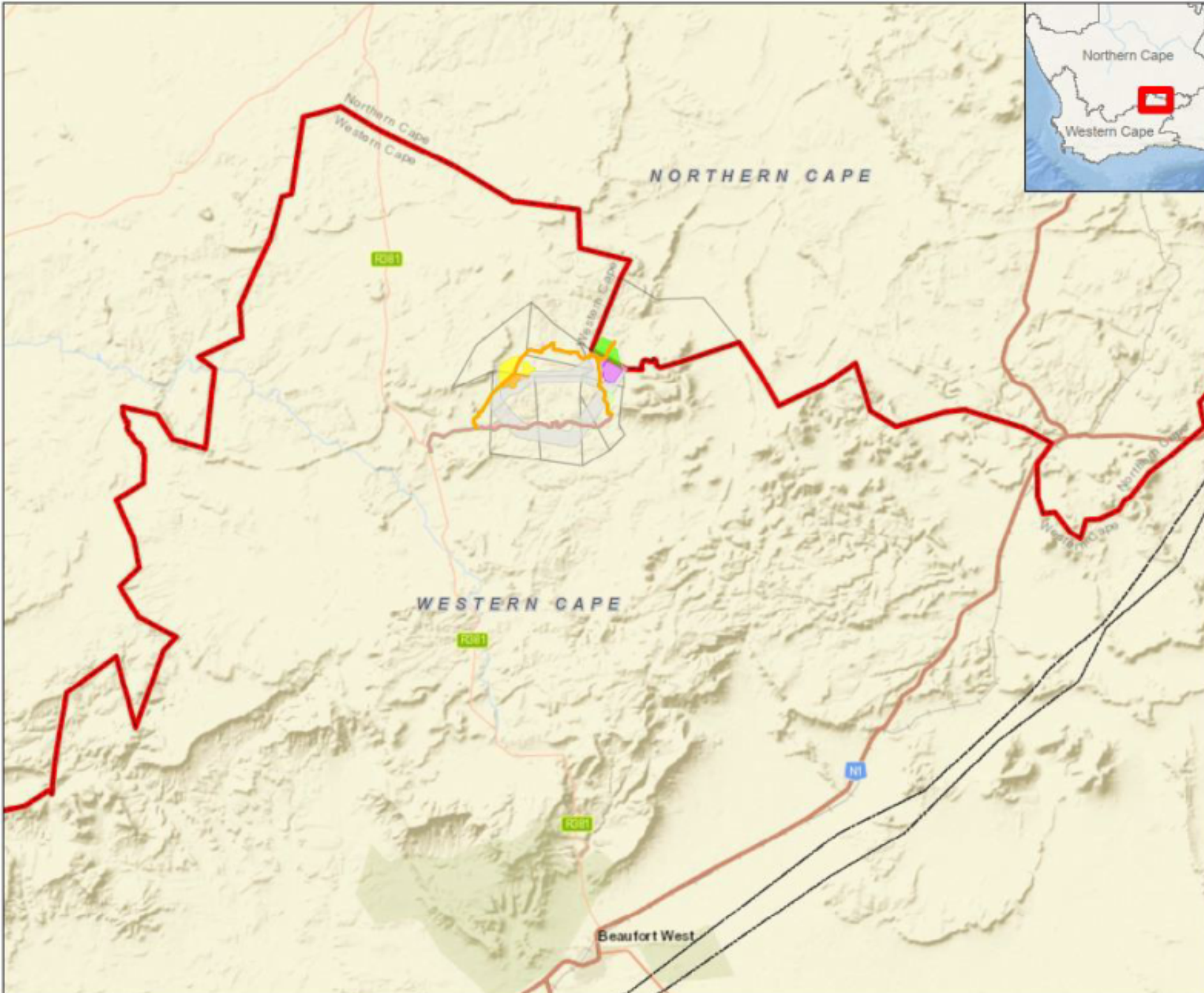
WSP Group Africa (Pty) Ltd (WSP) has been appointed as the independent Environmental Assessment Practitioner (EAP) by Red Cap Energy (Pty) Ltd, to manage the respective BA and S&EIR processes. Parties wishing to formally register as stakeholders in order to offer their comment on the Proposed Projects are requested to forward their full contact details to the EAP at the details provided below. Registered stakeholders will be forwarded all future correspondence and notified individually of additional opportunities to participate in the process.

EAP Details: Megan Govender (T) 011 361 1410 (E) [Megan.Govender@wsp.com](mailto:Megan.Govender@wsp.com) (A) PO Box 98867, Sloane Park, 2152

WSP will be processing certain personal information about you as an I&AP for purposes of enabling your registration as an I&AP and for purposes of storing your details on our database, if you consent for us to do so. WSP uses these details to contact you about other projects in the future. WSP will always process your personal information in accordance with the Protection of Personal Information Act 4 of 2013. You are entitled to exercise your rights as a data subject and let us know if you wish to be deregistered as an I&AP or if you no longer want your contact details to be included on our database.







# REDCAP MURA

LOCALITY

## Legend

- District Road
- Existing Roads
- Access Roads
- Mura EGI Corridor
- Mura Solar 1
- Mura Solar 2
- Mura Solar 3
- Mura Solar 4
- Provincial Boundary
- Eskom Powerlines
- Farm Boundaries



0 2 400 4 800 7 200 9 600 12 000

Metres

### DISCLAIMER

The information on this figure was derived from various digital databases available to WSP Environmental (Pty) Ltd. All information is provided "as is" and it must be understood that data, information, and maps are dynamic and to a constant degree of uncertainty, variation and update. WSP Environmental (Pty) Ltd cannot accept any responsibility for errors, omissions, or outdated accuracy unless otherwise stated. WSP Environmental (Pty) Ltd is not responsible for the production of the map referenced. There are no warranties, expressed or implied, as to the use of this information, including the accuracy or completeness of data for a particular project. Notification of any errors will be appreciated.



**WSP ENVIRONMENTAL (PTY) LTD**  
 WSP HOUSE, 1 DE LAURIE ROAD, LEOPOLDSDALE, WESTVILLE, JOHANNESBURG, SOUTH AFRICA  
 P.O. BOX 1363, WESTVILLE, 2013, SOUTH AFRICA  
 Tel: +27 (0)21 261 9800 Fax: +27 (0)21 261 9801 www.wspenvironmental.com

**DATA SOURCE:**  
 Service Layer Credits: Sources: Esri, HERE, Garmin, USGS, Imagery, INCREMENT P, NRCan, Esri Japan, METI, Esri China (Hong Kong), Swisstopo, Esri (Thailand), Swisstopo, Esri

**COORDINATE SYSTEM:** WARTERBEESTHOORN LOZS

**PROJECT TITLE:**  
 REDCAP MURVELS PV CLUSTER

**SCALE:** 1:500 000 **DRAWN BY:** TS

**DATE:** 2023/01/02 **REVIEWED BY:** MS

<b>FIGURE NO:</b>	<b>PROJECT NO:</b> 4115/2022	<b>REV:</b>
-------------------	------------------------------	-------------

**© COPYRIGHT RESERVED**  
 The content of this document is unclassified and confidential and may not be disclosed or reproduced without the express authorization of the author, being WSP Environmental (Pty) Ltd.

# OMGEWINGSMAGTIGINGSPROSESSE

## KENNISGEWING VAN DIE VOORGESTELDE ONTWIKKELING VAN DIE MURA FOTOVOLTAÏESE ONTWIKKELING TUSSEN LOXTON EN BEAUFORT-WES IN DIE WES-KAAP EN NOORD-KAAP PROVINSIES

Kennis word gegee ingevolge Regulasie 41(2) van GNR 982, soos gewysig, gepubliseer kragtens artikel 24 en 24D van die Wet op Nasionale Omgewingsbestuur (No. 107 van 1998) (NEMA) soos gewysig vir die indiening van aansoeke om Omgewingsmagtigings (EA) ten opsigte van die Omgewingsimpakbepalingsregulasies aktiwiteite geïdentifiseer ingevolge GNR 983 (soos gewysig), GNR 984 (soos gewysig) en GNR 985 (soos gewysig)

### BESKRYWING EN LIGGING

Red Cap Energy stel voor om vier sonkragfasiliteite te ontwikkel, naamlik Mura 1, Mura 2, Mura 3 en Mura 4, en 'n gepaardgaande netwerkverbinding, gesamentlik bekend as die Mura Fotovoltaïese sonkrag-ontwikkeling tussen Loxton en Beaufort-Wes in die Beaufort-Wes Plaaslike Munisipaliteit, Ubuntu Plaaslike Munisipaliteit, Sentrale Karoo Distriksmunisipaliteit en die Pixley ka Seme Distriksmunisipaliteit in die Wes-Kaap en Noord-Kaap Provinsies. Die voorgestelde Mura PV-ontwikkeling is naby die goedgekeurde Nuweveld Windplaas-ontwikkeling geleë. Die voorgestelde magtigings sluit die volgende Basiese Evaluering (BE) en Bestekopname en Omgewingsimpakverslagdoening (B&OIV) prosesse in:

Voorstander	Projek	Tegnologie	Proses	Noteringskennisgewings	Plaasname
Mura 1 (Pty) Ltd	Tot 150 MW sonkragfasiliteit insluitend geassosieerde infrastruktuur	Fotovoltaïese sonkrag	BE*	<ul style="list-style-type: none"> <li>NEMA OIB-regulasies: Noteringskennisgewing 1 (GNR 983, soos gewysig): Aktiwiteit 11(i), 12(ii)(a)(c), 14, 19, 28(ii) and 56(ii);</li> <li>NEMA OIB-regulasies: Noteringskennisgewing 2 (GNR 984, soos gewysig): Aktiwiteit 1 en 15;</li> <li>NEMA OIB-regulasies: Noteringskennisgewing 3 (GNR 985, soos gewysig): Aktiwiteit 4 (ii)(aa), 12 (i)(ii), 14 (ii)(a)(c) (i)(ii)(ff), 18 (i)(ii)(aa) and 23 (ii)(a) (i)(ii)(ff).</li> </ul>	<ul style="list-style-type: none"> <li>Leeuwkloof Plaas 43</li> <li>Porsie 4 van Duiker Kranse Plaas 45</li> </ul>
	Tot 132 kV Mura Elektriese Kragnetwerkverbindingkorridor Corridor	Transmissielyn	BE*	<ul style="list-style-type: none"> <li>NEMA OIB-regulasies: Noteringskennisgewing 1 (GNR 983, soos gewysig): Aktiwiteit 11(i), 12(ii)(a)(c), 14, 19, 27(i) and 28(ii);</li> <li>NEMA OIB-regulasies: Noteringskennisgewing 3 (GNR 985, soos gewysig): Activity 12 (i)(ii) and 14 (ii)(a)(c) (i)(ii)(ff).</li> </ul>	<ul style="list-style-type: none"> <li>Leeuwkloof Plaas 43</li> <li>Bultfontein Plaas 13</li> <li>Porsie 4 van Duiker Kranse Plaas 45</li> <li>RE of Porsie 3 van Duiker Kranse Plaas 45</li> <li>Bultfontein Plaas 12</li> <li>Aangrensend Abramskraal Plaas 11</li> <li>RE of Abrams Kraal Plaas 206</li> <li>Sneeuwkraal Plaas 46</li> <li>RE of Duiker Kranse Plaas 45</li> <li>Porsie 2 of Paardeberg Plaas 49</li> </ul>
Mura 2 (Pty) Ltd	Tot 400 MW sonkragfasiliteit insluitend geassosieerde infrastruktuur	Fotovoltaïese sonkrag	B&OIV	<ul style="list-style-type: none"> <li>NEMA OIB-regulasies: Noteringskennisgewing 1 (GNR 983, soos gewysig): Aktiwiteit 11(i), 12(ii)(a)(c), 14, 19, 28(ii) and 56(ii);</li> <li>NEMA OIB-regulasies: Noteringskennisgewing 2 (GNR 984, soos gewysig): Aktiwiteit 1 en 15;</li> <li>NEMA OIB-regulasies: Noteringskennisgewing 3 (GNR 985, soos gewysig): Aktiwiteit 4 (ii)(aa), 12 (i)(ii), 14 (ii)(a)(c) (i)(ii)(ff), 18 (i)(ii)(aa) and 23 (ii)(a) (i)(ii)(ff).</li> </ul>	<ul style="list-style-type: none"> <li>Leeuwkloof Plaas 43</li> <li>Porsie 4 van Duiker Kranse Plaas 45</li> <li>Bultfontein Plaas 13</li> </ul>
Mura 3 (Pty) Ltd	Tot 320 MW sonkragfasiliteit insluitend geassosieerde infrastruktuur	Fotovoltaïese sonkrag	B&OIV	<ul style="list-style-type: none"> <li>NEMA OIB-regulasies: Noteringskennisgewing 1 (GNR 983, soos gewysig): Aktiwiteit 11(i), 12(ii)(a)(c), 14, 19, 28(ii) and 56(ii);</li> <li>NEMA OIB-regulasies: Noteringskennisgewing 2 (GNR 984, soos gewysig): Aktiwiteit 1 en 15;</li> <li>NEMA OIB-regulasies: Noteringskennisgewing 3 (GNR 985, soos gewysig): Aktiwiteit 4 (ii)(aa), 12 (i)(ii), 14 (ii)(a)(c) (i)(ii)(ff), 18 (i)(ii)(aa) and 23 (ii)(a) (i)(ii)(ff).</li> </ul>	<ul style="list-style-type: none"> <li>Leeuwkloof Plaas 43</li> <li>RE van Abrams Kraal Plaas 206</li> <li>Portion 4 van Duiker Kranse Plaas 45</li> <li>RE van Porsie 3 van Duiker Kranse Plaas 45</li> <li>RE van Duiker Kranse Plaas 45</li> <li>Sneeuwkraal Plaas 46</li> <li>Aangrensend Abramskraal Plaas 11</li> </ul>
Mura 4 (Pty) Ltd	Tot 360 MW sonkragfasiliteit insluitend geassosieerde infrastruktuur	Fotovoltaïese sonkrag	B&OIV	<ul style="list-style-type: none"> <li>NEMA OIB-regulasies: Noteringskennisgewing 1 (GNR 983, soos gewysig): Aktiwiteit 11(i), 12(ii)(a)(c), 14, 19, 28(ii) and 56(ii);</li> <li>NEMA OIB-regulasies: Noteringskennisgewing 2 (GNR 984, soos gewysig): Aktiwiteit 1 en 15;</li> <li>NEMA OIB-regulasies: Noteringskennisgewing 3 (GNR 985, soos gewysig): Aktiwiteit 4 (ii)(aa), 12 (i)(ii), 14 (ii)(a)(c) (i)(ii)(ff), 18 (i)(ii)(aa) and 23 (ii)(a) (i)(ii)(ff).</li> </ul>	<ul style="list-style-type: none"> <li>Leeuwkloof Plaas 43</li> <li>Aangrensend Abramskraal Plaas 11</li> <li>Porsie 4 van Duiker Kranse Plaas 45</li> <li>RE van Porsie 3 van Duiker Kranse Plaas 45</li> <li>RE van Duiker Kranse Plaas 45</li> <li>Sneeuwkraal Plaas 46</li> </ul>

\* val binne die Beaufort-Wes Herbare Energie Ontwikkelingsone

### KONSEP BASIESE ASSESSERING EN KONSEP OMFANGVERSLAG OORSIGTYDPERK

'n Geïntegreerde Openbare Deelnameproses word voorgestel vir die bogenoemde projekte. Die Konsep Basiese Omgewingsevaluering en Omvangverslag sal op versoek en/of by die lokale hieronder beskikbaar gestel word vir hersiening en kommentaar vir 30 dae vanaf XX Februarie 2023 tot XX Maart 2023.

Gebied	Lokaal	Straatadres	kontaknommer
Beaufort-Wes	Beaufort-Wes Openbare Biblioteek	Hoek van Birdstraat en Kerkstraat	023 414 8113
	Klein Karoo Agri	Donkinstaat 80	023 415 1199
Loxton	Loxton-biblioteek	Margaretha Prinsloostraat, Loxton	053 381 3102
WSP webwerf	<a href="https://www.wsp.com/en-ZA/services/public-documents">https://www.wsp.com/en-ZA/services/public-documents</a>		
Datavrye webwerf	<a href="https://wsp-engage.com/">https://wsp-engage.com/</a>		

### REGISTRASIE

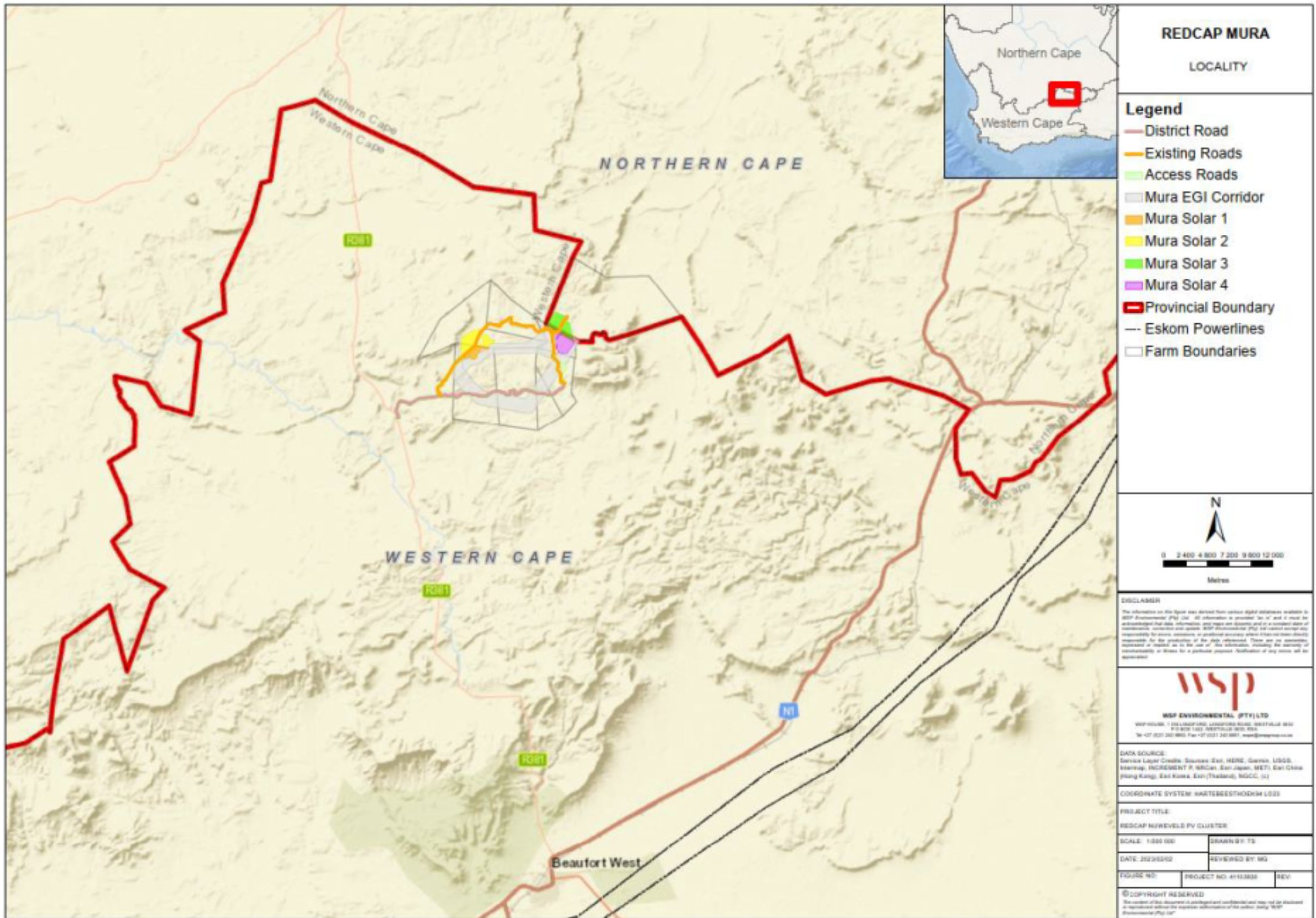
WSP Group Africa (Edms) Bpk (WSP) is deur Red Cap Energy (Edms) Bpk as die onafhanklike Omgewingsevalueringsspraktisyn (EAP) aangestel om die onderskeie BA- en S&OIV-prosesse te bestuur. Partye wat formeel as belanghebbendes wil registreer om hul kommentaar oor die voorgestelde projekte te lewer, word versoek om hul volledige kontakbesonderhede aan die EAP te stuur na die besonderhede hieronder verskaf. Alle toekomstige korrespondensie sal aan Geregistreerde belanghebbendes aangestuur word en individueel in kennis gestel word van bykomende geleenthede om aan die proses deel te neem.

EAP-besonderhede: Megan Govender (T) 011 361 1410 (E) [Megan.Govender@wsp.com](mailto:Megan.Govender@wsp.com) (A) Posbus Box 98867, Sloane Park, 2152

WSP sal sekere persoonlike inligting oor jou as 'n B&GP verwerk vir doeleindes om jou registrasie as 'n B&GP moontlik te maak en vir die doeleindes om jou besonderhede op ons databasis te stoor, indien jy daartoe instem dat ons dit doen. WSP gebruik hierdie besonderhede om jou te kontak oor ander projekte in die toekoms. WSP sal altyd jou persoonlike inligting verwerk in ooreenstemming met die Wet op die Beskerming van Persoonlike Inligting 4 van 2013. Jy is geregtig om jou regte as 'n databasiegebruiker uit te oefen en ons te laat weet as jy as 'n B&GP gederegistreer wil word of as jy nie meer wil hê nie jou kontakbesonderhede om op ons databasis ingestel te word.



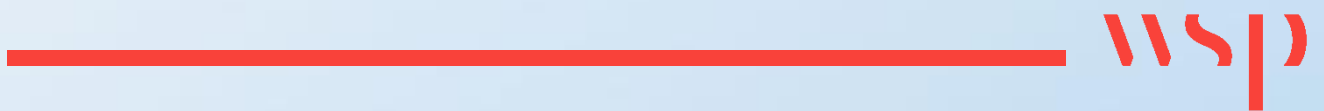




Fiuur 1: Mura Fotovoltaïese sonkrag-ontwikkeling

# Appendix C

## MEETINGS



# Appendix C.1

**DFFE PRE-APPLICATION MEETING**





## MEETING NOTES

<b>JOB TITLE</b>	Mura Solar Photovoltaic Development
<b>PROJECT NUMBER</b>	41103930
<b>DFFE PRE-APPLICATION REFERENCE NUMBER</b>	2022-09-0002
<b>DATE</b>	22 September 2022
<b>TIME</b>	10h00
<b>VENUE</b>	MS Teams
<b>SUBJECT</b>	DFFE Pre-Application Meeting for Mura Solar Photovoltaic Development
<b>CLIENT</b>	Red Cap Energy (Pty) Ltd
<b>PRESENT</b>	Ashlea Strong (AS) - WSP Megan Govender (MG) - WSP Surina Laurie (SL) - Red Cap Jessica Trytsman (JT) – Red Cap Lerato Mokoena (LM) – DFFE Jay-Jay Mpelane (JM) – DFFE Nyiko Nkosi (NN) - DFFE

### MATTERS ARISING

### ACTION

<b>NOTE:</b> These notes constitute a summary of the key discussion points and decisions made during the meeting. They are not intended to reflect the exact discussions held.	<i>Post-meeting notes are formatted in red italic text</i>
<b>1.0 INTRODUCTIONS</b> MG welcomed all attendees and presented the Agenda for the meeting. The attendees introduced themselves.	
<b>2.0 PROJECT PRESENTATION</b> Following the introductions, MG proceeded with the presentation ( <b>Appendix A</b> ) of the proposed Mura Solar Photovoltaic (PV) Complex located between Loxton and Beaufort West. MG presented the project which covered the following:	

Building C, Knightsbridge  
33 Sloane Street  
Bryanston, 2191  
South Africa

T: +27 11 361 1300  
F: +27 11 361 1301

[www.wsp.com](http://www.wsp.com) \\corp.pbwan.net\za\Central\_Data\Projects\41100xxx\41103930 - RedCap Nuweveld PV Cluster\41 ES\01-Reports\02-Pre-App\03\_Pre-Application Meeting Minutes\41103930\_20220928\_Redcap Mura Solar\_Pre-App Meeting Minutes.docx

## MEETING NOTES

- Overview of project;
- Project background;
- Typical infrastructure;
- Key considerations;
- Environmental Authorisation Process;
- Listed Activities;
- DFFE Screening Tool Results;
- Specialist Studies;
- Public Participation Plan;
- Project Timeframes; and
- Clarification Questions and Discussions.

The following key issues were raised during the presentation:

- JM enquired the purpose of the meeting. MG clarified that the meeting is a pre-application meeting for the Mura Solar PV Complex and there is specific clarification required for the environmental authorisation process as there are aspects of the project that do not follow the norm.
- There are four solar PV facilities and two grid connections proposed which will collectively be known as the Mura Solar PV Complex. All projects are located in the same area next to each other.
- Most of the project areas fall within the Western Cape, however Mura 3 Solar Area falls within the Northern Cape.
- The typical infrastructure associated with the project includes:
  - Solar Field
  - Solar Farm Substations
  - Building Infrastructure (O&M buildings, workshops, etc.)
  - Battery Energy Storage Systems
  - Underground cables
  - Gravel roads
  - Fencing
- The Project Area traverses a Critical Biodiversity Areas (CBA 1). Mura 1 Solar PV Facility falls within the Beaufort West Renewable Energy Development Zones (REDZ). Mura 2 falls partially within the Beaufort West REDZ. The entire project falls within the Eastern Corridor Strategic Transmission Corridor.
- Specialists have been to site to undertake a sensitivity verification. The results have been combined into an environmental sensitivity map that highlights all the potential environmentally sensitive areas within the project area as identified by the specialists. The project layout has been designed to avoid the environmentally sensitive areas.
- Mura 2, 3 and 4 will follow a Scoping and EIA (S&EIA) Process, whereas Mura 1 will follow a Basic Assessment Process as the project falls within the Beaufort West REDZ.
- Corridor A will follow a Basic Assessment Process and Corridor B may qualify for Registration in terms of GN 2313.
- The S&EIA and BA Processes will run concurrently.
- There will be one consolidated public participation process for all projects.
- The Department of Forestry, Fisheries and Environment (DFFE) was confirmed as being the competent authority for this project.

*Post meeting it was decided that Corridor A and B will be assessed as one project and will follow a single BA Process*

### 3.0 CLARIFICATION QUESTIONS

MG noted that the proposed approach for the specialist studies is to have one combined specialist report that will have each area assessed by the specialist in a separate section in the report. MG enquired if this approach would be accepted by the department (DFFE). JM confirmed that the supporting specialist studies for the various applications can be a combined report but the recommendations and mitigation measures must be separate for each project.

The Mura 2 Solar PV Facility falls partially within the Beaufort West REDZ. AS requested clarity on whether Mura 2 can be considered falling within the Beaufort West REDZ and therefore subject to a Basic Assessment? The DFFE Screening Tool states that the development falls within the REDZ. LM

## MEETING NOTES

clarified that the project has to completely fall within the REDZ to qualify for the BA Process. Mura 2 therefore does not qualify.

Mura 2, 3 and 4 will all follow a S&EIA Process. These are three separate applications. MG enquired if the department would be open to having one combined Scoping Report and EIA Report for the three applications? Each area will be assessed separately and impacts, mitigation measures and recommendations for each project will be separated in the report. JM advised that it is preferable to submit separate reports to ensure there is no confusion. The applications may not all be allocated to the same case officer therefore each application will require its own report.

SL enquired whether the department would accept a regulation 11 request for a combined application process? If this was accepted, would all the applications therefore not go to the same case officer? JM reiterated that each application should have an accompanying report.

LM enquired if there will be a regulation 11 application submission? SL confirmed that the approach is to combine the applications as per regulation 11, but clarification on this was to be requested from the department. LM suggested that the regulation 11 combined application request is formally submitted. Thereafter the department will submit an official response.

Corridor B falls within the Eastern Strategic Transmission Corridor and specialists have confirmed that the line routing within the Corridor may be able to avoid very high and high sensitive areas. MG noted that this is interpreted as the project qualifying for Registration of a Transmission Line as per Government Notice No. 2313 published in Government Gazette No. 47095 of 27 July 2022. MG enquired if the department has to confirm the applicability of this or if the EAP commence with the registration process. MG also enquired if the EA for the solar farms has to be granted first or can the registration process commence at the beginning of the EA Process of the other projects? LM clarified that the department does not have to confirm the applicability prior to the registration process. Chapter 2 of the guideline must be followed. Once all the requirements have been received as per Chapter 2, the registration of the transmission line can commence by the EAP. This can take place at any point in the timeline.

### 4.0 CLOSING REMARKS

AS noted that the EAP will liaise with the applicant and proceed with submission of the regulation 11 approval for combined applications. If the department approves the request, the process will follow with a combined application.

MG noted that meeting minutes will be compiled and sent to the attendees for approval.


WSP to submit request for combination of applications as per Regulation 11 of the EIA Regs (*this was submitted on 23 September 2022*).

WSP to compile and submit meeting minutes for approval.




APPENDIX A

PRE-APPLICATION MEETING PRESENTATION



# DFFE Pre-Application Meeting

Mura Solar PhotoVoltaic Development



1




## Agenda

- 1 **Introduction**  
Introductions
- 2 **Overview of Project**  
Project Background  
Typical Infrastructure  
Key Considerations
- 3 **Permitting Processes**  
Environmental Authorisation Process  
Listed Activities  
DFFE Screening Tool  
Specialist Studies
- 4 **Public Participation Plan**
- 5 **Timeframes**
- 6 **Discussion**  
Specific Clarification  
Questions and Comments




2

2




## Introductions

<b>Applicant</b>	<b>Red Cap Energy (Pty) Ltd</b> Surina Laurie Jessica Trytsman
<b>EAP</b>	<b>WSP Group Africa (Pty) Ltd</b> Megan Govender Ashlea Strong
<b>Authority</b>	<b>Department of Forestry, Fisheries and the Environment (DFFE)</b> Jay-Jay Mpelane



3

3



Overview of the Project

## Background

Red Cap Energy (Pty) Ltd is proposing to develop four solar facilities and associated grid connections, collectively known as the Mura Solar PV Complex, between Loxton and Beaufort West. The development will be divided into up to four solar and two grid projects, namely:

- o Mura 1 Solar PV Facility (up to 150 MW)
- o Mura 2 Solar PV Facility (up to 450 MW)
- o Mura 3 Solar PV Facility (up to 320 MW)
- o Mura 4 Solar PV Facility (up to 360 MW); and
- o Two grid infrastructure projects (Mura EGI Corridor for Mura Sites 1 and 2 and Mura EGI Corridor for Mura Sites 3 and 4)

4

4

**wsp**

Overview of the Project

### Background

	Mura 1 Solar PV Facility	Mura 2 Solar PV Facility	Mura 3 Solar PV Facility	Mura 4 Solar PV Facility
Project Extent (full area to be transformed)	160 ha	580 ha	370 ha	420 ha
Generation capacity	150 MW	450 MW	320 MW	360 MW

	Corridor A	Corridor B
Grid Infrastructure Area	Mura EGI Corridor for Mura 3 and 4 Facilities	Mura EGI Corridor for Mura 1 and 2 Facilities

5

5

**wsp**

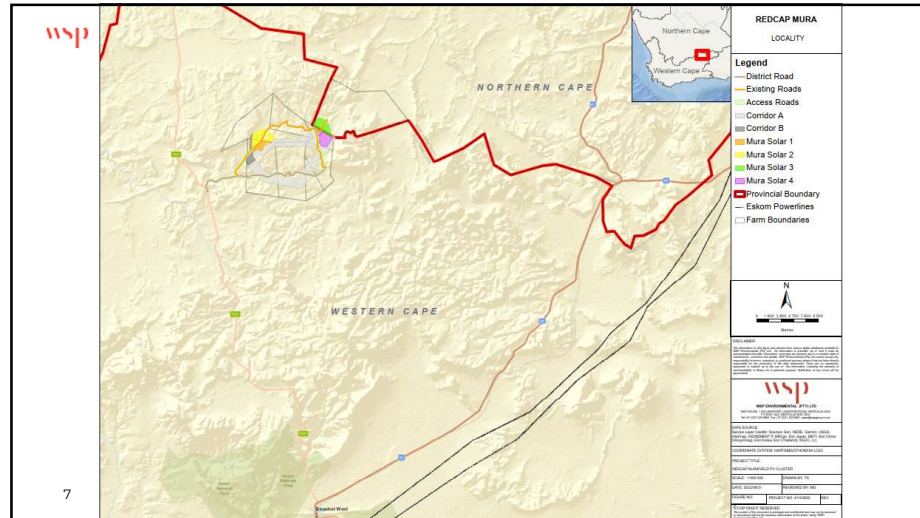
Overview of the Project

### Location

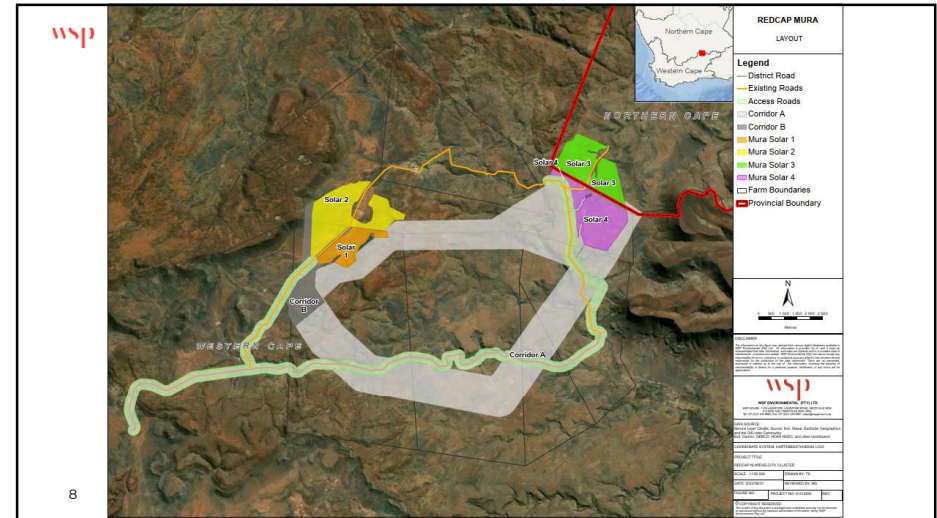
	Mura 1 Solar PV Facility	Mura 2 Solar PV Facility	Mura 3 Solar PV Facility	Mura 4 Solar PV Facility
Province	Western Cape and Northern Cape			
District Municipality	Central Karoo District Municipality and Pixley ka Sema District Municipality			
Local Municipality	Beaufort West Local Municipality and Ubuntu Local Municipality			
Farms	Portion 4 of Duiker Kranse Farm No. 45	Portion 4 and 45 of Duiker Kranse Farm No. 45	RE of Abrams Kraal Farm No. 206	Portion 11 of Bullfontein Farm No. 387

6

6



7



8

wsp

Overview of the Project

### Typical Infrastructure

Each of the solar facilities will contain the following infrastructure:

- Solar Field
  - Maximum height of 6 m
  - PV Modules that are located on either axis tracking structures or fixed tilt mounting structures or similar
- Solar Farm Substations
  - Maximum height of 12m
  - Two up to 150 m x 75 m substation yards that will include:
    - Substation building
    - High voltage gantry
- Building Infrastructure
  - Maximum height of 8m
  - Offices
  - Operational and maintenance (O&M)/ control centre
  - Warehouse/workshop
  - Ablution facilities
  - Converter/inverter stations

9

9

wsp

Overview of the Project

### Typical Infrastructure

- Li-ion or similar solid state Battery Energy Storage System (BESS)
  - Each solar farm will have up to a 3.5 ha area for a 240 MW BESS
  - BESS substation (same specifications as the solar farm substations)
  - Connected to the solar farm sub/switching stations via an underground high voltage cable
- Other infrastructure
  - Internal underground cables of up to 132 kV
  - Internal gravel roads
  - Fencing (between 2 – 3 m high) around the PV Facilities
  - Panel maintenance and cleaning area
  - Storm water management system
  - Construction work area

10

10

wsp

Overview of the Project

### Typical Infrastructure

- Associated Infrastructure – outside the solar area footprint:
  - Internal access gravel roads
    - 6m wide driving surface
    - May be up to 12m wide during construction but will be temporary and rehabilitated following construction phase
    - May require side drains on one or both sides
- Electrical Grid Infrastructure (EGI) Corridor Components
  - Covered in separate applications to the Solar PV facilities
  - Eskom Switching stations:
    - Located adjacent to the solar farm substations within the solar area footprint
    - Maximum height of 12m
    - Footprint of up to 150 m x 75 m
  - Overhead 132 kV lines supported by monopole pylons with a 38m max height
  - Three additional up to 150 m x 75 m switching stations located within the electricity grid corridors

11

11

wsp

Overview of the Project

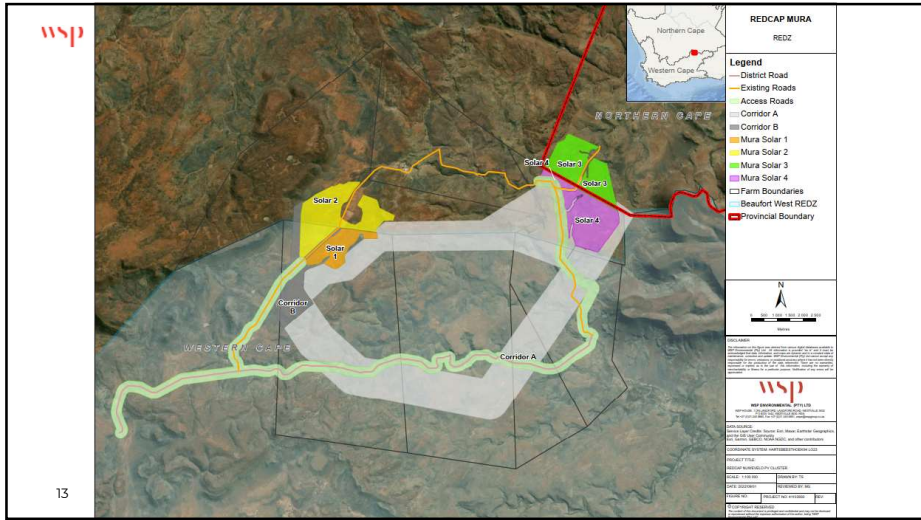
### Key Considerations

- The Project Area traverses **Critical Biodiversity Areas (CBA)** (CBA 1)
- Mura 1 Solar PV Facility falls within the Beaufort West **Renewable Energy Development Zones (REDZ)**
- The entire project falls within the **Strategic Transmission Corridors:** Eastern Corridor

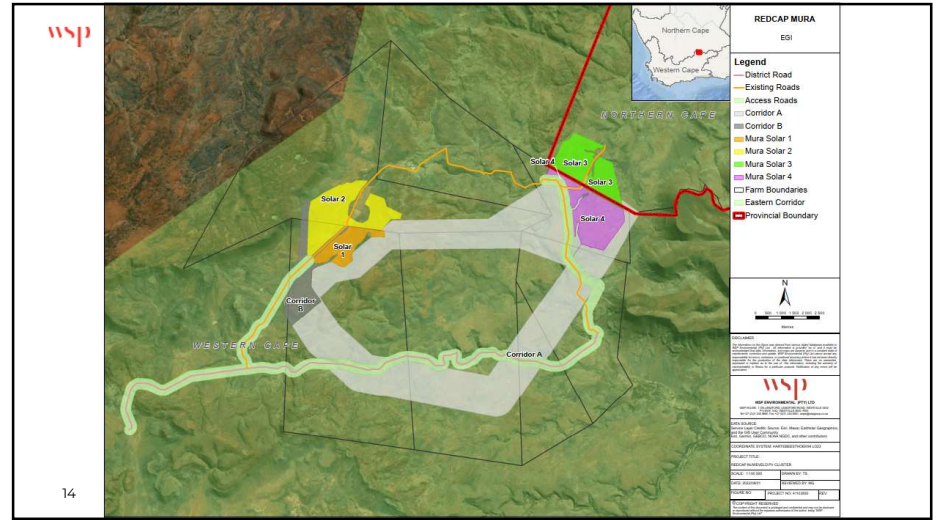
12

12

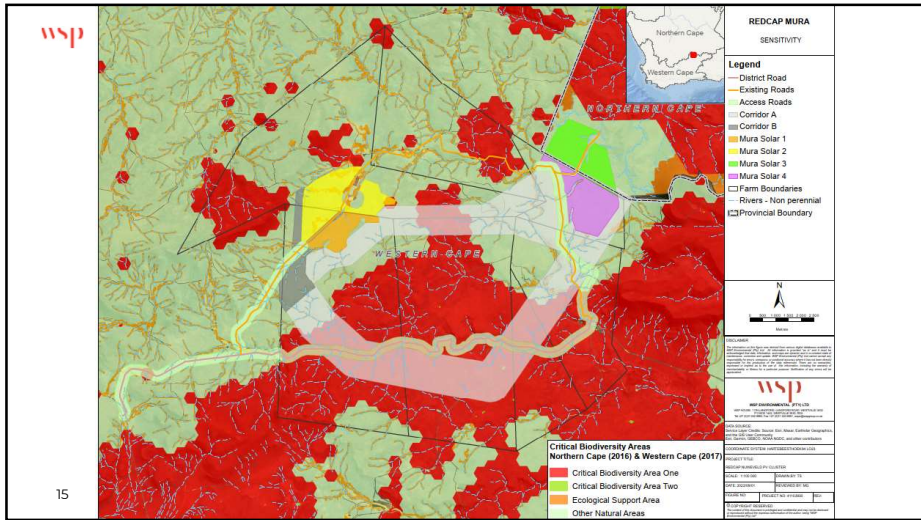




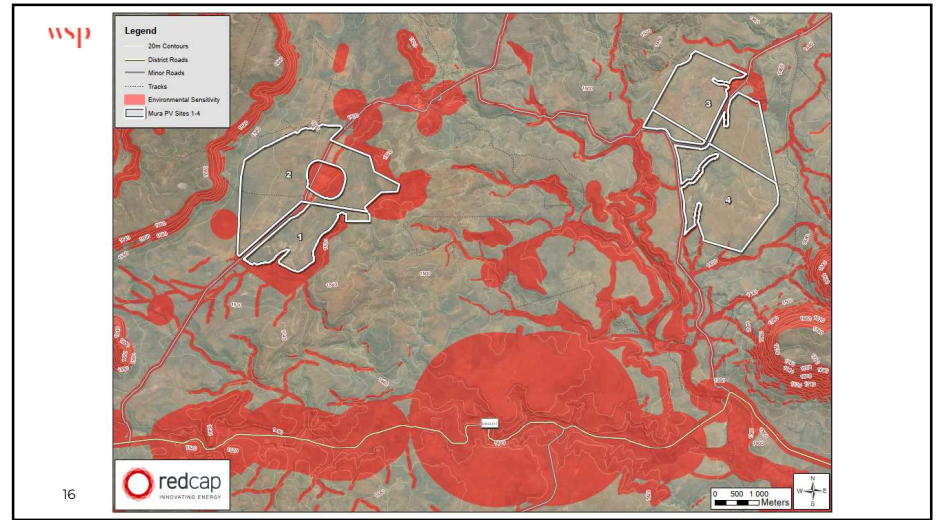
13



14



15



16

**wsp**

Permitting Processes

### Environmental Authorisation Applications

- o **Combined Scoping and Environmental Impact Assessment (S&EIA) Processes:**
  - Mura 2 Solar PV Facility (up to 450 MW)
  - Mura 3 Solar PV Facility (up to 320 MW)
  - Mura 4 Solar PV Facility (up to 360 MW)
- o **Separate Basic Assessment/Assessment Processes:**
  - Basic Assessment for the Mura 1 Solar PV Facility (up to 150 MW)\*\*
  - Basic Assessment for the Corridor A 132kV Grid Connection
  - Basic Assessment/Registration of the transmission line for the Corridor B 132kV Grid Connection\*\*\*

\*\* Falls wholly within Beaufort West REDZ  
 \*\*\* May qualify for Registration in terms of GN 2313

17

17

**wsp**

Permitting Processes

### Listed Activities – Listing Notice 1

Listed Activity	Description of Project Activity
<b>Activity 11:</b> The development of facilities or infrastructure for the transmission and distribution of electricity— (i) outside urban areas or industrial complexes with a capacity of more than 33 but less than 275 kilovolts	All projects will include grid infrastructure of up to 132 kV overhead/underground transmission lines. The transmission lines are outside of the urban edge.
<b>Activity 12:</b> The development of— (i) infrastructure or structures with a physical footprint of 100 square metres or more; where such development occurs— (a) within a watercourse; or (c) if no development setback exists, within 32 metres of a watercourse, measured from the edge of a watercourse	The powerlines will require the erection of pylons, which may require a total construction area of approximately 100m <sup>2</sup> . There is the potential that a pylon or access road will transverse a watercourse (or drainage line).
<b>Activity 19:</b> The infilling or depositing of any material of more than 10 cubic metres into, or the dredging, excavation, removal or moving of soil, sand, shells, shell grit, pebbles or rock of more than 10 cubic metres from a watercourse	Internal access roads and stormwater control infrastructure, as well as electrical cabling required to connect the various components of the Facilities will collectively require the excavation, infilling or removal of soil exceeding 10m <sup>3</sup> from delineated watercourses on site.
<b>Activity 27:</b> The clearance of an area of 1 hectare or more, but less than 20 hectares of indigenous vegetation, except where such clearance of indigenous vegetation is required for: (i) the undertaking of a linear activity; or (ii) maintenance purposes undertaken in accordance with a maintenance management plan	The development envelope of these facilities will be wholly transformed either with solar panels or other supporting infrastructure (including the substation, Battery Facility, cables, etc)

18

18

**wsp**

Permitting Processes

### Listed Activities – Listing Notice 2

Listed Activity	Description of Project Activity
<b>Activity 1:</b> The development of facilities or infrastructure for the generation of electricity from a renewable resource where the electricity output is 20 megawatts or more, excluding where such development of facilities or infrastructure is for photovoltaic installations and occurs: (a) within an urban area; or (b) on existing infrastructure.	Mura 1 Solar PV Facility will generate up to 150 MW, Mura 2 Solar PV Facility will generate up to 450 MW, Mura 3 Solar PV Facility will generate up to 320 MW, and Mura 4 Solar PV Facility will generate up to 360 MW of electricity output from a renewable resource.
<b>Activity 15:</b> The clearance of an area of 20 hectares or more of indigenous vegetation, excluding where such clearance of indigenous vegetation is required for— (i) the undertaking of a linear activity; or (ii) maintenance purposes undertaken in accordance with a maintenance management plan.	Each of the Mura Solar PV projects will utilise a footprint of more than 150 ha. It is likely that at least 20 ha of indigenous vegetation will be removed.

19

19

**wsp**

Permitting Processes

### Listed Activities – Listing Notice 3

Listed Activity	Description of Project Activity
<b>Activity 12:</b> The clearance of an area of 300 square metres or more of indigenous vegetation except where such clearance of indigenous vegetation is required for maintenance purposes undertaken in accordance with a maintenance management plan In i. Western Cape ii. Within critical biodiversity areas identified in bioregional plans;	Each of the Mura Solar PV projects and the supporting grid infrastructure will utilise a footprint of more than 300 m <sup>2</sup> and traverses a Critical Biodiversity Area.
<b>Activity 14:</b> The development of— (i) dams or weirs, where the dam or weir, including infrastructure and water surface area exceeds 10 square metres; or (ii) infrastructure or structures with a Physical footprint of 10 Square metres or more; where such development occurs— (a) within a watercourse; (b) in front of a development setback; or (c) if no development setback has been adopted, within 32 metres of a watercourse, measured from the edge of a watercourse; In i. Western Cape; ii. Outside urban areas: (ff) Critical biodiversity areas or ecosystem service areas as identified in systematic biodiversity plans adopted by the competent authority or in bioregional plans;	The powerlines will require the erection pylons, which may require a construction area of approximately 100m <sup>2</sup> . There is the potential that a pylon or access road will transverse a watercourse (or drainage line) in a Critical Biodiversity Area.

20

20

wsp

Permitting Processes

### DFFE Screening Tool Identified Sensitivities – Solar PV Facilities

THEME	VERY HIGH SENSITIVITY	HIGH SENSITIVITY	MEDIUM SENSITIVITY	LOW SENSITIVITY
Agriculture Theme		S2	S1 S3 S4	
Animal Species Theme		S1 S2	S3 S4	
Aquatic Biodiversity Theme				S1 S2 S3 S4
Archaeological and Cultural Heritage Theme				S1 S2 S3 S4
Avian Theme				S1 S2 S3 S4
Civil Aviation (Solar PV) Theme				S1 S2 S3 S4
Defence Theme				S1 S2 S3 S4
Landscape (Solar) Theme	S1 S2 S3 S4			
Palaeontology Theme	S1 S2 S3 S4			
Plant Species Theme			S2	S1 S3 S4
RFI Theme		S1 S2	S3 S4	
Terrestrial Biodiversity Theme	S2			S1 S3 S4

S1: Mura 1 Solar PV Facility  
 S2: Mura 2 Solar PV Facility  
 S3: Mura 3 Solar PV Facility  
 S4: Mura 4 Solar PV Facility

21

21

wsp

Permitting Processes

### DFFE Screening Tool Identified Sensitivities – Grid Infrastructure

THEME	VERY HIGH SENSITIVITY	HIGH SENSITIVITY	MEDIUM SENSITIVITY	LOW SENSITIVITY
Agriculture Theme		A	B	
Animal Species Theme		A B		
Aquatic Biodiversity Theme	A B			
Archaeological and Cultural Heritage Theme				A B
Civil Aviation Theme				A B
Defence Theme				A B
Paleontology Theme	A B			
Plant Species Theme			A B	
Terrestrial Biodiversity Theme	A B			

A: Corridor A Grid Infrastructure  
 B: Corridor B Grid Infrastructure

22

22

wsp

Permitting Processes

### Specialist Assessments Identified by the DFFE Screening Tool

Specialist Study	Mura 1, 2, 3 and 4 Solar PV Facilities	Corridor A and B Grid Infrastructure
Agricultural Impact Assessment	X	X
Landscape/Visual Impact Assessment	X	X
Archaeological and Cultural Heritage Impact Assessment	X	X
Palaeontology Impact Assessment	X	X
Terrestrial Biodiversity Impact Assessment	X	X
Aquatic Biodiversity Impact Assessment	X	X
Civil Aviation Assessment	X	X
Defense Assessment	X	X
RFI Assessment	X	X
Geotechnical Assessment	X	X
Socio-Economic Assessment	X	
Plant Species Assessment	X	X
Animal Species Assessment	X	X
Avian Impact Assessment		X

23

23

wsp

Permitting Processes

### Specialist Studies Commissioned

Specialist Study	Comment
Soils and Agricultural Potential Assessment	A soils and agricultural assessment will be undertaken
Archaeological and Cultural Heritage Impact Assessment	An archaeological and heritage impact assessment will be undertaken
Palaeontology Impact Assessment	A palaeontological impact assessment will be undertaken
Visual Impact Assessment	A visual impact assessment will therefore be undertaken
Terrestrial Biodiversity Impact Assessment	A terrestrial biodiversity assessment will be undertaken. This assessment will include both fauna and flora aspects
Aquatic Biodiversity Impact Assessment	An aquatic biodiversity assessment will be undertaken
Avifauna Impact Assessment	Due to the potential impacts on birds as a result of the projects, an avifauna assessment will be undertaken
Social Impact Assessment	A socio-economic impact assessment will be undertaken
Traffic Assessment	A traffic assessment will be undertaken
Climate Change	A climate change assessment will be undertaken

24

24

wsp

Permitting Processes

### Specialist Studies NOT Commissioned

Specialist Study	Comment
Geotechnical	A detailed Geotechnical Assessment will not be undertaken as this will be undertaken during the design phase.
RFI	A Radio Frequency Interference (RFI) Study will not be undertaken. The South African Weather Service (SAWS) and relevant telecommunications stakeholders will be engaged with as part of the Public Participation Process. As this theme has been identified as either medium or high, a compliance statement will be prepared by the EAP and included in the EIA Reports for the Mura Solar PV Projects.
Civil Aviation	The Civil Aviation Authority will be included on the project stakeholder database. They will be informed of the proposed Project, and comment will be sought. An Application for the Approval of Obstacles will also be submitted to SACAA once preferred bidder status is obtained. As this theme has been identified as a low sensitivity, no compliance statement is required.
Defence	The Department of Defence will be included on the project stakeholder database. They will be informed of the proposed Project, and comment will be sought. As this theme has been identified as a low sensitivity, no compliance statement is required.

25

25

wsp

Permitting Processes

### Competent Authority

- o **Section 24C(2)(a) of NEMA**
  - The Minister must be identified as the Competent Authority (CA) if the activity has implications for international environmental commitments or relations
- o **Section 24C(2)(d)(iii) of NEMA**
  - The Minister must be identified as the Competent Authority (CA) if the activity is undertaken by a statutory body, excluding any municipality, performing an exclusive competence of the national sphere of government
- o **GN 779 of 01 July 2016**
  - Identifies the Minister as the CA for the consideration and processing of environmental authorisations and amendments thereto for activities related the Integrated Resource Plan (IRP) 2010 – 2030
- o **DFFE** is therefore deemed to be the Competent Authority

26

26

wsp

Public Participation Process

### Public Participation Plan

- o A Consolidated Public Participation Process is proposed for all applications
- o Formally announce project via:
  - Adverts (English and Afrikaans in local newspaper)
  - Site notices
  - Utilising existing stakeholder databases
- o Compilation and management of I&AP Database
- o Written notification:
  - Owners and occupiers on or adjacent to the proposed project site
  - Municipality Ward Councillor
  - District Municipality
  - Relevant State Departments
- o Draft Reports Review for 30 days:
  - Online on the WSP website
  - Online on a data free website
  - Hard copies placed at local libraries
  - An audio presentation of the project (voiced over PowerPoint) in English and Afrikaans will be made available

27

27

wsp

Timeframes

### Timeframes

- o Authority Timeframes
  - Does fall within a Strategic Transmission Corridor (GN 113)
  - Does fall within a REDZ (GN 114)
  - Authority decision making timeframe is 107 days for S&EIA
  - Authority decision making timeframe is 54 days for BA
- o Key Milestones
  - Submission of Application Forms – January 2023
  - Draft Scoping Report Public Review – January to February 2023
  - Submission of Final Scoping Reports – March 2023
  - Draft EIA and BA Reports Public Review – June 2023
  - Submission of Final EIA and BA Reports – August 2023

28

28



wsp

Discussion

### Specific Clarification

- We are proposing that the specialists produced combined reports for the solar projects. However, project specific impacts will be assessed separately (As per Regulation 11 of EIA Regs)
- Mura 2 Solar PV Facility falls partially within the REDZ, the DFFE Screening Tool identifies the project falling within the Beaufort West REDZ. Please confirm whether Mura 2 can be considered falling within the REDZ and subject to a BA?
- In the event that Mura 2 is subject to a BA, we would like to submit two BA applications for Mura 1 and 2, but one combined BA Report.
- In the event that Mura 2 is subject to an EIA, we would like to submit three applications but one combined report (Scoping and EIA) for Mura 2, 3 and 4.
- Corridor B falls within a Strategic Transmission Corridor and avoids Very High and High sensitive areas as confirmed by the specialists. In our interpretation the project qualifies for Registration of a Transmission Line as per Government Notice No. 2313 published in Government Gazette No. 47095 of 27 July 2022?
- When should this registration process begin?


29

29

wsp


Discussion

- Questions
- Way Forward







30

30



# Thank you

in    

wsp.com

31

APPENDIX B

MS TEAMS ATTENDANCE RECORD

## Attendance Report

### 1. Summary

Meeting title	2022-09-0002: DFFE Pre-Application Meeting – RedCap Mura Solar PhotoVoltaic Development
Attended participants	6
Start time	22/09/22, 09:58:10
End time	22/09/22, 10:47:33
Meeting duration	49m 24s
Average attendance time	46m 46s

### 2. Participants

Name	First join	Last leave	In-meeting duration	Email	Participant ID (UPN)	Role
Strong, Ashlea	22/09/22, 09:58:27	22/09/22, 10:47:33	49m 6s	Ashlea.Strong@wsp.com	Ashlea.Strong@wsp.com	Presenter
Govender, Megan	22/09/22, 09:58:35	22/09/22, 10:47:16	48m 41s	Megan.Govender@wsp.com	Megan.Govender@wsp.com	Organizer
Surina Laurie (Red Cap) (Guest)	22/09/22, 10:00:14	22/09/22, 10:47:06	46m 52s			Presenter
Jessica Els	22/09/22, 10:00:34	22/09/22, 10:47:06	46m 31s	jessica@red-cap.co.za	jessica@red-cap.co.za	Presenter
Lerato Mokoena	22/09/22, 10:02:19	22/09/22, 10:47:11	44m 51s	LMOKOENA@dffe.gov.za	lmokoena@environment.gov.za	Presenter
Jay-Jay Mpelane	22/09/22, 10:02:36	22/09/22, 10:47:10	44m 33s	JMPELANE@dffe.gov.za	jmpelane@environment.gov.za	Presenter

### 3. In-Meeting activities

Name	Join time	Leave time	Duration	Email	Role
Strong, Ashlea	22/09/22, 09:58:27	22/09/22, 10:47:33	49m 6s	Ashlea.Strong@wsp.com	Presenter
Govender, Megan	22/09/22, 09:58:35	22/09/22, 10:47:16	48m 41s	Megan.Govender@wsp.com	Organizer
Surina Laurie (Red Cap) (Guest)	22/09/22, 10:00:14	22/09/22, 10:47:06	46m 52s		Presenter
Jessica Els	22/09/22, 10:00:34	22/09/22, 10:47:06	46m 31s	jessica@red-cap.co.za	Presenter
Lerato Mokoena	22/09/22, 10:02:19	22/09/22, 10:47:11	44m 51s	LMOKOENA@dffe.gov.za	Presenter
Jay-Jay Mpelane	22/09/22, 10:02:36	22/09/22, 10:47:10	44m 33s	JMPELANE@dffe.gov.za	Presenter

## Govender, Megan

---

**From:** Jay-Jay Mpelane <JMPELANE@dffe.gov.za>  
**Sent:** Wednesday, 02 November 2022 12:39  
**To:** Govender, Megan; Lerato Mokoena; Ephron Maradwa; Nyiko Nkosi  
**Cc:** jessica@red-cap.co.za; Strong, Ashlea; 'Surina Laurie'  
**Subject:** RE: 2022-09-0002\_DFFE Pre-Application Meeting Minutes for Mura Solar PV Development

Dear Govender.

The minutes are indeed adopted, however, these minutes are not exempting you from perform your duties as per require throughout the EIA process. E.g. if you omit anything during EIA process, you are not going to blame this Department for not advising you.

Regards,  
Jay.

---

**From:** Govender, Megan <Megan.Govender@wsp.com>  
**Sent:** 01 November 2022 01:19 PM  
**To:** Jay-Jay Mpelane <JMPELANE@dffe.gov.za>; Lerato Mokoena <LMOKOENA@dffe.gov.za>; Ephron Maradwa <EMaradwa@dffe.gov.za>; Nyiko Nkosi <NNKOSI@dffe.gov.za>  
**Cc:** jessica@red-cap.co.za; Strong, Ashlea <Ashlea.Strong@wsp.com>; 'Surina Laurie' <surina@red-cap.co.za>  
**Subject:** FW: 2022-09-0002\_DFFE Pre-Application Meeting Minutes for Mura Solar PV Development

Good Day Jay

I hope you are well.

I have tried calling you today. In reference to my email below, please may you approve the pre-application meeting minutes. I have attached it again for ease of reference.

Kind Regards,



**Megan Govender**  
Senior Consultant

T +27 011 361 1300  
M +27 083 228 5288

---

**From:** Govender, Megan  
**Sent:** Wednesday, 28 September 2022 10:25  
**To:** Jay-Jay Mpelane <[JMPELANE@dffe.gov.za](mailto:JMPELANE@dffe.gov.za)>; Lerato Mokoena <[LMOKOENA@dffe.gov.za](mailto:LMOKOENA@dffe.gov.za)>; Ephron Maradwa <[EMaradwa@dffe.gov.za](mailto:EMaradwa@dffe.gov.za)>; Nyiko Nkosi <[NNKOSI@dffe.gov.za](mailto:NNKOSI@dffe.gov.za)>  
**Cc:** Jessica Els <[jessica@red-cap.co.za](mailto:jessica@red-cap.co.za)>; Strong, Ashlea <[Ashlea.Strong@wsp.com](mailto:Ashlea.Strong@wsp.com)>; Surina Laurie <[surina@red-cap.co.za](mailto:surina@red-cap.co.za)>  
**Subject:** 2022-09-0002\_DFFE Pre-Application Meeting Minutes for Mura Solar PV Development

Good Day

Please find attached for your approval the pre-application meeting minutes for the Mura Solar PV Development that took place on 22 September 2022.

Kind Regards,



**Megan Govender**  
Senior Consultant

T +27 083 228 5288  
M +27 083 228 5288



WSP in Africa  
Building C  
Knightsbridge  
33 Sloane Street, Bryanston  
2191 South Africa

[wsp.com](http://wsp.com)

WSP is a proud Level 1 B-BBEE contributor

Confidential

This message, including any document or file attached, is intended only for the addressee and may contain privileged and/or confidential information. Any other person is strictly prohibited from reading, using, disclosing or copying this message. If you have received this message in error, please notify the sender and delete the message. Thank you.

WSP Group Africa (Pty) Ltd, Registered Office: Building C, Knightsbridge, 33 Sloane Street, Bryanston, 2191, South Africa Registered Number: 1999/008928/07 South Africa

---

NOTICE: This communication and any attachments ("this message") may contain information which is privileged, confidential, proprietary or otherwise subject to restricted disclosure under applicable law. This message is for the sole use of the intended recipient(s). Any unauthorized use, disclosure, viewing, copying, alteration, dissemination or distribution of, or reliance on, this message is strictly prohibited. If you have received this message in error, or you are not an authorized or intended recipient, please notify the sender immediately by replying to this message, delete this message and all copies from your e-mail system and destroy any printed copies.

-LAEhHhHzdJzBITWfa4Hgs7pbKI