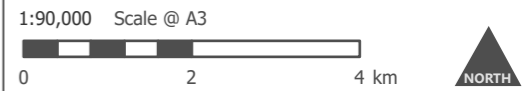
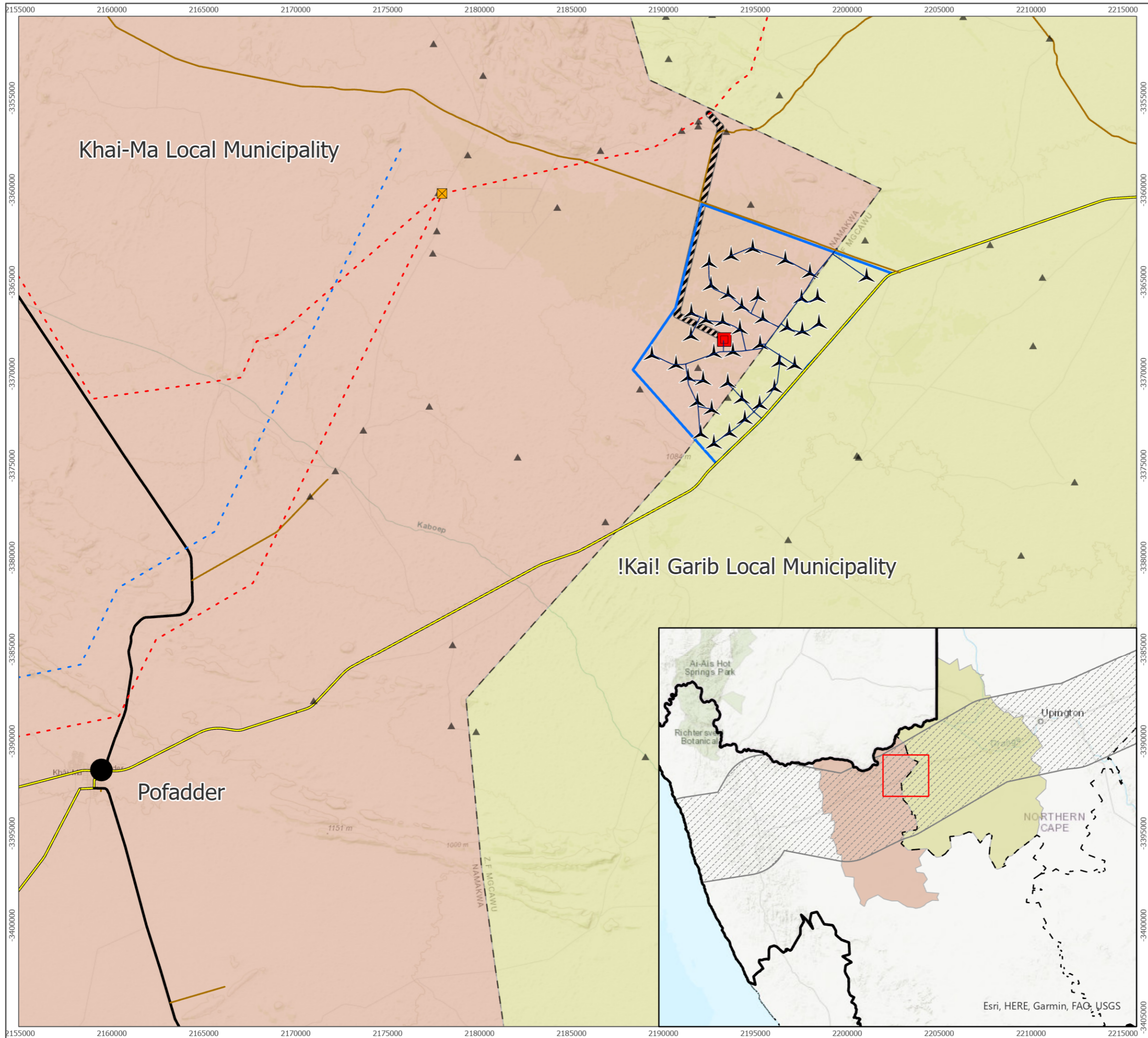


- Farm Portions
- Turbine Layout
- Existing Eskom Substation
- Substation Compound Option A
- Substation Compound Option B
- Substation Compound Option C
- Existing Eskom Transmission Lines
- Roads, Hardstands and Substations
- Grid Connecting Substation Options A, B, C
- Grid Option A
- Grid Option B
- Grid Option C



Produced By: MB	Ref: 3073-REP-002
Checked By: JA	Date: 16/07/2019

**Proposed Development Plan**  
Figure 7.1



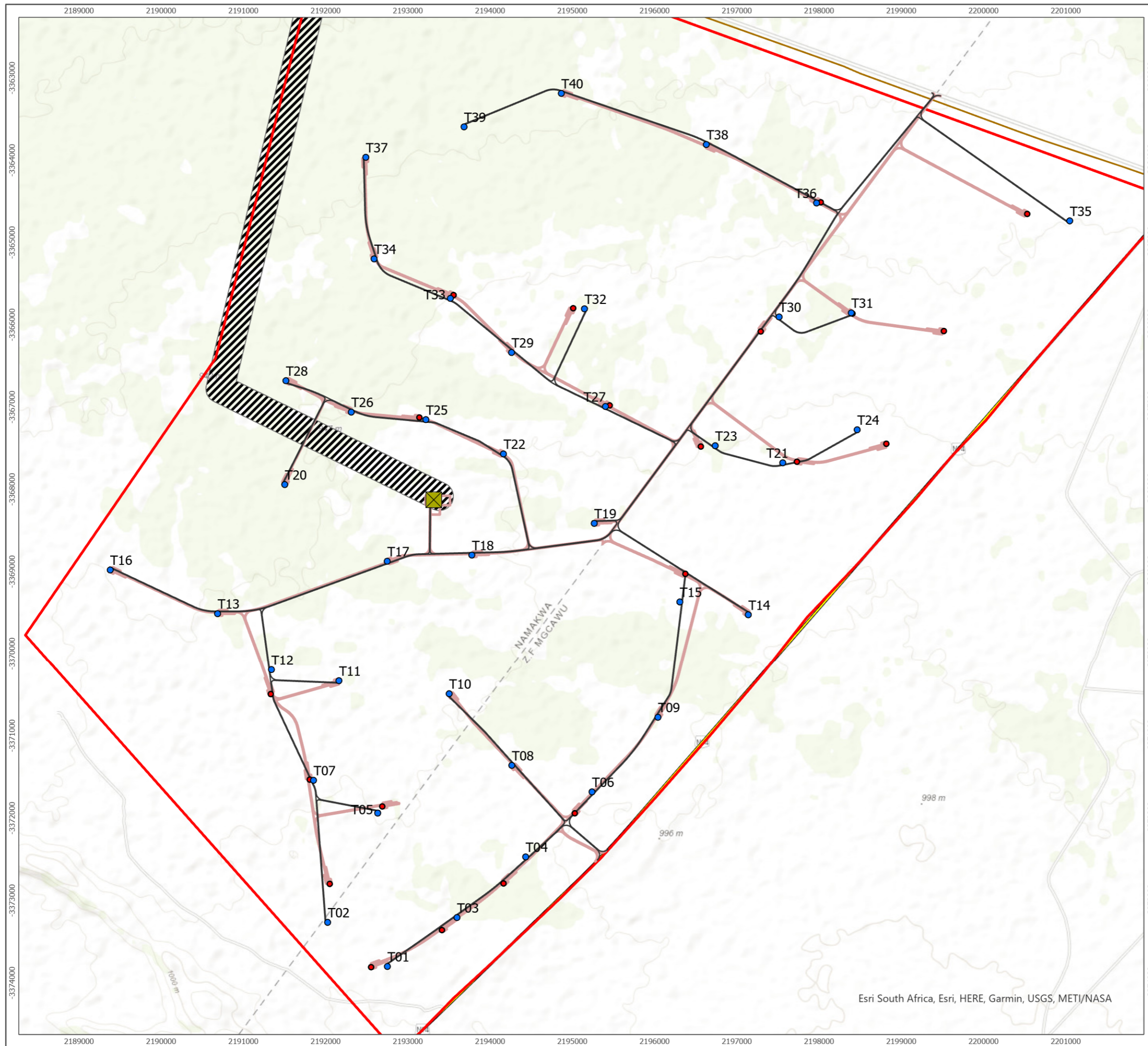
- ▲ Existing Houses
- Existing Roads
  - N14 Highway
  - R358
  - Unclassified Road
- Eskom Infrastructure
  - ⊠ Eskom Paulputs Substation
  - - - Existing Eskom Transmission Lines
  - - - Planned Eskom Transmission Lines
- Paulputs North WEF
  - ▭ Paulputs North WEF Site
  - ▨ Approved Paulputs WEF Corridor
  - ▲ Paulputs North WTG
  - Approved Substation Yard
  - Paulputs North Internal Roads
- Boundaries
  - ▭ Kai !Garib
  - ▭ Khai-Ma
  - ▨ Northern\_Corridor
  - - - District Municipalities
  - ▭ Northern Cape Province



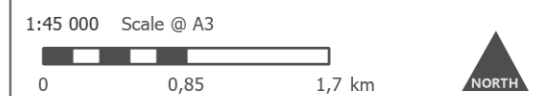
Produced By: ABL	Ref: 3944-GIS-001
Checked By: MB	Date: 2020/11/25

Paulputs North WEF Amendment  
Project Locality

**Part II Amendment  
Figure 1.1**



- Substation Compound Option A
- Amended WTG Layout
- Approved Paulputs Turbine Placement
- Amended Internal Roads
- Roads, Hardstands and Substations
- N14 Highway
- R358
- Unclassified Road
- Approved Paulputs WEF Corridor
- Paulputs North WEF Site

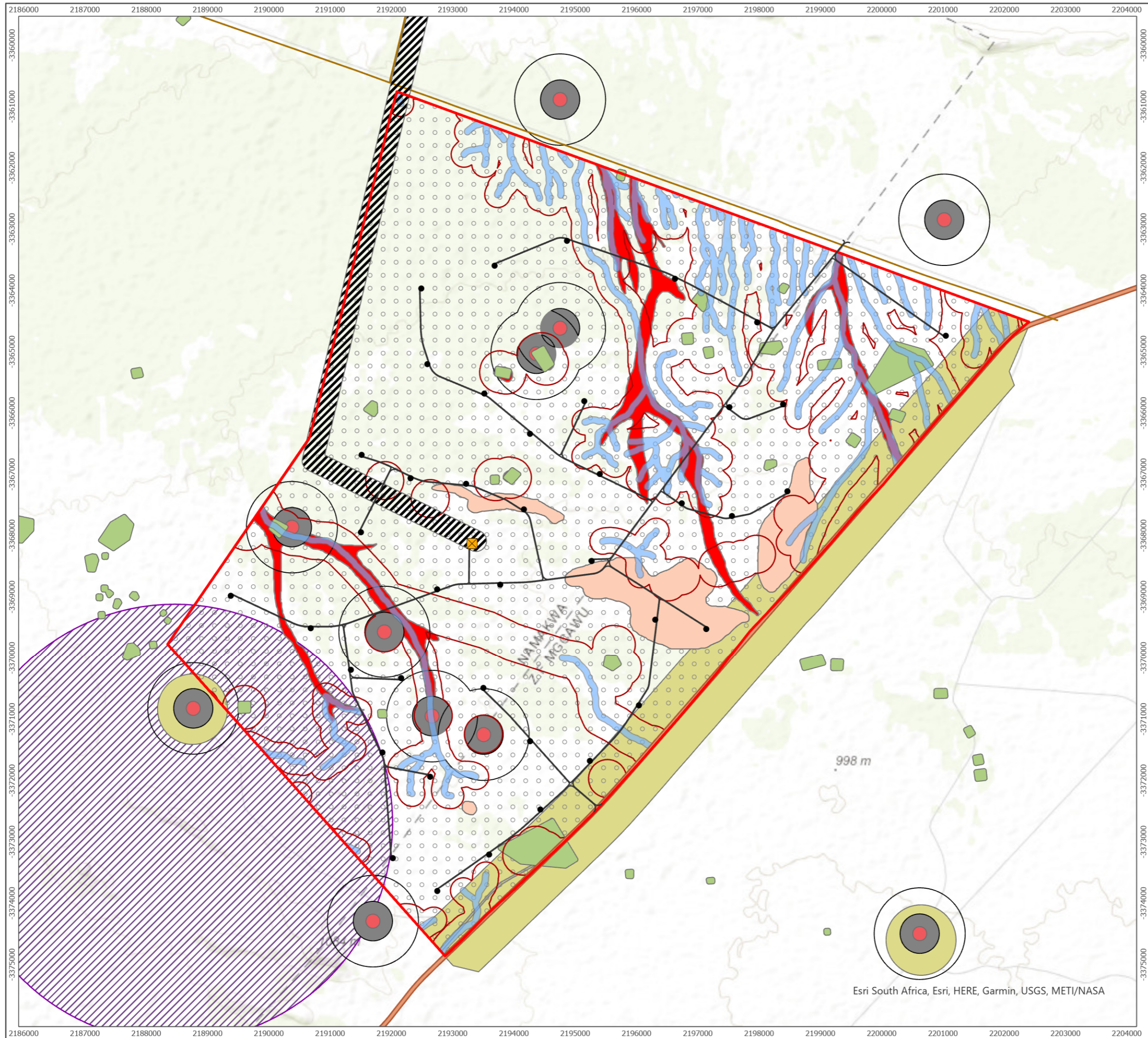


Produced By: ABL	Ref: 3944-GIS-002
Checked By: MB	Date: 2021/07/22

Paulputs North WEF Amendment  
Amended Layout

**Part II Amendment Application**  
**Figure 2**

Esri South Africa, Esri, HERE, Garmin, USGS, METI/NASA



- Paulputs North WEF**
- Amended WTG Layout
  - Substation Compound Option A
  - Amended Internal Roads
  - Paulputs North WEF Site
  - ▨ Approved Paulputs WEF Corridor
- Eskom Infrastructure**
- Eskom Paulputs Substation
  - - - Existing Eskom Transmission Lines
  - - - Planned Eskom Transmission Lines
- Existing Roads**
- N14 Highway
  - R358
  - Unclassified Road
- Paulputs North Site Sensitivity**
- Bat Buffer 110m Blade
  - ▨ Avifauna Buffer 110m Blade
  - Drainage Buffer 45m
  - Ecological Sensitivity High
  - Ecological Sensitivity Low
  - Ecological Sensitivity Medium
  - Noise Sensitivity High
  - Noise Sensitivity Medium
  - Noise - No Go
  - Visual Sensitivity High
  - Heritage Sensitivity Medium

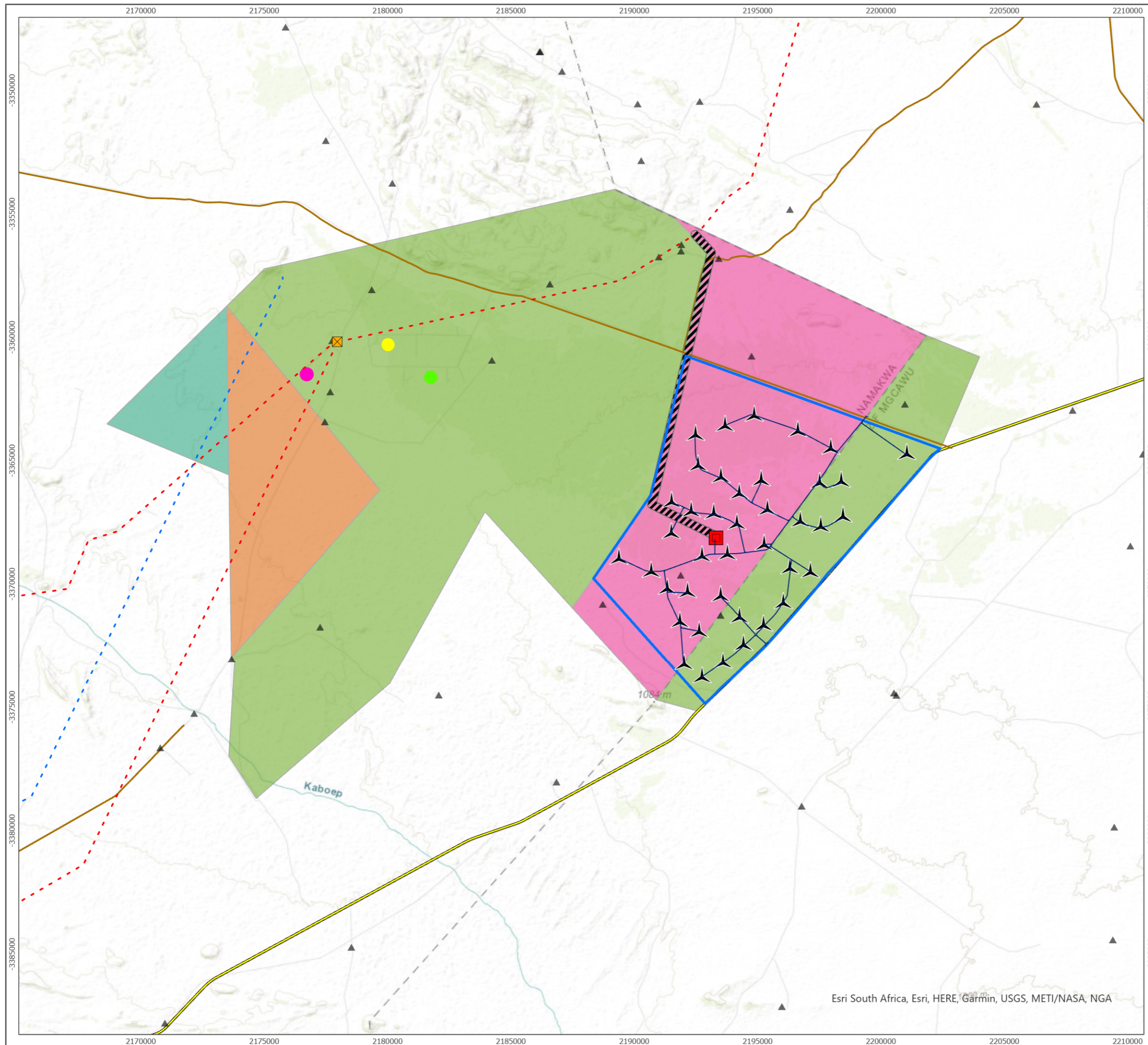


Produced By: ABL	Ref: 3944-GIS-003
Checked By: MB	Date: 2021/07/22

Paulputs North WEF Amendment  
Site Sensitivity

**Part II Amendment Application  
Figure 3**

Esri South Africa, Esri, HERE, Garmin, USGS, METI/NASA



**Paulputs North WEF**

- Paulputs North Internal Roads
- ▲ Paulputs North WTG
- Approved Substation Yard
- Paulputs North WEF Site
- ▨ Approved Paulputs WEF Corridor
- ▲ Existing Houses

**Existing Roads**

- N14 Highway
- R358
- Unclassified Road

**Eskom Infrastructure**

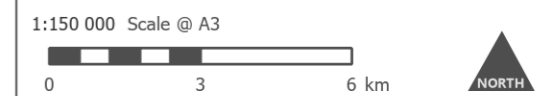
- ⊠ Eskom Paulputs Substation
- - - Existing Eskom Transmission Lines
- - - Planned Eskom Transmission Lines

**Constructed REEA**

- KaXu Solar One
- Konkoonies 1 SEF
- Xina Solar One

**Proposed REEA**

- Proposed 100MW solar PV Paulputs PV1
- Proposed 100MW solar PV Paulputs PV2
- Proposed 75MW Khoi-Sun Solar
- Proposed Solar Project
- Proposed 300 MW Paulputs WEF

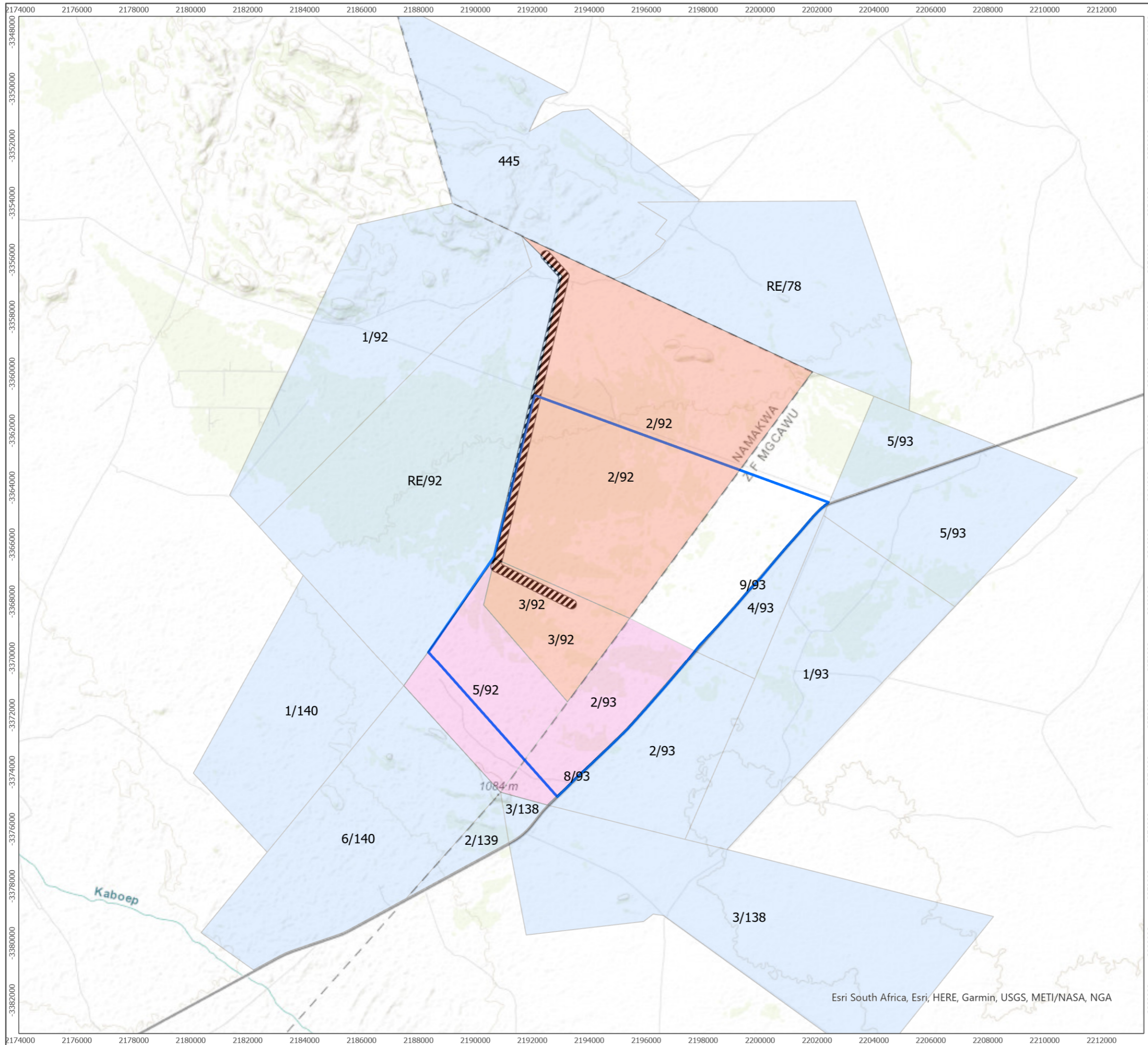


Produced By: ABL	Ref: 3944-GIS-004
Checked By: MB	Date: 2021/07/22

Paulputs North WEF Amendment  
Renewable Energy Developments  
within 35km

**Part II Amendment  
Figure 4**

Esri South Africa, Esri, HERE, Garmin, USGS, METI/NASA, NGA



- Directly Affected Landowners Grid
- Directly Affected Landowners WEF
- Indirectly Affected Landowners
- Paulputs North WEF Site
- Approved Paulputs WEF Corridor



Produced By: ABL	Ref: 3944-GIS-010
Checked By: MB	Date: 2021/07/22

Paulputs North WEF Amendment  
Landowner Map

**Part II Amendment  
Figure 6**

Esri South Africa, Esri, HERE, Garmin, USGS, METI/NASA, NGA