

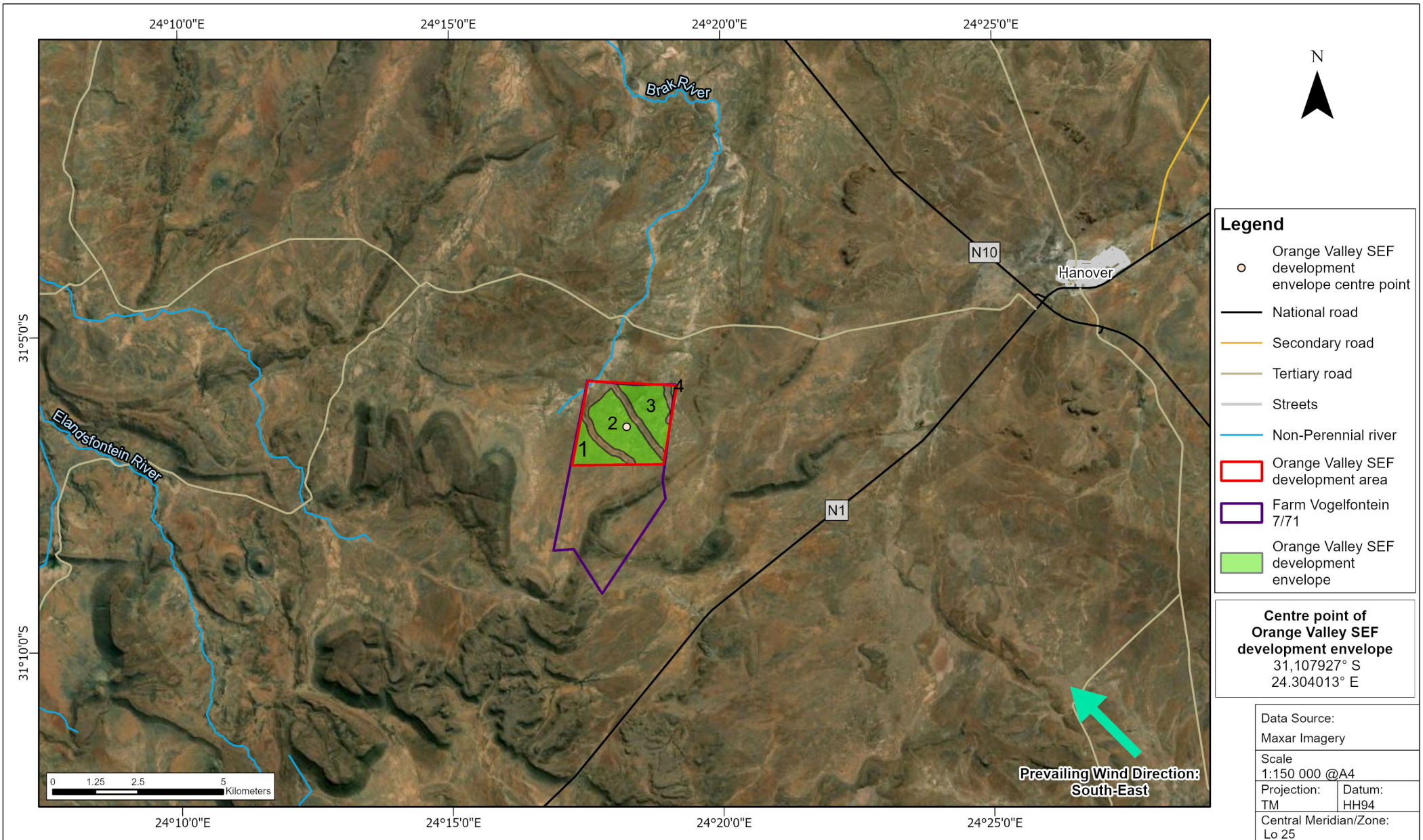
Orange Valley 1		Orange Valley 2		Orange Valley 3		Orange Valley 4	
Latitude	Longitude	Latitude	Longitude	Latitude	Longitude	Latitude	Longitude
-31.118	24.2963	-31.1132	24.3126	-31.0973	24.3012	-31.0971	24.31859
-31.1179	24.2971	-31.1131	24.3115	-31.0995	24.3026	-31.097	24.31759
-31.1179	24.3046	-31.1131	24.3115	-31.0995	24.3038	-31.0976	24.31761
-31.1177	24.3046	-31.1131	24.3114	-31.0996	24.3038	-31.0979	24.3178
-31.1176	24.3045	-31.112	24.3114	-31.1009	24.3048	-31.098	24.3179
-31.1176	24.3043	-31.1119	24.3105	-31.1018	24.3053	-31.0981	24.31792
-31.1175	24.3042	-31.1106	24.3105	-31.1031	24.3061	-31.0982	24.31792
-31.1174	24.3042	-31.1106	24.3095	-31.1039	24.3061	-31.0983	24.31792
-31.1172	24.3039	-31.11	24.3095	-31.106	24.3074	-31.0988	24.31782
-31.1172	24.3036	-31.1087	24.3091	-31.1061	24.3085	-31.0991	24.3178
-31.1171	24.3036	-31.1087	24.3079	-31.1062	24.3086	-31.0994	24.31787
-31.1171	24.3035	-31.1086	24.3079	-31.1062	24.3087	-31.1	24.31789
-31.1169	24.3035	-31.1085	24.3078	-31.1063	24.3087	-31.1004	24.31815
-31.1168	24.303	-31.1073	24.3078	-31.1077	24.3091	-31.1005	24.31836
-31.1168	24.3029	-31.1065	24.307	-31.109	24.3108	-31.0997	24.31843
-31.1165	24.3029	-31.1065	24.3059	-31.1097	24.3108		
-31.1165	24.3025	-31.1064	24.3059	-31.112	24.3123		
-31.1162	24.3025	-31.1064	24.3058	-31.1132	24.3142		
-31.1161	24.3021	-31.1063	24.3058	-31.1135	24.3145		
-31.116	24.3019	-31.1048	24.3057	-31.1135	24.3146		
-31.116	24.3015	-31.1047	24.3046	-31.1136	24.3147		
-31.1157	24.3015	-31.1047	24.3046	-31.1136	24.3148		
-31.1157	24.3009	-31.1047	24.3046	-31.1136	24.3149		
-31.1156	24.3004	-31.1046	24.3046	-31.1137	24.315		
-31.1156	24.2998	-31.1039	24.3045	-31.1138	24.3151		
-31.1156	24.2998	-31.1026	24.3042	-31.1138	24.3151		
-31.1155	24.2997	-31.1018	24.3035	-31.1139	24.3152		
-31.1155	24.2996	-31.1007	24.303	-31.114	24.3152		
-31.1155	24.2996	-31.1001	24.3022	-31.1141	24.3153		
-31.1155	24.2995	-31.0997	24.3014	-31.1142	24.3153		
-31.1154	24.2995	-31.0997	24.301	-31.1142	24.3154		
-31.1154	24.2994	-31.0996	24.301	-31.1143	24.3154		
-31.115	24.2994	-31.0996	24.3009	-31.1148	24.3154		
-31.1149	24.2986	-31.0996	24.3009	-31.1151	24.3159		
-31.1145	24.2986	-31.0983	24.3009	-31.1145	24.3162		
-31.1145	24.2979	-31.0982	24.2999	-31.1104	24.3169		
-31.1144	24.2978	-31.0981	24.2998	-31.1072	24.3171		
-31.1143	24.2978	-31.0976	24.2998	-31.1072	24.3174		
-31.1143	24.2977	-31.0976	24.2995	-31.1072	24.3173		

Orange Valley 1		Orange Valley 2		Orange Valley 3		Orange Valley 4	
Latitude	Longitude	Latitude	Longitude	Latitude	Longitude	Latitude	Longitude
-31.114	24.2977	-31.0977	24.2995	-31.1072	24.3171		
-31.1139	24.2973	-31.0978	24.2994	-31.1072	24.317		
-31.1138	24.297	-31.0978	24.2994	-31.1072	24.3169		
-31.1138	24.2969	-31.0979	24.2993	-31.1072	24.3168		
-31.1138	24.2969	-31.098	24.2992	-31.1071	24.3167		
-31.1137	24.2968	-31.098	24.2991	-31.1071	24.3167		
-31.1137	24.2968	-31.0981	24.299	-31.107	24.3166		
-31.1134	24.2967	-31.0988	24.2989	-31.107	24.3165		
-31.1134	24.2963	-31.1002	24.2979	-31.1069	24.3164		
-31.1133	24.2963	-31.1003	24.2965	-31.1068	24.3163		
-31.1133	24.2963	-31.1004	24.2964	-31.1068	24.3163		
-31.1133	24.2962	-31.1005	24.2962	-31.1067	24.3162		
-31.1133	24.2962	-31.1007	24.2961	-31.1066	24.3162		
-31.1128	24.2962	-31.1008	24.2958	-31.1065	24.3162		
-31.1128	24.2955	-31.1008	24.2957	-31.1064	24.3161		
-31.1127	24.2955	-31.1009	24.2956	-31.1063	24.3161		
-31.1122	24.2955	-31.1026	24.2955	-31.1062	24.3161		
-31.1122	24.2949	-31.1026	24.2928	-31.1062	24.3161		
-31.1118	24.2949	-31.1027	24.2927	-31.1061	24.3162		
-31.1114	24.2944	-31.1033	24.2927	-31.106	24.3162		
-31.1114	24.2939	-31.1039	24.2925	-31.1059	24.3162		
-31.1113	24.2938	-31.1042	24.2923	-31.1053	24.3163		
-31.1113	24.2938	-31.1042	24.2923	-31.1048	24.3169		
-31.1112	24.2938	-31.1048	24.2923	-31.1047	24.317		
-31.1112	24.2937	-31.1053	24.2923	-31.1044	24.317		
-31.1107	24.2937	-31.1058	24.2925	-31.1042	24.3173		
-31.1107	24.2932	-31.1058	24.293	-31.1027	24.3173		
-31.1106	24.2932	-31.1059	24.2931	-31.1026	24.3168		
-31.1106	24.2931	-31.1059	24.2931	-31.1025	24.3168		
-31.1105	24.2931	-31.106	24.2931	-31.1019	24.3166		
-31.1105	24.2931	-31.1065	24.2932	-31.1014	24.3165		
-31.1101	24.2931	-31.1066	24.2935	-31.1007	24.3164		
-31.11	24.2927	-31.1067	24.2935	-31.0996	24.316		
-31.11	24.2927	-31.1073	24.2936	-31.0995	24.3156		
-31.1099	24.2926	-31.1074	24.2938	-31.0993	24.3156		
-31.1099	24.2926	-31.1075	24.2939	-31.0991	24.3156		
-31.1096	24.2926	-31.1075	24.2939	-31.099	24.3156		
-31.1096	24.2925	-31.1076	24.2939	-31.0983	24.3158		
-31.1095	24.2925	-31.1077	24.2939	-31.0981	24.3158		
-31.1095	24.2924	-31.108	24.2939	-31.0971	24.3156		
-31.1095	24.2924	-31.1081	24.294	-31.0971	24.3154		
-31.1094	24.2924	-31.1082	24.2941	-31.097	24.3154		

Orange Valley 1		Orange Valley 2		Orange Valley 3		Orange Valley 4	
Latitude	Longitude	Latitude	Longitude	Latitude	Longitude	Latitude	Longitude
-31.1094	24.2924	-31.1082	24.2941	-31.0969	24.3154		
-31.1093	24.2924	-31.1085	24.2941	-31.0968	24.3149		
-31.1093	24.2923	-31.1086	24.2943	-31.0969	24.3105		
-31.1093	24.2923	-31.1086	24.2943	-31.0965	24.3065		
-31.1092	24.2923	-31.1087	24.2943				
-31.1087	24.2923	-31.1087	24.2943				
-31.1087	24.2921	-31.1087	24.2943				
-31.1086	24.292	-31.1087	24.2943				
-31.1085	24.292	-31.1088	24.2943				
-31.1085	24.292	-31.1088	24.2944				
-31.1084	24.292	-31.1091	24.2944				
-31.1081	24.292	-31.1095	24.2945				
-31.108	24.2918	-31.1095	24.2948				
-31.1079	24.2918	-31.1096	24.2949				
-31.1079	24.2918	-31.1096	24.2949				
-31.1078	24.2918	-31.1097	24.2949				
-31.1078	24.2918	-31.1097	24.295				
-31.1073	24.2918	-31.11	24.295				
-31.1069	24.2916	-31.1104	24.2953				
-31.1069	24.2914	-31.1104	24.2958				
-31.1063	24.2914	-31.1105	24.2959				
-31.1063	24.2907	-31.1105	24.2959				
-31.1062	24.2907	-31.1105	24.2959				
-31.1062	24.2907	-31.111	24.296				
-31.1061	24.2906	-31.1115	24.2965				
-31.1061	24.2906	-31.1118	24.297				
-31.1061	24.2906	-31.1119	24.2974				
-31.106	24.2906	-31.1119	24.2975				
-31.106	24.2905	-31.1119	24.2975				
-31.1052	24.2905	-31.1119	24.2976				
-31.1051	24.2902	-31.112	24.2976				
-31.1051	24.2902	-31.1123	24.2976				
-31.105	24.2902	-31.1124	24.2981				
-31.1049	24.2902	-31.1125	24.2982				
-31.1069	24.2902	-31.1125	24.2984				
-31.1084	24.2898	-31.1126	24.2985				
-31.1095	24.2894	-31.1126	24.2986				
-31.115	24.2892	-31.1126	24.2986				
-31.118	24.2879	-31.1131	24.2987				
-31.118	24.2872	-31.1131	24.2991				
		-31.1135	24.2992				
		-31.1138	24.2998				

Orange Valley 1		Orange Valley 2		Orange Valley 3		Orange Valley 4	
Latitude	Longitude	Latitude	Longitude	Latitude	Longitude	Latitude	Longitude
		-31.1139	24.3004				
		-31.1139	24.3007				
		-31.1139	24.3007				
		-31.1139	24.301				
		-31.1139	24.301				
		-31.114	24.3013				
		-31.114	24.3014				
		-31.114	24.3015				
		-31.114	24.3015				
		-31.1141	24.3016				
		-31.1141	24.3018				
		-31.1141	24.3018				
		-31.1142	24.3021				
		-31.1143	24.3021				
		-31.1145	24.3023				
		-31.1145	24.3029				
		-31.1145	24.303				
		-31.1146	24.303				
		-31.1146	24.3031				
		-31.1146	24.3031				
		-31.1146	24.3032				
		-31.1146	24.3032				
		-31.1147	24.3033				
		-31.1147	24.3033				
		-31.1151	24.3033				
		-31.1154	24.3039				
		-31.1156	24.3042				
		-31.1157	24.3047				
		-31.1157	24.3047				
		-31.1157	24.3048				
		-31.1158	24.3048				
		-31.1158	24.3049				
		-31.1158	24.3049				
		-31.116	24.305				
		-31.1162	24.3053				
		-31.1162	24.3058				
		-31.1163	24.3058				
		-31.1163	24.3059				
		-31.1164	24.306				
		-31.1164	24.3061				
		-31.1165	24.3061				
		-31.1166	24.3062				

Orange Valley 1		Orange Valley 2		Orange Valley 3		Orange Valley 4	
Latitude	Longitude	Latitude	Longitude	Latitude	Longitude	Latitude	Longitude
		-31.1166	24.3062				
		-31.1172	24.3062				
		-31.1172	24.3066				
		-31.1173	24.3066				
		-31.1173	24.3066				
		-31.1174	24.3066				
		-31.1175	24.3066				
		-31.1176	24.3067				
		-31.1176	24.3067				
		-31.1177	24.3067				
		-31.1177	24.3067				
		-31.1178	24.3067				
		-31.1179	24.3067				
		-31.1179	24.3067				
		-31.1179	24.3085				
		-31.1179	24.3093				
		-31.1171	24.3157				
		-31.1171	24.3158				
		-31.1171	24.3158				
		-31.1171	24.3157				
		-31.1171	24.3156				
		-31.117	24.3155				
		-31.117	24.3155				
		-31.117	24.3154				
		-31.1167	24.3153				
		-31.1167	24.3149				
		-31.1166	24.3149				
		-31.1166	24.3148				
		-31.1165	24.3148				
		-31.116	24.3148				
		-31.1152	24.3142				
		-31.1152	24.3134				



- Legend**
- Orange Valley SEF development envelope centre point
  - National road
  - Secondary road
  - Tertiary road
  - Streets
  - Non-Perennial river
  - ▭ Orange Valley SEF development area
  - ▭ Farm Vogelfontein 7/71
  - ▭ Orange Valley SEF development envelope

**Centre point of Orange Valley SEF development envelope**  
 31,107927° S  
 24.304013° E

Data Source:  
 Maxar Imagery

Scale  
 1:150 000 @A4

Projection: TM Datum: HH94

Central Meridian/Zone: Lo 25

Date: Compiled by:

10/05/2023 BRCH

Project No. Fig No.  
**583169**



**HANOVER RENEWABLE ENERGY CLUSTER  
 ORANGE VALLEY SEF DEVELOPMENT AREA AND ENVELOPE**