

Ihlahla 1		Ihlahla 2		Ihlahla Hole	
Latitude	Longitude	Latitude	Longitude	Latitude	Longitude
-31.2181	24.28535	-31.21	24.2872	-31.2218	24.27297
-31.2179	24.285	-31.21	24.2872	-31.2217	24.27365
-31.2175	24.2845	-31.2092	24.28725	-31.222	24.27402
-31.2174	24.28381	-31.2085	24.28715	-31.2222	24.27435
-31.2175	24.28376	-31.2085	24.28715	-31.2223	24.27435
-31.2175	24.28373	-31.2075	24.2871	-31.2224	24.27428
-31.2176	24.28369	-31.2074	24.2871	-31.2225	24.27414
-31.2176	24.28366	-31.2073	24.2871	-31.2224	24.27381
-31.2177	24.28362	-31.2072	24.28712	-31.2224	24.27359
-31.2177	24.28358	-31.2072	24.28714	-31.2226	24.27322
-31.2177	24.28356	-31.2067	24.28728	-31.2229	24.27296
-31.2177	24.28353	-31.2065	24.28737	-31.2232	24.273
-31.2178	24.28349	-31.2058	24.28737	-31.2235	24.2727
-31.2178	24.28344	-31.2053	24.28737	-31.2235	24.27242
-31.2182	24.28285	-31.2069	24.28559	-31.2233	24.27232
-31.2182	24.28283	-31.2072	24.28519	-31.223	24.27255
-31.2182	24.2828	-31.2085	24.28367	-31.2228	24.27254
-31.2182	24.28277	-31.2094	24.28265	-31.2227	24.2723
-31.2182	24.28275	-31.2097	24.28227	-31.2225	24.27205
-31.2182	24.28271	-31.2143	24.27697	-31.2223	24.27199
-31.2183	24.28266	-31.2143	24.27691	-31.222	24.27217
-31.2183	24.2826	-31.2179	24.27278	-31.2221	24.27228
-31.2183	24.28255	-31.2178	24.27324	-31.2221	24.27252
-31.2183	24.2825	-31.2178	24.27329	-31.2218	24.27297
-31.2183	24.28244	-31.2178	24.27334		
-31.2183	24.28239	-31.2178	24.27339		
-31.2183	24.28233	-31.2179	24.27457		
-31.2183	24.28228	-31.2179	24.27546		
-31.2183	24.28222	-31.2179	24.27587		
-31.2183	24.28217	-31.2177	24.27659		
-31.2183	24.28211	-31.2174	24.27761		
-31.2183	24.28205	-31.2169	24.27827		
-31.2183	24.282	-31.2169	24.27832		
-31.2181	24.28109	-31.2168	24.27838		
-31.2181	24.28045	-31.2168	24.27843		
-31.2182	24.27995	-31.2168	24.27849		
-31.2183	24.27955	-31.2167	24.27875		
-31.2188	24.27885	-31.2165	24.27913		

Ihlahla 1		Ihlahla 2		Ihlahla Hole	
Latitude	Longitude	Latitude	Longitude	Latitude	Longitude
-31.2189	24.27878	-31.2165	24.2792		
-31.2189	24.27871	-31.2164	24.27926		
-31.219	24.27863	-31.2164	24.27933		
-31.219	24.27854	-31.2164	24.2794		
-31.2194	24.27731	-31.2163	24.27984		
-31.2194	24.27723	-31.2163	24.28045		
-31.2197	24.27632	-31.2163	24.28054		
-31.2197	24.27625	-31.2163	24.28092		
-31.2197	24.27617	-31.2164	24.2814		
-31.2197	24.2761	-31.2164	24.28144		
-31.2197	24.27602	-31.2164	24.28149		
-31.2197	24.27453	-31.2165	24.282		
-31.2197	24.27443	-31.2161	24.2822		
-31.2196	24.27365	-31.2161	24.28223		
-31.2196	24.27321	-31.216	24.28226		
-31.2196	24.27316	-31.216	24.28229		
-31.2196	24.27311	-31.2159	24.28233		
-31.2196	24.27305	-31.2159	24.28237		
-31.2196	24.27301	-31.2159	24.28237		
-31.2196	24.27296	-31.2159	24.28242		
-31.2196	24.27291	-31.2158	24.28246		
-31.2195	24.27286	-31.2158	24.28251		
-31.2195	24.27281	-31.2158	24.28256		
-31.2195	24.27277	-31.2157	24.28261		
-31.2195	24.27273	-31.2157	24.28266		
-31.2194	24.27268	-31.2157	24.28272		
-31.2194	24.27264	-31.2157	24.28277		
-31.2194	24.2726	-31.2157	24.28283		
-31.2194	24.27256	-31.2156	24.28289		
-31.2193	24.27253	-31.2156	24.28295		
-31.2193	24.27249	-31.2155	24.28354		
-31.2193	24.27246	-31.2155	24.28359		
-31.2192	24.27243	-31.2155	24.28365		
-31.2192	24.2724	-31.2155	24.28371		
-31.2192	24.27238	-31.2155	24.28376		
-31.2191	24.27236	-31.2155	24.28382		
-31.2191	24.27233	-31.2155	24.28387		
-31.219	24.27231	-31.2155	24.28393		
-31.219	24.2723	-31.2156	24.28398		
-31.2189	24.27228	-31.2157	24.28476		
-31.2189	24.27227	-31.2155	24.28473		

Ihlahla 1		Ihlahla 2		Ihlahla Hole	
Latitude	Longitude	Latitude	Longitude	Latitude	Longitude
-31.2189	24.27226	-31.2155	24.28471		
-31.2188	24.27226	-31.2154	24.28471		
-31.2188	24.27225	-31.2145	24.28468		
-31.2187	24.27225	-31.2144	24.28468		
-31.2187	24.27225	-31.2142	24.28468		
-31.2186	24.27225	-31.2139	24.28455		
-31.2186	24.27226	-31.2139	24.28451		
-31.2186	24.27227	-31.2134	24.28402		
-31.2185	24.27228	-31.2134	24.28396		
-31.2185	24.27229	-31.2133	24.28389		
-31.2184	24.27231	-31.2131	24.28369		
-31.219	24.27146	-31.2127	24.28336		
-31.2204	24.26976	-31.2126	24.28332		
-31.2267	24.26824	-31.2126	24.28328		
-31.2258	24.26877	-31.212	24.2829		
-31.225	24.27037	-31.2114	24.28236		
-31.2239	24.27196	-31.2114	24.28233		
-31.2237	24.27293	-31.2114	24.2823		
-31.2236	24.27362	-31.2113	24.28228		
-31.2236	24.27427	-31.2113	24.28225		
-31.2234	24.27438	-31.2112	24.28223		
-31.2231	24.27476	-31.2112	24.28221		
-31.2232	24.27547	-31.2112	24.2822		
-31.2234	24.2763	-31.2111	24.28218		
-31.2237	24.27709	-31.2111	24.28217		
-31.2242	24.2778	-31.211	24.28216		
-31.2243	24.27861	-31.211	24.28216		
-31.2243	24.27996	-31.2109	24.28215		
-31.2243	24.2811	-31.2109	24.28215		
-31.2242	24.28222	-31.2109	24.28215		
-31.2239	24.28317	-31.2108	24.28215		
-31.2237	24.2838	-31.2108	24.28216		
-31.2236	24.28438	-31.2107	24.28217		
-31.2237	24.28491	-31.2107	24.28217		
-31.2239	24.28544	-31.2107	24.28218		
-31.2243	24.28556	-31.2106	24.28219		
-31.2248	24.28526	-31.2106	24.28221		
-31.2258	24.28487	-31.2106	24.28223		
-31.226	24.28286	-31.2105	24.28225		
-31.2258	24.27953	-31.2105	24.28227		
-31.2262	24.27799	-31.2104	24.28229		

Ihlahla 1		Ihlahla 2		Ihlahla Hole	
Latitude	Longitude	Latitude	Longitude	Latitude	Longitude
-31.2268	24.27757	-31.2104	24.28232		
-31.2273	24.27723	-31.2104	24.28235		
-31.2268	24.27638	-31.2103	24.28238		
-31.2275	24.27663	-31.2103	24.28241		
-31.2278	24.27715	-31.2103	24.28245		
-31.2283	24.27819	-31.2102	24.28249		
-31.2289	24.2786	-31.2102	24.28253		
-31.2298	24.279	-31.2102	24.28257		
-31.2297	24.27968	-31.2101	24.28261		
-31.2302	24.28014	-31.2101	24.28265		
-31.2309	24.28086	-31.2101	24.2827		
-31.232	24.28152	-31.2101	24.28274		
-31.2331	24.28162	-31.2101	24.28279		
-31.2336	24.28336	-31.21	24.28284		
-31.2345	24.28389	-31.21	24.28288		
-31.2353	24.2845	-31.21	24.28293		
-31.236	24.2855	-31.21	24.28298		
-31.2365	24.28554	-31.21	24.28303		
-31.2371	24.2861	-31.21	24.28309		
-31.2376	24.28686	-31.21	24.28314		
-31.2384	24.28715	-31.21	24.28319		
-31.2395	24.28736	-31.21	24.28324		
-31.24	24.2878	-31.21	24.28329		
-31.2404	24.28833	-31.21	24.28334		
-31.2414	24.28925	-31.21	24.28339		
-31.242	24.28948	-31.21	24.28344		
-31.2426	24.28996	-31.21	24.28349		
-31.2432	24.28811	-31.21	24.28354		
-31.2433	24.28709	-31.2101	24.28359		
-31.2414	24.28438	-31.2101	24.28364		
-31.2391	24.28426	-31.2101	24.28368		
-31.2378	24.28328	-31.2101	24.28373		
-31.236	24.28135	-31.2101	24.28377		
-31.235	24.2796	-31.2102	24.28382		
-31.2338	24.27764	-31.2102	24.28386		
-31.2333	24.27699	-31.2102	24.2839		
-31.2318	24.27658	-31.2102	24.28393		
-31.2296	24.27527	-31.2103	24.28397		
-31.2286	24.27434	-31.2103	24.284		
-31.2295	24.27261	-31.2103	24.28404		
-31.2308	24.27137	-31.211	24.28461		

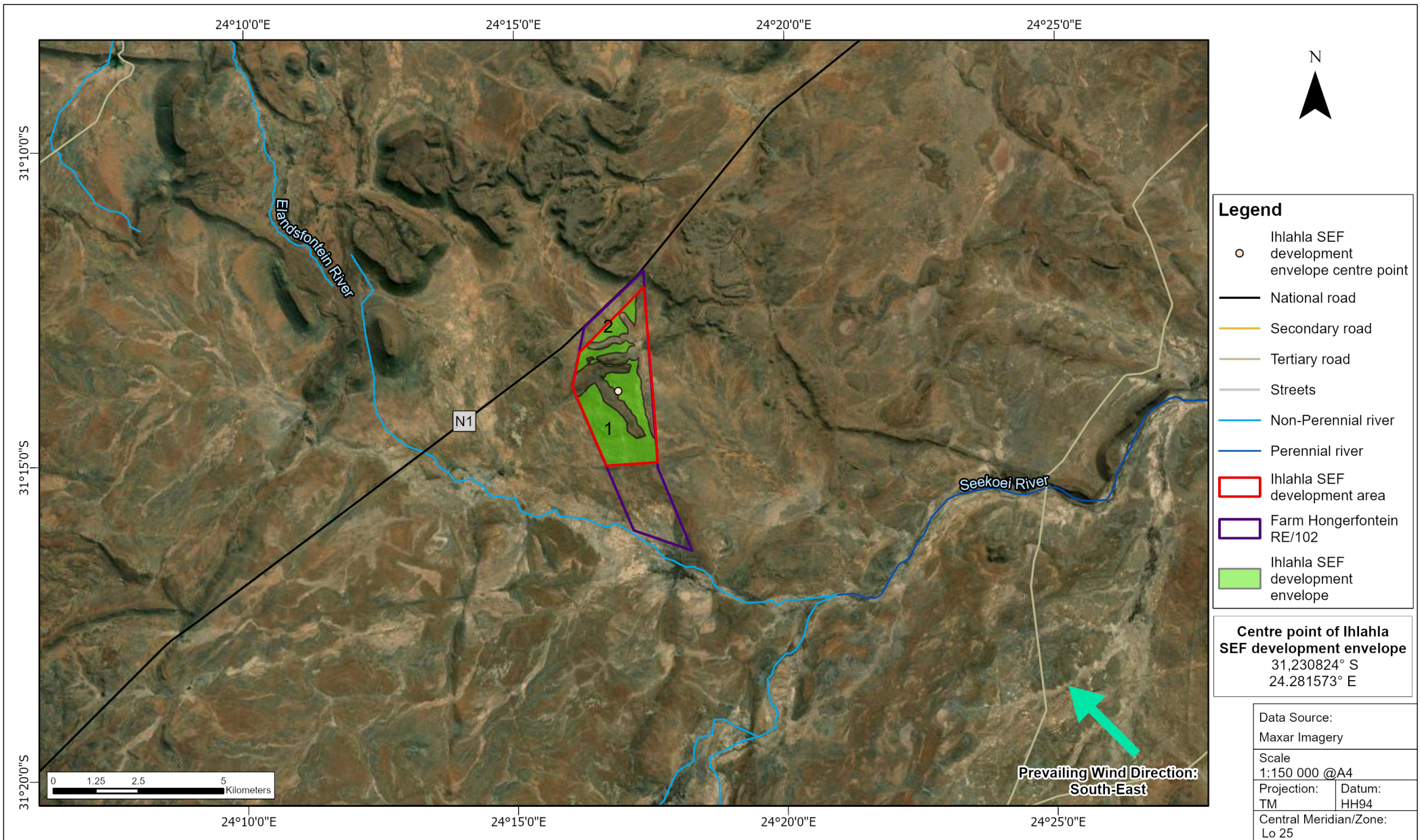
Ihlahla 1		Ihlahla 2		Ihlahla Hole	
Latitude	Longitude	Latitude	Longitude	Latitude	Longitude
-31.232	24.26998	-31.211	24.28465		
-31.2322	24.26877	-31.2111	24.28468		
-31.239	24.27211	-31.2113	24.28485		
-31.2399	24.27258	-31.2114	24.28487		
-31.2506	24.27783	-31.2121	24.28548		
-31.2497	24.29354	-31.2122	24.28555		
-31.2493	24.29351	-31.2122	24.2856		
-31.2481	24.29341	-31.2123	24.2857		
-31.2477	24.29339	-31.2128	24.28625		
-31.2461	24.29326	-31.2129	24.28626		
-31.2434	24.29304	-31.2129	24.28628		
-31.2434	24.29303	-31.2129	24.28632		
-31.2434	24.29297	-31.213	24.28635		
-31.2434	24.29292	-31.213	24.28638		
-31.2434	24.29287	-31.213	24.2864		
-31.2434	24.29282	-31.2131	24.28643		
-31.2434	24.29278	-31.2131	24.28645		
-31.2434	24.29273	-31.2132	24.28647		
-31.2433	24.29268	-31.2137	24.28668		
-31.2433	24.29264	-31.2133	24.28687		
-31.2433	24.29259	-31.2126	24.28709		
-31.2433	24.29255	-31.2118	24.28714		
-31.2432	24.29251	-31.2111	24.28714		
-31.2432	24.29247	-31.211	24.28714		
-31.2432	24.29243	-31.2109	24.28714		
-31.2432	24.29239	-31.21	24.2872		
-31.2431	24.29236				
-31.2431	24.29233				
-31.243	24.2923				
-31.243	24.29227				
-31.243	24.29224				
-31.2429	24.29222				
-31.2429	24.29219				
-31.2429	24.29217				
-31.2412	24.29142				
-31.2411	24.2914				
-31.2411	24.29138				
-31.2404	24.29117				
-31.2403	24.29116				
-31.2403	24.29115				
-31.2387	24.2909				

Ihlahla 1		Ihlahla 2		Ihlahla Hole	
Latitude	Longitude	Latitude	Longitude	Latitude	Longitude
-31.2382	24.29065				
-31.2379	24.29048				
-31.2371	24.29005				
-31.2371	24.29003				
-31.237	24.29001				
-31.237	24.28999				
-31.2369	24.28998				
-31.2369	24.28997				
-31.2368	24.28996				
-31.2368	24.28996				
-31.2367	24.28996				
-31.2357	24.28996				
-31.2349	24.2896				
-31.2348	24.28957				
-31.2348	24.28955				
-31.2347	24.28953				
-31.2346	24.28953				
-31.2334	24.28948				
-31.2326	24.28928				
-31.2326	24.28928				
-31.2314	24.28901				
-31.2314	24.28901				
-31.23	24.28869				
-31.2299	24.28868				
-31.2299	24.28867				
-31.2298	24.28867				
-31.2297	24.28867				
-31.2287	24.28878				
-31.228	24.28878				
-31.2273	24.28842				
-31.2263	24.28766				
-31.2262	24.28762				
-31.2262	24.28762				
-31.2262	24.28759				
-31.2261	24.28756				
-31.2261	24.28754				
-31.226	24.28752				
-31.2259	24.28751				
-31.2259	24.2875				
-31.2258	24.28749				
-31.2251	24.2875				

Ihlahla 1		Ihlahla 2		Ihlahla Hole	
Latitude	Longitude	Latitude	Longitude	Latitude	Longitude
-31.2251	24.2875				
-31.225	24.2875				
-31.225	24.28751				
-31.2249	24.28753				
-31.2235	24.28793				
-31.2231	24.28793				
-31.223	24.28793				
-31.2222	24.28793				
-31.2222	24.28793				
-31.2221	24.28794				
-31.222	24.28796				
-31.222	24.28794				
-31.2221	24.28783				
-31.2222	24.28772				
-31.2223	24.28759				
-31.2224	24.28746				
-31.2225	24.28737				
-31.2225	24.28733				
-31.2225	24.28729				
-31.2226	24.28718				
-31.2226	24.28704				
-31.2227	24.28689				
-31.2227	24.28673				
-31.2227	24.28658				
-31.2227	24.28642				
-31.2227	24.28626				
-31.2227	24.28611				
-31.2227	24.28595				
-31.2226	24.2858				
-31.2226	24.28565				
-31.2225	24.28551				
-31.2224	24.28537				
-31.2223	24.28524				
-31.2222	24.28512				
-31.2222	24.28509				
-31.2224	24.28483				
-31.2227	24.28453				
-31.2231	24.28438				
-31.2234	24.2839				
-31.2236	24.28294				
-31.2238	24.28216				

Ihlahla 1		Ihlahla 2		Ihlahla Hole	
Latitude	Longitude	Latitude	Longitude	Latitude	Longitude
-31.2238	24.28123				
-31.2239	24.28034				
-31.2238	24.27986				
-31.2237	24.27941				
-31.2237	24.2786				
-31.2237	24.27793				
-31.2235	24.27737				
-31.2232	24.27656				
-31.2228	24.27574				
-31.2226	24.27527				
-31.2222	24.27498				
-31.222	24.27498				
-31.2217	24.2751				
-31.2217	24.27541				
-31.2214	24.27618				
-31.2211	24.27785				
-31.2209	24.27846				
-31.2208	24.27955				
-31.2206	24.28102				
-31.2206	24.2817				
-31.2207	24.28261				
-31.2208	24.28321				
-31.2206	24.28388				
-31.2206	24.28433				
-31.2206	24.28442				
-31.2206	24.28442				
-31.2204	24.28444				
-31.2202	24.28447				
-31.2201	24.28452				
-31.2199	24.28457				
-31.2199	24.2846				
-31.2198	24.28464				
-31.2197	24.28471				
-31.2197	24.28471				
-31.2195	24.2848				
-31.2194	24.2849				
-31.2193	24.285				
-31.2192	24.28512				
-31.2191	24.28524				
-31.219	24.28537				
-31.2189	24.28551				

Ihlahla 1		Ihlahla 2		Ihlahla Hole	
Latitude	Longitude	Latitude	Longitude	Latitude	Longitude
-31.2188	24.2858				
-31.2188	24.28595				
-31.2187	24.28611				
-31.2187	24.28626				
-31.2187	24.28642				
-31.2187	24.28658				
-31.2187	24.28673				
-31.2188	24.28684				
-31.218	24.28633				
-31.218	24.28631				
-31.218	24.28624				
-31.2181	24.28616				
-31.2181	24.28609				
-31.2181	24.28601				
-31.2181	24.28593				
-31.2181	24.28585				
-31.2182	24.28576				
-31.2181	24.28535				



Legend

- Ihlahla SEF development envelope centre point
- National road
- Secondary road
- Tertiary road
- Streets
- Non-Perennial river
- Perennial river
- ▭ Ihlahla SEF development area
- ▭ Farm Hongerfontein RE/102
- ▭ Ihlahla SEF development envelope

Centre point of Ihlahla SEF development envelope
 31,230824° S
 24,281573° E

Data Source: Maxar Imagery	
Scale 1:150 000 @A4	
Projection: TM	Datum: HH94
Central Meridian/Zone: Lo 25	
Date: 10/05/2023	Compiled by: BRCH
Project No. 583169	Fig No.



**HANOVER RENEWABLE ENERGY CLUSTER
 IHLAHLA SEF DEVELOPMENT AREA AND ENVELOPE**