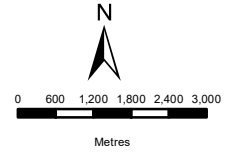


MARALLA WEST
POWERLINE
LOCALITY

Legend

- Provincial Boundary
- Eskom Powerlines
- Powerlines**
- Option 1 (A)
- Option 1 (B)
- Option 2 (A)
- Option 4
- Option A Line
- Option B Line
- Approved Route
- Assessment Corridor
- Substations**
- Authorised Maralla Substation
- Karusa (existing)
- Eskom Komsburg (existing)



DISCLAIMER
The information on this figure was derived from various digital databases available to WSP Environmental (Pty) Ltd. All information is provided "as is" and it must be acknowledged that data, information, and maps are dynamic and in a constant state of maintenance, correction and update. WSP Environmental (Pty) Ltd cannot accept any responsibility for errors, omissions, or positional accuracy where it has not been directly responsible for the production of the data referenced. There are no warranties, expressed or implied, as to the use of this information, including the warranty of merchantability or fitness for a particular purpose. Notification of any errors will be appreciated.



WSP ENVIRONMENTAL (PTY) LTD
WSP HOUSE, 1 ON LANGFORD, LANGFORD ROAD, WESTVILLE 3632
P O BOX 1442, WESTVILLE 3630, RSA
Tel +27 (0)31 240 8860, Fax +27 (0)31 240 8861, wspe@wspgroup.co.za

DATA SOURCE: Service Layer Credits: Source: Esri, Maxar, GeoEye, Earthstar Geographics, CNES/Airbus DS, USDA, USGS, AeroGRID, IGN, and the GIS User Community

COORDINATE SYSTEM: WGS LO21

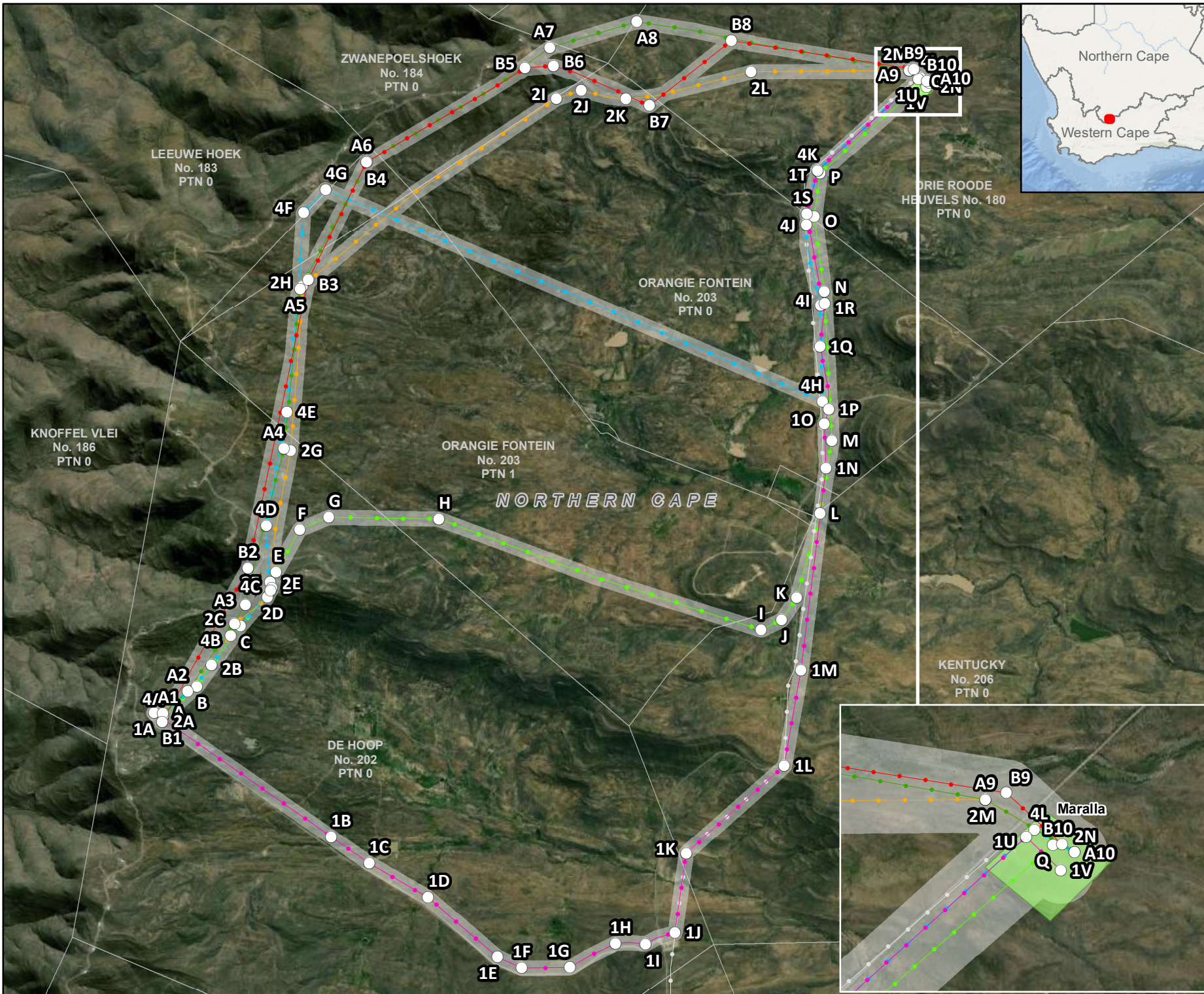
PROJECT TITLE: MARALLA CONSENTS

SCALE: 1:120,000 **DRAWN BY:** TS

DATE: 2/06/2022 **REVIEWED BY:** AS

FIGURE NO: **PROJECT NO:** 41103480 **REV:**

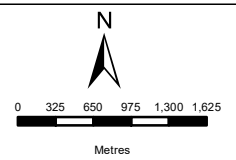
© COPYRIGHT RESERVED
The content of this document is privileged and confidential and may not be disclosed or reproduced without the express authorisation of the author, being "WSP Environmental (Pty) Ltd"



MARALLA WEST
POWERLINE
LOCALITY

Legend

- Provincial Boundary
- Farm Portions (CSG, 2018)
- Powerlines**
- Option 1 (A)
- Option 1 (B)
- Option 2 (A)
- Option 4
- Option A Line
- Option B Line
- Approved Route
- Assessment Corridor
- Turning Points
- Authorised Maralla Substation



DISCLAIMER
The information on this figure was derived from various digital databases available to WSP Environmental (Pty) Ltd. All information is provided "as is" and it must be acknowledged that data, information, and maps are dynamic and in a constant state of maintenance, correction and update. WSP Environmental (Pty) Ltd cannot accept any responsibility for errors, omissions, or positional accuracy where it has not been directly responsible for the production of the data referenced. There are no warranties, expressed or implied, as to the use of this information, including the warranty of merchantability or fitness for a particular purpose. Notification of any errors will be appreciated.



WSP ENVIRONMENTAL (PTY) LTD
WSP HOUSE, 1 ON LANGFORD, LANGFORD ROAD, WESTVILLE 3632
P O BOX 1442, WESTVILLE 3630, RSA
Tel +27 (0)31 240 8860, Fax +27 (0)31 240 8861, wspe@wspgroup.co.za

DATA SOURCE: Credits: Source: Esri, Maxar, GeoEye, Earthstar Geographics, CNES/Airbus DS, USDA, USGS, AeroGRID, IGN, and the GIS User Community

COORDINATE SYSTEM: WGS LO21

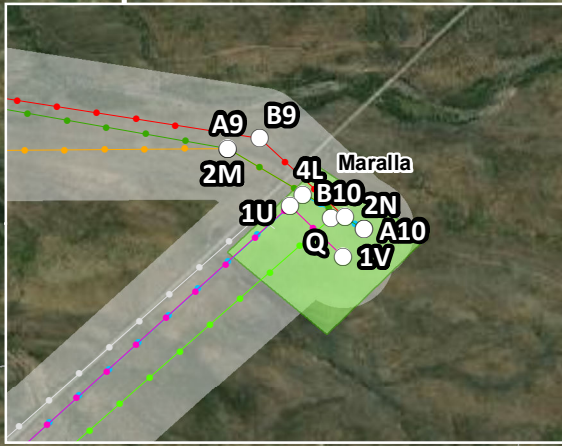
PROJECT TITLE:
MARALLA CONSENTS

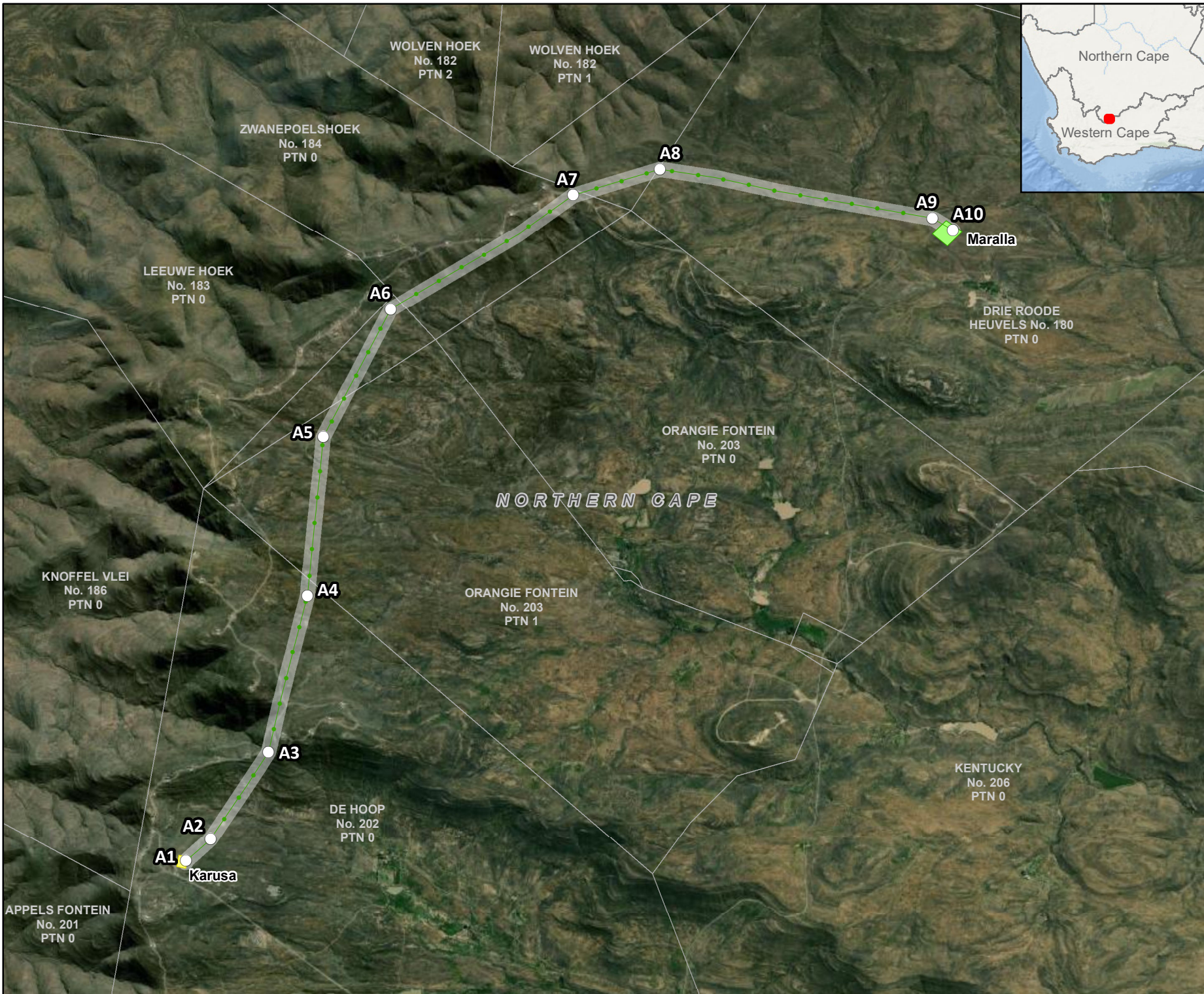
SCALE: 1:85,000 **DRAWN BY:** TS

DATE: 2/06/2022 **REVIEWED BY:** AS

FIGURE NO: **PROJECT NO:** 41103480 **REV:**






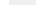

© COPYRIGHT RESERVED
The content of this document is privileged and confidential and may not be disclosed or reproduced without the express authorisation of the author, being "WSP Environmental (Pty) Ltd"

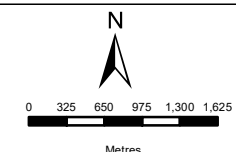




**MARALLA WEST
POWERLINE
PREFERRED OPTION**

Legend

-  Provincial Boundary
-  Farm Portions (CSG, 2018)
-  Option A Line
-  Assessment Corridor
-  Turning Points
-  Authorised Maralla Substation
-  Karusa (existing)



DISCLAIMER
 The information on this figure was derived from various digital databases available to WSP Environmental (Pty) Ltd. All information is provided "as is" and it must be acknowledged that data, information, and maps are dynamic and in a constant state of maintenance, correction and update. WSP Environmental (Pty) Ltd cannot accept any responsibility for errors, omissions, or positional accuracies where it has not been directly responsible for the production of the data referenced. There are no warranties, expressed or implied, as to the use of this information, including the warranty of merchantability or fitness for a particular purpose. Notification of any errors will be appreciated.



WSP ENVIRONMENTAL (PTY) LTD
 WSP HOUSE, 1 ON LANGFORD, LANGFORD ROAD, WESTVILLE 3632
 P O BOX 1442, WESTVILLE 3630, RSA
 Tel +27 (0)31 240 8860, Fax +27 (0)31 240 8861, wspe@wspgroup.co.za

DATA SOURCE:
 Service Layer Credits: Source: Esri, Maxar, GeoEye, Earthstar Geographics, CNES/Airbus DS, USDA, USGS, AeroGRID, IGN, and the GIS User Community

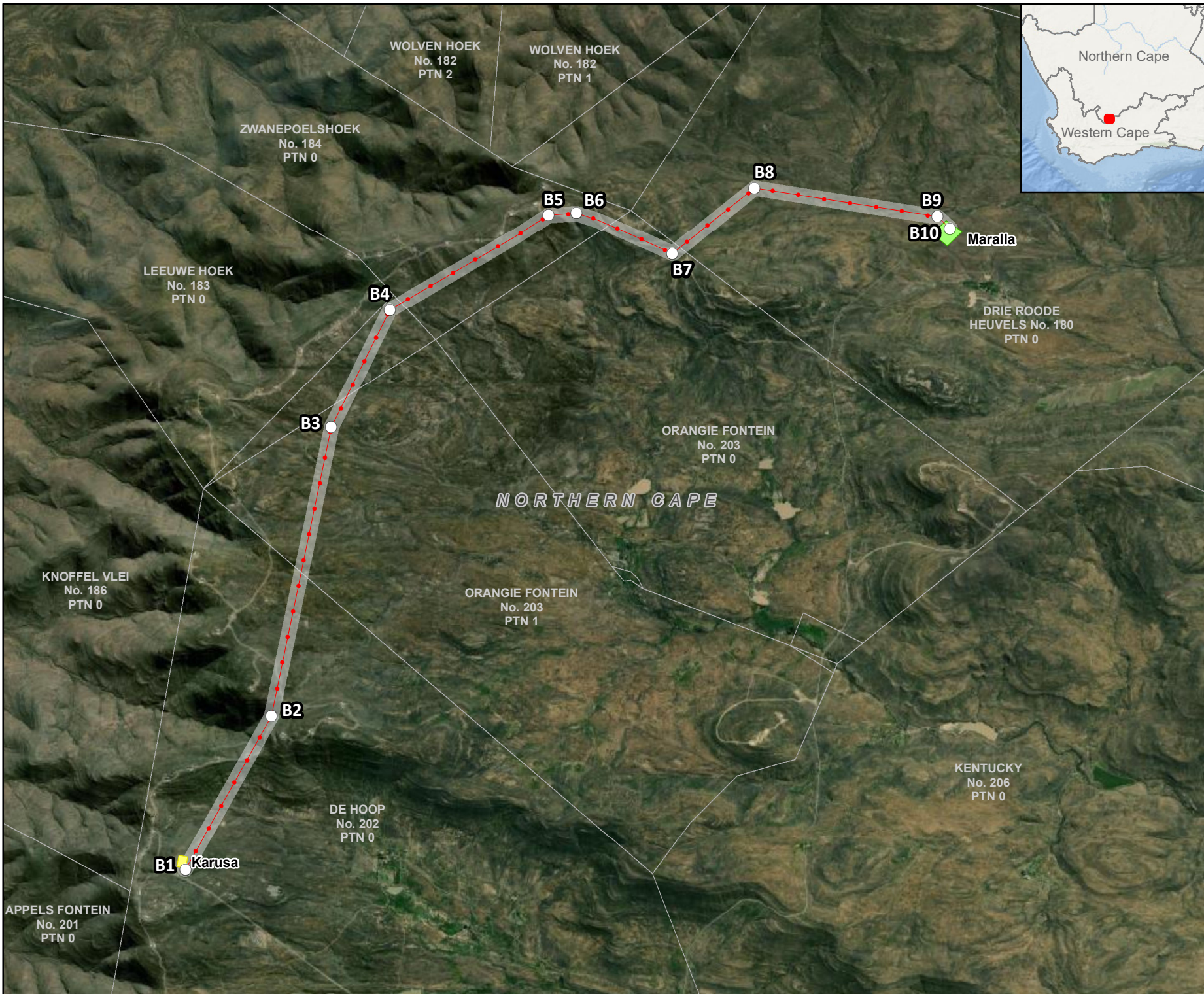
COORDINATE SYSTEM: WGS LO21

PROJECT TITLE:
 MARALLA CONSENTS

SCALE: 1:85,000	DRAWN BY: TS
DATE: 2/06/2022	REVIEWED BY: AS

FIGURE NO:	PROJECT NO: 41103480	REV:
-------------------	-----------------------------	-------------

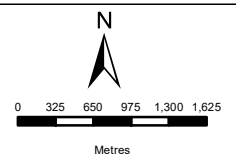
© COPYRIGHT RESERVED
 The content of this document is privileged and confidential and may not be disclosed or reproduced without the express authorisation of the author, being "WSP Environmental (Pty) Ltd"



**MARALLA WEST
POWERLINE
PREFERRED OPTION**

Legend

- Provincial Boundary
- Farm Portions (CSG, 2018)
- Option B Line
- Assessment Corridor
- Turning Points
- Authorised Maralla Substation
- Karusa (existing)



DISCLAIMER
 The information on this figure was derived from various digital databases available to WSP Environmental (Pty) Ltd. All information is provided "as is" and it must be acknowledged that data, information, and maps are dynamic and in a constant state of maintenance, correction and update. WSP Environmental (Pty) Ltd cannot accept any responsibility for errors, omissions, or positional accuracies where it has not been directly responsible for the production of the data referenced. There are no warranties, expressed or implied, as to the use of this information, including the warranty of merchantability or fitness for a particular purpose. Notification of any errors will be appreciated.



WSP ENVIRONMENTAL (PTY) LTD
 WSP HOUSE, 1 ON LANGFORD, LANGFORD ROAD, WESTVILLE 3632
 P O BOX 1442, WESTVILLE 3630, RSA
 Tel +27 (0)31 240 8860, Fax +27 (0)31 240 8861, wspe@wspgroup.co.za

DATA SOURCE:
 Service Layer Credits: Source: Esri, Maxar, GeoEye, Earthstar
 Geographics, CNES/Airbus DS, USDA, USGS, AeroGRID, IGN,
 and the GIS User Community

COORDINATE SYSTEM: WGS LO21

PROJECT TITLE:
 MARALLA CONSENTS

SCALE: 1:85,000	DRAWN BY: TS
DATE: 2/06/2022	REVIEWED BY: AS

FIGURE NO:	PROJECT NO: 41103480	REV:
-------------------	-----------------------------	-------------

© COPYRIGHT RESERVED
 The content of this document is privileged and confidential and may not be disclosed or reproduced without the express authorisation of the author, being "WSP Environmental (Pty) Ltd"