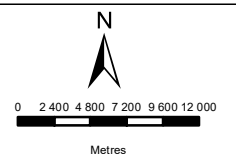


# REDCAP MURA

LOCALITY

## Legend

- District Road
- Existing Roads
- Access Roads
- Mura EGI Corridor
- Mura Solar 1
- Mura Solar 2
- Mura Solar 3
- Mura Solar 4
- Provincial Boundary
- Eskom Powerlines
- Farm Boundaries



**DISCLAIMER**  
 The information on this figure was derived from various digital databases available to WSP Environmental (Pty) Ltd. All information is provided "as is" and it must be acknowledged that data, information, and maps are dynamic and in a constant state of maintenance, correction and update. WSP Environmental (Pty) Ltd cannot accept any responsibility for errors, omissions, or positional accuracy where it has not been directly responsible for the production of the data referenced. There are no warranties, expressed or implied, as to the use of this information, including the warranty of merchantability or fitness for a particular purpose. Notification of any errors will be appreciated.



**WSP ENVIRONMENTAL (PTY) LTD**  
 WSP HOUSE, 1 ON LANGFORD, LANGFORD ROAD, WESTVILLE 3632  
 P.O. BOX 1442, WESTVILLE 3630, RSA  
 Tel +27 (0)31 240 8860, Fax +27 (0)31 240 8861, wspe@wspgroup.co.za

**DATA SOURCE:**  
 Service Layer Credits: Sources: Esri, HERE, Garmin, USGS, Intermap, INCREMENT P, NRCan, Esri Japan, METI, Esri China (Hong Kong), Esri Korea, Esri (Thailand), NGCC, (c)

**COORDINATE SYSTEM:** HARTEBEESTHOEK94 LO23


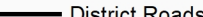
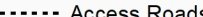
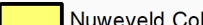
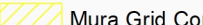
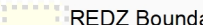
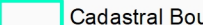
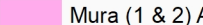
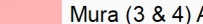
**PROJECT TITLE:**  
 REDCAP NUWEVELD PV CLUSTER

**SCALE:** 1:500 000      **DRAWN BY:** TS

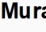
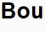


**DATE:** 2023/02/02      **REVIEWED BY:** MG

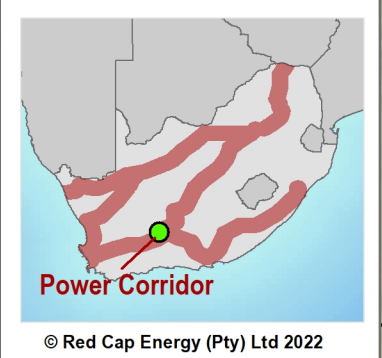
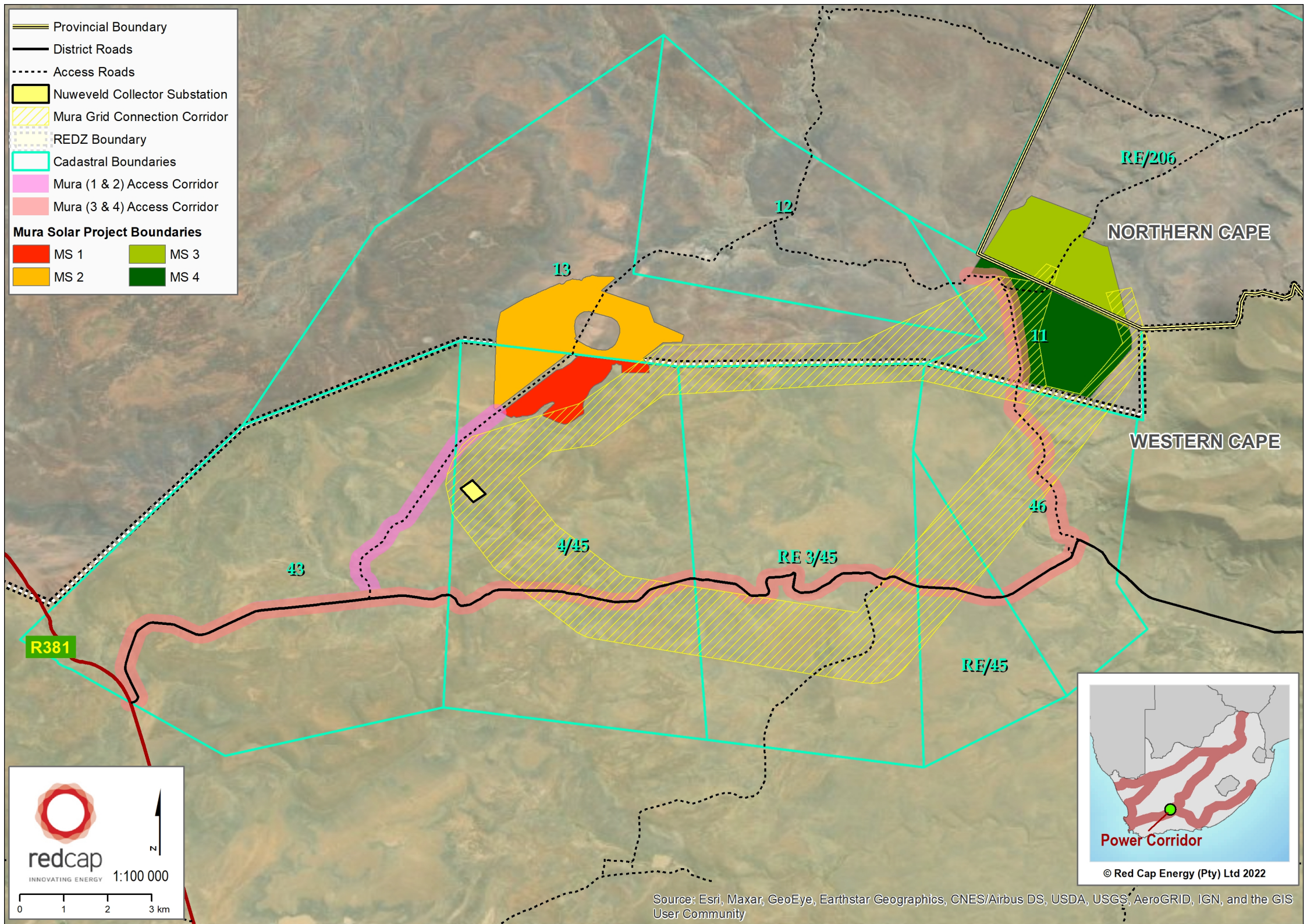
**FIGURE NO:**      **PROJECT NO:** 41103930      **REV:**

**© COPYRIGHT RESERVED**  
 The content of this document is privileged and confidential and may not be disclosed or reproduced without the express authorisation of the author, being "WSP Environmental (Pty) Ltd"


-  Provincial Boundary
-  District Roads
-  Access Roads
-  Nuweveld Collector Substation
-  Mura Grid Connection Corridor
-  REDZ Boundary
-  Cadastral Boundaries
-  Mura (1 & 2) Access Corridor
-  Mura (3 & 4) Access Corridor

**Mura Solar Project Boundaries**

 MS 1	 MS 3
 MS 2	 MS 4

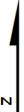
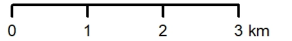


© Red Cap Energy (Pty) Ltd 2022

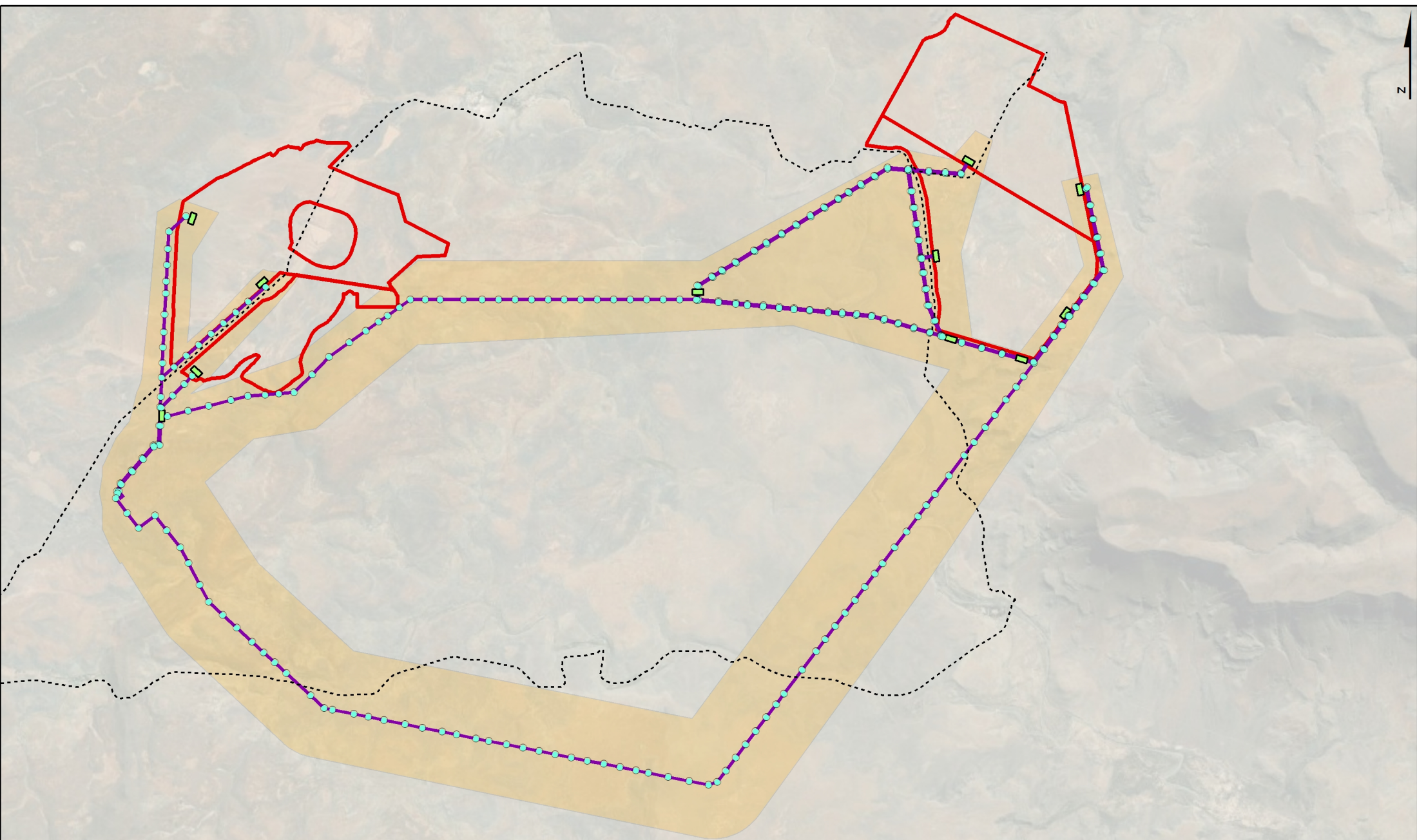


**redcap**  
INNOVATING ENERGY

1:100 000

Source: Esri, Maxar, GeoEye, Earthstar Geographics, CNES/Airbus DS, USDA, USGS, AeroGRID, IGN, and the GIS User Community



T: +27 (0) 21 790 1392  
 E: info@red-cap.co.za

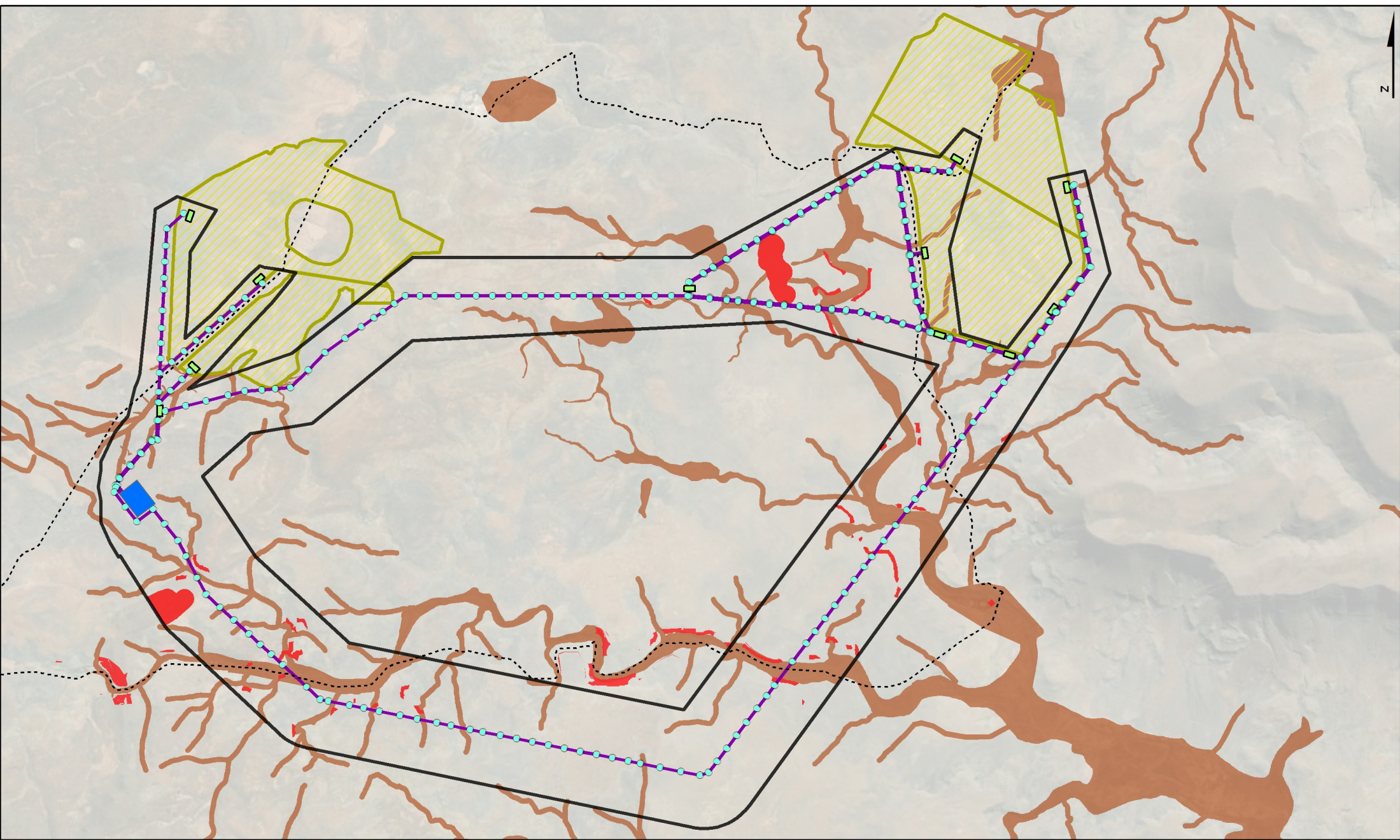
Copyright © 2023 Red Cap Energy

## Mura EGI Corridor

1:65 000

*The data provided in this representation are provided for informational and planning purposes only.  
 Red Cap is not responsible for the misuse or misrepresentation of the data.*

- Existing Access Road
- EGI Corridor
- Mura Site Boundaries (assessed separately)
- Preliminary Pylon Positions
- Preliminary Grid Alignment
- Switching Stations





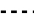







**redcap**  
INNOVATING ENERGY  
T: +27 (0) 21 790 1392  
E: info@red-cap.co.za  
Copyright © 2023 Red Cap Energy

## Mura EGI Corridor & Nogo

1:65 000

*The data provided in this representation are provided for informational and planning purposes only. Red Cap is not responsible for the misuse or misrepresentation of the data.*

-  Preliminary Pylon Positions
-  Preliminary Grid Alignment
-  Switching Stations
-  Collector Substation (approved)
-  Existing Access Road
-  Mura Site Boundaries (assessed separately)
-  EGI Corridor
-  OHL Nogo
-  Pylons, OHL & Access Road Nogo