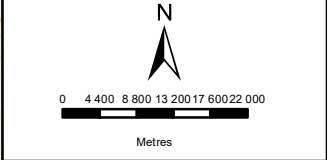


ESIZAYO EXPANSION

LOCALITY

Legend

- ▭ Esizayo Expansion
- ▭ Esizayo Authorised
- Eskom Powerlines



DISCLAIMER
 The information on this figure was derived from various digital databases available to WSP Environmental (Pty) Ltd. All information is provided "as is" and it must be acknowledged that data, information, and maps are dynamic and in a constant state of maintenance, correction and update. WSP Environmental (Pty) Ltd cannot accept any responsibility for errors, omissions, or positional accuracy where it has not been directly responsible for the production of the data referenced. There are no warranties, expressed or implied, as to the use of this information, including the warranty of merchantability or fitness for a particular purpose. Notification of any errors will be appreciated.



WSP ENVIRONMENTAL (PTY) LTD
 BUILDING C, KNIGHTSBRIDGE,
 33 SLOANE STREET, BRAYTON,
 P O BOX 98867, SLOANE PARK 2152, RSA
 Tel +27 (0)11 361 1360, Fax +27 (0)11 361 1361, wsp@wspgroup.co.za

DATA SOURCE:
 Service Layer Credits: Sources: Esri, HERE, Garmin, USGS, Intermap, INCREMENT P, NRCan, Esri Japan, METI, Esri China (Hong Kong), Esri Korea, Esri (Thailand), NGCC, (c)

COORDINATE SYSTEM: WGS LO21

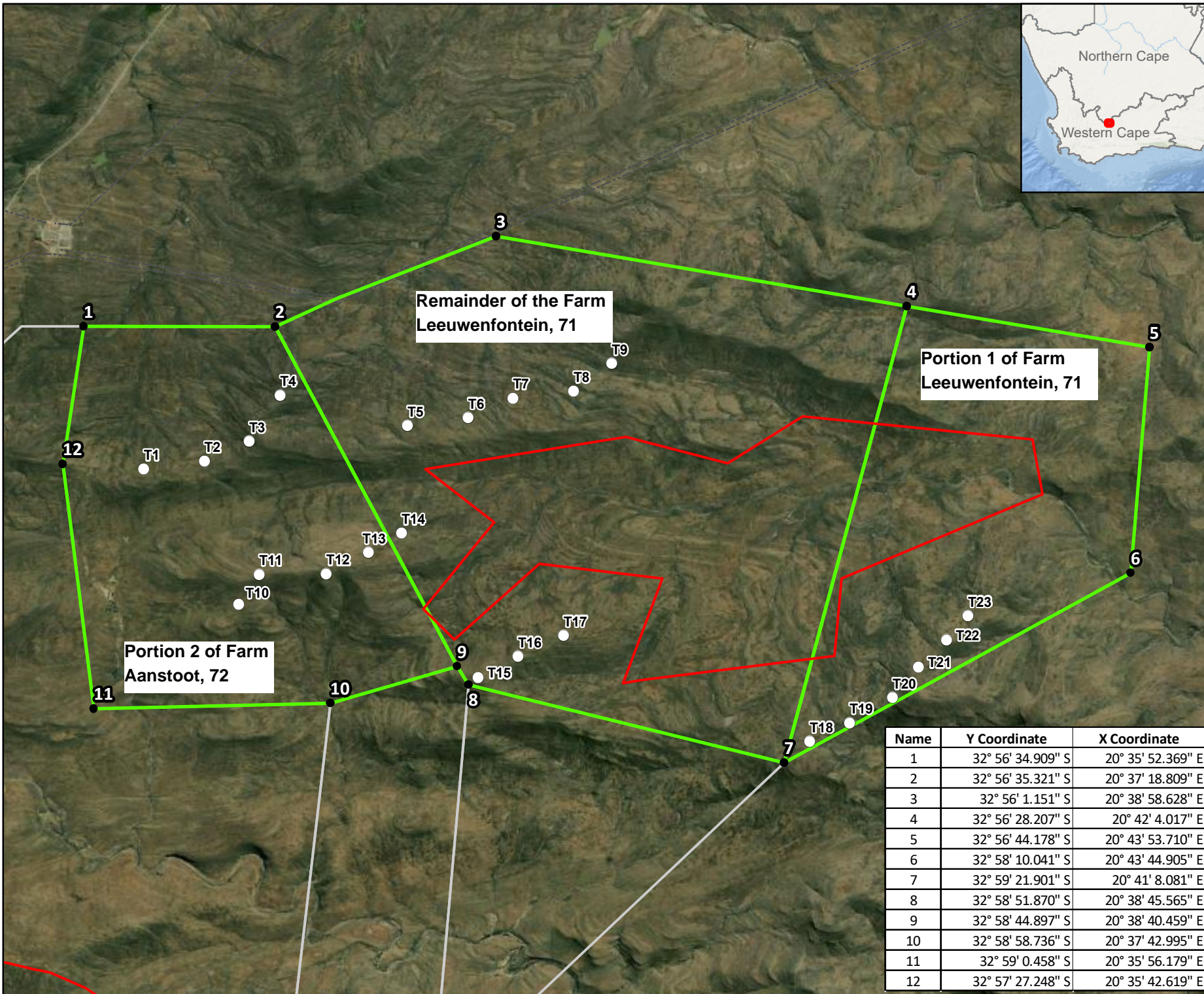
PROJECT TITLE:
 ESIZAYO WEF BAR

SCALE: 1:900 000 **DRAWN BY:** TS

DATE: 2022/04/08 **REVIEWED BY:** AS

FIGURE NO: **PROJECT NO:** 41103063 **REV:**

© COPYRIGHT RESERVED
 The content of this document is privileged and confidential and may not be disclosed or reproduced without the express authorisation of the author, being "WSP Environmental (Pty) Ltd"



ESIZAYO EXPANSION

LOCALITY

Legend

- Property Corners
- Turbines
- ▭ Exclusion Area
- ▭ Esizayo Expansion
- ▭ Esizayo Authorised
- Eskom Powerlines

N

0 290 580 870 1 160 1 450

Metres

DISCLAIMER

The information on this figure was derived from various digital databases available to WSP Environmental (Pty) Ltd. All information is provided "as is" and it must be acknowledged that data, information, and maps are dynamic and in a constant state of maintenance, correction and update. WSP Environmental (Pty) Ltd cannot accept any responsibility for errors, omissions, or positional accuracy where it has not been directly responsible for the production of the data referenced. There are no warranties, expressed or implied, as to the use of this information, including the warranty of merchantability or fitness for a particular purpose. Notification of any errors will be appreciated.

wsp

WSP ENVIRONMENTAL (PTY) LTD
 BUILDING C, KNIGHTSBERGE,
 33 SLOANE STREET, BRANKWYN,
 P O BOX 98867, SLOANE PARK 2152, RSA
 Tel +27 (0)11 361 1360, Fax +27 (0)11 361 1361, wsp@wspgroup.co.za

DATA SOURCE: Service Layer Credits: Source: Esri, Maxar, GeoEye, Earthstar
 Geographics, CNES/Airbus DS, USDA, USGS, AeroGRID, IGN,
 and the GIS User Community

COORDINATE SYSTEM: WGS LO21

PROJECT TITLE:
 ESIZAYO WEF BAR

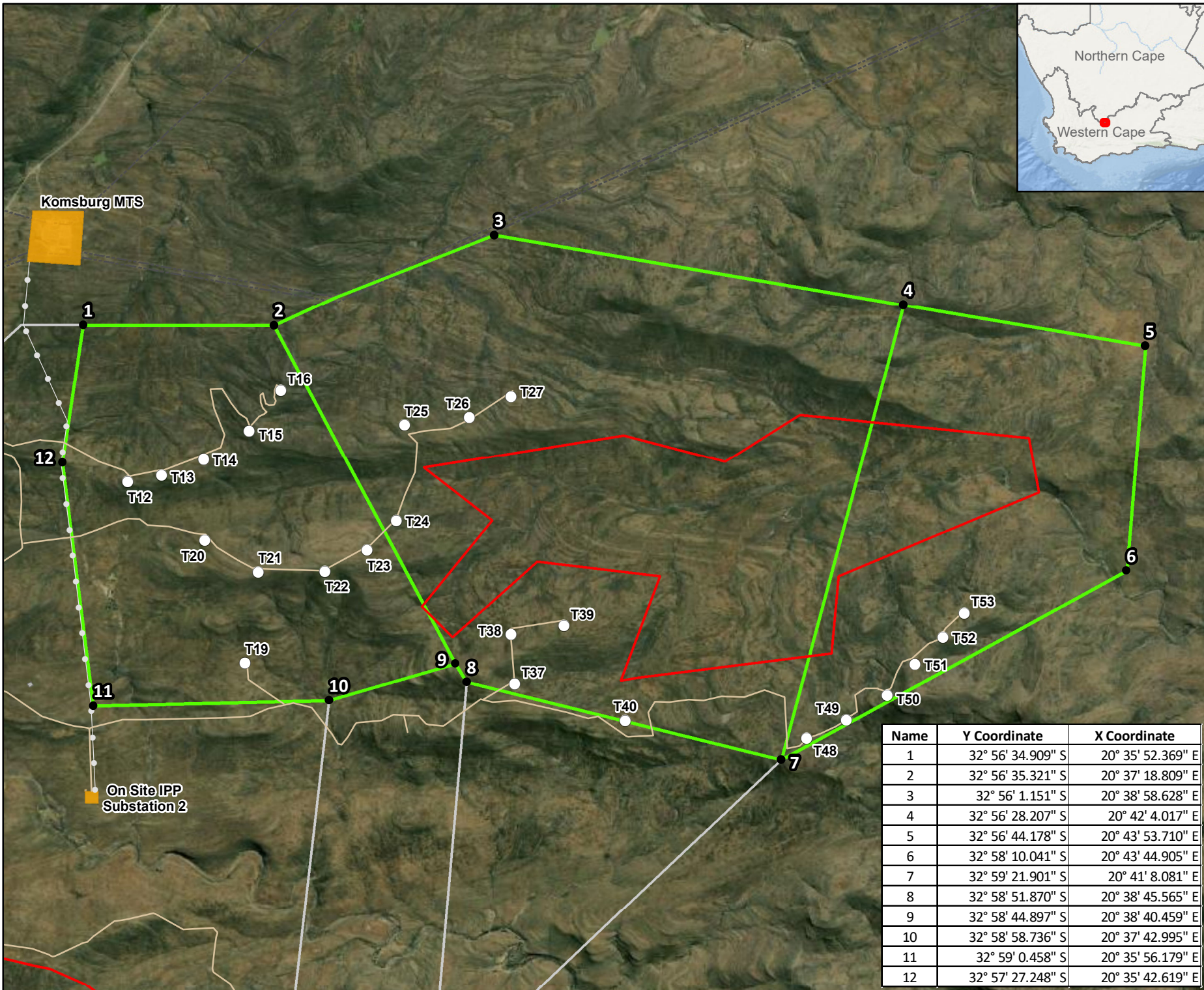
SCALE: 1:58 000 DRAWN BY: TS

DATE: 2022/04/11 REVIEWED BY: AS

FIGURE NO: PROJECT NO: 41103063 REV:

© COPYRIGHT RESERVED
 The content of this document is privileged and confidential and may not be disclosed
 or reproduced without the express authorisation of the author, being "WSP
 Environmental (Pty) Ltd"

Name	Y Coordinate	X Coordinate
1	32° 56' 34.909" S	20° 35' 52.369" E
2	32° 56' 35.321" S	20° 37' 18.809" E
3	32° 56' 1.151" S	20° 38' 58.628" E
4	32° 56' 28.207" S	20° 42' 4.017" E
5	32° 56' 44.178" S	20° 43' 53.710" E
6	32° 58' 10.041" S	20° 43' 44.905" E
7	32° 59' 21.901" S	20° 41' 8.081" E
8	32° 58' 51.870" S	20° 38' 45.565" E
9	32° 58' 44.897" S	20° 38' 40.459" E
10	32° 58' 58.736" S	20° 37' 42.995" E
11	32° 59' 0.458" S	20° 35' 56.179" E
12	32° 57' 27.248" S	20° 35' 42.619" E

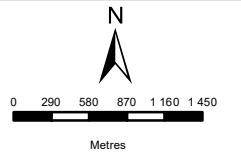


ESIZAYO EXPANSION

LOCALITY

Legend

- Property Corners
- Turbines
- Proposed Road
- Powerline
- O&M Buildings
- Potential Cement Batching Plant
- Substation
- Exclusion Area
- ▭ Esizayo Expansion
- ▭ Esizayo Authorised
- - Eskom Powerlines



DISCLAIMER
 The information on this figure was derived from various digital databases available to WSP Environmental (Pty) Ltd. All information is provided "as is" and it must be acknowledged that data, information, and maps are dynamic and in a constant state of maintenance, correction and update. WSP Environmental (Pty) Ltd cannot accept any responsibility for errors, omissions, or positional accuracy where it has not been directly responsible for the production of the data referenced. There are no warranties, expressed or implied, as to the use of this information, including the warranty of merchantability or fitness for a particular purpose. Notification of any errors will be appreciated.



WSP ENVIRONMENTAL (PTY) LTD
 BUILDING C, KNIGHTSBRIDGE,
 33 SLOANE STREET, BROWATON,
 P O BOX 98867, SLOANE PARK 2152, RSA
 Tel +27 (0)11 361 1360, Fax +27 (0)11 361 1361, wsp@wspgroup.co.za

DATA SOURCE:
 Service Layer Credits: Source: Esri, Maxar, GeoEye, Earthstar
 Geographics, CNES/Airbus DS, USDA, USGS, AeroGRID, IGN,
 and the GIS User Community

COORDINATE SYSTEM: WGS LO21

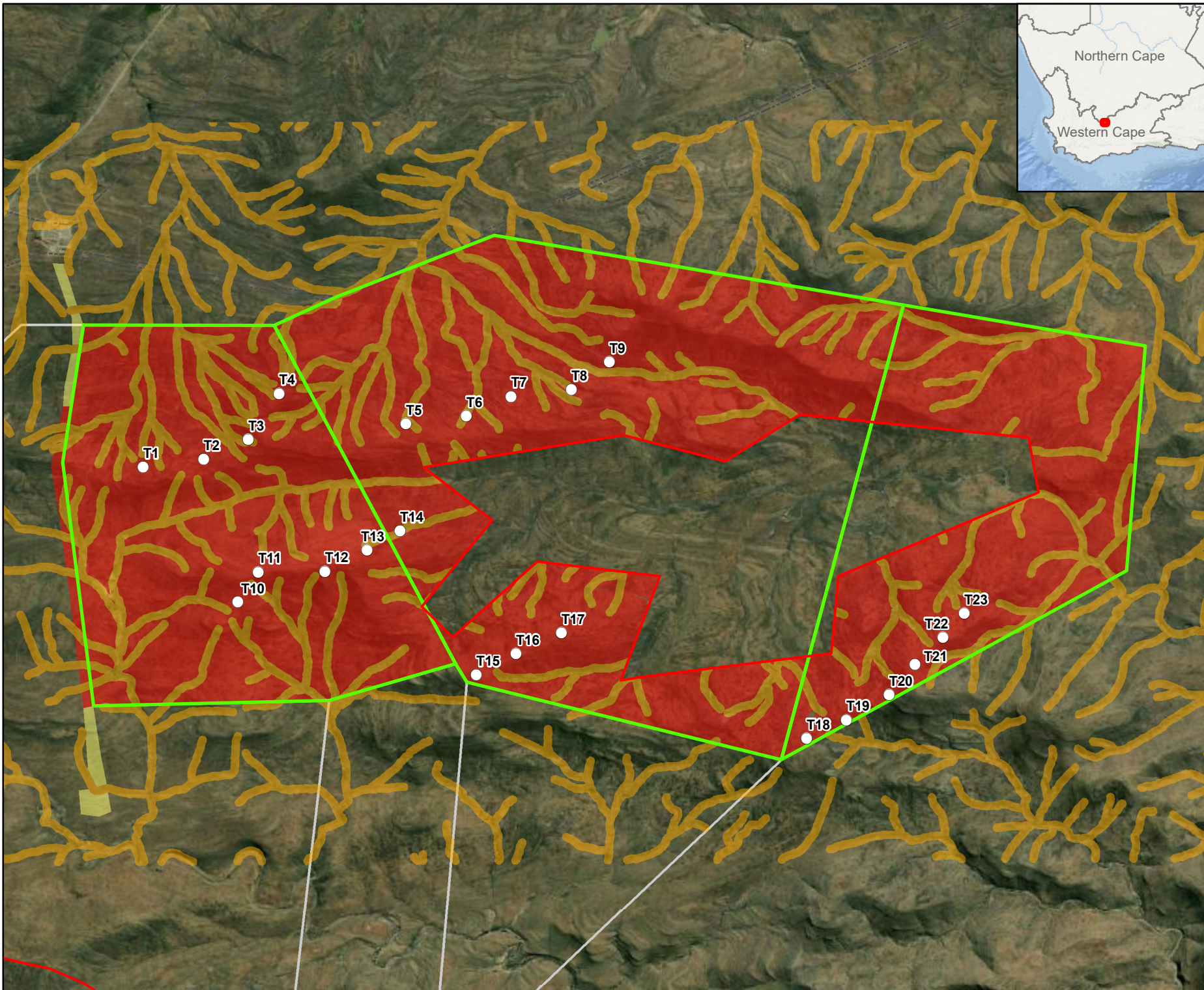
PROJECT TITLE:
 ESIZAYO WEF BAR

SCALE: 1:58 000 DRAWN BY: TS
 DATE: 2022/04/28 REVIEWED BY: AS

FIGURE NO: PROJECT NO: 41103063 REV:

© COPYRIGHT RESERVED
 The content of this document is privileged and confidential and may not be disclosed or reproduced without the express authorisation of the author, being WSP Environmental (Pty) Ltd

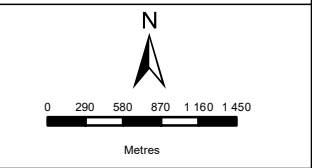
Name	Y Coordinate	X Coordinate
1	32° 56' 34.909" S	20° 35' 52.369" E
2	32° 56' 35.321" S	20° 37' 18.809" E
3	32° 56' 1.151" S	20° 38' 58.628" E
4	32° 56' 28.207" S	20° 42' 4.017" E
5	32° 56' 44.178" S	20° 43' 53.710" E
6	32° 58' 10.041" S	20° 43' 44.905" E
7	32° 59' 21.901" S	20° 41' 8.081" E
8	32° 58' 51.870" S	20° 38' 45.565" E
9	32° 58' 44.897" S	20° 38' 40.459" E
10	32° 58' 58.736" S	20° 37' 42.995" E
11	32° 59' 0.458" S	20° 35' 56.179" E
12	32° 57' 27.248" S	20° 35' 42.619" E



ESIZAYO EXPANSION

SENSITIVITIES

- Legend**
- Turbines
 - ▭ Exclusion Area
 - ▭ Esizayo Expansion
 - ▭ Esizayo Authorised
 - Eskom Powerlines
- Ecological Importance**
- ▭ Medium
 - ▭ High
 - ▭ Very High



DISCLAIMER

The information on this figure was derived from various digital databases available to WSP Environmental (Pty) Ltd. All information is provided "as is" and it must be acknowledged that data, information, and maps are dynamic and in a constant state of maintenance, correction and update. WSP Environmental (Pty) Ltd cannot accept any responsibility for errors, omissions, or positional accuracy where it has not been directly responsible for the production of the data referenced. There are no warranties, expressed or implied, as to the use of this information, including the warranty of merchantability or fitness for a particular purpose. Notification of any errors will be appreciated.

WSP ENVIRONMENTAL (PTY) LTD
 BUILDING C, KNIGHTSBRIDGE,
 33 SLOANE STREET, BROWNSTON,
 P O BOX 98867, SLOANE PARK 2152, RSA
 Tel +27 (0)11 581 1361, Fax +27 (0)11 581 1381, wsp@wspgroup.co.za

DATA SOURCE: Service Layer Credits: Source: Esri, Maxar, GeoEye, Earthstar Geographics, CNES/Airbus DS, USDA, USGS, AeroGRID, IGN, and the GIS User Community

COORDINATE SYSTEM: HARTEBEESTHOEK94 LO21

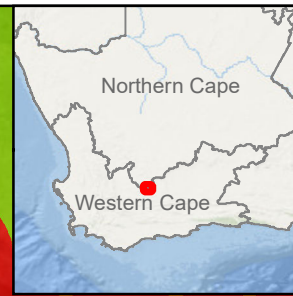
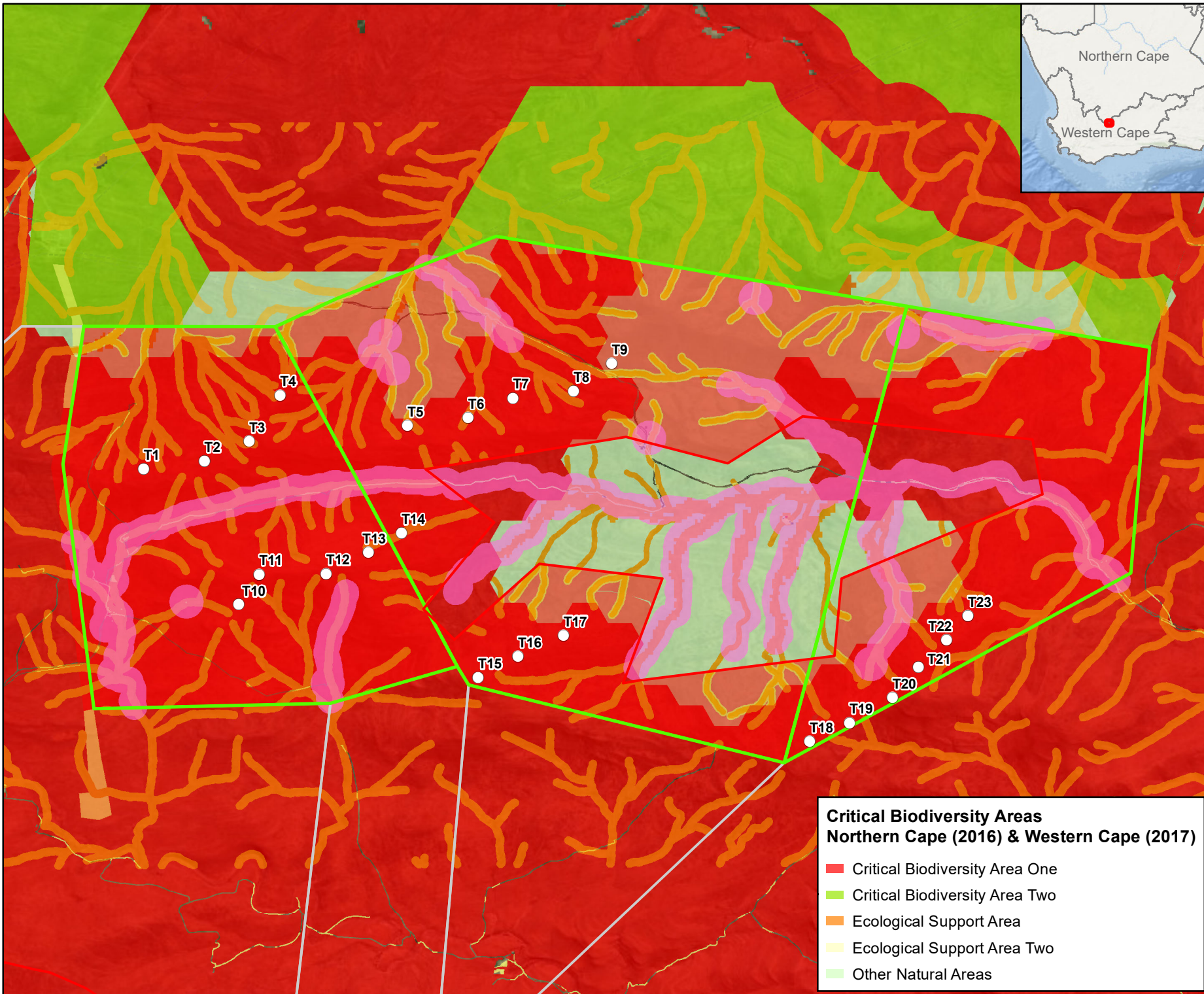
PROJECT TITLE:
ESIZAYO WEF BAR

SCALE: 1:58 000 **DRAWN BY:** TS

DATE: 2022/04/11 **REVIEWED BY:** AS

FIGURE NO: **PROJECT NO:** 41103063 **REV:**

© COPYRIGHT RESERVED
 The content of this document is privileged and confidential and may not be disclosed or reproduced without the express authorisation of the author, being "WSP Environmental (Pty) Ltd"



ESIZAYO EXPANSION

SENSITIVITIES

Legend

- Turbines
- ▭ Exclusion Area
- ▭ Esizayo Expansion
- ▭ Esizayo Authorised
- ▭ Avifauna Sensitivity
- Ecological Importance**
- ▭ Medium
- ▭ High
- ▭ Very High
- Eskom Powerlines

DISCLAIMER
 The information on this figure was derived from various digital databases available to WSP Environmental (Pty) Ltd. All information is provided "as is" and it must be acknowledged that data, information, and maps are dynamic and in a constant state of maintenance, correction and update. WSP Environmental (Pty) Ltd cannot accept any responsibility for errors, omissions, or positional accuracy where it has not been directly responsible for the production of the data referenced. There are no warranties, expressed or implied, as to the use of this information, including the warranty of merchantability or fitness for a particular purpose. Notification of any errors will be appreciated.

wsp

WSP ENVIRONMENTAL (PTY) LTD
 BUILDING C, KNIGHTSBRIDGE,
 33 SLOANE STREET, BRANKWYN,
 P O BOX 98867, SLOANE PARK 2152, RSA
 Tel +27 (0)11 561 1360, Fax +27 (0)11 561 1361, wsp@wspgroup.co.za

DATA SOURCE:
 Service Layer Credits: Source: Esri, Maxar, GeoEye, Earthstar
 Geographics, CNES/Airbus DS, USDA, USGS, AeroGRID, IGN,
 and the GIS User Community

COORDINATE SYSTEM: HARTBEESTHOCKE94 LO21

PROJECT TITLE:
 ESIZAYO WEF BAR

SCALE: 1:58 000 **DRAWN BY:** TS

DATE: 2022/04/22 **REVIEWED BY:** AS

FIGURE NO: **PROJECT NO:** 41103063 **REV:**

© COPYRIGHT RESERVED
 The content of this document is privileged and confidential and may not be disclosed or reproduced without the express authorisation of the author, being "WSP Environmental (Pty) Ltd"

**Critical Biodiversity Areas
 Northern Cape (2016) & Western Cape (2017)**

- ▭ Critical Biodiversity Area One
- ▭ Critical Biodiversity Area Two
- ▭ Ecological Support Area
- ▭ Ecological Support Area Two
- ▭ Other Natural Areas