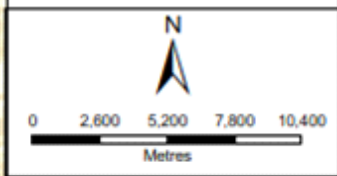


KARREEBOSCH WIND FARM (RF) (PTY) LTD
GRID LOCALITY



- Legend**
- Substation Alternatives**
- Option 1
 - Option 2
- Existing Substations**
- Bon Espirange
 - Komsberg
- Powerline Alternatives**
- 1A - Preferred
 - 1B
 - 1C
 - 2A
 - 2B
 - 2C
 - 3 - Preferred
 - Bon Espirange to Komsberg - Preferred
 - Powerline Assessment Corridors



DISCLAIMER

The information on this figure was derived from various digital databases available to WSP Environmental (Pty) Ltd. All information is provided "as is" and it must be acknowledged that such information and maps are dynamic and to a constant state of maintenance, correction and update. WSP Environmental (Pty) Ltd cannot accept any responsibility for errors, omissions or positional accuracy where it has not been directly responsible for the production of the data information. There are no warranties, expressed or implied, as to the use of this information, including the accuracy of measurements or times for a particular purpose. Notification of any errors will be appreciated.



WSP ENVIRONMENTAL (PTY) LTD
 BUILDING C, WINDYBROOKSIDE,
 25 BLOOM STREET, BLOEMSBURG,
 P O BOX 9867, BLOEMSBURG, 9301, RSA.
 Tel: +27 (0) 51 901 1361, Fax: +27 (0) 51 901 1361, www.wspenv.com.za

DATA SOURCE: SERVICE LAYER CREDITS: ESRI, GARMAN, GEB CO, NOAA, NGDC, AND OTHER CONTRIBUTORS
SOURCES: ESRI, HERE, GARMAN, USGS, INTERMAP, INCREMENT P, NRCAN, ESRI JAPAN, METI, ESRI CHINA

PROJECTION: KarreeboschRF4_L21	
PROJECT TITLE: KARREEBOSCH WEF Part 2 & BAR	
SCALE: 1:200,000	DRAWN BY: TS
DATE: 11/08/2022	REVIEWED BY: AS
FIGURE NO:	PROJECT NO: 41103843 REV:

© COPYRIGHT RESERVED
 The content of this document is protected and confidential and may not be disclosed or reproduced without the express authorization of the author being "WSP Environmental (Pty) Ltd"

PROPOSED CONSTRUCTION OF THE KARREBOSCH 132kV POWER LINE

132 kV Power Line Alternatives

- Option 1A
- Option 1B
- Option 1C
- Option 2A
- Option 2B
- Option 2C
- Route 3
- Bon Espirange to Komsberg

Legend

- Provincial Boundaries
- Property Boundaries
- Provincial Road
- Power Line Assessment Corridor

Eskom Infrastructure

- Komsberg SS
- Bon Espirange SS

Proposed Electrical Infrastructure

- Substation Option 1
- Substation Option 2

Scale: 1:80,000
 0 0.7 1.4 2.1 2.8 km

Date: 29-6-2022 Project: KBosch

Coordinate System: WG 21

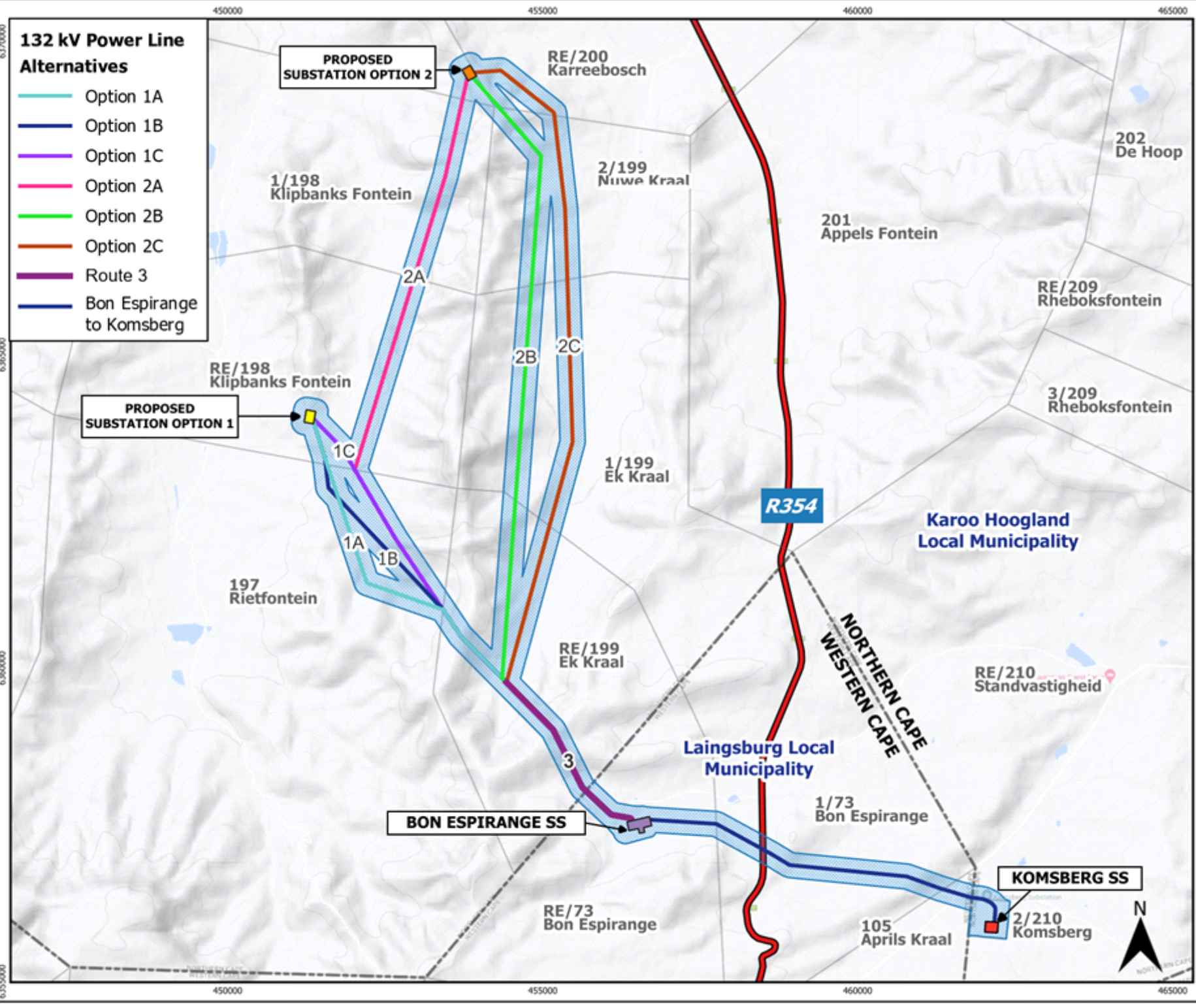
Drawn: CS

Approved: CC

GM001.1 Revision: 4

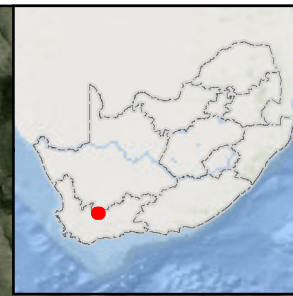


© G7 Renewable Energies Pty Ltd
 125 Buitengracht Street
 Cape Town 8001
 Tel: 021 3000 610
 Email: info@g7energies.com
 Internet: www.g7energies.com



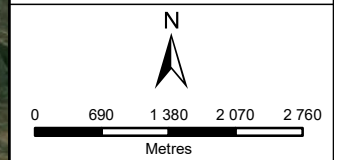
KARREEBOSCH WIND FARM (RF) (PTY) LTD

GRID SENSITIVITY



Legend

- Substation Alternatives
 - Existing Substations
 - Powerline Alternatives
 - Heritage Locations
 - Avifauna Sensitivity
 - Visual Proximity To Receptors
- ### Ecological Sensitivity
- High
 - Moderate
 - Very Low
- ### Freshwater Sensitivity
- River System
 - 32 m Zone of Regulation (NEMA)
 - GN509 Zone of Regulation



DISCLAIMER
 The information on this figure was derived from various digital databases available to WSP Environmental (Pty) Ltd. All information is provided "as is" and it must be acknowledged that data, information, and maps are dynamic and in a constant state of maintenance, correction and update. WSP Environmental (Pty) Ltd cannot accept any responsibility for errors, omissions, or positional accuracy where it has not been directly responsible for the production of the data referenced. There are no warranties, expressed or implied, as to the use of this information, including the warranty of merchantability or fitness for a particular purpose. Notification of any errors will be appreciated.



WSP ENVIRONMENTAL (PTY) LTD
 BUILDING C, KNIGHTSBRIDGE
 33 SLOANE STREET, BRYANSTON
 P O BOX 98867, SLOANE PARK 2152, RSA
 Tel +27 (0)11 361 1360, Fax +27 (0)11 361 1381, wsp@wspgroup.co.za

DATA SOURCE:
 SERVICE LAYER CREDITS: SOURCE: ESRI, MAXAR, EARTHSTAR GEOGRAPHICS, AND THE GIS USER COMMUNITY
 ESRI, GARMIN, GEBCO, NOAA NGDC, AND OTHER

PROJECTION: Hartebeesthoek94 Lo21

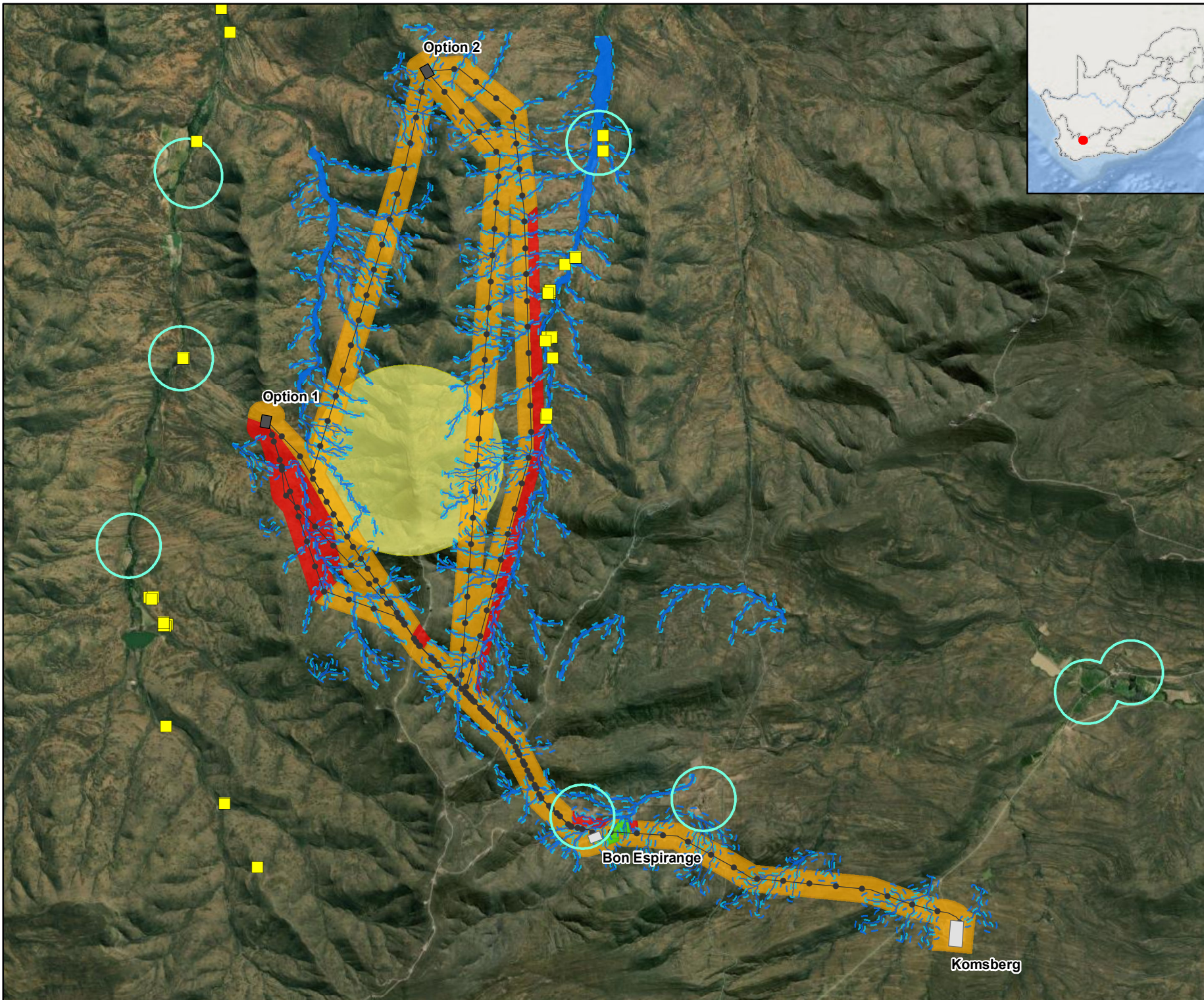
PROJECT TITLE:
 KARREEBOSCH WEF Part 2 & BAR

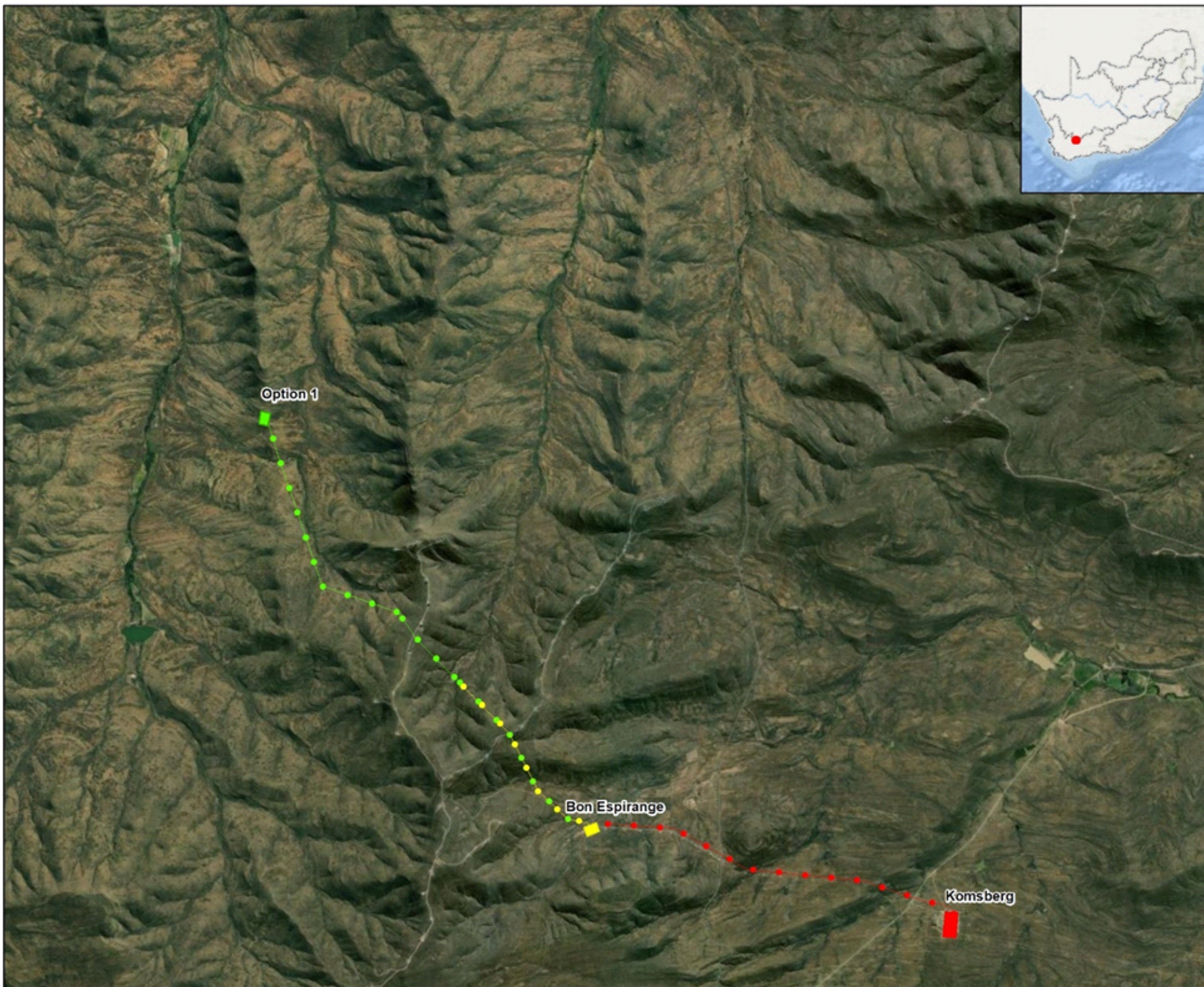
SCALE: 1:78 000 **DRAWN BY:** TS

DATE: 2022/08/22 **REVIEWED BY:** AS

FIGURE NO: **PROJECT NO:** 41103843 **REV:**

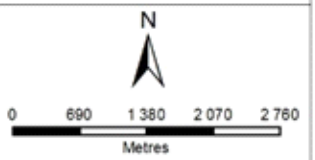
© COPYRIGHT RESERVED
 The content of this document is privileged and confidential and may not be disclosed or reproduced without the express authorisation of the author, being "WSP Environmental (Pty) Ltd"





KARREEBOSCH WIND FARM (RF) (PTY) LTD
 GRID
 PREFERRED ALTERNATIVES

- Legend**
- Substation Alternatives**
- Option 1
- Existing Substations**
- Bon Espirance
 - Komsberg
- Powerline Alternatives**
- 1A - Preferred
 - 3 - Preferred
 - Bon Espirance to Komsberg - Preferred



DISCLAIMER

The information on this figure was derived from various digital databases available to WSP Environmental (Pty) Ltd. All information is provided "as is" and it must be acknowledged that data, information, and a map are subject to error in a substantial sense of magnitude, location and content. WSP Environmental (Pty) Ltd cannot accept any responsibility for errors, omissions, or inaccuracies that may have occurred or be expected in the production of the data presented. There are no warranties expressed or implied as to the use of this information, including the accuracy of any results or fitness for a particular purpose. Notification of any errors will be appreciated.



DATA SOURCE: SERVICE LINES, CREDITS, SOURCE: ESRI, MAYAR, BARTHSTAR, GEOGRAPHICS, AND THE GIS USER COMMUNITY
 ESRI, GARM, GEBCO, NOAA/NGDC, AND OTHER
PROJECTION: Martensden24 Lat21

PROJECT TITLE: KARREEBOSCH WEF Part 2 & BAR		
SCALE: 1:75 000	DRAWN BY: TS	
DATE: 2022/08/05	REVIEWED BY: AS	
FIGURE NO.:	PROJECT NO.: 41103843	REV:

© COPYRIGHT RESERVED
 The content of this document is protected and confidential and is not to be disclosed or reproduced without the express authorisation of the author, being WSP Environmental (Pty) Ltd.