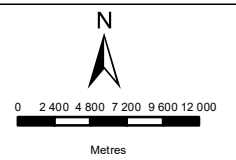


# REDCAP MURA

LOCALITY

## Legend

- District Road
- Existing Roads
- Access Roads
- Mura EGI Corridor
- Mura Solar 1
- Mura Solar 2
- Mura Solar 3
- Mura Solar 4
- Provincial Boundary
- Eskom Powerlines
- Farm Boundaries



**DISCLAIMER**  
 The information on this figure was derived from various digital databases available to WSP Environmental (Pty) Ltd. All information is provided "as is" and it must be acknowledged that data, information, and maps are dynamic and in a constant state of maintenance, correction and update. WSP Environmental (Pty) Ltd cannot accept any responsibility for errors, omissions, or positional accuracy where it has not been directly responsible for the production of the data referenced. There are no warranties, expressed or implied, as to the use of this information, including the warranty of merchantability or fitness for a particular purpose. Notification of any errors will be appreciated.



**WSP ENVIRONMENTAL (PTY) LTD**  
 WSP HOUSE, 1 ON LANGFORD, LANGFORD ROAD, WESTVILLE 3632  
 P.O. BOX 1442, WESTVILLE 3630, RSA  
 Tel +27 (0)31 240 8860, Fax +27 (0)31 240 8861, wspe@wspgroup.co.za

**DATA SOURCE:** Service Layer Credits; Sources: Esri, HERE, Garmin, USGS, Intermap, INCREMENT P, NRCan, Esri Japan, METI, Esri China (Hong Kong), Esri Korea, Esri (Thailand), NGCC, (c)

**COORDINATE SYSTEM:** HARTEBEESTHOEK94 LO23

**PROJECT TITLE:**  
 REDCAP NUWEVELD PV CLUSTER


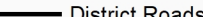
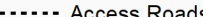
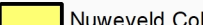
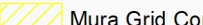
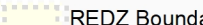
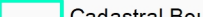


**SCALE:** 1:500 000      **DRAWN BY:** TS

**DATE:** 2023/02/02      **REVIEWED BY:** MG


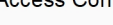
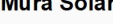
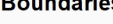
**FIGURE NO:**      **PROJECT NO:** 41103930      **REV:**

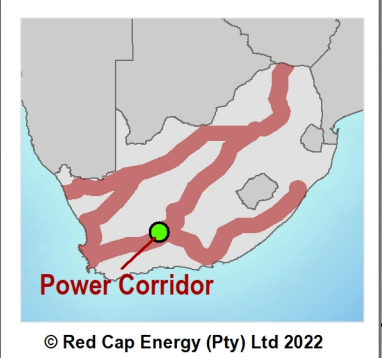
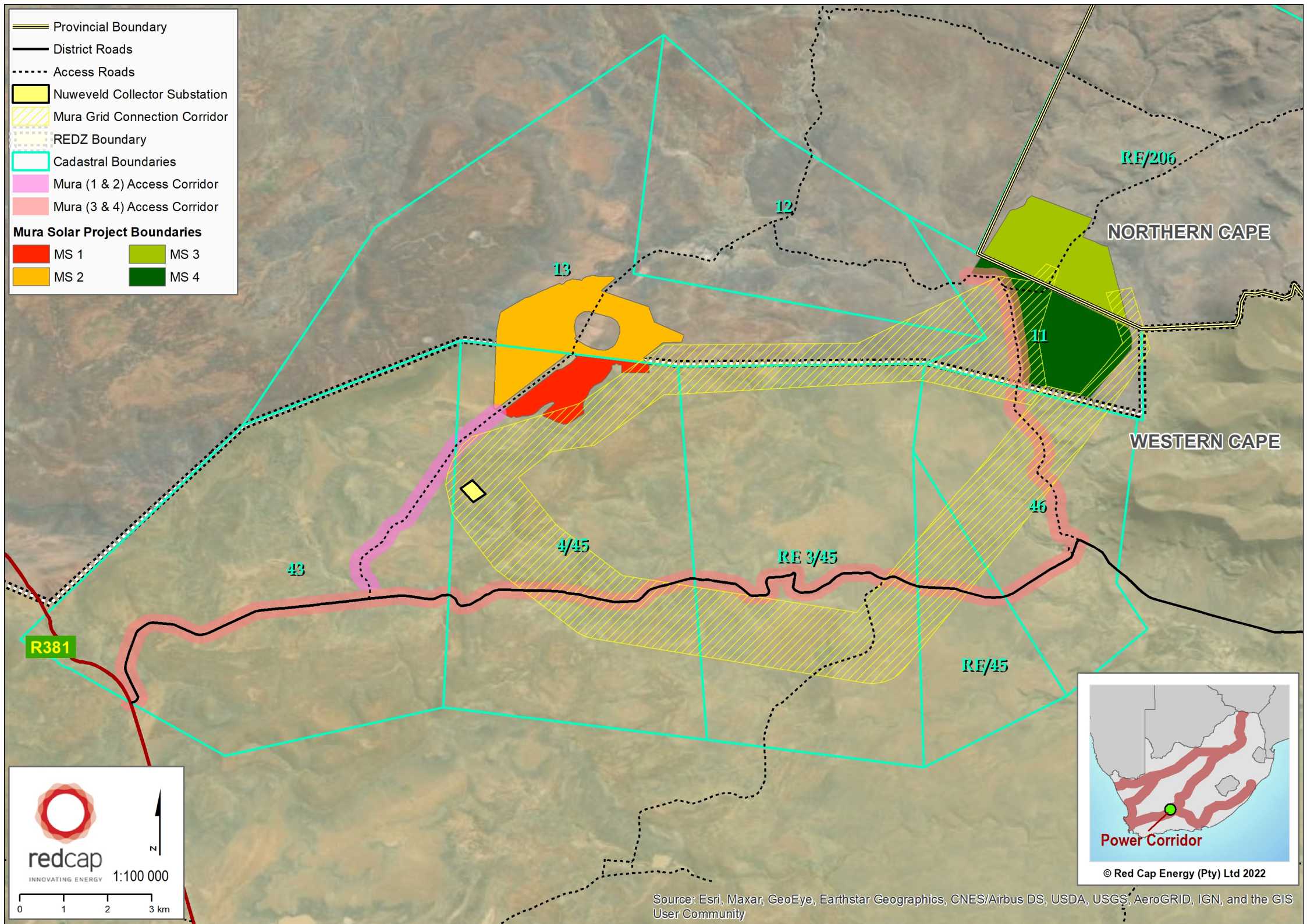
**© COPYRIGHT RESERVED**  
 The content of this document is privileged and confidential and may not be disclosed or reproduced without the express authorisation of the author, being "WSP Environmental (Pty) Ltd"




-  Provincial Boundary
-  District Roads
-  Access Roads
-  Nuweveld Collector Substation
-  Mura Grid Connection Corridor
-  REDZ Boundary
-  Cadastral Boundaries
-  Mura (1 & 2) Access Corridor
-  Mura (3 & 4) Access Corridor

**Mura Solar Project Boundaries**

 MS 1	 MS 3
 MS 2	 MS 4


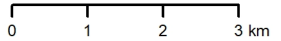


© Red Cap Energy (Pty) Ltd 2022



redcap  
INNOVATING ENERGY

1:100 000

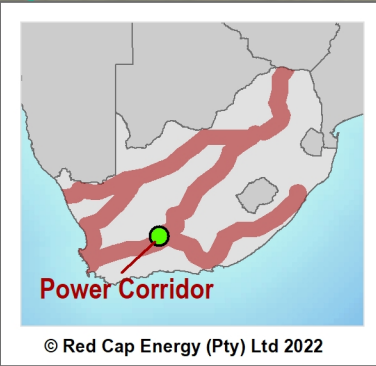
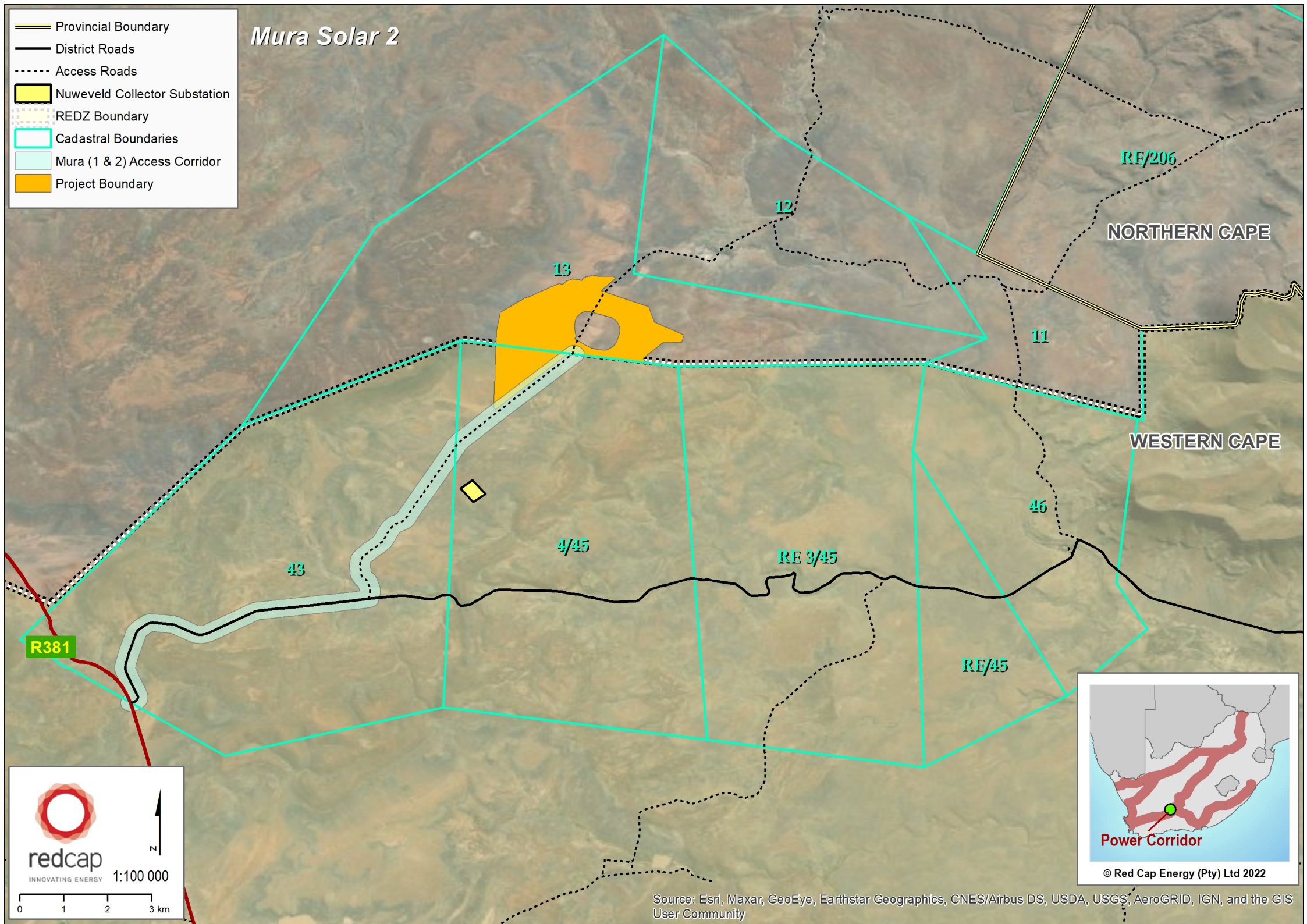



Source: Esri, Maxar, GeoEye, Earthstar Geographics, CNES/Airbus DS, USDA, USGS, AeroGRID, IGN, and the GIS User Community



# Mura Solar 2

- Provincial Boundary
- District Roads
- Access Roads
- Nuweveld Collector Substation
- REDZ Boundary
- Cadastral Boundaries
- Mura (1 & 2) Access Corridor
- Project Boundary

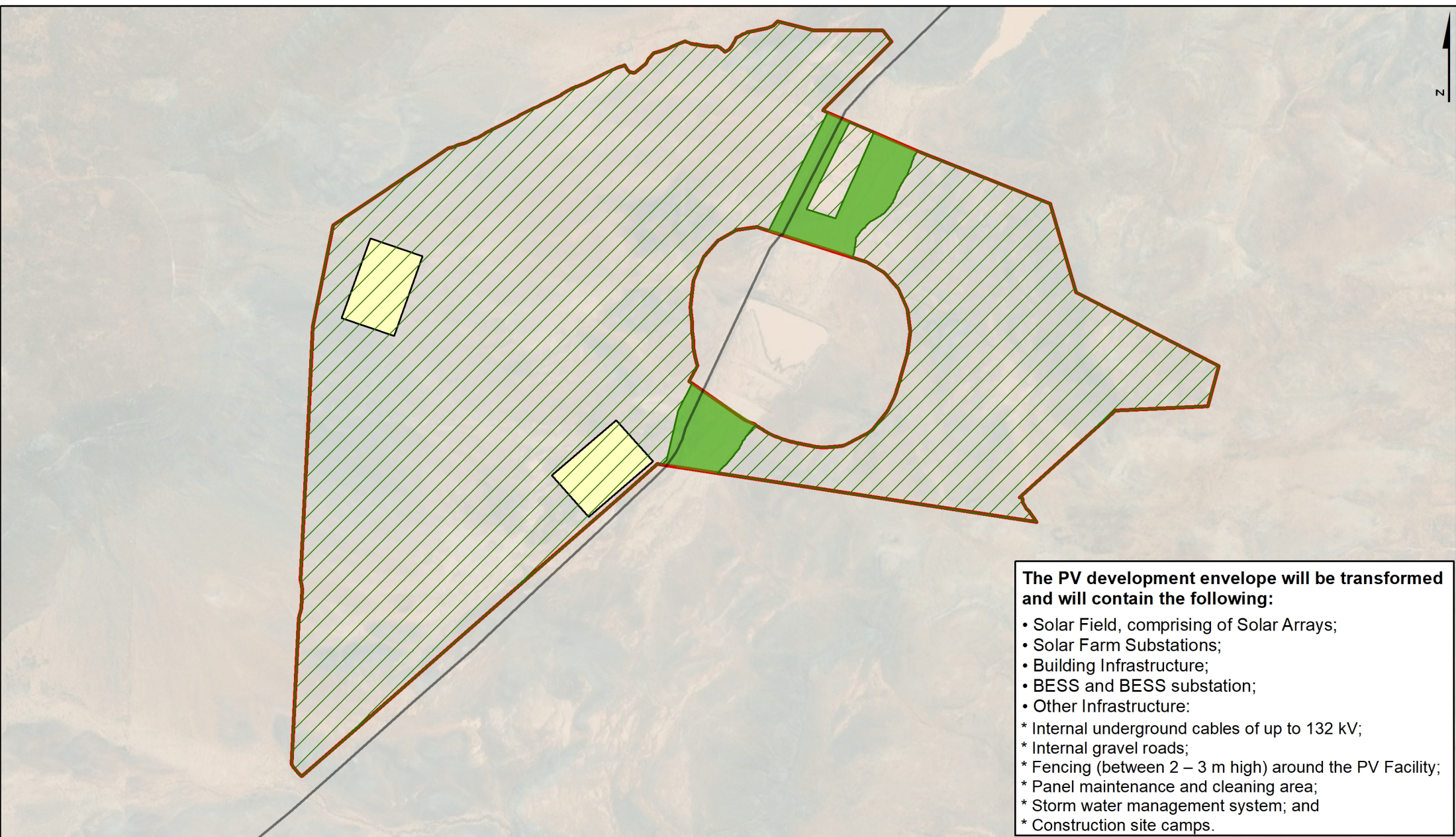


© Red Cap Energy (Pty) Ltd 2022

redcap  
INNOVATING ENERGY  
1:100 000  
0 1 2 3 km

Source: Esri, Maxar, GeoEye, Earthstar Geographics, CNES/Airbus DS, USDA, USGS, AeroGRID, IGN, and the GIS User Community





**The PV development envelope will be transformed and will contain the following:**

- Solar Field, comprising of Solar Arrays;
- Solar Farm Substations;
- Building Infrastructure;
- BESS and BESS substation;
- Other Infrastructure:
- \* Internal underground cables of up to 132 kV;
- \* Internal gravel roads;
- \* Fencing (between 2 – 3 m high) around the PV Facility;
- \* Panel maintenance and cleaning area;
- \* Storm water management system; and
- \* Construction site camps.




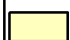



T: +27 (0) 21 790 1392  
E: info@red-cap.co.za  
Copyright © 2022 Red Cap Energy

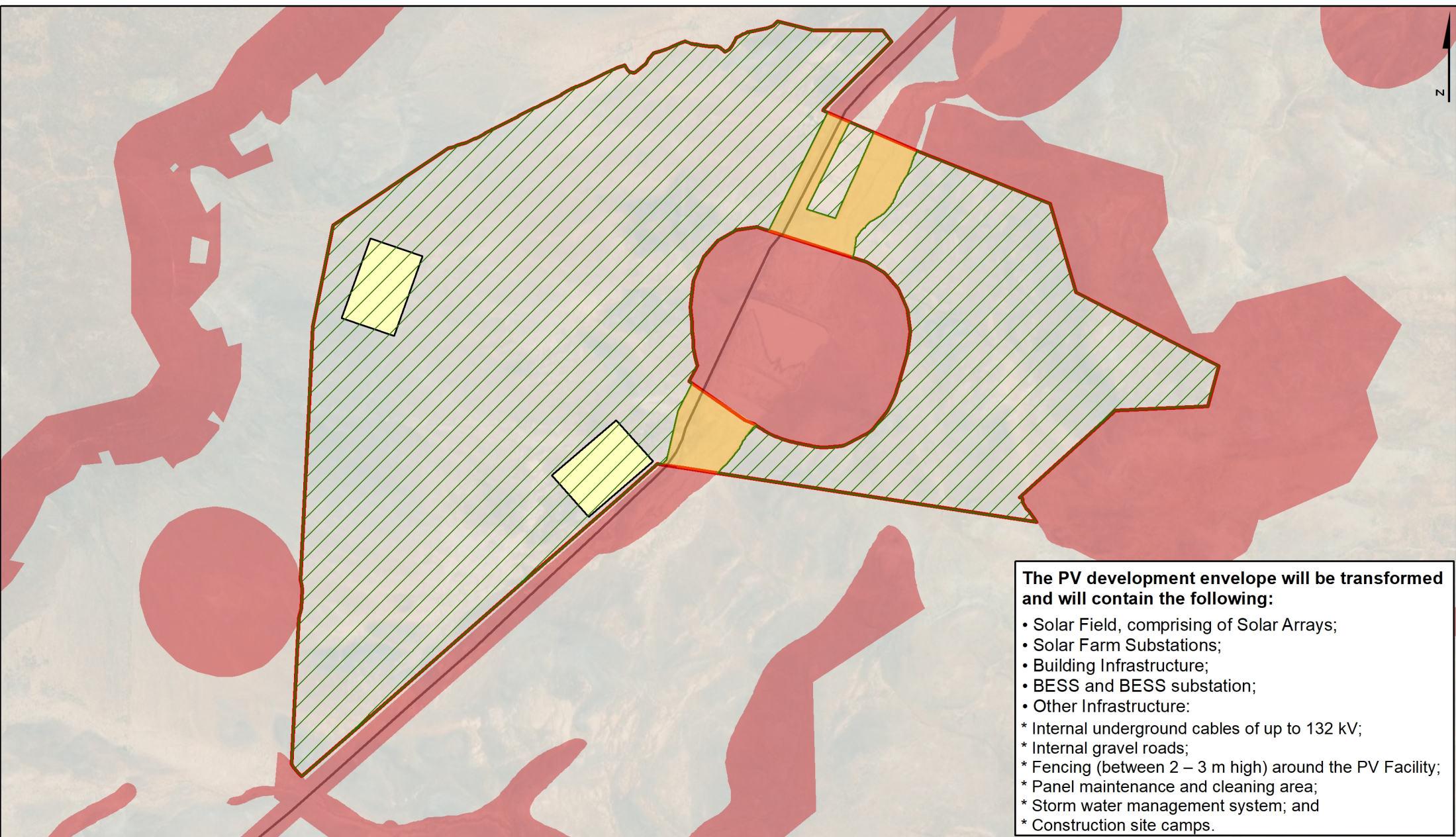
## Mura 2 PV Layout Schematic

1:20 000

*The data provided in this representation are provided for informational and planning purposes only. Red Cap is not responsible for the misuse or misrepresentation of the data.*

-  Existing Access Road
-  PV Development Envelope
-  Development Envelope only for underground cables and new access tracks
-  Preliminary areas for substations, switching stations (assessed separately) and BESS
-  Site Boundary





**The PV development envelope will be transformed and will contain the following:**





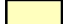

- Solar Field, comprising of Solar Arrays;
- Solar Farm Substations;
- Building Infrastructure;
- BESS and BESS substation;
- Other Infrastructure:
- \* Internal underground cables of up to 132 kV;
- \* Internal gravel roads;
- \* Fencing (between 2 – 3 m high) around the PV Facility;
- \* Panel maintenance and cleaning area;
- \* Storm water management system; and
- \* Construction site camps.



T: +27 (0) 21 790 1392  
E: info@red-cap.co.za  
Copyright © 2022 Red Cap Energy

Mura 2  
PV Sensitivity & Layout Schematic  
1:20 000

*The data provided in this representation are provided for informational and planning purposes only. Red Cap is not responsible for the misuse or misrepresentation of the data.*

-  PV Nogo
-  PV Nogo (with exception for underground cables and new access tracks)
-  Existing Access Road
-  PV Development Envelope
-  Preliminary areas for substations, switching stations (assessed separately) and BESS
-  Site Boundary