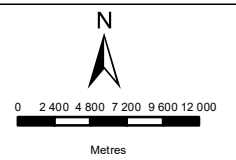


REDCAP MURA

LOCALITY

Legend

- District Road
- Existing Roads
- Access Roads
- Mura EGI Corridor
- Mura Solar 1
- Mura Solar 2
- Mura Solar 3
- Mura Solar 4
- Provincial Boundary
- Eskom Powerlines
- Farm Boundaries



DISCLAIMER
 The information on this figure was derived from various digital databases available to WSP Environmental (Pty) Ltd. All information is provided "as is" and it must be acknowledged that data, information, and maps are dynamic and in a constant state of maintenance, correction and update. WSP Environmental (Pty) Ltd cannot accept any responsibility for errors, omissions, or positional accuracy where it has not been directly responsible for the production of the data referenced. There are no warranties, expressed or implied, as to the use of this information, including the warranty of merchantability or fitness for a particular purpose. Notification of any errors will be appreciated.



WSP ENVIRONMENTAL (PTY) LTD
 WSP HOUSE, 1 ON LANGFORD, LANGFORD ROAD, WESTVILLE 3632
 P.O. BOX 1442, WESTVILLE 3630, RSA
 Tel +27 (0)31 240 8860, Fax +27 (0)31 240 8861, wspe@wspgroup.co.za

DATA SOURCE: Service Layer Credits; Sources: Esri, HERE, Garmin, USGS, Intermap, INCREMENT P, NRCan, Esri Japan, METI, Esri China (Hong Kong), Esri Korea, Esri (Thailand), NGCC, (c)

COORDINATE SYSTEM: HARTEBEESTHOEK94 LO23


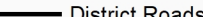
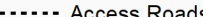
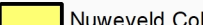
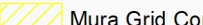
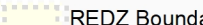
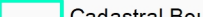


PROJECT TITLE:
 REDCAP NUWEVELD PV CLUSTER

SCALE: 1:500 000 **DRAWN BY:** TS


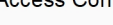
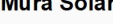
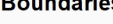
DATE: 2023/02/02 **REVIEWED BY:** MG

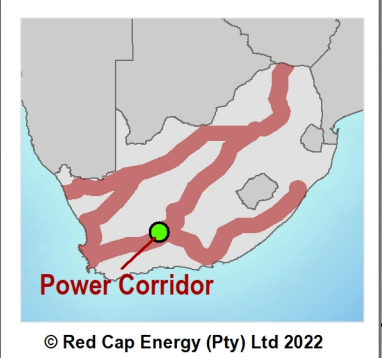
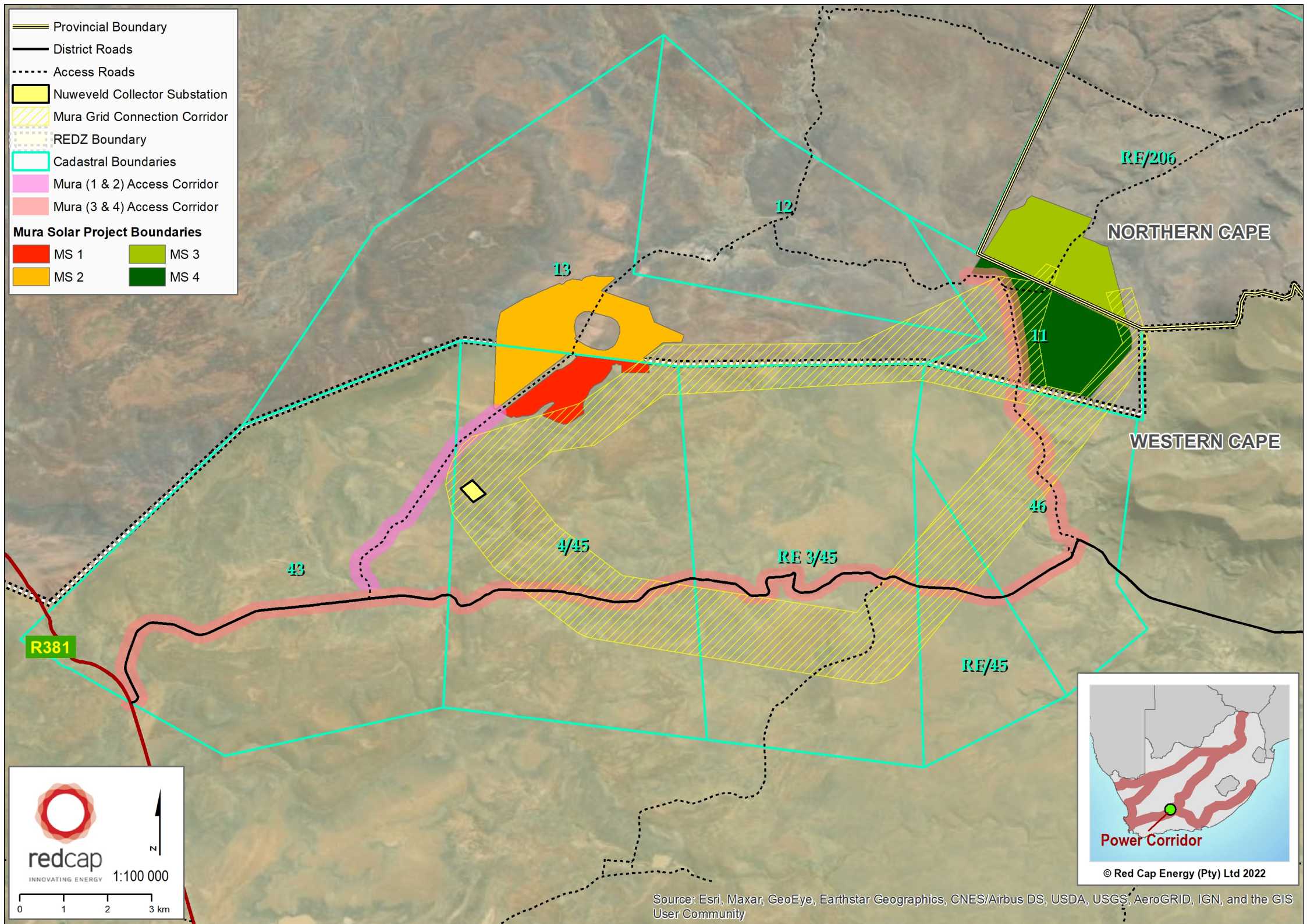

FIGURE NO: **PROJECT NO:** 41103930 **REV:**

© COPYRIGHT RESERVED
 The content of this document is privileged and confidential and may not be disclosed or reproduced without the express authorisation of the author, being "WSP Environmental (Pty) Ltd"

-  Provincial Boundary
-  District Roads
-  Access Roads
-  Nuweveld Collector Substation
-  Mura Grid Connection Corridor
-  REDZ Boundary
-  Cadastral Boundaries
-  Mura (1 & 2) Access Corridor
-  Mura (3 & 4) Access Corridor

Mura Solar Project Boundaries

 MS 1	 MS 3
 MS 2	 MS 4

redcap
INNOVATING ENERGY

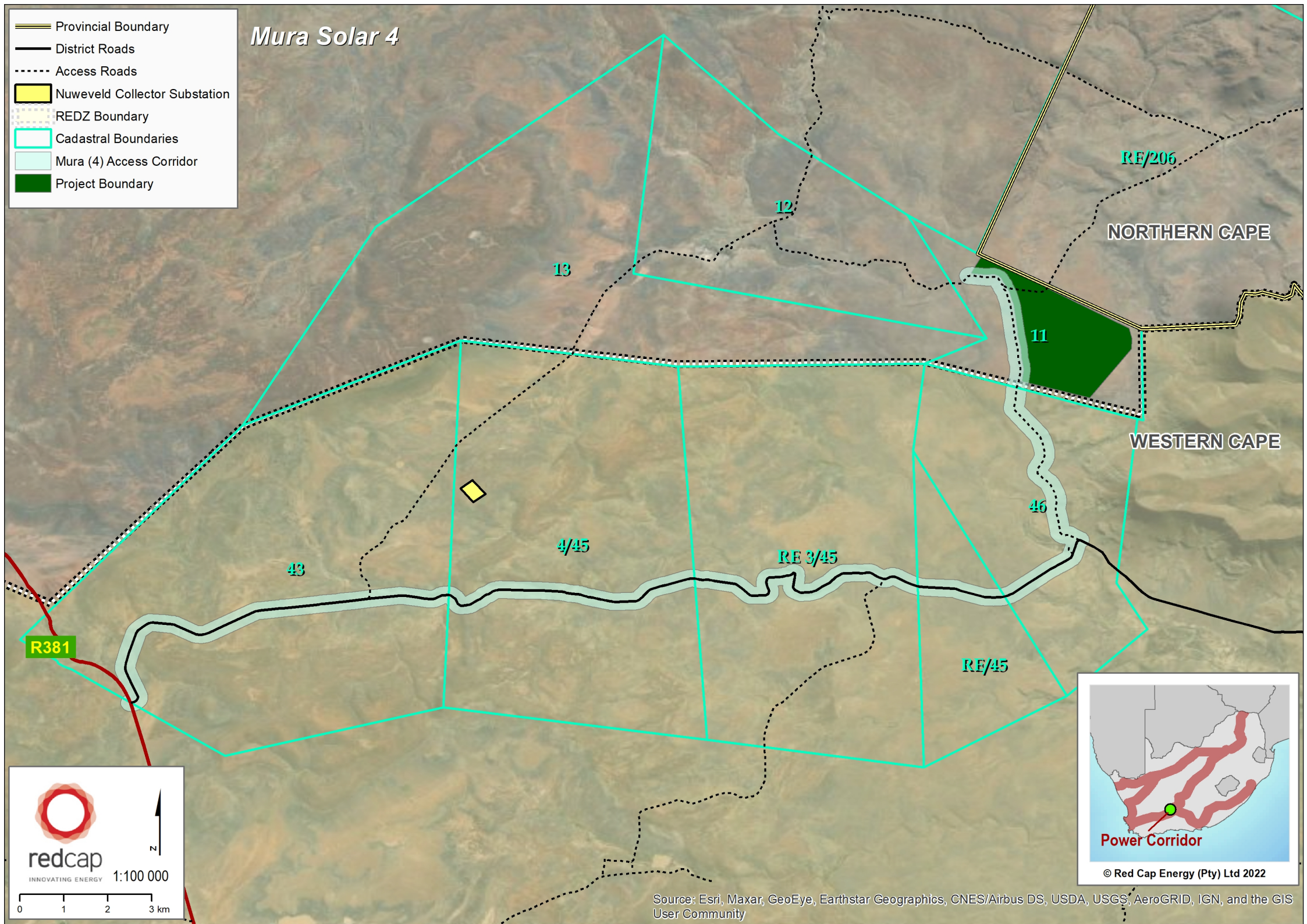
1:100 000

0 1 2 3 km

Source: Esri, Maxar, GeoEye, Earthstar Geographics, CNES/Airbus DS, USDA, USGS, AeroGRID, IGN, and the GIS User Community

Mura Solar 4

- Provincial Boundary
- District Roads
- Access Roads
- Nuweveld Collector Substation
- REDZ Boundary
- Cadastral Boundaries
- Mura (4) Access Corridor
- Project Boundary



RE/206

NORTHERN CAPE

WESTERN CAPE

11

12

13

46

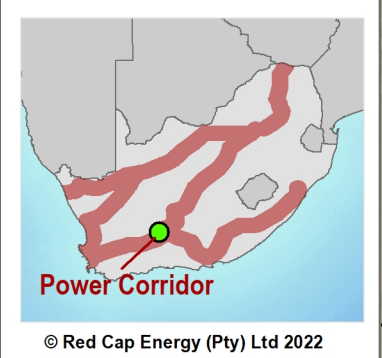
4/45

RE 3/45

RE/45

43

R381



Power Corridor

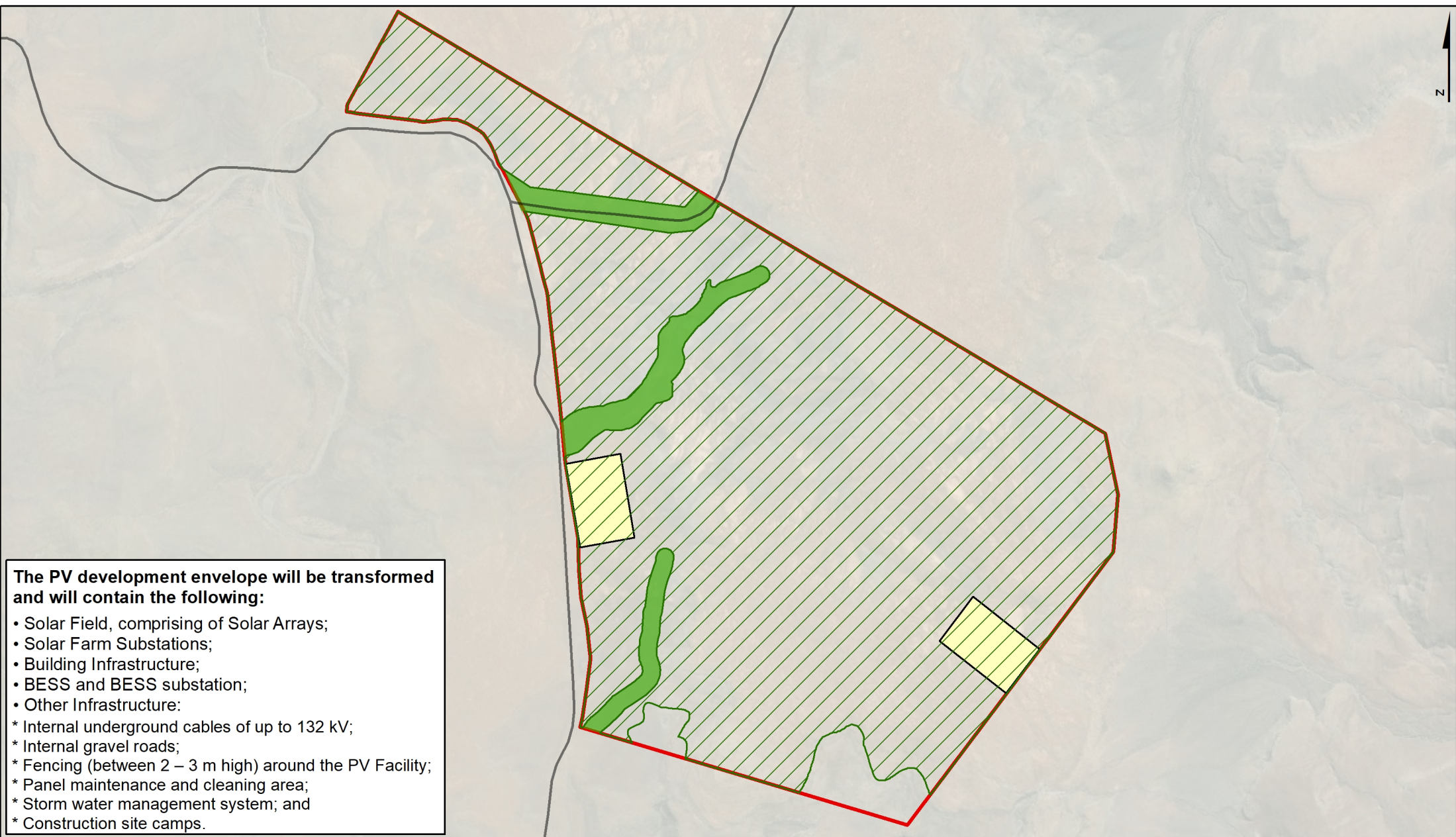
© Red Cap Energy (Pty) Ltd 2022

redcap
INNOVATING ENERGY

1:100 000

N

Source: Esri, Maxar, GeoEye, Earthstar Geographics, CNES/Airbus DS, USDA, USGS, AeroGRID, IGN, and the GIS User Community



The PV development envelope will be transformed and will contain the following:

- Solar Field, comprising of Solar Arrays;
- Solar Farm Substations;
- Building Infrastructure;
- BESS and BESS substation;
- Other Infrastructure:
- * Internal underground cables of up to 132 kV;
- * Internal gravel roads;
- * Fencing (between 2 – 3 m high) around the PV Facility;
- * Panel maintenance and cleaning area;
- * Storm water management system; and
- * Construction site camps.



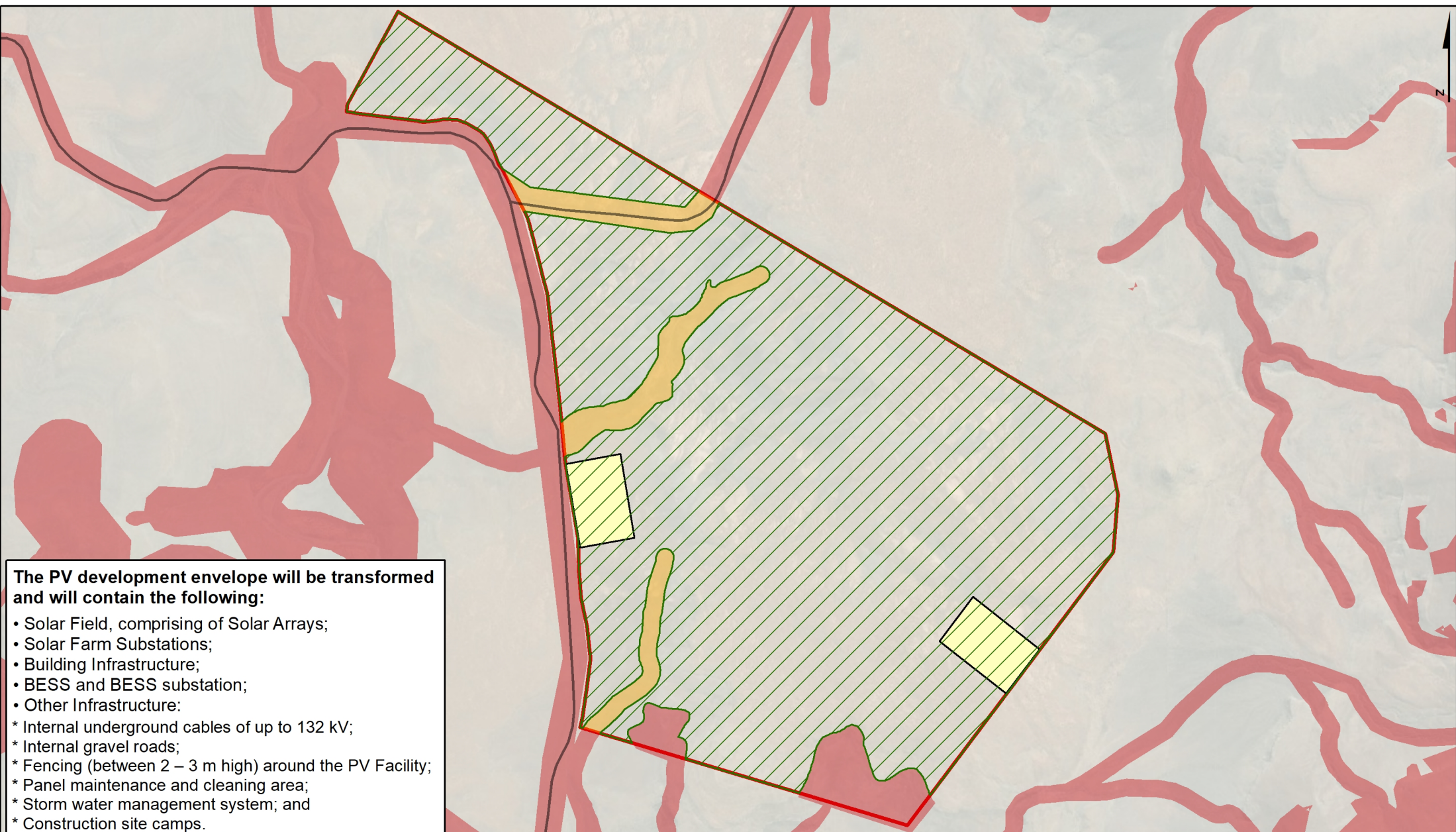
T: +27 (0) 21 790 1392
 E: info@red-cap.co.za
 Copyright © 2022 Red Cap Energy

Mura 4 PV Layout Schematic

1:20 000

The data provided in this representation are provided for informational and planning purposes only. Red Cap is not responsible for the misuse or misrepresentation of the data.

- Existing Access Road
- PV Development Envelope
- Development Envelope only for underground cables and new access tracks
- Preliminary areas for substations, switching stations (assessed separately) and BESS
- Site Boundary



The PV development envelope will be transformed and will contain the following:

- Solar Field, comprising of Solar Arrays;
- Solar Farm Substations;
- Building Infrastructure;
- BESS and BESS substation;
- Other Infrastructure:

* Internal underground cables of up to 132 kV;
 * Internal gravel roads;
 * Fencing (between 2 – 3 m high) around the PV Facility;
 * Panel maintenance and cleaning area;
 * Storm water management system; and
 * Construction site camps.



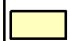





T: +27 (0) 21 790 1392
 E: info@red-cap.co.za
 Copyright © 2022 Red Cap Energy

Mura 4 PV Sensitivity & Layout Schematic

1:20 000

The data provided in this representation are provided for informational and planning purposes only. Red Cap is not responsible for the misuse or misrepresentation of the data.

 Existing Access Road	 PV Development Envelope
 Preliminary areas for substations, switching stations (assessed separately) and BESS	
 Site Boundary	
 PV Nogo	
 PV Nogo (with exception for underground cables and new access tracks)	