

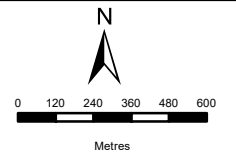


# CAMDEN 1 SEF

## LOCALITY PLAN

### Legend

- Existing Eskom Grid
- Solar Grid OHL up to 132kV:**
- Alternative 1
- Alternative 2 (Preferred)
- Alternative 3
- Alternative 4
- Grid SS & BESS Alt1
- Grid SS & BESS Alt2 (Preferred)
- Collector & Switching SS Alt2 (Preferred)
- Collector & Switching SS Alt 1
- Camden I Solar PV site extent (100MW)



### DISCLAIMER

The information on this figure was derived from various digital databases available to WSP Environmental (Pty) Ltd. All information is provided "as is" and it must be acknowledged that data, information, and maps are dynamic and in a constant state of maintenance, correction and update. WSP Environmental (Pty) Ltd cannot accept any responsibility for errors, omissions, or positional accuracy where it has not been directly responsible for the production of the data referenced. There are no warranties, expressed or implied, as to the use of this information, including the warranty of merchantability or fitness for a particular purpose. Notification of any errors will be appreciated.



**WSP ENVIRONMENTAL (PTY) LTD**  
 BUILDING C, KNIGHTSBRIDGE,  
 33 SLOANE STREET, BRAYTON  
 P O BOX 98867, SLOANE PARK 2152, RSA  
 Tel +27 (0)11 361 1360, Fax +27 (0)11 361 1361, wsp@wspgroup.co.za

**DATA SOURCE:**  
 Service Layer Credits: Source: Esri, Maxar, Earthstar Geographics, and the GIS User Community  
 Esri, Garmin, GEBCO, NOAA NGDC, and other contributors

**COORDINATE SYSTEM:** HARTBEESTHOEK94 LO31

**PROJECT TITLE:**  
 CAMDEN RENEWABLE ENERGY COMPLEX

**SCALE:** 1:24 000      **DRAWN BY:** TS

**DATE:** 2022/05/18      **REVIEWED BY:** AS

**FIGURE NO:**      **PROJECT NO:** 41103247      **REV:**

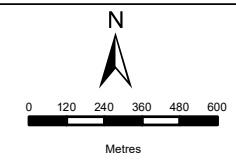
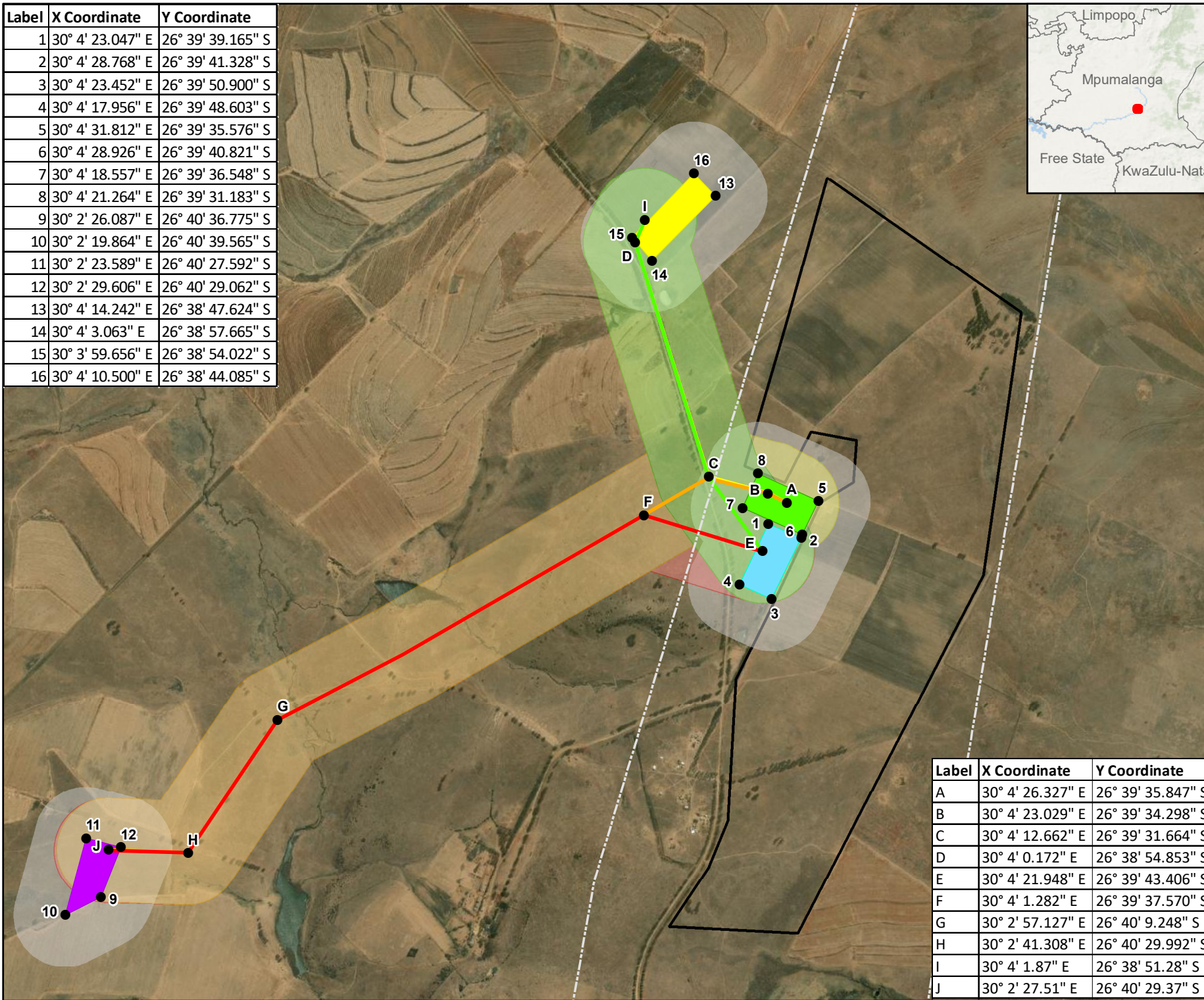
© COPYRIGHT RESERVED  
 The content of this document is privileged and confidential and may not be disclosed or reproduced without the express authorisation of the author, being "WSP Environmental (Pty) Ltd"

Label	X Coordinate	Y Coordinate
1	30° 4' 23.047" E	26° 39' 39.165" S
2	30° 4' 28.768" E	26° 39' 41.328" S
3	30° 4' 23.452" E	26° 39' 50.900" S
4	30° 4' 17.956" E	26° 39' 48.603" S
5	30° 4' 31.812" E	26° 39' 35.576" S
6	30° 4' 28.926" E	26° 39' 40.821" S
7	30° 4' 18.557" E	26° 39' 36.548" S
8	30° 4' 21.264" E	26° 39' 31.183" S
9	30° 2' 26.087" E	26° 40' 36.775" S
10	30° 2' 19.864" E	26° 40' 39.565" S
11	30° 2' 23.589" E	26° 40' 27.592" S
12	30° 2' 29.606" E	26° 40' 29.062" S
13	30° 4' 14.242" E	26° 38' 47.624" S
14	30° 4' 3.063" E	26° 38' 57.665" S
15	30° 3' 59.656" E	26° 38' 54.022" S
16	30° 4' 10.500" E	26° 38' 44.085" S



### CAMDEN 1 SEF ELECTRICAL GRID CONNECTION

- Legend**
- Turning Points
  - Existing Eskom Grid
  - Solar Grid OHL up to 132kV:**
    - Alternative 1
    - Alternative 2 (Preferred)
    - Alternative 3
    - Alternative 4
  - Collector & Switching SS Alt 1
  - Collector & Switching SS Alt2 (Preferred)
  - Grid SS & BESS Alt1
  - Grid SS & BESS Alt2 (Preferred)
  - Camden I Solar PV site extent (100MW)



**DISCLAIMER**  
The information on this figure was derived from various digital databases available to WSP Environmental (Pty) Ltd. All information is provided "as is" and it must be acknowledged that data, information, and maps are dynamic and in a constant state of maintenance, correction and update. WSP Environmental (Pty) Ltd cannot accept any responsibility for errors, omissions, or positional accuracy where it has not been directly responsible for the production of the data referenced. There are no warranties, expressed or implied, as to the use of that information, including the warranty of representability or fitness for a particular purpose. Notification of any errors will be appreciated.

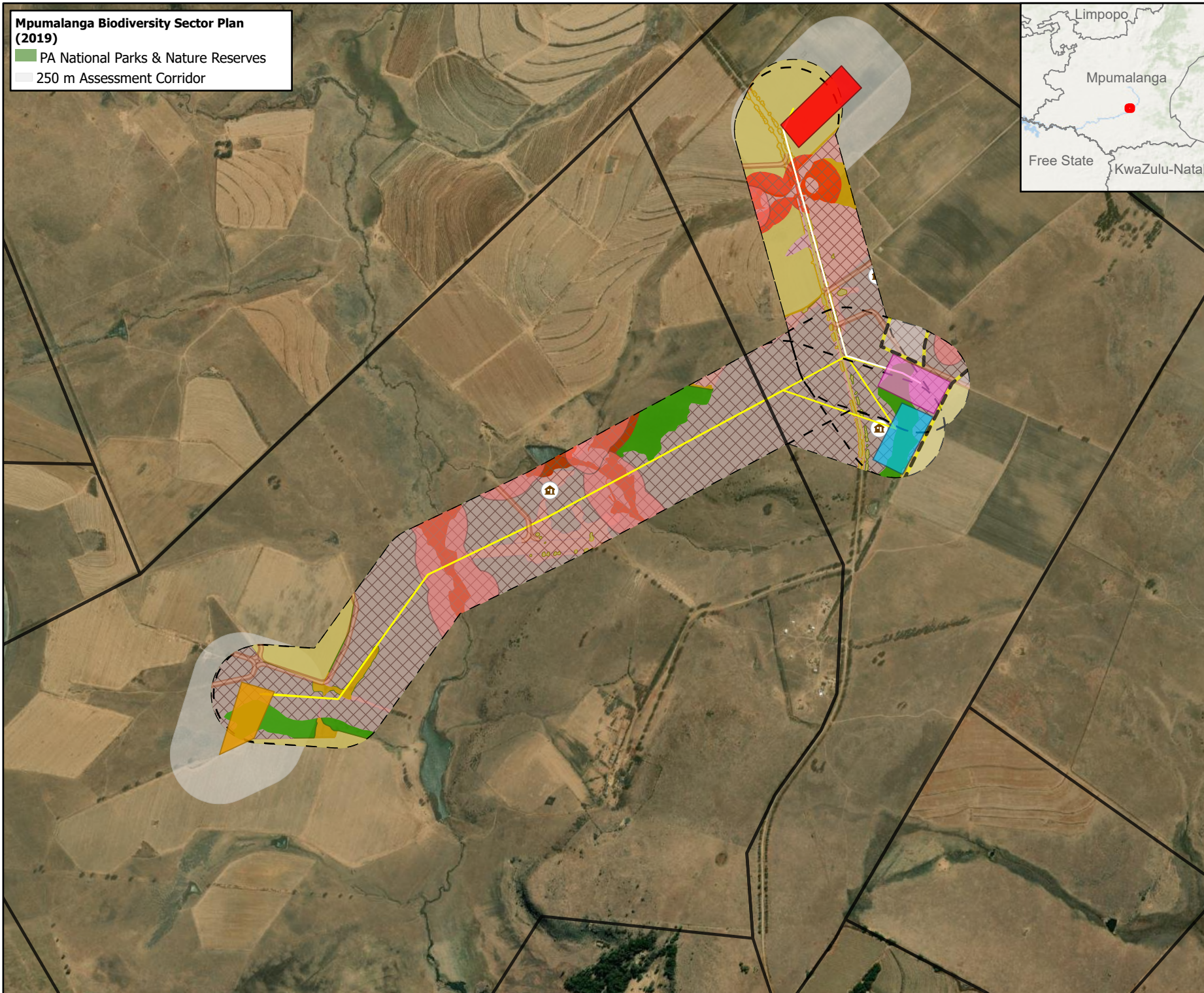


<b>WSP ENVIRONMENTAL (PTY) LTD</b> BUILDING C, KNIGH TSBURIDGE, 33 SLOANE STREET, BRIVINGTON, P O BOX 98867, SLOANE PARK 2152, RSA. Tel +27 (0)11 361 1330, Fax +27 (0)11 361 1381, wsp@wspgroup.co.za		
<b>DATA SOURCE:</b> Service Layer Credits: Source: Esri, Maxar, Earthstar Geographics, and the GIS User Community Esri, Garmin, GEBCO, NOAA NGDC, and other contributors		
<b>COORDINATE SYSTEM:</b> HARTEBEESTHOEK94 LO31		
<b>PROJECT TITLE:</b> CAMDEN RENEWABLE ENERGY COMPLEX		
SCALE: 1:24 000	DRAWN BY: TS	
DATE: 2023/05/09	REVIEWED BY: AS	
FIGURE NO:	PROJECT NO: 41103247	REV:
© COPYRIGHT RESERVED The content of this document is privileged and confidential and may not be disclosed or reproduced without the express authorisation of the author, being "WSP Environmental (Pty) Ltd"		

Label	X Coordinate	Y Coordinate
A	30° 4' 26.327" E	26° 39' 35.847" S
B	30° 4' 23.029" E	26° 39' 34.298" S
C	30° 4' 12.662" E	26° 39' 31.664" S
D	30° 4' 0.172" E	26° 38' 54.853" S
E	30° 4' 21.948" E	26° 39' 43.406" S
F	30° 4' 1.282" E	26° 39' 37.570" S
G	30° 2' 57.127" E	26° 40' 9.248" S
H	30° 2' 41.308" E	26° 40' 29.992" S
I	30° 4' 1.87" E	26° 38' 51.28" S
J	30° 2' 27.51" E	26° 40' 29.37" S

**Mpumalanga Biodiversity Sector Plan (2019)**

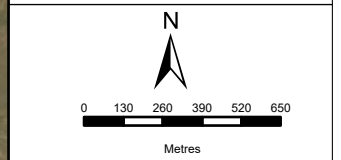
- PA National Parks & Nature Reserves
- 250 m Assessment Corridor



**CAMDEN 1 SEF**

**GRID CONNECTION**

- Legend**
- Internal Roads
  - Farm Portions
  - CD 1 Solar PV Grid up to 132kV - Alternative 2 (Preferred)
  - CD 1 Solar PV Grid up to 132kV - Alternative 1, 3 & 4
  - Gridline Connection 250m corridor
  - 250 m Assessment Corridor
  - Collector & Switching SS Alt2 (Preferred)
  - Collector & Switching SS Alt 1
  - BESS & SS Alt1
  - BESS & SS Alt2 (Preferred)
- Heritage**
- Burial Site (incl. 30m buffer)
  - Structure
- Avifauna**
- High Sensitivity Grassland
  - Very High Sensitivity Wetlands (No-Go) (Limited Infrastructure)
- Aquatic Sensitivity**
- Very High
- Ecology Sensitivity**
- Very High
  - High
  - Medium-High
  - Medium
  - Medium-Low
  - Low



**DISCLAIMER**

The information on this figure was derived from various digital databases available to WSP Environmental (Pty) Ltd. All information is provided "as is" and it must be acknowledged that data, information, and maps are dynamic and in a constant state of maintenance, correction and update. WSP Environmental (Pty) Ltd cannot accept any responsibility for errors, omissions, or positional accuracy where it has not been directly responsible for the production of the data referenced. There are no warranties, expressed or implied, as to the use of this information, including the warranty of merchantability or fitness for a particular purpose. Notification of any errors will be appreciated.



**WSP ENVIRONMENTAL (PTY) LTD**  
 BUILDING C, KNIGHTSBRIDGE,  
 33 SLOANE STREET, BRYANSTON  
 P O BOX 98867, SLOANE PARK 2152, RSA  
 Tel +27 (0)11 961 1380, Fax +27 (0)11 961 1381, wsp@wspgroup.co.za

**DATA SOURCE:**  
 Service Layer Credits: World Imagery; Earthstar Geographics  
 World Ocean Base; Esri, GEBCO, DeLorme, NaturalVue

**COORDINATE SYSTEM:** WGS 1984 UTM ZONE 35S

**PROJECT TITLE:**  
 CAMDEN RENEWABLE ENERGY COMPLEX

**SCALE:** 1:25,000 **DRAWN BY:** TS

**DATE:** 2023/03/24 **REVIEWED BY:** AS

**FIGURE NO:** **PROJECT NO:** 41103247 **REV:**

**© COPYRIGHT RESERVED**  
 The content of this document is privileged and confidential and may not be disclosed or reproduced without the express authorisation of the author, being "WSP Environmental (Pty) Ltd"