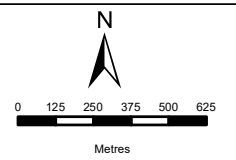


CAMDEN 1 WEF ELECTRICAL GRID CONNECTION

Legend

- Existing Eskom Grid
- CD I WEF Grid 132kV:**
- Alternative 1 (Preferred)
- Alternative 2
- Alternative 3
- Alternative 4
- SS & BESS Alt1
- SS & BESS Alt2 (Preferred)
- Eskom Collector & Switching**
- SS Alt 1 (5ha)
- SS Alt 2 (5ha)(Preferred)



DISCLAIMER
 The information on this figure was derived from various digital databases available to WSP Environmental (Pty) Ltd. All information is provided "as is" and it must be acknowledged that data, information, and maps are dynamic and in a constant state of maintenance, correction and update. WSP Environmental (Pty) Ltd cannot accept any responsibility for errors, omissions, or positional accuracy where it has not been directly responsible for the production of the data referenced. There are no warranties, expressed or implied, as to the use of this information, including the warranty of merchantability or fitness for a particular purpose. Notification of any errors will be appreciated.



WSP ENVIRONMENTAL (PTY) LTD
 BUILDING C, KNIGH TSBRIDGE,
 33 SLOANE STREET, BRIVANSTON,
 P O BOX 98867, SLOANE PARK 2152, RSA.
 Tel +27 (0)11 361 1330, Fax +27 (0)11 361 1381, wsp@wspgroup.co.za

DATA SOURCE:
 Service Layer Credits: Source: Esri, Maxar, Earthstar Geographics, and the GIS User Community
 Esri, Garmin, GEBCO, NOAA NGDC, and other contributors

COORDINATE SYSTEM: HARTEBEESTHOEK94 LO31

PROJECT TITLE:
 CAMDEN RENEWABLE ENERGY COMPLEX

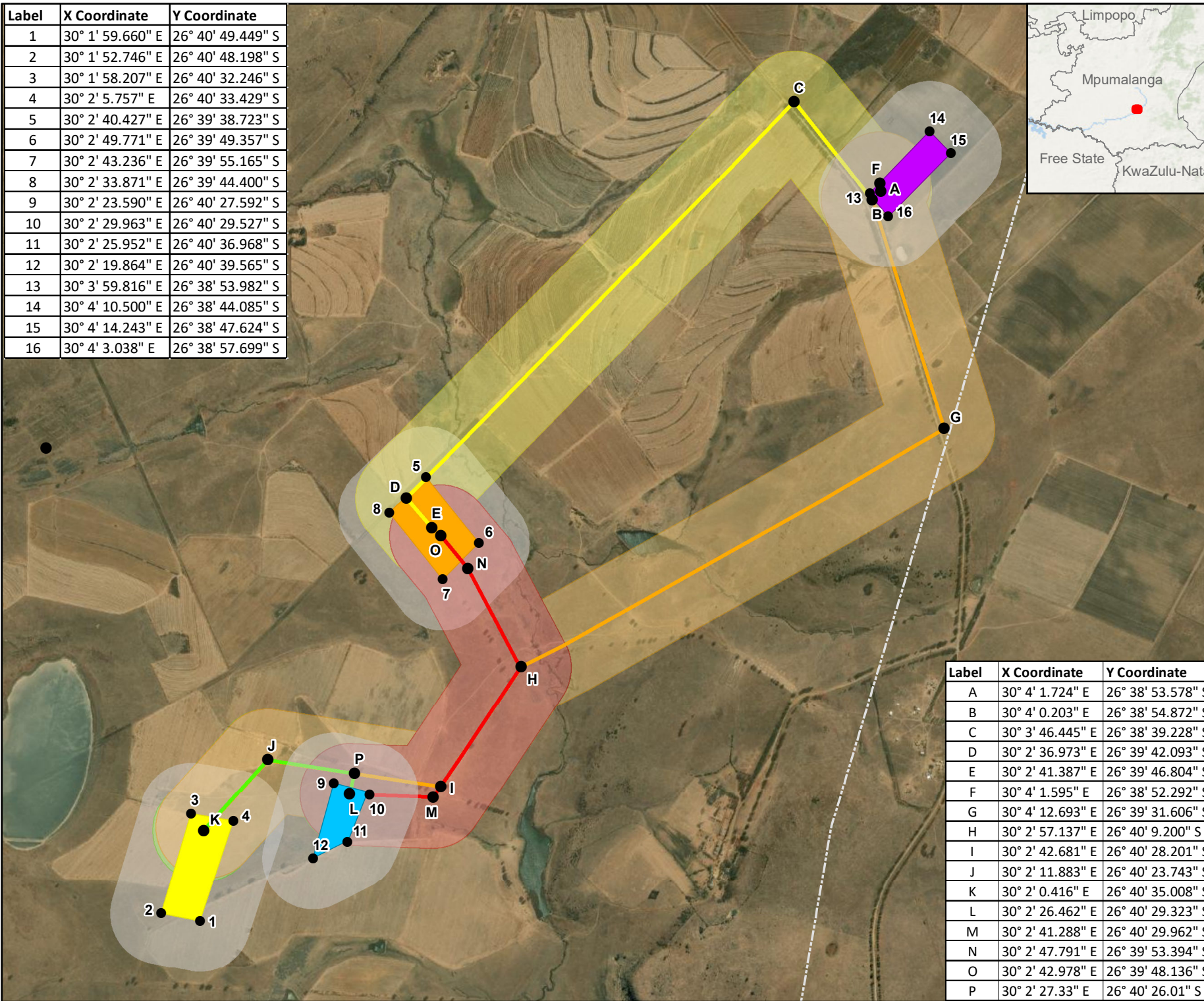
SCALE: 1:25 000 **DRAWN BY:** TS

DATE: 2023/05/09 **REVIEWED BY:** AS

FIGURE NO: **PROJECT NO:** 41103247 **REV:**

© COPYRIGHT RESERVED
 The content of this document is privileged and confidential and may not be disclosed or reproduced without the express authorisation of the author, being "WSP Environmental (Pty) Ltd"

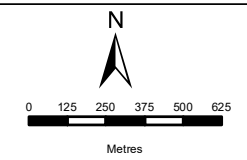
Label	X Coordinate	Y Coordinate
1	30° 1' 59.660" E	26° 40' 49.449" S
2	30° 1' 52.746" E	26° 40' 48.198" S
3	30° 1' 58.207" E	26° 40' 32.246" S
4	30° 2' 5.757" E	26° 40' 33.429" S
5	30° 2' 40.427" E	26° 39' 38.723" S
6	30° 2' 49.771" E	26° 39' 49.357" S
7	30° 2' 43.236" E	26° 39' 55.165" S
8	30° 2' 33.871" E	26° 39' 44.400" S
9	30° 2' 23.590" E	26° 40' 27.592" S
10	30° 2' 29.963" E	26° 40' 29.527" S
11	30° 2' 25.952" E	26° 40' 36.968" S
12	30° 2' 19.864" E	26° 40' 39.565" S
13	30° 3' 59.816" E	26° 38' 53.982" S
14	30° 4' 10.500" E	26° 38' 44.085" S
15	30° 4' 14.243" E	26° 38' 47.624" S
16	30° 4' 3.038" E	26° 38' 57.699" S



CAMDEN 1 WEF GRID CONNECTION

Legend

- Turning Points
- Existing Eskom Grid
- Eskom Collector & Switching**
- SS Alt 1 (5ha)
- SS Alt 2 (5ha)(Preferred)
- CD I WEF Grid 132kV:**
- Alternative 1 (Preferred)
- Alternative 2
- Alternative 3
- Alternative 4
- SS & BESS Alt1
- SS & BESS Alt2 (Preferred)



DISCLAIMER
The information on this figure was derived from various digital databases available to WSP Environmental (Pty) Ltd. All information is provided 'as is' and it must be acknowledged that data, information, and maps are dynamic and in a constant state of maintenance, correction and update. WSP Environmental (Pty) Ltd cannot accept any responsibility for errors, omissions, or positional accuracy where it has not been directly responsible for the production of the data referenced. There are no warranties, expressed or implied, as to the use of this information, including the warranty of availability or fitness for a particular purpose. Notification of any errors will be appreciated.



WSP ENVIRONMENTAL (PTY) LTD
BUILDING C, KNIGHTSBRIDGE,
33 SLAINE STREET, BRIVANSTON,
P O BOX 98867, SLAINE PARK 2152, RSA.
Tel +27 (0)11 361 1330, Fax +27 (0)11 361 1381, wsp@wspgroup.co.za

DATA SOURCE: Service Layer Credits: Source: Esri, Maxar, Earthstar Geographics, and the GIS User Community
Esri, Garmin, GEBCO, NOAA NGDC, and other contributors

COORDINATE SYSTEM: HARTEBEESTHOEK94 LO31		
PROJECT TITLE: CAMDEN RENEWABLE ENERGY COMPLEX		
SCALE: 1:24 500	DRAWN BY: TS	
DATE: 2023/05/09	REVIEWED BY: AS	
FIGURE NO:	PROJECT NO: 41103247	REV:

Label	X Coordinate	Y Coordinate
A	30° 4' 1.724" E	26° 38' 53.578" S
B	30° 4' 0.203" E	26° 38' 54.872" S
C	30° 3' 46.445" E	26° 38' 39.228" S
D	30° 2' 36.973" E	26° 39' 42.093" S
E	30° 2' 41.387" E	26° 39' 46.804" S
F	30° 4' 1.595" E	26° 38' 52.292" S
G	30° 4' 12.693" E	26° 39' 31.606" S
H	30° 2' 57.137" E	26° 40' 9.200" S
I	30° 2' 42.681" E	26° 40' 28.201" S
J	30° 2' 11.883" E	26° 40' 23.743" S
K	30° 2' 0.416" E	26° 40' 35.008" S
L	30° 2' 26.462" E	26° 40' 29.323" S
M	30° 2' 41.288" E	26° 40' 29.962" S
N	30° 2' 47.791" E	26° 39' 53.394" S
O	30° 2' 42.978" E	26° 39' 48.136" S
P	30° 2' 27.33" E	26° 40' 26.01" S

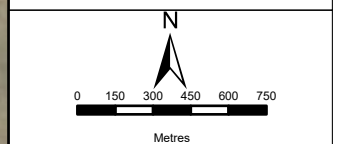
© COPYRIGHT RESERVED
The content of this document is privileged and confidential and may not be disclosed or reproduced without the express authorisation of the author, being 'WSP Environmental (Pty) Ltd'



CAMDEN 1 WEF GRID CONNECTION

- Legend**
- Internal Roads
 - Farm Portions
 - SS & BESS, incl. Eskom SS Alt1
 - SS & BESS, incl. Eskom SS Alt2 (Preferred)
 - Common Collector & Switching SS Alt 1
 - Common Collector & Switching SS Alt2 (Preferred)
 - 250 m Assessment Corridor
- WEF Grid up to 132kV Alternatives**
- Alternative 1 (Preferred)
 - Alternative 2
 - Alternative 3
 - Alternative 4
 - Gridline Connection 250m corridor
- Heritage**
- Burial Site
 - Structure
- Avifauna**
- High Sensitivity Grassland
 - High Sensitivity Pans
 - Very High Sensitivity Wetlands (No-Go)
- Ecology Sensitivity**
- Very High
 - High
 - Medium-High
 - Medium
 - Medium-Low
 - Low

- Mpumalanga Biodiversity Sector Plan (2019)**
- PA National Parks & Nature Reserves
 - CBA Irreplaceable
 - CBA Optimal
 - ESA Protected Area buffer
 - Moderately modified- Old lands
 - Heavily modified
- Aquatic Sensitivity**
- Moderate
 - Very High



DISCLAIMER

The information on this figure was derived from various digital databases available to WSP Environmental (Pty) Ltd. All information is provided "as is" and it must be acknowledged that data, information, and maps are dynamic, and in a constant state of maintenance, correction and update. WSP Environmental (Pty) Ltd cannot accept any responsibility for errors, omissions, or positional accuracy where it has not been directly responsible for the production of the data referenced. There are no warranties, expressed or implied, as to the use of this information, including the warranty of merchantability or fitness for a particular purpose. Notification of any errors will be appreciated.

WSP ENVIRONMENTAL (PTY) LTD
 BUILDING C, KNIGHTSBRIDGE,
 33 SLOANE STREET, BRYANSTON
 P O BOX 99887, SLOANE PARK 2152, RSA
 Tel +27 (0)11 961 1380, Fax +27 (0)11 961 1381, wsp@wspgroup.co.za

DATA SOURCE:
 Service Layer Credits: World Ocean Base; Esri, GEBCO, DeLorme, NaturalVue, World Imagery; Maxar

COORDINATE SYSTEM: HARTEBEESTHOEK94 LO31

PROJECT TITLE:
 CAMDEN RENEWABLE ENERGY COMPLEX

SCALE: 1:30,000 **DRAWN BY:** TS

DATE: 2023/03/24 **REVIEWED BY:** AS

FIGURE NO: **PROJECT NO:** 41103247 **REV:**

© COPYRIGHT RESERVED
 The content of this document is privileged and confidential and may not be disclosed or reproduced without the express authorisation of the author, being "WSP Environmental (Pty) Ltd"

