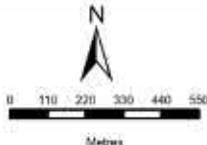


**CAMDEN 1 SEF**

**LAYOUT MAP**

**Legend**

- Existing Eskom Grid
- Camden I Solar PV site extent (100MW)
- BESS & Eskom SS (9ha) Alt1
- BESS & Eskom SS (9ha) Alt2 (Preferred)
- Construction Camps (2ha ea)
- Eskom Collector & Switching SS Alt2 (5ha)(Preferred)
- Eskom Collector & Switching SS Alt 1 (5ha)
- Farm Portions
- Grid Connections:**
  - CD I Solar PV Grid up to 132kV - Alternative 2 (Preferred)
  - CD I Solar PV Grid up to 132kV - Alternative 1,3 & 4
  - Eskom Collector & Switching SS Alt 1 (5ha)
- Powerline Alternatives:**
  - Powerline (upto 132 kv)
  - Underground Cable up to 33kV
- Roads**
  - Secondary road
  - Other
  - Internal Roads



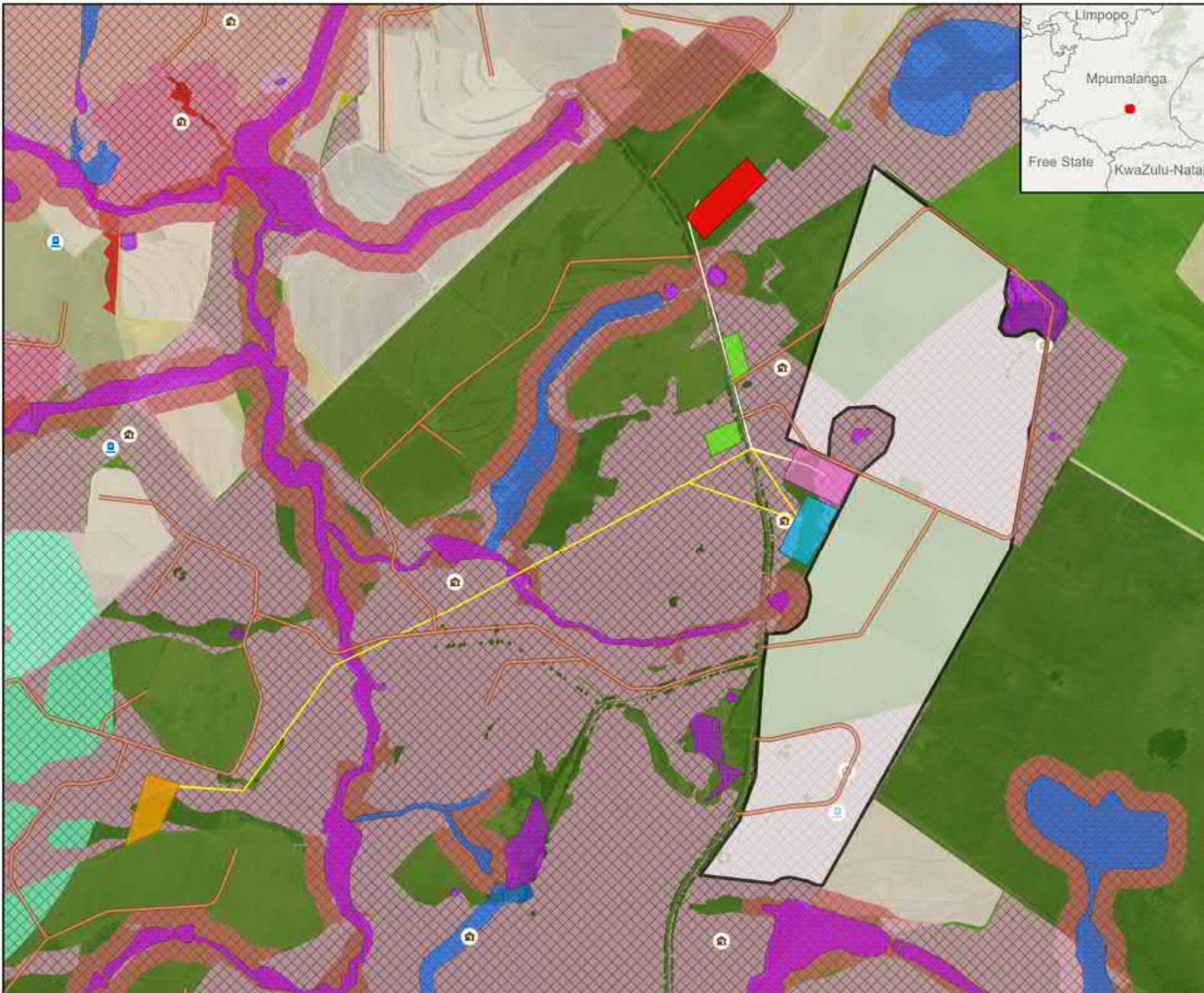
**DISCLAIMER**  
 The information on this figure was derived from various digital databases available to WSP Environmental (Pty) Ltd. All information is provided "as is" and it must be understood that while it is believed to be accurate, WSP Environmental (Pty) Ltd. cannot accept any responsibility for errors, omissions, or inaccuracies that may occur. The information is provided for the production of the data referenced. There are no warranties, expressed or implied, as to the use of the information, including the accuracy or reliability of the same, for a particular purpose. Misuse of any items will be penalized.



**DATA SOURCE:**  
 Revised Layer Credits: World Imagery, Esri/arc Geographic World Coverage Base: Esri, GEBCO, DeLorme, NaturalSat

<b>COORDINATE SYSTEM</b>		
<b>PROJECT TITLE</b>		
CAMDEN RENEWABLE ENERGY COMPLEX		
<b>SCALE:</b> 1:22 000	<b>DRAWN BY:</b> TS	
<b>DATE:</b> 2022/08/12	<b>REVIEWED BY:</b> AS	
<b>FIGURE NO.:</b>	<b>PROJECT NO.:</b> 41102047	<b>REV.:</b>

**© COPYRIGHT RESERVED**  
 The content of this document is proprietary and confidential and may not be disclosed or reproduced without the express authorization of the author, being WSP Environmental (Pty) Ltd.

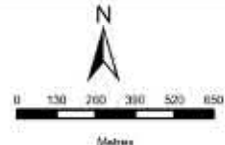


# CAMDEN 1 SEF

## SENSITIVITY MAP

- Legend**
- Internal Roads
  - CD 1 Solar PV Grid up to 132kV - Alternative 2 (Preferred)
  - CD 1 Solar PV Grid up to 132kV - Alternative 1, 3 & 4
  - Eskom Collector & Switching SS Alt2 (5ha) (Preferred)
  - Eskom Collector & Switching SS Alt 1 (5ha)
  - Camden 1 Solar PV site extent (100MW)
  - BESS & Eskom SS (9ha) Alt1
  - BESS & Eskom SS (9ha) Alt2 (Preferred)
  - Construction Camps (2ha ea)

- Heritage**
- Burial Site
  - Structure
- Bats - Sensitivities**
- Medium
  - High
- Avifauna**
- High Sensitivity Grassland
  - High Sensitivity Pains
  - Very High Sensitivity Wetlands
- Mpumalanga Biodiversity Sector Plan (2019)**
- PA National Parks & Nature Reserves
  - CBA Irreplaceable
  - CBA Optimal
  - ESA Local corridor
  - ESA Protected Area buffer
  - Other Natural Areas
  - Moderately modified- Old lands
  - Heavily modified



**DISCLAIMER**

The information on this figure was derived from various digital databases available to WSP Environmental (Pty) Ltd. All information is provided 'as is' and it must be understood that data, if obsolete and/or incomplete, will be a combined result of maintenance, correction and update. WSP Environmental (Pty) Ltd. cannot accept any responsibility for errors, omissions, or inaccuracies in the data, which are solely responsible for the production of the data. Therefore, there are no warranties, expressed or implied, as to the use of the information, including the accuracy, reliability or fitness for a particular purpose. Misuse of any errors will be appreciated.



**DATA SOURCE:**  
 Service Layer Details: World Ocean Base, Esri, GEBCO, DeLorme, TetraPlex, Work Imagery, Mapbox

**COORDINATE SYSTEM:**

**PROJECT TITLE:**  
 CAMDEN RENEWABLE ENERGY COMPLEX

**SCALE:** 1:25 000      **DRAWN BY:** TS

**DATE:** 2022/08/15      **REVIEWED BY:** AS

**FIGURE NO.:**      **PROJECT NO.:** 41102047      **REV.:**

**© COPYRIGHT RESERVED**  
 The content of this document is confidential and may not be disclosed or reproduced without the express authorization of the author, being WSP Environmental (Pty) Ltd.