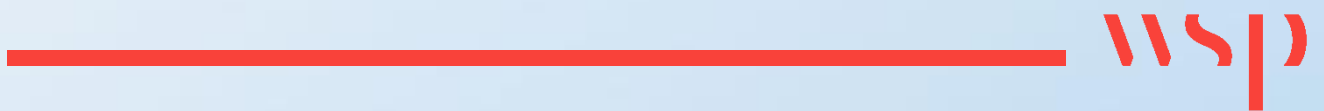
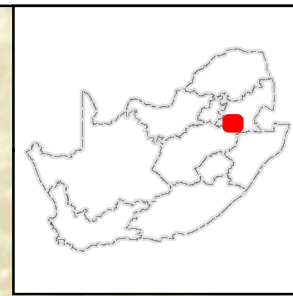


Appendix E

MAPS



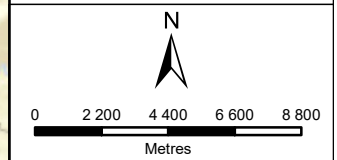


TOURNÉE SOLAR PV CLUSTER

LOCALITY

Legend

- Tournée 1 Solar PV Facility
- Tournée 2 Solar PV Facility



DISCLAIMER
 The information on this figure was derived from various digital databases available to WSP Environmental (Pty) Ltd. All information is provided "as is" and it must be acknowledged that data, information, and maps are dynamic and in a constant state of maintenance, correction and update. WSP Environmental (Pty) Ltd cannot accept any responsibility for errors, omissions, or positional accuracy where it has not been directly responsible for the production of the data referenced. There are no warranties, expressed or implied, as to the use of this information, including the warranty of merchantability or fitness for a particular purpose. Notification of any errors will be appreciated.



WSP ENVIRONMENTAL (PTY) LTD
 BUILDING C, KNIGHTSBRIDGE
 33 SLOANE STREET, BRYANSTON
 P O BOX 98867, SLOANE PARK 2152, RSA
 Tel +27 (0)11 361 1360, Fax +27 (0)11 361 1381, wsp@wspgroup.co.za

DATA SOURCE:
 SERVICE LAYER CREDITS: SOURCES: ESRI, HERE, GARMIN, USGS, INTERMAP, INCREMENT P, NRCAN, ESRI JAPAN, METI, ESRI CHINA (HONG KONG), ESRI KOREA, ESRI (THAILAND), NGCC, (C) OPENSTREETMAP CONTRIBUTORS.

PROJECTION: Hartebeesthoek94 Lo29

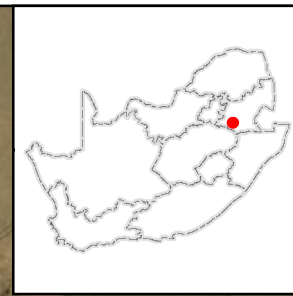
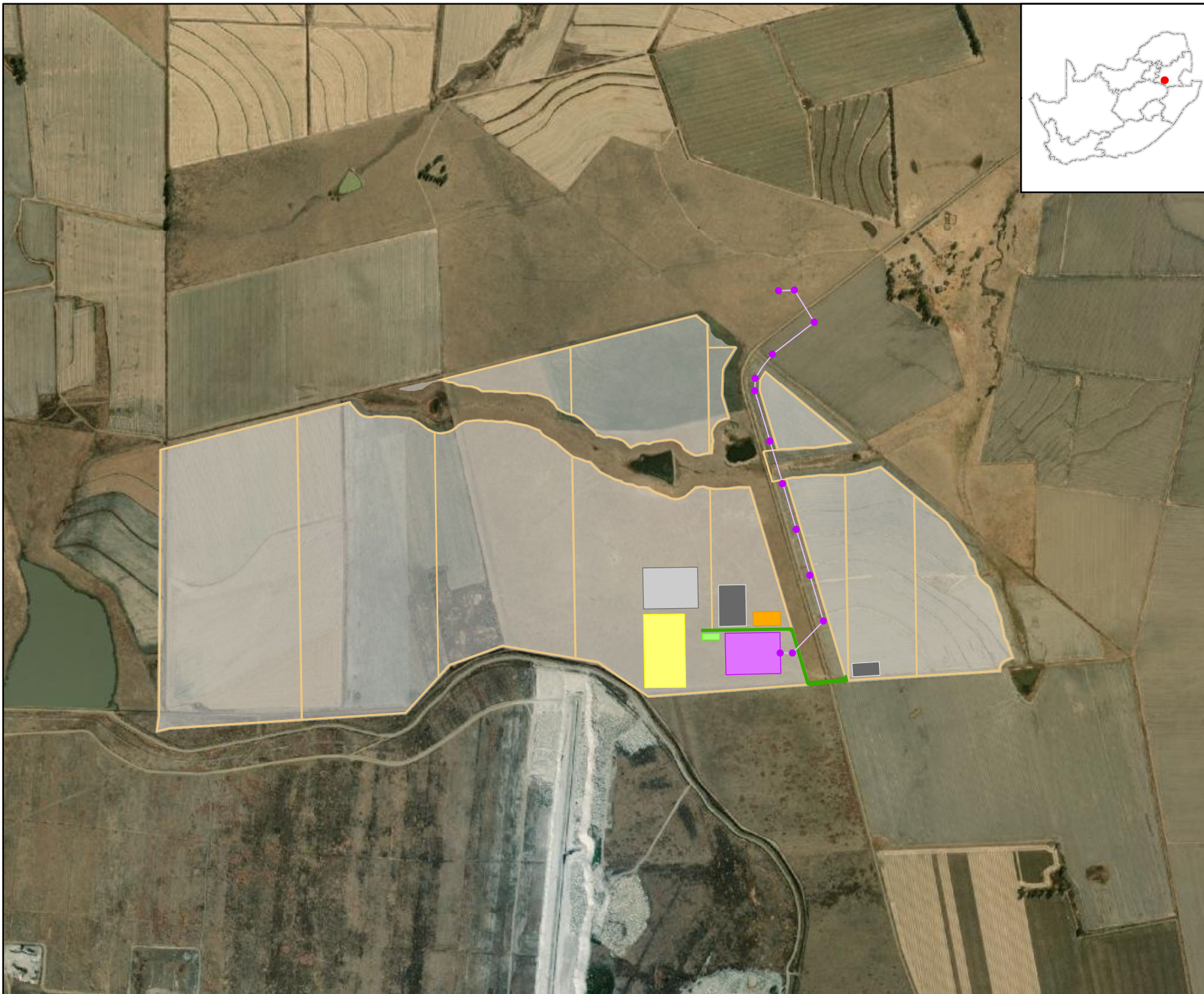
PROJECT TITLE:
 TOURNEE EIA

SCALE: 1:250 000 **DRAWN BY:** TS

DATE: 2023/02/22 **REVIEWED BY:** AS

FIGURE NO: **PROJECT NO:** 41104569 **REV:**

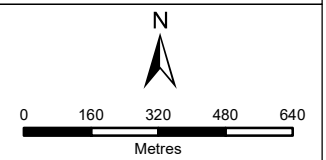
© COPYRIGHT RESERVED
 The content of this document is privileged and confidential and may not be disclosed or reproduced without the express authorisation of the author, being "WSP Environmental (Pty) Ltd"



TOURNÉE SOLAR PV CLUSTER

TOURNÉE 2: OPTIMISED LAYOUT

- Legend**
- Tournée interconnection OHPL - pylons
 - Tournée interconnection OHPL
 - PV Development
 - Access road
 - BESS
 - Concrete batching plant
 - Construction camp
 - Facility substation & Eskom collector station
 - Internal roads
 - Laydown area
 - O&M building



DISCLAIMER
 The information on this figure was derived from various digital databases available to WSP Environmental (Pty) Ltd. All information is provided "as is" and it must be acknowledged that data, information, and maps are dynamic and in a constant state of maintenance, correction and update. WSP Environmental (Pty) Ltd cannot accept any responsibility for errors, omissions, or positional accuracy where it has not been directly responsible for the production of the data referenced. There are no warranties, expressed or implied, as to the use of this information, including the warranty of merchantability or fitness for a particular purpose. Notification of any errors will be appreciated.



WSP ENVIRONMENTAL (PTY) LTD
 BUILDING C, KNIGHTSBRIDGE
 33 SLOANE STREET, BRYANSTON
 P O BOX 96867, SLOANE PARK 2152, RSA
 Tel +27 (0)11 361 1360, Fax +27 (0)11 361 1381, wsp@wspgroup.co.za

DATA SOURCE:
 SERVICE LAYER CREDITS: SOURCE: ESRI, MAXAR, EARTHSTAR GEOGRAPHICS, AND THE GIS USER COMMUNITY

PROJECTION: Hartebeesthoek94 Lo29

PROJECT TITLE:
 TOURNÉE EIA

SCALE: 1:18 000 **DRAWN BY:** TS

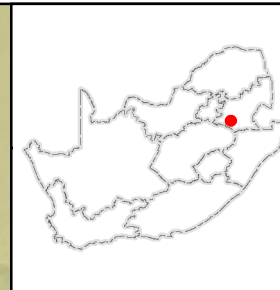
DATE: 2023/09/22 **REVIEWED BY:** AS

FIGURE NO: **PROJECT NO:** 41104569 **REV:**

© COPYRIGHT RESERVED
 The content of this document is privileged and confidential and may not be disclosed or reproduced without the express authorisation of the author, being WSP Environmental (Pty) Ltd

Mpumalanga Biodiversity Sector Plan (2022)

- CBA Optimal
- Other Natural

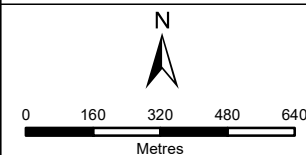
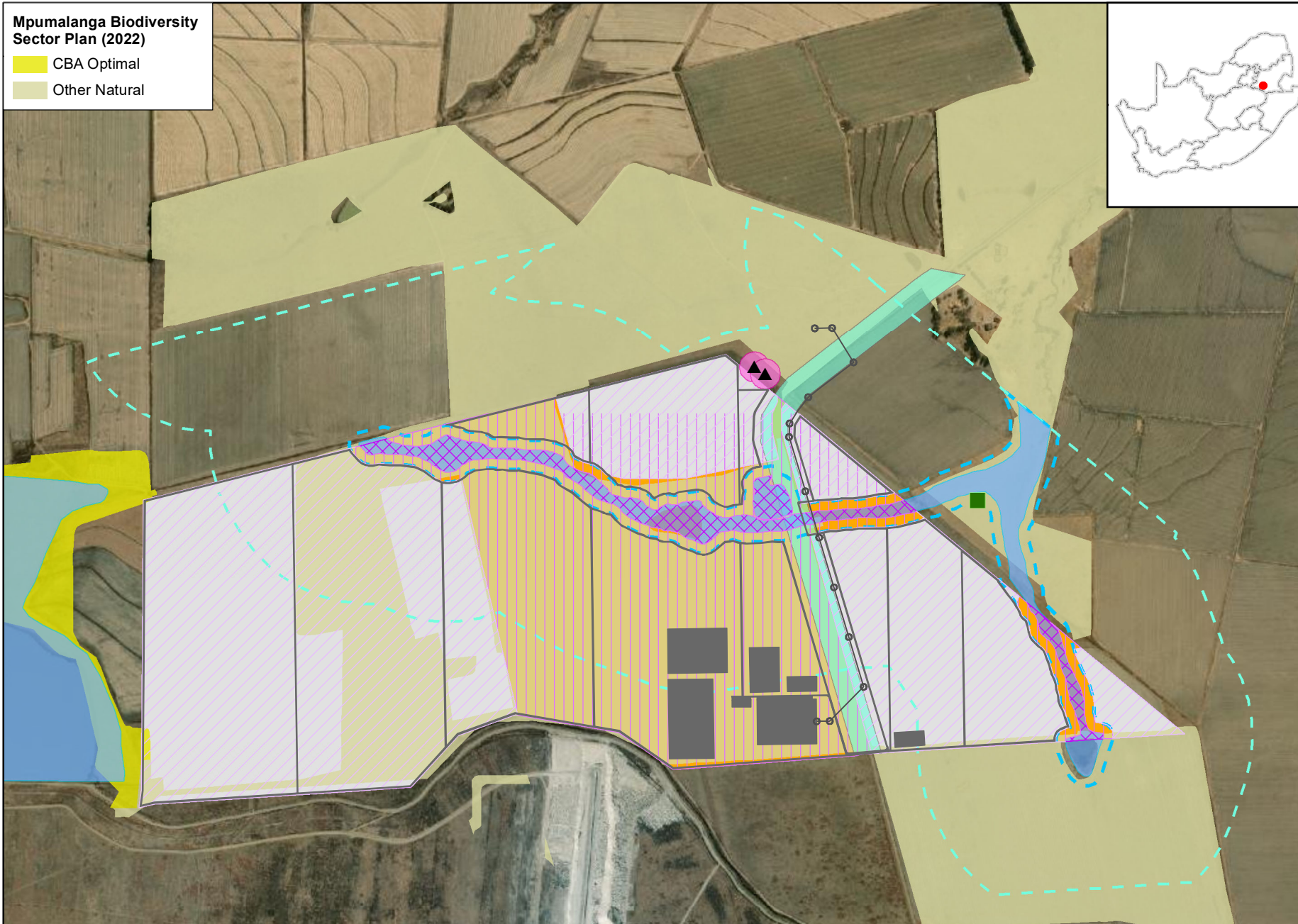


TOURNEE SOLAR PV CLUSTER

**TOURNEE 2:
OPTIMISED LAYOUT
SENSITIVITY MAP**

Legend

- Tournee interconnection
- OHPL & pylons
- Infrastructure Footprints



DISCLAIMER

The information on this figure was derived from various digital databases available to WSP Environmental (Pty) Ltd. All information is provided 'as is' and it must be acknowledged that data, information, and maps are dynamic and in a constant state of maintenance, correction and update. WSP Environmental (Pty) Ltd cannot accept any responsibility for errors, omissions, or positional accuracy where it has not been directly responsible for the production of the data referenced. There are no warranties, expressed or implied, as to the use of this information, including the warranty of merchantability or fitness for a particular purpose. Notification of any errors will be appreciated.



WSP ENVIRONMENTAL (PTY) LTD
 BUILDING C, KNIGHTSBRIDGE,
 33 SLOANE STREET, BRYANSTON
 P O BOX 96867, SLOANE PARK, 2152, RSA
 Tel +27 (0)11 361 1360, Fax +27 (0)11 361 1381, wsp@wspgroup.co.za

DATA SOURCE:
 SERVICE LAYER CREDITS: SOURCE: ESRI, MAXAR,
 EARTHSTAR GEOGRAPHICS, AND THE GIS USER
 COMMUNITY

PROJECTION: Hartebeesthoek94 Lo29

PROJECT TITLE:

TOURNEE EIA

SCALE: 1:18 000

DRAWN BY: TS

DATE: 2023/09/26

REVIEWED BY: AS

FIGURE NO:

PROJECT NO: 41104569

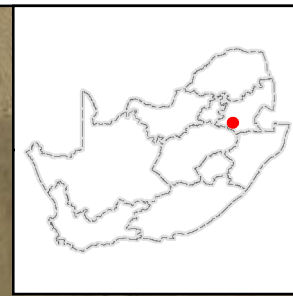
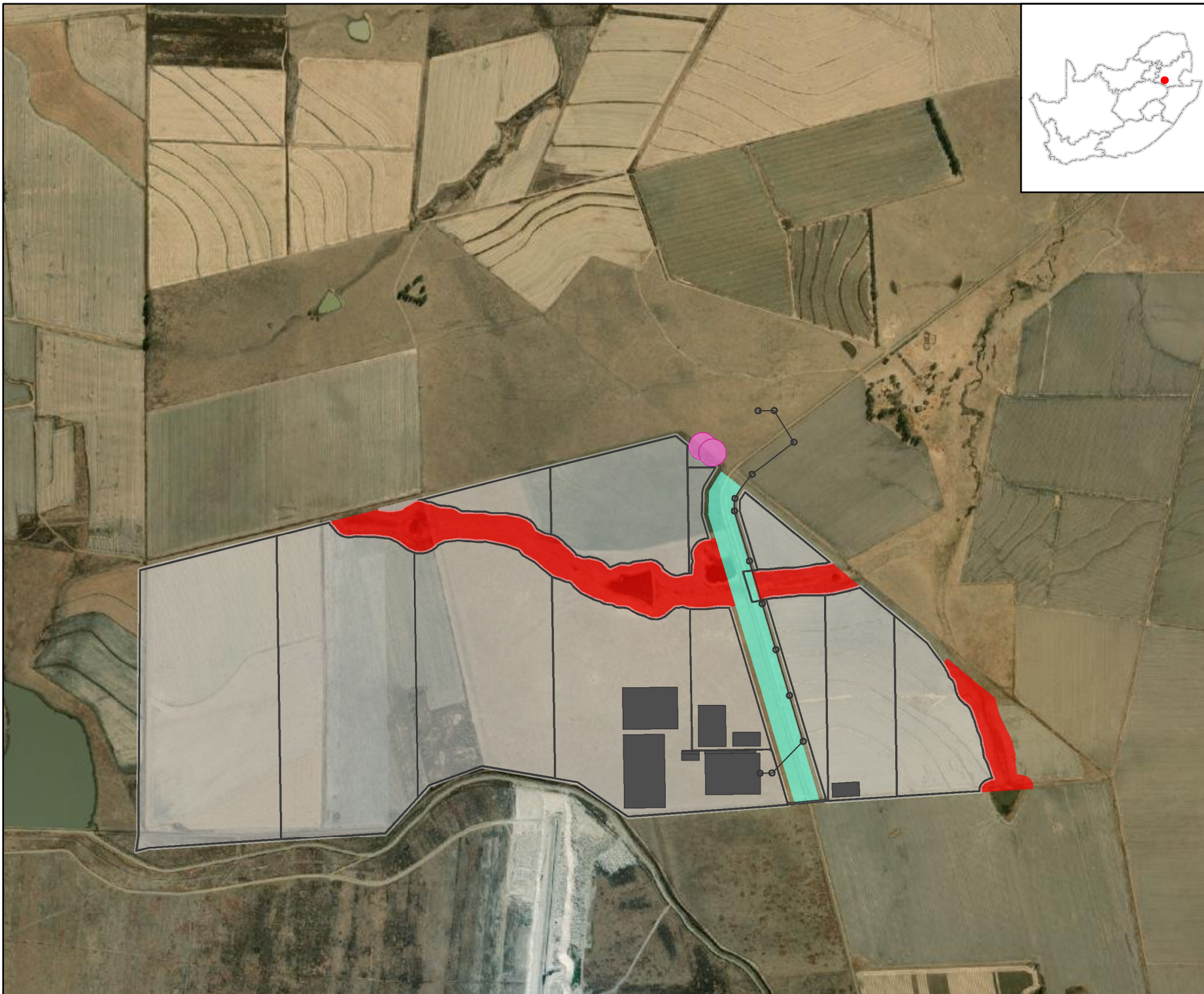
REV:

© COPYRIGHT RESERVED

The content of this document is privileged and confidential and may not be disclosed or reproduced without the express authorisation of the author, being 'WSP Environmental (Pty) Ltd'

Legend




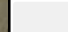


- | | | | | | |
|--|---|---|---|---|--|
| <i>Kniphofia typhoides</i> (NT) | Aquatics | Moderately High | Fauna | High | Visual |
| | Delineations | Intermediate | Intermediate | Low | Visual Glint and Glare Sensitivity Buffer (30m) |
| | 32 m (NEMA) Zone of Regulation | Low | | | Heritage |
| | 500 m (GN 509) Zone of Regulation | | | | Heritage Sites |
| | | | | | Heritage Sites buffer (50m) |

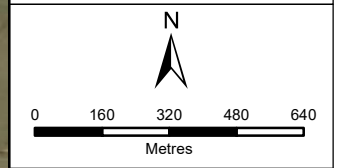


TOURNEE SOLAR PV CLUSTER

TOURNEE 2:
OPTIMISED LAYOUT
NO-GO ZONES

Legend

-  Tournee interconnection OHPL & pylons
-  No-Go Heritage Zone (inclusive of 50m Buffer)
-  Infrastructure Footprints
-  PV Development
-  No-Go Zones (inclusive of 32m Zone of Regulation Buffer)
-  Visual Glint and Glare Sensitivity Buffer (30m)



DISCLAIMER
The information on this figure was derived from various digital databases available to WSP Environmental (Pty) Ltd. All information is provided "as is" and it must be acknowledged that data, information, and maps are dynamic and in a constant state of maintenance, correction and update. WSP Environmental (Pty) Ltd cannot accept any responsibility for errors, omissions, or positional accuracy where it has not been directly responsible for the production of the data referenced. There are no warranties, expressed or implied, as to the use of this information, including the warranty of merchantability or fitness for a particular purpose. Notification of any errors will be appreciated.

wsp

WSP ENVIRONMENTAL (PTY) LTD
BUILDING C, KNIGHTSBRIDGE
33 SLOANE STREET, BRYANSTON
P O BOX 96867, SLOANE PARK 2152, RSA
Tel +27 (0)11 361 1360, Fax +27 (0)11 361 1381, wsp@wspgroup.co.za

DATA SOURCE:
SERVICE LAYER CREDITS: SOURCE: ESRI, MAXAR, EARTHSTAR GEOGRAPHICS, AND THE GIS USER COMMUNITY

PROJECTION: Hartebeesthoek94 Lo29		
PROJECT TITLE: TOURNEE EIA		
SCALE: 1:18 000	DRAWN BY: TS	
DATE: 2023/09/18	REVIEWED BY: AS	
FIGURE NO:	PROJECT NO: 41104569	REV:

© COPYRIGHT RESERVED
The content of this document is privileged and confidential and may not be disclosed or reproduced without the express authorisation of the author, being WSP Environmental (Pty) Ltd