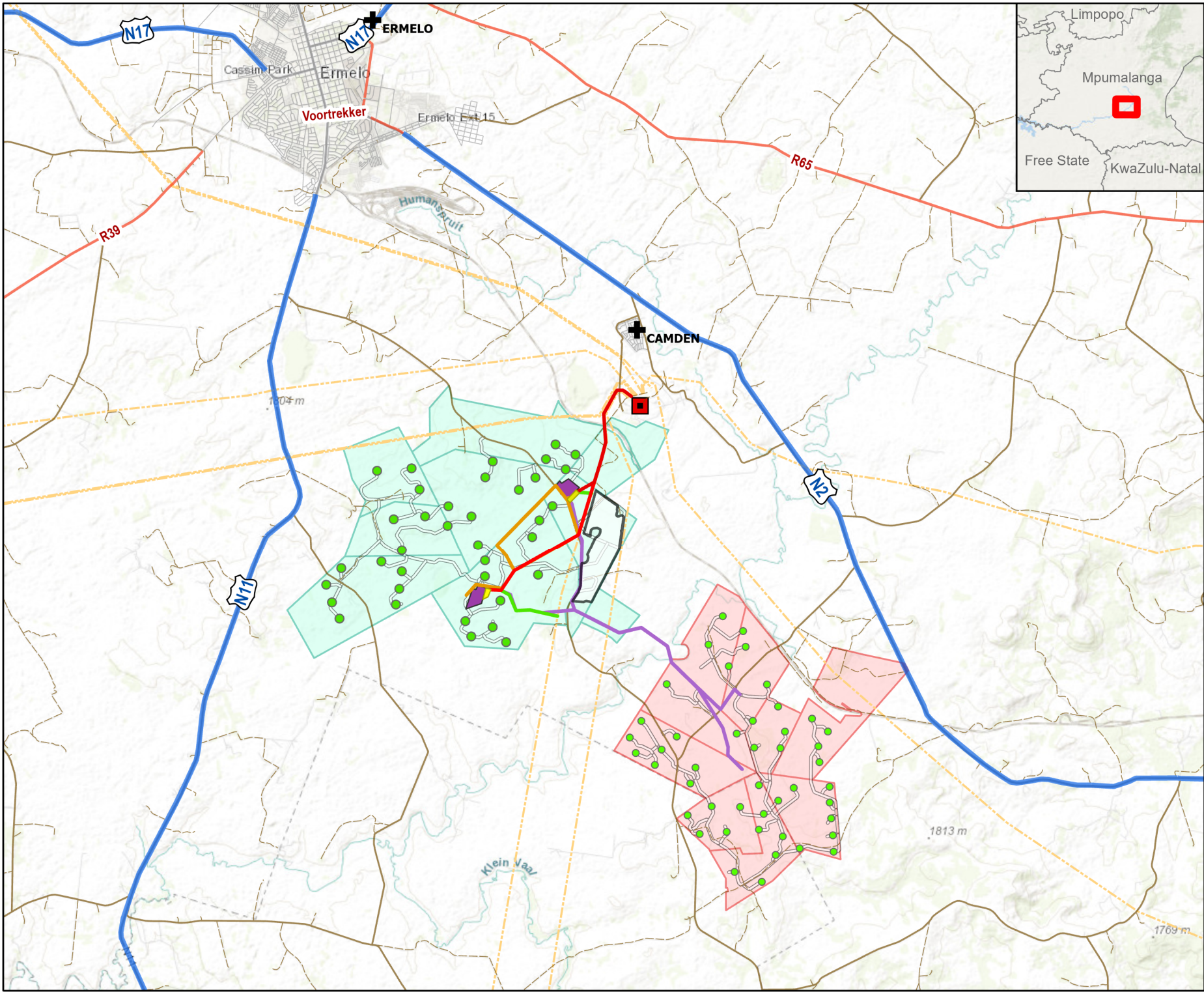


# APPENDIX

**E** MAPS





# Camden Renewable Energy Complex

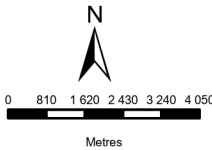
## LOCALITY MAP

### Legend

- Towns
- Turbine Locations
- Eskom Substation
- Existing Eskom Grid
- Up to 400kV grid connection Alternatives
- CD I WEF up to 132kV powerline alternatives
- CD II WEF up to 132kV powerline alternatives
- Camden I WEF
- Camden I Solar PV site extent (100MW)
- Eskom Collector & Switching SS Alternatives
- Ammonia & Hydrogen Plant Alternatives
- Camden II WEF

### Roads

- National freeway
- Arterial road
- Main road
- Secondary road
- Street
- Other
- Internal Roads



### DISCLAIMER

The information on this figure was derived from various digital databases available to WSP Environmental (Pty) Ltd. All information is provided "as is" and it must be acknowledged that data, information, and maps are dynamic and in a constant state of maintenance, correction and update. WSP Environmental (Pty) Ltd cannot accept any responsibility for errors, omissions, or positional accuracy where it has not been directly responsible for the production of the data referenced. There are no warranties, expressed or implied, as to the use of the information, including the warranty of merchantability or fitness for a particular purpose. Notification of any errors will be appreciated.



**WSP ENVIRONMENTAL (PTY) LTD**  
BUILDING C, KNIGHTSBRIDGE,  
33 SLOANE STREET, BRYANSTON  
P O BOX 98867, SLOANE PARK 2152, RSA  
Tel +27 (0)11 361 1381, Fax +27 (0)11 361 1381, [wsp@wspgroup.co.za](mailto:wsp@wspgroup.co.za)

**DATA SOURCE:**  
Service Layer Credits: World Ocean Base: Esri, GEBCO,  
DeLorme, NaturalVue  
World Topographic Map: Esri South Africa, Esri, HERE, Garmin,

**COORDINATE SYSTEM:**

**PROJECT TITLE:**

**CAMDEN RENEWABLE ENERGY COMPLEX**

**SCALE:** 1:160 000

**DRAWN BY:** TS

**DATE:** 2022/08/15

**REVIEWED BY:** AS

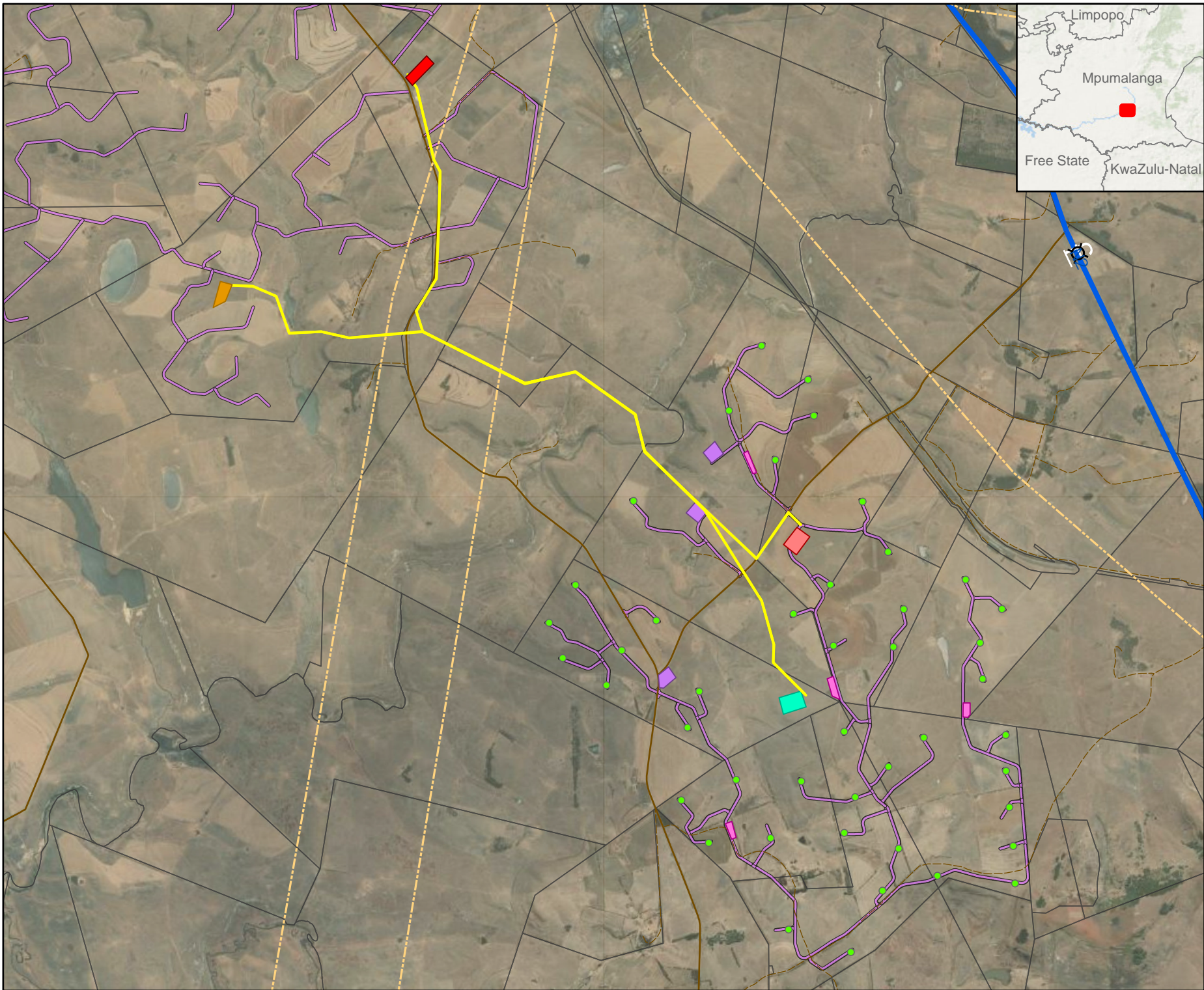
**FIGURE NO:**

**PROJECT NO:** 41103247

**REV:**

**© COPYRIGHT RESERVED**

The content of this document is privileged and confidential and may not be disclosed or reproduced without the express authorisation of the author, being "WSP Environmental (Pty) Ltd"



## CAMDEN 2 WEF

### LAYOUT MAP

#### Legend

- Turbine Locations
- Existing Eskom Grid
- Camden 2 OHL 132kV
- Construction camp & batching plants (4.5ha ea)
- SS & BESS 7ha Option 1
- SS & BESS 7ha Option 2 (Preferred)
- Temp Laydown Areas (2ha ea)
- Farm Portions
- Eskom Collector & Switching SS Alt2 (5ha) (Preferred)
- Eskom Collector & Switching SS Alt 1 (5ha)
- Roads
  - National freeway
  - Secondary road
  - Other
  - Internal Roads



0 350 700 1 050 1 400 1 750

Metres

#### DISCLAIMER

The information on this figure was derived from various digital databases available to WSP Environmental (Pty) Ltd. All information is provided "as is" and it must be acknowledged that data, information, and maps are dynamic and in a constant state of maintenance, correction and update. WSP Environmental (Pty) Ltd cannot accept any responsibility for errors, omissions, or positional accuracy where it has not been directly responsible for the production of the data referenced. There are no warranties, expressed or implied, as to the use of this information, including the warranty of merchantability or fitness for a particular purpose. Notification of any errors will be appreciated.



#### WSP ENVIRONMENTAL (PTY) LTD

BUILDING C, KNIGHTSBRIDGE,  
33 SLOANE STREET, BRYANSTON  
P O BOX 98867, SLOANE PARK 2152, RSA  
Tel +27 (0)11 361 1380, Fax +27 (0)11 361 1381, [wsp@wspgroup.co.za](mailto:wsp@wspgroup.co.za)

DATA SOURCE:  
Service Layer Credits: World Imagery: Earthstar Geographics  
World Ocean Base: Esri, GEBCO, DeLorme, NaturalVue

#### COORDINATE SYSTEM:

#### PROJECT TITLE:

CAMDEN RENEWABLE ENERGY COMPLEX

SCALE: 1:70 000

DRAWN BY: TS

DATE: 2022/08/12

REVIEWED BY: AS

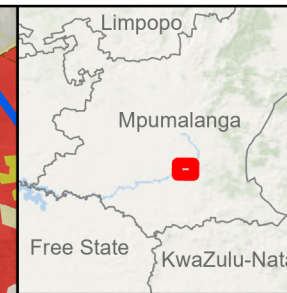
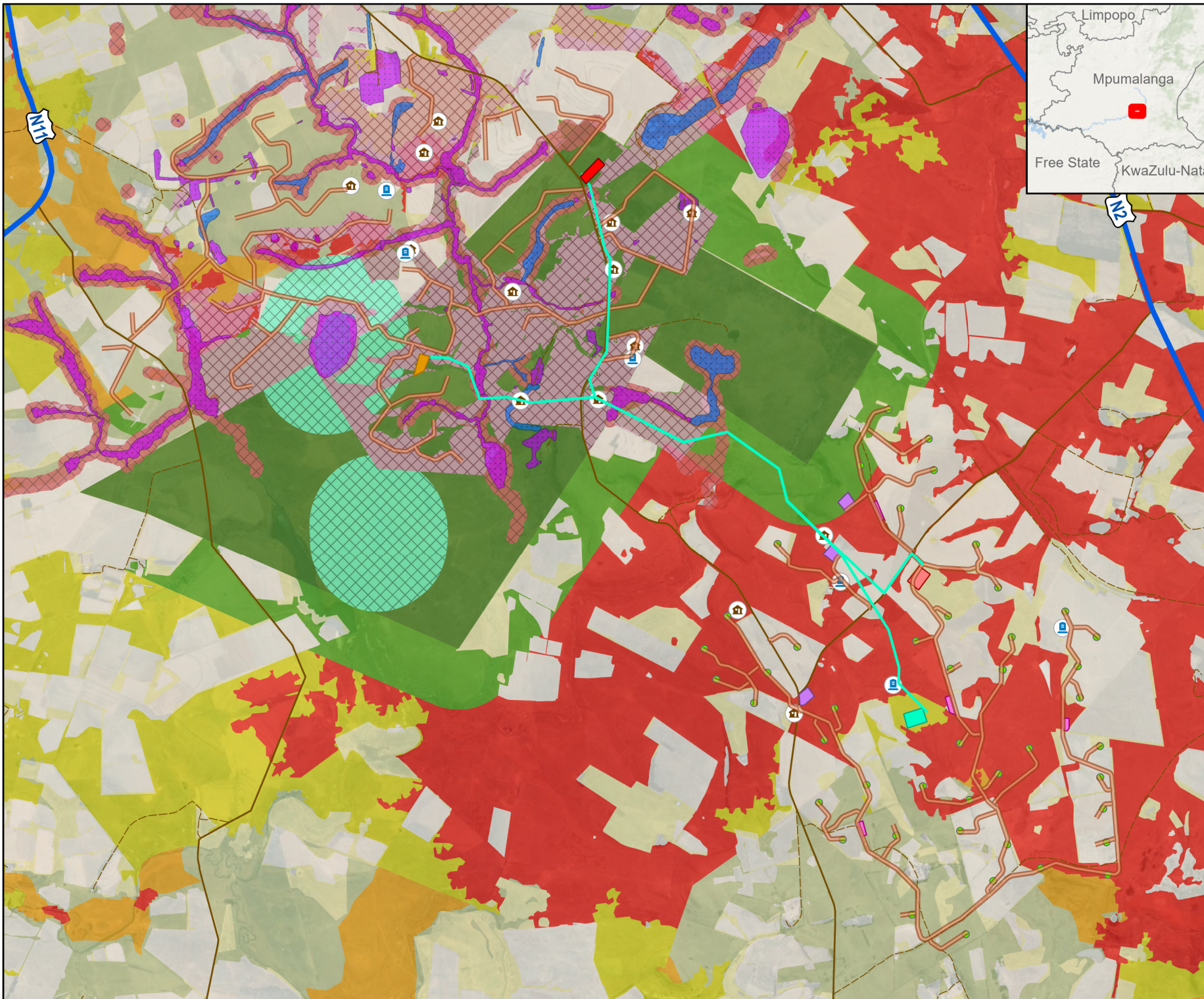
FIGURE NO:

PROJECT NO: 41103247

REV:

#### © COPYRIGHT RESERVED

The content of this document is privileged and confidential and may not be disclosed or reproduced without the express authorisation of the author, being "WSP Environmental (Pty) Ltd"



## CAMDEN 2 WEF

### SENSITIVITY MAP

#### Legend

- Turbine Locations
- Camden 2 OHL 132kV
- Construction camp & batching plants (4.5ha ea)
- SS & BESS 7ha Option 1
- SS & BESS 7ha Option 2 (Preferred)
- Eskom Collector & Switching SS Alt 1 (5ha)
- Eskom Collector & Switching SS Alt2 (5ha)(Preferred)
- Temp Laydown Areas (2ha ea)

#### Heritage

Burial Site

Structure

#### Bats - Sensitivities

Medium

High

#### Avifauna

High Sensitivity Grassland

High Sensitivity Pans

Very High Sensitivity Wetlands

#### Mpumalanga Biodiversity Sector Plan (2019)

PA National Parks & Nature Reserves

CBA Irreplaceable

CBA Optimal

ESA Local corridor

ESA Protected Area buffer

Other Natural Areas

Moderately modified- Old lands

Heavily modified



0 410 820 1230 1640 2050

Metres

#### DISCLAIMER

The information on this figure was derived from various digital databases available to WSP Environmental (Pty) Ltd. All information is provided "as is" and it must be acknowledged that data, information, and maps are dynamic and in a constant state of maintenance, correction and update. WSP Environmental (Pty) Ltd cannot accept any responsibility for errors, omissions, or positional accuracy where it has not been directly responsible for the production of the data referenced. There are no warranties, expressed or implied, as to the use of the information, including the warranty of merchantability or fitness for a particular purpose. Notification of any errors will be appreciated.



WSP ENVIRONMENTAL (PTY) LTD

BUILDING C, KNIGHTSBRIDGE,  
33 SLOANE STREET, BRYANSTON  
P O BOX 9867, SLOANE PARK 2152, RSA  
Tel +27 (0)11 361 1361, Fax +27 (0)11 361 1381, [wsp@wspgroup.co.za](mailto:wsp@wspgroup.co.za)

DATA SOURCE:  
Service Layer Credits: World Imagery: Earthstar Geographics  
World Ocean Base: Esri, GEBCO, DeLorme, NaturalVue

COORDINATE SYSTEM:

PROJECT TITLE:

CAMDEN RENEWABLE ENERGY COMPLEX

SCALE: 1:81 615

DRAWN BY: TS

DATE: 2022/08/15

REVIEWED BY: AS

FIGURE NO:

PROJECT NO: 41103247

REV:

© COPYRIGHT RESERVED

The content of this document is privileged and confidential and may not be disclosed or reproduced without the express authorisation of the author, being "WSP Environmental (Pty) Ltd"