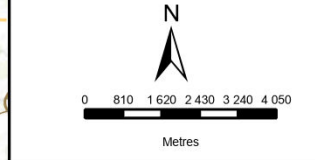


Camden Renewable Energy Complex

LOCALITY MAP

Legend

- + Towns
 - Turbine Locations
 - Eskom Substation
 - Camden I WEF
 - Camden II WEF
 - Existing Eskom Grid
 - Up to 400kV grid connection Alternatives
 - CD I WEF up to 132kV powerline alternatives
 - CD II WEF up to 132kV powerline alternatives
 - Camden I Solar PV site extent (100MW)
 - Eskom Collector & Switching SS Alternatives
 - Ammonia & Hydrogen Plant Alternatives
- Roads**
- National freeway
 - Arterial road
 - Main road
 - Secondary road
 - Street
 - Other
 - Internal Roads



DISCLAIMER
 The information on this figure was derived from various digital databases available to WSP Environmental (Pty) Ltd. All information is provided "as is" and it must be acknowledged that data, information and maps are dynamic and in a constant state of maintenance, correction and update. WSP Environmental (Pty) Ltd cannot accept any responsibility for errors, omissions, or positional accuracy where it has not been directly responsible for the production of the data referenced. There are no warranties, expressed or implied, as to the use of this information, including the warranty of merchantability or fitness for a particular purpose. Notification of any errors will be appreciated.

WSP ENVIRONMENTAL (PTY) LTD
 BUILDING C, KNIGHTSBRIDGE
 33 SLOANE STREET, BRYANSTON
 P O BOX 98887, SLOANE PARK 2152, RSA
 Tel +27 (0)11 281 1381; Fax +27 (0)11 281 1381; wsp@wspgroup.co.za

DATA SOURCE:
 Service Layer Credits: World Ocean Base: Esri, GEBCO, DeLorme, NaturalVue
 World Topographic Map: Esri South Africa, Esri, HERE, Garmin, USGS, NGA

COORDINATE SYSTEM:

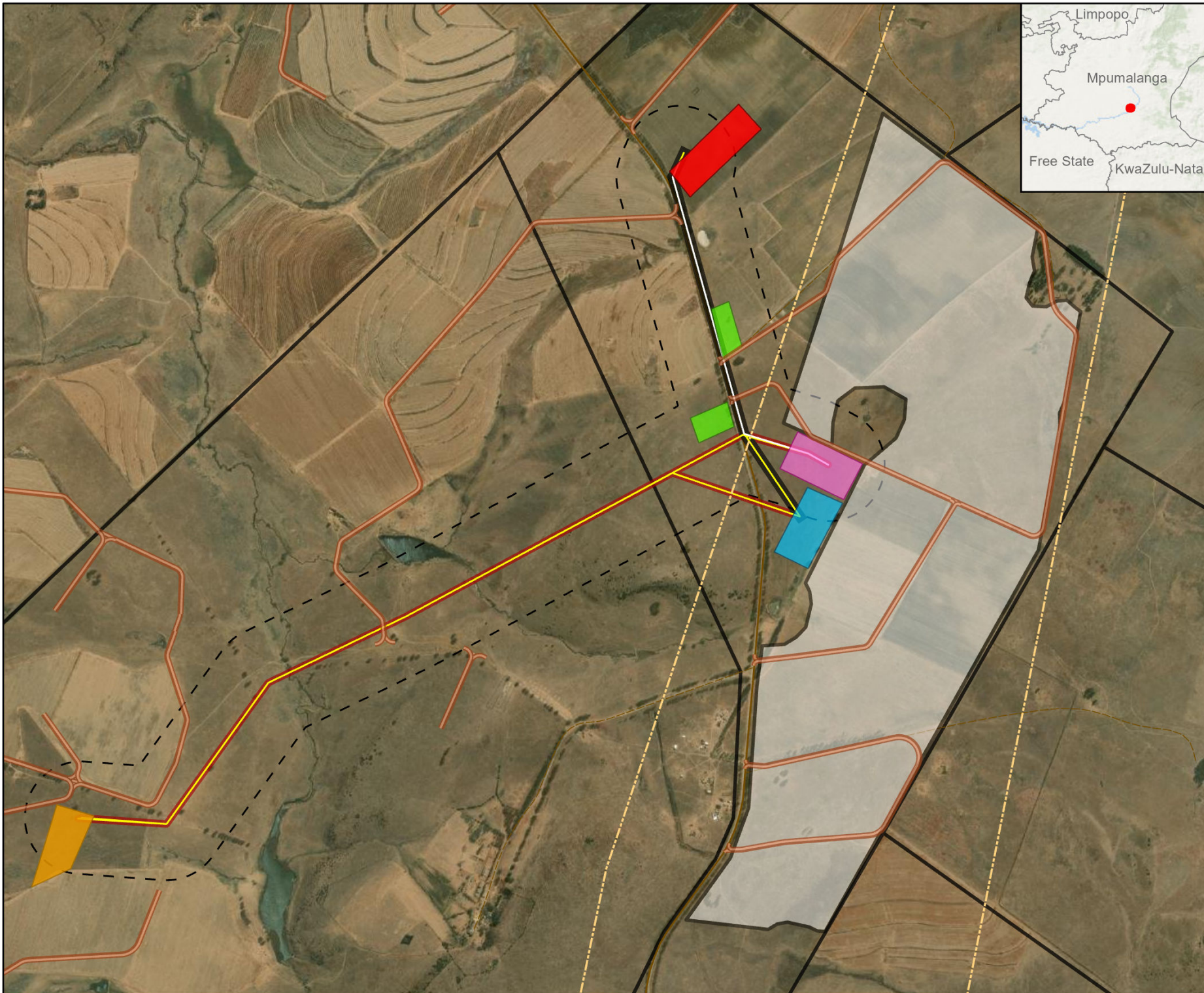
PROJECT TITLE:
 CAMDEN RENEWABLE ENERGY COMPLEX

SCALE: 1:160 000 **DRAWN BY:** TS

DATE: 2022/11/01 **REVIEWED BY:** AS

FIGURE NO: **PROJECT NO:** 41103247 **REV:**

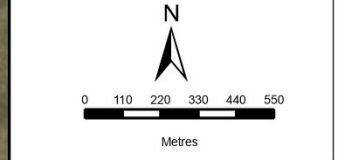
© COPYRIGHT RESERVED
 The content of this document is privileged and confidential and may not be disclosed or reproduced without the express authorisation of the author, being "WSP Environmental (Pty) Ltd"



CAMDEN 1 SEF

LAYOUT MAP

- Legend**
- Existing Eskom Grid
 - Camden I Solar PV site extent (100MW)
 - BESS & SS Alt1
 - BESS & SS Alt2 (Preferred)
 - Construction Camps
 - Collector & Switching SS Alt 1
 - Collector & Switching SS Alt2 (Preferred)
 - Farm Portions
 - Gridline Connection 250m corridor
 - Grid Connections:**
 - CD I Solar PV Grid up to 132kV - Alternative 2 (Preferred)
 - CD I Solar PV Grid up to 132kV - Alternative 1,3 & 4
 - Roads**
 - Secondary road
 - Other
 - Powerline Alternatives:**
 - Powerline (upto 132 kv)
 - Cable up to 33kV
 - Internal Roads



DISCLAIMER

The information on this figure was derived from various digital databases available to WSP Environmental (Pty) Ltd. All information is provided "as is" and it must be acknowledged that data, information, and maps are dynamic and in a constant state of maintenance, correction and update. WSP Environmental (Pty) Ltd cannot accept any responsibility for errors, omissions, or positional accuracy where it has not been directly responsible for the production of the data referenced. There are no warranties, expressed or implied, as to the use of this information, including the warranty of merchantability or fitness for a particular purpose. Notification of any errors will be appreciated.



WSP ENVIRONMENTAL (PTY) LTD
 BUILDING C, KNIGHTSBRIDGE
 33 SLOANE STREET, BRYANSTON
 P O BOX 98887, SLOANE PARK 2152, RSA
 Tel +27 (0)11 591 1361, Fax +27 (0)11 591 1351, wsp@wspgroup.co.za

DATA SOURCE:
 Service Layer Credits: World Ocean Base; Esri, GEBCO, DeLorme, NaturalVue, World Imagery; Maxar

COORDINATE SYSTEM:

PROJECT TITLE:
 CAMDEN RENEWABLE ENERGY COMPLEX

SCALE: 1:22 000 **DRAWN BY:** TS

DATE: 2022/11/01 **REVIEWED BY:** AS

FIGURE NO: **PROJECT NO:** 41103247 **REV:**

© COPYRIGHT RESERVED
 The content of this document is privileged and confidential and may not be disclosed or reproduced without the express authorisation of the author, being "WSP Environmental (Pty) Ltd"

Ecology Sensitivity

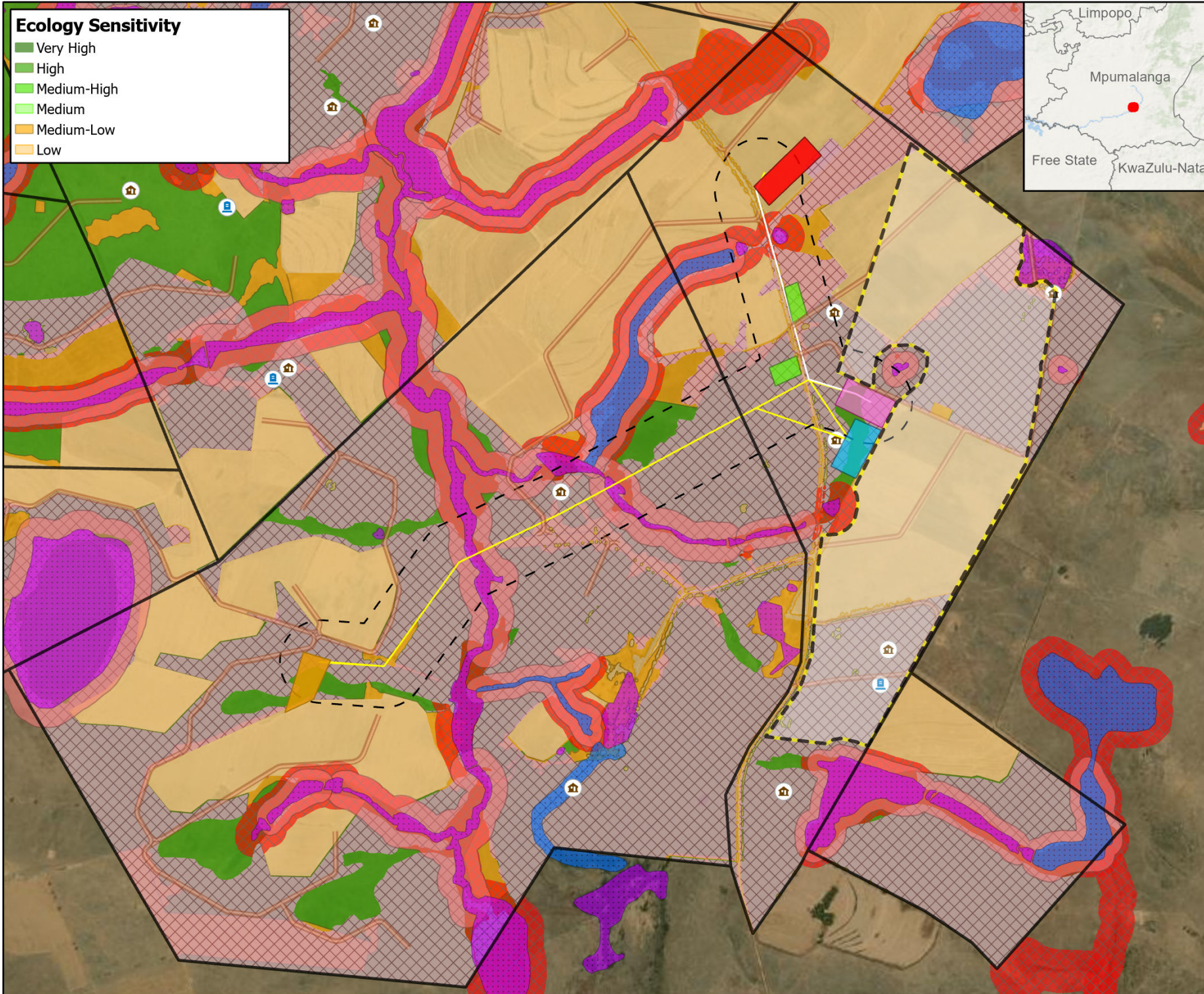
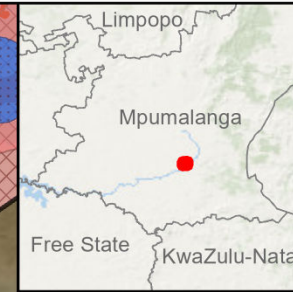
- Very High
- High
- Medium-High
- Medium
- Medium-Low
- Low

CAMDEN 1 SEF

SENSITIVITY MAP

Legend

- Internal Roads
- Farm Portions
- CD 1 Solar PV Grid up to 132kV - Alternative 2 (Preferred)
- CD 1 Solar PV Grid up to 132kV - Alternative 1,3 & 4
- Gridline Connection 250m corridor
- Collector & Switching SS Alt2 (Preferred)
- Collector & Switching SS Alt 1
- Camden 1 Solar PV site extent (100MW)
- BESS & SS Alt1
- BESS & SS Alt2 (Preferred)
- Construction Camps
- Heritage**
- Burial Site (incl. 30m buffer)
- Structure
- Bats - Sensitivities**
- Medium
- High
- Avifauna**
- High Sensitivity Grassland
- Very High Sensitivity Wetlands (No-Go)
- (Limited Infrastructure)
- Aquatic Sensitivity**
- Moderate
- Very High



Heritage

- Burial Site (incl. 30m buffer)

Structure

- Structure

Bats - Sensitivities

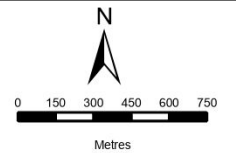
- Medium
- High

Avifauna

- High Sensitivity Grassland
- Very High Sensitivity Wetlands (No-Go)
- (Limited Infrastructure)

Aquatic Sensitivity

- Moderate
- Very High



DISCLAIMER

The information on this figure was derived from various digital databases available to WSP Environmental (Pty) Ltd. All information is provided "as is" and it must be acknowledged that data, information and maps are dynamic and in a constant state of maintenance, correction and update. WSP Environmental (Pty) Ltd cannot accept any responsibility for errors, omissions, or positional accuracy where it has not been directly responsible for the production of the data referenced. There are no warranties, expressed or implied, as to the use of this information, including the warranty of merchantability or fitness for a particular purpose. Notification of any errors will be appreciated.



WSP ENVIRONMENTAL (PTY) LTD
 BUILDING C, KNIGHTSBRIDGE,
 33 SLOANE STREET, BRYANSTON
 P O BOX 98867, SLOANE PARK 2152, RSA
 Tel +27 (0)11 981 1361, Fax +27 (0)11 981 1361, wsp@wspgroup.co.za

DATA SOURCE:
 Service Layer Credits: World Imagery: Earthstar Geographics
 World Ocean Base: Esri, GEBCO, DeLorme, NaturalVue

COORDINATE SYSTEM:

PROJECT TITLE:
 CAMDEN RENEWABLE ENERGY COMPLEX

SCALE: 1:30 000 **DRAWN BY:** TS

DATE: 2022/11/01 **REVIEWED BY:** AS

FIGURE NO: **PROJECT NO:** 41103247 **REV:**

© COPYRIGHT RESERVED
 The content of this document is privileged and confidential and may not be disclosed or reproduced without the express authorisation of the author, being "WSP Environmental (Pty) Ltd"

Mpumalanga Biodiversity Sector Plan (2019)

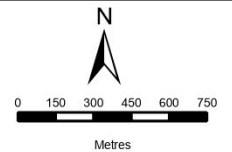
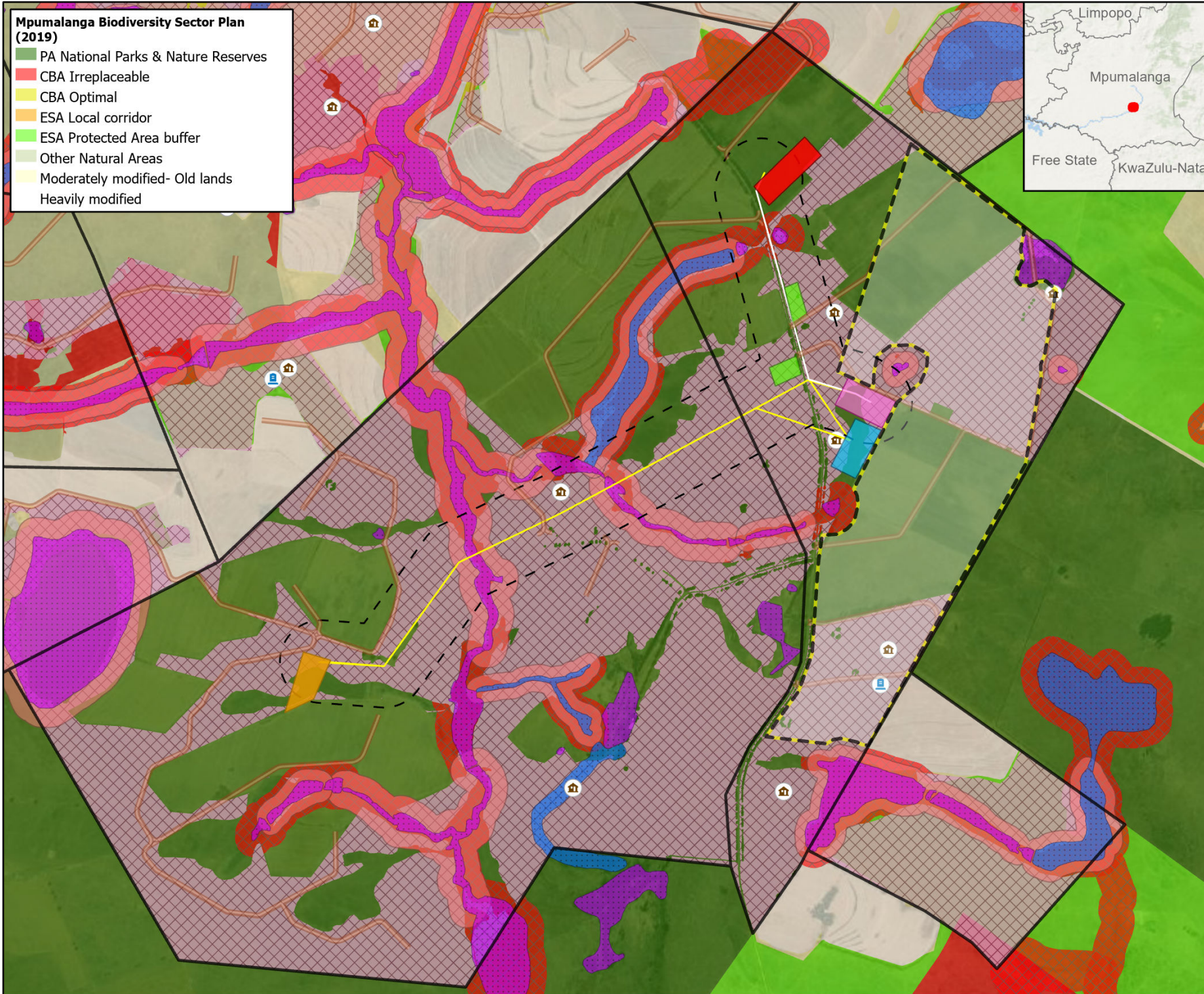
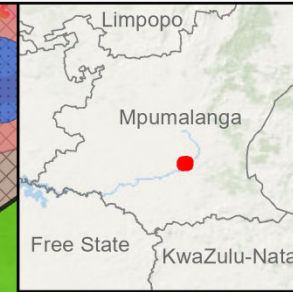
- PA National Parks & Nature Reserves
- CBA Irreplaceable
- CBA Optimal
- ESA Local corridor
- ESA Protected Area buffer
- Other Natural Areas
- Moderately modified- Old lands
- Heavily modified

CAMDEN 1 SEF

SENSITIVITY MAP

Legend

- Internal Roads
- Farm Portions
- CD 1 Solar PV Grid up to 132kV - Alternative 2 (Preferred)
- CD 1 Solar PV Grid up to 132kV - Alternative 1, 3 & 4
- Gridline Connection 250m corridor
- Collector & Switching SS Alt2 (Preferred)
- Collector & Switching SS Alt 1
- Camden I Solar PV site extent (100MW)
- BESS & SS Alt1
- BESS & SS Alt2 (Preferred)
- Construction Camps
- Heritage**
- Burial Site (incl. 30m buffer)
- Structure
- Bats - Sensitivities**
- Medium
- High
- Avifauna**
- High Sensitivity Grassland
- Very High Sensitivity Wetlands (No-Go)
- (Limited Infrastructure)
- Aquatic Sensitivity**
- Moderate
- Very High



DISCLAIMER
 The information on this figure was derived from various digital databases available to WSP Environmental (Pty) Ltd. All information is provided "as is" and it must be acknowledged that data, information and maps are dynamic and in a constant state of maintenance, correction and update. WSP Environmental (Pty) Ltd cannot accept any responsibility for errors, omissions, or positional accuracy where it has not been directly responsible for the production of the data referenced. There are no warranties, expressed or implied, as to the use of this information, including the warranty of merchantability or fitness for a particular purpose. Notification of any errors will be appreciated.



WSP ENVIRONMENTAL (PTY) LTD
 BUILDING C, KNIGHTSBRIDGE
 33 SLOANE STREET, BRYANSTON
 P O BOX 98887, SLOANE PARK 2152, RSA
 Tel +27 (0)11 981 1361, Fax +27 (0)11 981 1361, wsp@wspgroup.co.za

DATA SOURCE:
 Service Layer Credits: World Ocean Base; Esri, GEBCO, DeLorme, NaturalVue, World Imagery; Maxar

COORDINATE SYSTEM:

PROJECT TITLE:
 CAMDEN RENEWABLE ENERGY COMPLEX

SCALE: 1:30 000 **DRAWN BY:** TS

DATE: 2022/11/01 **REVIEWED BY:** AS

FIGURE NO: **PROJECT NO:** 41103247 **REV:**

© COPYRIGHT RESERVED
 The content of this document is privileged and confidential and may not be disclosed or reproduced without the express authorisation of the author, being "WSP Environmental (Pty) Ltd"