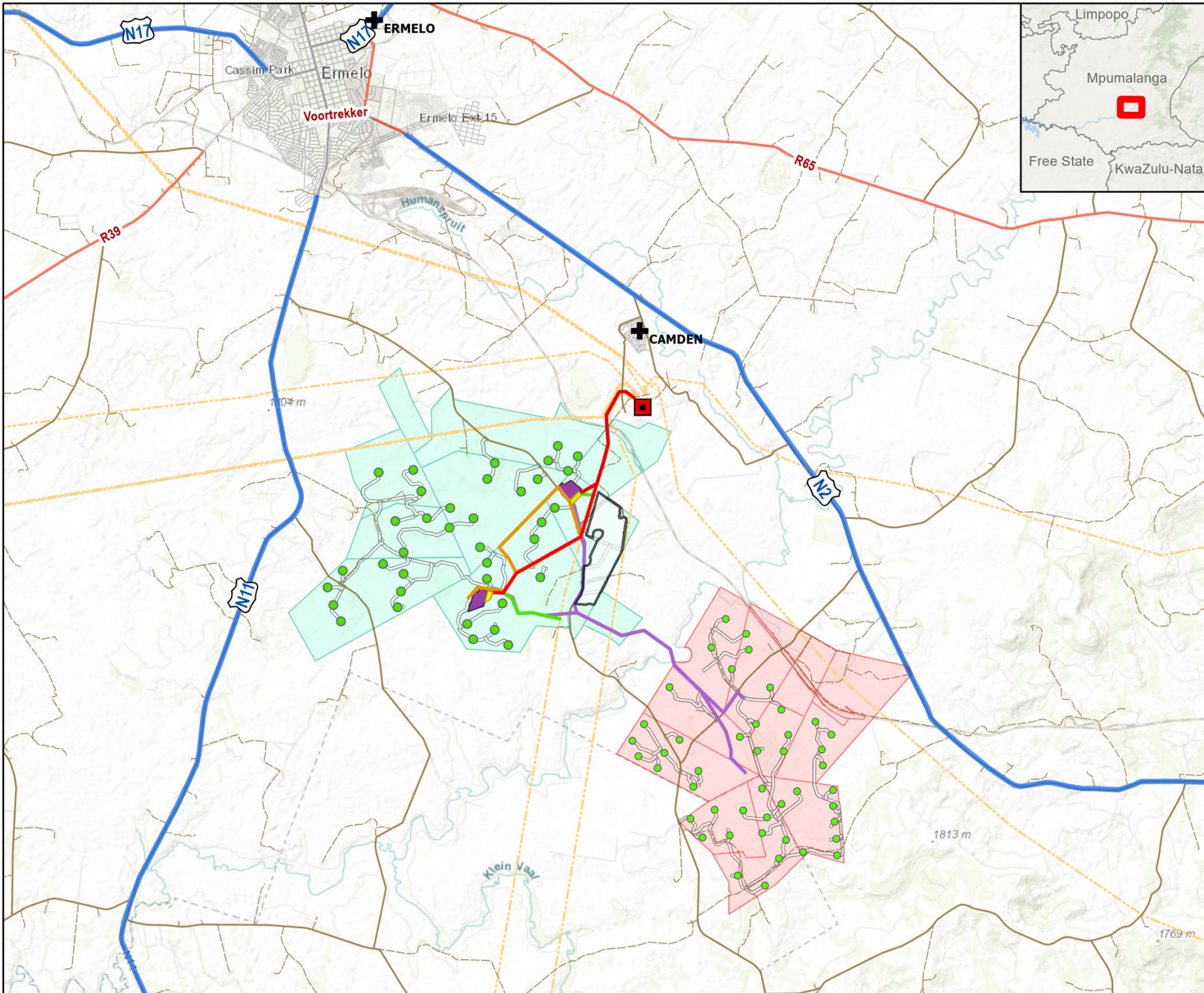


APPENDIX

E MAPS



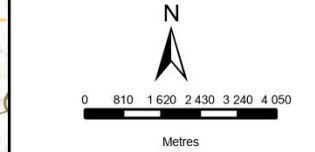


Camden Renewable Energy Complex

LOCALITY MAP

Legend

- + Towns
- Turbine Locations
- Eskom Substation
- Camden I WEF
- Camden II WEF
- Existing Eskom Grid
- Up to 400kV grid connection Alternatives
- CD I WEF up to 132kV powerline alternatives
- CD II WEF up to 132kV powerline alternatives
- Camden I Solar PV site extent (100MW)
- Eskom Collector & Switching SS Alternatives
- Ammonia & Hydrogen Plant Alternatives
- Roads**
- National freeway
- Arterial road
- Main road
- Secondary road
- Street
- Other
- Internal Roads



DISCLAIMER
 The information on this figure was derived from various digital databases available to WSP Environmental (Pty) Ltd. All information is provided "as is" and it must be acknowledged that data, information and maps are dynamic and in a constant state of maintenance, correction and update. WSP Environmental (Pty) Ltd cannot accept any responsibility for errors, omissions, or positional accuracy where it has not been directly responsible for the production of the data referenced. There are no warranties, expressed or implied, as to the use of this information, including the warranty of merchantability or fitness for a particular purpose. Notification of any errors will be appreciated.

wsp

WSP ENVIRONMENTAL (PTY) LTD
 BUILDING C, KNIGHTSBRIDGE
 33 SLOANE STREET, BRYANSTON
 P O BOX 98887, SLOANE PARK 2152, RSA
 Tel +27 (0)11 281 1381; Fax +27 (0)11 281 1381; wsp@wspgroup.co.za

DATA SOURCE:
 Service Layer Credits: World Ocean Base: Esri, GEBCO, DeLorme, NaturalVue
 World Topographic Map: Esri South Africa, Esri, HERE, Garmin, USGS, NGA

COORDINATE SYSTEM:

PROJECT TITLE:
 CAMDEN RENEWABLE ENERGY COMPLEX

SCALE: 1:160 000 **DRAWN BY:** TS

DATE: 2022/11/01 **REVIEWED BY:** AS

FIGURE NO: **PROJECT NO:** 41103247 **REV:**

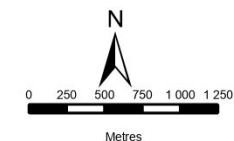
© COPYRIGHT RESERVED
 The content of this document is privileged and confidential and may not be disclosed or reproduced without the express authorisation of the author, being "WSP Environmental (Pty) Ltd"

CAMDEN 1 WEF

LAYOUT MAP

Legend

- Turbine Locations
- Eskom Substation
- Farm Portions
- Existing Eskom Grid
- Construction camp, Batching plant & Concrete tower yard
- SS & BESS, incl. Eskom SS Alt1
- SS & BESS, incl. Eskom SS Alt2 (Preferred)
- Temp Laydown Areas
- Common Collector & Switching SS Alt2 (Preferred)
- Common Collector & Switching SS Alt 1
- Substation Buffers (250m)
- WEF Grid up to 132kV Alternatives (incl. 250m corridor)**
- Alternative 1 (Preferred)
- Alternative 2
- Alternative 3
- Alternative 4
- Roads**
- National freeway
- Secondary road
- Other
- Internal Roads



DISCLAIMER

The information on this figure was derived from various digital databases available to WSP Environmental (Pty) Ltd. All information is provided "as is" and it must be acknowledged that data, information, and maps are dynamic and in a constant state of maintenance, correction and update. WSP Environmental (Pty) Ltd cannot accept any responsibility for errors, omissions, or positional accuracy where it has not been directly responsible for the production of the data referenced. There are no warranties, expressed or implied, as to the use of this information, including the warranty of merchantability or fitness for a particular purpose. Notification of any errors will be appreciated.



WSP ENVIRONMENTAL (PTY) LTD
 BUILDING C, KNIGHTSBRIDGE,
 33 SLOANE STREET, BRYANSTON
 P O BOX 98887, SLOANE PARK 2152, RSA
 Tel +27 (0)11 981 1361, Fax +27 (0)11 981 1361, wsp@wspgroup.co.za

DATA SOURCE:
 Service Layer Credits: World Imagery: Earthstar Geographics
 World Ocean Base: Esri, GEBCO, DeLorme, NaturalVue

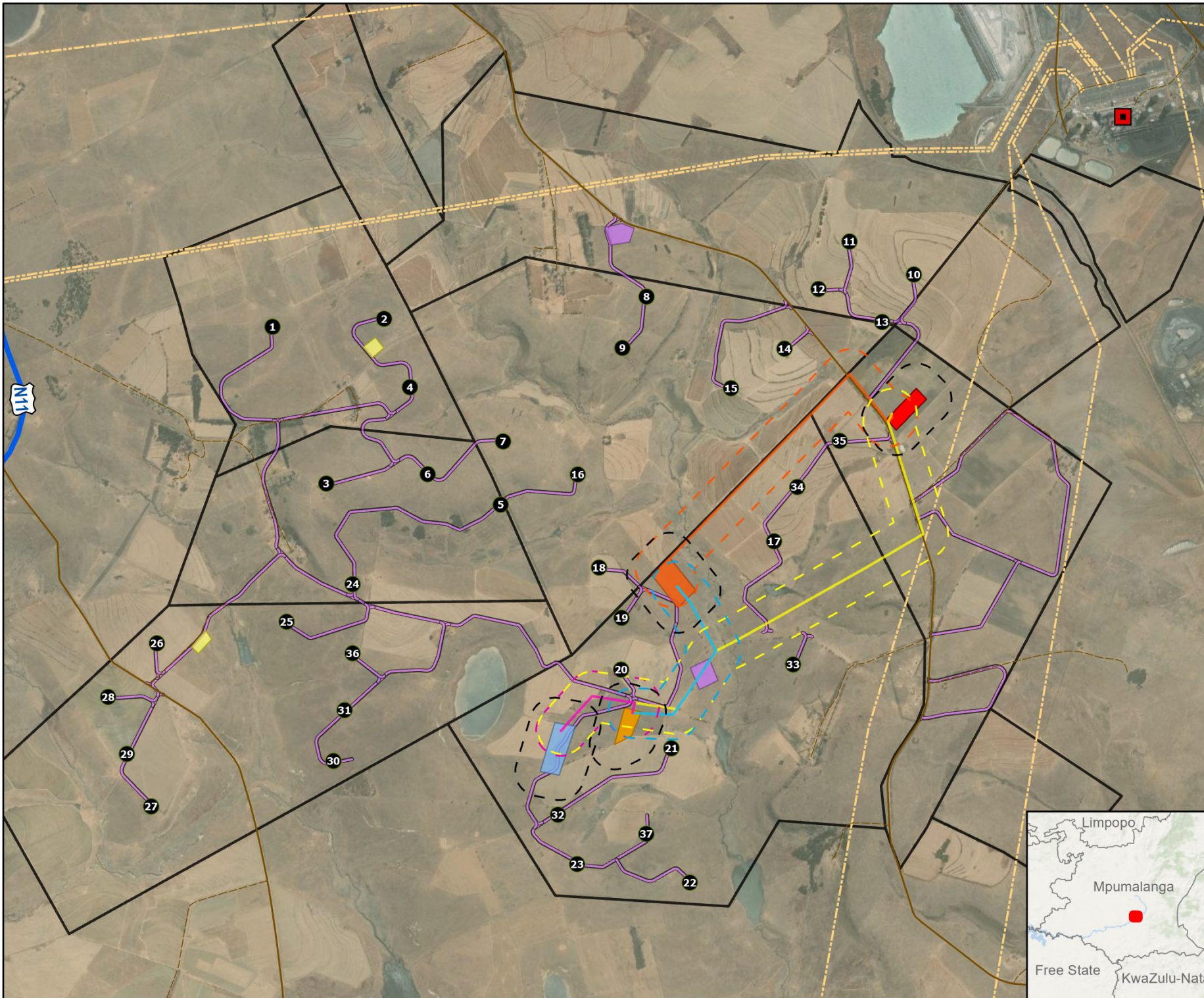
COORDINATE SYSTEM:

PROJECT TITLE:
 CAMDEN RENEWABLE ENERGY COMPLEX

SCALE: 1:50 000 DRAWN BY: TS
 DATE: 2022/11/01 REVIEWED BY: AS

FIGURE NO: PROJECT NO: 41103247 REV:

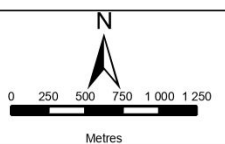
© COPYRIGHT RESERVED
 The content of this document is privileged and confidential and may not be disclosed or reproduced without the express authorisation of the author, being "WSP Environmental (Pty) Ltd"





CAMDEN 1 WEF SENSITIVITY MAP

- Legend**
- Turbine Locations
 - Internal Roads
 - Farm Portions
 - Construction camp, Batching plant & Concrete tower yard
 - SS & BESS, incl. Eskom SS Alt1
 - SS & BESS, incl. Eskom SS Alt2 (Preferred)
 - Temp Laydown Areas
 - Common Collector & Switching SS Alt 1
 - Common Collector & Switching SS Alt2 (Preferred)
- WEF Grid up to 132kV Alternatives**
- Alternative 1 (Preferred)
 - Alternative 2
 - Alternative 3
 - Alternative 4
- Heritage**
- Burial Site
 - Structure
- Bats - Sensitivities**
- Medium
 - High
 - Medium 150m Buffer
 - High 200m Buffer
- Avifauna**
- High Sensitivity Grassland
 - High Sensitivity Pans
 - Very High Sensitivity Wetlands (No-Go)



DISCLAIMER
 The information on this figure was derived from various digital databases available to WSP Environmental (Pty) Ltd. All information is provided "as is" and it must be acknowledged that data, information and maps are dynamic and in a constant state of maintenance, correction and update. WSP Environmental (Pty) Ltd cannot accept any responsibility for errors, omissions, or positional accuracy where it has not been directly responsible for the production of the data referenced. There are no warranties, expressed or implied, as to the use of this information, including the warranty of merchantability or fitness for a particular purpose. Notification of any errors will be appreciated.



WSP ENVIRONMENTAL (PTY) LTD
 BUILDING C, KNIGHTSBRIDGE
 33 SLOANE STREET, BRYANSTON
 P O BOX 98887, SLOANE PARK 2152, RSA
 Tel +27 (0)11 591 1360, Fax +27 (0)11 591 1361, wsp@wspgroup.co.za

DATA SOURCE:
 Service Layer Credits: World Ocean Base; Esri, GEBCO, DeLorme, NaturalVue, World Imagery; Maxar

COORDINATE SYSTEM:

PROJECT TITLE:
 CAMDEN RENEWABLE ENERGY COMPLEX

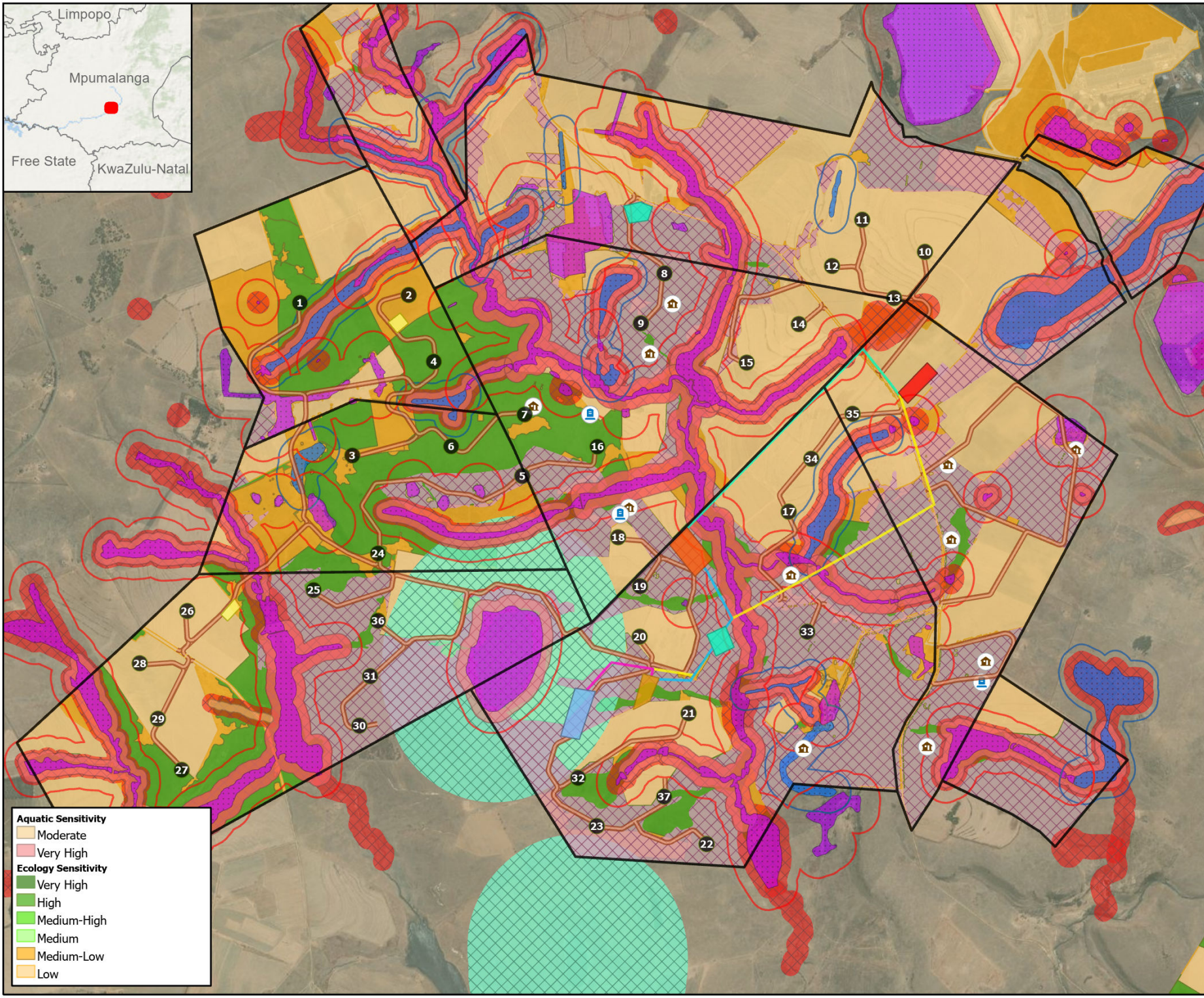
SCALE: 1:51 000 **DRAWN BY:** TS

DATE: 2022/11/01 **REVIEWED BY:** AS

FIGURE NO: **PROJECT NO:** 41103247 **REV:**

© COPYRIGHT RESERVED
 The content of this document is privileged and confidential and may not be disclosed or reproduced without the express authorisation of the author, being "WSP Environmental (Pty) Ltd"

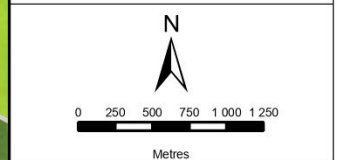
- Aquatic Sensitivity**
- Moderate
 - Very High
- Ecology Sensitivity**
- Very High
 - High
 - Medium-High
 - Medium
 - Medium-Low
 - Low





CAMDEN 1 WEF SENSITIVITY MAP

- Legend**
- Turbine Locations
 - Internal Roads
 - ▭ Farm Portions
 - Construction camp, Batching plant & Concrete tower yard
 - SS & BESS, incl. Eskom SS Alt1
 - SS & BESS, incl. Eskom SS Alt2 (Preferred)
 - Temp Laydown Areas
 - Common Collector & Switching SS Alt 1
 - Common Collector & Switching SS Alt2 (Preferred)
- WEF Grid up to 132kV Alternatives**
- Alternative 1 (Preferred)
 - Alternative 2
 - Alternative 3
 - Alternative 4
- Heritage**
- Burial Site
 - Structure
- Bats - Sensitivities**
- Medium
 - High
 - Medium 150m Buffer
 - High 200m Buffer
- Avifauna**
- High Sensitivity Grassland
 - High Sensitivity Pans
 - Very High Sensitivity Wetlands (No-Go)
- Aquatic Sensitivity**
- Moderate
 - Very High



DISCLAIMER

The information on this figure was derived from various digital databases available to WSP Environmental (Pty) Ltd. All information is provided "as is" and it must be acknowledged that data, information, and maps are dynamic and in a constant state of maintenance, correction and update. WSP Environmental (Pty) Ltd cannot accept any responsibility for errors, omissions, or positional accuracy where it has not been directly responsible for the production of the data referenced. There are no warranties, expressed or implied, as to the use of this information, including the warranty of merchantability or fitness for a particular purpose. Notification of any errors will be appreciated.



DATA SOURCE:
 Service Layer Credits: World Ocean Base; Esri, GEBCO, DeLorme, NaturalVue, World Imagery; Maxar

COORDINATE SYSTEM:

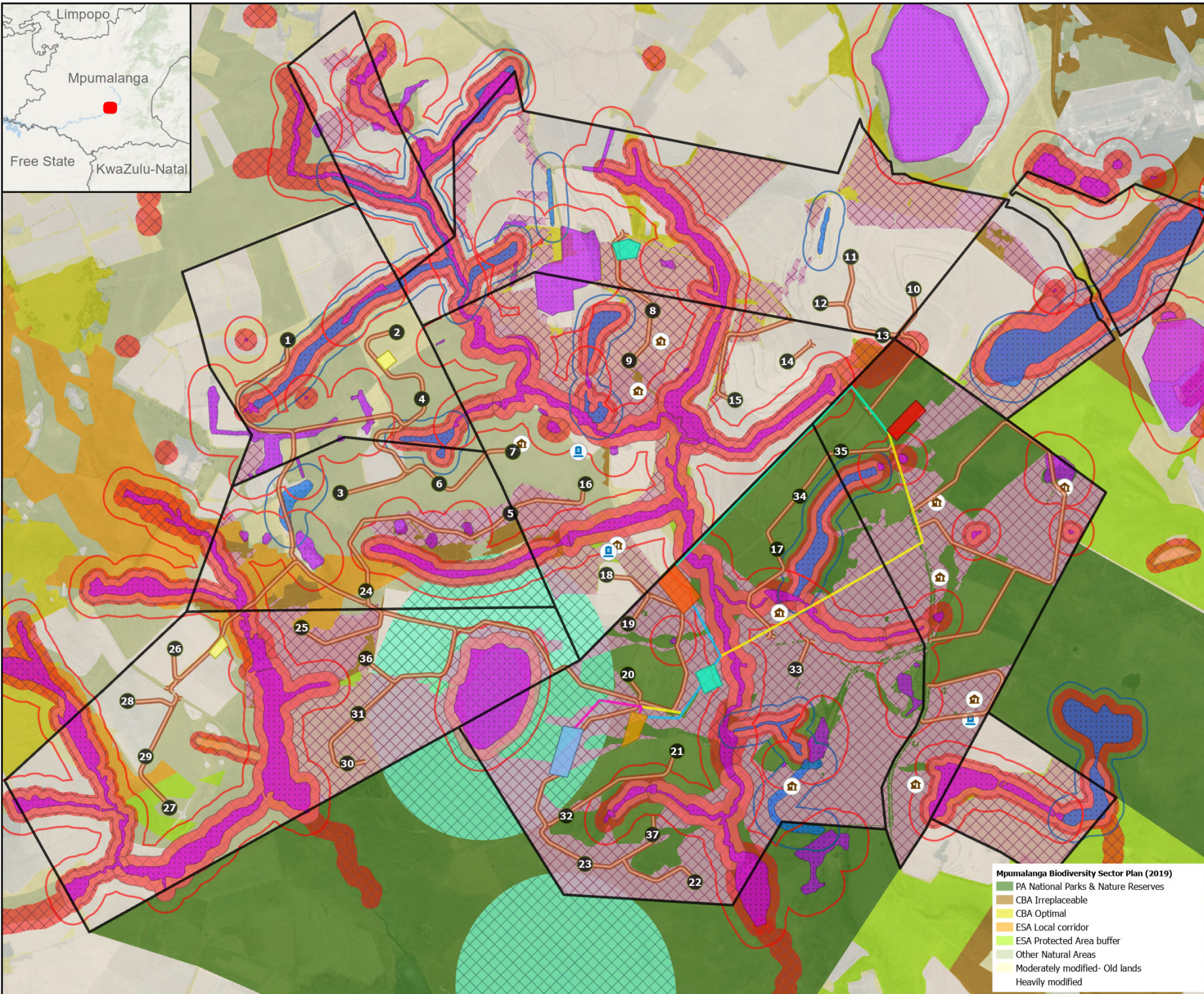
PROJECT TITLE:
 CAMDEN RENEWABLE ENERGY COMPLEX

SCALE: 1:51 000 **DRAWN BY:** TS

DATE: 2022/11/01 **REVIEWED BY:** AS

FIGURE NO: **PROJECT NO:** 41103247 **REV:**

© COPYRIGHT RESERVED
 The content of this document is privileged and confidential and may not be disclosed or reproduced without the express authorisation of the author, being "WSP Environmental (Pty) Ltd"

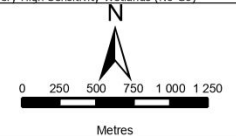


- Mpumalanga Biodiversity Sector Plan (2019)**
- PA National Parks & Nature Reserves
 - CBA Irreplaceable
 - CBA Optimal
 - ESA Local corridor
 - ESA Protected Area buffer
 - Other Natural Areas
 - Moderately modified- Old lands
 - Heavily modified



CAMDEN 1 WEF SENSITIVITY MAP

- Legend**
- Turbine Locations
 - ★ Martial Eagle Nest
 - Martial Eagle Nest Buffer (5km No Turbine Exclusion Zone)
 - Internal Roads
 - ▭ Farm Portions
 - Construction camp, Batching plant & Concrete tower yard
 - SS & BESS, incl. Eskom SS Alt1
 - SS & BESS, incl. Eskom SS Alt2 (Preferred)
 - Temp Laydown Areas
 - Common Collector & Switching SS Alt 1
 - Common Collector & Switching SS Alt2 (Preferred)
 - WEF Grid up to 132kV Alternatives**
 - Alternative 1 (Preferred)
 - Alternative 2
 - Alternative 3
 - Alternative 4
 - Heritage**
 - Burial Site
 - Structure
 - Bats - Sensitivities**
 - Medium
 - High
 - Medium 150m Buffer
 - High 200m Buffer
 - Avifauna**
 - High Sensitivity Grassland
 - High Sensitivity Pans
 - Very High Sensitivity Wetlands (No-Go)



DISCLAIMER
 The information on this figure was derived from various digital databases available to WSP Environmental (Pty) Ltd. All information is provided "as is" and it must be acknowledged that data, information, and maps are dynamic and in a constant state of maintenance, correction and update. WSP Environmental (Pty) Ltd cannot accept any responsibility for errors, omissions, or positional accuracy where it has not been directly responsible for the production of the data referenced. There are no warranties, expressed or implied, as to the use of this information, including the warranty of merchantability or fitness for a particular purpose. Notification of any errors will be appreciated.



WSP ENVIRONMENTAL (PTY) LTD
 BUILDING C, KNIGHTSBRIDGE,
 33 SLOANE STREET, BRYANSTON
 P O BOX 98887, SLOANE PARK 2152, RSA
 Tel +27 (0)11 581 1350, Fax +27 (0)11 581 1351, wsp@wspgroup.co.za

DATA SOURCE:
 Service Layer Credits: World Ocean Base; Esri, GEBCO, DeLorme, NaturalVue, World Imagery; Maxar

COORDINATE SYSTEM:

PROJECT TITLE:
 CAMDEN RENEWABLE ENERGY COMPLEX

SCALE: 1:51 000 **DRAWN BY:** TS
DATE: 2022/11/01 **REVIEWED BY:** AS

FIGURE NO: **PROJECT NO:** 41103247 **REV:**

© COPYRIGHT RESERVED
 The content of this document is privileged and confidential and may not be disclosed or reproduced without the express authorisation of the author, being "WSP Environmental (Pty) Ltd"

- Mpumalanga Biodiversity Sector Plan (2019)**
- PA National Parks & Nature Reserves
 - CBA Irreplaceable
 - CBA Optimal
 - ESA Local corridor
 - ESA Protected Area buffer
 - Other Natural Areas
 - Moderately modified- Old lands
 - Heavily modified
 - Aquatic Sensitivity**
 - Moderate
 - Very High

