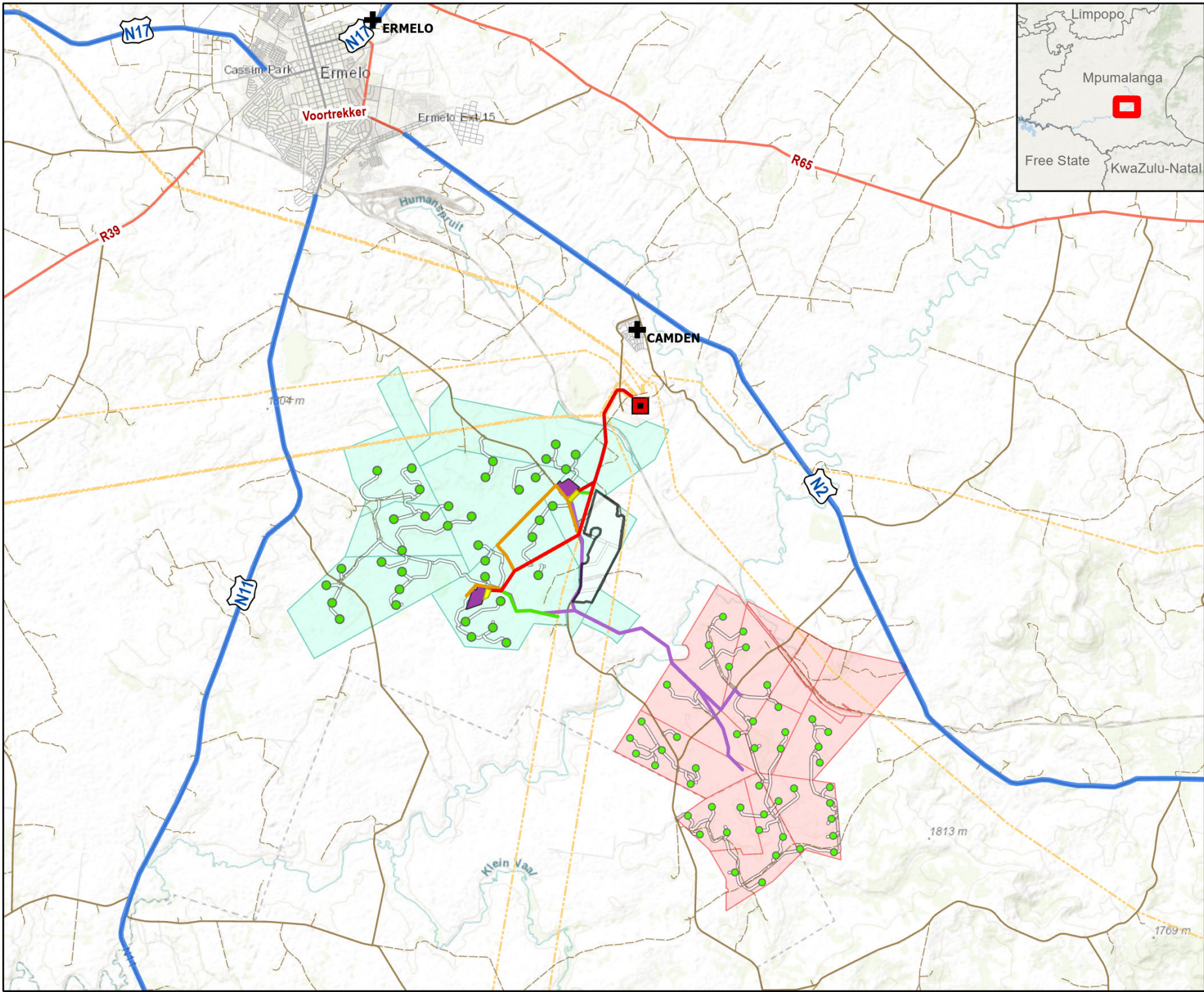


APPENDIX

E MAPS





Camden Renewable Energy Complex

LOCALITY MAP

Legend

- Towns
- Turbine Locations
- Eskom Substation
- Camden I WEF
- Camden II WEF
- Existing Eskom Grid
- Up to 400kV grid connection Alternatives
- CD I WEF up to 132kV powerline alternatives
- CD II WEF up to 132kV powerline alternatives
- Camden I Solar PV site extent (100MW)
- Eskom Collector & Switching SS Alternatives
- Ammonia & Hydrogen Plant Alternatives
- Roads**
 - National freeway
 - Arterial road
 - Main road
 - Secondary road
 - Street
 - Other
 - Internal Roads

DISCLAIMER

The information on this figure was derived from various digital databases available to WSP Environmental (Pty) Ltd. All information is provided "as is" and it must be acknowledged that data, information, and maps are dynamic and in a constant state of maintenance, correction and update. WSP Environmental (Pty) Ltd cannot accept any responsibility for errors, omissions, or positional accuracy where it has not been directly responsible for the production of the data referenced. There are no warranties, expressed or implied, as to the use of this information, including the warranty of merchantability or fitness for a particular purpose. Notification of any errors will be appreciated.



WSP ENVIRONMENTAL (PTY) LTD
BUILDING C, KNIGHTSBIDGE
33 SLOANE STREET, BRYANSTON
P O BOX 98887, SLOANE PARK 2152, RSA
Tel +27 (0)11 281 1381, Fax +27 (0)11 281 1381, wsp@wspgroup.co.za

DATA SOURCE:
Service Layer Credits: World Ocean Base: Esri, GEBCO, DeLorme, NaturalVue
World Topographic Map: Esri South Africa, Esri, HERE, Garmin, USGS, NGA

COORDINATE SYSTEM:

PROJECT TITLE:

CAMDEN RENEWABLE ENERGY COMPLEX

SCALE: 1:160 000

DRAWN BY: TS

DATE: 2022/11/01

REVIEWED BY: AS

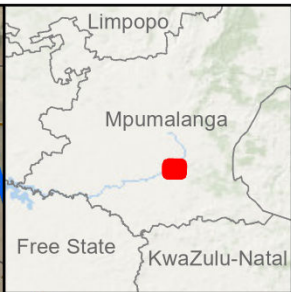
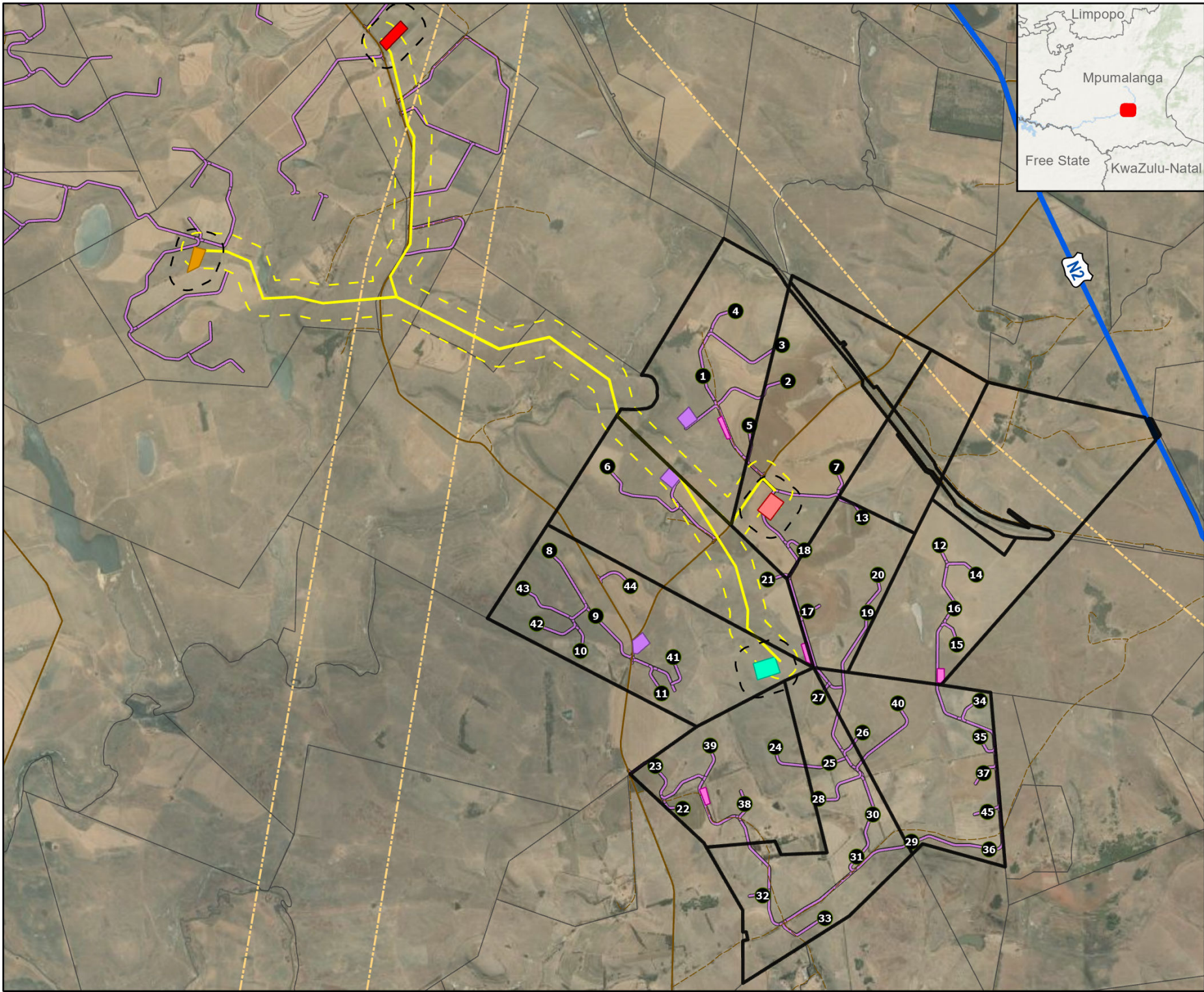
FIGURE NO:

PROJECT NO: 41103247

REV:

© COPYRIGHT RESERVED

The content of this document is privileged and confidential and may not be disclosed or reproduced without the express authorisation of the author, being "WSP Environmental (Pty) Ltd"

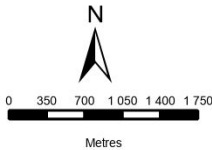


CAMDEN 2 WEF


LAYOUT MAP

Legend

- Turbine Locations
- ▬ Farm Portions
- Existing Eskom Grid
- Camden 2 OHL 132kV (Alternatives)
- ▬ Gridline Corridors (250m)
- Construction camp, Batching plant & Concrete tower yard
- SS & BESS Option 1
- SS & BESS Option 2 (Preferred)
- Temp Laydown Areas
- ▬ Farm Portions
- Common Collector & Switching SS
- Alt2 (Preferred)
- Common Collector & Switching SS
- Alt 1
- Roads
 - National freeway
 - Secondary road
 - Other
 - Internal Roads
- ▬ Substation Buffers (250m)



DISCLAIMER
The information on this figure was derived from various digital databases available to WSP Environmental (Pty) Ltd. All information is provided "as is" and it must be acknowledged that data, information, and maps are dynamic and in a constant state of maintenance, correction and update. WSP Environmental (Pty) Ltd cannot accept any responsibility for errors, omissions, or positional accuracy where it has not been directly responsible for the production of the data referenced. There are no warranties, expressed or implied, as to the use of this information, including the warranty of merchantability or fitness for a particular purpose. Notification of any errors will be appreciated.



WSP ENVIRONMENTAL (PTY) LTD
BUILDING C, KNIGHTSBRIDGE
33 SLOANE STREET, BRYANSTON
P O BOX 98887, SLOANE PARK 2152, RSA
Tel +27 (0)11 981 1360, Fax +27 (0)11 981 1381, wsp@wspgroup.co.za

DATA SOURCE:
Service Layer Credits: World Imagery: Earthstar Geographics
World Ocean Base: Esri, GEBCO, DeLorme, NaturalVue

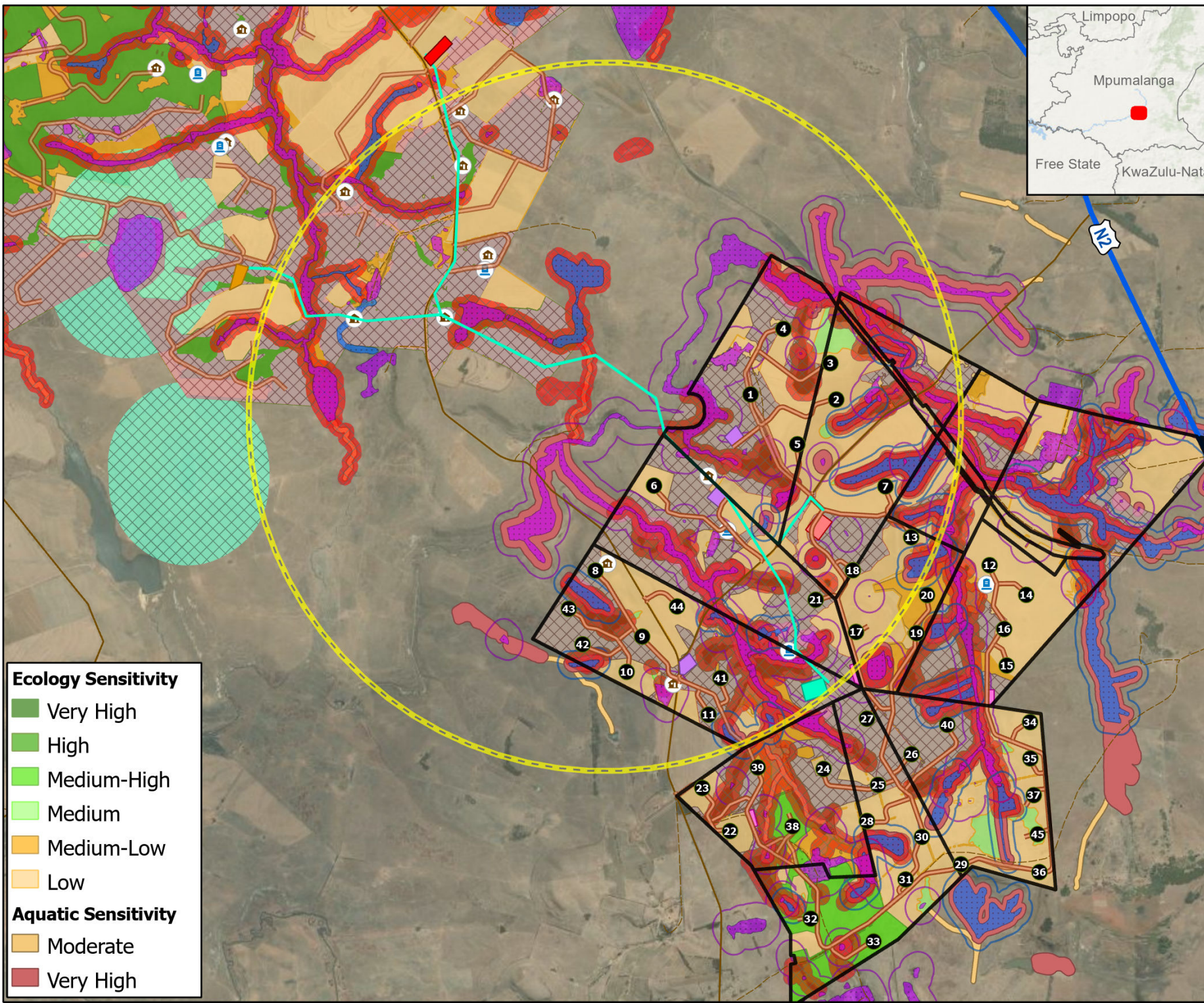
COORDINATE SYSTEM:

PROJECT TITLE:
CAMDEN RENEWABLE ENERGY COMPLEX

SCALE: 1:70 000	DRAWN BY: TS
DATE: 2022/11/01	REVIEWED BY: AS

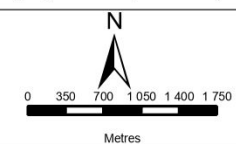
FIGURE NO:	PROJECT NO: 41103247	REV:
------------	----------------------	------

© COPYRIGHT RESERVED
The content of this document is privileged and confidential and may not be disclosed or reproduced without the express authorisation of the author, being "WSP Environmental (Pty) Ltd"



CAMDEN 2 WEF SENSITIVITY MAP

- Legend**
- Turbine Locations
 - Martial Eagle Nest Buffer (5km No Turbine Exclusion Zone)
 - Camden 2 OHL 132kV
 - Farm Portions
 - Construction camp, Batching plant & Concrete tower yard
 - SS & BESS 7ha Option 1
 - SS & BESS 7ha Option 2 (Preferred)
 - Common Collector & Switching SS Alt 1
 - Common Collector & Switching SS Alt 2 (Preferred)
 - Temp Laydown Areas
 - Roads**
 - National freeway
 - Secondary road
 - Other
 - Internal Roads
 - Heritage**
 - Burial Site
 - Structure
 - Bats**
 - Medium
 - High
 - High 200m Buffer
 - Medium 150m Buffer
 - Avifauna**
 - High Sensitivity Grassland
 - High Sensitivity Pans
 - Very High Sensitivity Wetlands (No-Go)



DISCLAIMER

The information on this figure was derived from various digital databases available to WSP Environmental (Pty) Ltd. All information is provided "as is" and it must be acknowledged that data, information, and maps are dynamic and in a constant state of maintenance, correction and update. WSP Environmental (Pty) Ltd cannot accept any responsibility for errors, omissions, or positional accuracy where it has not been directly responsible for the production of the data referenced. There are no warranties, expressed or implied, as to the use of this information, including the warranty of merchantability or fitness for a particular purpose. Notification of any errors will be appreciated.



WSP ENVIRONMENTAL (PTY) LTD
BUILDING C, KNIGHTSBRIDGE,
33 SLOANE STREET, BRYANSTON
P O BOX 8887, SLOANE PARK 2152, RSA
Tel +27 (0)11 581 1385, Fax +27 (0)11 581 1381, wsp@wspgroup.co.za

DATA SOURCE:
Service Layer Credits: World Imagery: Earthstar Geographics
World Ocean Base: Esri, GEBCO, DeLorme, NaturalVue

COORDINATE SYSTEM:

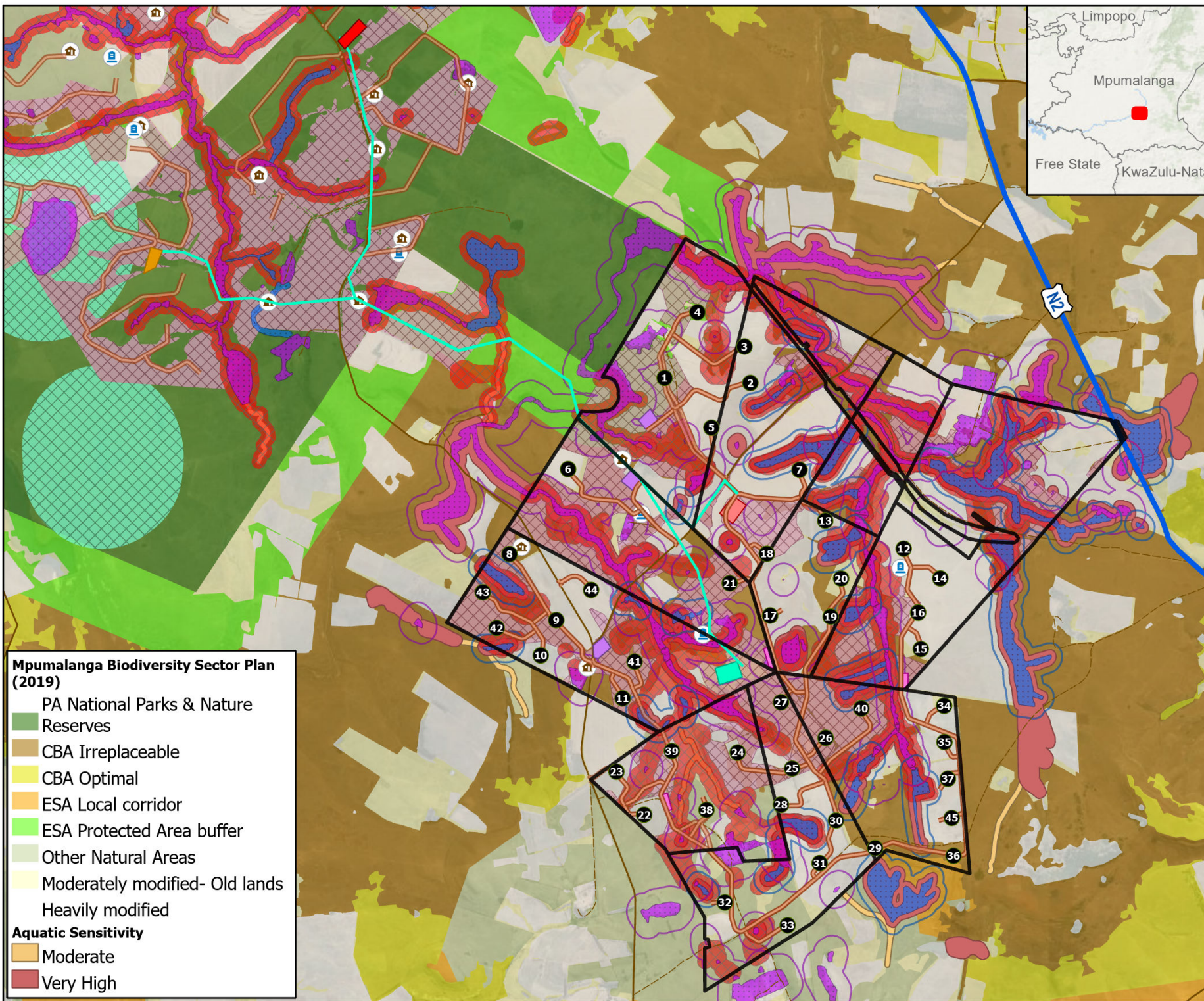
PROJECT TITLE:
CAMDEN RENEWABLE ENERGY COMPLEX

SCALE: 1:70 000 **DRAWN BY:** TS

DATE: 2022/11/01 **REVIEWED BY:** AS

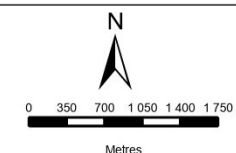
FIGURE NO: **PROJECT NO:** 41103247 **REV:**

© COPYRIGHT RESERVED
The content of this document is privileged and confidential and may not be disclosed or reproduced without the express authorisation of the author, being "WSP Environmental (Pty) Ltd"



CAMDEN 2 WEF SENSITIVITY MAP

- Legend**
- Turbine Locations
 - Farm Portions
 - Camden 2 OHL 132kV
 - Construction camp, Batching plant & Concrete tower yard
 - SS & BESS 7ha Option 1
 - SS & BESS 7ha Option 2 (Preferred)
 - Common Collector & Switching SS Alt 1
 - Common Collector & Switching SS Alt2 (Preferred)
 - Temp Laydown Areas
 - Roads**
 - National freeway
 - Secondary road
 - Other
 - Internal Roads
 - Heritage**
 - Burial Site
 - Structure
 - Bats**
 - Medium
 - High
 - High 200m Buffer
 - Medium 150m Buffer
 - Avifauna**
 - High Sensitivity Grassland
 - High Sensitivity Pans
 - Very High Sensitivity Wetlands (No-Go)



DISCLAIMER

The information on this figure was derived from various digital databases available to WSP Environmental (Pty) Ltd. All information is provided "as is" and it must be acknowledged that data, information, and maps are dynamic and in a constant state of maintenance, correction and update. WSP Environmental (Pty) Ltd cannot accept any responsibility for errors, omissions, or positional accuracy where it has not been directly responsible for the production of the data referenced. There are no warranties, expressed or implied, as to the use of this information, including the warranty of merchantability or fitness for a particular purpose. Notification of any errors will be appreciated.

wsp

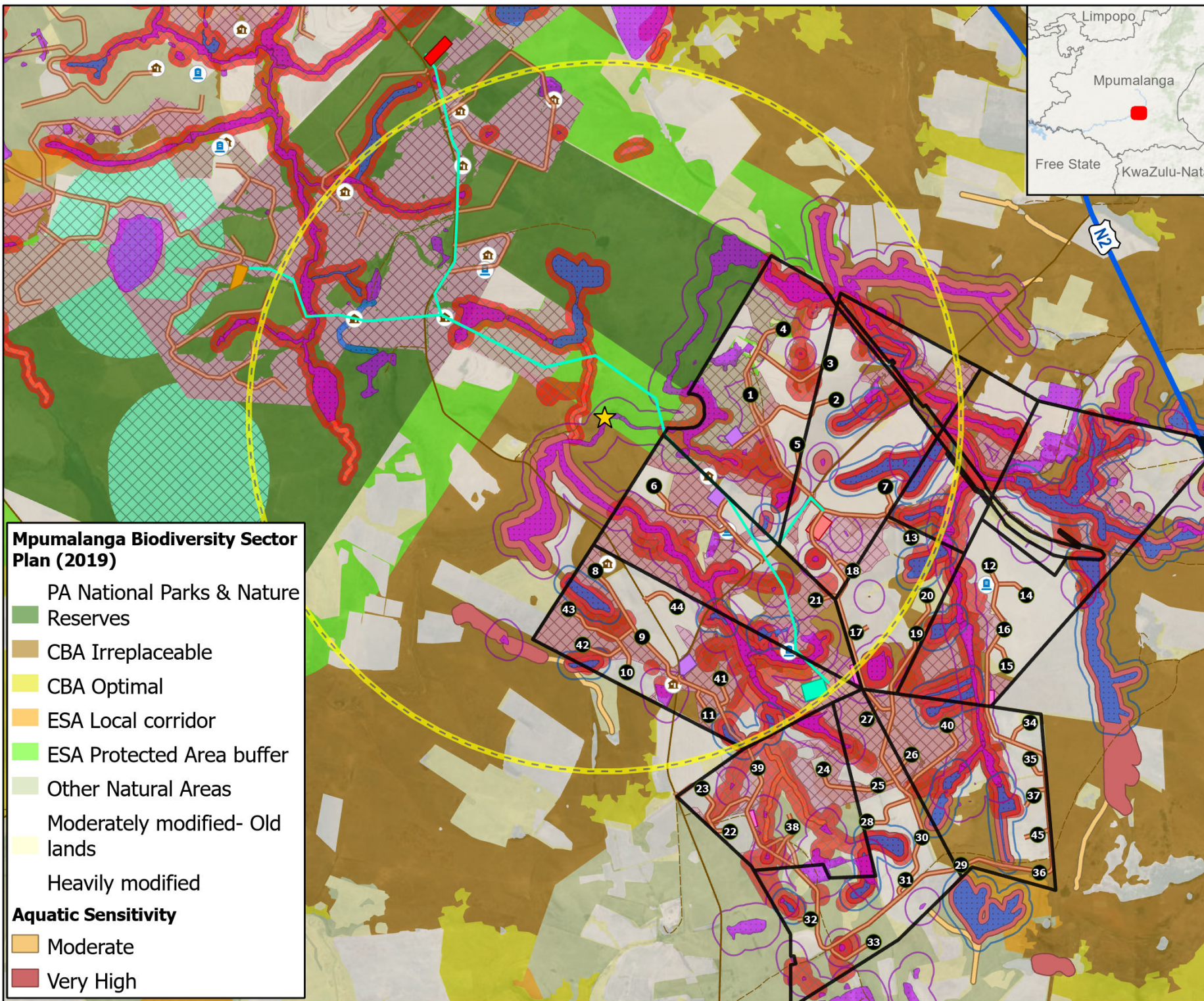
WSP ENVIRONMENTAL (PTY) LTD
BUILDING C, KNIGHTSBRIDGE,
33 SLOANE STREET, BRYANSTON
P O BOX 8887, SLOANE PARK 2152, RSA
Tel +27 (0)11 581 1361, Fax +27 (0)11 581 1361, wsp@wspgroup.co.za

DATA SOURCE:
Service Layer Credits: World Imagery: Earthstar Geographics
World Ocean Base: Esri, GEBCO, DeLorme, NaturalVue

COORDINATE SYSTEM:		
PROJECT TITLE:		
CAMDEN RENEWABLE ENERGY COMPLEX		
SCALE: 1:70 000	DRAWN BY: TS	
DATE: 2022/11/01	REVIEWED BY: AS	
FIGURE NO:	PROJECT NO: 41103247	REV:

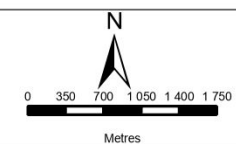
© COPYRIGHT RESERVED
The content of this document is privileged and confidential and may not be disclosed or reproduced without the express authorisation of the author, being "WSP Environmental (Pty) Ltd"

- Mpumalanga Biodiversity Sector Plan (2019)**
- PA National Parks & Nature Reserves
 - CBA Irreplaceable
 - CBA Optimal
 - ESA Local corridor
 - ESA Protected Area buffer
 - Other Natural Areas
 - Moderately modified- Old lands
 - Heavily modified
- Aquatic Sensitivity**
- Moderate
 - Very High



CAMDEN 2 WEF SENSITIVITY MAP

- Legend**
- Turbine Locations
 - ★ Martial Eagle Nest
 - Martial Eagle Nest Buffer (5km No Turbine Exclusion Zone)
 - Camden 2 OHL 132kV
 - ▭ Farm Portions
 - ▭ Construction camp, Batching plant & Concrete tower yard
 - ▭ SS & BESS 7ha Option 1
 - ▭ SS & BESS 7ha Option 2 (Preferred)
 - ▭ Common Collector & Switching SS Alt 1
 - ▭ Common Collector & Switching SS Alt 2 (Preferred)
 - ▭ Temp Laydown Areas
- Roads**
- National freeway
 - Secondary road
 - Other
 - Internal Roads
- Heritage**
- Burial Site
 - Structure
- Bats**
- Medium
 - High
 - High 200m Buffer
 - Medium 150m Buffer
- Avifauna**
- High Sensitivity Grassland
 - High Sensitivity Pans
 - Very High Sensitivity Wetlands (No-Go)



DISCLAIMER

The information on this figure was derived from various digital databases available to WSP Environmental (Pty) Ltd. All information is provided "as is" and it must be acknowledged that data, information, and maps are dynamic and in a constant state of maintenance, correction and update. WSP Environmental (Pty) Ltd cannot accept any responsibility for errors, omissions, or positional accuracy where it has not been directly responsible for the production of the data referenced. There are no warranties, expressed or implied, as to the use of this information, including the warranty of merchantability or fitness for a particular purpose. Notification of any errors will be appreciated.



WSP ENVIRONMENTAL (PTY) LTD
BUILDING C, KNIGHTSBRIDGE,
33 SLOANE STREET, BRYANSTON
P O BOX 98887, SLOANE PARK 2152, RSA
Tel +27 (0)11 581 1360, Fax +27 (0)11 581 1361, wsp@wspgroup.co.za

DATA SOURCE:
Service Layer Credits: World Imagery: Earthstar Geographics
World Ocean Base: Esri, GEBCO, DeLorme, NaturalVue

COORDINATE SYSTEM:

PROJECT TITLE:

CAMDEN RENEWABLE ENERGY COMPLEX

SCALE: 1:70 000 **DRAWN BY:** TS

DATE: 2022/11/01 **REVIEWED BY:** AS

FIGURE NO: **PROJECT NO:** 41103247 **REV:**

© COPYRIGHT RESERVED
The content of this document is privileged and confidential and may not be disclosed or reproduced without the express authorisation of the author, being "WSP Environmental (Pty) Ltd"

Mpumalanga Biodiversity Sector Plan (2019)

- PA National Parks & Nature Reserves
 - CBA Irreplaceable
 - CBA Optimal
 - ESA Local corridor
 - ESA Protected Area buffer
 - Other Natural Areas
 - Moderately modified- Old lands
 - Heavily modified
- Aquatic Sensitivity**
- Moderate
 - Very High