



11 April 2023
 581877

Dear Stakeholder

Basic Assessments (BAs) for Solar Energy Facilities in the Stilfontein Cluster, Stilfontein, North West Province: Opportunity to Register as an Interested and Affected Party and Release of Basic Assessment Reports for Public Review.

South Africa Mainstream Renewable Power Developments (Pty) Ltd (Mainstream) proposes to construct up to nine Photovoltaic (PV) facilities with a capacity of up to 150MW and associated grid infrastructure (Figure 1).

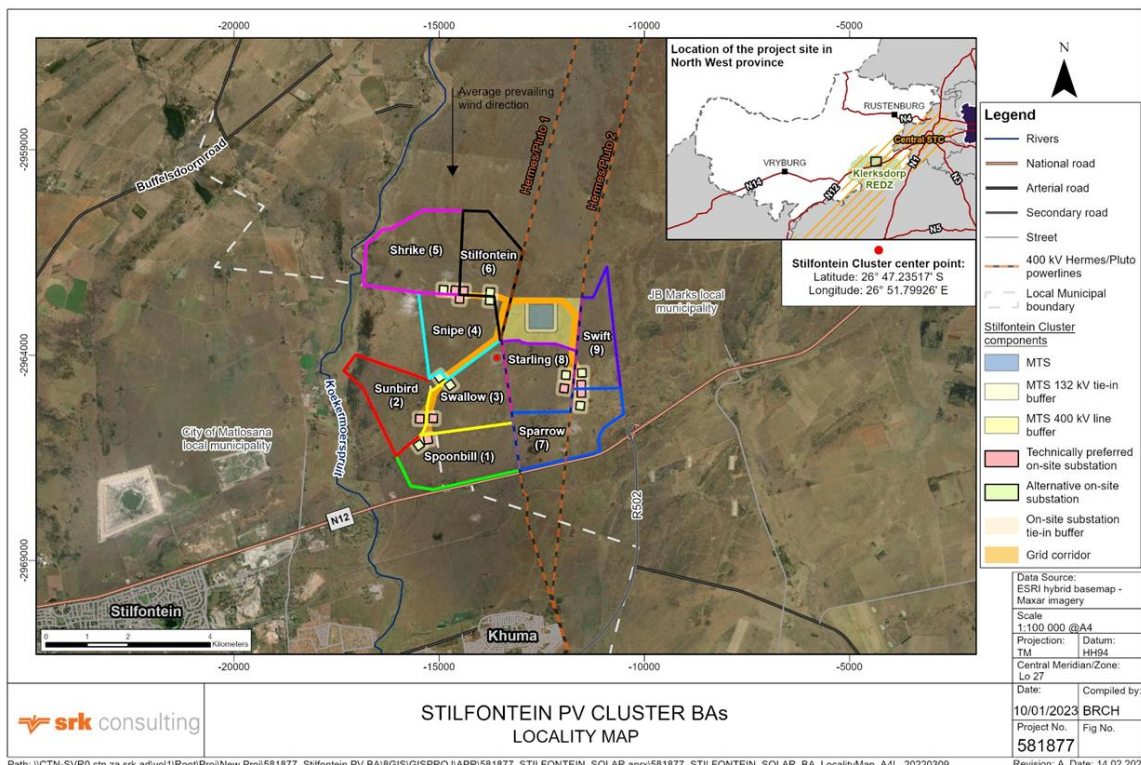


Figure 1: Location of Stilfontein Cluster

Partners R Armstrong, P Aucamp, JS Bartels, CM Bauman, N Brien, JM Brown, LSE Coetser, CD Dalgliesh, BM Engelsman, R Gardiner, M Hinsch, SG Jones, W Jordaan, WC Joughin, DA Kilian, F Lake, JA Lake, NG Macfarlane, V Maharaj, I Mahomed, HAC Meintjes, MJ Morris, DH Mossop, GP Nel, VS Reddy, S Reuther, PJ Shepherd, T Shepherd, MJ Sim, JS Stiff, M van Huyssteen, AT van Zyl, MD Wanless, CJ Wessels, ML Wertz, A Wood

Directors WC Joughin, V Maharaj, T McGurk, VS Reddy, T Shepherd, JS Stiff, AT van Zyl

Associate Partners PL Burnmeister, LI Boshoff, T Claassen, SA de Villiers, IT Doku, M du Toit, LM Linzer, JI Mainama, RD O'Brien, AM Robertshaw, LC Shand

Consultants JR Dixon, PrEng, GC Howell, PrEng, PhD, WC Joughin, PrEng, MSc, PR Labrum, PrEng, LM Linzer, PrSci Nat, PhD, SA Lorentz, PhD, RRW McNeill, PrTech Eng, HAC Meintjes, PrEng, MSc, PN Rosewame, PrSci Nat, MSc, VM Simposya, PrSci Nat, AA Smithen, PrEng, TR Stacey, PrEng, DSc, PJ Terbrugge, PrSci Nat, MSc, HFJ Theart, PrSci Nat, PhD, DJ Venter, PrTech Eng

African Offices:
 Cape Town + 27 (0) 21 659 3060
 Durban + 27 (0) 31 279 1200
 East London + 27 (0) 43 748 6292
 Johannesburg + 27 (0) 11 441 1111
 Pietermaritzburg + 27 (0) 33 347 5069
 Gqeberha (Port Elizabeth) + 27 (0) 41 509 4800
 Pretoria + 27 (0) 12 361 9821
 Accra + 23 (3) 24 485 0928
 Lubumbashi + 243 (0) 81 999 9775

Group Offices:
 Africa
 Asia
 Australia
 Europe
 North America
 South America



Nineteen separate BA processes are underway as follows:

- 9 x PV facility BAs, including 11-33kV transmission lines, each including Battery Energy Storage Systems (BESS), and Independent Power Producer (IPP)-side on-site substations;
- 9 x Grid Connection BAs, including Eskom-side on-site substations and 132kV transmission lines to the Main Transmission Station (MTS); and
- 1 x Grid Connection BA, including MTS and 400kV transmission lines to existing Hermes Pluto transmission lines.

The National Environmental Management Act 107 of 1998 (NEMA), and the Environmental Impact Assessment (EIA) Regulations, 2014 (promulgated in terms of NEMA) warrant that listed activities require Environmental Authorisation (EA) from the National Department of Forestry, Fisheries and Environment (DFFE). Basic Assessment (BA) processes must be followed because the projects lie in the Klerksdorp Renewable Energy Development Zone (REDZ).

SRK Consulting (South Africa) (Pty) Ltd (SRK) has been appointed by Mainstream to compile the BA Reports for the PV facilities and associated infrastructure in terms of NEMA and the EIA Regulations, 2014.

Opportunity to Register and Comment on the Draft BA Reports for the PV Facility BAs

The nine BA Reports (and executive summaries) for the PV facility BAs are available for **public review and comment** electronically on SRK's website, www.srk.co.za (via the 'Knowledge Centre' and 'Public Documents' links). Should you require a hardcopy of the report please contact SRK at the contact details below and an arrangement will be made to place a hardcopy in a nearby library.

Opportunity to Register for the Grid Connection BAs

Although the Grid Connection BAs are not yet available for comment, stakeholders are invited to **register** on the project database. **Only registered stakeholders will be notified of the availability of the BA Reports and invited to submit comments on the Grid Connection BA Reports.**

Comment on the BA Reports or request to register as a stakeholder must ideally be submitted via the following online form: <https://forms.office.com/r/RisvzNuZ6D> and must be received by **16 May 2023**. Alternatively, comments and / or request to register as a stakeholder may be submitted via email to Asheerah Meyer from SRK Consulting: Tel: 021 659 3060; Email: Ameyer@srk.co.za by **16 May 2023**.

By registering as a stakeholder, you voluntarily consent to SRK, the Project Proponent and the Competent Authority processing and selectively disclosing your personal data (including contact details), in fulfilment of the requirements of the EIA Regulations, 2014, and the National Appeal Regulations, 2014. Personal data will only be used for the purposes of providing relevant project information (pertinent to the EIA process and related activities e.g. notifications of decisions, subsequent appeals, audits) and obtaining feedback on these processes. SRK undertakes to process data in compliance with the Protection of Personal Information Act 14 of 2013 and in accordance with our Protection of Personal Information Policy.

Yours faithfully,

SRK Consulting (South Africa) (Pty) Ltd

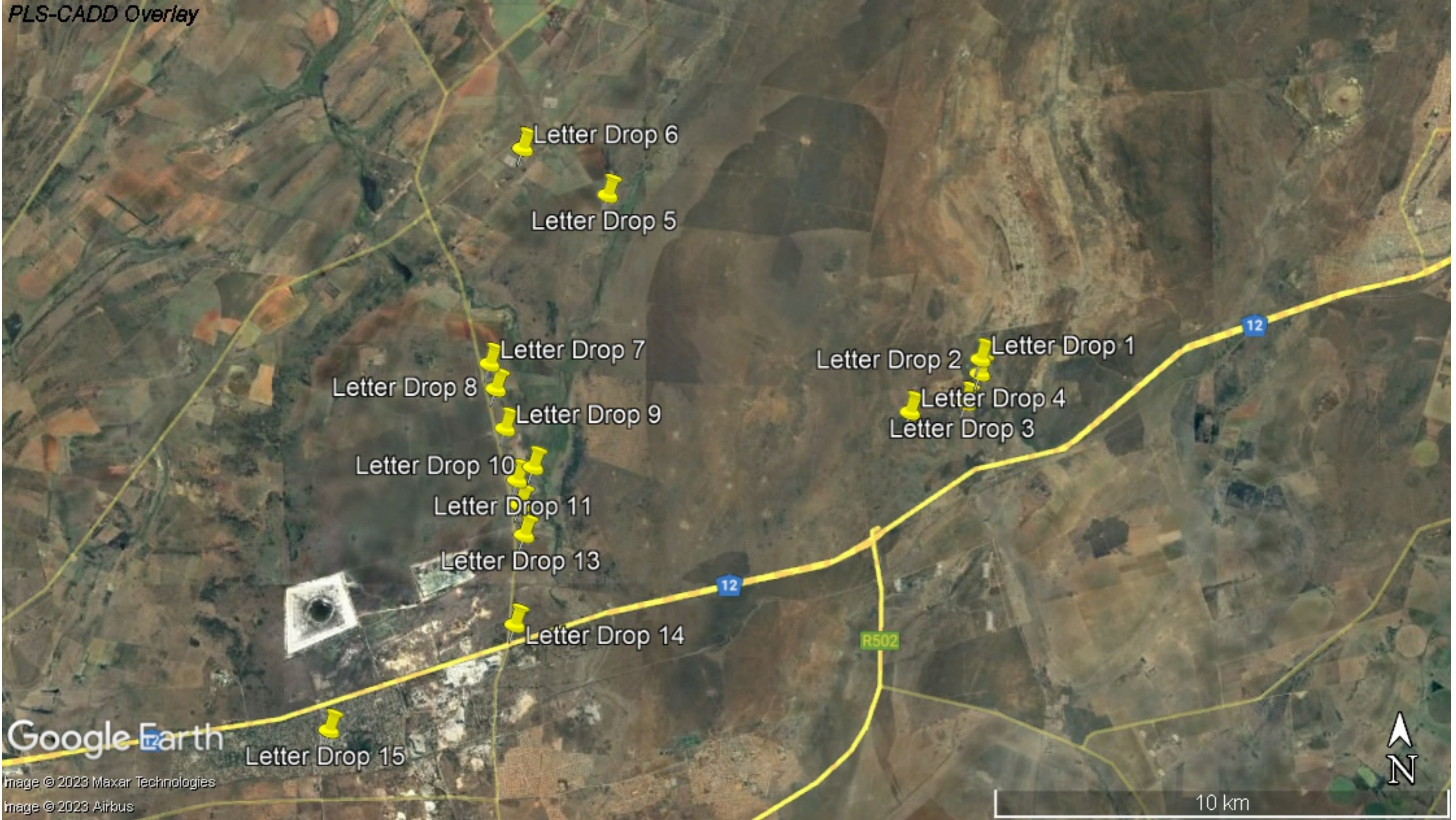
SRK Consulting - Certified Electronic Signature

58187745013/Letter
360-7620-1440-ELSL-30/03/2023
This signature has been properly certified. The Author has given permission for use for this document. The details are stored in the SRK Signature Database





Lauren Elston, *Registered EAP*
Senior Environmental Consultant



Letter Drop Locations - April 2023

PLS-CADD Overlay





Letter Drop No	Coordinates		Description/Motivation	Photos
	Latitude	Longitude		
1	26°46'19.40"S	26°55'6.63"E	One letter dropped at farmstead gate on eastern side of the sites. No owner was present.	
2	26°46'29.50"S	26°55'6.10"E	One letter dropped at farmstead gate on eastern side of the sites. No owner was present.	

3	26°46'50.36"S	26°54'54.84"E	One letter dropped at farmstead gate on eastern side of the sites. No owner was present.		
4	26°46'57.16"S	26°54'10.13"E	One letter dropped at farmstead gate on eastern side of the sites. No owner was present.		
5	26°44'21.91"S	26°50'8.69"E	Five letters were dropped at the small farming community to residents at the northern side of the sites.	No Photo	
6	26°43'48.81"S	26°49'0.84"E	One letter was handed to the farmer at the farmstead North of the sites.	No Photo	
7	26°46'22.54"S	26°48'34.46"E	Nine letters were handed to the farmer on the western side of the sites to distribute.	No Photo	

8	26°46'40.45"S	26°48'39.35"E	One letter dropped at farmstead gate on western side of the sites. No owner was present.	
9	26°47'8.69"S	26°48'46.92"E	Ten letters were handed dropped at a resident to distribute.	No Photo
10	26°47'36.26"S	26°49'9.28"E	Five letters were dropped at the Frontier Shooting Range gate.	No Photo
11	26°47'45.62"S	26°48'56.58"E	Five letters were dropped at the gate of the Roadspan Stilfontein Plant	
12	26°48'3.01"S	26°48'59.01"E	Five letters were dropped at a member of the community to distribute.	No Photo
13	26°48'24.60"S	26°49'2.15"E	Five letters were dropped at a member of the community to distribute.	No Photo
14	26°49'28.38"S	26°48'54.89"E	Ten letters were dropped with an employee of MMU Motors who will further distribute the letters.	No Photo
15	26°50'43.19"S	26°46'26.98"E	20 letters were placed at the entrance of the Stilfontein public library to create awareness of the project to visitors at the library.	No Photo

Letter Drop - May 2022

No	PICTURES	AREA	Coordinates
<p>Site Notice 1 and letter drop</p>		<p>Stilfontein Library – 14 letters and 1 site notice</p>	<p>GPS did not record</p>
<p>Letter Drop 1</p>		<p>Homestead (Letters were delivered to Chris Palmer, will distribute to local farmers) – 10 letters</p>	<p>GPS did not record</p>

Stakeholder Engagement Process

Basic Assessments (BAs) for Solar Energy Facilities in the Stilfontein Cluster, Stilfontein, North West Province

SRK Project No: 581887

Notice is hereby given of the stakeholder engagement process and the opportunity to register as an Interested and Affected Party (IAP) in terms of the National Environmental Management Act 107 of 1998 (NEMA) and the National Heritage Resources Act 25 of 1998 (NHRA):

Project: Mainstream Renewable Power South Africa (Pty) Ltd (Mainstream) proposes to develop nine 100 MW Photovoltaic (PV) facilities and associated infrastructure, comprising four substations and grid connections, to evacuate the produced energy to the national grid, within the Stilfontein Cluster. Thirteen (13) separate Environmental Authorisation (EA) Applications will be submitted:

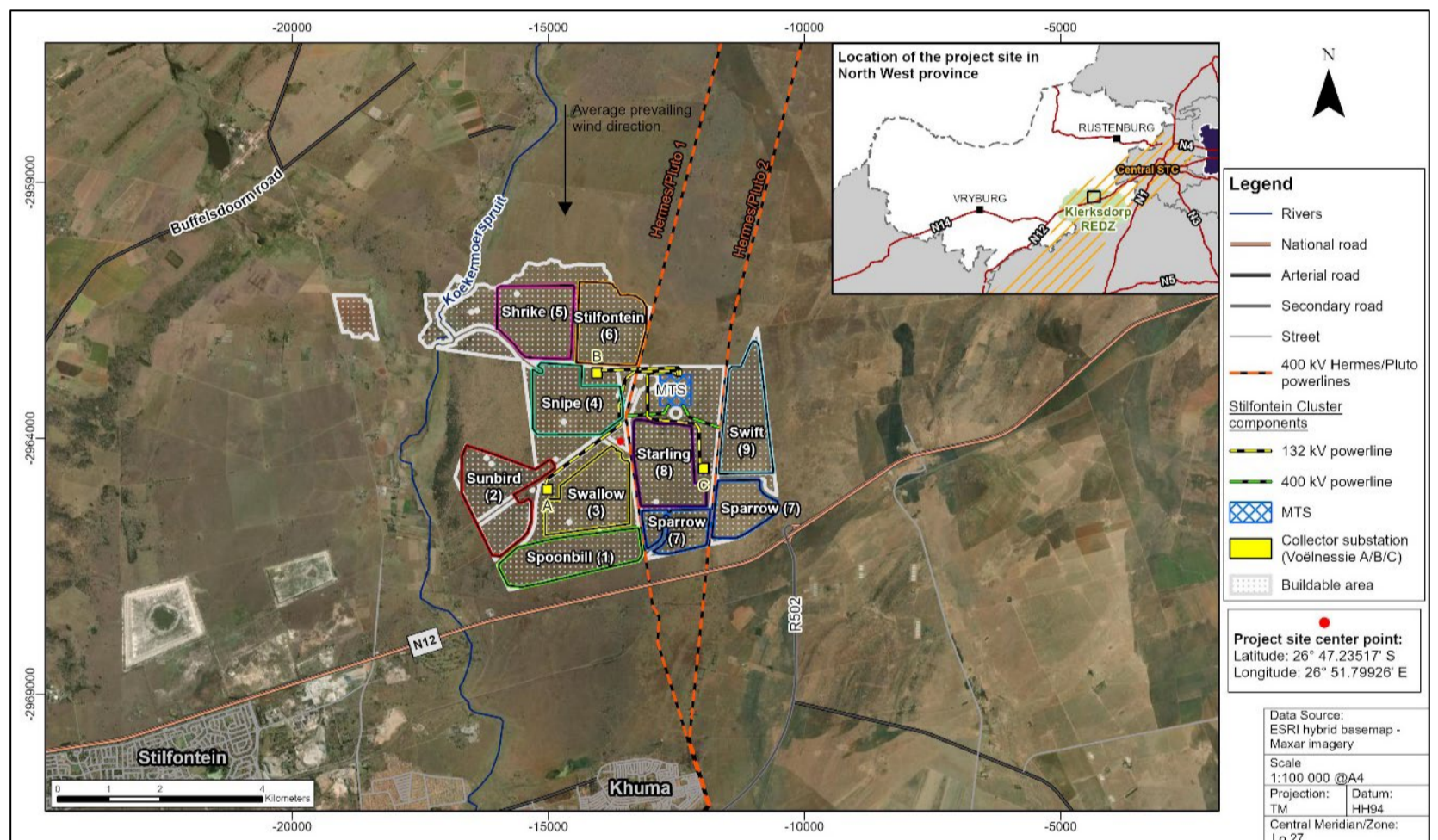
SPV facility BAs:

1. Stilfontein PV
2. Sunbird PV
3. Snipe PV
4. Starling PV
5. Sparrow PV
6. Swallow PV
7. Spoonbill PV
8. Swift PV
9. Shrike PV

Grid Connection BAs:

10. Voëlnessie A
11. Voëlnessie B
12. Voëlnessie C
13. MTS

Location: The proposed Stilfontein Cluster is located in the JB Marks and City of Matlosana Local Municipalities, near Stilfontein in the North West Province.



The proposed Stilfontein Cluster is located in the JB Marks and City of Matlosana Local Municipalities, near Stilfontein in the North West Province.

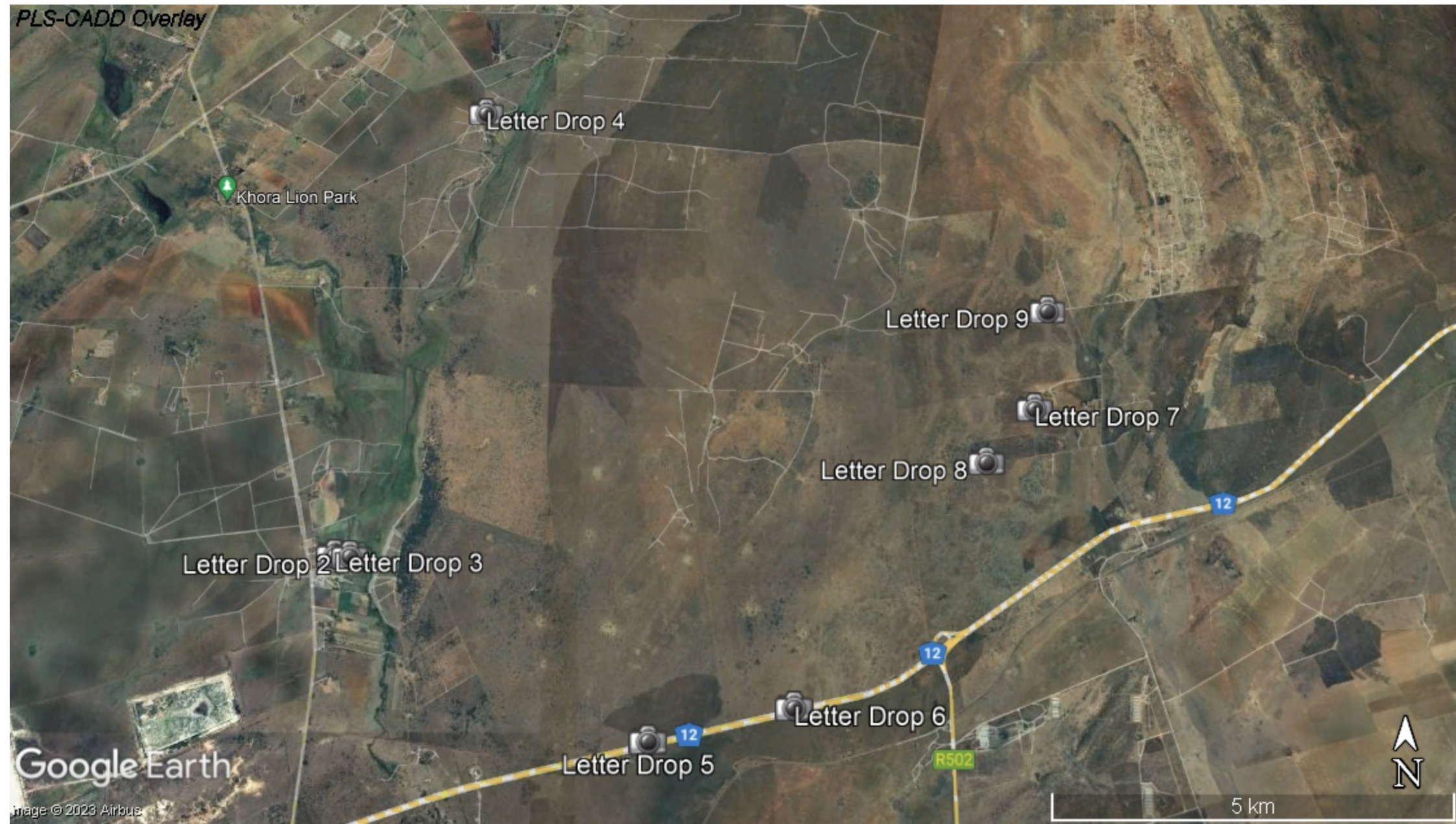
Applications for:

- Thirteen (13) separate EAs in terms of the NEMA EIA Regulations, 2014, for listed activities in Listing Notice (LN) 1, LN 2 and LN 3. A BA process must be followed as the project lies in the Klerksdorp Renewable Energy Development Zone (REDZ).
- Heritage Approval in terms of NHRA.

Opportunity to register: The 13 Draft Basic Assessment Reports will be released for public comment once the EA applications have been submitted. Stakeholders are invited to **register** on the project database by contacting SRK. Stakeholders must refer to the project name / number above and include their name, contact details, and an indication of any direct business, financial, personal, or other interest which they have in the application. **Only registered stakeholders will be notified of the availability of relevant documentation.** Registrations received **by 30 June 2022** will be guaranteed to receive notification prior to the commenting period; however, later registrations will also receive the information during the ongoing process.

To register or request information please contact: Sue Reuther of SRK Consulting at sreuther@srk.co.za, Tel: (021) 659 3060 (or Postnet Suite #206, Private Bag X18, Rondebosch, 7701 or Fax: (021) 685 7105).

By registering as an IAP, you consent to SRK processing your personal information for the purposes of obtaining feedback for the environmental authorisation process and to provide you with relevant information about it.



No	PICTURES	AREA	Coordinates
Letter Drop 2		<p>Letters given to Betha Motlhaodi, will distribute to locals on farmstead – 10 letters</p>	<p>-26.793402704°, 26.820341975°</p>
Letter Drop 3		<p>Frontier Shooting Range</p>	<p>-26.793290437°, 26.818341484° -26.793290962°, 26.818344116°</p>

No	PICTURES	AREA	Coordinates
Letter Drop 4		<p>Letter given to the workers on the farm (Farm owner is Gabriel Kriston, 082 564 2826) – 2 letters</p>	<p>-26.739072810°, 26.835783018°</p>
Letter Drop 5		<p>Doornplaat RE4/410 letter drop-off</p>	<p>-26.814075751°, 26.859129175° -26.814057463°, 26.859117540°</p>

No	PICTURES	AREA	Coordinates
Letter Drop 6		Doornplaat RE3/410 letter drop-off	<p>-26.810413266°, 26.877506218°</p> <p>-26.810397977°, 26.877510654°</p>
Letter Drop 8		Letter drop-off at homestead	<p>-26.782528618°, 26.902878262°</p> <p>-26.782526650°, 26.902873031°</p>
Letter Drop 9		Letter drop-off at homestead	<p>-26.764278776°, 26.911826057°</p> <p>-26.764270554°, 26.911823446°</p>