

**APPENDIX F**  
**PROOF OF NOTIFICATION**

JD Jacqui Davis  
 To  
 Bcc: JIM.Mahlangu@dffe.gov.za; mlisoane@environment.gov.za; Stanley.T@environment.gov.za; mrabothata@environment.gov.za; slekoto@environment.gov.za; BCAdmin@environment.gov.za; tsekonko@environment.gov.za; AckermanP@dwa.gov.za; RoetsW@dws.gov.za; ompiphase@energy.gov.za; Nkuthula.Mbigje@energy.gov.za; Pheleli.Masipa@energy.gov.za; AnnelizaC@dffe.gov.za; maretha.alant@sanparks.org; Fahiem.Daniels@sanparks.org; pladi@tourism.gov.za; kimmkhubela@tourism.gov.za; caroline.richardson@dpe.gov.za; chambers@accu.org.za; EB.Mohobeli@da.gov.za; elroy@copta.gov.za; Sogunribi@nationaldevelopment.gov.za; wmosak@salga.org.za; ichauku@salga.org.za; Andile.Guadix@nera.org.za; bong.msimela@nera.org.za; Adria.Meyer@westerncape.gov.za; gavin.benjamin@westerncape.gov.za; Andre.Oosthuizen@westerncape.gov.za; Keshni.Rughoober@westerncape.gov.za; Gerhard.Gerber@westerncape.gov.za; Lynn.Jacobs@westerncape.gov.za; Waleed.Galvaan@westerncape.gov.za; Anthony.vanWyk@westerncape.gov.za

Thu 25/11/2021 16:57

Dear Authorities,

<p><b>VOORGESTELDE SERE FOTOVOLTAÏESE SONKRAG AANLEG FASE 1A EN VERWANTE INFRASTRUKTUUR, WESKAAP PROVINSIE</b></p> <p><b>KENNISGEWING AANGAANDE DIE AANSOEK VIR OMGEWINGSMAGTIGING</b></p>	<p><b>PROPOSED SERE SOLAR PHOTOVOLTAIC PLANT PHASE 1A, WESTERN CAPE</b></p> <p><b>NOTICE OF APPLICATION FOR ENVIRONMENTAL AUTHORISATION</b></p>
<p>Hierdie kennisgewing word gegee kragtens die Omgewingsimpakbepalingsregulasies (Staatskennisgewing Nr. R. 982 van 4 Desember 2014, soos gewysig), kragtens die Wet op Nasionale Omgewingsbestuur (Wet Nr. 107 van 1998) ("NEMA").</p> <p><b>PROJEKTOORSIG:</b></p> <p>Eskom (die Aansoeker) beplan die ontwikkeling van 'n fotovoltaïese sonkrag aanleg om die dringende noodsaaklikheid van bykomende opwekkingsvermoë aan te spreek. Die voorgestelde aanleg word binne Eskom se bestaande SERE windplaas (Lot 1862 Olifants Rivier Nedersetting) in die Matsikama Plaaslike Munisipaliteit in die Weskaap beplan. Die opwekkingsvermoë van die voorgestelde Sere Fotovoltaïese Sonkrag Aanleg Fase 1A is 19.9MW hernubare sonenergie. Die beplande terrein is kleiner as 20 hektaar. Die verwante infrastruktuur sluit toegangspaaie, ondergrondse 22-33kV kraglyne na die bestaande Skaapvlei Substasie en 'n beheerkamer in.</p> <p><b>AANSOEK VIR OMGEWINGSMAGTIGING:</b></p> <p>Nemai Consulting (Edms) Bpk is deur die Aansoeker as die Omgewingsimpakbepalingspraktisyn aangestel om vir omgewingsmagtiging aansoek te doen en om 'n Basiese Bepalingsproses te onderneem ingevolge Regulasie 19 en Regulasie 20 van Staatskennisgewing Nr. R. 982 van 4 Desember 2014, soos gewysig. Die Departement van Bosbou, Visserye en die Omgewing ("DFFE") is die bevoegde owerheid met betrekking tot die aansoek.</p> <p>Die besonderhede van die assessering, bevindinge van die spesialis-studies, die impakte en gepaardgaande versagende maatreëls sowel as die kommentaar ontvang vanaf Belanghebbende en Geaffecteerde Partye sal in die Basiese Bepalingsverslag saamgevat word. 'n Afskrif van die voorlopige Basiese Bepalingsverslag sal vir openbare besigtiging beskikbaar gestel word. Daarna sal die Basiese Bepalingsverslag gefinaliseer en in afdiening word by die DFFE.</p> <p><b>OPENBARE DEELNAME:</b></p> <p>'n Openbare deelnameproses sal ingevolge Hoofstuk 6 van die Omgewingsimpakbepalingsregulasies, soos gewysig, NEMA en die Openbare Deelnameplan wat deur DFFE goedgekeur is, uitgevoer word. 'n Agergrondinligtingsdokument en Terugvoeringsvorm is op die Nemai Consulting webwerf (<a href="https://nemai.co.za/environmental/downloadable-documents/">https://nemai.co.za/environmental/downloadable-documents/</a>) beskikbaar. Om as 'n Belanghebbende en Geaffecteerde Party te registreer en om kommentaar voor te lê, stuur asb. u naam, kontakbesonderhede en enige kommentaar na die kontakpersoon hieronder aangedui teen <b>17 Januarie 2022</b>. Slegs Belanghebbende en Geaffecteerde Partye sal voortaan van die proses op hoogte gehou word. Alle besware sal in 'n Kommentaar en Terugvoeringsverslag saamgevat word. Die finale Basiese Bepalingsverslag wat by DFFE ingedien sal word, sal die Kommentaar en Terugvoeringsverslag insluit.</p> <p><b>KONTAKBESONDERHEDE VAN OMGEWINGBEPALINGSPRAKTISYN (VIR KOMMENTAAR OF NAVRAE):</b></p> <p><b>Kontakpersoon:</b> Jacqui Davis (Nemai Consulting)  <b>Tel:</b> (011) 781 1730  <b>Faks:</b> (011) 781 1731  <b>E-pos:</b> <a href="mailto:jacquid@nemai.co.za">jacquid@nemai.co.za</a>  <b>Posadres:</b> PO Box 1673, Sunninghill, 2157</p>	<p>Notice is hereby given in terms of the Environmental Impact Assessment (EIA) Regulations (Government Notice No. R. 982 of 4 December 2014, as amended), in terms of the National Environmental Management Act (Act No. 107 of 1998).</p> <p><b>PROJECT OVERVIEW:</b></p> <p>Eskom Holdings SOC Ltd. (the Applicant) aims to address the urgent need for additional generation capacity through the proposed construction of a solar photovoltaic (PV) plant within Eskom's existing SERE Wind Farm facility (Lot 1862 Olifants River Settlement) located within Matsikama Local Municipality in the Western Cape Province. The proposed SERE Solar PV Plant Phase 1A will allow for a generation capacity of 19.9MW renewable solar energy with a less than 20ha footprint. The associated infrastructure includes access roads, control buildings, and underground 22-33kV power line linking to the existing Skaapvlei Substation.</p> <p><b>APPLICATION FOR ENVIRONMENTAL AUTHORISATION:</b></p> <p>Nemai Consulting (Pty) Ltd was appointed by the Applicant as the Environmental Assessment Practitioner (EAP) to conduct the Basic Assessment Process contemplated in Regulation 19 and Regulation 20 of Government Notice No. R. 982 of 4 December 2014, as amended, for the proposed Project. The Competent Authority to decide on the application is the Department of Forestry, Fisheries and the Environment (DFFE).</p> <p>The Basic Assessment Report (BAR) will contain the details of the assessment conducted and include all comments from Interested and Affected Parties (IAPs), specialist investigations, and impacts that have been identified and proposed mitigation measures to counter potential impacts. A copy of the Draft BAR will be made available for public review, prior to finalisation and submission of the BAR to the DFFE.</p> <p><b>PUBLIC PARTICIPATION:</b></p> <p>A public participation process will be conducted in terms of Chapter 6 of the EIA Regulations, as amended, of the NEMA, and the DFFE approved project Public Participation Plan. A Background Information Document (BID) and Reply Form are available on the Nemai Consulting website (<a href="https://nemai.co.za/environmental/downloadable-documents/">https://nemai.co.za/environmental/downloadable-documents/</a>). To ensure you are identified as an IAP, please submit your name, contact information and comment regarding the proposed development, by means of e-mail, fax or post to the EAP below at Nemai Consulting by <b>17 January 2022</b>. Please note that only registered IAPs will continue to be notified of the BA process as it unfolds. All issues and concerns will be incorporated into a Comments and Responses Report (CRR) which will be included in the final BAR submitted to the DFFE.</p> <p><b>CONTACT PERSON / EAP (COMMENTS OR QUERIES):</b></p> <p><b>Contact Person:</b> Jacqui Davis (Nemai Consulting)  <b>Tel:</b> (011) 781 1730  <b>Fax:</b> (011) 781 1731  <b>Email:</b> <a href="mailto:jacquid@nemai.co.za">jacquid@nemai.co.za</a>  <b>Postal Address:</b> PO Box 1673, Sunninghill, 2157</p>

Kind regards,  
 Jacqui

**Environmental Consultant****Nemai Consulting**

Tel : +27 11 781 1730

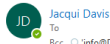
Fax : +27 11 781 1731

Mobile : +27 71 370 1168

Email : [jacquid@nemai.co.za](mailto:jacquid@nemai.co.za)Web: [www.nemai.co.za](http://www.nemai.co.za)

Address : 147 Bram Fischer Drive Ferndale, 2194, South Africa

Postal Address : PO Box 1673, Sunninghill, 2157, South Africa



Jacqui Davis

To

Bcc: info@DALRRD.gov.za; Nonlanhlab@daird.gov.za; ceoheritage@westerncape.gov.za; ronny.nyuka@westerncape.gov.za; jonathan.windvogel@westerncape.gov.za; guy.thomas@westerncape.gov.za; hwc.hwc@westerncape.gov.za; zwelibanzi.shicika@westerncape.gov.za; Colette.Scheemeyer@westerncape.gov.za; Wasefa.Dhansay@westerncape.gov.za; Stephanie.Barnardt@westerncape.gov.za; andrew.september@westerncape.gov.za; singatshu@sahra.org.za; andre@elsenburg.com; peter@elsenburg.com; landuse-elsenburg@elsenburg.com; LandUse.Elsenburg@elsenburg.com; CorvW@elsenburg.com; jacqui.geoch@westerncape.gov.za; sharonette.webb@westerncape.gov.za; Ponto.Legodi@westerncape.gov.za; nel.joseph@westerncape.gov.za; basson.gideon@dpw.gov.za; frederick.johnson@dpw.gov.za; nico.vanderwalt@sanparks.org; mm@wcdm.co.za; dikotze@wcdm.co.za; cjm@malherbe@wcdm.co.za; smarkus@wcdm.co.za; westcoastdm@wcdm.co.za; jhanv@matzikama.gov.za; amelaj@matzikama.gov.za; andress@matzikama.gov.za; albertus@matzikama.gov.za

Reply Reply All Forward Thu 25/11/2021 16:57

Dear Authorities,

<p><b>VOORGESTELDE SERE FOTOVOLTAÏESE SONKRAG AANLEG FASE 1A EN VERWANTE INFRASTRUKTUUR, WESKAAP PROVINSIE</b></p> <p><b>KENNISGEWING AANGAANDE DIE AANSOEK VIR OMGEWINGSMAGTIGING</b></p>	<p><b>PROPOSED SERE SOLAR PHOTOVOLTAIC PLANT PHASE 1A, WESTERN CAPE</b></p> <p><b>NOTICE OF APPLICATION FOR ENVIRONMENTAL AUTHORISATION</b></p>
<p>Hierdie kennisgewing word gegee kragtens die Omgewingsimpakbepalingsregulasies (Staatskennisgewing Nr. R. 982 van 4 Desember 2014, soos gewysig), kragtens die Wet op Nasionale Omgewingsbestuur (Wet Nr. 107 van 1998) ("NEMA").</p> <p><b>PROJEKTOORSIG:</b></p> <p>Eskom (die Aansoeker) beplan die ontwikkeling van 'n fotovoltaïese sonkrag aanleg om die dringende noodsaaklikheid van bykomende opwekkingsvermoë aan te spreek. Die voorgestelde aanleg word binne Eskom se bestaande SERE windplaas (Lot 1862 Olifants Rivier Nedersetting) in die Matsikama Plaaslike Munisipaliteit in die Weskaap beplan. Die opwekkingsvermoë van die voorgestelde Sere Fotovoltaïese Sonkrag Aanleg Fase 1A is 19.9MW hernubare sonenergie. Die beplande terrein is kleiner as 20 hektaar. Die verwante infrastruktuur sluit toegangspaaie, ondergrondse 22-33kV kraglyne na die bestaande Skaapvlei Substansie en 'n beheerkamer in.</p> <p><b>AANSOEK VIR OMGEWINGSMAGTIGING:</b></p> <p>Nemai Consulting (Edms) Bpk is deur die Aansoeker as die Omgewingsimpakbepalingspraktisyn aangestel om vir omgewingsmagtiging aansoek te doen en om 'n Basiese Bepalingsproses te onderneem ingevolge Regulasie 19 en Regulasie 20 van Staatskennisgewing Nr. R. 982 van 4 Desember 2014, soos gewysig. Die Departement van Bosbou, Visserye en die Omgewing ("DFFE") is die bevoegde owerheid met betrekking tot die aansoek.</p> <p>Die besonderhede van die assessering, bevindinge van die spesialis-studies, die impakte en gepaardgaande versagende maatreëls sowel as die kommentaar ontvang vanaf Belanghebbende en Geaffekteerde Partye sal in die Basiese Bepalingsverslag saamgevat word. 'n Afskrif van die voorlopige Basiese Bepalingsverslag sal vir openbare besigtiging beskikbaar gestel word. Daarna sal die Basiese Bepalingsverslag gefinaliseer en inaedien word by die DFFE.</p> <p><b>OPENBARE DEELNAME:</b></p> <p>'n Openbare deelnameproses sal ingevolge Hoofstuk 6 van die Omgewingsimpakbepalingsregulasies, soos gewysig, NEMA en die Openbare Deelnameplan wat deur DFFE goedgekeur is, uitgevoer word. 'n Agtergrondinligtingsdokument en Terugvoeringsvorm is op die Nemai Consulting webwerf (<a href="https://nemai.co.za/environmental/downloadable-documents/">https://nemai.co.za/environmental/downloadable-documents/</a>) beskikbaar. Om as 'n Belanghebbende en Geaffekteerde Party te registreer en om kommentaar voor te lê, stuur asb. u naam, kontakbesonderhede en enige kommentaar na die kontakpersoon hieronder aangedui teen <b>17 Januarie 2022</b>. Slegs Belanghebbende en Geaffekteerde Partye sal voortaan van die proses op hoogte gehou word. Alle besware sal in 'n Kommentaar en Terugvoeringsverslag saamgevat word. Die finale Basiese Bepalingsverslag wat by DFFE ingedien sal word, sal die Kommentaar en Terugvoeringsverslag insluit.</p> <p><b>KONTAKBESONDERHEDE VAN OMGEWINGBEPALINGSPRAKTISYN (VIR KOMMENTAAR OF NAVRAE):</b></p> <p><b>Kontakpersoon:</b> Jacqui Davis (Nemai Consulting)  <b>Tel:</b> (011) 781 1730  <b>Faks:</b> (011) 781 1731  <b>E-pos:</b> <a href="mailto:jacquid@nemai.co.za">jacquid@nemai.co.za</a>  <b>Posadres:</b> PO Box 1673, Sunninghill, 2157</p>	<p>Notice is hereby given in terms of the Environmental Impact Assessment (EIA) Regulations (Government Notice No. R. 982 of 4 December 2014, as amended), in terms of the National Environmental Management Act (Act No. 107 of 1998).</p> <p><b>PROJECT OVERVIEW:</b></p> <p>Eskom Holdings SOC Ltd. (the Applicant) aims to address the urgent need for additional generation capacity through the proposed construction of a solar photovoltaic (PV) plant within Eskom's existing SERE Wind Farm facility (Lot 1862 Olifants River Settlement) located within Matsikama Local Municipality in the Western Cape Province. The proposed SERE Solar PV Plant Phase 1A will allow for a generation capacity of 19.9MW renewable solar energy with a less than 20ha footprint. The associated infrastructure includes access roads, control buildings, and underground 22-33kV power line linking to the existing Skaapvlei Substation.</p> <p><b>APPLICATION FOR ENVIRONMENTAL AUTHORISATION:</b></p> <p>Nemai Consulting (Pty) Ltd was appointed by the Applicant as the Environmental Assessment Practitioner (EAP) to conduct the Basic Assessment Process contemplated in Regulation 19 and Regulation 20 of Government Notice No. R. 982 of 4 December 2014, as amended, for the proposed Project. The Competent Authority to decide on the application is the Department of Forestry, Fisheries and the Environment (DFFE).</p> <p>The Basic Assessment Report (BAR) will contain the details of the assessment conducted and include all comments from Interested and Affected Parties (IAPs), specialist investigations, and impacts that have been identified and proposed mitigation measures to counter potential impacts. A copy of the Draft BAR will be made available for public review, prior to finalisation and submission of the BAR to the DFFE.</p> <p><b>PUBLIC PARTICIPATION:</b></p> <p>A public participation process will be conducted in terms of Chapter 6 of the EIA Regulations, as amended, of the NEMA, and the DFFE approved project Public Participation Plan. A Background Information Document (BID) and Reply Form are available on the Nemai Consulting website (<a href="https://nemai.co.za/environmental/downloadable-documents/">https://nemai.co.za/environmental/downloadable-documents/</a>). To ensure you are identified as an IAP, please submit your name, contact information and comment regarding the proposed development, by means of e-mail, fax or post to the EAP below at Nemai Consulting by <b>17 January 2022</b>. Please note that only registered IAPs will continue to be notified of the BA process as it unfolds. All issues and concerns will be incorporated into a Comments and Responses Report (CRR) which will be included in the final BAR submitted to the DFFE.</p> <p><b>CONTACT PERSON / EAP (COMMENTS OR QUERIES):</b></p> <p><b>Contact Person:</b> Jacqui Davis (Nemai Consulting)  <b>Tel:</b> (011) 781 1730  <b>Fax:</b> (011) 781 1731  <b>Email:</b> <a href="mailto:jacquid@nemai.co.za">jacquid@nemai.co.za</a>  <b>Postal Address:</b> PO Box 1673, Sunninghill, 2157</p>

Kind regards,  
Jacqui

**Environmental Consultant****Nemai Consulting**

Tel: +27 11 781 1730

Fax: +27 11 781 1731

Mobile: +27 71 370 1168

Email: [jacquid@nemai.co.za](mailto:jacquid@nemai.co.za)Web: [www.nemai.co.za](http://www.nemai.co.za)

Address: 147 Bram Fischer Drive Ferndale, 2194, South Africa

Postal Address: PO Box 1673, Sunninghill, 2157, South Africa



Jacqui Davis

To: [Bcc](#) [Sarie Lombard@transnet.net](#); [andre.bodenstein@transnet.net](#); [thami.hadebe@transnet.net](#); [Raymond.Lehloma@transnet.net](#); [Vincent.Matabane@transnet.net](#); [maureen.kunene@transnet.net](#); [Nsumbulana.Mtsheni@transnet.net](#); [abrahamsn@nra.co.za](#); [brinkn@nra.co.za](#); [dumat@nra.co.za](#); [AbrahamsN@nra.co.za](#); [lou@nra.co.za](#); [lgskantoor@gmail.com](#); [info@assa.org.za](#); [christoph@assa.org.za](#); [shvini@assa.org.za](#); [mshethi@spvia.co.za](#); [wido@spvia.co.za](#); [kim@spvia.co.za](#); [lan@evet.org.za](#); [eb@evet.org.za](#); [delina@wessa.co.za](#); [morgan.griffiths@wessa.co.za](#); [wessanc@yahoo.com](#); [info@wessa.co.za](#); [info@birdlife.org.za](#); [conservation@birdlife.org.za](#); [energy@birdlife.org.za](#); [daniel.marnewick@birdlife.org.za](#); [advocacy@birdlife.org.za](#); [simon.gear@birdlife.org.za](#); [energy@birdlife.org.za](#); [J.Dini@sanbi.org.za](#); [K.Maze@sanbi.org.za](#); [kate@iws-sa.co.za](#); [chair@sabaa.org.za](#); [nico.vandervalt@sanparks.org](#); [operations@mineralcommodities.com](#); [stroh@caa.co.za](#); [khozad@caa.co.za](#); [PretoriusC@caa.co.za](#); [lutz-bibliothek@matzika.co.za](#); [lizelleburger@hotmail.co.za](#); [myburgh@caa.co.za](#)

Reply Reply All Forward Thu 25/11/2021 16:56

Dear Potentially Interested and Affected Parties (IAPs).

<b>VOORGESTELDE SERE FOTOVOLTAÏESE SONKRAG AANLEG FASE 1A EN VERWANTE INFRASTRUKTUUR, WESKAAP PROVINSIE</b> <b>KENNISGEWING AANGAANDE DIE AANSOEK VIR OMGEWINGSMAGTIGING</b>	<b>PROPOSED SERE SOLAR PHOTOVOLTAIC PLANT PHASE 1A, WESTERN CAPE</b> <b>NOTICE OF APPLICATION FOR ENVIRONMENTAL AUTHORISATION</b>
<p>Hierdie kennisgewing word gegee kragtens die Omgewingsimpakbepalingsregulasies (Staatskennisgewing Nr. R. 982 van 4 Desember 2014, soos gewysig), kragtens die Wet op Nasionale Omgewingsbestuur (Wet Nr. 107 van 1998) ("NEMA").</p> <p><b>PROJEKTOORSIG:</b></p> <p>Eskom (die Aansoeker) beplan die ontwikkeling van 'n fotovoltaïese sonkrag aanleg om die dringende noodsaaklikheid van bykomende opwekkingsvermoë aan te spreek. Die voorgestelde aanleg word binne Eskom se bestaande SERE windplaas (Lot 1862 Olifants Rivier Nedersetting) in die Matsikama Plaaslike Munisipaliteit in die Weskaap beplan. Die opwekkingsvermoë van die voorgestelde Sere Fotovoltaïese Sonkrag Aanleg Fase 1A is 19.9MW hernubare sonenergie. Die beplande terrein is kleiner as 20 hektaar. Die verwante infrastruktuur sluit toegangspaaie, ondergrondse 22-33kV kraglyn na die bestaande Skaapvlei Substasie en 'n beheerkamer in.</p> <p><b>AANSOEK VIR OMGEWINGSMAGTIGING:</b></p> <p>Nemai Consulting (Edms) Bpk is deur die Aansoeker as die Omgewingsimpakbepalingspraktisyn aangestel om vir omgewingsmagtiging aansoek te doen en om 'n Basiese Bepalingsproses te onderneem ingevolge Regulasie 19 en Regulasie 20 van Staatskennisgewing Nr. R. 982 van 4 Desember 2014, soos gewysig. Die Departement van Bosbou, Visserye en die Omgewing ("DFFE") is die bevoegde owerheid met betrekking tot die aansoek.</p> <p>Die besonderhede van die assessering, bevindinge van die spesialis-studies, die impakte en gepaardgaande versagende maatreëls sowel as die kommentaar ontvang vanaf Belanghebbende en Geëffekteerde Partye sal in die Basiese Bepalingsverslag saamgevat word. 'n Afskrif van die voorlopige Basiese Bepalingsverslag sal vir openbare besigtiging beskikbaar gestel word. Daarna sal die Basiese Bepalingsverslag gefinaliseer en ingedien word by die DFFE.</p> <p><b>OPENBARE DEELNAME:</b></p> <p>'n Openbare deelnameproses sal ingevolge Hoofstuk 6 van die Omgewingsimpakbepalingsregulasies, soos gewysig, NEMA en die Openbare Deelnameplan wat deur DFFE goedgekeur is, uitgevoer word. 'n Agtergrondinligtingsdokument en Terugvoeringsvorm is op die Nemai Consulting webwerf (<a href="https://nemai.co.za/environmental/downloadable-documents/">https://nemai.co.za/environmental/downloadable-documents/</a>) beskikbaar. Om as 'n Belanghebbende en Geëffekteerde Party te registreer en om kommentaar voor te lê, stuur asb. u naam, kontakbesonderhede en enige kommentaar na die kontakpersoon hieronder aangedui teen <b>17 Januarie 2022</b>. Slegs Belanghebbende en Geëffekteerde Partye sal voortaan van die proses op hoogte gehou word. Alle besware sal in 'n Kommentaar en Terugvoeringsverslag saamgevat word. Die finale Basiese Bepalingsverslag wat by DFFE ingedien sal word, sal die Kommentaar en Terugvoeringsverslag insluit.</p> <p><b>KONTAKBESONDERHEDE VAN OMGEWINGBEPALINGSPRAKTISYN (VIR KOMMENTAAR OF NAVRAE):</b></p> <p><b>Kontakpersoon:</b> Jacqui Davis (Nemai Consulting)  <b>Tel:</b> (011) 781 1730  <b>Faks:</b> (011) 781 1731  <b>E-pos:</b> <a href="mailto:jacquid@nemai.co.za">jacquid@nemai.co.za</a>  <b>Posadres:</b> PO Box 1673, Sunninghill, 2157</p>	<p>Notice is hereby given in terms of the Environmental Impact Assessment (EIA) Regulations (Government Notice No. R. 982 of 4 December 2014, as amended), in terms of the National Environmental Management Act (Act No. 107 of 1998).</p> <p><b>PROJECT OVERVIEW:</b></p> <p>Eskom Holdings SOC Ltd. (the Applicant) aims to address the urgent need for additional generation capacity through the proposed construction of a solar photovoltaic (PV) plant within Eskom's existing SERE Wind Farm facility (Lot 1862 Olifants River Settlement) located within Matsikama Local Municipality in the Western Cape Province. The proposed SERE Solar PV Plant Phase 1A will allow for a generation capacity of 19.9MW renewable solar energy with a less than 20ha footprint. The associated infrastructure includes access roads, control buildings, and underground 22-33kV power line linking to the existing Skaapvlei Substation.</p> <p><b>APPLICATION FOR ENVIRONMENTAL AUTHORISATION:</b></p> <p>Nemai Consulting (Pty) Ltd was appointed by the Applicant as the Environmental Assessment Practitioner (EAP) to conduct the Basic Assessment Process contemplated in Regulation 19 and Regulation 20 of Government Notice No. R. 982 of 4 December 2014, as amended, for the proposed Project. The Competent Authority to decide on the application is the Department of Forestry, Fisheries and the Environment (DFFE).</p> <p>The Basic Assessment Report (BAR) will contain the details of the assessment conducted and include all comments from Interested and Affected Parties (IAPs), specialist investigations, and impacts that have been identified and proposed mitigation measures to counter potential impacts. A copy of the Draft BAR will be made available for public review, prior to finalisation and submission of the BAR to the DFFE.</p> <p><b>PUBLIC PARTICIPATION:</b></p> <p>A public participation process will be conducted in terms of Chapter 6 of the EIA Regulations, as amended, of the NEMA, and the DFFE approved project Public Participation Plan. A Background Information Document (BID) and Reply Form are available on the Nemai Consulting website (<a href="https://nemai.co.za/environmental/downloadable-documents/">https://nemai.co.za/environmental/downloadable-documents/</a>). To ensure you are identified as an IAP, please submit your name, contact information and comment regarding the proposed development, by means of e-mail, fax or post to the EAP below at Nemai Consulting by <b>17 January 2022</b>. Please note that only registered IAPs will continue to be notified of the BA process as it unfolds. All issues and concerns will be incorporated into a Comments and Responses Report (CRR) which will be included in the final BAR submitted to the DFFE.</p> <p><b>CONTACT PERSON / EAP (COMMENTS OR QUERIES):</b></p> <p><b>Contact Person:</b> Jacqui Davis (Nemai Consulting)  <b>Tel:</b> (011) 781 1730  <b>Fax:</b> (011) 781 1731  <b>Email:</b> <a href="mailto:jacquid@nemai.co.za">jacquid@nemai.co.za</a>  <b>Postal Address:</b> PO Box 1673, Sunninghill, 2157</p>

Kind regards,  
Jacqui

**Environmental Consultant****Nemai Consulting**

Tel: +27 11 781 1730

Fax: +27 11 781 1731

Mobile: +27 71 370 1168

Email: [jacquid@nemai.co.za](mailto:jacquid@nemai.co.za)Web: [www.nemai.co.za](http://www.nemai.co.za)

Address: 147 Bram Fischer Drive Ferndale, 2194, South Africa

Postal Address: PO Box 1673, Sunninghill, 2157, South Africa

# Oud-landbouers klim Karookop om hulde te bring

Berig en foto:  
Mariaan Smuts

**CLANWILLIAM:** Oudleerders van die destydse Hoër Landbouskool Augsburg het Woensdag, 17 November, weer na baie jare Karookop aangedurf. André van Dyk, bekend as Sandduin, wat in 1978 gematrikuleer het en van 2009 in Nebraska, Amerika woonagtig en werksaam is, kuier tans in Suid-Afrika. Een van sy grootste wense was om weer saam met 'n paar van sy ou maters Karookop te klim omdat hy al die vorige reünies misgeloop het. Die rede hiervoor was om hulde te bring aan die ontslapte Chris Breytenbach en oudlandbouers en/of hul gades en/of hul kinders wat hul aan die dood afgestaan het.

Die manne het ook hulde gebring aan Jacobus (Kraai 1981) Smit wat sedert 1989 'n kwadruplegiese lewe lei as gevolg van 'n motorongeluk. Smit het reeds om 04:00 Woensdag vanaf Quasar House, Parow, vertrek na Clanwilliam en is na die lang dag weer terug Kaap toe. Hierdie opoffering en om sy alma maters van bo-op Karookop te aanskou, terwyl hulle geklim het, was vir Smit baie spesiaal.

Heelwat oudleerders (oudste gematrikuleer in 1975 en jongste in 1997) het

deelgeneem aan die verrigtinge. 'n Paar van die manne wat in hul jong dae Karookop in rekordtye van 1 minuut 45 sekondes uitgehardloop het, het die tog met kieres aangepak en sonder enige ongevalle bo uitgeklim. Hulle het mekaar goed ingepraat en ondersteun.

Gelukkig het die weer mooi saamgespeel en was dit heerlijk koel op Karookop. Cobus van Collier, hoof van ALG, het die verrigtinge met skriflesing en gebed geopen en self die klimmers teen Karookop uit vergesel. Riaan (1982) en Sanet en Zyl en Marlene van Dyk het reggestaan om die moeë manne te lawe met koue koeldranke, water en heerlike tuisgebakte vetkoekies en worsbroodjies. Sanet en Marlene was albei leerders van die destydse Hoërskool Clanwilliam.

Jacques de Beer, voorsitter van die Oud Studentebond(OSB), spreek die hoop uit



Die oud-landbouers saam met Kraai Smit en Sandduin bo-op Karookop.

dat hierdie saamstaan van oudleerders, wat daardie jare saam swaar gekry het, saam lekker tye gehad het, 'n boodskap sal uitdra aan die huidige onderwysers en leerders van ALG. Die manne het groot respek by onderwysers soos Breytenbach, voormalige koshuisvader van Huis Awie van der Merwe, geleer en na al die jare is dit steeds deel van hul lewenstyl, daarom dra hul met hul dade steeds die boodskap uit.

Die tradisie dat nuwe standaard 6 leerders van die Landbouskool Karookop moes uit-

klim of hardloop, om as ware Landbouers aanvaar te word, kom reeds baie jare aan. Van Collier noem dat hy baie graag weer die tradisie wil terugbring met die graad 8 leerders, nadat hul, hul kuikenkamp voltooi het, hy wil ook die matrieks na hul Swanesang die kop laat uitklim.

De Beer noem dat die OSB 'n groot makietie beplan vir die naweek van 18 tot 20 Maart 2022 en spreek die hoop uit dat soveel moontlik oud-landbouers die naweek by hul sal aansluit.

## Skaakspeler wil graag toernooi bywoon

Berig: Annemarie Schoeman  
Foto: Verskaf

**LUTZVILLE:** Chadlin Booyesen, 'n 10-jarige graad 4 leerder van Uitkyk Primêr, word jaarliks as Skaakspeler van die Jaar aangewys. Booyesen is weereens gekies om WP by die SAJCC (South African Junior Chess Championships) vanaf 3 tot 11 Januarie in Boksburg te verteenwoordig. Hier gaan hy ook aan die Wildcard-toernooi deelneem.

Hy is nie net goed in skaak nie, maar op akademiese gebied presteer hy ook uitmuntend. Sy ouers wil graag 'n Nasionale Braaidag op 3 Desember hou om fondse in te samel. Hul benodig borge vir hoender, wors, aart-appels, wortels en meel vir roosterbrood. Enige vorm van donasies is ook welkom, want sy ouers wil hom graag self tot in Boksburg neem. Sy moeder, Angela kan gekontak word by 083 794 2665 of

angelabooyesen10@gmail.com

Volgens Lynette Prent, CWP nasionale hoofbestuurder is dit 'n merkwaardige prestasie en 'n uitsonderlike eer vir hom om gekies te word en sy streek te verteenwoordig, veral met inagneming van die enorme toename in die gewildheid en vlak van skaak die afgelope paar jaar. Die feit is egter dat skaak 'n groot finansiële uitgawe is vir ouers.

Die koste per speler vir die Junior Nasionale Toernooi beloop ongeveer R10 000 (registrasie, kleredrag, administrasie-fooie, afrigtingsfooie, vervoer en verblyf). Aangesien skaak nie een van die belangrike sportkodes in Suid-Afrika is nie, maak die CWP baie staat op individue en besighede om die spelers by te staan om op hierdie vlak mee te ding. Prent noem dat dit 'n jammerte sal wees as die besonderse talentvolle, hardwerkende skaakspe-

ler hierdie geleentheid sou misloop weens 'n gebrek aan finansies.

Kontantdeposito's kan direk aan die Chess Western Province-jeugrekening gemaak word. Bankbesonderhede is as volg; Chess Western Province Youth Bank: Standard Bank. Takkode: 020009. Rekeningnummer: 070423849. Gebruik asseblief SAJCC Chadlin Booyesen as 'n verwysing.



Chadlin Booyesen.

## Hoofseun deel van konferensie

Berig en foto:  
Verskaf

**VREDENDAL:** Hoërskool Vredendal se hoofseun, **Cee-Jay Isaacs (foto onder)**, is een van 50 jeugleiers in die Wes-, Oos- en Noord-Kaap wat gekeur is om deel te wees van die 63ste Jeugleierskonferensie van Die Burger. Vanjaar se Konferensie word 13 tot 15 Desember aangebied.



## LOST OR DESTROYED DEED

Notice is hereby given in terms of Regulation 68 (1) of the Deeds Registries Act, 1937, of the intention to apply for the issue of a certified copy of

**CERTIFICATE OF REGISTERED TITLE NUMBER T79893/1993**  
in favour of **MUNISIPALITEIT VIR GEBIED VAN VREDENDAL**

in respect of certain

**ERF 2254 A PORTION OF ERF 1088 VREDENDAL IN THE MUNICIPALITY MATZIKAMA DIVISION VANRHYSNDORP WESTERN CAPE PROVINCE.**

Which has been lost or destroyed

All interested persons having objection of the issue of such copy are hereby required to lodge the same in writing and/or telephonically with the Registrar of Deeds at CAPE TOWN at

Anoosha.Malasingh@drdlr.gov.za (021 464 7650) or Insaaf.Davids@drdlr.gov.za (021 464 7680) within two weeks after the date of the publication of this notice.

Dated at VREDENDAL on 9 NOVEMBER 2021.

Applicant:

**SWANEPOEL AND SWANEPOEL INC**  
Address: 3 Dorpstree, Vredendal, 8160  
Email: aktes@swanepoelprok.co.za  
Contact number: 027 213 1011

## KENNISGEWING AANGAANDE DIE AANSOEK VIR OMGEWINGSMAGTIGING

VOORGESTELDE SERE FOTOVOLTAÏESE SONKRAG AANLEG FASE 1A EN VERWANTE INFRASTRUKTUUR, WESKAAP PROVINSIE

Hierdie kennisgewing word gegee kragtens die Omgewingsimpakbepalingsregulasies van 2014 (Staatskennisgewing Nr. R. 982 van 4 Desember 2014, soos gewysig), kragtens die Wet op Nasionale Omgewingsbestuur (Wet Nr. 107 van 1998) (NEMA).

Eskom (die Aansoeker) beplan die ontwikkeling van 'n fotovoltaiiese sonkrag aanleg om die dringende noodsaaklikheid van bykomende opwekkingsvermoë aan te spreek. Die voorgestelde aanleg word binne Eskom se bestaande SERE windplaas in die Matzikama Plaaslike Munisipaliteit in die Wes-Kaap beplan. Die opwekkingsvermoë van die voorgestelde Sere Fotovoltaiiese Sonkrag Aanleg Fase 1A is 19.9MW hernubare sonenergie. Die verwante infrastruktuur sluit toegangspaaie, ondergrondse 22-33kV kraglyn na die bestaande Skaapvlei Substasie en 'n beheerkamer in.

Nemai Consulting is as die onafhanklike Omgewingsimpakbepalingspraktisyn aangestel om vir omgewingsmagtiging aansoek te doen en om 'n Basiese Bepalingsproses te onderneem. Die Departement van Bosbou, Visserye en die Omgewing is die bevoegde owerheid met betrekking tot die aansoek.

Om as 'n Belanghebbende en Geaffekteerde Party te registreer en om kommentaar voor te lê, stuur asb. u naam, kontakbesonderhede en enige kommentaar na die kontakpersoon hieronder aangedui teen 17 Januarie 2022. Slegs Belanghebbende en Geaffekteerde Partye sal voortaan van die proses op hoogte gehou word.

'n Agtergrondinligtingsdokument en terugvoeringsvorm is op die Nemai Consulting webwerf (<https://nemai.co.za/environmental/downloadable-documents/>) beskikbaar.

KONTAKBESONDERHEDE VAN OMGEWINGBEPALINGSPRAKTISYN (VIR KOMMENTAAR OF NAVRAE):

**Maatskappy:** Nemai Consulting  
**Kontakpersoon:** Jacqui Davis  
**Tel:** (011) 781 1730  
**Faks:** (011) 781 1731  
**E-pos:** JacquiD@nemai.co.za  
**Posadres:** Posbus 1673, Sunninghill, 2157



## NOTICE OF APPLICATION FOR ENVIRONMENTAL AUTHORISATION

PROPOSED SERE SOLAR PHOTOVOLTAIC PLANT PHASE 1A AND ASSOCIATED INFRASTRUCTURE, WESTERN CAPE PROVINCE.

Notice is hereby given in terms of the Environmental Impact Assessment (EIA) Regulations of 2014 (Government Notice No. R. 982 of 4 December 2014, as amended), in terms of the National Environmental Management Act (Act No. 107 of 1998) (NEMA).

Eskom Holdings SOC Ltd. (the Applicant) aims to address the urgent need for additional generation capacity through the proposed construction of a solar photovoltaic (PV) plant within Eskom's existing SERE Wind Farm facility located within Matzikama Local Municipality in the Western Cape Province. The proposed SERE Solar PV Plant Phase 1A will allow for a generation capacity of 19.9MW renewable solar energy. The associated infrastructure includes access roads, underground 22-33kV power line linking to the existing Skaapvlei Substation, and control buildings. Nemai Consulting has been appointed as the independent Environmental Assessment Practitioner (EAP) to apply for Environmental Authorisation through a Basic Assessment (BA) process. The Competent Authority to decide on the application is the National Department of Forestry, Fisheries and the Environment.

To register as an IAP and provide comment, please submit your name and contact information and any comments to the contact person below by 17/01/2022. Only registered IAPs will continue to be notified of the process as it unfolds such as dates of document review of the BA process.

A Background Information Document (BID) and Reply Form are available on the Nemai Consulting website (<https://nemai.co.za/environmental/downloadable-documents/>).

CONTACT PERSON / EAP (COMMENTS OR QUERIES):

**Company:** Nemai Consulting  
**Contact person:** Jacqui Davis  
**Tel:** (011) 781 1730  
**Fax:** (011) 781 1731  
**Email:** JacquiD@nemai.co.za  
**Postal address:** Posbus 1673, Sunninghill, 2157



## Ons Visie

Saam bou ons aan  
'n positiewe toekoms.



## Ons Missie

Om die stem vir beide produsente en plaaswerkers te wees. Om te netwerk met Rolspelers en saam te bou aan 'n beter landbougemeenskap en so ook 'n beter, veiliger, gesonder Matzikama. Om alle mense met waardigheid en respek te behandel.

Tel nr: 027 213 1087/  
084 487 4174

Epos: lgokantoor@gmail.com

# VRYDAGNUUS

#43/2021;26/11/ 2021

Saam bou  
ons aan 'n  
positiewe  
toekoms

## PAAIE

### DIE FRUSTRASIE VIR BAIE

'n Beter,  
veiliger,  
gesonder  
Matzikama

Berig deur Jaap Mostert

### Die toestand van ons paaie – 'n teer punt vir baie van ons produsente. Is die paaie in ons omgewing op standaard, word dit gereeld geskraap, is ons tevrede?

Ek het onlangs 'n artikel gelees wat aandui dat boere in die Vrystaat begin het om self paaie te herstel in hul omgewing. Hier is 'n uitsnit daarvan:

*"Met die feestyd op hande en die groot somerreëns wat voorspel word, is talle boere reg oor die Vrystaat besig om self paaie te herstel in 'n poging om vakansiegangers veilig te hou en insetprodukte vir die plantseisoen na hul plase te vervoer.*

*Volgens dr. Jack Armour, kommersiële bestuurder van Vrystaat Landbou (VL), het boere geen ander opsie as om self in te spring en paaie te herstel nie aangesien die staat gesloer het om klein ontwikkelingskontraakteurs aan te stel om paaie te probeer herstel.*

*'Buiten die koste om landbou-insetprodukte te vervoer, het talle boere ook breekskade aan voertuie gehad en dit het tot die geweldige hoë insetkoste dié seisoen bygedra,' sê Armour. Armour het bevestig dat VL 'n sterk bewoorde brief aan die Vrystaatse LUR vir polisie, paaie en verkeer gerig het waarin 'n beroep op die departement gedoen word om ontwikkeling- en werkskeppingskemas te staak en om terug te keer na die kontaktering van bekwaame siviele ingenieursfirmas om die werk behoorlik te doen.*

*'VL het Dinsdag met die LUR vergader en beklemtoon dat die hulp van die boere om die paaie self te probeer rybaar kry, nie volhoubaar is nie, maar slegs uit nood gedoen word. Die LUR het op sy beurt boere gevra om hande te neem met die staat en saam die paaie te takel aangesien die staat nie meer oor fondse beskik nie. Die LUR het aangedui dat hy self ondersoek ingestel het na die 'geel-vloot' wat deur VL aangemeld is. Hy het 40 padskrapers gekry en het onderneem om dit onmiddellik te ontplooi. VL het uitgewys dat deel van die swak prestasies van die 'geel-vloot' ook die tekort aan ervare opgeleide padskrapers is.'*

*is.' Francois Wilken, VL se president, het tydens die vergadering ook aan die LUR uitgewys dat boere uitgeput is omdat hulle snags self patrollie ry om hul landelike gemeenskappe te beveilig en ook hul vee op te pas. Hy het gesê die boere is boonop nog ook op hulself aangewese om rampe soos brande en sprinkane te bestry omdat die staat nie hul verpligtinge nakom nie. 'Daar kan nie van boere verwag word om nog paaie ook te herstel weens die staat se onvermoë nie,' sê Wilken. Wilken het gesê boere se primêre rol is die produksie van bekostigbare voedsel vir die mense van Suid-Afrika.*

*VL het na aanleiding van 'n regsopinie 'n versoek aan landbouverenigings gerig om hulle paaie in orde van lewensgevaarlikheid te rangskik, wat dan aan hulle distrik se paaiebeampte oorhandig sal word. Die departement kan dan potensieel aanspreeklik gehou word vir enige verdere skade weens die haglike toestand van die paaie, as gevolg van 'n versuim om op te tree nadat die tekortkomings onder sy aandag gebring is.*

*VL moedig padgebruikers aan om eise in te dien indien enige skade weens swak paaie aan voertuie veroorsaak is."*

Ek is van mening dat ons hier in ons gebied ook van tyd tot tyd frustrasies het, maar dat ons ons seëninge kan tel, omdat ons darem nog nie by die punt is waar ons Vrystaatse vriende is nie.

Die LGO in samewerking met die Landbouverenigings in die Matzikama gebied, het 'n goeie verstandhouding met die Weskus Distrikmunisipaliteit (WKDM) met betrekking tot die instandhouding van paaie. LGO hanteer gereeld navrae van individue en kry vinnige reaksie van WKDM. Ons het verlede jaar en gaan weer hierdie jaar hulle versoek om hulle beplanning so te doen dat hulle al die paaie net voor die oesseisoen behoorlik skraap.

Mag u 'n geseënde week beleef!

Maar nog steeds asseblief... Wees VEILIG, wees GESOND, wees PARAAAT.

Vrede van huis tot huis.

*Wederom*

*Jaap Mostert*



**Clanwilliam Dam**

(VSK is Vol Stoor Kapasiteit in miljoen kubieke meter)

VSK	Hierdie Week	Verlede Week	Verlede Jaar
122.5	99.1%	99.9%	7.3%

### NAMAQUA AGRI (Pty) Ltd

Verskaffer van Landbouprodukte



Kontak ons vir alle tipes draad, omheiningmateriaal, houtpale, houtdroppers, watertenke, snoeitoerusting, ens.

#### Philip Viljoen

Tel: 0835099885

Email: info@oubenheim.com

Adres: Posbus 52 | Vredendal | 8160

BTW nr.: 4730276880

## LANDBOUWENKE:



**Die volgende landbouwenk is verskaf deur Gert Engelbrecht van Vinpro:**

“Met die reënweer oppad en die groeistadium waar ons nou korrelvergroting sien en die trosse begin “toe maak” is dit belangrik om goeie tydsberekening en goeie bedekking van spuite en spuitstowwe te verseker. Gebruik jou kennis van jou plaas en identifiseer blokke wat gewoonlik probleme gee. Die breek van blare om trosse bloot te stel is nou wel ‘n arbeids inset maar dit is by verre die beste manier om siektedruk te verlaag en spuit bedekking te verseker en is baie goedkoper as om probleme reg te spuit nadat dit uitbreek. Blare oop breek verbeter kleur en geur vorming ook en dit help ook met oog vrugbaarheid.”



**Die wenk is deur Raisins SA verskaf:**

“Somer manipulasies soos suier, lootuitdunning en lootposisionering moet wintersnoei aanvul. In gevalle van digte lower kan tip, top (slegs aan bokant van lower) en blaarverwydering addisioneel toegepas word om optimale lowerfunksionering te verseker, siektebestryding te vergemaklik en druijgehalte te verbeter.”



**Poen van der Westhuizen** het vir ons die wenk gestuur vir die **Veeteelt** produsente.

**Poen 082 897 8300**

“Indien u binnekort ram by die ooie bring, is dit nou ‘n uitstekende tyd om u ramme weekliks met 40ml Koringkiemolie te doseer. Boere sal verbaas wees wat dit aan u skape se lampersentasie maak.”

Groete, Poen



“Ons trek in week 48 en hou almal asems op vir die reën wat voorspel word en heel moontlik nie goed kan uitdraai vir ons vroeë kultivars wat al deurslaan. Vroeë rooi kultivars begin al hul ethephon kleur spuite kry.

Dit beteken ook dat daar moontlik vanaf die 8-10 Desember van ons eerste tafeldruie gepak gaan word.”



## Uitdrukking: Vol krupsies wees

### Betekenis:

Vol denkbeeldige kwale wees: Sy verveel hom tot sterwens toe met al haar krupsies. Die meisietjie ... (was) maer soos ‘n graatjie, ja, bleeksugtig en ... vol allerhande krupsies en kwale.

### Waar kom dit vandaan?

Krupsies is ‘n vervorming van Middelnederlands *corrupties* wat “bederf, veral van die liggaam” beteken het.

## Gedig: Varkleerbaadjie en klinknaelbroek

Boerneef (IW van der Merwe) (1897 – 1967)

Varkleerbaadjie en klinknaelbroek  
 ek is Baaiplek se skorriekoning  
 styfspanblous en nog stywerspanbroek  
 sys my morrie my morriedoring  
 dis sy en ek en ek en sy  
 wat die mouterbaik so heluitry  
 ons is een van Baaiplek se baie pare  
 raasbekskorrieenmorriesnare  
 maar ek is ammal se skorriekoning  
 en sys my lekkerdingmorriedoring  
 blits in die fles en blits innie lyf  
 wisenwragtag dan neuk dit styf  
 gee pad daar voor hier kom die koning  
 styf handommielyf sit my lekkerdingdoring



## RAAI RAAI RIEPA

1. Die elektriese trein ry van oos na wes teen 50 km/uur. ‘n Noordewind waai teen 75 km/uur. Watter kant toe gaan die trein se rook trek?
2. Ek is ‘n bal wat kan rol, maar nie kan bons (hop) of gegooi word nie. Wat is ek?

- 1 Geen rook – elektriese trein  
 2 ‘n Oogbal

# Gesondheidsfokus



November 2021



## WAT JY MOET WEET OOR DIABETES

### WAT IS DIE SIMPTOME/WAARSKUWINGSTEKENS VAN TIPE 2 DIABETES?

- oormatige urinering;
- oormatige dors;
- verhoogde aptyt;
- onverklaarbare gewigsverlies;
- moegheid/uitputting;
- gebrek aan belangstelling en konsentrasie;
- naarheid (opbring) en maagpyn (word dikwels met ander toestande verwar);
- 'n tinteling of gevoelloosheid in die hande of voete;
- onduidelike visie;
- gereelde infeksies; en/of
- wonde wat stadig gesond word.

## WAT JY MOET WEET OOR DIABETES

Gedurende November val die kollig op diabetes, met Wêreld diabetesdag wat op 14 November herdenk word. Diabetes is 'n siekte waaraan miljoene kinders en volwassenes dwarsoor die wêreld ly. Hier is wat jy oor diabetes moet weet.

### Wat is die risikofaktore vir tipe 2 diabetes?

Daar is verskeie risikofaktore vir tipe 2 diabetes. Dit sluit in:

- vetsugtigheid;
- swak dieet en fisiese onaktiwiteit;
- verhoogde ouderdom;
- insulienweerstandigheid; en
- 'n familiegeskiedenis van diabetes en volksgroep.

In Suid-Afrika is dit veral mense van Indiese oorsprong wat neig om diabetes te ontwikkel. Veranderinge in dieet en fisiese aktiwiteit wat gekoppel kan word aan vinnige verstedeliking het ook tot 'n skerp toename gelei in die aantal mense wat diabetes ontwikkel, 'n neiging wat veral onder swart Suid-Afrikaners voorkom.

### Hoe word diabetes behandel?

Tipe1 diabetes vereis gereelde insulien-inspuitings, maar die hoeksteen van die beheer van tipe 2 diabetes en die eerste strategie wat gevolg moet word, is dieet- en lewenstyl-aanpassings in die vorm van gesonder kos-keuses en gereelde oefening. As dit nie voldoende is nie, is daar verskillende soorte medikasie wat die vereiste vir insulien-inspuitings kan vertraag of selfs verhoed. Jou dokter sal jou in hierdie verband met raad kan bystaan.

### Kan diabetes genees word?

Nee, maar dit kan goed beheer word en kan diegene wat daaraan ly, in staat stel om lang, gesonde lewens te lei.

Indien jy meer wil weet oor diabetes, besoek gerus jou naaste kliniek en vra die verpleegpersoneel vir meer inligting.

## MATZIKAMA COVID 19 IMMUNISASIE SKEDULE

FASE 2

DEPARTEMENT GESONDHEID

NOVEMBER/DESEMBER 2021

SATERDAE

09:00-14:00

06 NOVEMBER 2021  
13 NOVEMBER 2021  
20 NOVEMBER 2021  
27 NOVEMBER 2021  
04 DESEMBER 2021

VREDENDAL SENTRAAL KLINIEK  
VREDENDAL NOORD KLINIEK  
VREDENDAL SENTRAAL KLINIEK  
KLAWER KLINIEK  
VREDENDAL NOORD KLINIEK

PLEK	DATUM
Bitterfontein Kliniek	19/11/2021
Dooringbaai Kliniek	07/12/2021
Ebenhaeser Kliniek	08/12/2021
Klawer Gemeenskapsaal	22/11/2021 – 25/11/2021
Kilprand Kliniek	25/11/2021
Koekensap Kliniek	09/12/2021
Lutzville Kliniek	Elke Woensdag, Donderdag en Vrydag
Lutzville Uittyk Gemeenskapsaal	06/12/2021
Lutzville – Wes Gemeenskapsaal	10/12/2021
Molisei Kliniek	24/11/2021
Nuwerus Kliniek	26/11/2021
Rietpoort Kliniek	22/11/2021
Stofkraal Kliniek	23/11/2021
Vanrhynsdorp Gemeenskap saal (Mekamag)	29/11/2021 – 01/12/2021
Vredendal Noord Gemeenskapsaal	08/11/2021 – 12/11/2021
Vredendal Suid Gemeenskapsaal	15/11/2021 – 19/11/2021



**EDK Office National**

**Hanrie Louw Branch Manager**

**Tel: 027 213 4411**

**Cell: 084 858 0825**

**Website: [www.edk.officenational.co.za](http://www.edk.officenational.co.za)**





## KOMPOS PROJEK VREDENDAL



**Dull to Green Organics**

**Ons Produk gee LEWE!**

**Uiteindelik deur vasbyt en bloedsweet, is ons by die punt waar ons die produk met trots kan bemark!**



**Ons produk is op SPAR en die Cape Garden Centre Kwekery se rakke.**

**U kan my ook direk kontak vir pryse.**

**Jan Tieties 064 813 7984**

# Jail n Bail

**Borg jou gunsteling Jailee!**

## Maskam Mall

### 27 November 2021

**Verhore begin 10:00 DONASIES WELKOM**

SKULDIG  
Adele de Waal

SKULDIG  
Edwin de Jongh

SKULDIG  
Gielle de Kock

SKULDIG  
Piet Otto

**#CANSAJailnBail**

MASKAM HALL

Vir meer inligting kontak  
Tossie Beukes - 074 149 6145 | tbeukes@cansa.org.za

072 197 9305  
071 867 3530

Tolvry 0800 22 66 22 | www.cansa.org.za

## stronger together



### \*NUUT\* AANGESIG-TOT-AANGESIG INLEIDENDE OPLEIDING KEER TERUG

Met die aanvang van die covid-19-pandemie het al ons opleiding geskuif na 'n aanlyn platform. Vanaf 2022 sal ons weer begin met aangesig-tot-aangesig opleiding om deelnemers die geleentheid te bied om weer in lewende lywe te vergader. Hierdie opleiding sal afskop met 'n "Opsporing, ontmoediging en hantering van gedwonge arbeid in agribesighede"-werkswinkel in die Wes-Kaap. Aanlyn werksinkels sal steeds oop bly vir deelnemers rondom die res van die land.

Sluit by hierdie inleidende werkswinkel aan om te leer hoe jou besigheid se arbeidstelsels kan verbeter deur ons gebruikersvriendelike beleide en kontrolelyns vir die mitigasie van arbeidsuitbuiting, te gebruik en aan te pas.

- Beskikbare werksinkeldatums:**
- 2 Februarie 2022 – Stellenbosch, Wes-Kaap
  - 22 Februarie 2022 – Aanlyn opleiding
  - 17 Maart 2022 – Aanlyn opleiding

### NUTTIGE HULPBRONNE – WERKERPLAKKATE EN -PAMFLETTE

Verhoog bewustheid onder jou personeel op plaasvlak deur ons werkerplakkate en -pamflette af te laai en te druk. Dit is beskikbaar in A4- en A5-grootte, asook in 6 verskillende tale. Dit is 'n wonderlike manier om werknemers te begin betrek by die rol wat hulle kan speel in die besigheid en hul wyer gemeenskap om gedwonge arbeid te hanteer. Om meer uit te vind,

**Vir meer inligting, kontak [info@stronger2gether.org](mailto:info@stronger2gether.org)**

Cape Town Weather Office  
2nd Floor, Oval Office Park  
Cape Town Int airport  
Freight Road  
Matroosfontein  
Cape Town

E-Mail: [factfc@weathersa.co.za](mailto:factfc@weathersa.co.za)  
Tel: 021 935 5700

**Likelihood**

High	
Medium	
Low	
Very Low	

4

Minimal / Minor / Significant / Severe

**South African Weather Service**

**IMPACT BASED WARNING** issue :10:09 on Wed 24 Nov 2021

**LEVEL 4 for Damaging Winds**

WARNING valid Thu 25 Nov 00:00 Until Sat 27 Nov 00:00

Affected DM / LM / Metro area
Beaufort West, Cape Agulhas, City of Cape Town, Hantam, Hessequa, Kannaland, Karoo Hoogland, Khâi-Ma, Laingsburg, M_Bitou, M_Cape Agulhas, M_Cape Agulhas, M_City of Cape town, M_George, M_Hessequa, M_Knysna, M_Mossel Bay, Mossel Bay, M_Overstrand, M_Saldanha Bay, M_Swartland, M_Table Bay, Overstrand, Prince Albert
Short Message
resulting in structural damage due to strong to gale force SE'ly to E'ly winds are expected along the coastline and coastal areas between Saldanha Bay and Plettenberg Bay, the eastern interior of Namakwa District (N.Cape) and eastern interior of W.Cape from Thursday until Saturday.
Discussion
An intense weather system will result in strong to gale force southeast to easterly winds (60-70km/h gusting 80-100km/h) between Saldanha Bay and Plettenberg Bay from Thursday afternoon until Saturday, moderating north of C. Point Friday morning. Over the interior, strong to gale force northeasterly winds will affect the eastern Namakwa District (N.Cape) and Western Cape, spreading to Garden Route by Friday. Saturday north-westerlies will develop along the N. Cape coast where it will be strong to near gale (25-27/11/2021).
Impacts
Difficulty in navigation at sea due to rough and choppy conditions can cause small vessels and personal water crafts of taking on water and capsizing. Short and localised disruption of small harbours (cargo operations) and beachfront activities can also be expected. Localised damage to formal and informal settlements is possible. High sided vehicles may be at risk of falling over as result of strong crosswinds. There is possibility of development and spread of runaway fires.
Instruction
Be aware of the following: - sudden cross winds if traveling especially between buildings, fallen trees or power lines. Small boats must stay away from the open sea and seek the shelter of a harbour, river estuary or protected bay.

Public Document: ISF v1.0

# KENNISGEWING AANGAANDE DIE AANSOEK VIR OMGEWINGSMAGTIGING

## VOORGESTELDE SERE FOTOVOLTAÏESE SONKRAG AANLEG FASE 1A EN VERWANTE INFRASTRUKTUUR, WESKAAP PROVINSIE

Nemai Consulting is as die onafhanklike Omgewingsimpakbepalingspraktisyn aangestel om vir omgewingsmagtiging aansoek te doen en om 'n Basiese Bepalingsproses te onderneem. Die Departement van Bosbou, Visserye en die Omgewing is die bevoegde owerheid met betrekking tot die aansoek.

Lees die kennisgewing hieronder. Onder die kennisgewing is ook 'n kaart aangeteken wat die ligging en omliggende geaffekteerde plase aandui.

### KENNISGEWING AANGAANDE DIE AANSOEK VIR OMGEWINGSMAGTIGING

#### VOORGESTELDE SERE FOTOVOLTAÏESE SONKRAG AANLEG FASE 1A EN VERWANTE INFRASTRUKTUUR, WESKAAP PROVINSIE

Hierdie kennisgewing word gegee kragtens die Omgewingsimpakbepalingsregulasies van 2014 (Staatskennisgewing Nr. R. 982 van 4 Desember 2014, soos gewysig), kragtens die Wet op Nasionale Omgewingsbestuur (Wet Nr. 107 van 1998) (NEMA).

Eskom (die Aansoeker) beplan die ontwikkeling van 'n fotovoltaïese sonkrag aanleg om die dringende noodsaaklikheid van bykomende opwekkingsvermoë aan te spreek. Die voorgestelde aanleg word binne Eskom se bestaande SERE windplaas in die Matzikama Plaaslike Munisipaliteit in die Weskaap beplan. Die opwekkingsvermoë van die voorgestelde Sere Fotovoltaïese Sonkrag Aanleg Fase 1A is 19.9MW hernubare sonenergie. Die verwante infrastruktuur sluit toegangspaaie, ondergrondse 22-33kV kraglyn na die bestaande Skaapvlei Substasie en 'n beheerkamer in.

Nemai Consulting is as die onafhanklike Omgewingsimpakbepalingspraktisyn aangestel om vir omgewingsmagtiging aansoek te doen en om 'n Basiese Bepalingsproses te onderneem. Die Departement van Bosbou, Visserye en die Omgewing is die bevoegde owerheid met betrekking tot die aansoek.

Om as 'n Belanghebbende en Geaffekteerde Party te registreer en om kommentaar voor te lê, stuur asb. u naam, kontakbesonderhede en enige kommentaar na die kontakpersoon hieronder aangedui teen **17/01/2022**. Slegs Belanghebbende en Geaffekteerde Partye sal voortaan van die proses op hoogte gehou word.

#### KONTAKBESONDERHEDE VAN OMGEWINGBEPALINGSPRAKTISYN (VIR KOMMENTAAR OF NAVRAE):

**Maatskappy:** Nemai Consulting

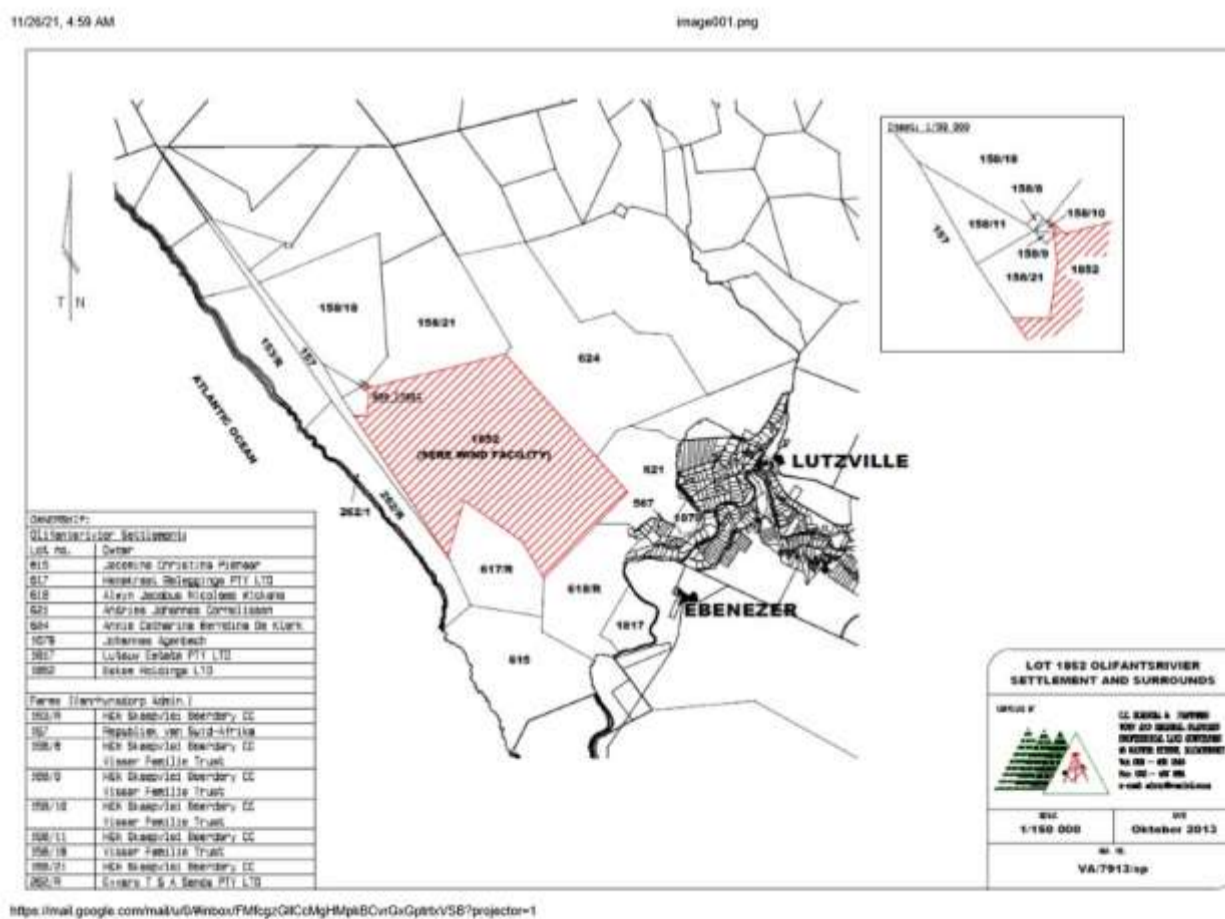
**Kontakpersoon:** Jacqui Davis

**Tel:** (011) 781 1730

**Faks:** (011) 781 1731

**E-pos:** JacquiD@nemai.co.za

**Posadres:** Posbus 1673, Sunninghill, 2157



**VOORGESTELDE SERE FOTOVOLTAÏESE SONKRAG  
AANLEG FASE 1A EN VERWANTE INFRASTRUKTUUR,  
WESKAAP PROVINSIE**

**KENNISGEWING AANGAANDE DIE AANSOEK VIR  
OMGEWINGSMAGTIGING**

**PROPOSED SERE SOLAR PHOTOVOLTAIC PLANT  
PHASE 1A, WESTERN CAPE**

**NOTICE OF APPLICATION FOR ENVIRONMENTAL  
AUTHORISATION**

Hierdie kennisgewing word gegee kragtens die Omgewingsimpakbepalingsregulasies (Staatskennisgewing Nr. R. 982 van 4 Desember 2014, soos gewysig), kragtens die Wet op Nasionale Omgewingsbestuur (Wet Nr. 107 van 1998) ("NEMA").

**PROJEKOORSIG:**

Eskom (die Aansoeker) beplan die ontwikkeling van 'n fotovoltaïese sonkrag aanleg om die dringende noodsaaklikheid van bykomende opwekkingsvermoë aan te spreek. Die voorgestelde aanleg word binne Eskom se bestaande SERE windplaas (Lot 1862 Olifants Rivier Nedersetting) in die Matsikama Plaaslike Munisipaliteit in die Weskaap beplan. Die opwekkingsvermoë van die voorgestelde Sere Fotovoltaïese Sonkrag Aanleg Fase 1A is 19.9MW hernubare sonenergie. Die beplande terrein is kleiner as 20 hektaar. Die verwante infrastruktuur sluit toegangspaaie, ondergrondse 22-33kV kraglyn na die bestaande Skaapvlei Substasie en 'n beheerkamer in.

**AANSOEK VIR OMGEWINGSMAGTIGING:**

Nemai Consulting (Edms) Bpk is deur die Aansoeker as die Omgewingsimpakbepalingspraktisyn aangestel om vir omgewingsmagtiging aansoek te doen en om 'n Basiese Bepalingsproses te onderneem ingevolge Regulasie 19 en Regulasie 20 van Staatskennisgewing Nr. R. 982 van 4 Desember 2014, soos gewysig. Die Departement van Bosbou, Visserye en die Omgewing ("DFFE") is die bevoegde owerheid met betrekking tot die aansoek.

Die besonderhede van die assessering, bevindinge van die spesialis-studies, die impakte en gepaardgaande versagtende maatreëls sowel as die kommentaar ontvang vanaf Belanghebbende en Geaffekteerde Partye sal in die Basiese Bepalingsverslag saamgevat word. 'n Afskrif van die voorlopige Basiese Bepalingsverslag sal vir openbare besigtiging beskikbaar gestel word. Daarna sal die Basiese Bepalingsverslag gefinaliseer en ingedien word by die DFFE.

**OPENBARE DEELNAME:**

'n Openbare deelnameproses sal ingevolge Hoofstuk 6 van die Omgewingsimpakbepalingsregulasies, soos gewysig, NEMA en die Openbare Deelnameplan wat deur DFFE goedgekeur is, uitgevoer word. 'n Agtergrondinligtingsdokument en Terugvoeringsvorm is op die Nemai Consulting webwerf (<https://nemai.co.za/environmental/downloadable-documents/>) beskikbaar. Om as 'n Belanghebbende en Geaffekteerde Party te registreer en om kommentaar voor te lê, stuur asb. u naam, kontakbesonderhede en enige kommentaar na die kontakpersoon hieronder aangedui teen **17 Januarie 2022**. Slegs Belanghebbende en Geaffekteerde Partye sal voortaan van die proses op hoogte gehou word. Alle besware sal in 'n Kommentaar en Terugvoeringsverslag saamgevat word. Die finale Basiese Bepalingsverslag wat by DFFE ingedien sal word, sal die Kommentaar en Terugvoeringsverslag insluit.

**KONTAKBESONDERHEDE VAN OMGEWINGBEPALINGSPRAKTISYN (VIR KOMMENTAAR OF NAVRAE):**

**Kontakpersoon:** Jacqui Davis (Nemai Consulting)  
**Tel:** (011) 781 1730  
**Faks:** (011) 781 1731  
**E-pos:** [jacquid@nemai.co.za](mailto:jacquid@nemai.co.za)  
**Posadres:** PO Box 1673, Sunninghill, 2157

Notice is hereby given in terms of the Environmental Impact Assessment (EIA) Regulations (Government Notice No. R. 982 of 4 December 2014, as amended), in terms of the National Environmental Management Act (Act No. 107 of 1998).

**PROJECT OVERVIEW:**

Eskom Holdings SOC Ltd. (the Applicant) aims to address the urgent need for additional generation capacity through the proposed construction of a solar photovoltaic (PV) plant within Eskom's existing SERE Wind Farm facility (Lot 1862 Olifants River Settlement) located within Matsikama Local Municipality in the Western Cape Province. The proposed SERE Solar PV Plant Phase 1A will allow for a generation capacity of 19.9MW renewable solar energy with a less than 20ha footprint. The associated infrastructure includes access roads, control buildings, and underground 22-33kV power line linking to the existing Skaapvlei Substation.

**APPLICATION FOR ENVIRONMENTAL AUTHORISATION:**

Nemai Consulting (Pty) Ltd was appointed by the Applicant as the Environmental Assessment Practitioner (EAP) to conduct the Basic Assessment Process contemplated in Regulation 19 and Regulation 20 of Government Notice No. R. 982 of 4 December 2014, as amended, for the proposed Project. The Competent Authority to decide on the application is the Department of Forestry, Fisheries and the Environment (DFFE).

The Basic Assessment Report (BAR) will contain the details of the assessment conducted and include all comments from Interested and Affected Parties (IAPs), specialist investigations, and impacts that have been identified and proposed mitigation measures to counter potential impacts. A copy of the Draft BAR will be made available for public review, prior to finalisation and submission of the BAR to the DFFE.

**PUBLIC PARTICIPATION:**

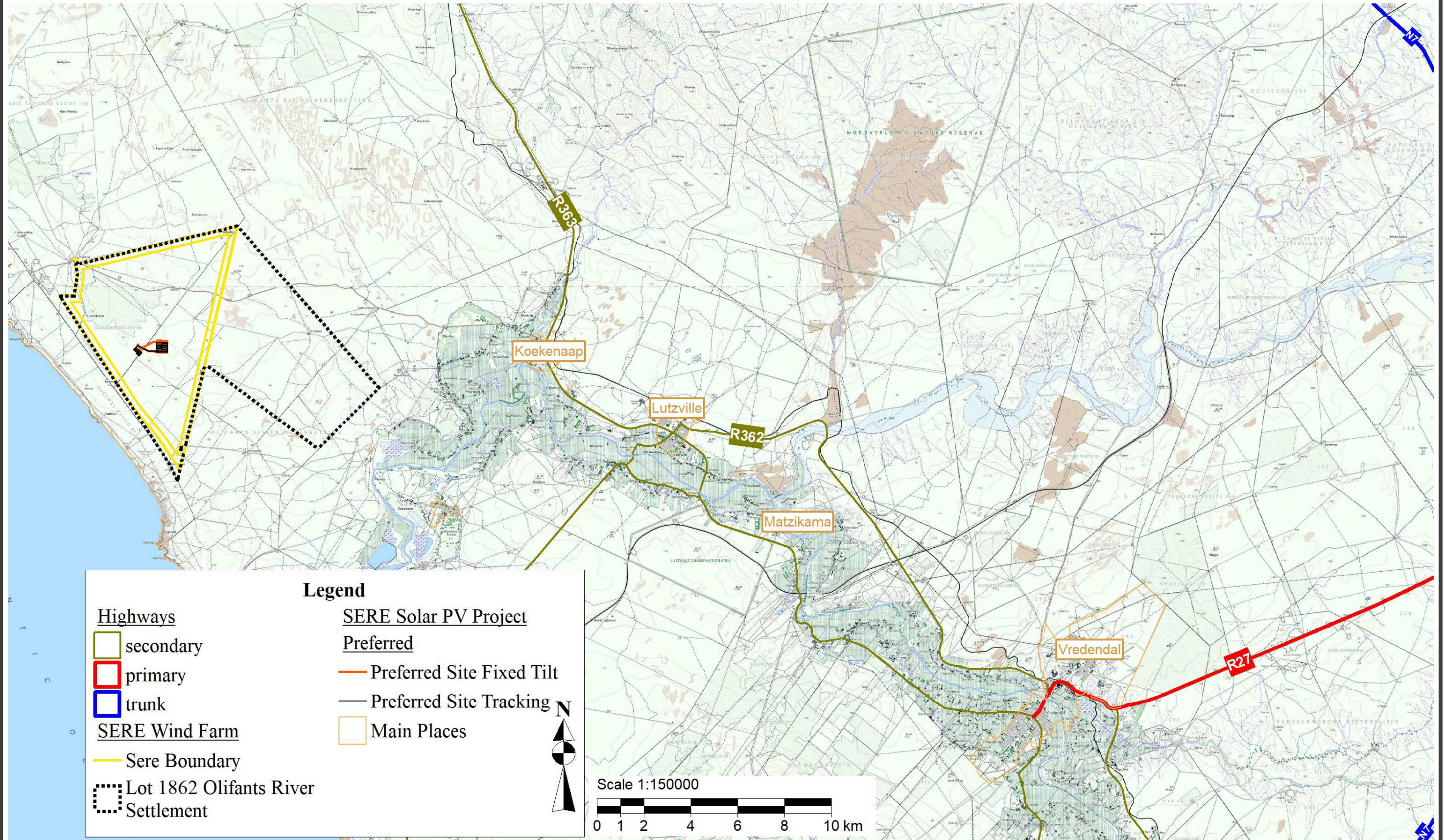
A public participation process will be conducted in terms of Chapter 6 of the EIA Regulations, as amended, of the NEMA, and the DFFE approved project Public Participation Plan. A Background Information Document (BID) and Reply Form are available on the Nemai Consulting website (<https://nemai.co.za/environmental/downloadable-documents/>). To ensure you are identified as an IAP, please submit your name, contact information and comment regarding the proposed development, by means of e-mail, fax or post to the EAP below at Nemai Consulting by **17 January 2022**. Please note that only registered IAPs will continue to be notified of the BA process as it unfolds. All issues and concerns will be incorporated into a Comments and Responses Report (CRR) which will be included in the final BAR submitted to the DFFE.

**CONTACT PERSON / EAP (COMMENTS OR QUERIES):**

**Contact Person:** Jacqui Davis (Nemai Consulting)  
**Tel:** (011) 781 1730  
**Fax:** (011) 781 1731  
**Email:** [jacquid@nemai.co.za](mailto:jacquid@nemai.co.za)  
**Postal Address:** PO Box 1673, Sunninghill, 2157

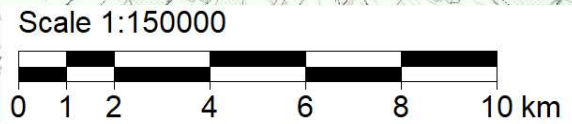
# LIGGINGSKAART / LOCALITY MAP

(LW: meer gedetailleerde kaarte is op aanvraag beskikbaar) / (Note: more detailed maps are available on request)



## Legend

- Highways**
  - secondary
  - primary
  - trunk
- SERE Wind Farm**
  - Sere Boundary
  - Lot 1862 Olifants River Settlement
- SERE Solar PV Project Preferred**
  - Preferred Site Fixed Tilt
  - Preferred Site Tracking
- Main Places**

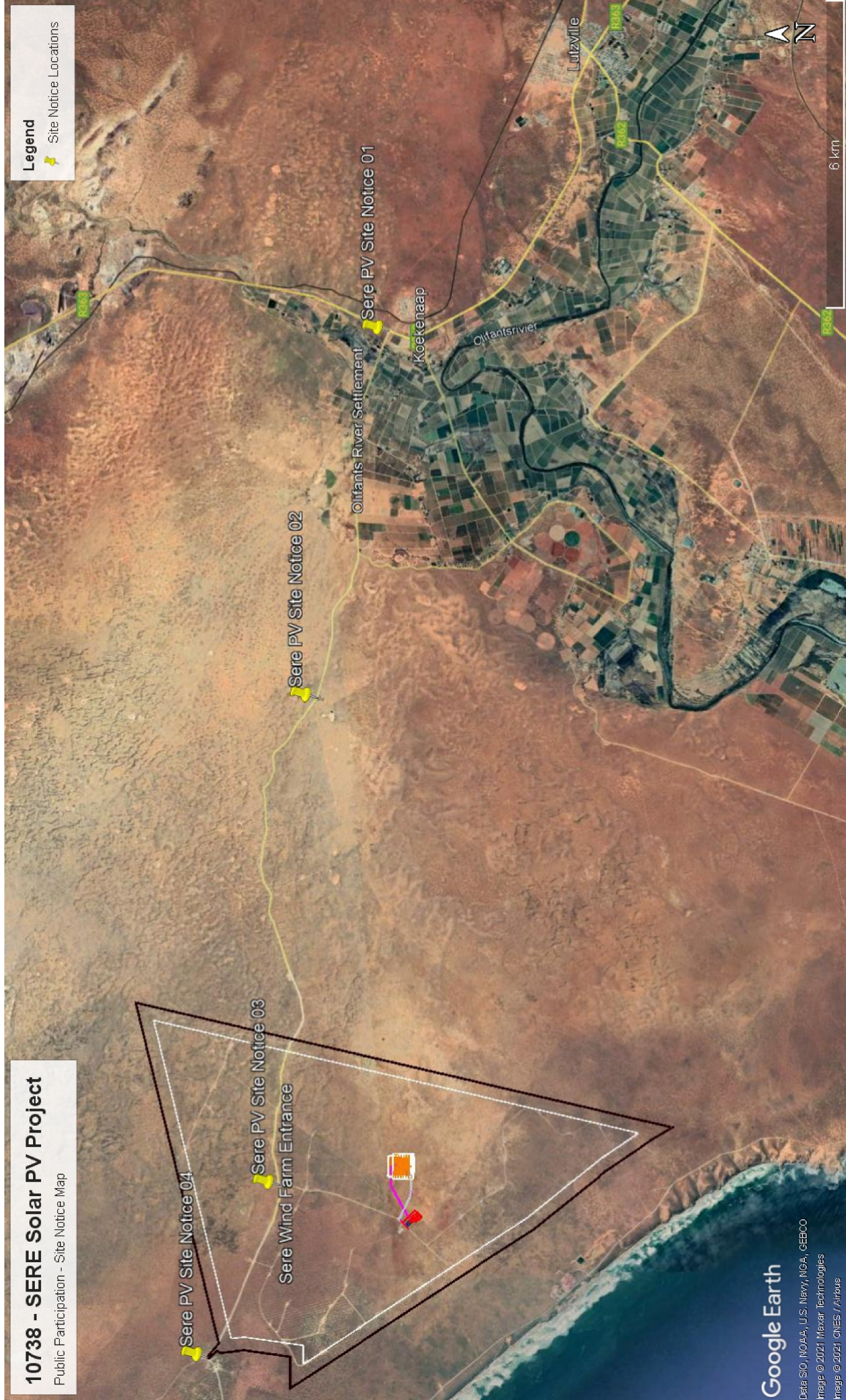


# 10738 - SERE Solar PV Project

Public Participation - Site Notice Map

## Legend


Site Notice Locations



Google Earth



Data SIO, NOAA, U.S. Navy, NGA, GEBCO  
Image © 2021 Maxar Technologies  
Image © 2021 CNES / Airbus

# 10738 – SERE Solar PV Project – Site Notice Register

Notice No.	Map Reference	GPS Co ordinates
1		31°31'15.42"S; 18°17'19.39"E



24 Nov 2021 10:35:06 am

<p><b>AANSOEKER / PROJECT APPLICANT:</b> Eskom Holdings SOC Ltd </p>	<p><b>OMGEWINGEVALUASIEPRAKTYK / ENVIRONMENTAL ASSESSMENT PRACTITIONER:</b> </p>
<p><b>VOORGESTELDE SERIE FOTOVOLTAÏESE SONKRAG AANLEG FASE 1A EN ERWANTE INFRASTRUKTUUR, WESKAAP PROVINSIE</b></p> <p><b>KENNISGEWING AANGAANDE DIE AANSOEK VIR OMGEWINGSMAGTIGING</b></p>	<p><b>PROPOSED SERE SOLAR PHOTOVOLTAIC PLANT PHASE 1A, WESTERN CAPE</b></p> <p><b>NOTICE OF APPLICATION FOR ENVIRONMENTAL AUTHORISATION</b></p>
<p>Hierdie kennisgewing word gepubliseer volgens die Omgewingsbeoordelingswet (Besluite van die Omgewingsbeoordelingswet van 1996 ("EMA").</p>	<p>Notice is hereby given in terms of the Environmental Impact Assessment (EIA) Regulations (Government Notice No. R1362 of 4 December 2014 as amended), in terms of the National Environmental Management Act (No. 107 of 1989).</p>
<p><b>PROEKOES:</b> Eskom (die Aansoekers) beplan die ontwikkeling van 'n fotovoltaïese sonkrag aanleg in die oostelike deel van die West-Kaapse provinsie. Die voorgestelde aanleg sal bestaan uit 'n reeks fotovoltaïese sonkrag panele wat op 'n reeks fotovoltaïese sonkrag panele in 'n 18 MW fotovoltaïese sonkrag aanleg. Die aanleg sal 'n reeks fotovoltaïese sonkrag panele in 'n 18 MW fotovoltaïese sonkrag aanleg. Die aanleg sal 'n reeks fotovoltaïese sonkrag panele in 'n 18 MW fotovoltaïese sonkrag aanleg.</p>	<p><b>PROJECT OVERVIEW:</b> Eskom Holdings SOC Ltd (the Applicant) aims to address the urgent need for additional generation capacity through the proposed construction of a solar photovoltaic (PV) plant within Eskom's existing 18 MW solar facility (the 18MW Solar Facility) located within Matieland Local Municipality in the Western Cape Province. The proposed Sere Solar PV Plant Phase 1A will consist of a generation capacity of 18 MW installed solar energy with a solar PV array system and associated infrastructure including access roads, control buildings, and underground 22.5kV power lines leading to the existing Eskom substation.</p>
<p><b>AANSOEK VIR OMGEWINGSMAGTIGING:</b> Hierdie kennisgewing word gepubliseer in ooreenstemming met die Omgewingsbeoordelingswet (Besluite van die Omgewingsbeoordelingswet van 1996 ("EMA")) en die Omgewingsbeoordelingswet (Besluite van die Omgewingsbeoordelingswet van 1996 ("EMA")) en die Omgewingsbeoordelingswet (Besluite van die Omgewingsbeoordelingswet van 1996 ("EMA")).</p>	<p><b>APPLICATION FOR ENVIRONMENTAL AUTHORISATION:</b> Eskom Holdings SOC Ltd was appointed by the Applicant as the Environmental Assessment Practitioner (EAP) to conduct the EIA Assessment Process contemplated in Regulation 19 and 20 of Government Notice No. R1362 of 4 December 2014, as amended, for the proposed project. The Applicant's application is made to the Department of Forestry, Fisheries and the Environment (DFFE).</p>
<p><b>OPENBAARHEID:</b> Die Omgewingsbeoordelingswet en die Omgewingsbeoordelingswet (Besluite van die Omgewingsbeoordelingswet van 1996 ("EMA")) en die Omgewingsbeoordelingswet (Besluite van die Omgewingsbeoordelingswet van 1996 ("EMA")) en die Omgewingsbeoordelingswet (Besluite van die Omgewingsbeoordelingswet van 1996 ("EMA")).</p>	<p><b>PUBLIC PARTICIPATION:</b> A public participation process will be conducted in terms of Chapter 6 of the EIA Regulations, as amended, of the NEMA, and the DFFE approved project Public Participation Plan. A Public Participation Plan (PPP) will be developed and made available on the National Consulting website (www.nema.gov.za) and the DFFE website (www.dffe.gov.za) to ensure you are alerted to any participation opportunities. Please note that only registered MPs will continue to be notified of the process and accordingly will be included in the final EIA submitted to the DFFE.</p>
<p><b>KONTAKINFORMASIE VAN OMGEWINGSEVALUASIEPRAKTYK (VIR KOMMUNIKASIE OF BYWAGING):</b> Kontakpersoon: Jozep Doms (Senior Consulting) Tel: (021) 781 7200 E-pos: j.doms@nema.co.za Posaakadres: PO Box 9775, Sunningdale, 7157</p>	<p><b>CONTACT PERSON (FOR COMMENTS OR QUERIES):</b> Contact Person: Jozep Doms (Senior Consulting) Tel: (021) 781 7200 E-pos: j.doms@nema.co.za Postal Address: PO Box 9775, Sunningdale, 7157</p>

24 Nov 2021 10:34:45 am



2



31°30'30.34"S;  
18°12'48.86"E



24 Nov 2021 10:18:27 am

AANSOEKER / PROJECT APPLICANT: Eskom Holdings SOC Ltd Eskom

OMGEWINGBEPALINGSPRAKTYSYN / ENVIRONMENTAL ASSESSMENT PRACTITIONER: NEMA

**VOORGESTELDE SERE FOTOVOLTAÏESE SONKRAG AANLEG FASE 1A EN VERWANTE INFRASTRUKTUUR, WESKAAP PROVINSIE**  
KENNISGEWING AANGAANDE DIE AANSOEK VIR OMGEWINGSMAGTIGING

**PROPOSED SERE SOLAR PHOTOVOLTAIC PLANT PHASE 1A, WESTERN CAPE**  
NOTICE OF APPLICATION FOR ENVIRONMENTAL AUTHORISATION

Herde kennisgewing word gegee kragtens die Omgewingsimpakbepalingsregulasie (Staatskennisgewing N. van 1998) ("NEMA").

Notice is hereby given in terms of the Environmental Impact Assessment (EIA) Regulations (Government Notice No. R. 982 of 4 December 2014, as amended), in terms of the National Environmental Management Act (Act No. 107 of 1989).

**PROJEKOORSIG:**

Eskom (die Aansoeker) beplan die ontwikkeling van 'n fotovoltaïese sonkrag aanleg om die dringende noodsaaklikheid van bykomende opwekkingvermoë aan te spreek. Die voorgestelde aanleg word binne Eskom se bestaande SERE-windklass (Lot 1862 Olfants River Nedersetting) in die Matielikama Plaaslike Munisipaliteit in die Weskaap gebied. Die opwekkingvermoë van die voorgestelde Sere Fotovoltaïese Sonkrag Aanleg Fase 1A is 19.0MW hernubare sonenergie. Die beplande terrein is kleiner as 20 hektar. Die verwante infrastruktuur sluit toegangspaaie, ondergrondse 22-33kV kraglyne na die bestaande Skeapvlei Substansie en 'n beheerkamer in.

**PROJECT OVERVIEW:**

Eskom Holdings SOC Ltd (the Applicant) aims to address the urgent need for additional generation capacity through the proposed construction of a solar photovoltaic (PV) plant within Eskom's existing SERE Wind Farm facility (Lot 1862 Olfants River Settlement) located within Matielikama Local Municipality in the Western Cape Province. The proposed SERE PV Plant Phase 1A will allow for a generation capacity of 19.0MW renewable solar energy with a less than 20ha footprint. The associated infrastructure includes access roads, control buildings, and underground 22-33kV power line linking to the existing Skeapvlei Substation.

**AANSOEK VIR OMGEWINGSMAGTIGING:**

Nemal Consulting (Edms) Bpk is deur die Aansoeker as die Omgewingsimpakbepalingspraktyssyn aangestel om vir omgewingsmagtiging aansoek te doen en om 'n Basiese Bepalingsproses te onderneem ingevolge Regulasie 20 van Regulasie 20 van Staatskennisgewing N. R. 982 van 4 Desember 2014, soos gewysig, die Departement van Bosbou, Visserie en die Omgewing ("DFFE").

**APPLICATION FOR ENVIRONMENTAL AUTHORISATION:**

Nemal Consulting (Pty) Ltd was appointed by the Applicant as the Environmental Assessment Practitioner (EAP) to conduct the Basic Assessment Process contemplated in Regulation 20 of Government Notice No. R. 982 of 4 December 2014, as amended, for the proposed Project. The Competent Authority to decide on the application is the Department of Forestry, Fisheries and the Environment (DFFE).

Die besonderhede van die assessering, bevindinge van die spesialis-studies, die impakte en geparaardgande in die Basiese Bepalingsverslag saamgevat word. 'n Alskrif van die voorlopige Basiese Bepalingsverslag sal op oopbare besigging beskikbaar gestel word. 'n Alskrif van die voorlopige Basiese Bepalingsverslag sal op oopbare besigging beskikbaar gestel word. Daarna sal die Basiese Bepalingsverslag gefinaliseer en ingedien word by die DFFE.

The Basic Assessment Report (BAR) will contain the details of the assessment conducted and include all comments from Interested and Affected Parties (IAPs), specialist investigations, and impacts that have been identified and proposed mitigation measures to avert or minimise impacts. A copy of the Draft BAR will be made available for public review, prior to finalisation and submission of the BAR to the DFFE.

**OPENBARE DEELNAME:**

'n Opentbare deelnameproses sal ingevolge Hoofstuk 6 van die Omgewingsimpakbepalingsregulasie, soos gewysig, NEMA en die Opentbare Deelnameplan wat deur DFFE goedgekeur is, uitgevoer word. 'n A publiek deelnameproses sal ingevolge Hoofstuk 6 van die Omgewingsimpakbepalingsregulasie, soos gewysig, NEMA en die Opentbare Deelnameplan wat deur DFFE goedgekeur is, uitgevoer word. 'n A publiek deelnameproses sal ingevolge Hoofstuk 6 van die Omgewingsimpakbepalingsregulasie, soos gewysig, NEMA en die Opentbare Deelnameplan wat deur DFFE goedgekeur is, uitgevoer word. 'n A publiek deelnameproses sal ingevolge Hoofstuk 6 van die Omgewingsimpakbepalingsregulasie, soos gewysig, NEMA en die Opentbare Deelnameplan wat deur DFFE goedgekeur is, uitgevoer word. 'n A publiek deelnameproses sal ingevolge Hoofstuk 6 van die Omgewingsimpakbepalingsregulasie, soos gewysig, NEMA en die Opentbare Deelnameplan wat deur DFFE goedgekeur is, uitgevoer word.

**PUBLIC PARTICIPATION:**

A public participation process will be conducted in terms of Chapter 6 of the EIA Regulations, as amended, of the NEMA and the DFFE approved project Public Participation Plan. A Background Information Document (BID) and Reply Form are available on the Nemal Consulting website (<https://nemal.co.za/environmental/consultable/documents/>). To ensure you are identified as an IAP, please submit your name, contact information and comment regarding the proposed development, by means of e-mail, fax or post to the EAP below at Nemal Consulting by 17 January 2022. Please note that only registered IAPs will continue to be notified of the BA process as outlined. All issues and concerns will be incorporated into a Comments and Responses Report (CHR) which will be included in the final IAR submitted to the DFFE.

**KONTAKBESONDERHEDE VAN OMGEWINGBEPALINGSPRAKTYSYN (VIR KOMMENTAAR OF NAVRAE):**

Kontakpersoon: Jacqui Davis (Nemal Consulting)  
Tel: (011) 781 1720  
Faks: (011) 781 1721  
E-pos: jacqui@nemal.co.za  
Posadres: PO Box 1679, Sunninghill, 2157

**CONTACT PERSON - EAP (COMMENTS OR SUBMITS):**

Contact Person: Jacqui Davis (Nemal Consulting)  
Tel: (011) 781 1720  
Faks: (011) 781 1721  
Email: jacqui@nemal.co.za  
Postal Address: PO Box 1679, Sunninghill, 2157

24 Nov 2021 10:18:13 am

3




31°30'6.94"S;  
18° 6'49.63"E



24 Nov 2021 9:36:55 am

AANSOEKER / PROJECT APPLICANT: Eskom Holdings SOC Ltd 

OMGEWINGBEPALINGSPRAKTYSYN / ENVIRONMENTAL ASSESSMENT PRACTITIONER: 

**VOORGESTELDE SERE FOTOVOLTAÏESE SONKRAG AANLEG FASE 1A EN VERWANTE INFRASTRUKTUUR, WESKAAP PROVINSIE**

**PROPOSED SERE SOLAR PHOTOVOLTAIC PLANT PHASE 1A, WESTERN CAPE**  
NOTICE OF APPLICATION FOR ENVIRONMENTAL AUTHORISATION

**KENNISGEWING AANGAANDE DIE AANSOEK VIR OMGEWINGSMAGTIGING**

Hierdie kennisgewing word gegee kragtens die Omgewingsimpakbeoordelingswet (Staatskennisgewing Nr. R. 982 van 4 Desember 2014, soos gewysig), kragtens die Wet op Nasionale Omgewingsbestuur (Wet Nr. 107 van 1998) ("NEMA").

**PROJEKTOORSIG:**

Eskom (die Aansoeker) beplan die ontwikkeling van 'n fotovoltaïese sonkragsaanleg om die dringende noodsaaklikheid van bykomende opwekkingsvermoë aan te spreek. Die voorgestelde aanleg word binne Eskom se bestaande SERE windpark (Lot 1962 Ollivares River Nederzetting) in die Matielukwa Plaaslike Munisipaliteit in die Weskaap beslaan. Die opwekkingsvermoë van die voorgestelde Sere Fotovoltaïese Sonkragsaanleg Fase 1A is 19,9MW hernubare sonenergie. Die beplande termín is kleiner as 20 hekkar. Die verwante infrastruktuur sluit toegangspaaie, ondergrondse 22-33kV kraglyne na die bestaande Skaaipwiel Substansie en 'n beheerkamer in.

**AANSOEK VIR OMGEWINGSMAGTIGING:**

Nemal Consulting (Edms) Bpk is deur die Aansoeker as die Omgewingsimpakbeoordelingspraktisyngesagstempel 19 in Regulasie 20 van Staatskennisgewing Nr. R. 982 van 4 Desember 2014, soos gewysig. Die Departement van Bosbou, Visserij en die Omgewing ("DFPE") is die bevoegde owerheid met betrekking tot die aansoek.

Die besonderhede van die assessering, bevindings van die spesiaalstudies, die impakte en gepaardgaande in die Basiese Beoordelingsverslag saamgevat word. 'n Alskrif van die voorlopige Basiese Beoordelingsverslag sal vir word by die DFPE.

**OPENBARE DEELNAME:**

'n Openbare deelnameproses sal ingevolge Hoofstuk 6 van die Omgewingsimpakbeoordelingsregulasies, soos gewysig, NEMA en die Openbare Deelnameplan wat deur DFPE goedgekeur is, uitgevoer word. 'n <https://nema.co.za/submit-comment> en 'n <https://nema.co.za/submit-comment> is op die Nemal Consulting webwerf Geïnteresseerde Party 'n registreer en om kommentaar te voer te 16 Januarie 2022. Slags Belanghebbende en Geïnteresseerde Party sal voortaan van die proses op hoogte gehou word. Alle beware sal in 'n Kommentaar en die Kommentaar en 'n Registreeringsverslag saamgevat word. Die finale Basiese Beoordelingsverslag wat by DFPE ingedien sal word, sal die Kommentaar en 'n Registreeringsverslag inelief.

**KONTAKPERSOONERHEDIE VAN OMGEWINGBEPALINGSPRAKTYSYN (VIR KOMMENTAR OF NAVRAE):**

Kontakpersoon: Jacqui Davis (Nemal Consulting)  
Tel: (011) 781 1730  
Faks: (011) 781 1731  
E-pos: jacqu@nema.co.za  
Posadres: PO Box 1670, Sunninghill, 2157

Notice is hereby given in terms of the Environmental Impact Assessment (EIA) Regulations (Government Notice No. R. 982 of 4 December 2014, as amended), in terms of the National Environmental Management Act (Act No. 107 of 1998).

**PROJECT OVERVIEW:**

Eskom Holdings SOC Ltd (the Applicant) aims to address the urgent need for additional generation capacity through the proposed construction of a solar photovoltaic (PV) plant within Eskom's existing SERE Wind Farm facility (Lot 1962 Ollivares River Settlement) located within Matielukwa Local Municipality in the Western Cape Province. The proposed SERE Solar PV Plant Phase 1A will allow for a generation capacity of 19.9MW renewable solar energy with a less than 20ha footprint. The associated infrastructure includes access roads, control buildings, and underground 22-33kV power line linking to the existing Skaaipwiel Substation.

**APPLICATION FOR ENVIRONMENTAL AUTHORISATION:**

Nemal Consulting (Pty) Ltd was appointed by the Applicant as the Environmental Assessment Practitioner (EAP) to conduct the Basic Assessment Process contemplated in Regulation 19 and Regulation 20 of Government Notice No. R. 982 of 4 December 2014, as amended, for the proposed Project. The Competent Authority to decide on the application is the Department of Forestry, Fisheries and the Environment (DFPE).

The Basic Assessment Report (BAR) will contain the details of the assessment conducted and include all comments from Interested and Affected Parties (IAPs), specialist investigations, and impacts that have been identified and proposed mitigation measures to counter potential impacts. A copy of the Draft BAR will be made available for public review, prior to finalisation and submission of the BAR to the DFPE.

**PUBLIC PARTICIPATION:**

A public participation process will be conducted in terms of Chapter 6 of the EIA Regulations, as amended, of the NEMA, and the DFPE approved project Public Participation Plan. A Background Information Document (BID) and Reply Form are available on the Nemal Consulting website (<https://nema.co.za/environmental/downloadable-documents>). To ensure you are identified as an IAP, please submit your name, contact information and comment regarding the proposed development, by means of e-mail, fax or post to the EAP below at Nemal Consulting by 17 January 2022. Please note that only registered IAPs will continue to be notified of the BA process as it unfolds. All issues and concerns will be incorporated into a Comments and Responses Report (CRR) which will be included in the final BAR submitted to the DFPE.

**CONTACT PERSON / EAP (COMMENTS OR QUERIES):**

Contact person: Jacqui Davis (Nemal Consulting)  
Tel: (011) 781 1730  
Fax: (011) 781 1731  
Email: jacqu@nema.co.za  
Postal Address: PO Box 1670, Sunninghill, 2157

24 Nov 2021 9:36:28 am

4



31°29'21.55"S;  
18° 4'42.70"E



24 Nov 2021 9:52:17 am





# PROPOSED SERE SOLAR PHOTOVOLTAIC PLANT PHASE 1A AND ASSOCIATED INFRASTRUCTURE, WESTERN CAPE PROVINCE

## BACKGROUND INFORMATION DOCUMENT (BID)

NOVEMBER 2021

APPLICANT:



PREPARED FOR: ESKOM HOLDINGS SOC LTD.



Environmental, Social and OHS Consultants

P.O. Box 1673

Sunninghill

2157

South Africa

147 Bram Fisher Drive

Ferndale

2194

South Africa

Tel: +27 11 781 1730

Fax: +27 11 781 1731

[www.nemai.co.za](http://www.nemai.co.za)

## 1 PROJECT BACKGROUND

Eskom Holdings SOC Ltd intends to develop a solar photovoltaic (PV) plant within their existing SERE Wind Farm facility located in the Matsikama Local Municipality falling within the West Coast District Municipality in the Western Cape Province. Nemaï Consulting has been appointed as the independent Environmental Assessment Practitioner (EAP) to conduct the Environmental Authorisation (EA) process for Phase 1A of the proposed Solar PV Plant.

Notice is hereby given, in terms of the Environmental Impact Assessment (EIA) Regulations (Government Notice (GN) No. R. 982 of 4 December 2014), as amended, promulgated in terms of the National Environmental Management Act (NEMA) (Act No. 107 of 1998), of the intent to carry out a Basic Assessment (BA) Process.

## 2 PURPOSE OF THE BACKGROUND INFORMATION DOCUMENT

The key objective of the Background Information Document (BID) revolves around conveying relevant and key information regarding the proposed project to all those parties who are likely to be affected by the proposed SERE Solar PV Plant development, thereby also fostering public involvement. The BID provides an overview of the following:

- The various aspects of the environmental processes that is required for the implementation of the proposed project;
- An understanding of the proposed project; and
- A locality map indicating the position of the development.

Furthermore, the BID also provides stakeholders with the opportunity to register as Interested and Affected Parties (IAPs) and to raise their issues and concerns with regards to the proposed Solar PV Plant. Please see the end of this document for details as to how to register as an IAP and submit comments.

### 3 PROJECT DESCRIPTION

The hybridisation of the existing Sere Wind Farm with the installation of PV capacity was identified as one of the Renewable initiatives in the Eskom Corporate Plan. Sere Wind Farm is a 105.8 MW wind facility located near Vredendal in the Western Cape, which entered into commercial operation on 31 March 2015. In order to address the urgent need for additional generating capacity, it has been proposed that PV technology be installed at the Sere Wind Farm site in phases. This project is applicable for the first phase (Phase 1A) of the Sere PV project. Phase 1A aims to address Eskom's urgent need for additional generating capacity.

The Proposed SERE Solar PV Plant Phase 1A is located in the Western Cape Province approximately 50 km north west of Vredendal within the Matsikama Local Municipality (**Figures 1**).

The facility proposed for Sere PV Phase 1A will include a total site area less than 20 hectares to allow for the construction of a PV facility up to 19.9 MW capacity and associated infrastructure. The proposed development includes:

- Solar PV modules that convert solar radiation directly into electricity. The solar PV modules will be elevated off the ground and will be mounted 3m or 6 m above ground level on either fixed tilt systems or tracking systems.
- Inverter stations, each occupying a footprint up to approximately 30 m<sup>2</sup>, with up to 20 Inverter stations installed on the site. Each Inverter station will contain an inverter, step-up transformer, and switchgear. The Inverter stations will be distributed on the site, located alongside its associated Solar PV module arrays. The Inverter station will perform conversion of DC (direct current) to AC (alternating current), and step-up the LV voltage to 33kV, to allow the electricity to be fed into the Skaapvlei substation. Inverter stations will connect several arrays of Solar PV modules and will be placed along the internal roads for easy accessibility and maintenance.
- A new access road, approximately 8m wide and less than 1 km in length, from an existing Wind Farm road to the PV site.
- A perimeter road around the PV site, approximately 5 m wide and 1.8 km in length.
- Internal roads for access to the Inverter stations, approximately 5 m wide and 3.4 km total length.
- Internal roads/paths between the Solar PV module rows, approximately 2.5 m wide, to allow access to the Solar PV modules for operations and maintenance activities.
- Laydown area, occupying a footprint up to 4,000 m<sup>2</sup>, located within the PV site boundary. The laydown area will also accommodate water storage tanks (estimated 32 kL for the first 4 months and 20 kL for the remaining 20 months, until construction

is completed). This area will also accommodate the offices for construction contractors and would be used for parking and office buildings during the operation phase.

- Batching plant, occupying a footprint up to 7,675 m<sup>2</sup>, for mixing ingredients for concrete which will be rehabilitated after construction. This area may, however, be used for an extra PV panel installation if not used by the contractor as a batching plant.
- The Solar PV plant facility security cabin, occupying a footprint up to 10 m<sup>2</sup>, including ablution facilities at the PV site entrance.
- Perimeter fencing of the Solar PV site, with access gates.
- Construction and installation of underground electrical interconnection cables, with trenching up to 1 km in length, connecting the Solar PV facility to the 33/132 kV Skaapvlei substation.

The solar PV plant has a design life of a minimum of 25 years. The extension of the life of the plant will be considered when assessing the plant's economic viability to remain operational after its end of life.

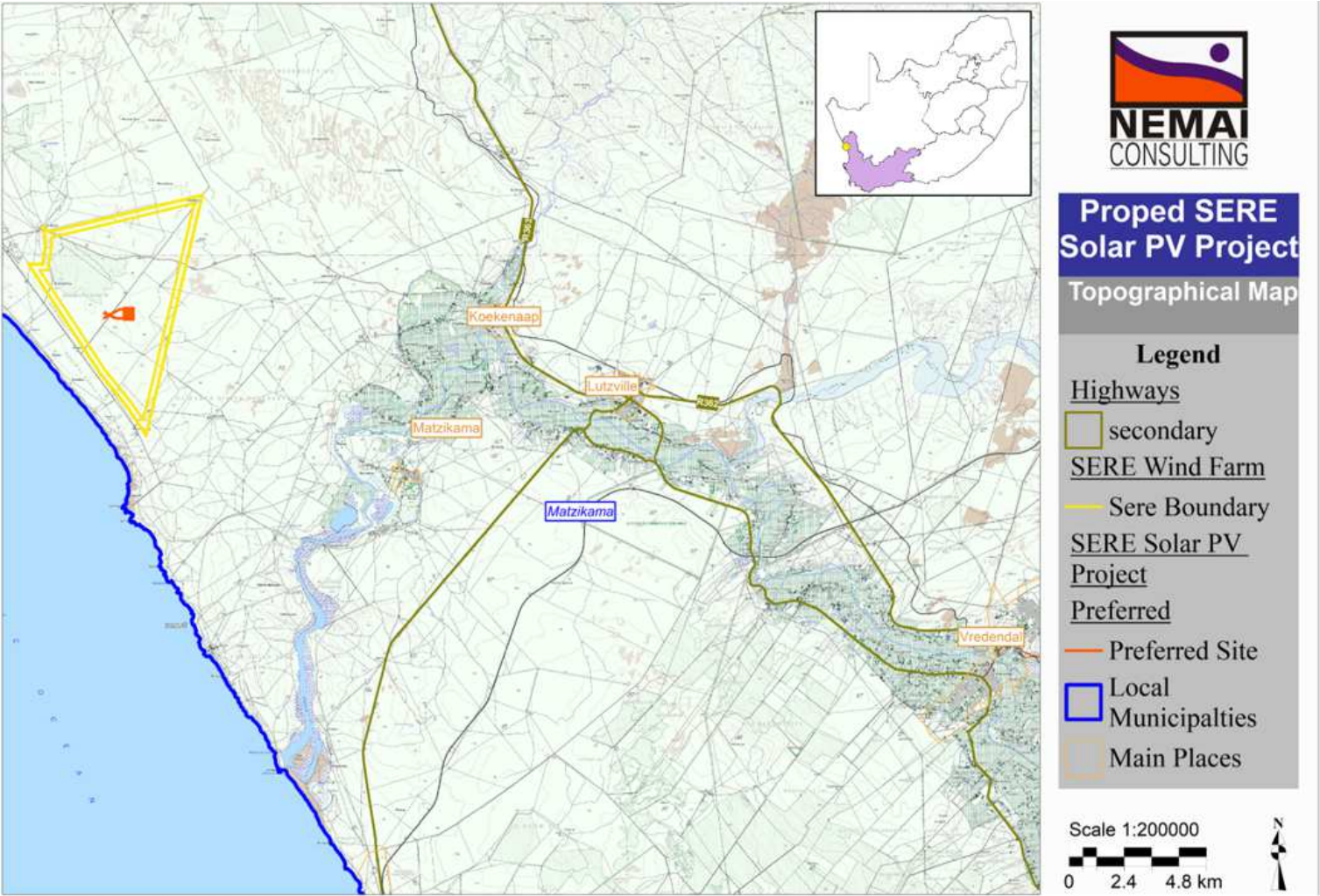


Figure 1: Topographical Locality Map of the proposed SERE Solar PV Project

Proposed SERE Solar PV Phase 1A and Associated Infrastructure, Western Cape Province  
Background Information Document

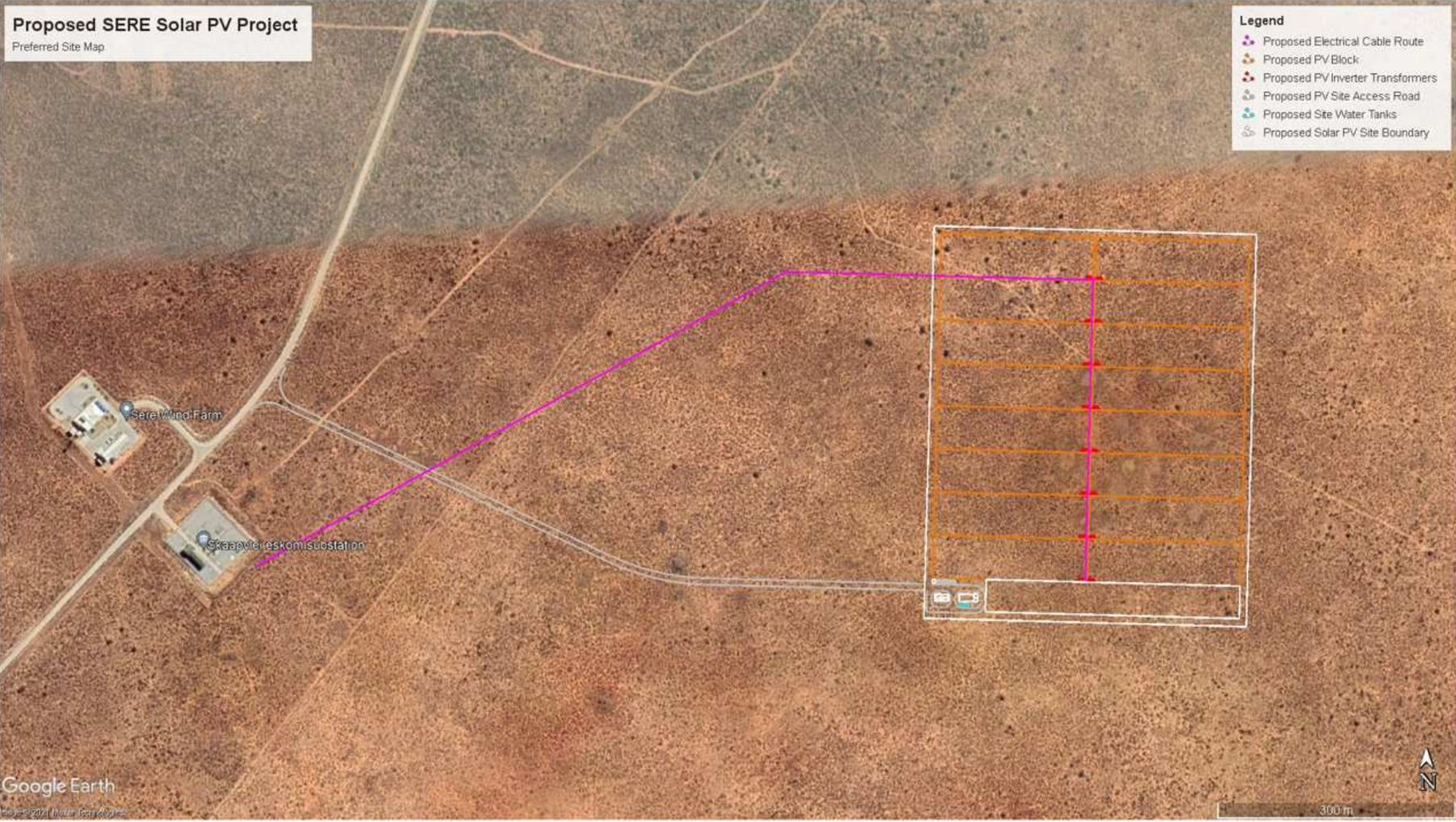


Figure 2: Site Map of the proposed SERE Solar PV Plant and Associated Infrastructure

## 4 REGULATORY FRAMEWORK

The proposed SERE Solar PV Plant development falls within the ambit of the NEMA. Since no watercourses were present on desktop level within 500 m of the proposed site and infrastructure, authorisation through the National Water Act (Act No. 36 of 1998) would not be required.

### 4.1 Basic Assessment (BA) Process:

In terms of GN No. R.983 and R.985, as amended, of the NEMA (Act No. 107 of 1998), a specific list of activities was identified which could have a detrimental impact on the receiving environment. These listed activities require Environmental Authorisation from the Competent Authority, i.e. the National Department of Forestry, Fisheries and the Environment (DFFE).

**Table 1: Listed Activities for the proposed SERE Solar PV Plant**

Notice No.	Activity No.	Activity Description	Project Relevance
GN 983	1	The development of facilities or infrastructure for the generation of electricity from a renewable resource where— (i) the electricity output is more than 10 megawatts but less than 20 megawatts	Development of a solar PV plant consisting of approximately 20,000 – 65,000 solar PV modules and total installed power capacity of 14 – 19.9 MW.
GN 983	11	The development of facilities or infrastructure for the transmission and distribution of electricity— (i) outside urban areas or industrial complexes with a capacity of more than 33 but less than 275 kilovolts	Electrical interconnection line(s), with capacity of 22kV or 33kV, for evacuation of power from the Solar PV facility to the 33/132 kV Skaapvlei substation.
GN 983	27	The clearance of an area of 1 hectare or more, but less than 20 hectares of indigenous vegetation, except where such clearance of indigenous vegetation is required for— (i) the undertaking of a linear activity; or (ii) maintenance purposes undertaken in accordance with a maintenance management plan.	Development of a solar PV plant and associated infrastructure (e.g. offices, maintenance buildings, guard house, inverters, construction laydown area and batching plant) with a footprint of more than 1 hectare but less than 20 hectares.
GN 983	28	Residential, mixed, retail, commercial, industrial or institutional developments where such land was used for agriculture, game farming, equestrian purposes or afforestation on or after 01 April 1998 and where such development:	The current Wind Farm site is zoned as Agriculture and has been used on an ad hoc basis for grazing of sheep. Therefore, this activity may be applicable as an area larger than 1 ha will be converted to a



Notice No.	Activity No.	Activity Description	Project Relevance
		(ii) will occur outside an urban area, where the total land to be developed is bigger than 1 hectare;	Solar PV Plant and no longer be available for ad hoc grazing.
GN 985	4 i. ii. (aa)	The development of a road wider than 4 metres with a reserve less than 13,5 metres. i. Western Cape ii. Areas outside urban areas; (aa) Areas containing indigenous vegetation;	A number of roads will be constructed as unsurfaced roads in association with the development across indigenous vegetation: Site access road from existing Sere road – up to 1 km long and 5 m wide. Site perimeter road – approx. 5 m wide and 1.8 km total length Internal roads for access to the Inverter stations – approx. 5 m wide and 3.4 km total length.
GN 985	10 i. ii.	The development and related operation of facilities or infrastructure for the storage, or storage and handling of a dangerous good, where such storage occurs in containers with a combined capacity of 30 but not exceeding 80 cubic metres. i. Western Cape ii. All areas outside urban areas;	Information on the actual amount of diesel that will be stored on site during construction by the contractor is unknown. There is a potential for the 30m <sup>3</sup> threshold to be exceeded, but not 80m <sup>3</sup> .
GN 985	12 i. ii.	The clearance of an area of 300 square metres or more of indigenous vegetation except where such clearance of indigenous vegetation is required for maintenance purposes undertaken in accordance with a maintenance management plan. i. Western Cape ii. Within critical biodiversity areas identified in bioregional plans;	The proposed site falls within a CBA1 according to the Western Cape Biodiversity Spatial Plan 2017.

Accordingly, the proposed project requires environmental authorisation from DFFE via the BA process outlined in the EIA Regulations, as amended.

The BA process is outlined in **Figure 3**. The Basic Assessment Report (BAR) will contain the details of the assessment conducted and include all comments from IAPs, specialist investigations, project design and impacts that have been identified and proposed mitigation measures to counter potential impacts.

A copy of the Draft BAR will be made available for public review, prior to finalisation and submission of the BAR to DFFE. Only **registered** IAPs will continue to be notified of the BA process as it unfolds. Please see the end of this document for details as to how to register as an IAP.

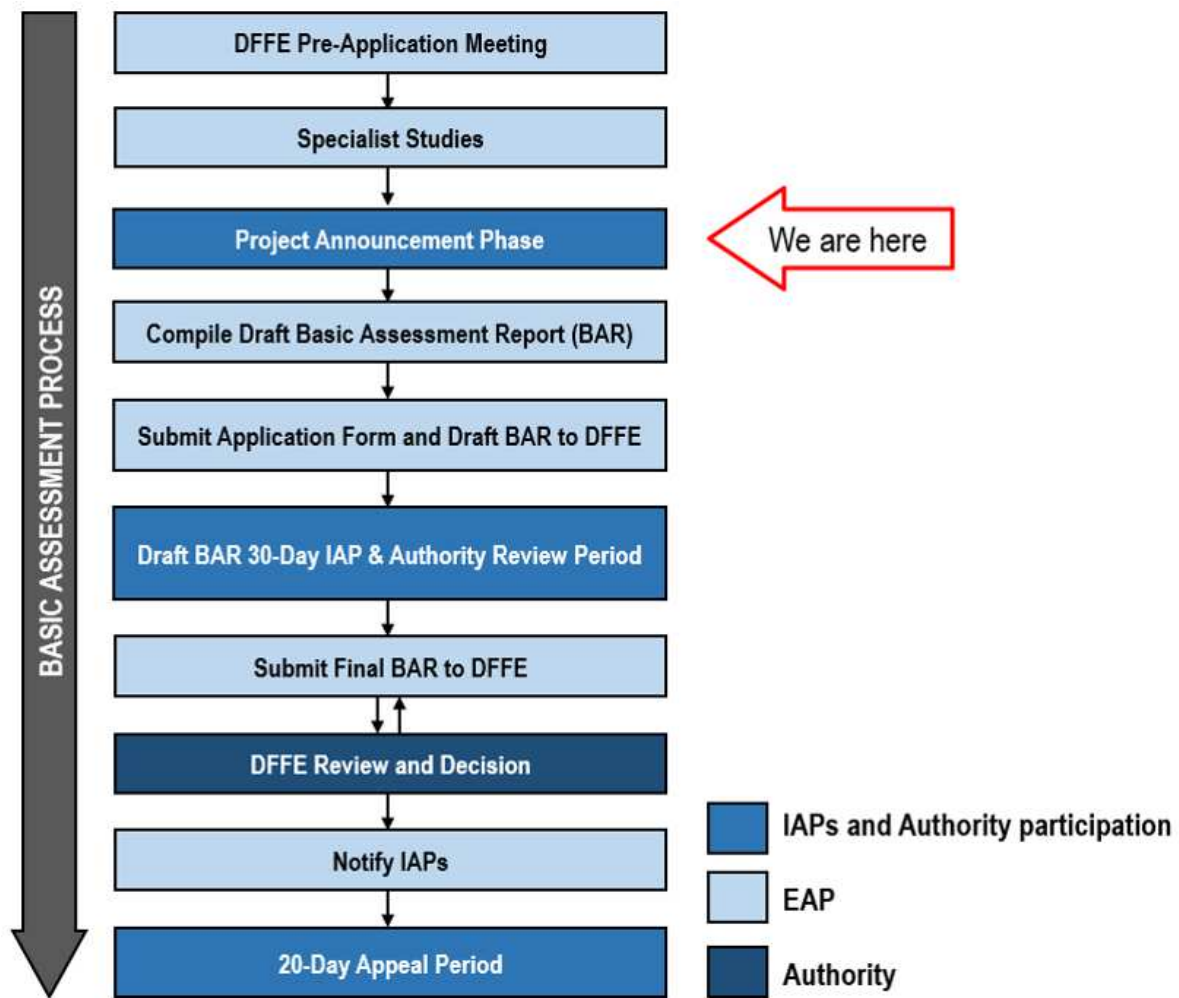


Figure 3: Basic Assessment Process

## 5 PUBLIC PARTICIPATION

A Public Participation Process will be conducted in terms of Chapter 6 of the EIA Regulations, as amended, of the NEMA, and the DFFE approved project Public Participation Plan.

The Public Participation Process will involve the following:

1. Notification and Announcement Phase:
  - a. Site notices will be erected at prominent points on and around the study area.
  - b. BIDs will be distributed to the landowners, neighbouring properties and companies/ developments that may be affected by the proposed development.
  - c. Nemaï Consulting will engage with the Ward Councillors in the area and identify measures to ensure the communities are informed about the project.

- d. BIDs will be emailed to all relevant stakeholders (including authorities and state departments).
  - e. An advertisement will be placed in a local newspaper.
  - f. Focus group engagements will be arranged with various parties if requested.
2. Document 30-day Review Period:
- a. An advertisement will be placed in a local newspaper.
  - b. Emails and SMSs will be sent to Registered IAPs.
  - c. Provision will be made for virtual public meetings if requested.
  - d. All comments received will be incorporated into the Comments and Response Report (CRR) and Final BAR for submission to DFFE.
3. Notification of Decision
- a. Once a decision is received from the Authority, Registered IAPs will be informed of the decision in writing and a regulated 20-day appeal period will follow.

To ensure that you are identified as an IAP, please submit your name, contact information and comment regarding the proposed development, by means of e-mail, fax or post to the EAP below at Nemai Consulting. Alternatively complete the Reply Form attached to this document and return it by means of e-mail or fax to the EAP below. All issues and concerns will be incorporated into a CRR which will be included in the Final BAR to be submitted to DFFE. Please register as an IAP by **17 January 2022**. Note that the 15 December 2021 – 05 January 2022 has been excluded from the tally of days.



**Contact Person:** Jacqui Davis  
**Tel:** (011) 781 1730  
**Fax:** (011) 781 1731  
**Email:** [jacquid@nemai.co.za](mailto:jacquid@nemai.co.za)  
**Postal Address:** PO Box 1673, Sunninghill, 2157

**REPLY FORM:**

**Proposed SERE Solar PV Phase 1A Project, Western Cape Province.**

(Complete and return to **Jacqui Davis**. This form should be returned no later than the **17 January 2022**)

<b>Date:</b>		
<b>Name of organisation:</b>		
<b>Name of Interested and Affected Party (IAP):</b>		
<b>Address:</b>	<b>Postal:</b>	<b>Physical:</b>
<b>Tel No:</b>		
<b>Fax No:</b>		
<b>E-mail:</b>		
<b>Registration as an IAP:</b>	<i>YES</i>	<i>NO</i>
<b>Comments:</b>		