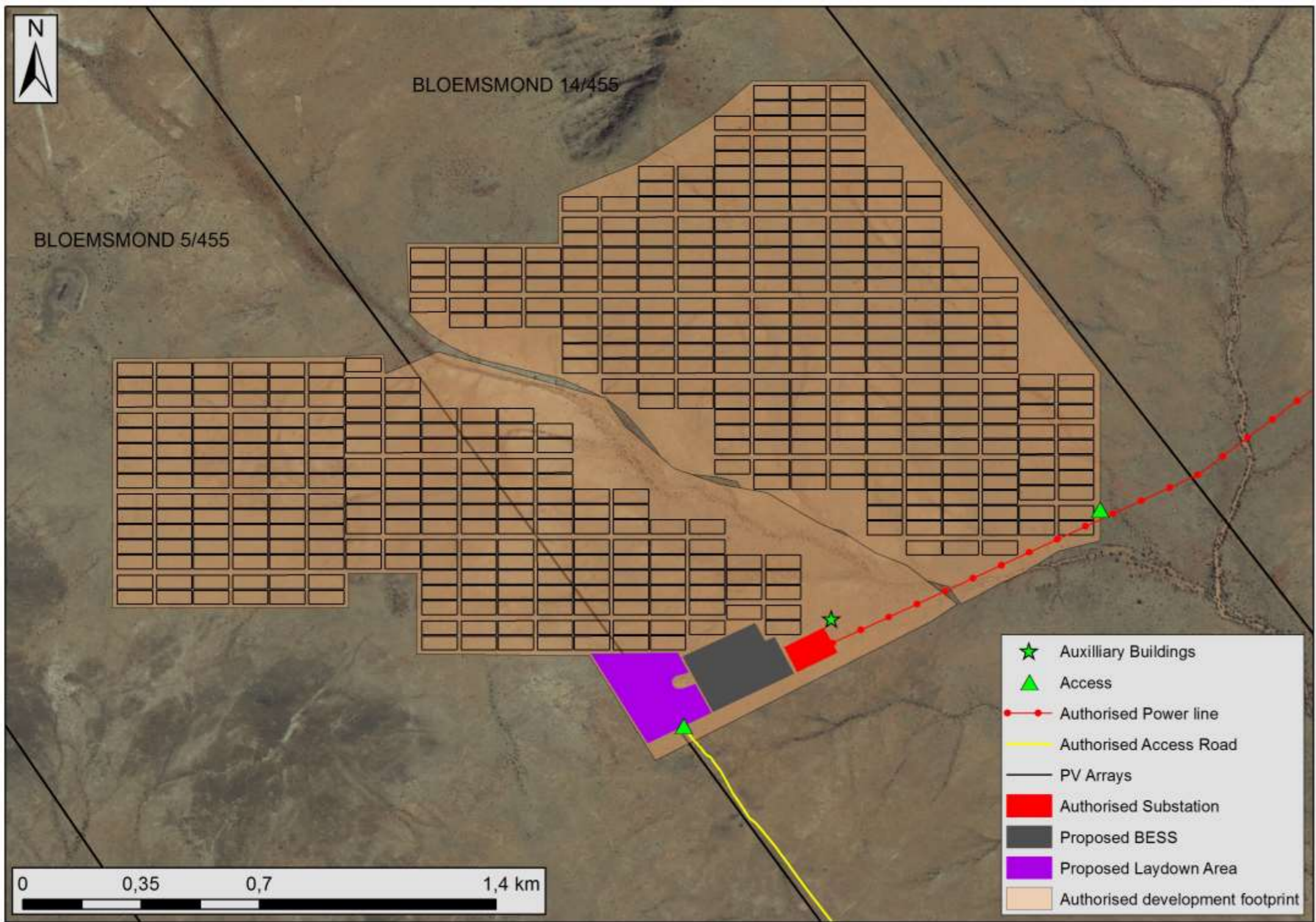
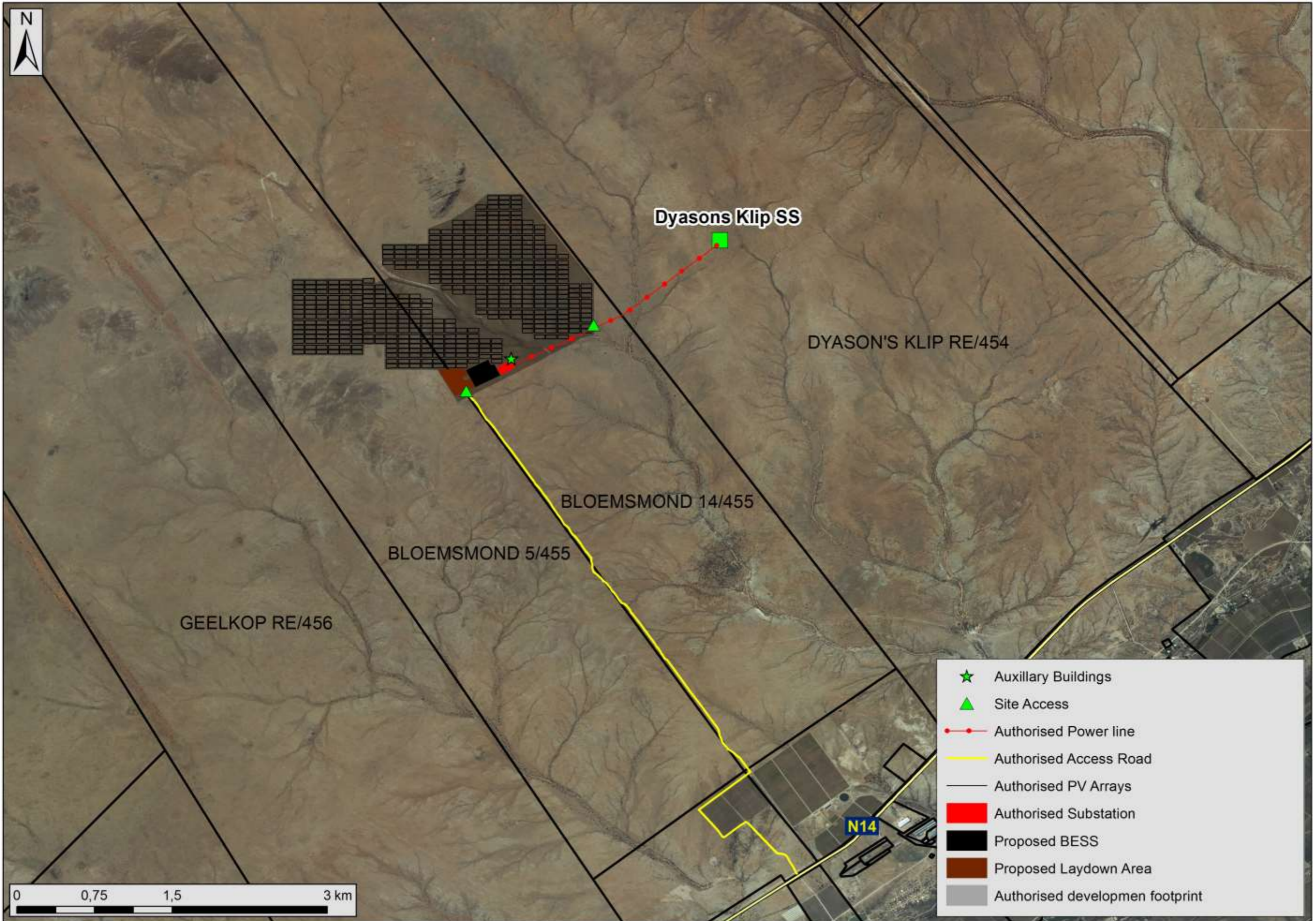
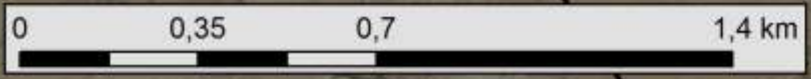
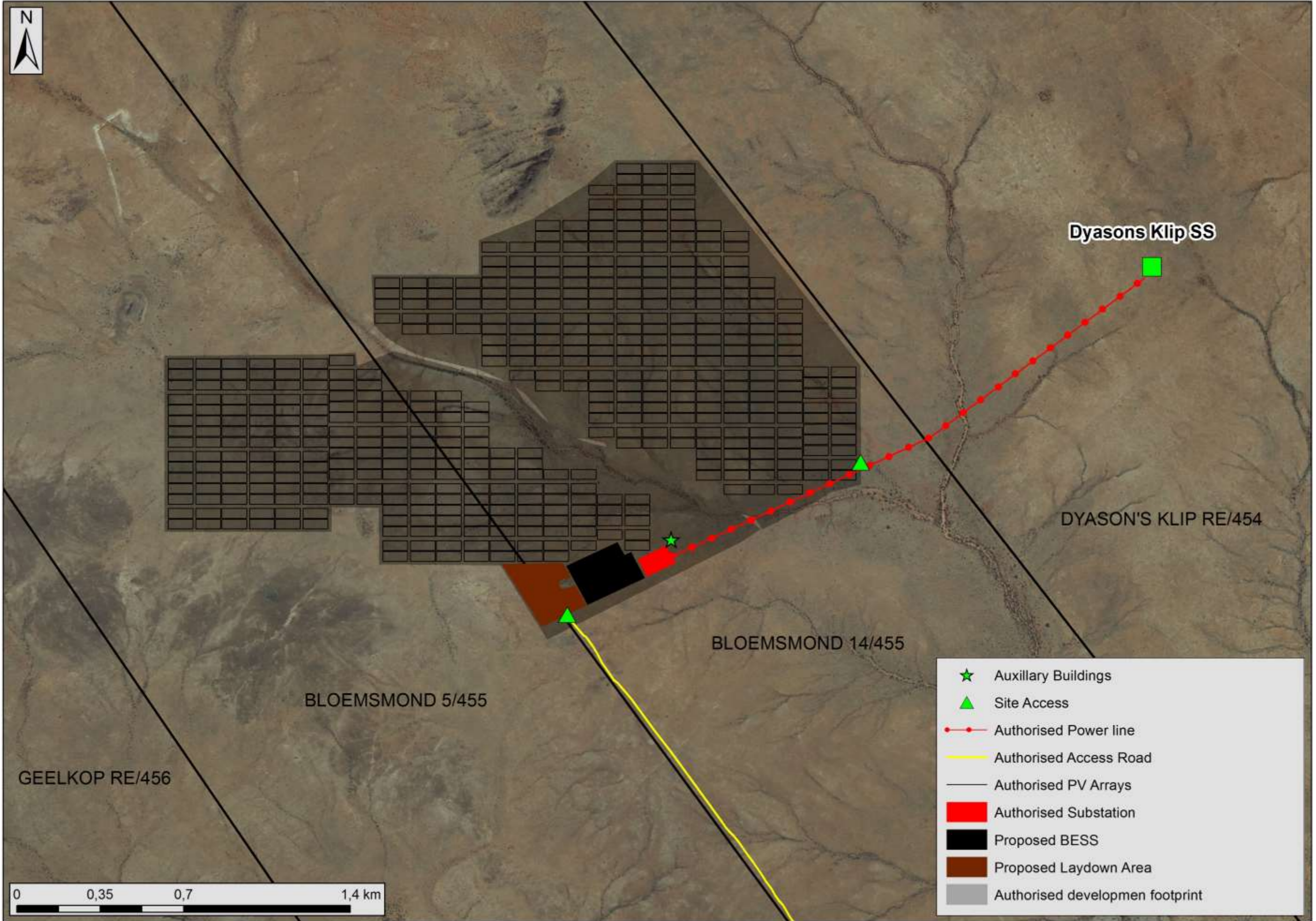


- ★ Auxiliary Buildings
 - ▲ Site Access
 - Authorised Power line
 - Authorised Access Road
 - Authorised PV Arrays
 - Authorised Substation
 - Proposed BESS
 - Proposed Laydown Area
 - Authorised developmen footprint
- Environmental Sensitivity:**
- ▨ High avifauna sensitivity
 - ▨ Heritage feature with 20m buffer
 - Ephemeral drainage lines with buffer (very high)
 - Quartz Outcrop (very high)
 - Ephemeral drainage lines with buffer (high)
 - Hill (high)
 - Rocky Hill (high)
 - Pan (high)
 - Wooded area (high)
 - Hill buffer (medium)
 - Gravel Hills (medium)







- ★ Auxillary Buildings
- ▲ Site Access
- Authorised Power line
- Authorised Access Road
- Authorised PV Arrays
- Authorised Substation
- Proposed BESS
- Proposed Laydown Area
- Authorised developmen footprint