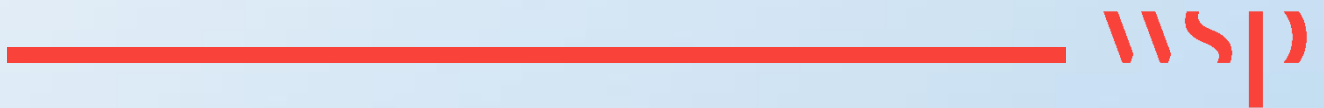


# Appendix F

## DFFE SCREENING TOOL REPORT



**SCREENING REPORT FOR AN ENVIRONMENTAL AUTHORIZATION AS  
REQUIRED BY THE 2014 EIA REGULATIONS – PROPOSED SITE  
ENVIRONMENTAL SENSITIVITY**

**EIA Reference number:**

**Project name:** Igolide Wind Energy Facility

**Project title:** Igolide Wind Energy Facility

**Date screening report generated:** 27/03/2023 12:44:51

**Applicant:** Enertrag

**Compiler:** WSP Group Africa

**Compiler signature:**

.....

**Application Category:** Utilities Infrastructure | Electricity | Generation | Renewable | Wind

# Table of Contents

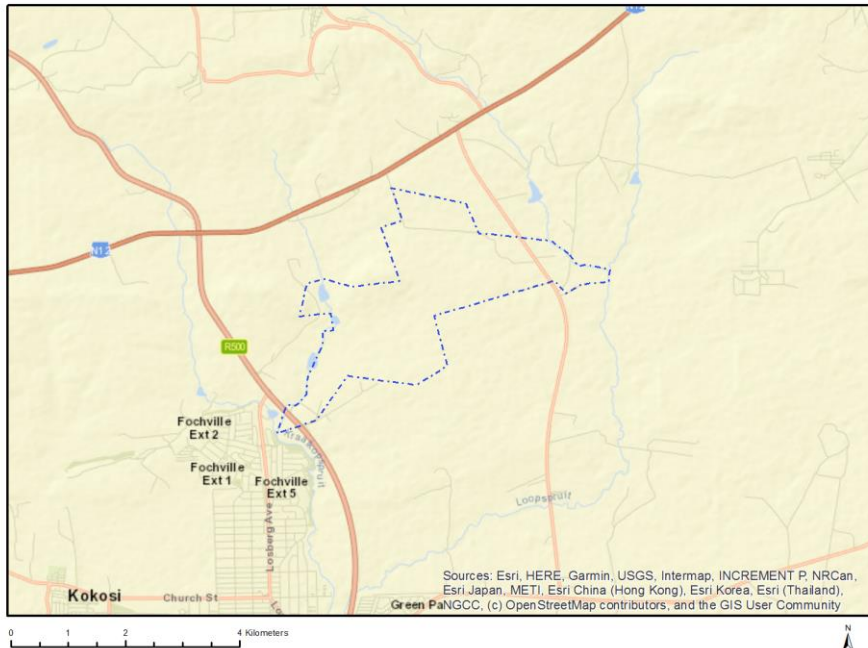
- Proposed Project Location ..... 3
  - Orientation map 1: General location ..... 3
- Map of proposed site and relevant area(s) ..... 4
  - Cadastral details of the proposed site ..... 4
  - Wind and Solar developments with an approved Environmental Authorisation or applications under consideration within 30 km of the proposed area ..... 5
  - Environmental Management Frameworks relevant to the application ..... 5
- Environmental screening results and assessment outcomes ..... 6
  - Relevant development incentives, restrictions, exclusions or prohibitions ..... 6
  - Proposed Development Area Environmental Sensitivity ..... 6
  - Specialist assessments identified ..... 6
- Results of the environmental sensitivity of the proposed area ..... 9
  - MAP OF RELATIVE AGRICULTURE THEME SENSITIVITY ..... 9
  - MAP OF RELATIVE ANIMAL SPECIES THEME SENSITIVITY ..... 10
  - MAP OF RELATIVE AQUATIC BIODIVERSITY THEME SENSITIVITY ..... 11
  - MAP OF RELATIVE ARCHAEOLOGICAL AND CULTURAL HERITAGE THEME SENSITIVITY ..... 12
  - MAP OF RELATIVE AVIAN (WIND) THEME SENSITIVITY ..... 13
  - MAP OF RELATIVE BATS (WIND) THEME SENSITIVITY ..... 14
  - MAP OF RELATIVE CIVIL AVIATION (WIND) THEME SENSITIVITY ..... 15
  - MAP OF RELATIVE DEFENCE (WIND) THEME SENSITIVITY ..... 16
  - MAP OF RELATIVE FLICKER THEME SENSITIVITY ..... 17
  - MAP OF RELATIVE LANDSCAPE (WIND) THEME SENSITIVITY ..... 18
  - MAP OF RELATIVE PALEONTOLOGY THEME SENSITIVITY ..... 19
  - MAP OF RELATIVE NOISE THEME SENSITIVITY ..... 20
  - MAP OF RELATIVE PLANT SPECIES THEME SENSITIVITY ..... 21
  - MAP OF RELATIVE RFI (WIND) THEME SENSITIVITY ..... 22
  - MAP OF RELATIVE TERRESTRIAL BIODIVERSITY THEME SENSITIVITY ..... 23

# Proposed Project Location

## Orientation map 1: General location



## Map of proposed site and relevant area(s)



## Cadastral details of the proposed site

Property details:

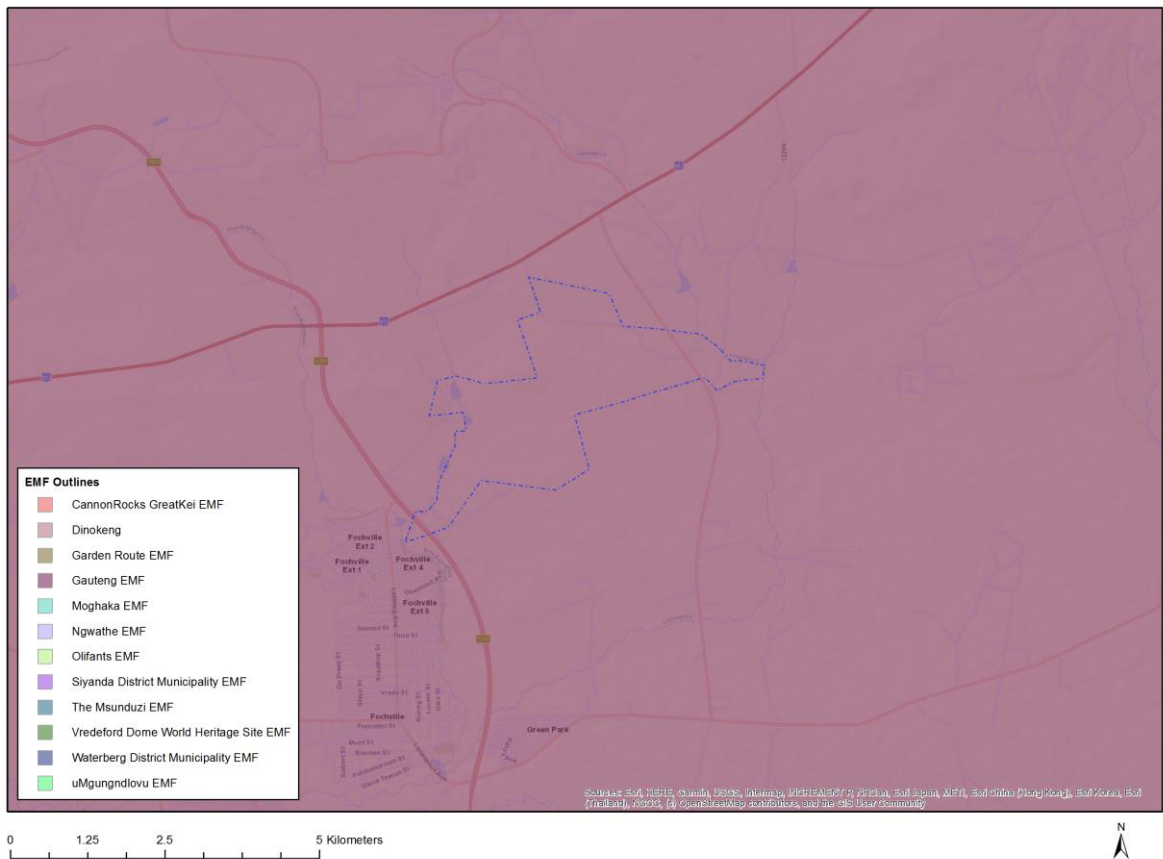
No	Farm Name	Farm/ Erf No	Portion	Latitude	Longitude	Property Type
1	LEE UWPOORT	356	0	26°25'25.43S	27°31'10.17E	Farm
2	KRAALKOP	147	0	26°26'51.9S	27°29'1.44E	Farm
3	KRAALKOP	147	23	26°27'21.53S	27°30'3.56E	Farm Portion
4	KRAALKOP	147	72	26°27'50.07S	27°29'40.41E	Farm Portion
5	LEE UWPOORT	356	66	26°26'22.83S	27°31'13.99E	Farm Portion
6	LEE UWPOORT	356	68	26°26'26.11S	27°32'2E	Farm Portion
7	KRAALKOP	147	87	26°28'1.57S	27°29'41.28E	Farm Portion
8	KRAALKOP	147	70	26°28'11.39S	27°30'3.36E	Farm Portion
9	KRAALKOP	147	8	26°28'12.68S	27°29'54.99E	Farm Portion
10	KRAALKOP	147	7	26°26'44.6S	27°30'30.15E	Farm Portion
11	KRAALKOP	147	45	26°26'25.22S	27°30'34.59E	Farm Portion
12	KRAALKOP	147	20	26°27'0.28S	27°30'46.62E	Farm Portion
13	LEE UWPOORT	356	57	26°26'52.41S	27°31'40.42E	Farm Portion
14	LEE UWPOORT	356	65	26°26'12.67S	27°31'7.84E	Farm Portion
15	LEE UWPOORT	356	7	26°27'28.66S	27°32'11.97E	Farm Portion
16	LEE UWPOORT	356	5	26°26'43.78S	27°32'47.87E	Farm Portion
17	KRAALKOP	147	71	26°28'2.8S	27°29'54.51E	Farm Portion
18	KRAALKOP	147	24	26°26'6.37S	27°30'45.21E	Farm Portion
19	KRAALKOP	147	14	26°27'26.66S	27°30'57.05E	Farm Portion
20	LEE UWPOORT	356	58	26°27'12.7S	27°31'45.15E	Farm Portion
21	LEE UWPOORT	356	6	26°26'40.96S	27°32'36.63E	Farm Portion
22	LEE UWPOORT	356	76	26°26'9.79S	27°31'58.93E	Farm Portion
23	LEE UWPOORT	356	62	26°26'29.98S	27°32'24.49E	Farm Portion
24	LEE UWPOORT	356	8	26°26'36.42S	27°31'30.85E	Farm Portion
25	KRAALKOP	147	22	26°27'39.05S	27°30'16.07E	Farm Portion
26	LEE UWPOORT	356	4	26°26'54.32S	27°33'2.32E	Farm Portion

Development footprint<sup>1</sup> vertices:  
 No development footprint(s) specified.

Wind and Solar developments with an approved Environmental Authorisation or applications under consideration within 30 km of the proposed area

No	EIA Reference No	Classification	Status of application	Distance from proposed area (km)
1	14/12/16/3/3/2/919	Solar PV	Approved	6.8

Environmental Management Frameworks relevant to the application



Environmental Management Framework	LINK
Gauteng EMF	<a href="https://screening.environment.gov.za/ScreeningDownloads/EMF/GPEMF_2021_Gazette_and_summary.pdf">https://screening.environment.gov.za/ScreeningDownloads/EMF/GPEMF_2021_Gazette_and_summary.pdf</a>

<sup>1</sup> “development footprint”, means the area within the site on which the development will take place and includes all ancillary developments for example roads, power lines, boundary walls, paving etc. which require vegetation clearance or which will be disturbed and for which the application has been submitted.

## Environmental screening results and assessment outcomes

The following sections contain a summary of any development incentives, restrictions, exclusions or prohibitions that apply to the proposed development site as well as the most environmental sensitive features on the site based on the site sensitivity screening results for the application classification that was selected. The application classification selected for this report is:

**Utilities Infrastructure | Electricity | Generation | Renewable | Wind.**

### Relevant development incentives, restrictions, exclusions or prohibitions

The following development incentives, restrictions, exclusions or prohibitions and their implications that apply to this site are indicated below.

Incentive, restriction or prohibition	Implication
Strategic Transmission Corridor-Central corridor	<a href="https://screening.environment.gov.za/ScreeningDownloads/DevelopmentZones/Combined_EGI.pdf">https://screening.environment.gov.za/ScreeningDownloads/DevelopmentZones/Combined_EGI.pdf</a>
Strategic Gas Pipeline Corridors-Phase 3: Richards Bay to Gauteng	<a href="https://screening.environment.gov.za/ScreeningDownloads/DevelopmentZones/Combined_GAS.pdf">https://screening.environment.gov.za/ScreeningDownloads/DevelopmentZones/Combined_GAS.pdf</a>

### Proposed Development Area Environmental Sensitivity

The following summary of the development site environmental sensitivities is identified. Only the highest environmental sensitivity is indicated. The footprint environmental sensitivities for the proposed development footprint as identified, are indicative only and must be verified on site by a suitably qualified person before the specialist assessments identified below can be confirmed.

Theme	Very High sensitivity	High sensitivity	Medium sensitivity	Low sensitivity
Agriculture Theme		X		
Animal Species Theme			X	
Aquatic Biodiversity Theme	X			
Archaeological and Cultural Heritage Theme				X
Avian (Wind) Theme				X
Bats (Wind) Theme		X		
Civil Aviation (Wind) Theme		X		
Defence (Wind) Theme			X	
Flicker Theme	X			
Landscape (Wind) Theme	X			
Paleontology Theme		X		
Noise Theme	X			
Plant Species Theme			X	
RFI (Wind) Theme				X
Terrestrial Biodiversity Theme	X			

### Specialist assessments identified

Based on the selected classification, and the known impacts associated with the proposed development, the following list of specialist assessments have been identified for inclusion in the assessment report. It is the responsibility of the EAP to confirm this list and to motivate in the

assessment report, the reason for not including any of the identified specialist study including the provision of photographic evidence of the site situation.

No	Specialist assessment	Assessment Protocol
1	Agricultural Impact Assessment	<a href="https://screening.environment.gov.za/ScreeningDownloads/AssessmentProtocols/Gazetted_WindAndSolar_Agriculture_Assessment_Protocols.pdf">https://screening.environment.gov.za/ScreeningDownloads/AssessmentProtocols/Gazetted_WindAndSolar_Agriculture_Assessment_Protocols.pdf</a>
2	Landscape/Visual Impact Assessment	<a href="https://screening.environment.gov.za/ScreeningDownloads/AssessmentProtocols/Gazetted_General_Requirement_Assessment_Protocols.pdf">https://screening.environment.gov.za/ScreeningDownloads/AssessmentProtocols/Gazetted_General_Requirement_Assessment_Protocols.pdf</a>
3	Archaeological and Cultural Heritage Impact Assessment	<a href="https://screening.environment.gov.za/ScreeningDownloads/AssessmentProtocols/Gazetted_General_Requirement_Assessment_Protocols.pdf">https://screening.environment.gov.za/ScreeningDownloads/AssessmentProtocols/Gazetted_General_Requirement_Assessment_Protocols.pdf</a>
4	Palaeontology Impact Assessment	<a href="https://screening.environment.gov.za/ScreeningDownloads/AssessmentProtocols/Gazetted_General_Requirement_Assessment_Protocols.pdf">https://screening.environment.gov.za/ScreeningDownloads/AssessmentProtocols/Gazetted_General_Requirement_Assessment_Protocols.pdf</a>
5	Terrestrial Biodiversity Impact Assessment	<a href="https://screening.environment.gov.za/ScreeningDownloads/AssessmentProtocols/Gazetted_Terrestrial_Biodiversity_Assessment_Protocols.pdf">https://screening.environment.gov.za/ScreeningDownloads/AssessmentProtocols/Gazetted_Terrestrial_Biodiversity_Assessment_Protocols.pdf</a>
6	Aquatic Biodiversity Impact Assessment	<a href="https://screening.environment.gov.za/ScreeningDownloads/AssessmentProtocols/Gazetted_Aquatic_Biodiversity_Assessment_Protocols.pdf">https://screening.environment.gov.za/ScreeningDownloads/AssessmentProtocols/Gazetted_Aquatic_Biodiversity_Assessment_Protocols.pdf</a>
7	Avian Impact Assessment	<a href="https://screening.environment.gov.za/ScreeningDownloads/AssessmentProtocols/Gazetted_Avifauna_Assessment_Protocols.pdf">https://screening.environment.gov.za/ScreeningDownloads/AssessmentProtocols/Gazetted_Avifauna_Assessment_Protocols.pdf</a>
8	Civil Aviation Assessment	<a href="https://screening.environment.gov.za/ScreeningDownloads/AssessmentProtocols/Gazetted_Civil_Aviation_Installations_Assessment_Protocols.pdf">https://screening.environment.gov.za/ScreeningDownloads/AssessmentProtocols/Gazetted_Civil_Aviation_Installations_Assessment_Protocols.pdf</a>
9	Defense Assessment	<a href="https://screening.environment.gov.za/ScreeningDownloads/AssessmentProtocols/Gazetted_Defence_Installations_Assessment_Protocols.pdf">https://screening.environment.gov.za/ScreeningDownloads/AssessmentProtocols/Gazetted_Defence_Installations_Assessment_Protocols.pdf</a>
10	RFI Assessment	<a href="https://screening.environment.gov.za/ScreeningDownloads/AssessmentProtocols/Gazetted_General_Requirement_Assessment_Protocols.pdf">https://screening.environment.gov.za/ScreeningDownloads/AssessmentProtocols/Gazetted_General_Requirement_Assessment_Protocols.pdf</a>
11	Noise Impact Assessment	<a href="https://screening.environment.gov.za/ScreeningDownloads/AssessmentProtocols/Gazetted_Noise_Impacts_Assessment_Protocol.pdf">https://screening.environment.gov.za/ScreeningDownloads/AssessmentProtocols/Gazetted_Noise_Impacts_Assessment_Protocol.pdf</a>
12	Flicker Assessment	<a href="https://screening.environment.gov.za/ScreeningDownloads/AssessmentProtocols/Gazetted_General_Requirement_Assessment_Protocols.pdf">https://screening.environment.gov.za/ScreeningDownloads/AssessmentProtocols/Gazetted_General_Requirement_Assessment_Protocols.pdf</a>
13	Traffic Impact Assessment	<a href="https://screening.environment.gov.za/ScreeningDownloads/AssessmentProtocols/Gazetted_General_Requirement_Assessment_Protocols.pdf">https://screening.environment.gov.za/ScreeningDownloads/AssessmentProtocols/Gazetted_General_Requirement_Assessment_Protocols.pdf</a>
14	Geotechnical Assessment	<a href="https://screening.environment.gov.za/ScreeningDownloads/AssessmentProtocols/Gazetted_General_Requirement_Assessment_Protocols.pdf">https://screening.environment.gov.za/ScreeningDownloads/AssessmentProtocols/Gazetted_General_Requirement_Assessment_Protocols.pdf</a>
15	Socio-Economic Assessment	<a href="https://screening.environment.gov.za/ScreeningDownloads/AssessmentProtocols/Gazetted_General_Requirement_Assessment_Protocols.pdf">https://screening.environment.gov.za/ScreeningDownloads/AssessmentProtocols/Gazetted_General_Requirement_Assessment_Protocols.pdf</a>
16	Plant Species Assessment	<a href="https://screening.environment.gov.za/ScreeningDownloads/AssessmentProtocols/Gazetted_General_Requirement_Assessment_Protocols.pdf">https://screening.environment.gov.za/ScreeningDownloads/AssessmentProtocols/Gazetted_General_Requirement_Assessment_Protocols.pdf</a>



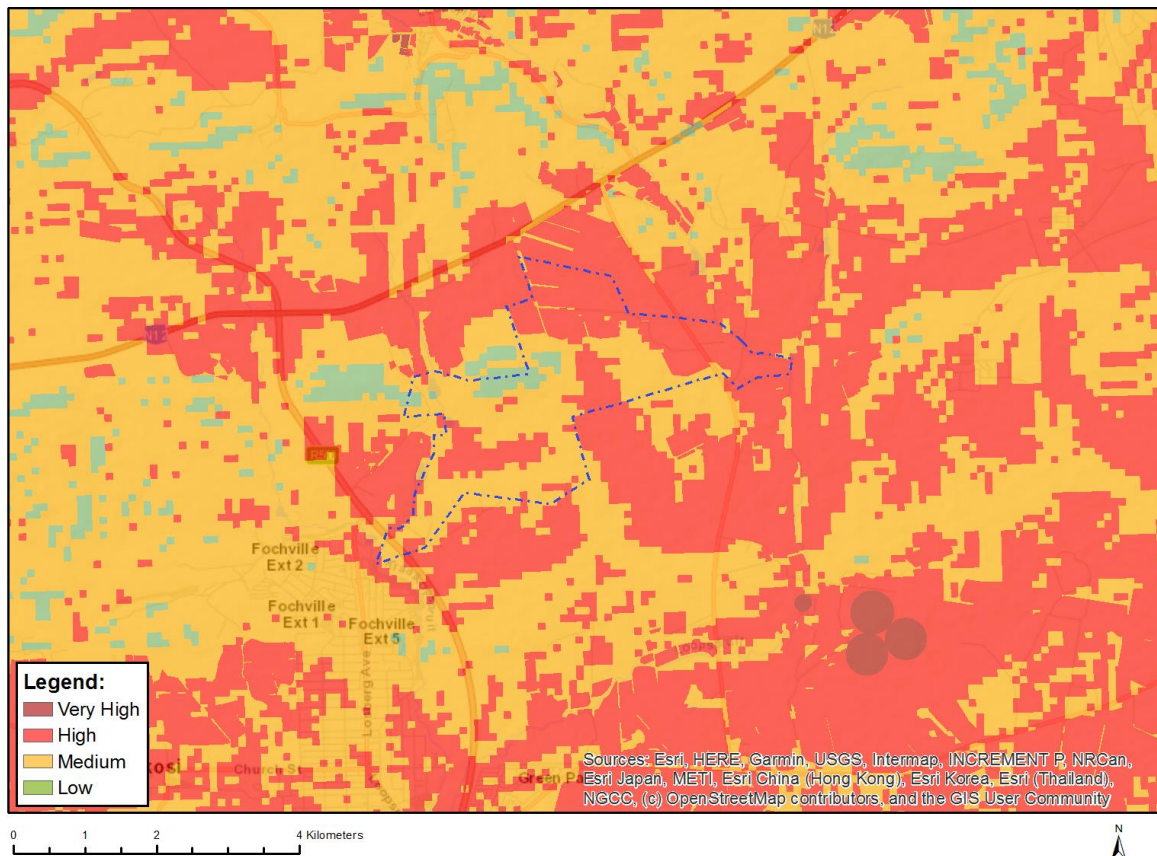
		<a href="#">ssmentProtocols/Gazetted Plant Species Assessment Protocols.pdf</a>
17	Animal Species Assessment	<a href="https://screening.environment.gov.za/ScreeningDownloads/AssessmentProtocols/Gazetted Animal Species Assessment Protocols.pdf">https://screening.environment.gov.za/ScreeningDownloads/AssessmentProtocols/Gazetted Animal Species Assessment Protocols.pdf</a>

OFFICIAL

## Results of the environmental sensitivity of the proposed area.

The following section represents the results of the screening for environmental sensitivity of the proposed site for relevant environmental themes associated with the project classification. It is the duty of the EAP to ensure that the environmental themes provided by the screening tool are comprehensive and complete for the project. Refer to the disclaimer.

### MAP OF RELATIVE AGRICULTURE THEME SENSITIVITY

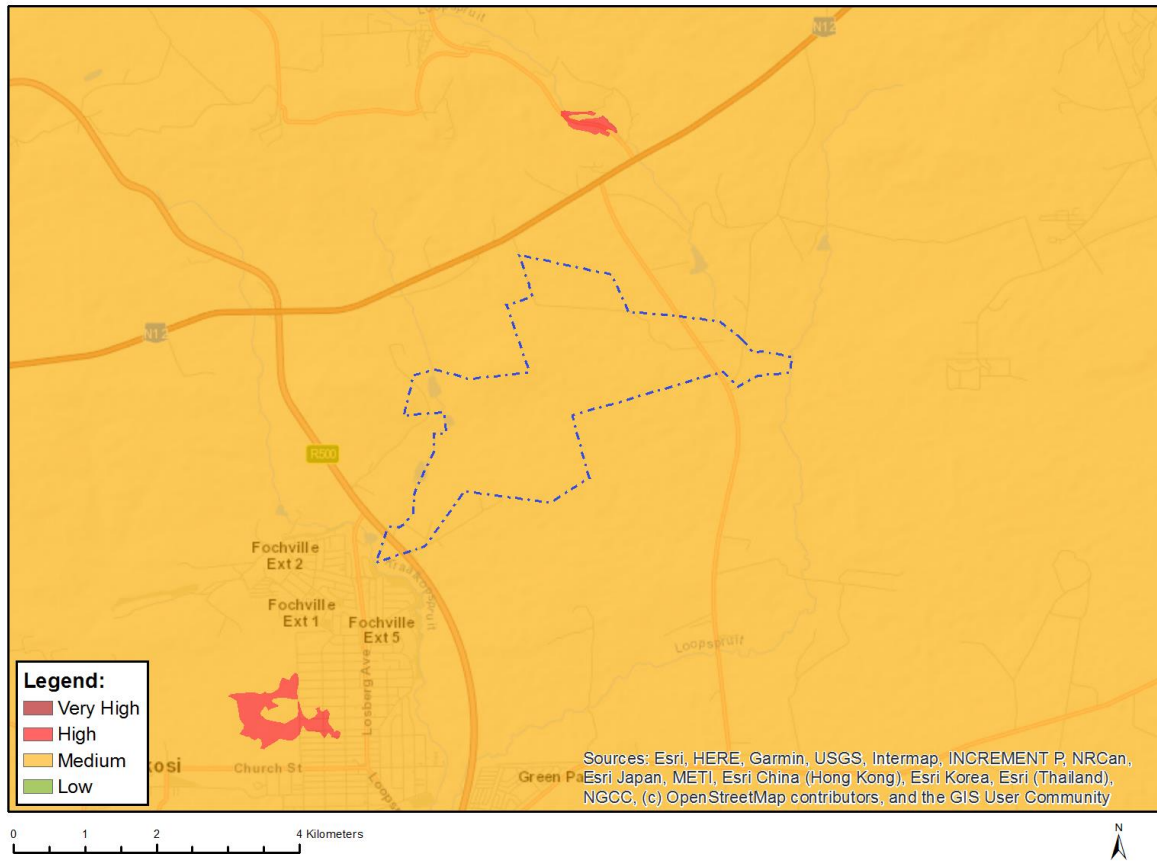


Very High sensitivity	High sensitivity	Medium sensitivity	Low sensitivity
	X		

#### Sensitivity Features:

Sensitivity	Feature(s)
High	Land capability;09. Moderate-High/10. Moderate-High
High	Annual Crop Cultivation / Planted Pastures Rotation;Land capability;09. Moderate-High/10. Moderate-High
High	Annual Crop Cultivation / Planted Pastures Rotation;Land capability;06. Low-Moderate/07. Low-Moderate/08. Moderate
Low	Land capability;01. Very low/02. Very low/03. Low-Very low/04. Low-Very low/05. Low
Medium	Land capability;06. Low-Moderate/07. Low-Moderate/08. Moderate

## MAP OF RELATIVE ANIMAL SPECIES THEME SENSITIVITY



Where only a sensitive plant unique number or sensitive animal unique number is provided in the screening report and an assessment is required, the environmental assessment practitioner (EAP) or specialist is required to email SANBI at [eiadatarequests@sanbi.org.za](mailto:eiadatarequests@sanbi.org.za) listing all sensitive species with their unique identifiers for which information is required. The name has been withheld as the species may be prone to illegal harvesting and must be protected. SANBI will release the actual species name after the details of the EAP or specialist have been documented.

Very High sensitivity	High sensitivity	Medium sensitivity	Low sensitivity
		X	

### Sensitivity Features:

Sensitivity	Feature(s)
Medium	Aves-Tyto capensis
Medium	Aves-Hydroprogne caspia
Medium	Aves-Eupodotis senegalensis
Medium	Insecta-Lepidochrysops praeterita
Medium	Insecta-Lepidochrysops procera
Medium	Mammalia-Crocidura maquassiensis
Medium	Mammalia-Hydrictis maculicollis
Medium	Invertebrate-Clonia uvarovi

## MAP OF RELATIVE AQUATIC BIODIVERSITY THEME SENSITIVITY

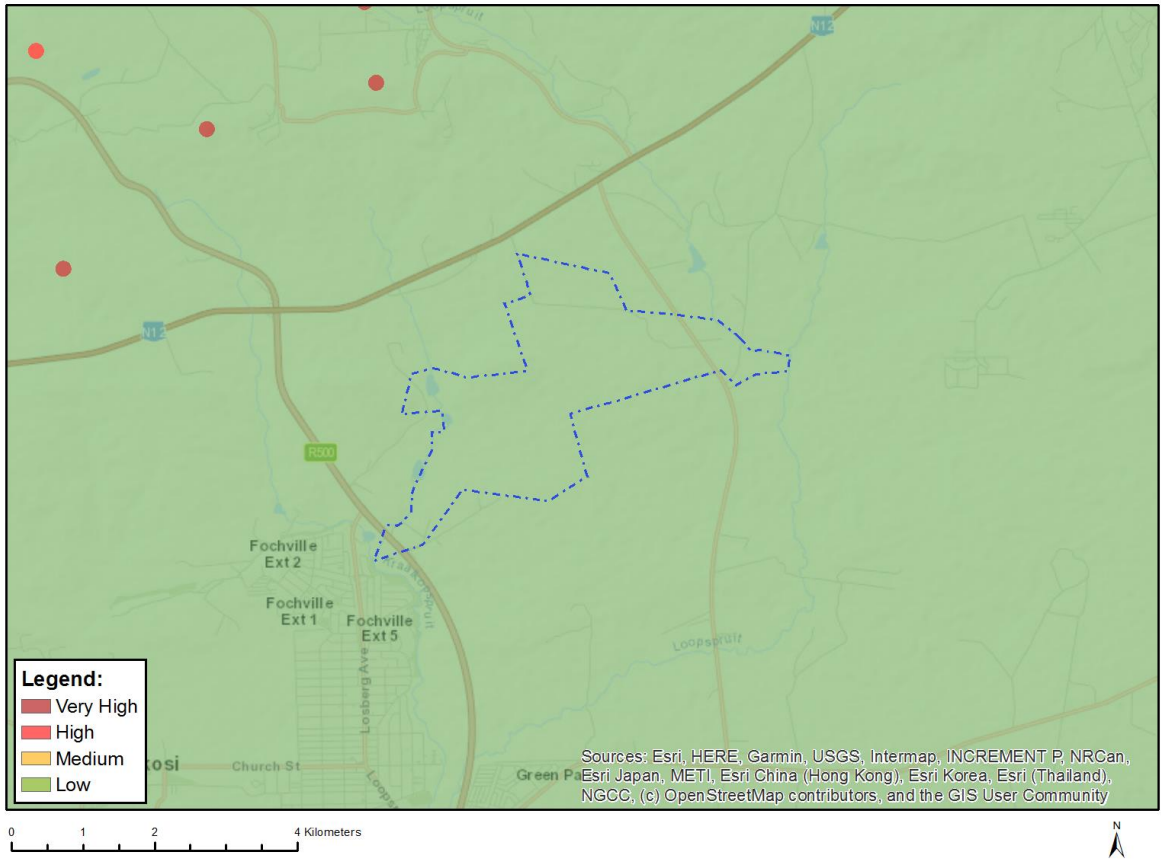


Very High sensitivity	High sensitivity	Medium sensitivity	Low sensitivity
X			

### Sensitivity Features:

Sensitivity	Feature(s)
Low	Low sensitivity
Very High	Aquatic CBAs
Very High	Wetlands and Estuaries

# MAP OF RELATIVE ARCHAEOLOGICAL AND CULTURAL HERITAGE THEME SENSITIVITY

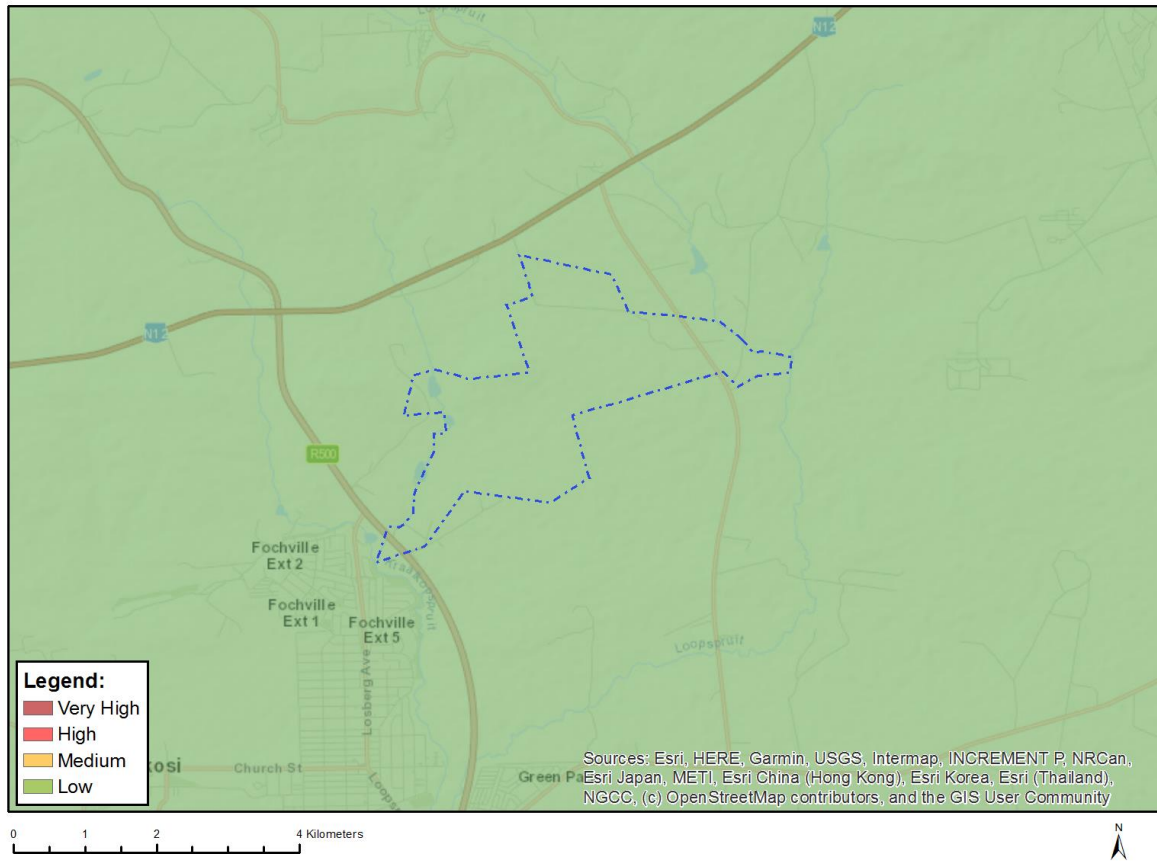


Very High sensitivity	High sensitivity	Medium sensitivity	Low sensitivity
			X

## Sensitivity Features:

Sensitivity	Feature(s)
Low	Low sensitivity

## MAP OF RELATIVE AVIAN (WIND) THEME SENSITIVITY

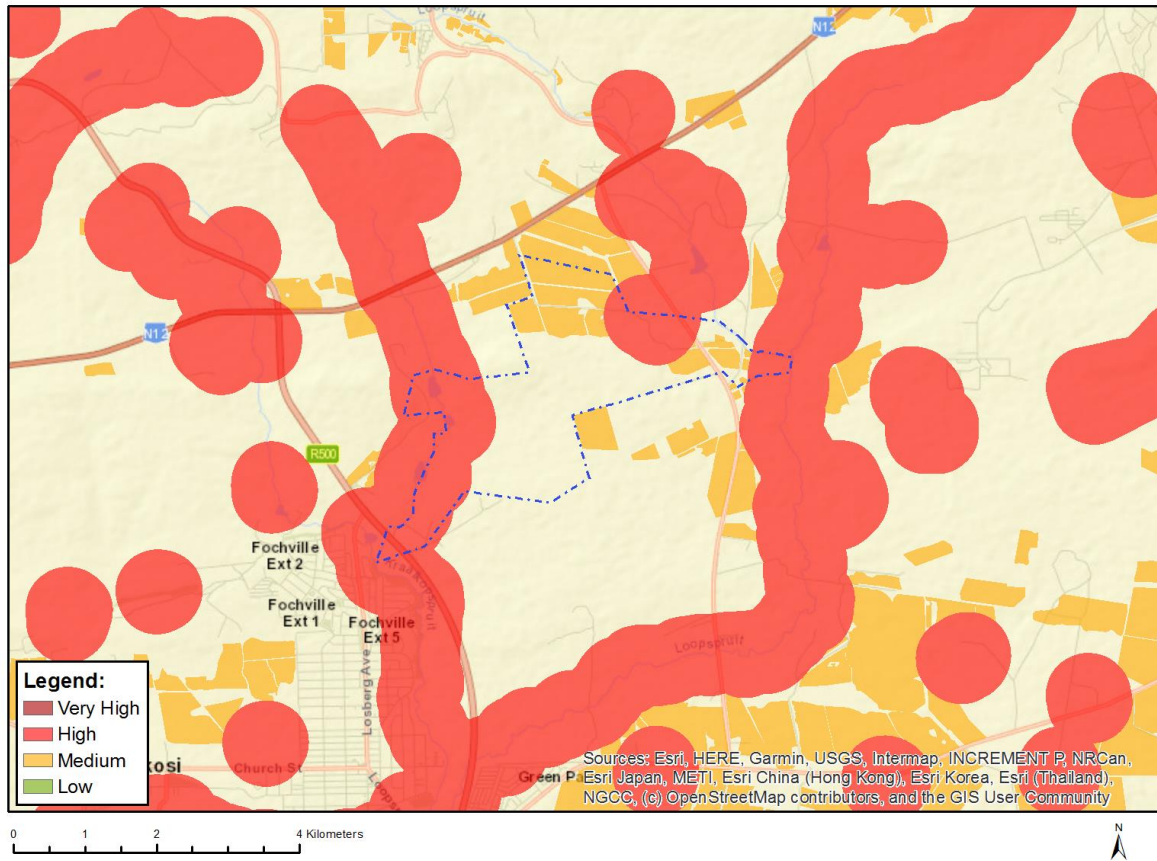


Very High sensitivity	High sensitivity	Medium sensitivity	Low sensitivity
			X

### Sensitivity Features:

Sensitivity	Feature(s)
Low	Area Outside Sensitivities

## MAP OF RELATIVE BATS (WIND) THEME SENSITIVITY

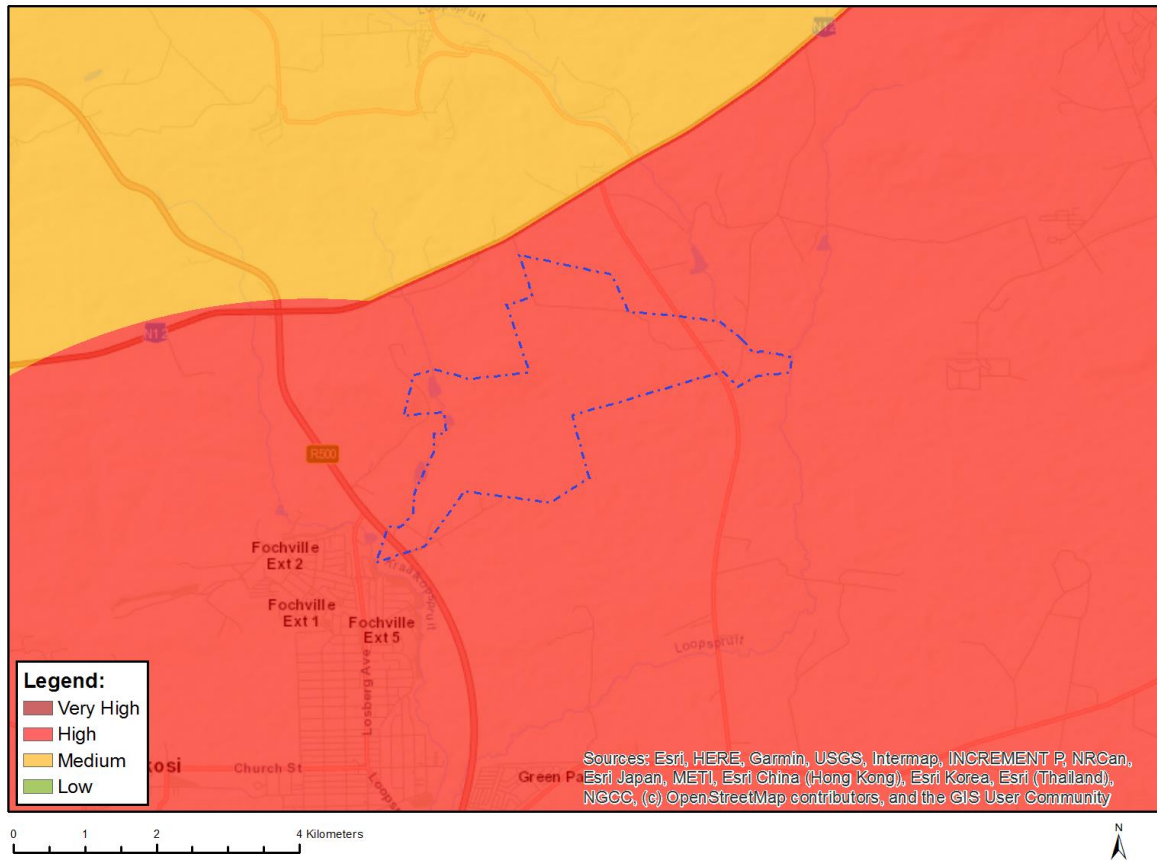


Very High sensitivity	High sensitivity	Medium sensitivity	Low sensitivity
	X		

### Sensitivity Features:

Sensitivity	Feature(s)
High	Within 500 m of a river
High	Wetland
High	Within 500 m of a wetland
Medium	Croplands

## MAP OF RELATIVE CIVIL AVIATION (WIND) THEME SENSITIVITY



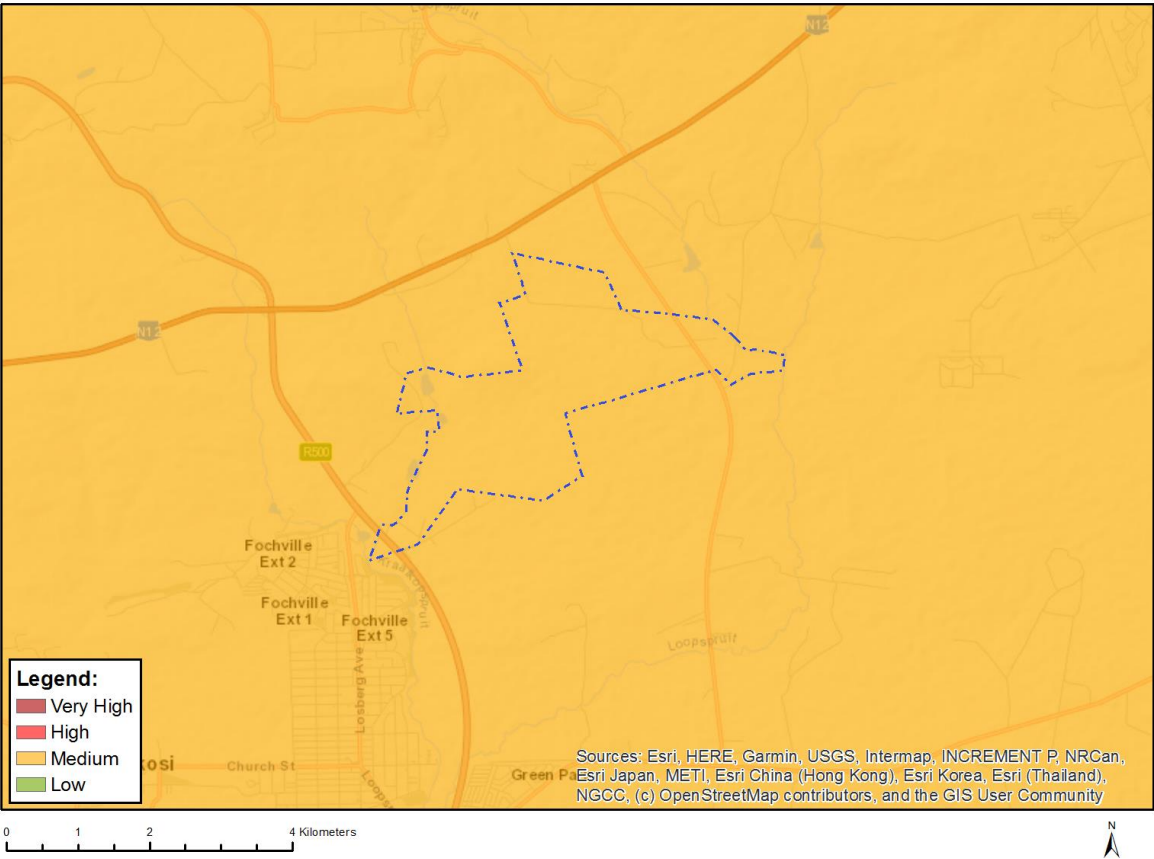
Very High sensitivity	High sensitivity	Medium sensitivity	Low sensitivity
	X		

### Sensitivity Features:

Sensitivity	Feature(s)
High	Within 8 km of other civil aviation aerodrome
High	Dangerous and restricted airspace as demarcated
Medium	Between 8 and 15 km of other civil aviation aerodrome



MAP OF RELATIVE DEFENCE (WIND) THEME SENSITIVITY

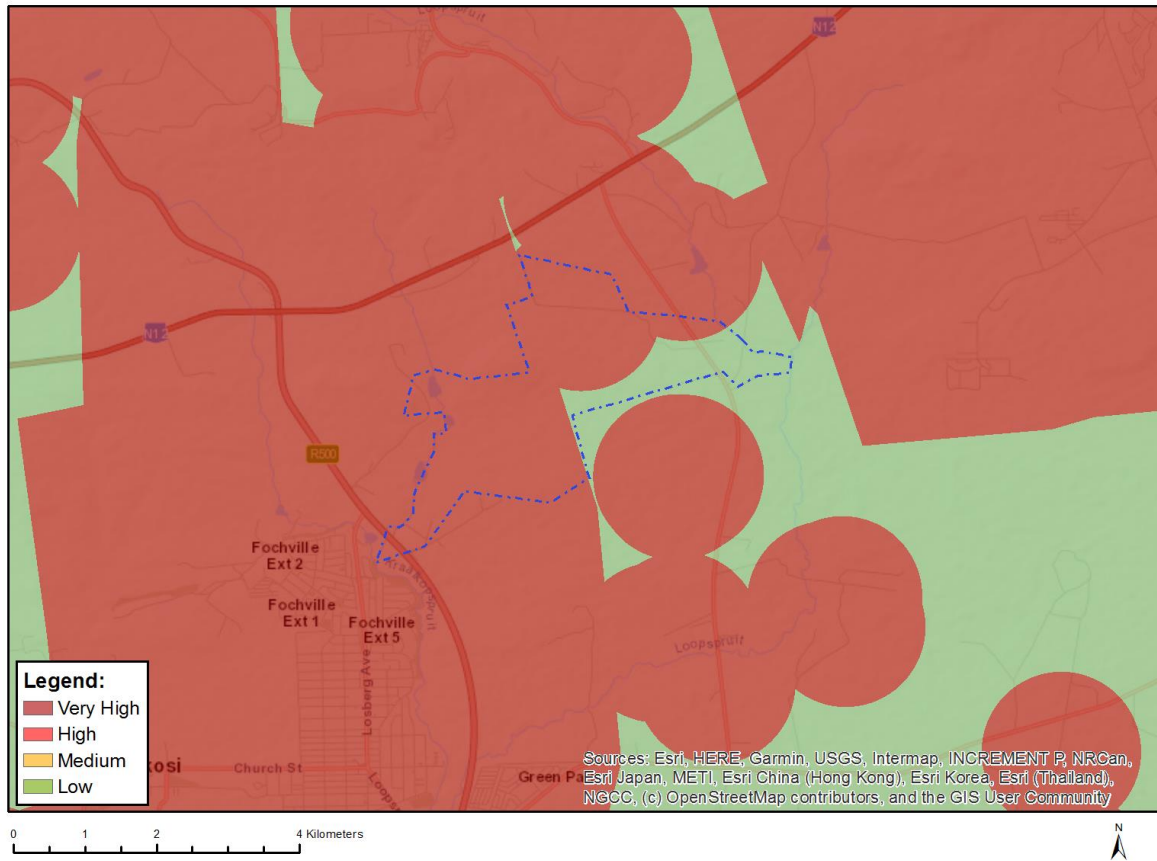


Very High sensitivity	High sensitivity	Medium sensitivity	Low sensitivity
		X	

Sensitivity Features:

Sensitivity	Feature(s)
Medium	Defence Site

## MAP OF RELATIVE FLICKER THEME SENSITIVITY

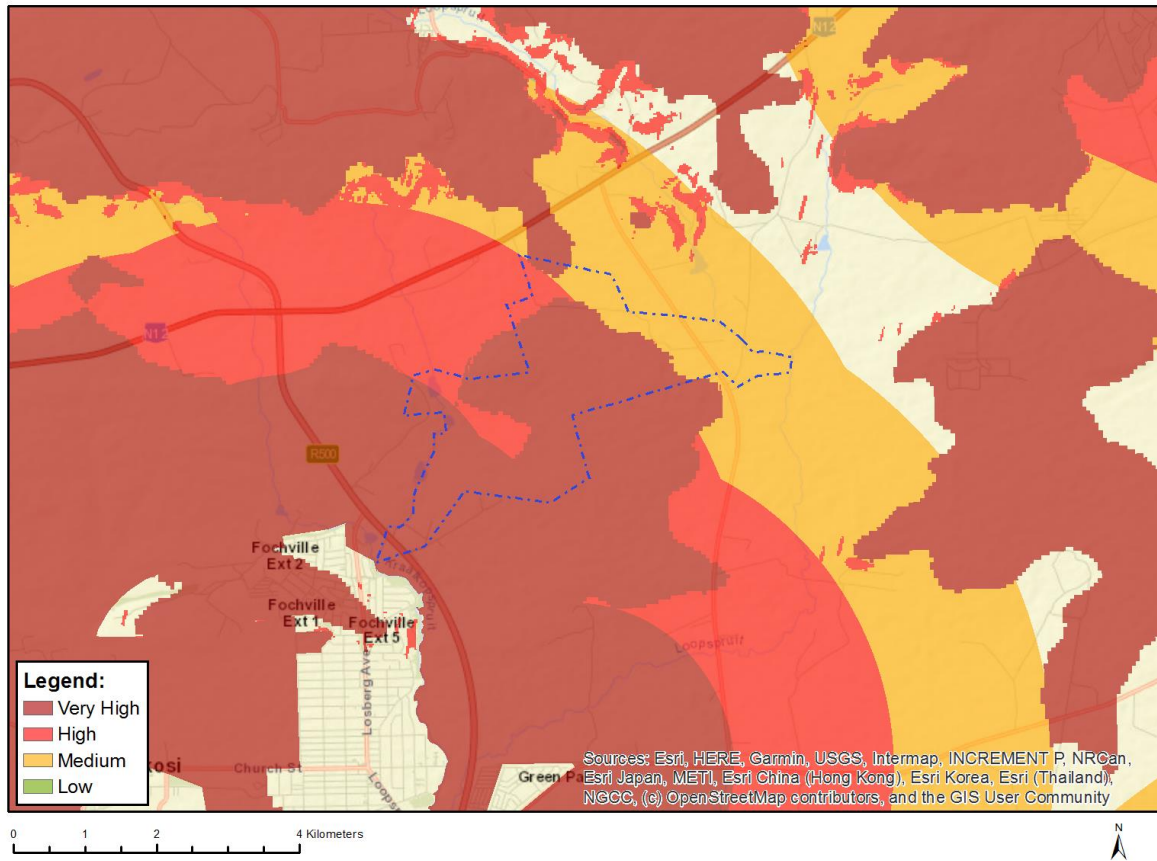


Very High sensitivity	High sensitivity	Medium sensitivity	Low sensitivity
X			

### Sensitivity Features:

Sensitivity	Feature(s)
Low	Area of low sensitivity
Very High	Potential temporarily or permanently inhabited residence
Very High	Inside the boundaries of a town
Very High	Potential temporarily or permanently inhabited residence; Inside the boundaries of a town

## MAP OF RELATIVE LANDSCAPE (WIND) THEME SENSITIVITY

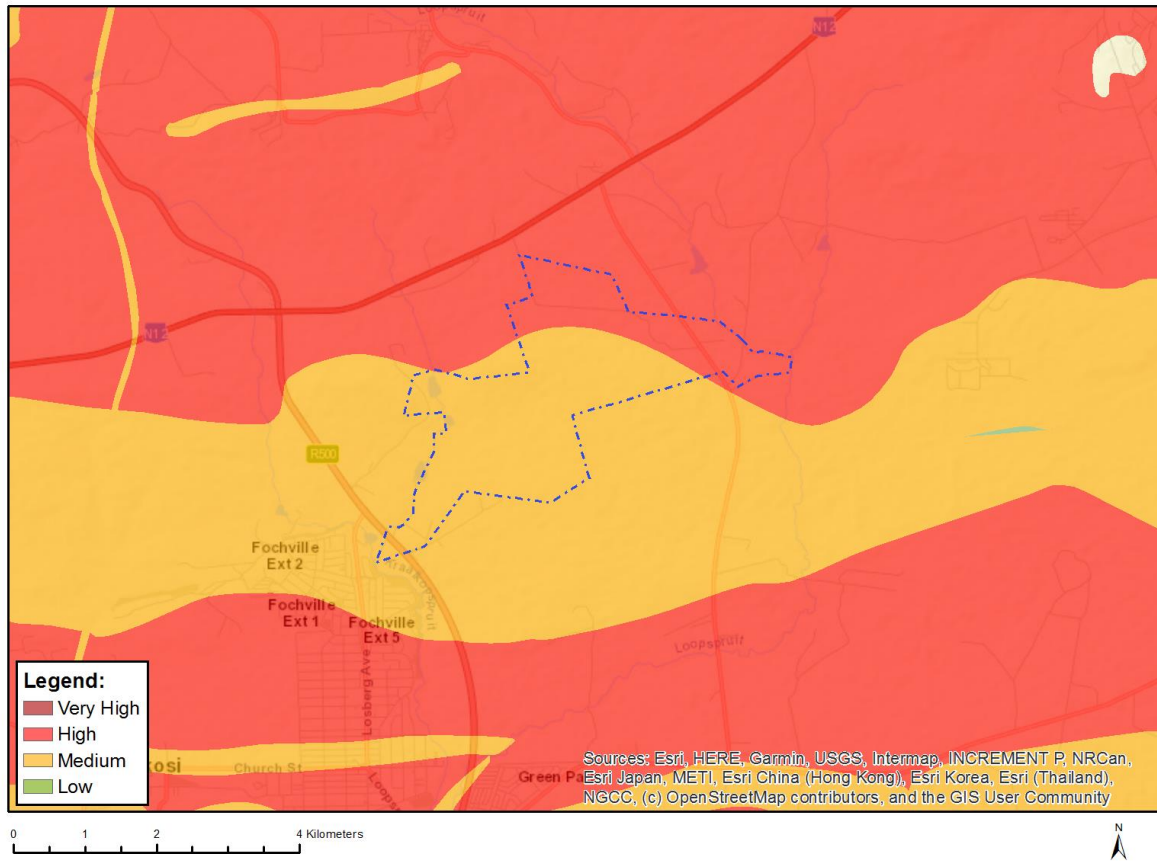


Very High sensitivity	High sensitivity	Medium sensitivity	Low sensitivity
X			

### Sensitivity Features:

Sensitivity	Feature(s)
High	Between 2 and 4 km of a town or village
High	Slope between 1:4 and 1:10
Low	Slope less than 1:10
Medium	Between 4 and 6 km of a town or village
Very High	Mountain tops and high ridges
Very High	Within 2 km of a town or village
Very High	Slope more than 1:4

## MAP OF RELATIVE PALEONTOLOGY THEME SENSITIVITY

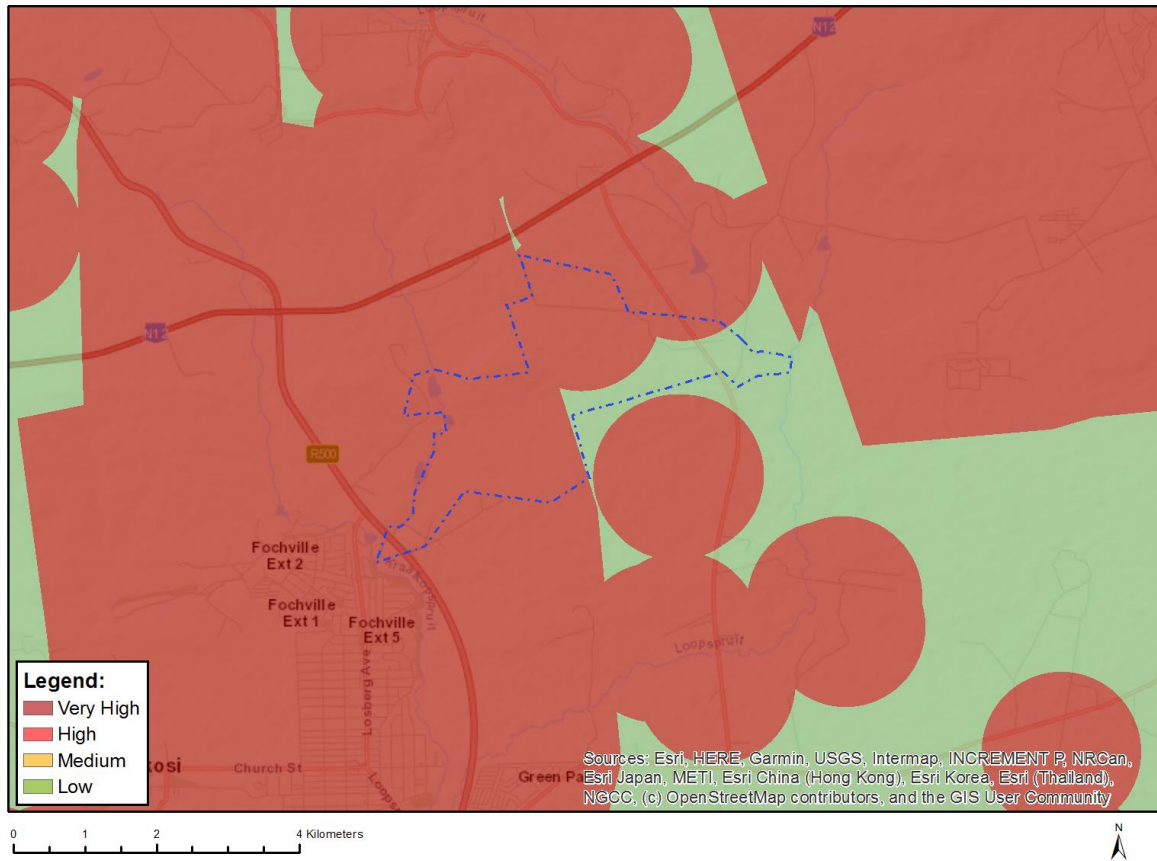


Very High sensitivity	High sensitivity	Medium sensitivity	Low sensitivity
	X		

### Sensitivity Features:

Sensitivity	Feature(s)
High	Features with a High paleontological sensitivity
Low	Features with a Low paleontological sensitivity
Medium	Features with a Medium paleontological sensitivity

## MAP OF RELATIVE NOISE THEME SENSITIVITY

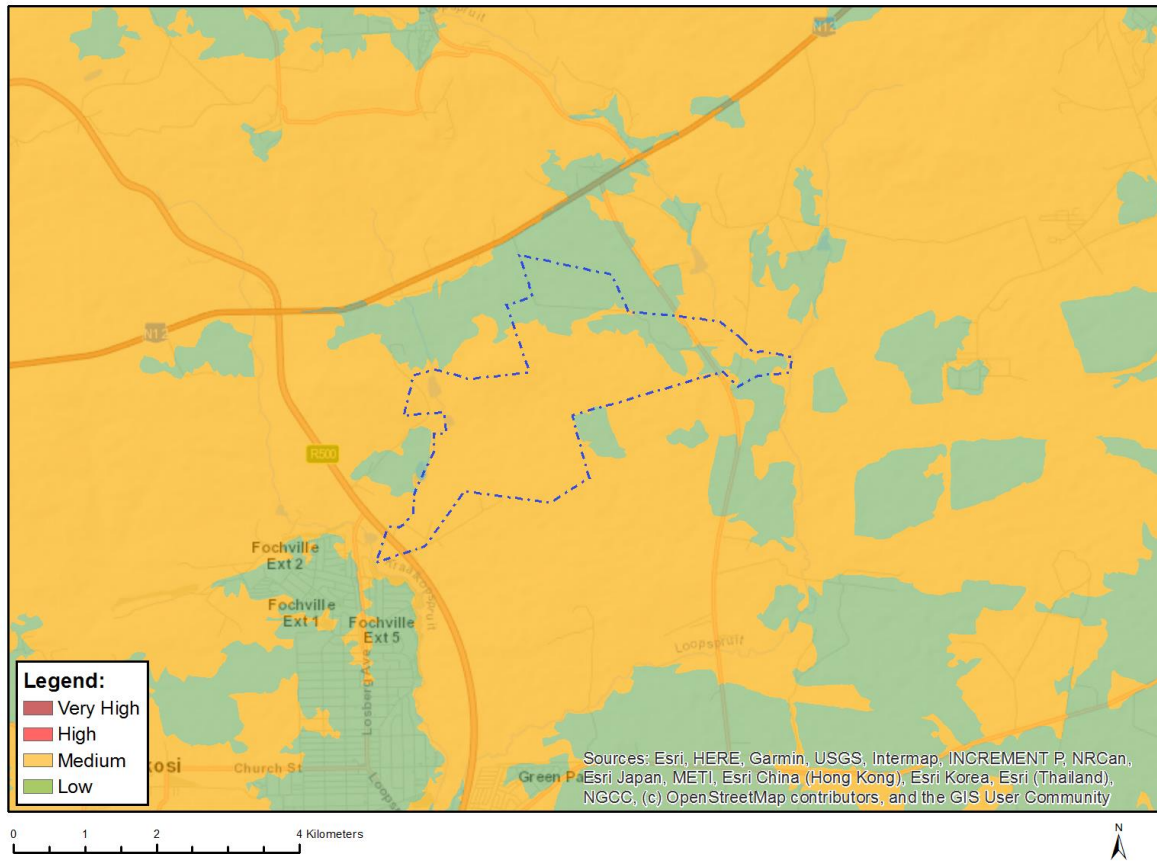


Very High sensitivity	High sensitivity	Medium sensitivity	Low sensitivity
X			

### Sensitivity Features:

Sensitivity	Feature(s)
Low	Area of low sensitivity
Very High	Potential temporarily or permanently inhabited residence
Very High	Inside the boundaries of a town
Very High	Potential temporarily or permanently inhabited residence; Inside the boundaries of a town

## MAP OF RELATIVE PLANT SPECIES THEME SENSITIVITY



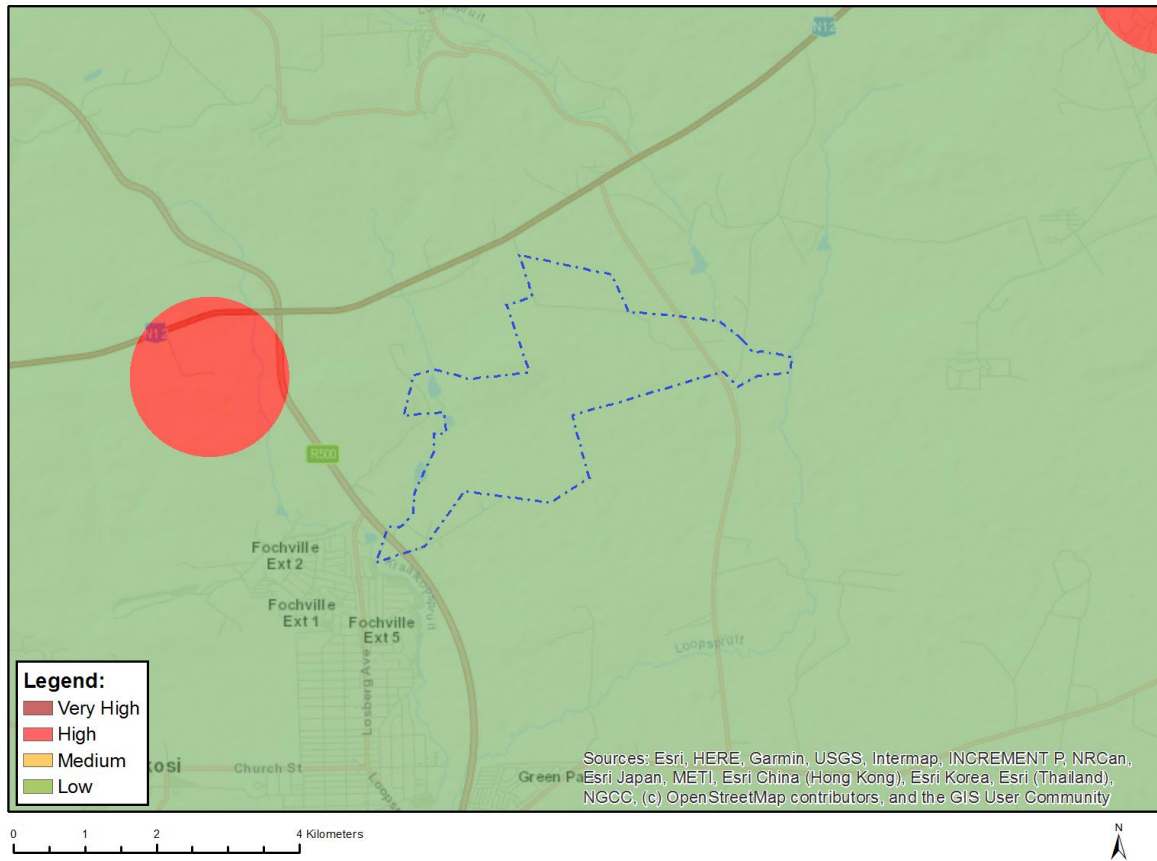
Where only a sensitive plant unique number or sensitive animal unique number is provided in the screening report and an assessment is required, the environmental assessment practitioner (EAP) or specialist is required to email SANBI at [eiadatarequests@sanbi.org.za](mailto:eiadatarequests@sanbi.org.za) listing all sensitive species with their unique identifiers for which information is required. The name has been withheld as the species may be prone to illegal harvesting and must be protected. SANBI will release the actual species name after the details of the EAP or specialist have been documented.

Very High sensitivity	High sensitivity	Medium sensitivity	Low sensitivity
		X	

### Sensitivity Features:

Sensitivity	Feature(s)
Low	Low Sensitivity
Medium	Sensitive species 1252
Medium	Khadia beswickii
Medium	Sensitive species 691
Medium	Sensitive species 1248

## MAP OF RELATIVE RFI (WIND) THEME SENSITIVITY

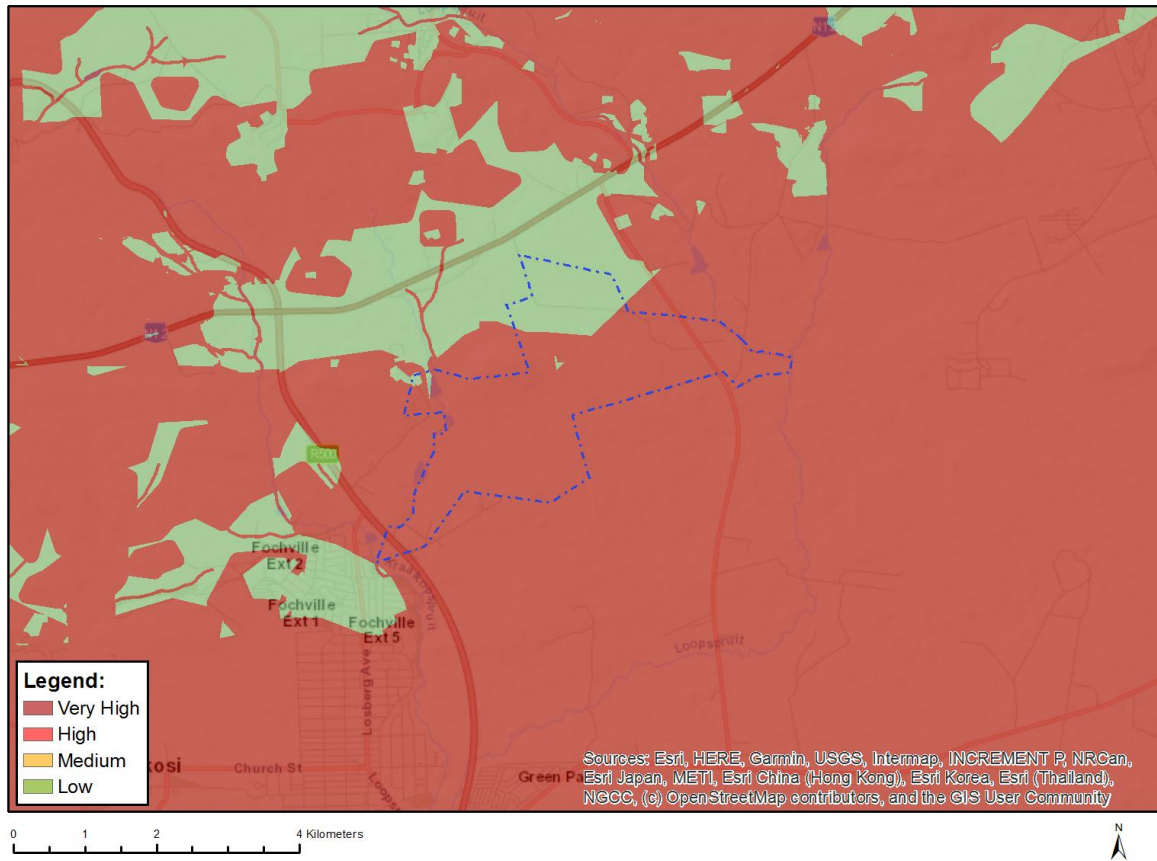


Very High sensitivity	High sensitivity	Medium sensitivity	Low sensitivity
			X

### Sensitivity Features:

Sensitivity	Feature(s)
Low	Low sensitivity for telecommunications;None;More than 60 km from a Weather Radar installation

## MAP OF RELATIVE TERRESTRIAL BIODIVERSITY THEME SENSITIVITY



Very High sensitivity	High sensitivity	Medium sensitivity	Low sensitivity
X			

### Sensitivity Features:

Sensitivity	Feature(s)
Low	Low Sensitivity
Very High	Critical biodiversity area 2
Very High	Ecological support area
Very High	Protected Areas Expansion Strategy
Very High	Vulnerable ecosystem