

Appendix C3:
Background Document Information

NOVEMBER
2020



ENVIRONMENTAL IMPACT ASSESSMENT PROCESS

ESTABLISHMENT OF TRANSMISSION INFRASTRUCTURE FOR THE 400MW GAS-TO-POWER
LOCATED IN RBIDZ ZONE 1F,

KWAZULU-NATAL PROVINCE

Richards Bay Gas Power 2 (Pty) Ltd proposed the development of a 275kV overhead power line to connect the authorised RBGP2 400MW gas-to-power facility located within Zone 1F of the Richards Bay Industrial Development Zone (IDZ) to the national grid via the authorised substation at the Eskom CCPP site. The power line will be operated at 132kV and will connect to the Eskom substation via a 132kV switching station.

The proposed grid infrastructure will be located in Alton, Richards Bay. The project site is situated in the City of uMhlatuze Local Municipality which falls within the jurisdiction of the King Cetshwayo District Municipality, KwaZulu-Natal Province.

It is the developer's intention to bid the 400MW gas-to-power plant together with the associated grid infrastructure into the procurement process initiated by the Independent Power Producer Office (IPP Office) for the procurement of up to 2000MW of dispatchable generation capacity from a range of technologies. This allocation is in accordance with the new generation capacity required as specified in the Integrated Resource Plan 2019 and accompanying ministerial determination from the Minister for the Department of Mineral Resources and Energy (DMRE) to which the National Energy Regulator of South Africa (NERSA) has concurred. The IPP Office has initiated procurement for the 2000MW of capacity under the Risk Mitigation Independent Power Producer Procurement Programme (RMIPPPP).

Aim of this background information document

This document aims to provide you, as an interested and/or affected party (I&AP), with:

- » an overview of the proposed project proposed by Richards Bay Gas Power 2 (Pty) Ltd.
- » an overview of the Environmental Impact Assessment (EIA) process and specialist studies being undertaken to assess the proposed project.
- » details of how you can become involved in the EIA process, receive information, or raise issues, which may concern and/or interest you.

Overview of the proposed project

Richards Bay Gas Power 2 (Pty) Ltd received Environmental Authorisation in 2016 for a 400MW gas-to-power plant located within Zone 1F of the Richards Bay IDZ. This authorisation included the connection of this facility via a 132kV connection to the Indus Substation bordering the site. Through consultation with Eskom, it has been determined that this connection is no longer feasible. Therefore, grid connection infrastructure, is proposed to connect the power station to a feasible grid connection point. The proposed grid connection infrastructure includes establishment of a 275kV overhead power line (to be operated at 132kV) and a 132kV switching station.

Two alternative power line corridors are being considered in the EIA process, each approximately 8.5km in length. Both alternatives include an assessment corridor of 300m. Only one switching station site has been identified for investigation. Where access roads do not exist, new roads will be constructed to access the infrastructure during the construction and operation phases.

The following properties are affected by this proposed project:

	Associated Properties
Corridor Alternative 1 and 2	Erf 1860, Erf 1906, Erf RE/1855, Erf 6724 Portion 6, Erf 1818, Erf 1858, Erf RE/1819, Erf 1813, Erf 16671, Erf 1814, Erf 6720, Erf 1856, Farm Reserve No.6, Erf 1859, Erf 1902, Erf 1903, Erf 1904, Erf 6724 Portion 1, Erf 6724 Portion 4, Erf 8817, Erf 8818, Erf 8825, Erf 9033, Erf 9074, Erf 11376 Portion 1, Erf 11376 Portion 2, Erf 11376 Portion 3, Erf 11376 Portion 4, Erf 11376 Portion 5, Erf 15406, Erf 15410, Erf 1667, Erf 16672, Erf 16875, Erf 16876, Erf 17455, Erf 17456, Erf 1817, Erf 1819 Portion 3, Erf RE/1794, Erf 6724 Portion 7, Erf 16785, Erf 17457, Erf 17458, Erf 1819 Portion 1, Erf 1819 Portion 2, Erf 11375, Erf 5333 Portion 46
Switching station	Erf 11376 Portion 5, Erf 11376 Portion 1, Erf 11375, Erf 6698, Erf 5333 Portion 7, Erf 5333, Erf 397



Environmental impact assessment process

In accordance with the EIA Regulations, 2014 (as amended) published in terms of Section 24(5) of the National Environmental Management Act (No. 107 of 1998) (NEMA), the applicant requires Environmental Authorisation (EA) from the National Department of Environment, Forestry and Fisheries (DEFF) in consultation with the KwaZulu-Natal Department of Economic Development, Environmental Affairs and Tourism (DEDEAT) for the development of the proposed project. In terms of Section 24(5) of NEMA, the EIA Regulations 2014 (as amended) and Listing Notices (GNR 327, GNR 325, and GNR 324), the application for EA is subject to the completion of Scoping/EIA processes. The application is required to be supported by comprehensive, independent environmental studies undertaken in accordance with the EIA Regulations, 2014 (as amended).

An EIA is an effective planning and decision-making tool. It allows for potential environmental consequences resulting from a proposed activity to be identified and appropriately managed during the construction, operation, and decommissioning phases of development. It also provides an opportunity for the project applicant to be forewarned of potential environmental issues, and allows for the resolution of issue(s) identified and reported on as part of the EIA process, as well as provides opportunity for dialogue with key stakeholders and Interested and Affected Parties (I&APs).

The EIA process being undertaken comprises two phases – i.e. Scoping and Impact Assessment - and involves the identification and assessment of environmental impacts through specialist studies, as well as public participation. The process followed in these two phases is as follows:

- » The **Scoping Phase** includes the identification and description of potential impacts associated with the proposed project through a desktop study and consultation with affected parties and key stakeholders. This phase considers the broader project area in order to identify and delineate any environmental fatal flaws, no-go or sensitive areas, as well as project alternatives in order to determine which should be assessed in more detail in the EIA Phase. Following the public review period of the Scoping report, this phase culminates in the submission of a final Scoping Report and Plan of Study for EIA to the competent authority for acceptance and approval to continue with the EIA phase of the process.
- » The **EIA Phase** involves a detailed assessment of potentially significant positive and negative impacts (direct, indirect, and cumulative) identified in the Scoping Phase. This phase considers a proposed development footprint and includes detailed specialist investigations (including field surveys), consideration of feasible alternatives and public consultation. Recommendations of practical and achievable mitigation and management measures are included in an Environmental Management Programme (EMPr) considering all phases of the project. Following a review of the EIA report and EMPr by stakeholders, this phase culminates in the submission of a Final EIA Report and EMPr to the competent authority for review and decision-making.

Savannah Environmental has been appointed as the independent environmental consultant responsible for managing the application for EA and undertaking the supporting EIA process required to identify and assess potential environmental impacts associated with the projects, as well as propose appropriate mitigation and management measures to be contained within the Environmental Management Programme (EMPr).

What are the potential environmental impacts associated with the proposed project?

Based on the nature and extent of the proposed project, the nature of the affected area, and experience of the consultants on similar projects, a number of potential environmental impacts associated with the proposed project have been identified at this stage. Site-specific social and environmental specialist studies will be undertaken for the identified corridor in order to delineate areas of potential sensitivity, assess impacts associated with the project and make recommendations regarding avoidance, management and mitigation of impacts. Specialist studies will consider the following:

- » Impacts on biodiversity, including ecology, freshwater ecology, fauna and flora.
- » Impacts on avifauna.
- » Impacts on soils and agricultural potential.
- » Impacts on heritage resources, including the archaeology and palaeontology.
- » Impacts on the social environment.
- » Impacts on the visual quality of the area.

specialist studies to be undertaken in the EIA phase will be informed by existing information, field observations and input from the public participation process. As an I&AP, your input is considered as an important part of the process, and we urge your involvement.

Public participation process

The sharing of information forms the basis of the public participation process and offers you the opportunity to become actively involved in the EIA process from the outset. Comments and inputs from I&APs during the EIA process are encouraged in order to ensure that all potential impacts are considered within the ambit of the study.

The public involvement process aims to ensure that:

- » Information containing all relevant facts in respect of the application are made available to I&APs for review.
- » Participation by potential I&APs is facilitated in such a manner that I&APs are provided with a reasonable opportunity to comment on the application.
- » Adequate review period is provided for I&APs to comment on the findings of the Scoping and EIA reports.

Your responsibilities as an I&AP

In terms of Section 24J of the National Environmental Management Act, Act 107 of 1998 and the Department of Environmental Affairs Public Participation Guideline 2017, as part of the EIA process, an I&AP has the responsibility to:

- » Provide comment regarding the proposed project within the specified timeframes.
- » Submit written comment directly to the EAP.
- » Disclose any direct business, financial, personal, or other interest which that I&AP may have in the approval or refusal of the applications.



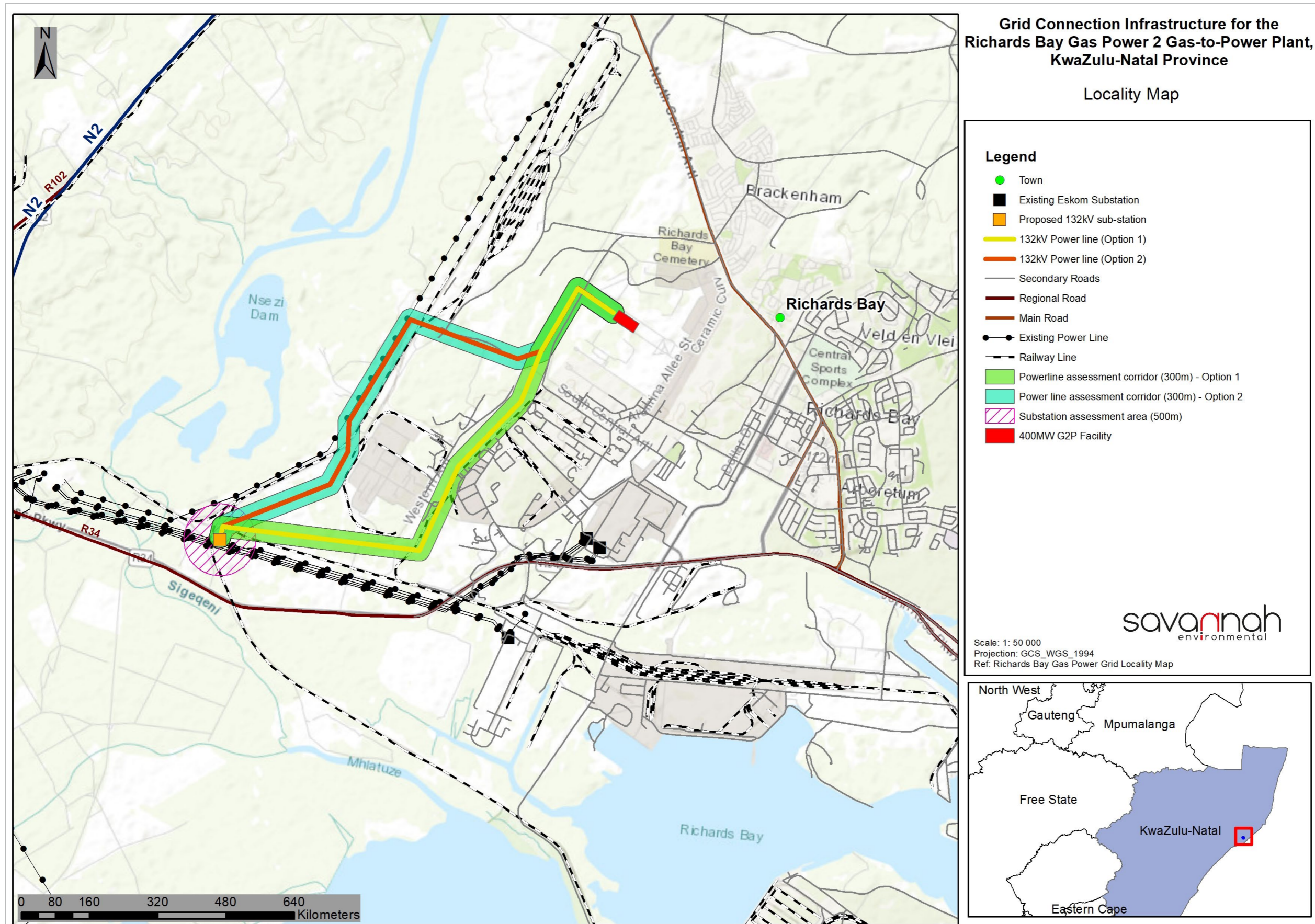
How to become involved

1. By responding (by phone, fax or email) to our invitation for your involvement which has been advertised in local news papers and on site.
2. By returning the attached Reply Form to the relevant contact person.
3. By attending the virtual meetings to be held during the course of the EIA process.
4. By contacting the consultants with queries or comments.
5. By reviewing and commenting on the Scoping and EIA reports within the stipulated 30-day review periods.

If you consider yourself an I&AP for the project, we urge you to make use of the opportunities created by the public participation process to provide comment or raise those issues and concerns which affect and/or interest you, and about which you would like more information. Your input into this process forms a key element of the EIA process.



Figure 1: Locality Map





COMMENTS AND QUERIES

Direct all comments, queries or responses to:

Savannah Environmental

Nicolene Venter

P.O. Box 148, Sunninghill, 2157

Tel: 011 656 3237

Fax: 086 684 0547

Email: publicprocess@savannahsa.com

To view project documentation, visit

www.savannahSA.com



ENVIRONMENTAL IMPACT ASSESSMENT AND
PUBLIC PARTICIPATION PROCESSES

PROPOSED GRID CONNECTION INFRASTRUCTURE FOR THE 400MW GAS-TO-POWER LOCATED IN RBIDZ ZONE 1F,
KWAZULU-NATAL PROVINCE

November 2020

Return completed registration and comment form to: **Nicolene Venter** or **Ronald Baloyi** of **Savannah Environmental**

Phone: 011 656 3237 / **Mobile (incl. 'please call me'):** 060 978 8396 / **Fax:** 086 684 0547

E-mail: publicprocess@savannahsa.com

Postal Address: PO Box 148, Sunninghill, 2157

Your registration as an interested and/or affected party will be applicable for this project only and your contact details provided are protected by the PoPI Act of 2013

Please provide your complete contact details:

Name & Surname:

Organisation:

Designation:

Postal Address:

Telephone:

Fax:

Mobile:

E-mail:

**Please register me as an Interested and Affected Party (I&AP) on the project's database
(please indicate your preference by ✓ the applicable box):**

YES

NO

In terms of EIA Regulations, 2014, as amended, Regulation 43(1), you are required to register as an I&AP to receive further correspondence regarding the Basic Assessment and/or Scoping and EIA process and to disclose any direct business, financial, personal or other interest which you may have in the approval or refusal of the application (add additional pages if necessary):

Please list your comments regarding the proposed project, EIA process and content of the Scoping Report (add additional pages if necessary):

Please provide contact details of any other persons who you regard as a potential interested or affected party:

Name & Surname:

Postal Address:

Telephone:

Mobile:

E-mail: