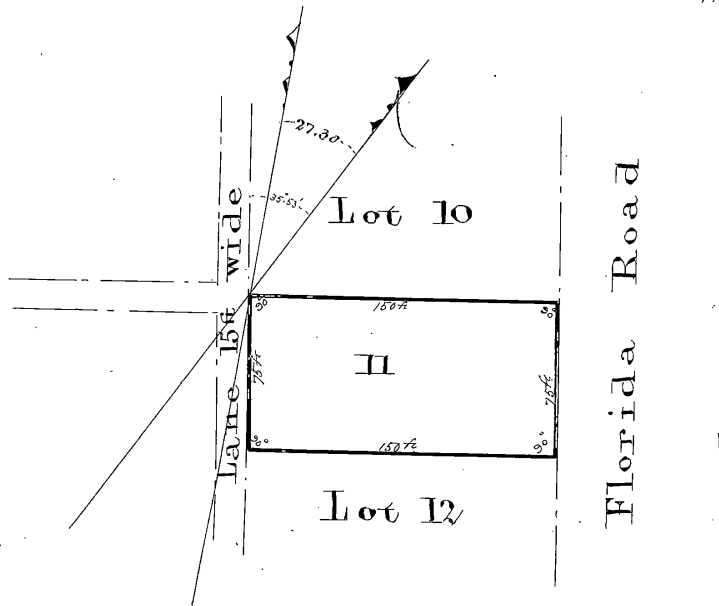


SV 112 F 11

REPAIRS REPLACES/RELOCATED	VIDE SJ. 10 1033/1997
-------------------------------	--------------------------

S. G. O.
 Sub. vol. 112 fol. 11
 14/3/93. *WJG*
 e 2



Reg. Div.
 PU

Now LOT... 912... DURBAN

The above Diagram represents a piece of Land containing
 a Acres 1 Roods 01.32 Perches, being Lot 11 Block
 A L, situate on the Town Lands of the Borough of Durban, in the
 Colony of Natal. It is bounded on the North by Lot 10, East
 by Florida Road, South by Lot 12, and West by
Lane 15ft. wide

Surveyed by me,
William K. Cap
 Government Surveyor.

T889/1896

November, 1892.

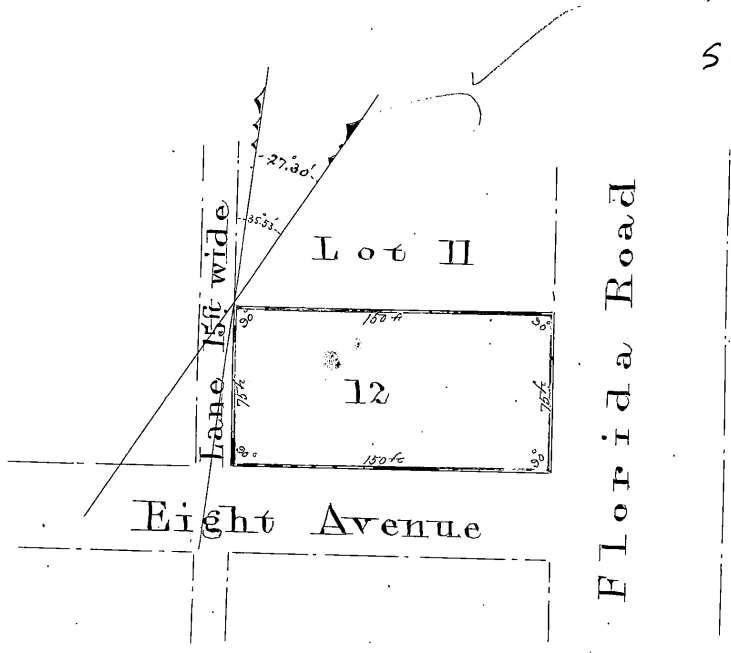
13100
 S45

FOR ENDORSEMENTS, etc., SEE PAGE

SV112 F12

REASON REPLACED/RELOCATED	VIDE N.R. 1033/1997
------------------------------	---------------------

S. 40
Sub. vol. 112 fol. 12
11/3/93
M3
e 2
SV 112 F 12



Scale of Feet



Reg. Div.
FU

Now LOT... 9/3... DURBAN

The above Diagram represents a piece of Land containing
0 Acres. 1 Perches 01.32 Perches, being Lot 12 Block
A.L., situate on the Town Lands of the Borough of Durban, in the
Colony of Natal. It is bounded on the North by Lot 11, East
by Florida Road, South by Eight Avenue, and West by
Lane 15ft wide

Surveyed by me,

William A. P.

Government Surveyor.

T207/1894

November, 1892.

S45

13100

FOR ENDORSEMENTS, etc., SEE CASE