



Figure 1: Showing existing farm access off the N14



Figure 4: Typical vegetation and topography on central site alternative.

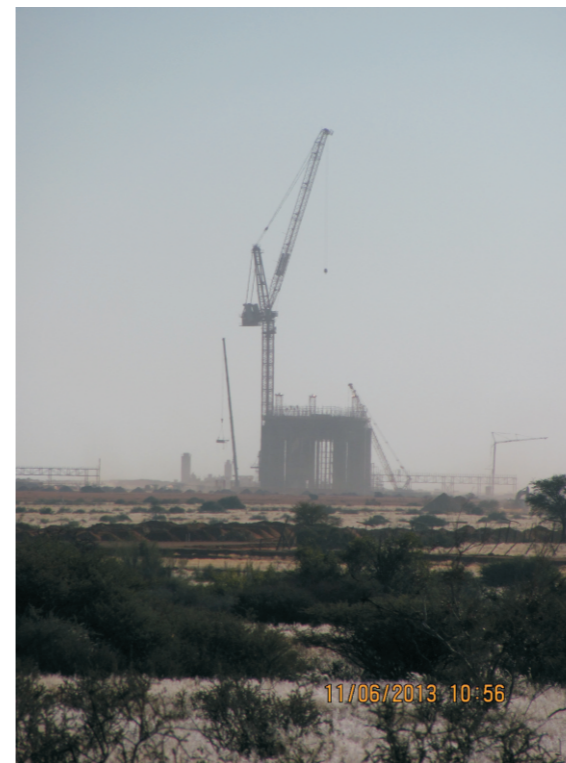


Figure 7: Showing Concentrated Solar Power Plant (CSP) currently under construction on an adjacent property.



Figure 9: Existing 133Kv Powerline on the adjacent property.



Figure 2: Showing District Road D3276



Figure 5: Showing main drainage channel on the property.



Figure 8: Showing existing borehole on site which is been investigated as a potential water source for the washing of panels.

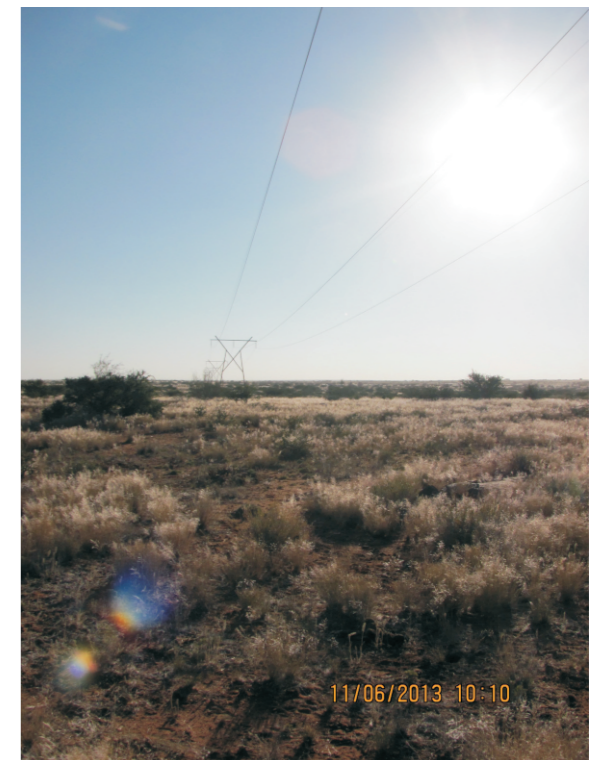


Figure 10: Existing 133Kv Powerline crossing the property.



Figure 3: .Showing existing access track on the property.



Figure 6: Showing typical vegetation and topography on norther site alternative.