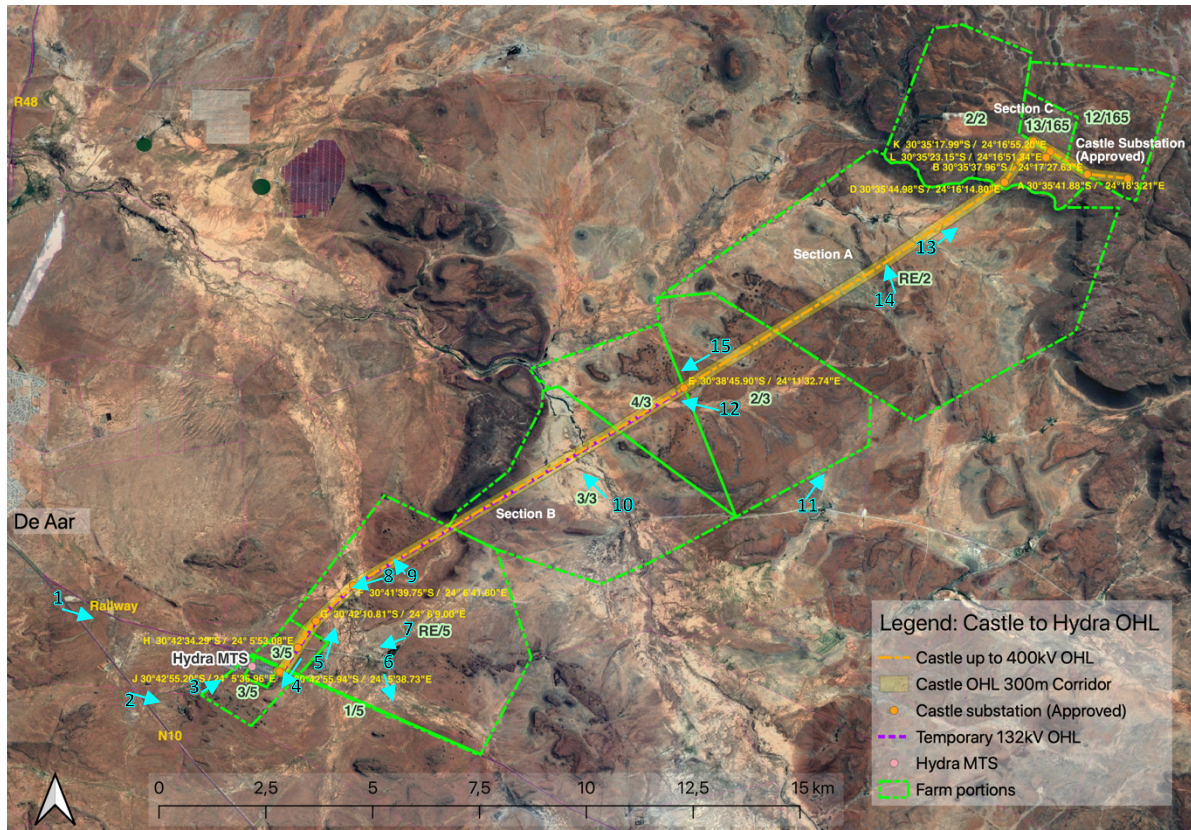


Annexure H, Site photographs

- Location of site photos taken on 22 April 2022. Photo numbers coincide with numbering below.
- Coordinates are for orientation purposes only (WGS 84).
- Directions provide indicate general direction of the photo.



Map 1: Photo orientation map indicating approximate location of along the proposed development area of the OHL.



Figure 1: Hydra MTS where the proposed Castle to Hydra OHL will connect into the national Eskom grid in the background with numerous transmission lines feeding into it in the foreground ($30^{\circ}42'0.59''S$; $24^{\circ}2'31.68''E$, Direction SE).



Figure 2: Turnoff towards Hydra MTS from the N10 (30°43'21.14"S; 24° 3'36.48"E, Direction SE).



Figure 3: Access road from the N10 towards Hydra MTS in the background (30°43'4.47"S; 24° 4'33.16"E, Direction NE).



Figure 4: Existing OHL's feeding into Hydra MTS. The proposed OHL will run in parallel to these existing lines along Section B. Note the nature of the track required for maintenance of the OHL (30°42'35.40"S; 24° 5'52.22"E, Direction SW).



Figure 5: Typical landscape in the area with trees close to farmsteads and waterholes and the rest of the area dominated by low karoo vegetation with a strong grass element evident after good seasonal rains. OHL's visible in the background (30°42'32.47"S; 24° 6'13.93"E, Direction N).



Figure 6: Railway line which crosses the proposed OHL route just before the Hydra MTS (30°42'45.26"S; 24° 6'54.83"E, Direction SE).



Figure 7: View from one of the farmstead access roads towards the Hydra MTS. Note the wind turbines on the ridge in the background (30°42'34.74"S; 24° 7'22.96"E, Direction WSW).



Figure 8: View of existing OHL's on Farm Wag 'n Bietjie (30°41'55.52"S; 24° 7'32.97"E, Direction WSW).



Figure 9: View of existing OHL's on Farm Wag 'n Bietjie along which the proposed OHL will run (30°41'21.04"S; 24° 7'25.53"E, Direction NW).



Figure 10: View of existing OHL's on Carolus Poort along which the proposed OHL will run (30°41'21.04"S; 24° 7'25.53"E, Direction NW).



Figure 11: View of the properties over which the proposed OHL's will span, Carolus Poort in the foreground and Slingershoek in the background (30°40'36.11"S; 24°13'18.69"E, Direction NW).



Figure 12: View of the existing OHL's spanning farm Carolus Poort in the foreground (30°39'17.02"S; 24°12'25.30"E, Direction NW).



Figure 13: View of the existing OHL's spanning farm Slingershoek and heading up the ridgeline to Farm Vendussie Kuil (30°37'45.49"S; 24°14'19.65"E, Direction NE).



Figure 14: View of the existing OHL's spanning farm Slingershoek with the De Aar South windfarm in the background (30°39'5.63"S; 24°12'58.95"E, Direction N).



Figure 15: View of the existing OHL's spanning farm Carolus Poort (border of Portion 3 and 4 on the ridgeline) this is where Section A (new OHL) and B (Upgraded OHL) will connect (30°38'28.01"S; 24°12'1.85"E, Direction SW).