

## Appendix I: Emergency Preparedness, Response and Fire Management Plan

### 1. PURPOSE

The purpose of the Emergency Preparedness, Response and Fire Management Plan is:

- » To assist contractor personnel to prepare for and respond quickly and safely to emergency incidents, and to establish a state of readiness which will enable prompt and effective responses to possible events.
- » To control or limit any effect that an emergency or potential emergency may have on site or on neighbouring areas.
- » To facilitate emergency responses and to provide such assistance on the site as is appropriate to the occasion.
- » To ensure communication of all vital information as soon as possible.
- » To facilitate the reorganisation and reconstruction activities so that normal operations can be resumed.
- » To provide for training so that a high level of preparedness can be continually maintained.

This plan outlines response actions for potential incidents of any size. It details response procedures that will minimise potential health and safety hazards, environmental damage, and clean-up efforts. The plan has been prepared to ensure quick access to all the information required in responding to an emergency event. The plan will enable an effective, comprehensive response to prevent injury or damage to the construction personnel, public, and environment during the project. Contractors are expected to comply with all procedures described in this document. A Method Statement should be prepared at the commencement of the construction phase detailing how this plan is to be implemented as well as details of relevant responsible parties for the implementation. The method statement must also reflect conditions of the IFC Performance Standard 1 and include the following:

- » Identification of areas where accidents and emergency situations may occur;
- » Communities and individuals that may be impacted;
- » Response procedure;
- » Provisions of equipment and resources;
- » Designation of responsibilities;
- » Communication; and
- » Periodic training to ensure effective response to potentially affected communities.

### 2. PROJECT-SPECIFIC DETAILS

The authorised Rietrug Wind Energy Facility (WEF) (12/12/20/1782/1/AM5) is located in the Karoo Hoogland Local Municipality, Northern Cape Province near the town of Sutherland. The project will comprise the following key infrastructure and components:

- » Up to 37 wind turbines with a height of up to 200m and rotor diameter of up to 200m.
- » The wind turbines will be connected to another by means of medium voltage cable. The cables will be buried approximately 1m below ground level;
- » An internal gravel road network will be constructed to facilitate movement between turbines on site. These roads will be 15m wide and 6km in length and will include drainage and cabling;
- » Some existing public roads may need to be upgraded to facilitate the turbine transport;
- » A hard standing laydown area of a maximum of 10 000 m<sup>2</sup> will be constructed; and
- » A site compound will be constructed for all contractors, this would be approximately 5 000m<sup>2</sup> in size.
- » A 10km portion of the existing access road will be upgraded and widened to a width of 7 metres to facilitate abnormal loads to the Rietrug WEF site

Due to the scale and nature of this development, it is anticipated that the following risks could potentially arise during the construction and operation phases:

- » Fires;
- » Leakage of hazardous substances;
- » Storage of flammable materials and substances;
- » Flood events;
- » Accidents; and
- » Natural disasters.

### **3. EMERGENCY RESPONSE PLAN**

There are three levels of emergency as follows:

- » Local Emergency: An alert confined to a specific locality.
- » Site Emergency: An alert that cannot be localised and which presents danger to other areas within the site boundary or outside the site boundary.
- » Evacuation: An alert when all personnel are required to leave the affected area and assemble in a safe location.

If there is any doubt as to whether any hazardous situation constitutes an emergency, then it must be treated as an Evacuation.

Every effort must be made to control, reduce or stop the cause of any emergency, provided it is safe to do so. For example, in the event of a fire, isolate the fuel supply and limit the propagation of the fire by cooling the adjacent areas. Then confine and extinguish the fire (where appropriate) making sure that re-ignition cannot occur.

#### **3.1. Emergency Scenario Contingency Planning**

##### **3.1.1. Scenario: Spill which would result in the contamination of land, surface or groundwater**

#### **OBJECTIVE: PREVENT AND MONITOR ACCIDENTAL LEAKAGES AND SPILLAGES**

- » All hazardous chemicals should be stored on bunded surfaces and no storage of such chemicals should be permitted within the riparian buffer zones
- » It must be ensured that all hazardous storage containers and storage areas comply with the relevant SABS standards to prevent leakage. All vehicles must be regularly inspected for leaks. Refuelling must take place on a sealed surface area to prevent ingress of hydrocarbons into topsoil; and
- » All spills, should they occur, should be immediately cleaned up and treated accordingly
- » All vehicles and other equipment (generators etc.) must be regularly serviced to ensure they do not spill oil. Vehicles should be refuelled on paved (impervious) areas. If liquid product is being transported it must be ensured this does not spill during transit.
- » Emergency measures and plans must be put in place and rehearsed in order to prepare for accidental spillage.
- » Diesel fuel storage tanks must be above ground in a bunded area.
- » Engines that stand in one place for an excessive length of time must have drip trays.
- » Vehicle and washing areas must also be on paved surfaces and the by-products removed to an evaporative storage area or a hazardous waste disposal site (if the material is hazardous).
- » Establish an effective record keeping system for accidental leakage/spillage incidents.
- » Excess or spilled concrete should be confined within the work area and then removed to a licensed landfill site.

- » Concrete shall be mixed on mortar boards, away from drainage channels and water courses.
- » The visible remains of the mixing of concrete, either solid or from washings, shall be physically removed and disposed of as waste at a licensed landfill site.
- » All excess aggregate shall also be removed from site.

## **i. Spill Prevention Measures**

Preventing spills must be the top priority at all operations which have the potential of endangering the environment. The responsibility to effectively prevent and mitigate any scenario lies with the Contractor and the ECO. In order to reduce the risk of spills and associated contamination, the following principles should be considered during construction and operation activities:

- » All equipment refuelling, servicing and maintenance activities should only be undertaken within appropriately sealed/contained or bunded designated areas.
- » All maintenance materials, oils, grease, lubricants, etc. should be stored in a designated area in an appropriate storage container.
- » No refuelling, storage, servicing, or maintenance of equipment should take place within sensitive environmental resources in order to reduce the risk of contamination by spills.
- » No refuelling or servicing should be undertaken without absorbent material or drip pans properly placed to contain spilled fuel.
- » Any fluids drained from the machinery during servicing should be collected in leak-proof containers and taken to an appropriate disposal or recycling facility.
- » If these activities result in damage or accumulation of product on the soil, the contaminated soil must be disposed of as hazardous waste. Under no circumstances shall contaminated soil be added to a spoils pile and transported to a regular disposal site.
- » Chemical toilets used during construction must be regularly cleaned. Chemicals used in toilets are also hazardous to the environment and must be controlled. Portable chemical toilets could overflow if not pumped regularly or they could spill if dropped or overturned during moving. Care and due diligence should be taken at all times.
- » Contact details of emergency services and HazMat Response Contractors are to be clearly displayed on the site. All staff are to be made aware of these details and must be familiar with the procedures for notification in the event of an emergency.

## **ii. Procedures**

The following action plan is proposed in the event of a spill:

1. Spill or release identified.
2. Assess person safety, safety of others and the environment.
3. Stop the spill if safely possible.
4. Contain the spill to limit entering surrounding areas.
5. Identify the substance spilled.
6. Quantify the spill (under or over guideline/threshold levels).
7. Notify the Site Manager and emergency response crew and authorities (in the event of major spill).
8. Inform users (and downstream users) of the potential risk.
9. Clean up of the spill using spill kit or by HazMat team.
10. Record of the spill incident on company database.

### **a) Procedures for containing and controlling the spill (i.e. on land or in water)**

Measures can be taken to prepare for quick and effective containment of any potential spills. Each contractor must keep sufficient supplies of spill containment equipment at the construction sites, at all times during and after the construction phase. These should include specialised spill kits or

spill containment equipment. Other spill containment measures include using drip pans underneath vehicles and equipment every time refuelling, servicing, or maintenance activities are undertaken.

Specific spill containment methods for land and water contamination are outlined below.

### Containment of Spills on Land

Spills on land include spills on rock, gravel, soil and/or vegetation. It is important to note that soil is a natural sorbent, and therefore spills on soil are generally less serious than spills on water as contaminated soil can be more easily recovered. It is important that all measures be undertaken to avoid spills reaching open water bodies located outside of the development footprint. The following methods could be used:

- » Dykes - Dykes can be created using soil surrounding a spill on land. These dykes are constructed around the perimeter or down slope of the spilled substance. A dyke needs to be built up to a size that will ensure containment of the maximum quantity of contaminant that may reach it. A plastic tarp can be placed on and at the base of the dyke such that the contaminant can pool up and subsequently be removed with sorbent materials or by pump into barrels or bags. If the spill is migrating very slowly, a dyke may not be necessary, and sorbents can be used to soak up contaminants before they migrate away from the source of the spill.
- » Trenches - Trenches can be dug out to contain spills. Spades, pickaxes or a front-end loader can be used depending on the size of the trench required. Spilled substances can then be recovered using a pump or sorbent materials.

#### b) Procedures for transferring, storing, and managing spill related wastes

Used sorbent materials are to be placed in plastic bags for future disposal. All materials mentioned in this section are to be available in the spill kits. Following clean up, any tools or equipment used must be properly washed and decontaminated or replaced if this is not possible.

Spilled substances and materials used for containment must be placed into empty waste oil containers and sealed for proper disposal at an approved disposal facility.

#### c) Procedures for restoring affected areas

Criteria that may be considered include natural biodegradation of oil, replacement of soil and revegetation. Once a spill of reportable size has been contained, the ECD and the relevant Authority must be consulted to confirm that the appropriate clean up levels are met.

### **3.1.2. Scenario: Fire (and fire water handling)**

#### Fire Management Plan

#### **OBJECTIVE: REDUCE THE RISK OF FIRE IN THE GRASSLAND ENVIRONMENT**

- » Construct fire-breaks around the site/footprint area before any other construction begins.
- » Prohibit smoking on-site or alternatively indicate designated smoking areas for staff.
- » Prohibit open fires.
- » Designate cooking areas for staff where fire hazard will be insignificant.
- » Educate staff of the dangers of open and unattended fires.
- » Educate staff as to proper fire safety.
- » Enforce proper waste management including disposal of flammable material (e.g. cigarette butts and packaging).

- » Place firefighting equipment at appropriate locations on site and ensure staff are aware of such equipment and associated procedure.
- » No fires are allowed around the construction area.
- » Welding, gas cutting or cutting of metal will only be permitted in an area designated as safe by the subcontractor.

i. Action Plan

The following action plan is proposed in the event of a fire:

1. Quantify risk.
2. Assess person safety, safety of others and the environment.
3. If safe – attempt to extinguish the fire using appropriate equipment.
4. If not safe to extinguish, contain fire.
5. Notify the Site Manager and emergency response crew and authorities.
6. Inform users of the potential risk of fire.
7. Record the incident on the company database or filing register.

ii. Procedures

Because large scale fires may spread very fast it is most advisable that the employee/contractor not put his/her life in danger in the case of an uncontrolled fire.

Portable firefighting equipment must be provided at strategic locations throughout the site, in line with the Building Code of South Africa and the relevant provincial building code. All emergency equipment including portable fire extinguishers, hose reels and hydrants must be maintained and inspected by a qualified contractor in accordance with the relevant legislation and national standards.

Current evacuation signs and diagrams for the building or site that are compliant to relevant state legislation must be provided in a conspicuous position, on each evacuation route. Contact details for the relevant emergency services should be clearly displayed on site and all employees should be aware of procedures to follow in the case of an emergency.

d) Procedures for initial actions

Persons should not fight the fire if any of the following conditions exist:

- » They have not been trained or instructed in the use of a fire extinguisher.
- » They do not know what is burning.
- » The fire is spreading rapidly.
- » They do not have the proper equipment.
- » They cannot do so without a means of escape.
- » They may inhale toxic smoke.

e) Reporting procedures

In terms of the requirements of NEMA, the responsible person must, within 14 days of the incident, report to the Director General, provincial head of department and municipality.

- » Report fire immediately to the site manager, who will determine if it is to be reported to the relevant emergency services and authorities.

» The Site Manager must have copies of the Report form to be completed.

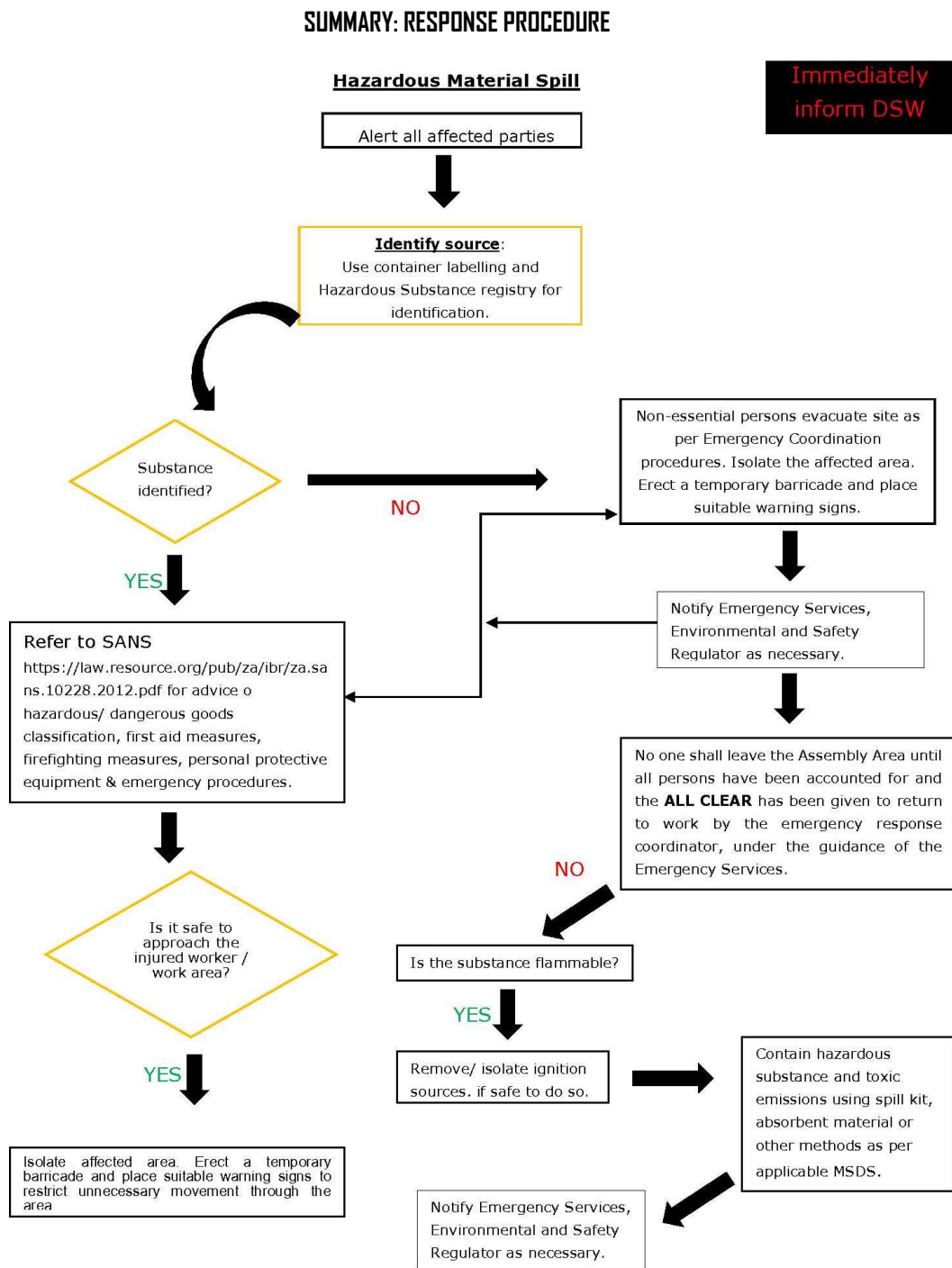
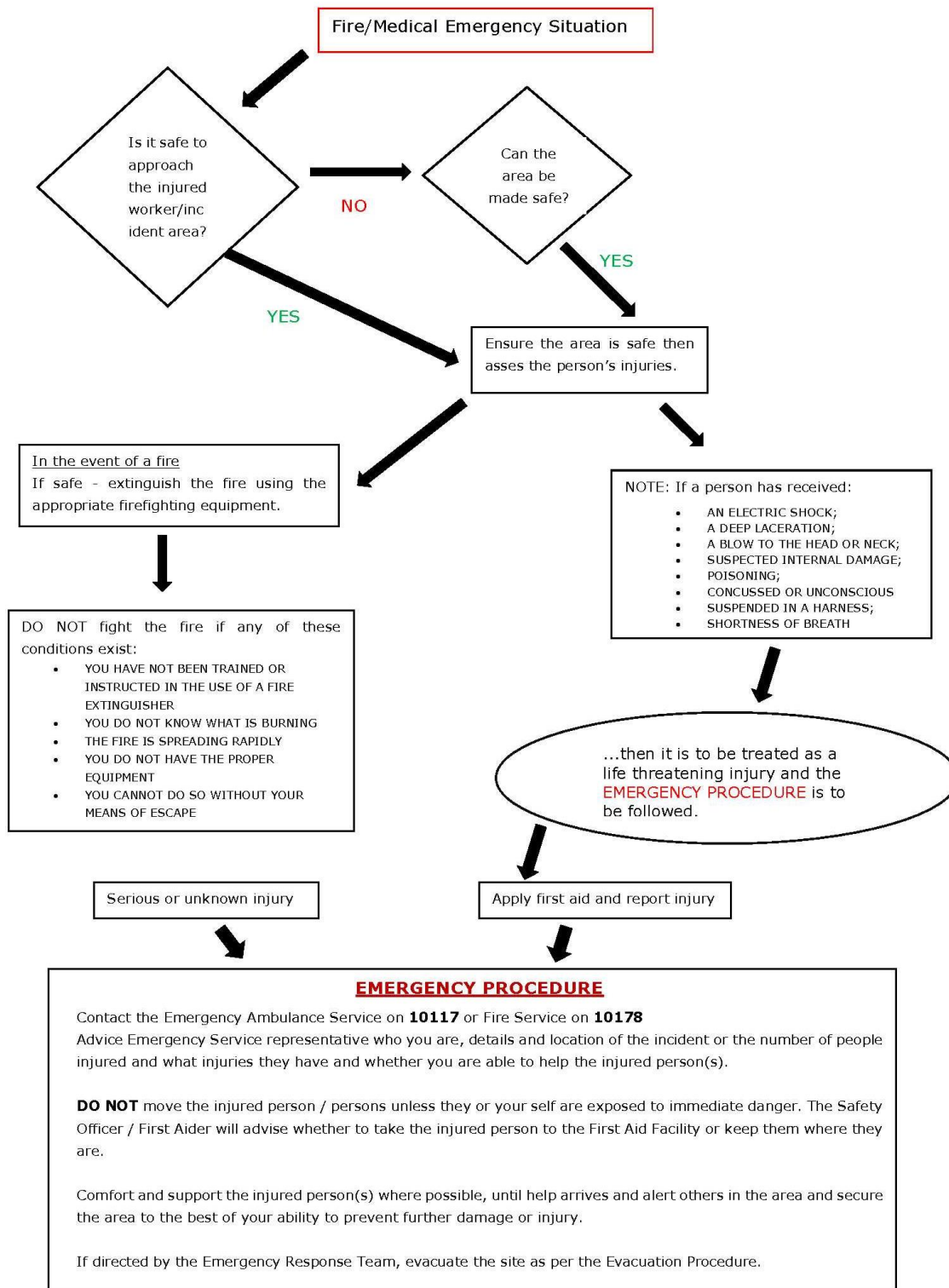


Figure 1: Hazardous Material Spill

## Fire/Medical Emergency Situation



**Figure 2: Emergency Fire/Medical**

#### **4. PROCEDURE RESPONSIBILITY**

The Contractor's Safety, Health and Environment (SHE) Representative, employed by the Contractor, is responsible for managing the day-to-day on-site implementation of this Plan, and for the compilation of regular (usually weekly) Monitoring Reports. In addition, the SHE must act as liaison and advisor on all environmental and related issues.

The local authorities will provide their assistance when deemed necessary, or when it has been requested and/or indicated in Section 30(8) of NEMA. The provincial authority will provide assistance and guidance where required and conduct awareness programmes.