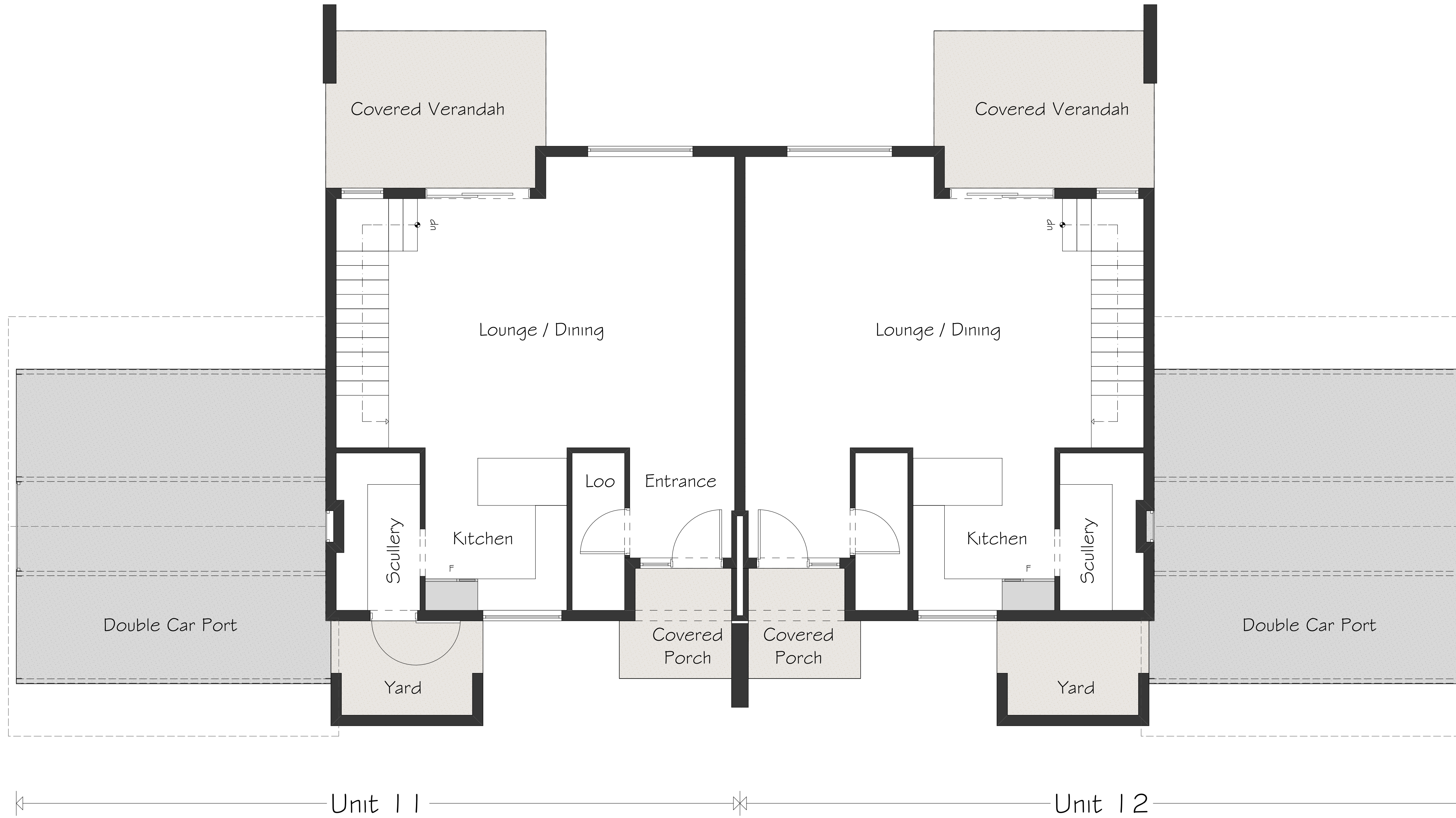
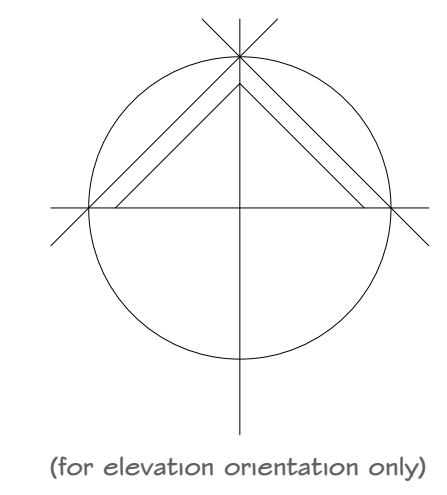


# AREAS

66.42m <sup>2</sup>	house - ground storey
12.44m <sup>2</sup>	covered verandah
3.98m <sup>2</sup>	covered porch
63.45m <sup>2</sup>	house - first storey
<b>146.29m<sup>2</sup></b>	<b>total</b>
36.00m <sup>2</sup>	car port



ground storey  
1:50



**1 EVERTON ROAD** TYPICAL UNIT  
PROJECT

REM OF ERF 1740 KLOOF

