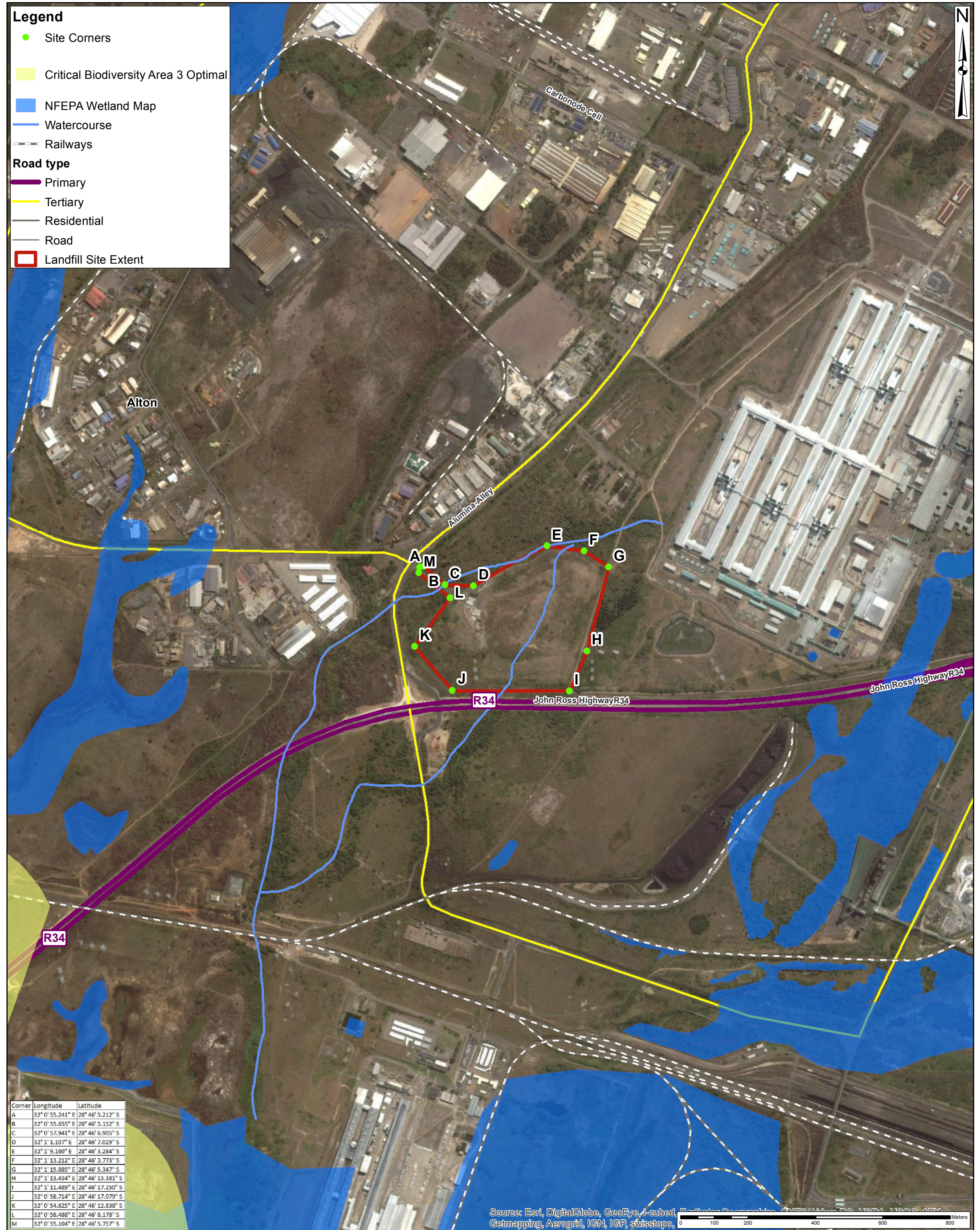


Legend

- Site Corners
- Critical Biodiversity Area 3 Optimal
- NFEPA Wetland Map
- Watercourse
- Railways

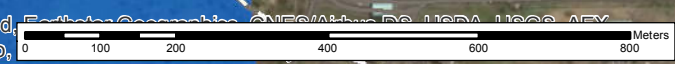
Road type

- Primary
- Tertiary
- Residential
- Road
- Landfill Site Extent



Corner	Longitude	Latitude
A	32° 0' 55.241" E	28° 46' 5.212" S
B	32° 0' 55.655" E	28° 46' 5.152" S
C	32° 0' 57.941" E	28° 46' 6.905" S
D	32° 1' 1.107" E	28° 46' 7.029" S
E	32° 1' 9.160" E	28° 46' 3.284" S
F	32° 1' 13.212" E	28° 46' 3.773" S
G	32° 1' 15.885" E	28° 46' 5.347" S
H	32° 1' 13.434" E	28° 46' 13.381" S
I	32° 1' 11.489" E	28° 46' 17.250" S
J	32° 0' 58.714" E	28° 46' 17.079" S
K	32° 0' 54.625" E	28° 46' 12.838" S
L	32° 0' 58.488" E	28° 46' 8.178" S
M	32° 0' 55.104" E	28° 46' 5.757" S

Source: Esri, DigitalGlobe, GeoEye, i-cubed, Earthstar Geographics, CNES/Airbus DS, USDA, USGS, AEX, Getmapping, Aerogrid, IGN, IGP, swisstopo, ...



Project Title:	DEA Waste Licenses 2015	Scale 1:10 000 <small>(When page size is: A3 portrait)</small>	Figure
Map Title:	Detailed Locality Map of Alton Landfill Site	Projection: Transverse Mercator Datum: Hartebeesthoek 1994 Central Meridian: 33.0 Compiled By: GA Maree GIS QC By: TBD Approved By: J Hayes Date Saved: 2015/11/27 Project Number: 60437185 Map Ref: DetailedLocalityMap.mxd Revision: 00	Sources: Source: Esri, DigitalGlobe, GeoEye, i-cubed, Earthstar Geographics, CNES/Airbus DS, USDA, USGS, AEX, Getmapping, Aerogrid, IGN, IGP, swisstopo, and the GIS User Community © OpenStreetMap & contributors
<small>Whilst every care has been taken in compiling the information on this map, AECOM cannot accept responsibility for any inaccuracies. © Copyright</small>		<small>Y:\17_Projects\60437185_DEA_Waste_Licenses_2015\mxd\DetailedLocalityMap.mxd</small>	

