

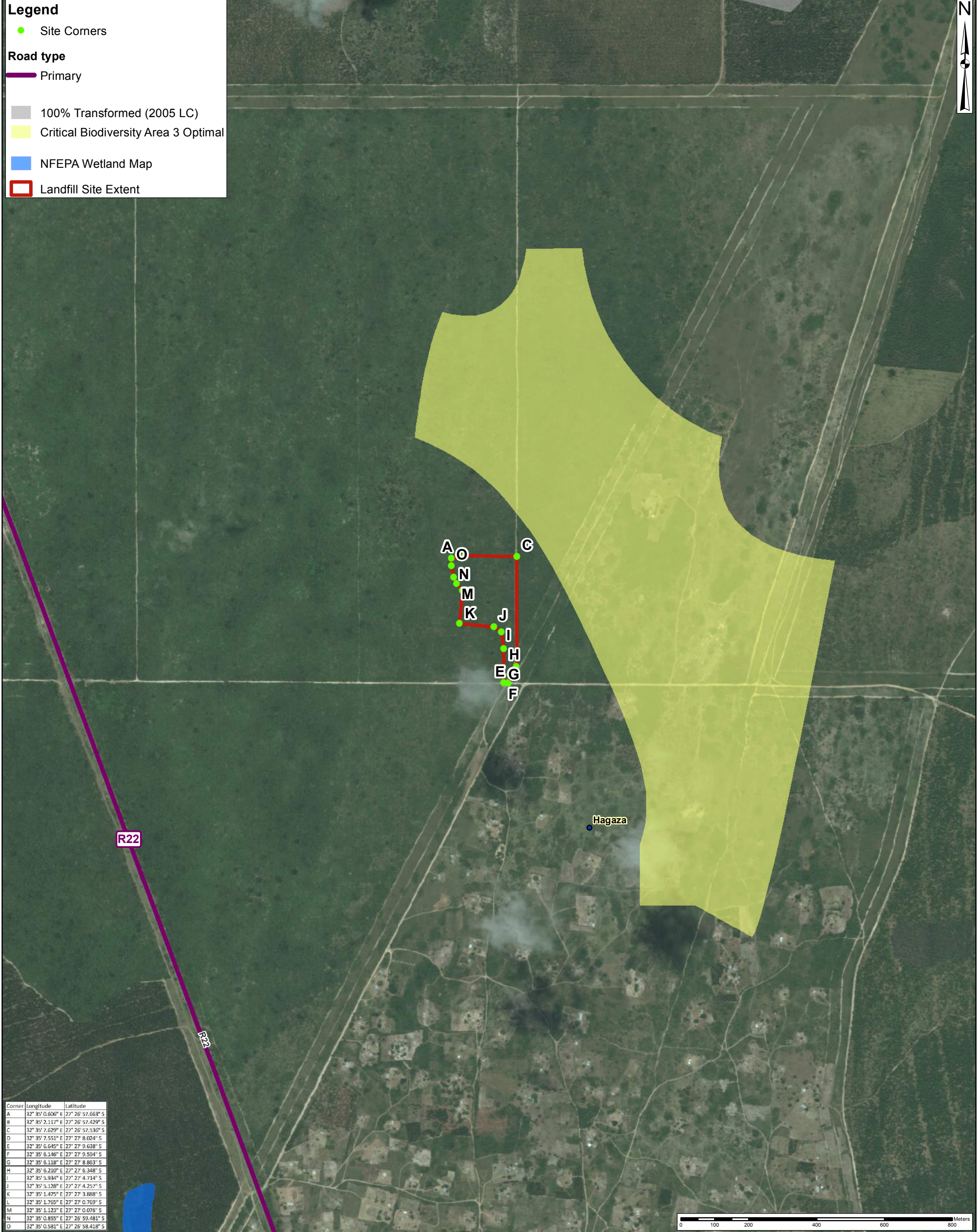
**Legend**

- Site Corners

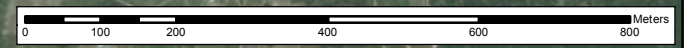
**Road type**

- Primary

- 100% Transformed (2005 LC)
- Critical Biodiversity Area 3 Optimal
- NFEPA Wetland Map
- Landfill Site Extent



Corner	Longitude	Latitude
A	32° 35' 0.606" E	27° 26' 57.663" S
B	32° 35' 2.117" E	27° 26' 57.429" S
C	32° 35' 7.629" E	27° 26' 57.536" S
D	32° 35' 7.551" E	27° 27' 8.024" S
E	32° 35' 6.645" E	27° 27' 9.638" S
F	32° 35' 6.146" E	27° 27' 9.594" S
G	32° 35' 6.118" E	27° 27' 8.863" S
H	32° 35' 6.210" E	27° 27' 6.348" S
I	32° 35' 5.934" E	27° 27' 4.714" S
J	32° 35' 5.128" E	27° 27' 4.257" S
K	32° 35' 1.475" E	27° 27' 3.888" S
L	32° 35' 1.765" E	27° 27' 0.769" S
M	32° 35' 1.123" E	27° 27' 0.076" S
N	32° 35' 0.855" E	27° 26' 59.481" S
O	32° 35' 0.581" E	27° 26' 58.419" S



Project Title:	<b>DEA Waste Licenses 2015</b>	Scale 1:10 000 <small>(When page size is: A3 portrait)</small>	<b>Figure</b>
Map Title:	<b>Detailed Locality Map of Mbazwana Landfill Site</b>	Projection: Transverse Mercator Datum: Hartebeesthoek 1994 Central Meridian: 33.0 Compiled By: GA Maree GIS QC By: TBD Approved By: J Hayes Date Saved: 2015/11/24 Project Number: 60437185 Map Ref: DetailedLocalityMap.mxd Revision: 00	<b>Sources:</b> Source: Esri, DigitalGlobe, GeoEye, i-cubed, Earthstar Geographics, CNES/Airbus DS, USDA, USGS, AEX, Getmapping, Aerogrid, IGN, IGP, swisstopo, and the GIS User Community © OpenStreetMap & contributors
<small>Whilst every care has been taken in compiling the information on this map, AECOM cannot accept responsibility for any inaccuracies. © Copyright</small>		<small>DDP Ref.: 13 of 13</small>	
		<small>Y:\17_Projects\60437185_DEA_Waste_Licenses_2015\mxd\DetailedLocalityMap.mxd</small>	