

**SCREENING REPORT FOR AN ENVIRONMENTAL AUTHORIZATION AS
REQUIRED BY THE 2014 EIA REGULATIONS – PROPOSED SITE
ENVIRONMENTAL SENSITIVITY**

EIA Reference number: Not Yet Assigned - Reference 14/12/16/3/3/2/1120


Project name: Basic Assessment for the Proposed Paulputs South WEF Grid Connection

Project title: Paulputs South WEF Grid Connection

Date screening report generated: 23/07/2021 06:40:35

Applicant: Paulputs Wind Energy Facility South (RF) (Pty) Ltd

Compiler: Arcus Consultancy Services South Africa (Pty) Ltd

Compiler signature: 

Application Category: Utilities Infrastructure | Electricity | Distribution and Transmission | Powerline

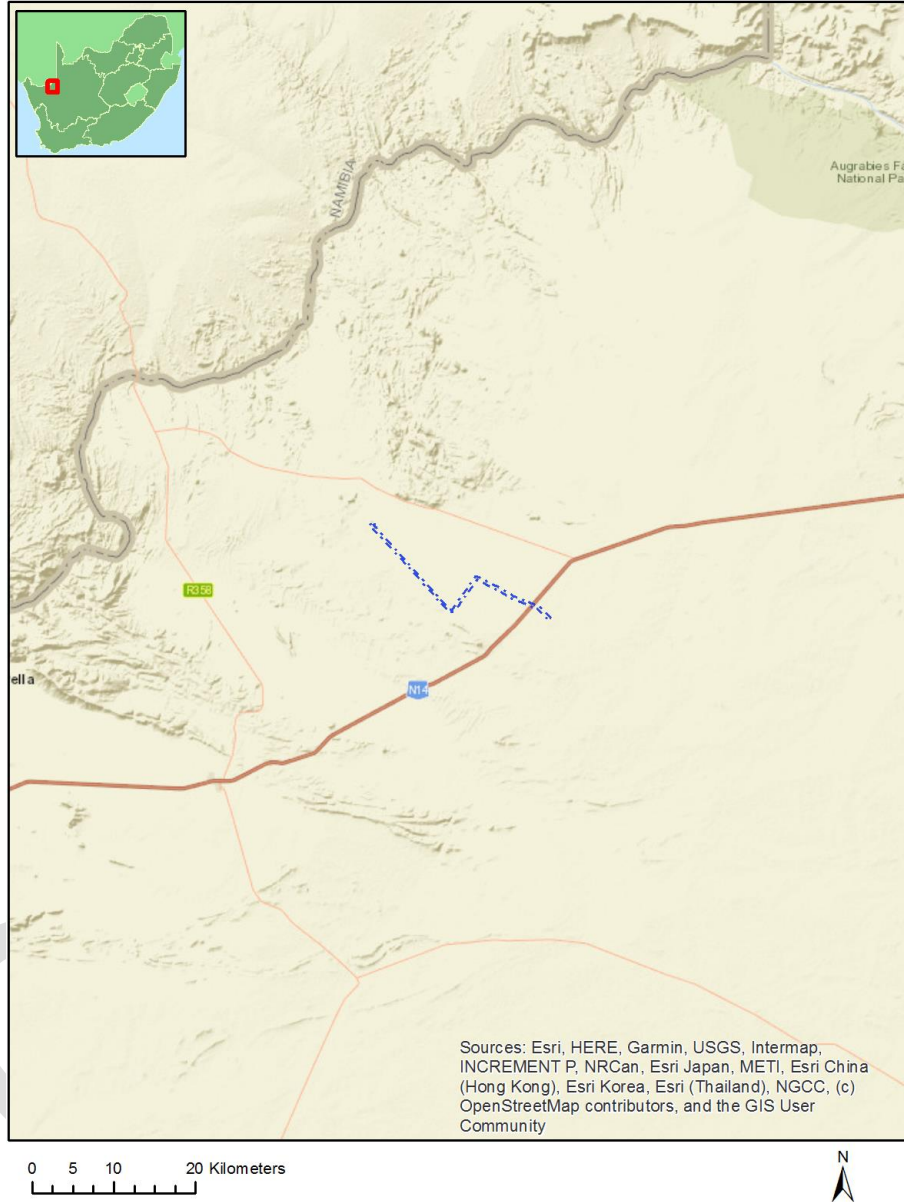
Table of Contents

- Proposed Project Location 3
 - Orientation map 1: General location 3
- Map of proposed site and relevant area(s) 4
 - Cadastral details of the proposed site 4
 - Wind and Solar developments with an approved Environmental Authorisation or applications under consideration within 30 km of the proposed area 5
 - Environmental Management Frameworks relevant to the application 5
- Environmental screening results and assessment outcomes 5
 - Relevant development incentives, restrictions, exclusions or prohibitions 6
- Map indicating proposed development footprint within applicable development incentive, restriction, exclusion or prohibition zones 7
 - Proposed Development Area Environmental Sensitivity 7
 - Specialist assessments identified 8
- Results of the environmental sensitivity of the proposed area 10
 - MAP OF RELATIVE AGRICULTURE THEME SENSITIVITY 10
 - MAP OF RELATIVE ANIMAL SPECIES THEME SENSITIVITY 11
 - MAP OF RELATIVE AQUATIC BIODIVERSITY THEME SENSITIVITY 12
 - MAP OF RELATIVE ARCHAEOLOGICAL AND CULTURAL HERITAGE THEME SENSITIVITY 13
 - MAP OF RELATIVE CIVIL AVIATION THEME SENSITIVITY 14
 - MAP OF RELATIVE DEFENCE THEME SENSITIVITY 15
 - MAP OF RELATIVE PALEONTOLOGY THEME SENSITIVITY 16
 - MAP OF RELATIVE PLANT SPECIES THEME SENSITIVITY 17
 - MAP OF RELATIVE TERRESTRIAL BIODIVERSITY THEME SENSITIVITY 18

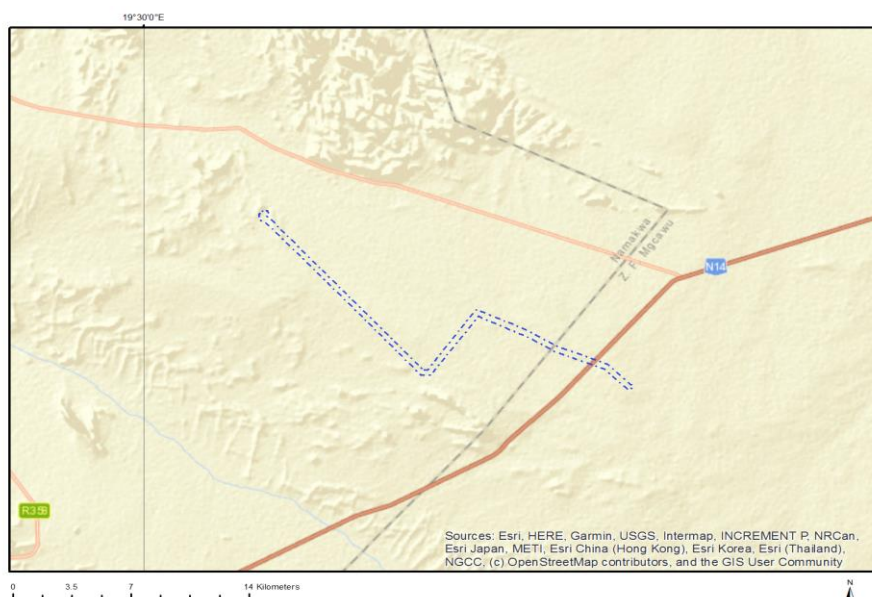
Proposed Project Location

Orientation map 1: General location

General Orientation: Basic Assessment for the Proposed Paulputs South WEF Grid Connection



Map of proposed site and relevant area(s)



Cadastral details of the proposed site

Property details:

No	Farm Name	Farm/ Erf No	Portion	Latitude	Longitude	Property Type
1	SCUIT-KLIP	92	0	28°53'56.27S	19°39'52.2E	Farm
2	GEMSBOK VLAKE	140	0	29°1'23.56S	19°35'30.23E	Farm
3	KONKOONSIES	91	0	28°56'22.36S	19°32'21.35E	Farm
4	LUCAS VLEI	93	0	28°58'6.22S	19°48'50.5E	Farm
5	KONKOONSIES	91	1	28°58'5.17S	19°34'6.88E	Farm Portion
6	KONKOONSIES	91	6	28°53'30.26S	19°33'37.23E	Farm Portion
7	SCUIT-KLIP	92	4	28°52'11.6S	19°35'24.92E	Farm Portion
8	LUCAS VLEI	93	8	28°58'32.16S	19°43'12.82E	Farm Portion
9	SCUIT-KLIP	92	5	28°57'51.62S	19°40'34.8E	Farm Portion
10	LUCAS VLEI	93	2	28°58'44.44S	19°44'4.23E	Farm Portion
11	LUCAS VLEI	93	2	28°58'7.05S	19°42'46.68E	Farm Portion
12	SCUIT-KLIP	92	3	28°56'47.1S	19°41'50.09E	Farm Portion
13	SCUIT-KLIP	92	0	28°54'28.13S	19°39'23.54E	Farm Portion
14	LUCAS VLEI	93	1	28°57'37.76S	19°46'48.21E	Farm Portion
15	SCUIT-KLIP	92	1	28°52'8.22S	19°38'29.53E	Farm Portion
16	GEMSBOK VLAKE	140	1	28°58'23.99S	19°36'54.89E	Farm Portion

Development footprint¹ vertices:

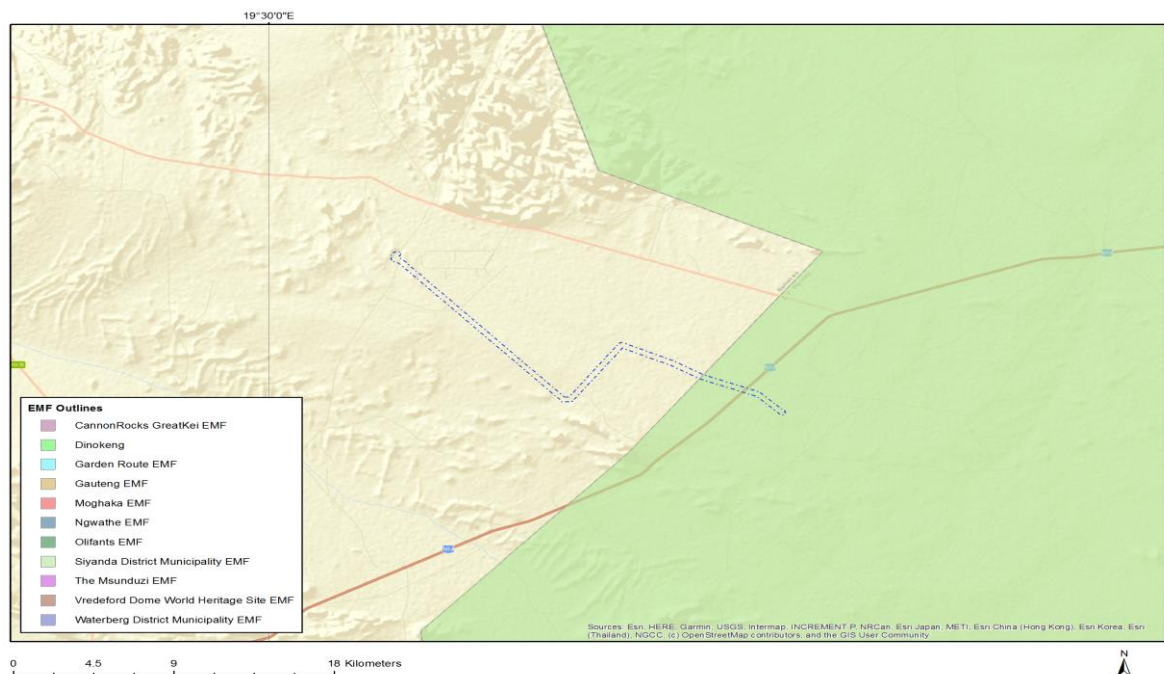
No development footprint(s) specified.

¹ “development footprint”, means the area within the site on which the development will take place and includes all ancillary developments for example roads, power lines, boundary walls, paving etc. which require vegetation clearance or which will be disturbed and for which the application has been submitted.

Wind and Solar developments with an approved Environmental Authorisation or applications under consideration within 30 km of the proposed area

No	EIA Reference No	Classification	Status of application	Distance from proposed area (km)
1	12/12/20/1832/3A	Solar CSP	Approved	0
2	12/12/20/1832	Solar CSP	Approved	0
3	12/12/20/1832/1A	Solar CSP	Approved	0
4	12/12/20/2098/1	Solar PV	Approved	0
5	12/12/20/2098	Solar PV	Approved	0
6	12/12/20/1832/2A	Solar CSP	Approved	0
7	12/12/20/2443	Solar PV	Approved	0

Environmental Management Frameworks relevant to the application



Environmental Management Framework	LINK
Siyanda District Municipality EMF	https://screening.environment.gov.za/ScreeningDownloads/EMF/SIYANDA_EMF_REPORT_2008.doc

Environmental screening results and assessment outcomes

The following sections contain a summary of any development incentives, restrictions, exclusions or prohibitions that apply to the proposed development site as well as the most environmental

sensitive features on the site based on the site sensitivity screening results for the application classification that was selected. The application classification selected for this report is: **Utilities Infrastructure | Electricity | Distribution and Transmission | Powerline.**

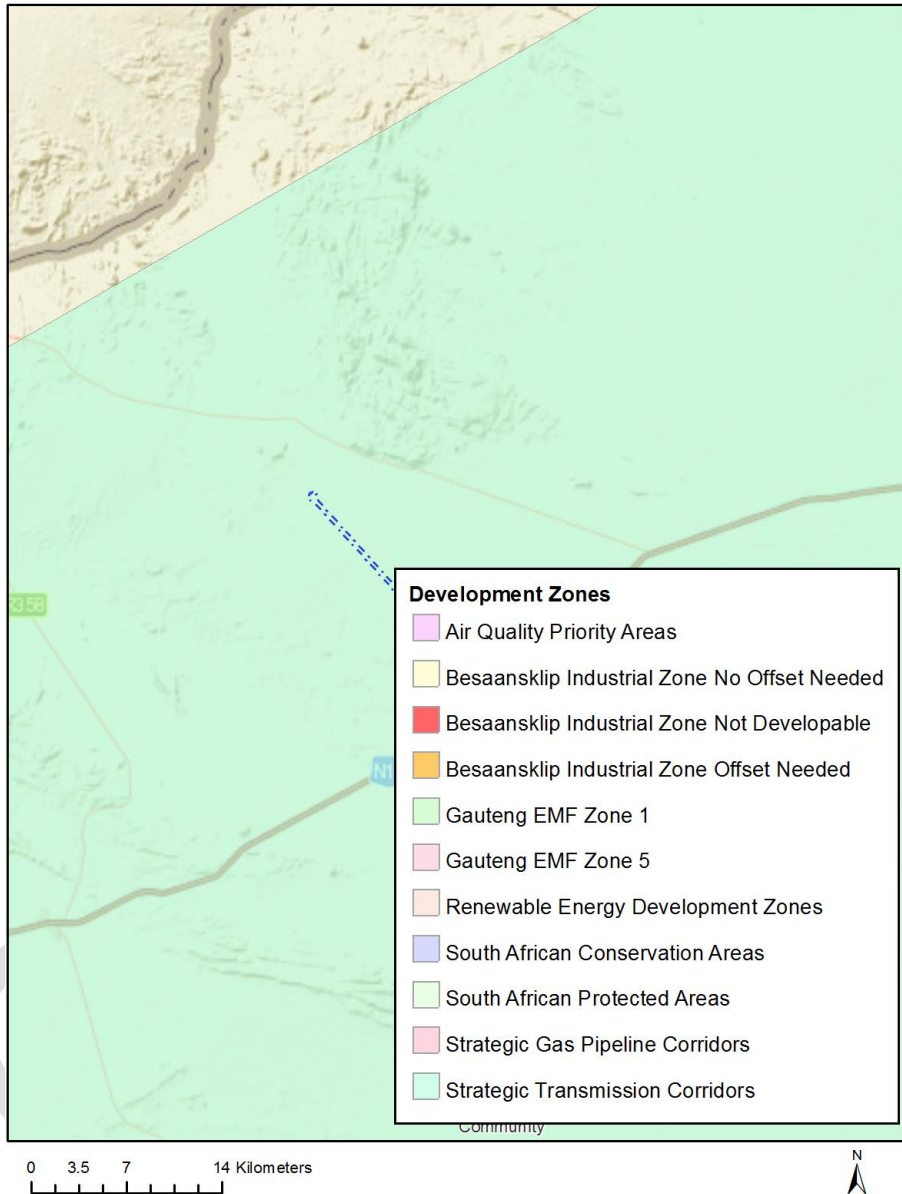
Relevant development incentives, restrictions, exclusions or prohibitions

The following development incentives, restrictions, exclusions or prohibitions and their implications that apply to this site are indicated below.

Incentive, restriction or prohibition	Implication
Strategic Transmission Corridor-Northern corridor	https://screening.environment.gov.za/ScreeningDownloads/DevelopmentZones/GN_113_16_February_2018.pdf

Map indicating proposed development footprint within applicable development incentive, restriction, exclusion or prohibition zones

Project Location: Basic Assessment for the Proposed Paulputs South WEF Grid Connection



Proposed Development Area Environmental Sensitivity

The following summary of the development site environmental sensitivities is identified. Only the highest environmental sensitivity is indicated. The footprint environmental sensitivities for the proposed development footprint as identified, are indicative only and must be verified on site by a suitably qualified person before the specialist assessments identified below can be confirmed.

Theme	Very High sensitivity	High sensitivity	Medium sensitivity	Low sensitivity
-------	-----------------------	------------------	--------------------	-----------------

Agriculture Theme			X	
Animal Species Theme		X		
Aquatic Biodiversity Theme	X			
Archaeological and Cultural Heritage Theme		X		
Civil Aviation Theme				X
Defence Theme				X
Paleontology Theme			X	
Plant Species Theme			X	
Terrestrial Biodiversity Theme	X			

Specialist assessments identified

Based on the selected classification, and the environmental sensitivities of the proposed development footprint, the following list of specialist assessments have been identified for inclusion in the assessment report. It is the responsibility of the EAP to confirm this list and to motivate in the assessment report, the reason for not including any of the identified specialist study including the provision of photographic evidence of the site situation.

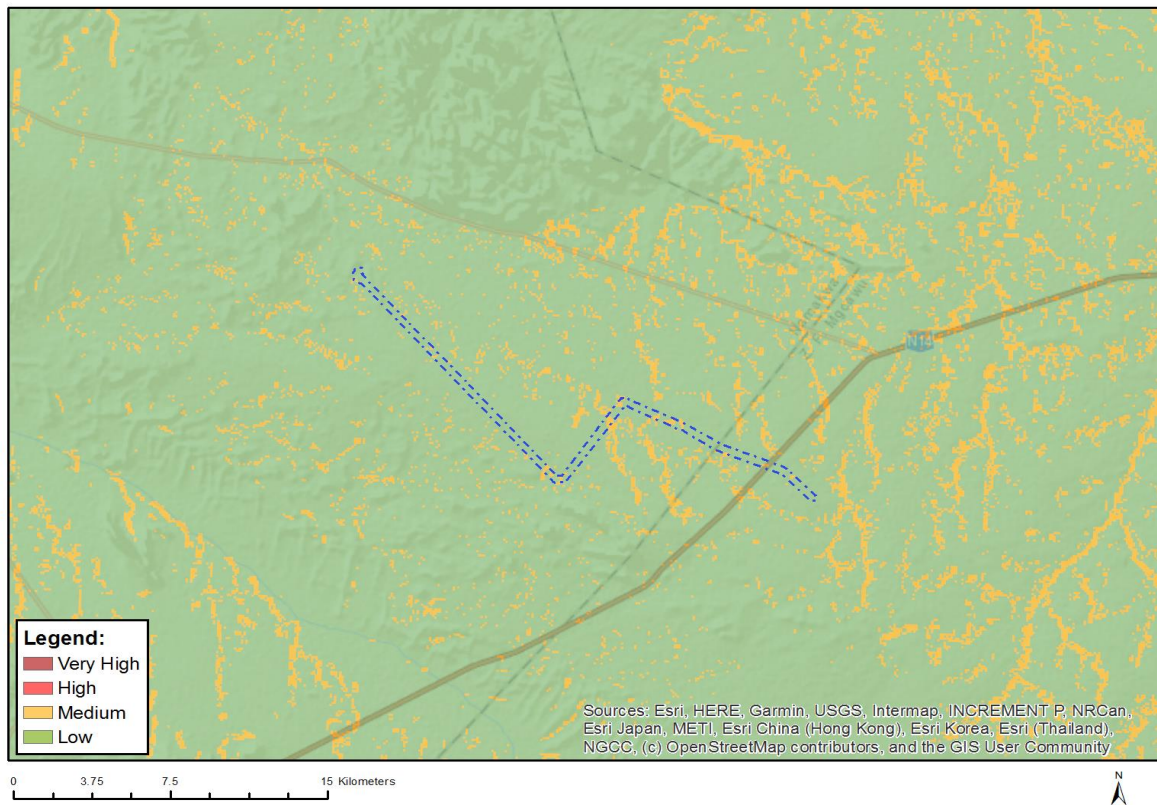
N o	Special ist assess ment	Assessment Protocol
1	Agricultural Impact Assessment	https://screening.environment.gov.za/ScreeningDownloads/AssessmentProtocols/Gazetted General Agriculture Assessment Protocols.pdf
2	Landscape/Visual Impact Assessment	https://screening.environment.gov.za/ScreeningDownloads/AssessmentProtocols/Gazetted General Requirement Assessment Protocols.pdf
3	Archaeological and Cultural Heritage Impact Assessment	https://screening.environment.gov.za/ScreeningDownloads/AssessmentProtocols/Gazetted General Requirement Assessment Protocols.pdf
4	Palaeontology Impact Assessment	https://screening.environment.gov.za/ScreeningDownloads/AssessmentProtocols/Gazetted General Requirement Assessment Protocols.pdf
5	Terrestrial Biodiversity Impact Assessment	https://screening.environment.gov.za/ScreeningDownloads/AssessmentProtocols/Gazetted Terrestrial Biodiversity Assessment Protocols.pdf
6	Aquatic Biodiversity Impact Assessment	https://screening.environment.gov.za/ScreeningDownloads/AssessmentProtocols/Gazetted Aquatic Biodiversity Assessment Protocols.pdf

	ent	
7	Avian Impact Assessment	https://screening.environment.gov.za/ScreeningDownloads/AssessmentProtocols/Gazetted_Avifauna_Assessment_Protocols.pdf
8	Civil Aviation Assessment	https://screening.environment.gov.za/ScreeningDownloads/AssessmentProtocols/Gazetted_Civil_Aviation_Installations_Assessment_Protocols.pdf
9	RFI Assessment	https://screening.environment.gov.za/ScreeningDownloads/AssessmentProtocols/Gazetted_General_Requirement_Assessment_Protocols.pdf
10	Geotechnical Assessment	https://screening.environment.gov.za/ScreeningDownloads/AssessmentProtocols/Gazetted_General_Requirement_Assessment_Protocols.pdf
11	Plant Species Assessment	https://screening.environment.gov.za/ScreeningDownloads/AssessmentProtocols/Gazetted_Plant_Species_Assessment_Protocols.pdf
12	Animal Species Assessment	https://screening.environment.gov.za/ScreeningDownloads/AssessmentProtocols/Gazetted_Animal_Species_Assessment_Protocols.pdf

Results of the environmental sensitivity of the proposed area.

The following section represents the results of the screening for environmental sensitivity of the proposed site for relevant environmental themes associated with the project classification. It is the duty of the EAP to ensure that the environmental themes provided by the screening tool are comprehensive and complete for the project. Refer to the disclaimer.

MAP OF RELATIVE AGRICULTURE THEME SENSITIVITY

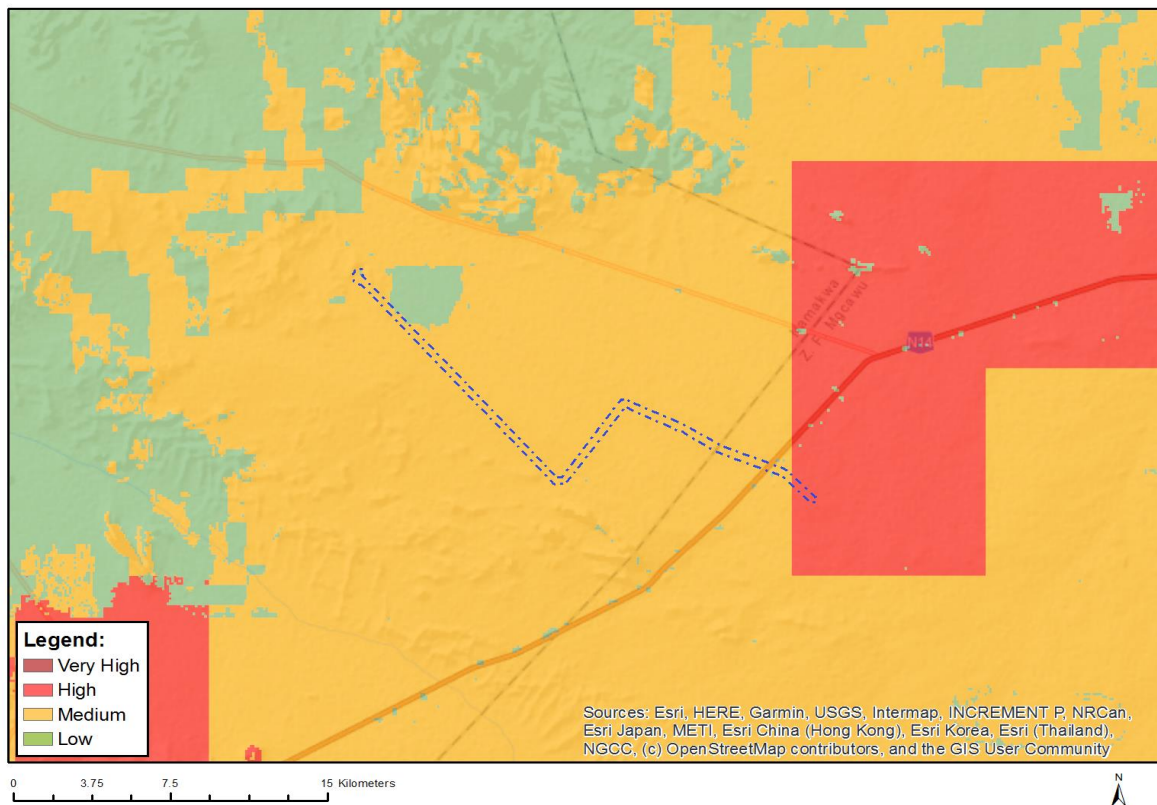


Very High sensitivity	High sensitivity	Medium sensitivity	Low sensitivity
		X	

Sensitivity Features:

Sensitivity	Feature(s)
Low	Land capability;01. Very low/02. Very low/03. Low-Very low/04. Low-Very low/05. Low
Medium	Land capability;06. Low-Moderate/07. Low-Moderate/08. Moderate

MAP OF RELATIVE ANIMAL SPECIES THEME SENSITIVITY



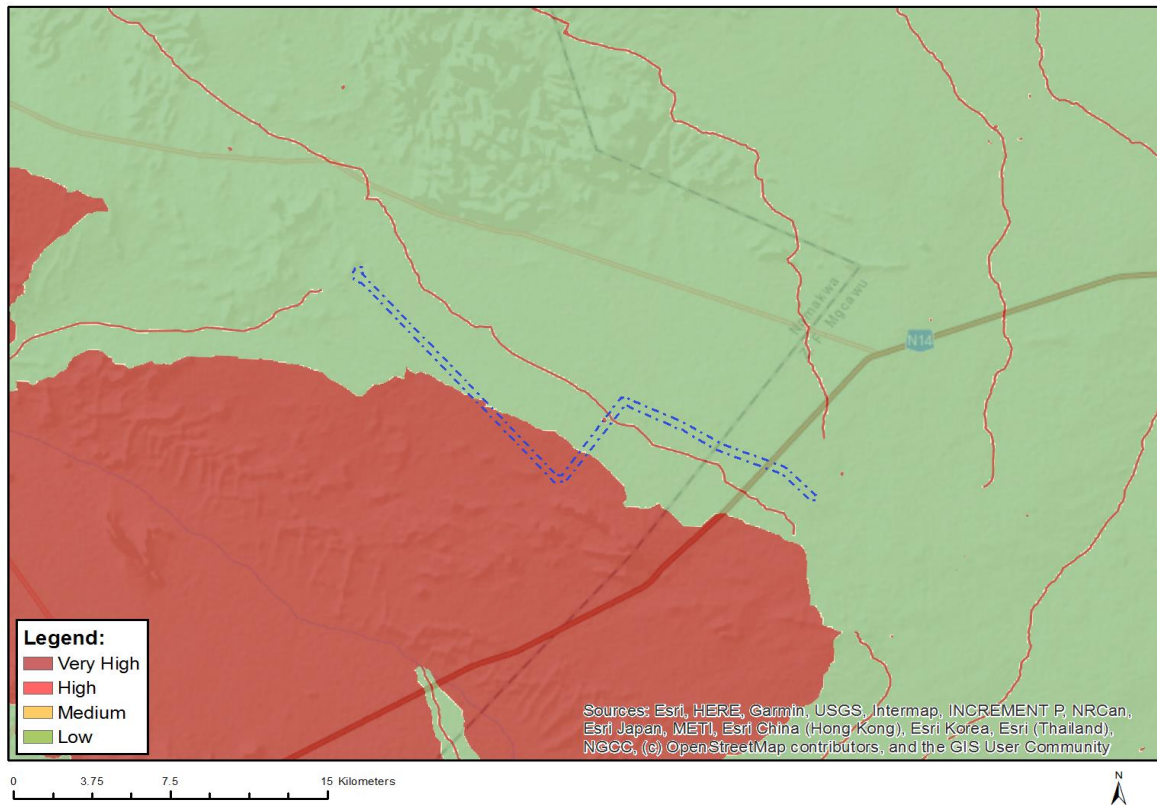
Where only a sensitive plant unique number or sensitive animal unique number is provided in the screening report and an assessment is required, the environmental assessment practitioner (EAP) or specialist is required to email SANBI at eiadatarequests@sanbi.org.za listing all sensitive species with their unique identifiers for which information is required. The name has been withheld as the species may be prone to illegal harvesting and must be protected. SANBI will release the actual species name after the details of the EAP or specialist have been documented.

Very High sensitivity	High sensitivity	Medium sensitivity	Low sensitivity
	X		

Sensitivity Features:

Sensitivity	Feature(s)
High	Aves-Neotis ludwigii
Low	Low sensitivity
Medium	Aves-Neotis ludwigii

MAP OF RELATIVE AQUATIC BIODIVERSITY THEME SENSITIVITY

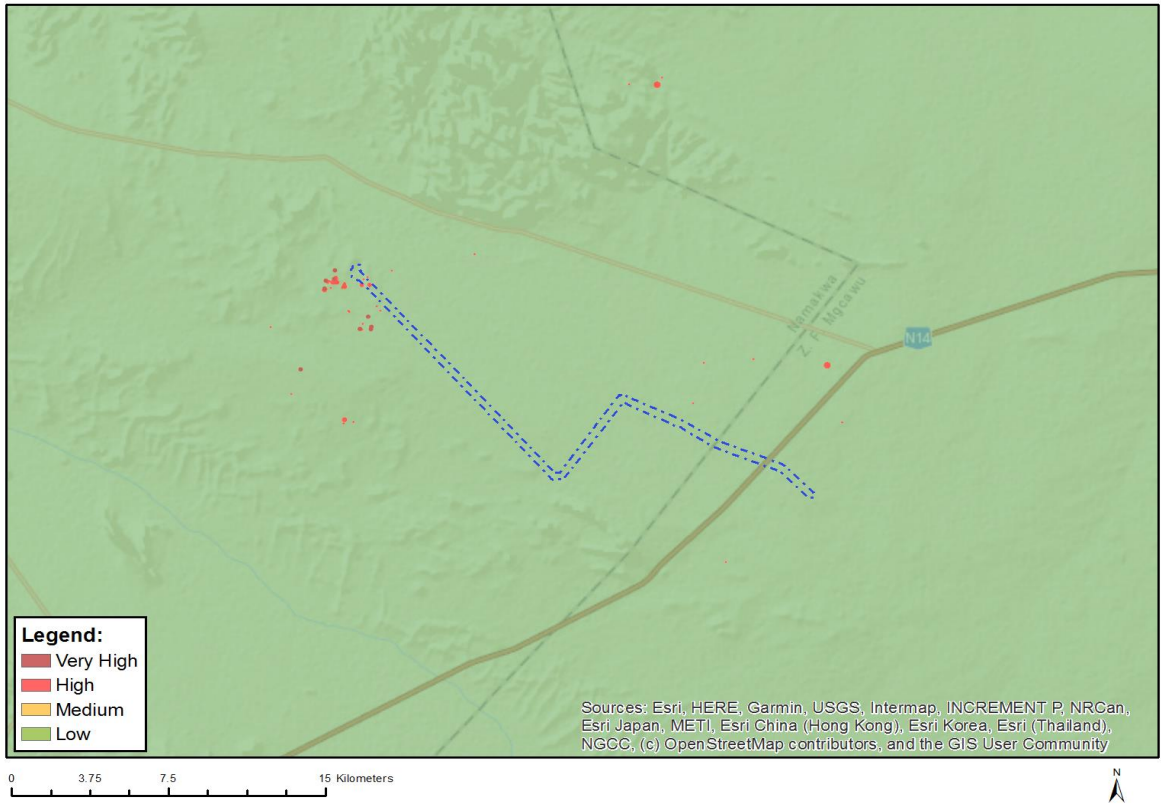


Very High sensitivity	High sensitivity	Medium sensitivity	Low sensitivity
X			

Sensitivity Features:

Sensitivity	Feature(s)
Low	Low sensitivity
Very High	Rivers
Very High	Wetlands and Estuaries
Very High	Freshwater ecosystem priority area quinary catchments

MAP OF RELATIVE ARCHAEOLOGICAL AND CULTURAL HERITAGE THEME SENSITIVITY

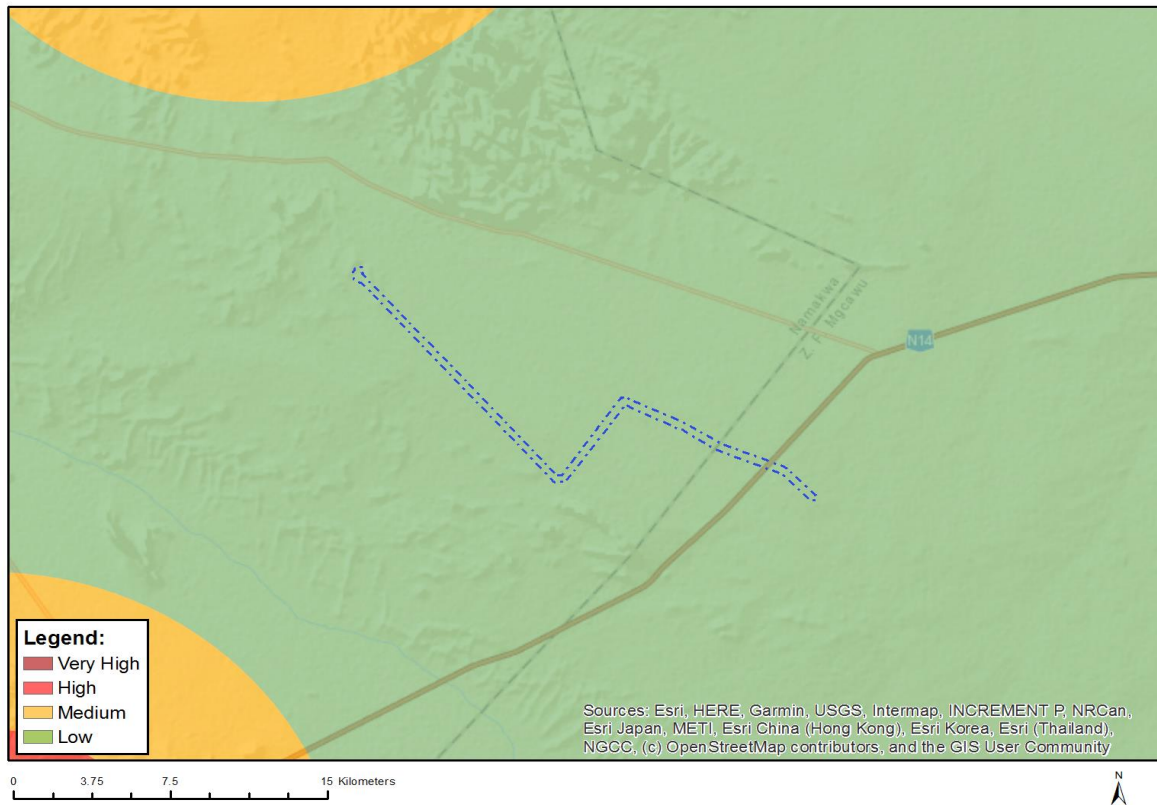


Very High sensitivity	High sensitivity	Medium sensitivity	Low sensitivity
	X		

Sensitivity Features:

Sensitivity	Feature(s)
High	Within 100m of a Grade IIIb Heritage site
High	Within 50m of a Grade IIIc Heritage site
Low	Low sensitivity

MAP OF RELATIVE CIVIL AVIATION THEME SENSITIVITY

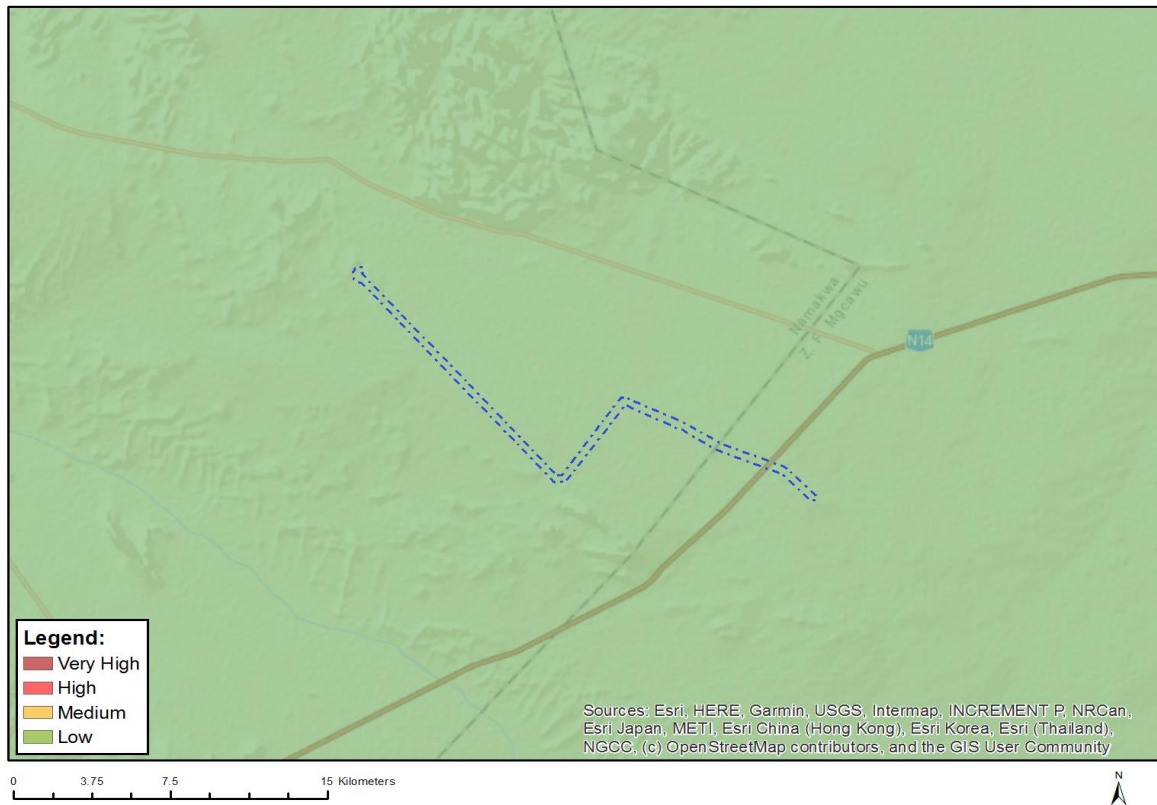


Very High sensitivity	High sensitivity	Medium sensitivity	Low sensitivity
			X

Sensitivity Features:

Sensitivity	Feature(s)
Low	Low sensitivity

MAP OF RELATIVE DEFENCE THEME SENSITIVITY

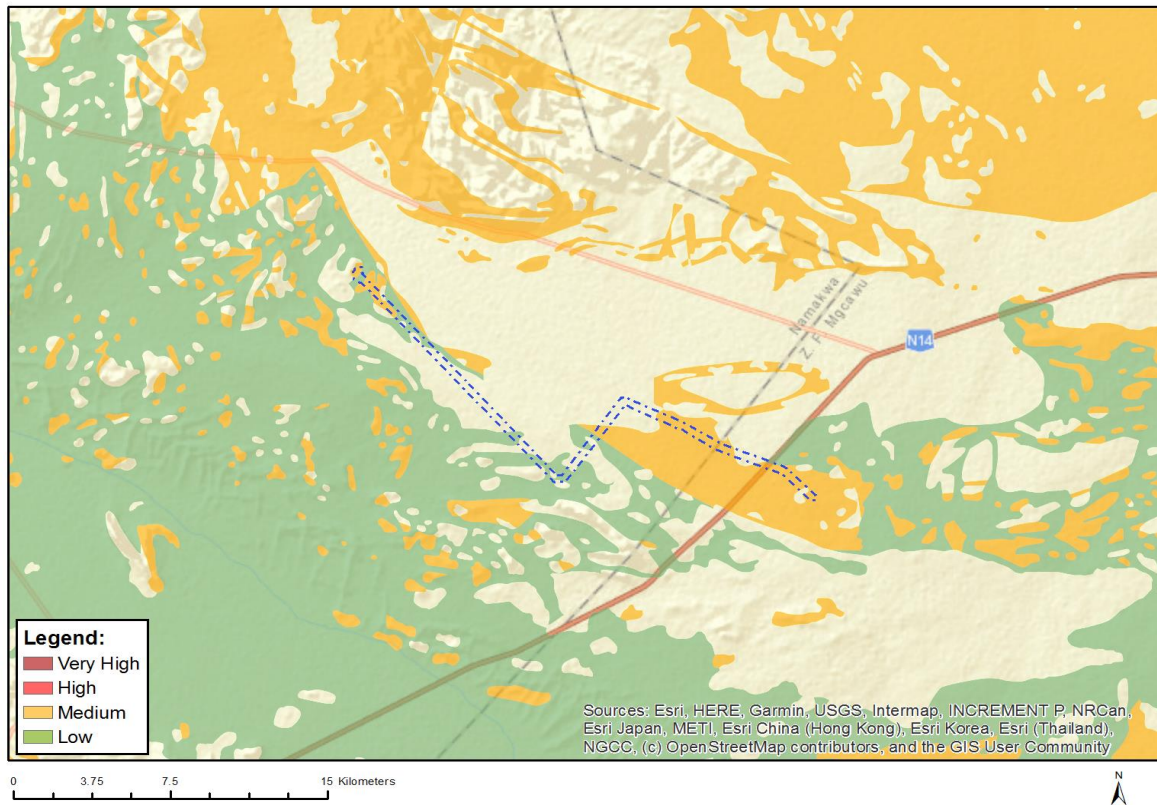


Very High sensitivity	High sensitivity	Medium sensitivity	Low sensitivity
			X

Sensitivity Features:

Sensitivity	Feature(s)
Low	Low Sensitivity

MAP OF RELATIVE PALEONTOLOGY THEME SENSITIVITY

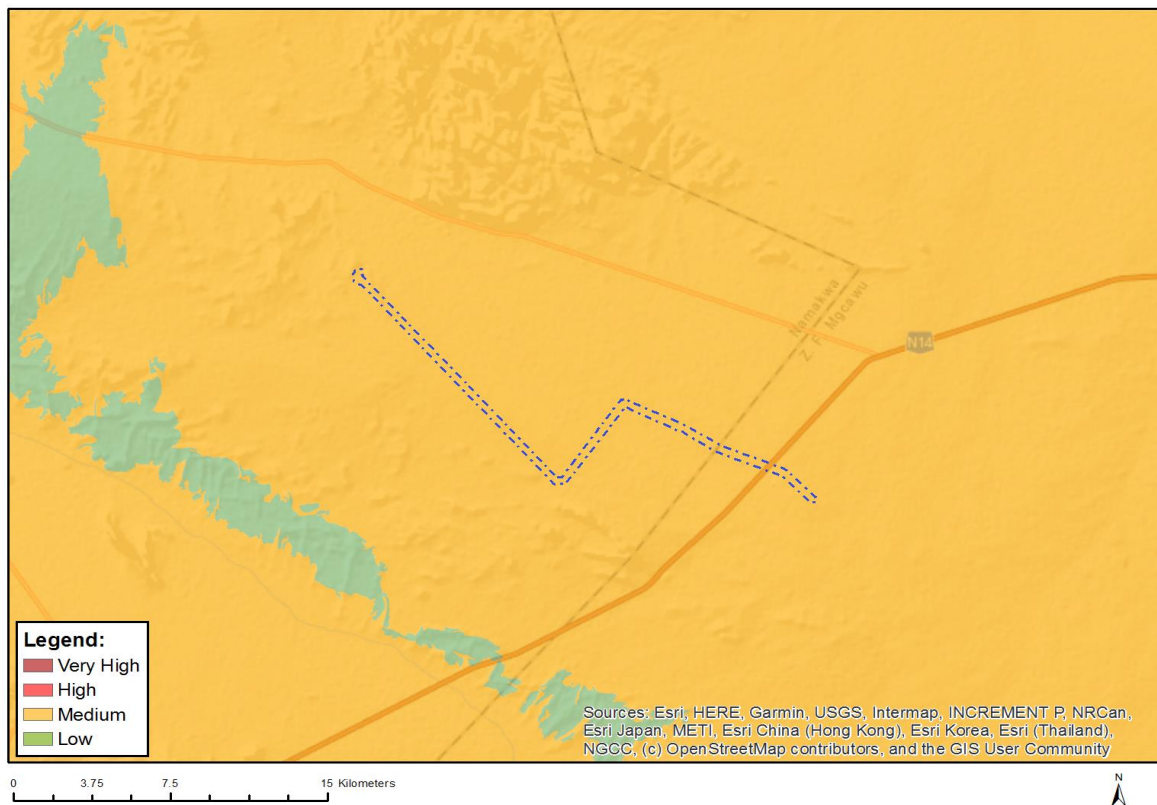


Very High sensitivity	High sensitivity	Medium sensitivity	Low sensitivity
		X	

Sensitivity Features:

Sensitivity	Feature(s)
Low	Features with a Low paleontological sensitivity
Medium	Features with a Medium paleontological sensitivity

MAP OF RELATIVE PLANT SPECIES THEME SENSITIVITY



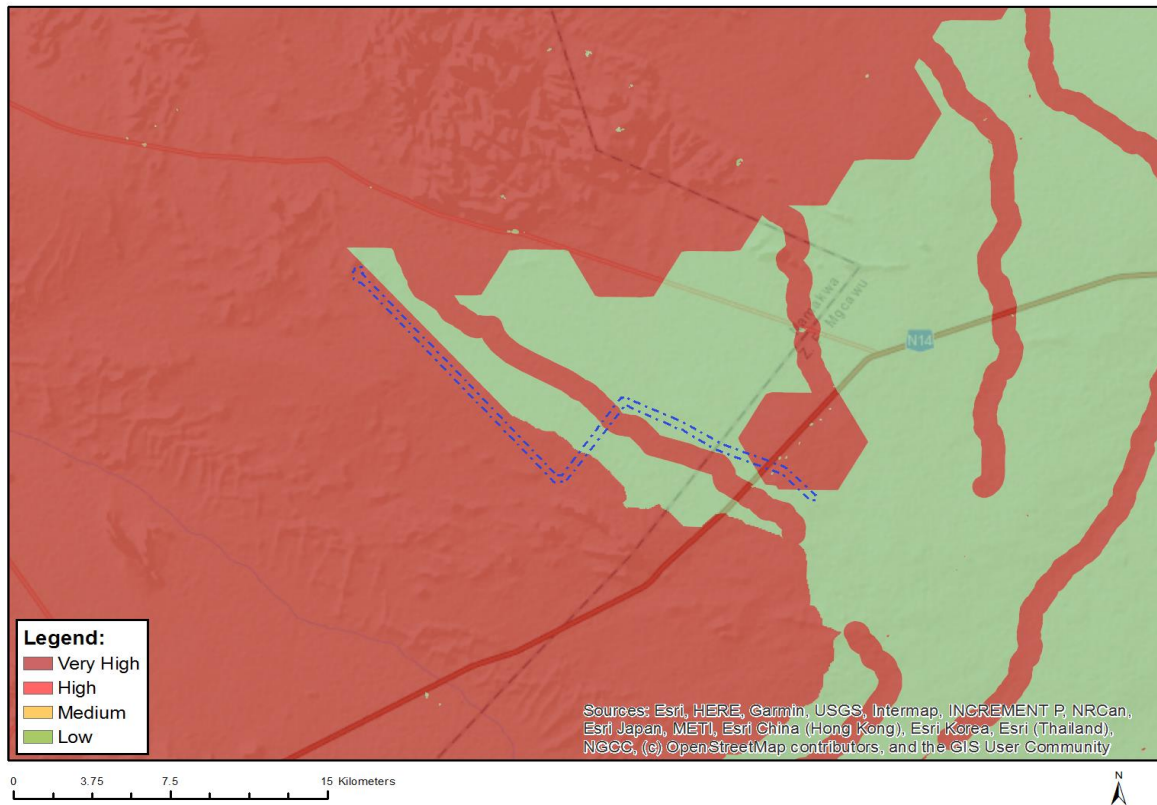
Where only a sensitive plant unique number or sensitive animal unique number is provided in the screening report and an assessment is required, the environmental assessment practitioner (EAP) or specialist is required to email SANBI at eiadatarequests@sanbi.org.za listing all sensitive species with their unique identifiers for which information is required. The name has been withheld as the species may be prone to illegal harvesting and must be protected. SANBI will release the actual species name after the details of the EAP or specialist have been documented.

Very High sensitivity	High sensitivity	Medium sensitivity	Low sensitivity
		X	

Sensitivity Features:

Sensitivity	Feature(s)
Low	Low Sensitivity
Medium	<i>Crotalaria pearsonii</i>
Medium	Sensitive species 144

MAP OF RELATIVE TERRESTRIAL BIODIVERSITY THEME SENSITIVITY



Very High sensitivity	High sensitivity	Medium sensitivity	Low sensitivity
X			

Sensitivity Features:

Sensitivity	Feature(s)
Low	Low Sensitivity
Very High	Critical Biodiversity Area 1
Very High	Critical Biodiversity Area 2
Very High	Ecological Support Area
Very High	Freshwater ecosystem priority area quinary catchments