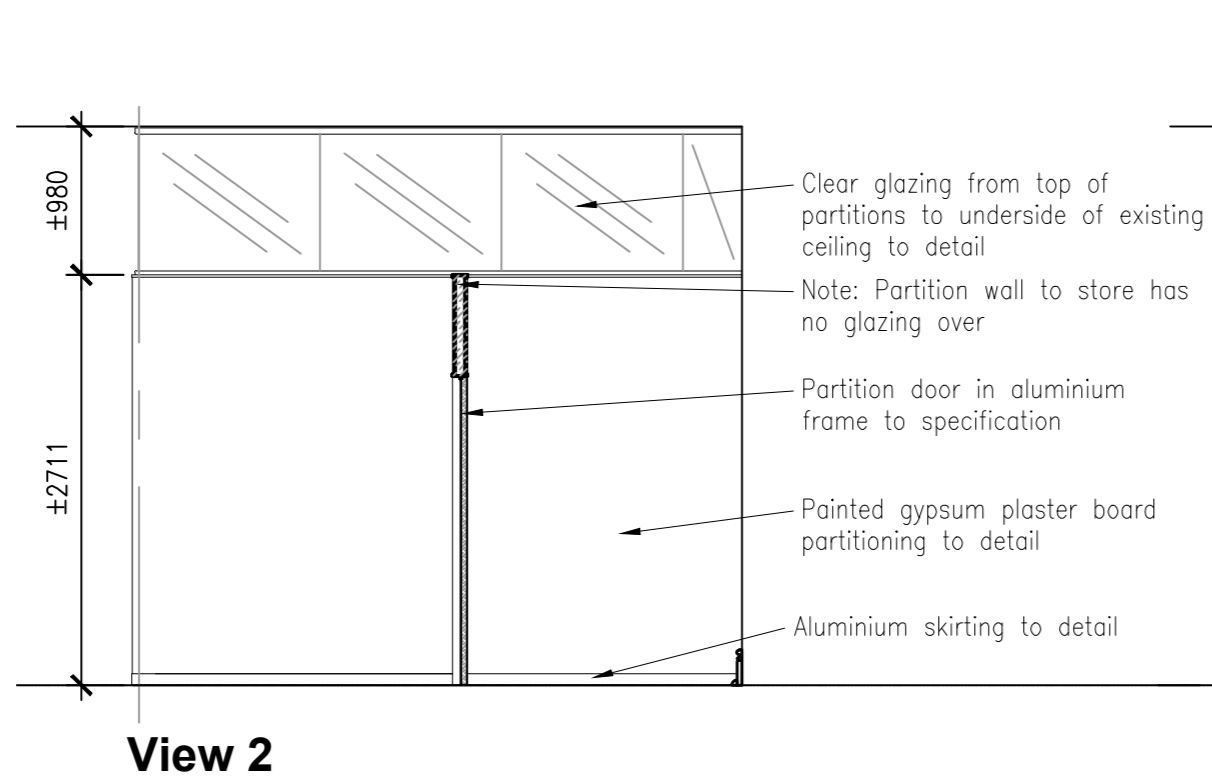
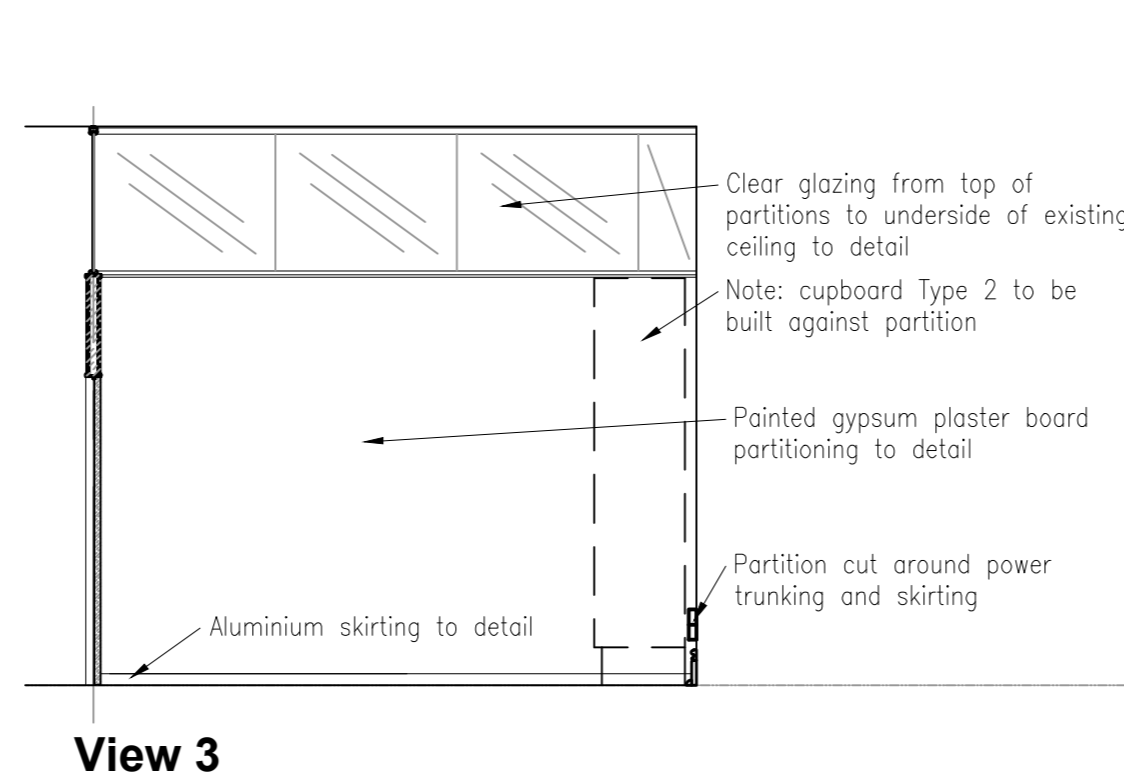


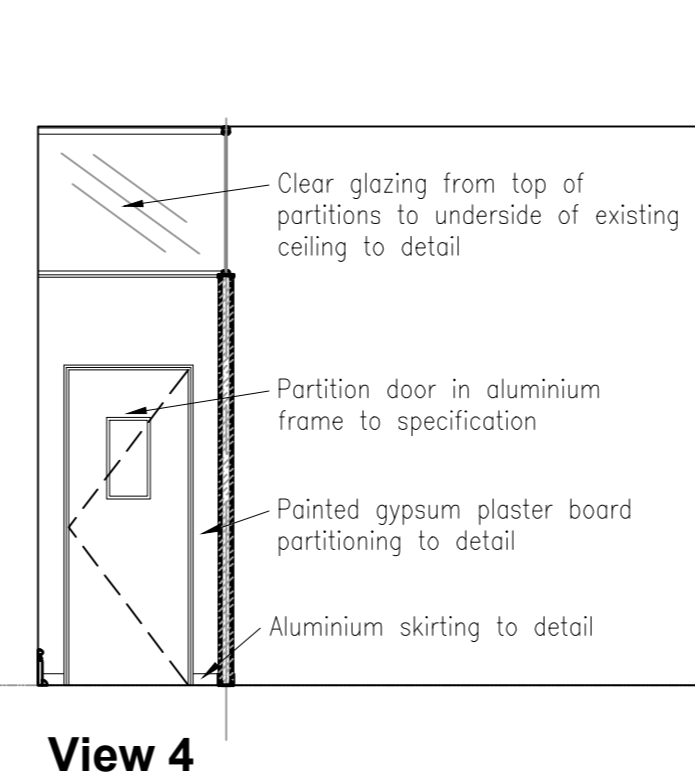
View 1



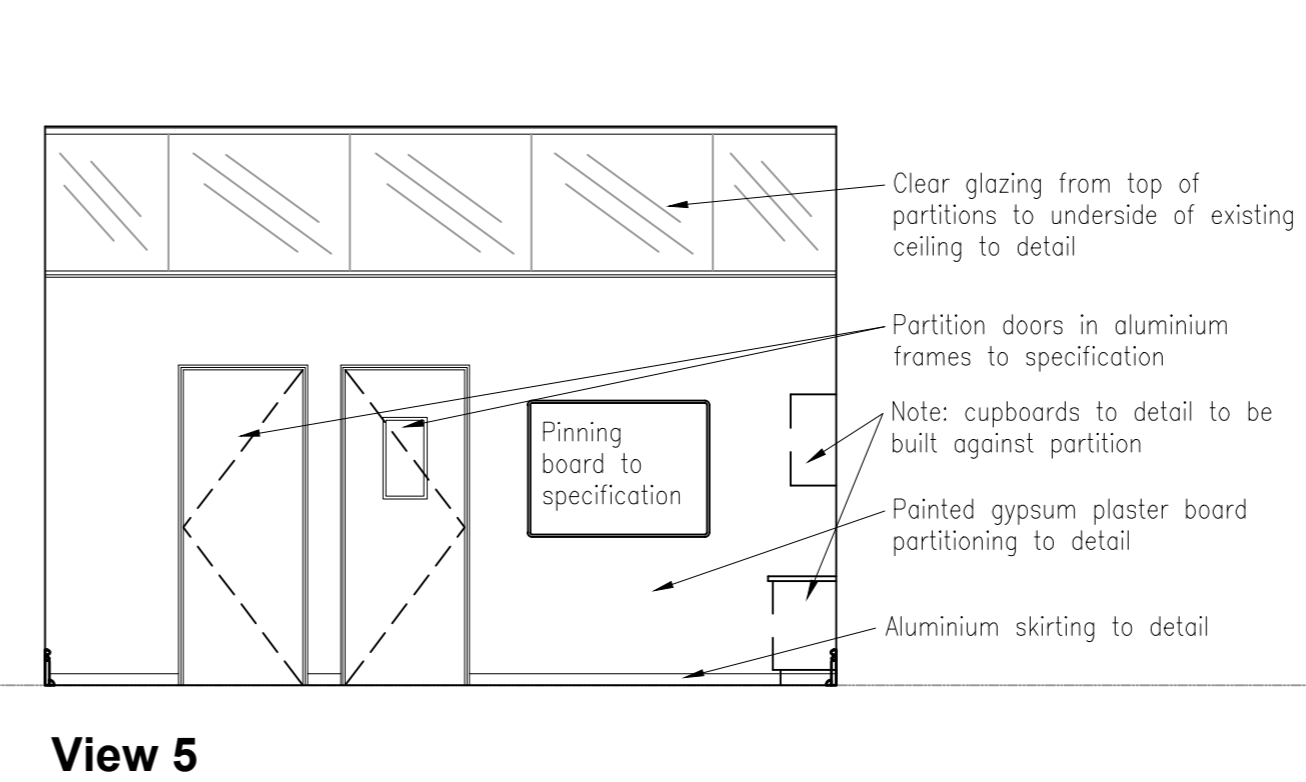
View 2



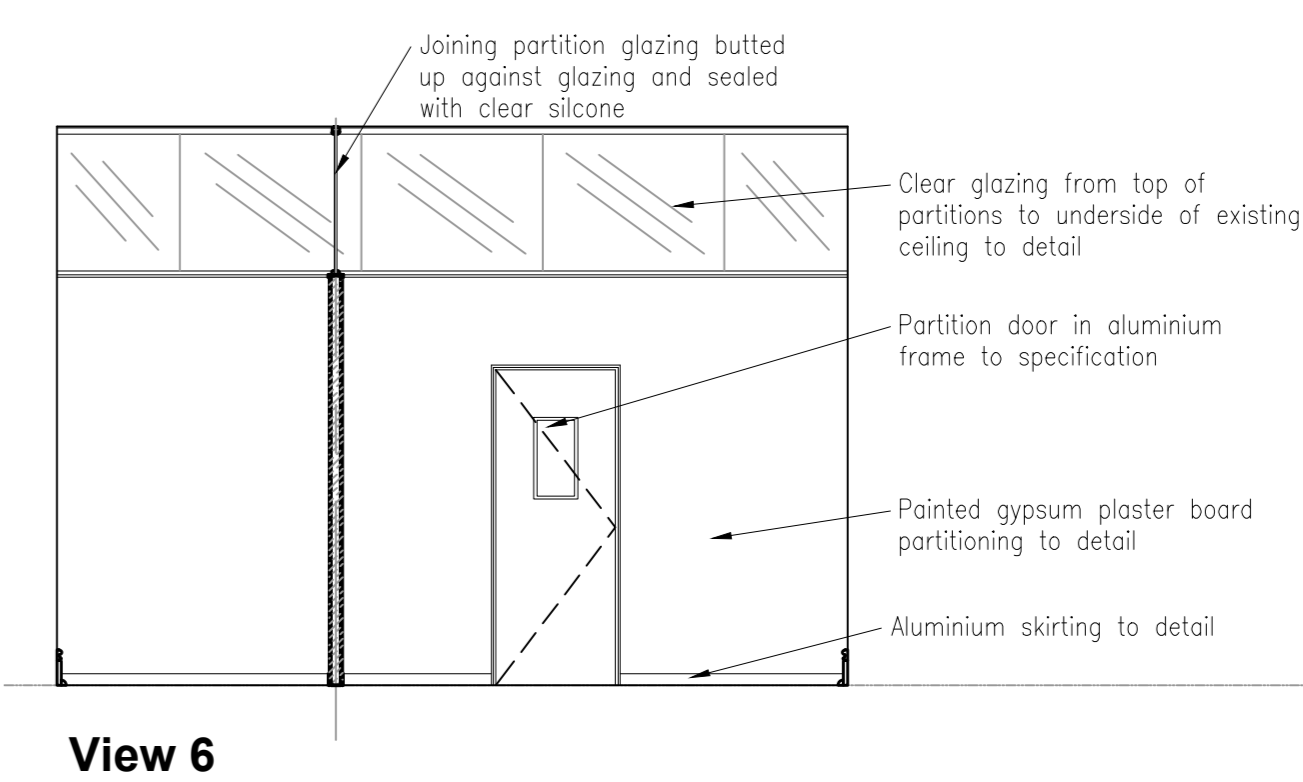
View 3



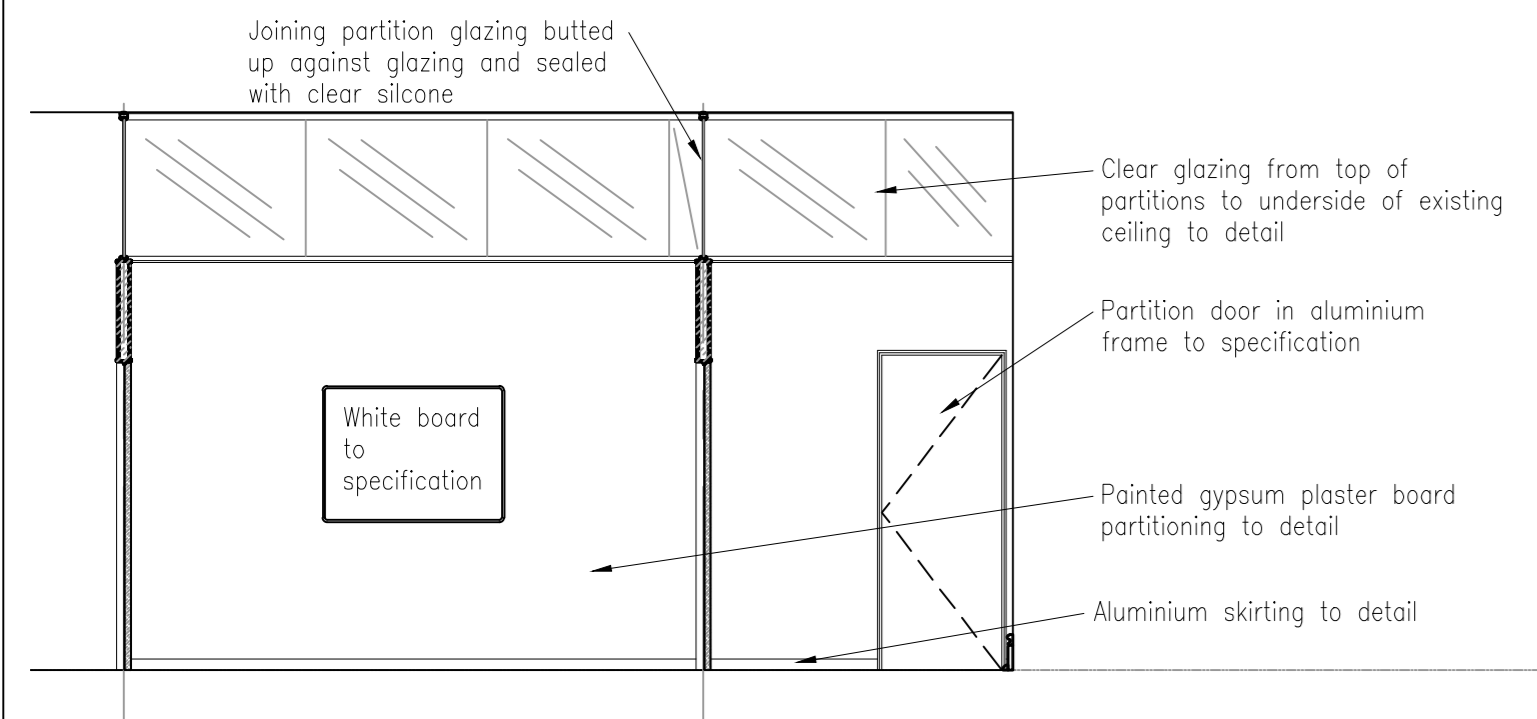
View 4



View 5



View 6



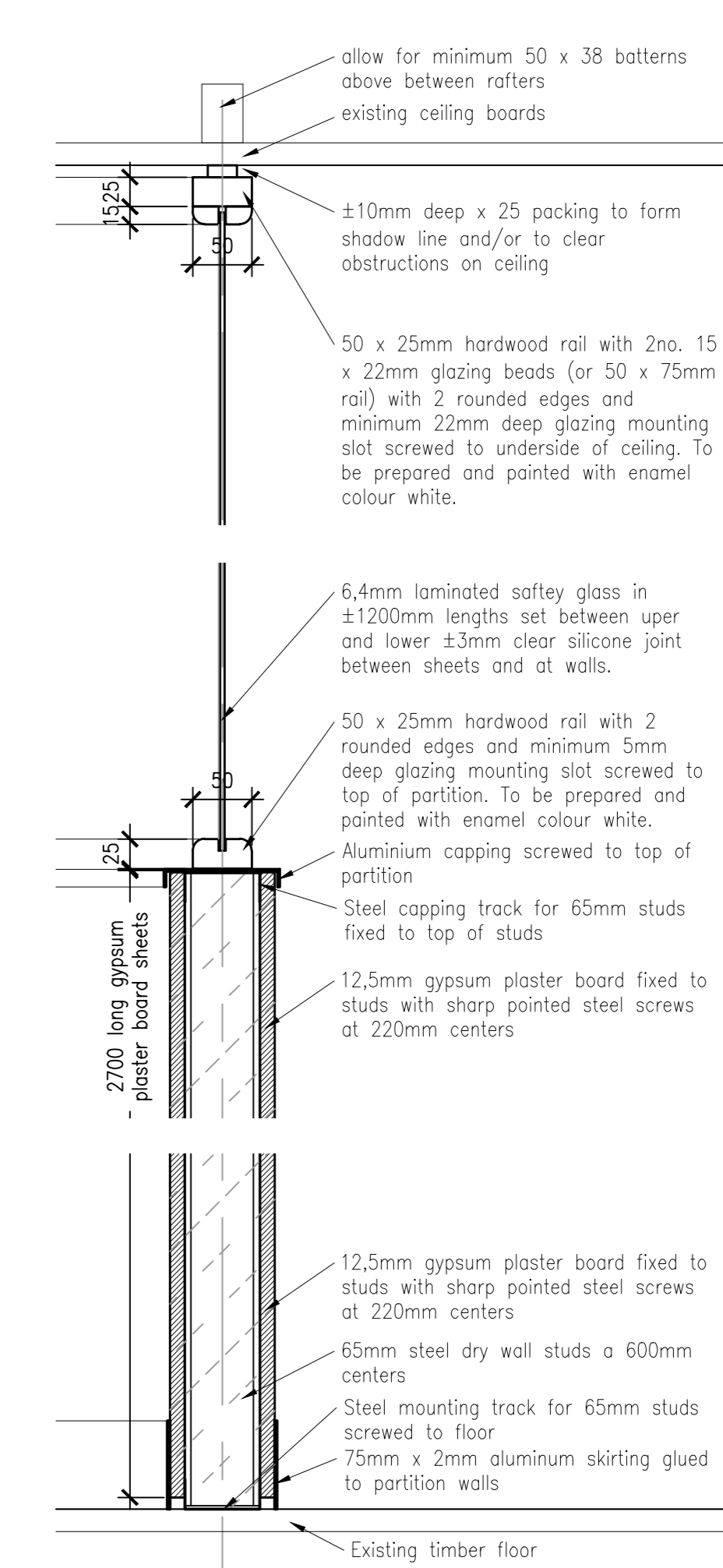
View 7

Views of Partition Walls scale 1:50

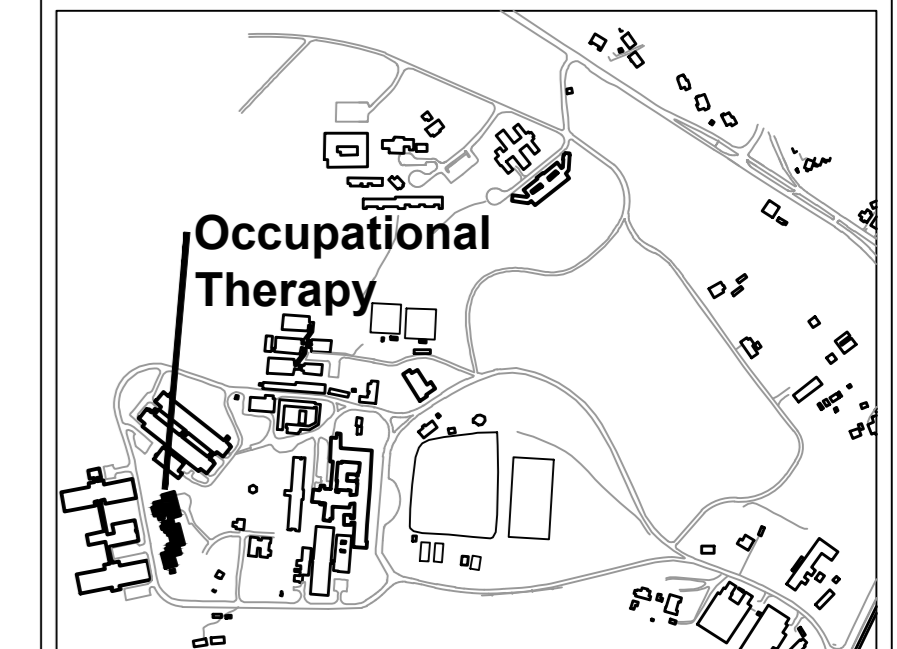
Notes:

1. New hardwood skirting to be installed all round room prior to any other work. New partitions to be neatly cut round this skirting.
2. Partitions to be constructed from 2700 x 1200 x 12.5mm gypsum plaster board on 65mm wide steel studs at 600mm centres with all necessary cross studs all in accordance with manufacturers recommendations. All joints are to be taped. Where there are right angle corners PVC edge strip to be fixed to wall. All joints and fixings to be skimmed and walls to be prepared, undercoated and painted with PVA in accordance with paint manufacturers recommendations to obtain a smooth and uniform finish.
3. Top glazing to be 6.5mm laminated safety glass in sections of approximately 1200mm wide. Sections to be butt jointed with ±3mm clear silicone. Minimum 5mm free space at be left between top of glass and top of mounting slot for possible deflections in ceiling.
4. Glazing to windows to be 6.5mm laminated obscure glazing or minimum 4mm toughened obscure glazing in neoprene seals in aluminium frame.

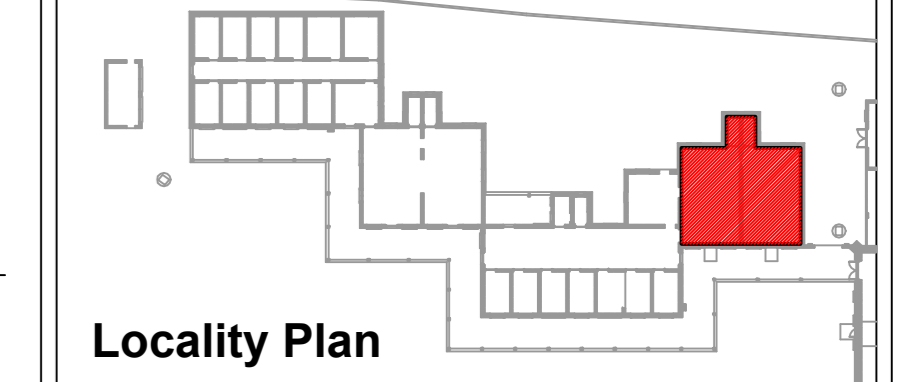
Doors DP1, DP2, DP3, DP6 and DP8		Doors DP4, DP5 and DP7	
Frame	98 x 20 aluminium partition wall opening surround section with rebate edge	Frame	98 x 20 aluminium partition wall opening surround section with rebate edge
Door	2032 high x 813 wide x 40mm medium duty class 4 (dry areas) door with hard board cladding and concealed edges suitable for painting.	Door	2032 high x 813 wide x 40mm medium duty class 4 (dry areas) door with hard board cladding and concealed edges suitable for painting.
Finishing Panel	200 x 300 viewing panel cut in door and fixed all round with aluminium edge with minimum 20mm return. Glazing to be 6.5mm clear laminated safety glass	Finishing Panel	200 x 300 viewing panel cut in door and fixed all round with aluminium edge with minimum 20mm return. Glazing to be 6.5mm clear laminated safety glass
Hinges	1 pair 100 x 80mm aluminium butt hinges riveted to frame and screwed to door	Hinges	1 pair 100 x 80mm aluminium butt hinges riveted to frame and screwed to door
Hardware	Fit pair of 60mm brass ball door handles as per Union Weaver on Rose ref C85240 or other approved. Fit pair of brass circular concealed fixing escutcheon plates as per Union P8584-13 or other approved. Fit new steel knob cylinder upright door lock and keep with brass finish as per Union L241-795-2x13PL or other approved.	Hardware	Fit pair of 60mm brass ball door handles as per Union Weaver on Rose ref C85240 or other approved. Fit pair of brass circular concealed fixing escutcheon plates as per Union P8584-13 or other approved. Fit new steel knob cylinder upright door lock and keep with brass finish as per Union L241-795-2x13PL or other approved.
Finish	Fill any holes around edges with an approved filler. Sand edges smooth. Prepare door surfaces for primer and enamel paint applied in accordance with manufacturers recommendations to and even and consistent finish.	Finish	Fill any holes around edges with an approved filler. Sand edges smooth. Prepare door surfaces for primer and enamel paint applied in accordance with manufacturers recommendations to and even and consistent finish.
Notes		Notes	



Typical Partition Wall scale 1:5



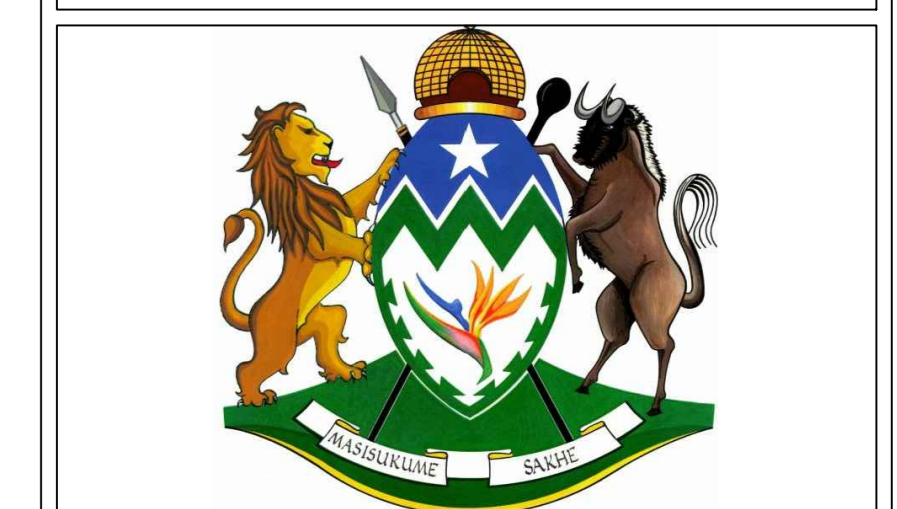
Locality Plan Site



Locality Plan

NO.	DATE	AMENDMENTS AND REVISIONS
⊕		AMENDMENTS BEFORE CONTRACT COMMENCES
⊖		REVISIONS AFTER CONTRACT HAS COMMENCED

**PROVINCE OF KWA-ZULU NATAL
DEPARTMENT OF WORKS
PRIVATE BAG X9041
PIETERMARITZBURG
3200**

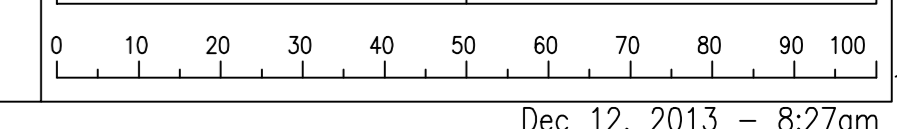


L&R architects
Suite E3 : Block E
Netcare Office Park
95 Umhlanga Rocks Drive
Durban North
4051
Tel : 031 573 1202
Fax: 031 573 1201
eMail: reesh@mweb.co.za

PROJECT
SOUTHERN REGION
PIETERMARITZBURG
DEPARTMENT OF HEALTH
TOWN HILL HOSPITAL
REPLACEMENT AND
RENOVATIONS TO ROOFS

DRAWING DESCRIPTION
OCCUPATIONAL THERAPY
BLOCK S1
ALTERATIONS AND RENOVATIONS

DRAWING NO. 044038 - E - 207	REV .
SCALE 1:50 1:25	CHECKED .
FILE NO. WIMS 044038	CLIENT .
DATE Sep 2013	DRAWN J.K.W.



Z:\Projects\L&R_Architects\038_Townhill_Hospital\Drawings\OCCUPATIONAL_THERAPY\Drawings\038-E-207-Block_S1.dwg